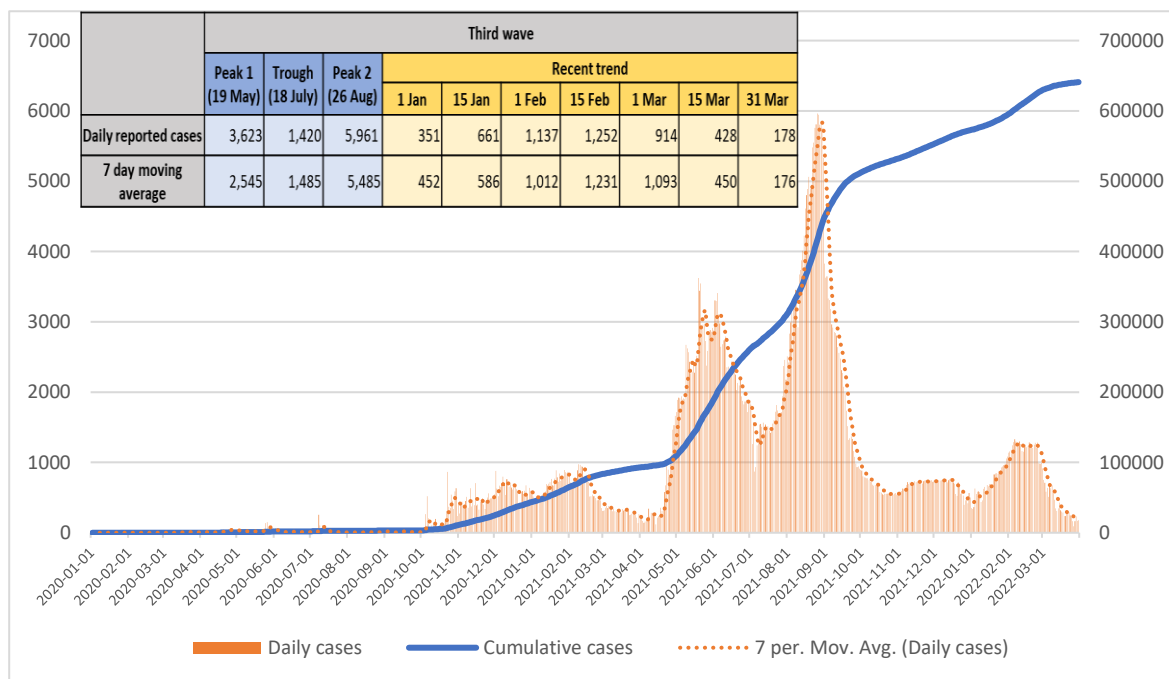




COVID -19 Situation Report

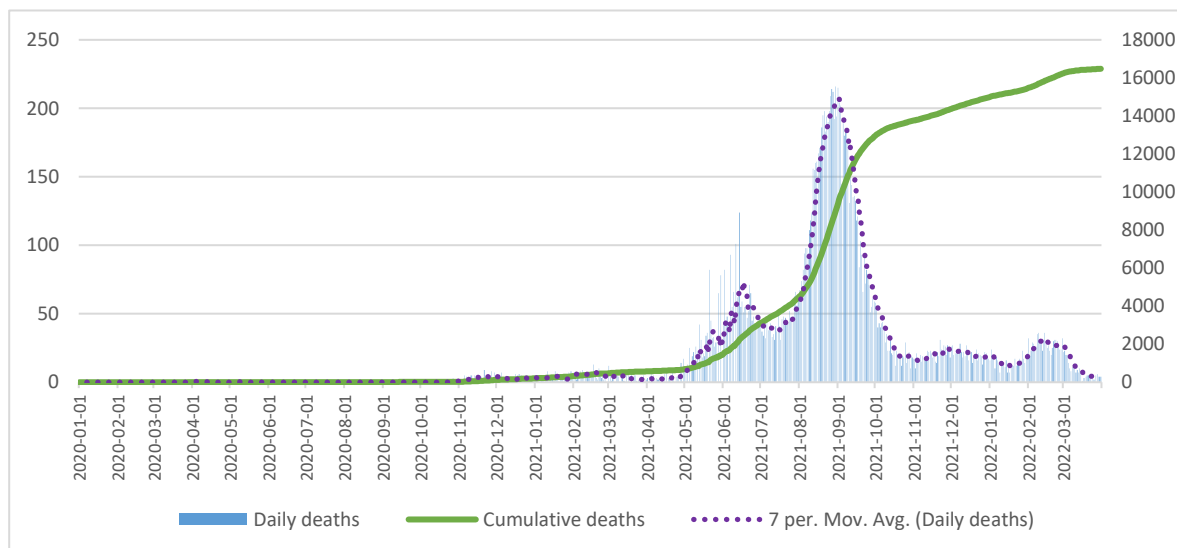
1. Daily cases and cumulative cases



Source: Ministry of Health -Daily reported cases. Data updated until 31 March 2022

- A total of 661,631 cases have been reported as of 31 March
- The number of daily cases reported over the past 14 days (18 Mar- 31 Mar) is 3,111 which is a 54% decrease compared to the previous 14-day period (4 - 17 Mar).
- The average weekly incidence over the past 14 days is 7.1 per 100,000 population

2. Daily deaths and cumulative deaths

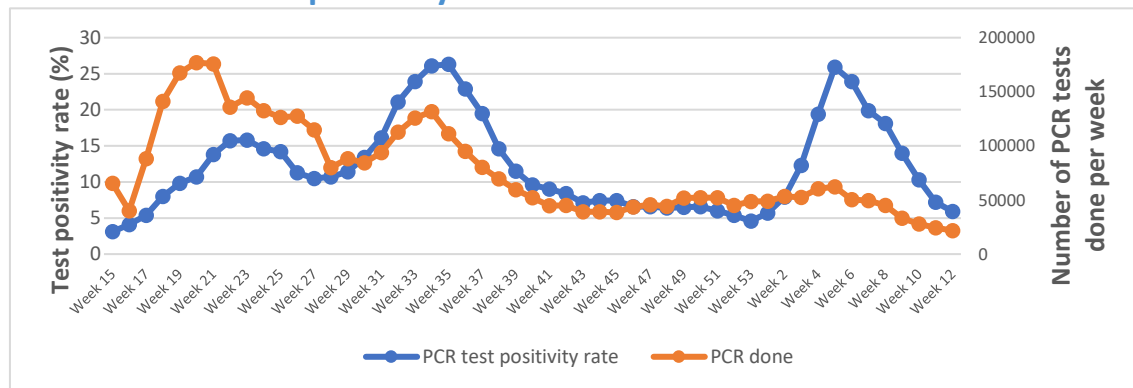


Source: Ministry of Health. Data updated until 31 March 2022

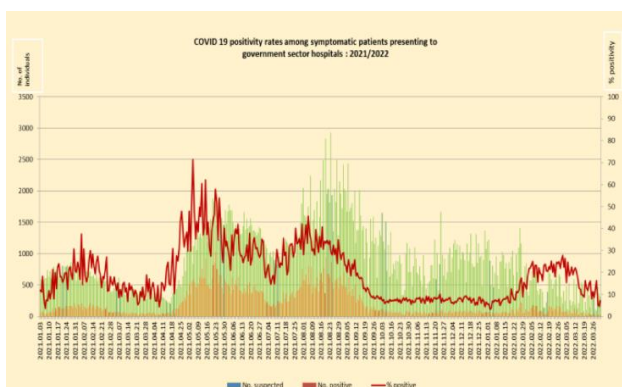
- A total of 16,477 deaths have been reported as of 31 March with 56% males. 76% of the deaths are in age group of 60+, while 22% is in the 30-60 years age group.
- The number of daily deaths reported over the past 14 days (18 Mar- 31 Mar) is 58 which is a 56% decrease compared to the previous 14-day period (4 - 17 Mar).
- The average weekly case fatality rate over the past 14 days is 0.13 per 100,000 population



3. Test positivity rate



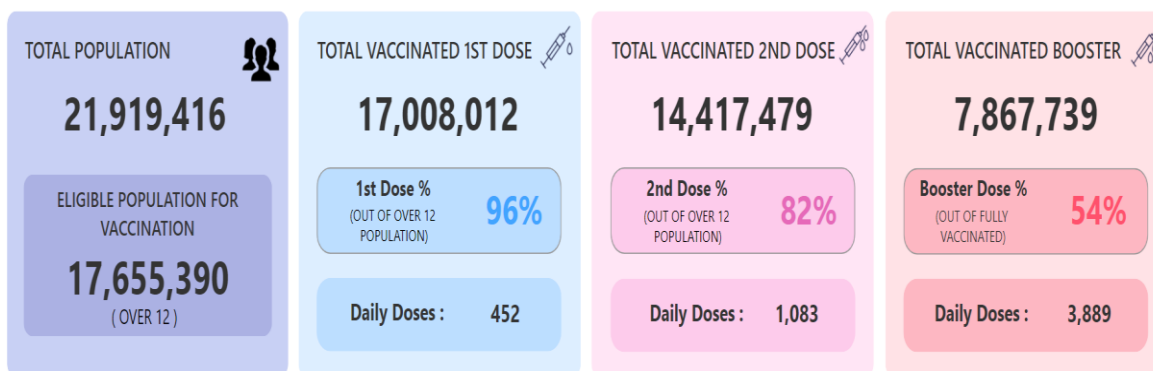
Source: Weekly PCR test positivity rate - National COVID-19 Surveillance System of Sri Lanka. Data updated until 27 March 2022



Source: Epidemiology Unit, accessed on 31 March 2022

- Weekly PCR test positivity rate has decreased since week 5 of 2022 and is currently 5.9%. Around 21,700 PCR tests were conducted during the week (105 PCR tests per 100,000 population per week). Further, Rapid Antigen Tests are also widely used for testing.
- Test positivity rate among patients who are having symptoms presenting to government hospitals tested using RAT and PCR is also showing a declining trend.

4. Vaccination



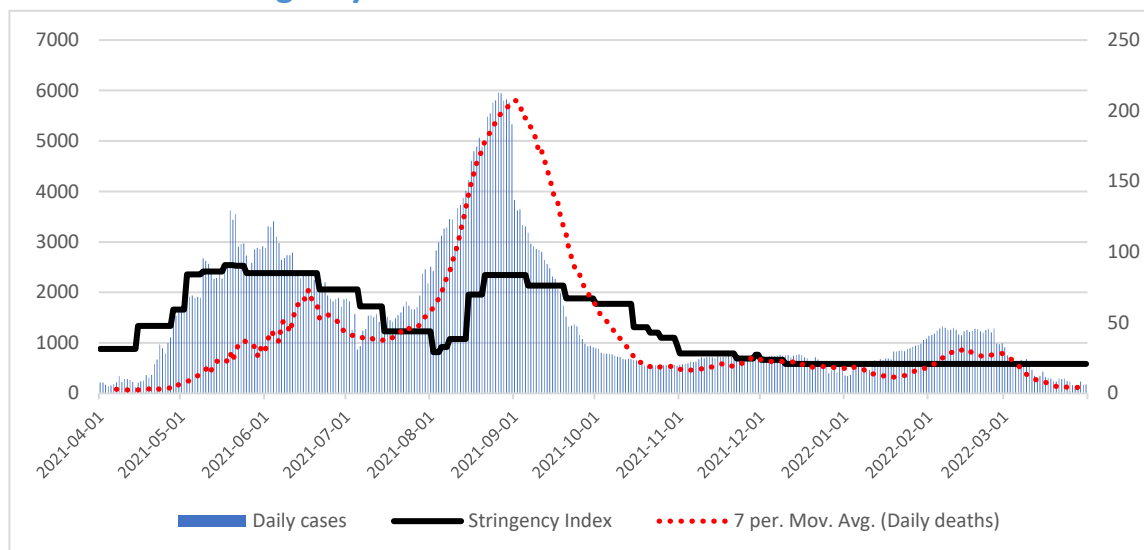
Total Population 21,919,413	Astra Zeneca - 1st Dose 1,479,631	Sinopharm - 1st Dose 12,048,053	Sputnik V - 1st Dose 159,110	Pfizer - 1st Dose 2,516,417	Moderna - 1st Dose 804,801	Total Vaccination - 1st Dose 17,008,012
Over 12 Population 17,655,390	Astra Zeneca - 2nd Dose 1,418,593	Sinopharm - 2nd Dose 11,174,310	Sputnik V - 2nd Dose 155,812	Pfizer - 2nd Dose 881,403	Moderna - 2nd Dose 787,361	Total Vaccination - 2nd Dose 14,417,479

Source: <https://www.presidentsoffice.gov.lk/index.php/vaccination-dashboard/>. Accessed on 31 March 2022

- The accelerated vaccination effort has now covered 82% of the over 12 years age group with two doses and this corresponds to 65.8% of the total population
- A third dose (with Pfizer vaccine) has been administered to 7.86 million persons (35.9% of the total population and 54% of fully vaccinated). The number of third doses administered over the past 14 days (18 Mar – 31 Mar) is 214,730.



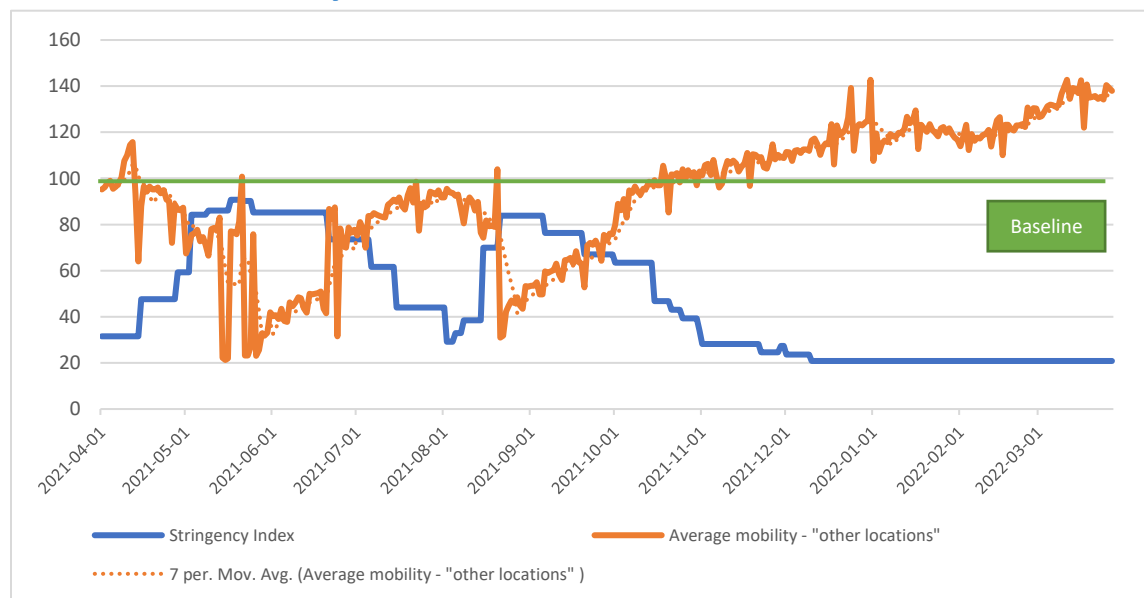
5. Stringency index



Source: Oxford Stringency Index (SI) values are considered. Data until 21 June accessed from Oxford COVID Government Response Tracker; same methodology used for calculations of SI from 21 June onwards. Data updated until 31 March 2022.

- The level of stringency continues to be low with most sectors are functioning at full capacity

6. Mobility



Source: Google Community Mobility data are considered. Data available until 27 March 2022

- The average mobility has been **above the baseline*** since mid-November 2021 and is currently at 138% (27 March).

*A baseline day represents a normal value for that day of the week calculated based on the median value from the 5-week period Jan 3 – Feb 6, 2020.



7. Regional situation *(Updated as of 23 March 2022)*

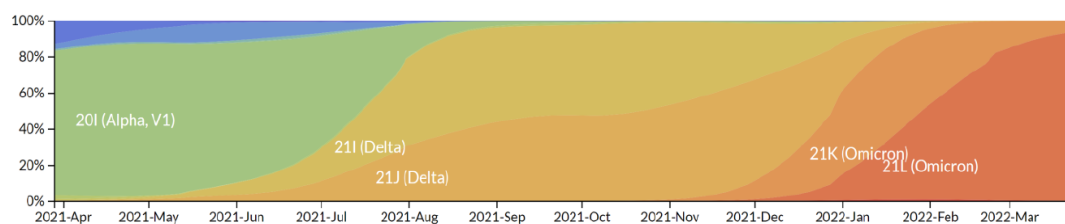
Country	Case trend	New cases	New cases per 100 000 pop	% change in new cases*	Death trend	New deaths	New deaths per 100 000 pop	% change in new deaths*	TPR % (7 DMA)	% Change in TPR*
Bangladesh		856	0.5	-48		6	0.0	-60	1.6	-29.9
Bhutan		3 039	393.9	-27		2	0.3	-	12.4	165.8
India		13 811	1.0	-40		533	0.0	-26	0.5	-15.9
Indonesia		53 472	19.5	-47		1 246	0.5	-32	9.2	-35.5
Maldives		NA	NA	NA		NA	NA	NA	NA	NA
Myanmar		2 516	4.6	-50		19	0.0	-42	3.5	-44.6
Nepal		180	0.6	-52		1	0.0	0	1.0	-28.6
Sri Lanka		3 017	14.1	8		29	0.1	-47	9.6	-33.6
Thailand		173 314	248.3	7		579	0.8	21	35.7	-27.3
Timor-Leste		12	0.9	-50		1	0.1	-	1.5	-44.4
SEAR total		250 217	12.4	-17		2 408	0.1	-23	-	-

Source: WHO SEARO

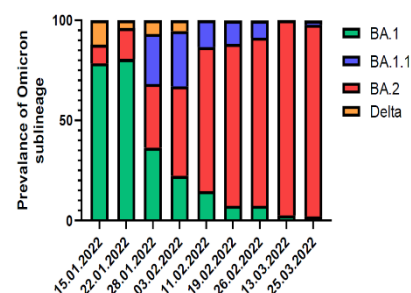
8. Omicron

48 samples were sequenced during the 2nd and 3rd week of March from the community in Colombo, and some other areas. Further, 32 more samples collected during January to March from Colombo, Avissawella and Kandy were sequenced. Omicron variant was detected in all the above samples. A total of 1075 Omicron cases have been sequenced to date.

Frequencies (colored by Clade)



Timeline of the emergence and displacement of different variants in Sri Lanka



Source: Allergy Immunology and Cell Biology Unit, Department of Immunology and Molecular Medicine, University of Sri Jayawardenepura



9. Recombinant Variants

- Recombination of variants of the same virus is a natural phenomenon
- WHO has been notified of several recombinant variants such as;
 - Recombination between Delta and BA.1 variants
 - Recombination BA.1 and BA.2 variants
- The same monitoring and assessment process is applied to these recombinants as for any other emerging variant
- Two Delta and Omicron recombinants and one BA.1 x BA.2 recombinant have now been given Pango lineage designations XD, XE and XF
- None of the preliminary available evidence indicates that these recombinant variants are associated with higher transmissibility or more severe outcomes