



World Health
Organization



GREEN
CLIMATE
FUND

Technical Webinar Series Climate Change and Health

WHO support for GCF country driven programming for the health sector; AFRO/EMRO (MENA) Regions Webinar

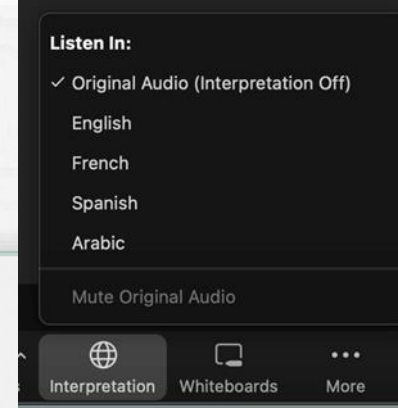
15 April 2025

9:00 – 10:30 CET



Interpretation

English, French, Spanish, Portuguese, Arabic



To activate interpretations (in English):

1. Click on the interpretation icon.
2. Select "English"
3. Optional : mute original audio

Pour activer les interprétations (en français):

1. Cliquez sur l'icône d'interprétation
2. Sélectionnez "Français"
3. Facultatif : couper le son d'origine

Para activar interpretación (en español)

1. Haga clic en el icono de interpretación.
2. Seleccionar "Español"
3. Opcional: silenciar el audio original

Para ativar as interpretações (em português):

1. Clique no ícone de interpretação.
2. Selecionar "Português"
3. Opcional: silenciar o áudio original

لتفعيل التفاسير باللغة العربية

1. اضغط على أيقونة التفسير.
2. اختر "العربية"
3. اختياري: كتم الصوت الأصلي

Agenda

Time	Agenda item	Speaker
9:00 – 9:05	Opening	Elena Villalobos Prats Country Support and Capacity Build Lead, Climate Change and Health, WHO HQ
9:05 – 9:20	Regional priorities for climate change and health in the African and Eastern Mediterranean region	Brama Kone Technical Officer, Climate Health and Environment, WHO AFRO
9:20 – 9:40	GCF Country Programming for Health	Chihenyó King'ara Regional Manager, Country Programming Department of the African Region, GCF
9:40 – 10:00	Operationalizing Readiness Strategy 2024-2027	Ram Subramanian Senior Readiness Specialist, GCF
10:00 – 10:25	Q&A	Moderated by Antonios Kolimenakis, WHO Panel: Chihenyó Kingara, Patrick Gitonga, Ram Subramanian, GCF Elena Villalobos - WHO
10:25 – 10:30	Close webinar	GCF/WHO - Patrick Gitonga/Antonios Kolimenakis



Opening remarks

Elena Villalobos Prats

Country Support and Capacity Build Lead, Climate Change and Health, WHO HQ



Regional priorities for climate change and health in the WHO African Region

Brama Kone

Technical Officer, Climate Health and Environment, WHO AFRO



Climate
change
is a **HEALTH**
Problem

Regional priorities for climate change and health in the WHO African Region

Climate change and health impact under the African and global context

- Climate change is the greatest threat to global health in the 21st century
- Human activities affected by global warming
- Africa's contribution to greenhouse gases is minimal
- High vulnerability of Africa due to socioeconomic underdevelopment and low adaptive capacities
- Growing attention to health in the global discourse on climate change



ISS, Africa

Key challenges for Africa



- Limited human and financial capacities to build new knowledge and resilient health systems
- Limited weather and climate data availability and used to inform coping strategies
- Need to raise health sector leadership in climate change adaptation

The road so far on Health and Environment in Africa, including CC...

1

2008: The Libreville Declaration on health and Environment in Africa

2011: Adoption of the Framework for Public Health Adaptation to Climate Change in the African Region

2

3

2022: The updated strategy for the management of environmental determinants of human health

2023: The Operational framework for building climate resilient and low carbon health system

4

5

RC74-2024: Framework for building climate-resilient and sustainable health systems in the WHO African Region (2024-2033)

Key recommendations and action points



Translating international agreements on climate change and health into national policies, strategies, and action.



Revitalizing the implementation of the Libreville Declaration on Health and Environment to support climate adaptation and resilience building.



Reinforcing climate change and health technical capacities at regional and country levels.



Building scientific evidence on climate change and health for adaptation and resilience



Mobilizing financial resources for adaptation and resilience building.

WHO-led Alliance for Transformative Action on Climate and Health (ATACH)

- Over 90 countries including **29 in Africa** have signed the COP26 Health Commitment (March 2025).
- African countries are actively engaging in the ATACH and other climate change initiatives, including tackling air pollution and impact on health





Thank you!



GCF Country Programming for Health

Chienyo King'ara

Regional Manager, Country Programming Department of the
African Region
Green Climate Fund



WHO GCF Country Programming for Health

Chiheny Kangara | Country Coordinator | DAFR
April 2025

How we work

COUNTRY-DRIVEN

- Readiness programme supports country planning
- GCF programming is aligned with country priorities



A RANGE OF FINANCING INSTRUMENTS

- leverage blended finance
- Piloting support for new financial structures



RISK-TAKING, PATIENT CAPITAL

- accept higher risks to support early-stage project development & innovations to catalyse climate finance



AN OPEN, PARTNERSHIP ORGANISATION

- over 200 Accredited Entities and delivery partners



BALANCED ALLOCATION

- targeting 50:50 allocation between mitigation & adaptation

Where we focus

Reduced Emissions from:



Energy generation
and access



Transport



Buildings, cities,
industries and
appliances



Forests and
land use

Increased Resilience of:



Livelihoods of people
and communities



Health, food and
water security



Infrastructure and
the built environment



Ecosystems and
ecosystem services

KEY PRINCIPLES & CHANGES

Key principles

- **Country-centered** approach to readiness → moving away from the DP-centric approach
- **Systems thinking** and **programming** approach → moving away from 'grant-by-grant', incremental approach
- **Effectiveness** (delivery), **simplicity** and **speed** (processing)

Major changes

Focus of readiness on **GCF pipeline origination** and **country ownership**

Strategic, medium-term planning of readiness support, over 4 years

Streamlined objectives & modalities for **simplification** of processes, **increased speed**, **ease** of access & **predictable** resources

COUNTRY-LED Programming

Integrated Readiness PROGRAMME(S)*

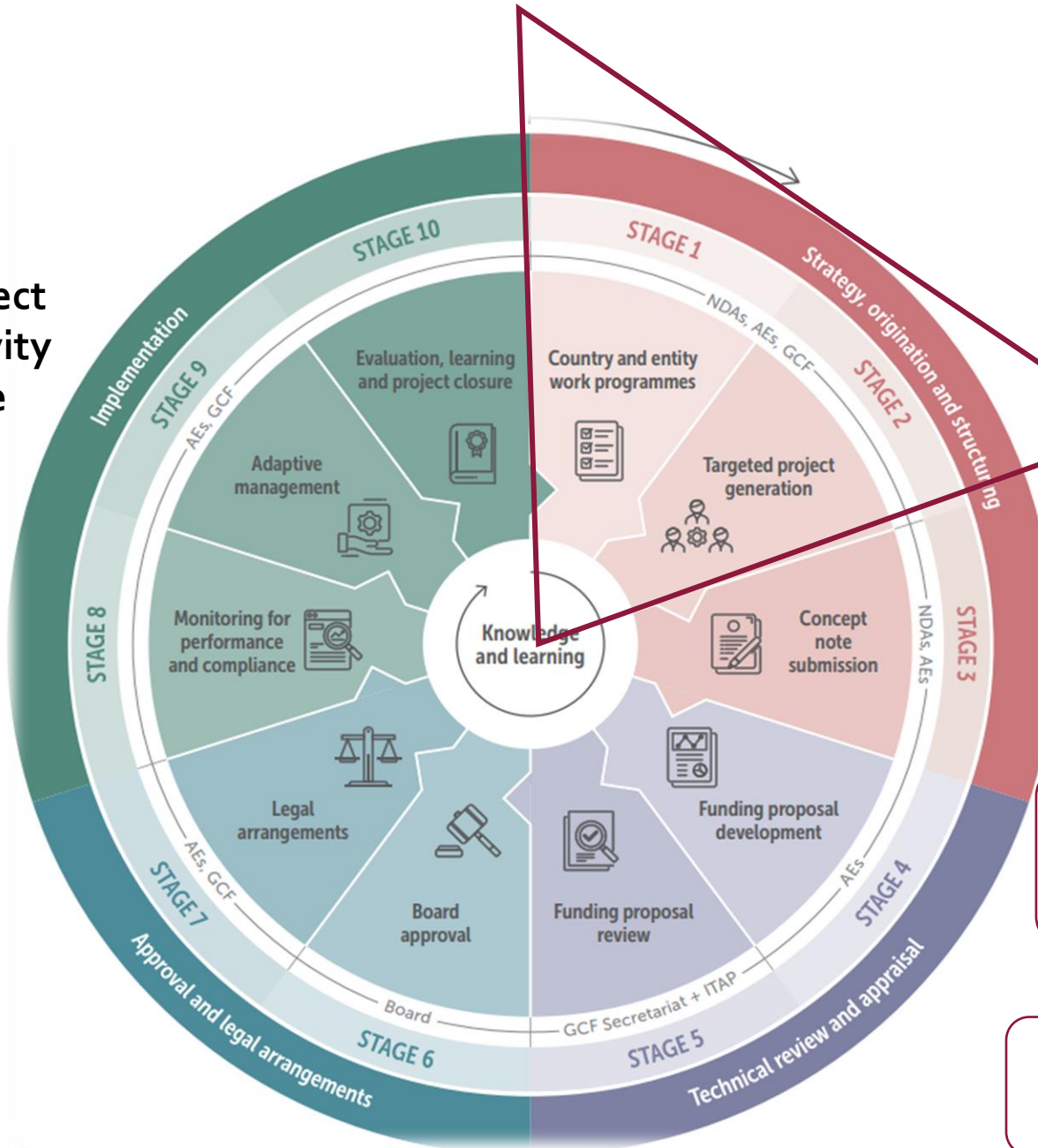
Competitive SELECTION of the **most suitable technical & financial offers**



COUNTRY-CENTRIC APPROACH



GCF
Project
activity
cycle



Readiness → Programming

Country programming and pipeline development is one process

Readiness is **deployed more intentionally** to support origination of GCF pipeline based on the Country Programme as the single origination point for GCF investments

Phasing out entity work programmes. Entity programming must originate from the Country Programme document

COUNTRY PROGRAMME – IDENTIFIED CLIMATE INVESTMENT PRIORITIES



Estimated amount of USD xxxx until 2030

- NDC under the Paris Agreement
- National Climate Change Policies & Action Plans
- National Adaptation Plans (incl. sectoral sector plans e.g. Health)

Identified sector priorities @ country level

- Disaster risk management
- Food and nutrition security
- Water and the Blue Economy
- Forestry, wildlife and tourism
- **Health, sanitation and human settlements**
- Manufacturing
- Energy and transport

COUNTRY PROGRAMMING – GCF SUPPORT GOING FORWARD



Challenges

- Numerous number of funding channels
- Imbalance between allocation to adaptation and mitigation
- Lack of system to identify and track climate finance
- Lack of capacity to develop bankable proposals
- Better coordination across agencies and stakeholders



Support needed

- Formulate a climate finance strategy
- Establish a criterion that identifies mitigation and adaptation interventions
- Strengthen national financing systems
- Capacity building for management skills, institutional disbursements, transparency and accountability
- Establish a platform for stakeholder dialogue

BENEFITS for developing countries



Strong country ownership and leadership, ensuring investments and policy are aligned with country commitments and ambitions such as NDC, NAP, LTS, and sectoral strategies



Enhanced coordination among government agencies, private sector, financiers, and international partners such as MDBs and climate funds, easing the administrative strain related to stakeholder coordination on developing countries



Systemic approach integrating economic, financial, environmental, social, and technological objectives, while addressing country-specific vulnerabilities, including climate adaptation needs and fiscal challenges



Catalytic mobilisation effect by providing a structured investment framework and combining diverse financing sources, including public, private, and international



Positive signal to the market, boosting investor interest and confidence by demonstrating policy stability, strategic direction and a clear investment framework



Accelerated action and impact by effectively aligning financing with prioritized projects and removing roadblocks to fast-track implementation

CP GUIDANCE: DEVELOPMENT PROCESS



- **National Level**

- Identify climate results areas for GCF support and cross cutting themes.
- Define key priorities per sectoral or integrated basis, with relevant private / public sector input.
- Ranking priorities for mitigation and adaptation targets.
- List key proposed interventions for each ranked priority and ensure early matching of accredited entities (DAE/IAE) mandates and range of green finance instruments at AE disposal to expected action and scale of investments for transformational effect.

- **Broader multistakeholder consultations (National, GCF and AEs, EE/partners)**

- Validate priorities and ranking against GCF's priorities and USP-2
- Testing the investment modalities and financial instruments to leverage GCF resources.
- Identify opportunities to co-design interventions into Project / Programme
- Collectively confirm results areas and projects under each.
- Discuss opportunities to deploy various financing instruments.

NEW COUNTRY PROGRAMME GUIDANCE NOTE



1. Country Context (1 page)

- Summary of environmental, socio-economic and climate change landscape
- Policy and regulatory analysis

2. Climate finance strategy and priorities (1 page)

- Financial landscape including existence of NDC/LTS/NAP financing plan
- Reflections on capacity of the financial system, fiscal space for mitigation and adaptation programmes, description of expected paradigm shift

3. Progress in implementation of GCF portfolio and lessons learned (1 page)

- Previous and current GCF-country collaboration
- Effectiveness of delivery, implementation mechanisms, adaptive management approaches, etc

NEW COUNTRY PROGRAMME GUIDANCE NOTE



4. Evidence from analytical work: prioritization of projects for climate impact (1 page)

- Drawn from various data sources to highlight climate hotspots
- Identify cross-cutting themes that will be integrated in all projects

5. Climate result areas and identified projects (3 pages)

- Propose and focus on three result areas
- Each result area will need to cover:
 - Readiness and preparatory support needed
 - Proposed project narrative contributing to the achievement of the relevant results area
 - Priority opportunities for complementarity, co-investments and strategic partnership
- Regional and multi-county programmes can also be included where unique opportunities are identified

NEW COUNTRY PROGRAMME GUIDANCE NOTE



6. Project implementation, quality assurance, monitoring and reporting (0.5 page)

- Adopt a cycle approach, including annual portfolio performance review, programme midterm review, end of cycle reporting

7. Risks to country programme implementation and mitigation measures (0.5 page)

- Potential risks that may impact delivery of the country programme

8. Results matrix (2 pages)

NATIONAL PRIORITIES:				
NDC/NAP/LTS OUTCOME:				
GCF IRMF OUTCOME / USP-2 TARGET:				
	Country programme outputs	Output indicators, baselines and targets	Financing instrument	Indicative resources
<u>Result Area 1</u> <u>NDC/NAP/LTS Outcome indicator(s):</u> •Xxx <i>Baseline: 0 (20XX); Target: 0 (20XX)</i> •Xxx <i>Baseline: 0 (20XX); Target: (20XX)</i>	Output 1.	•Xxx <i>Baseline: 0 (2024); Target: X (20XX)</i> •Xxx <i>Baseline: 0 (2024); Target:X (20XX)</i>	Grant, Loan, Equity, PSAA, PPF, SAP etc	
<u>Result Area 2:</u> <u>NDC/NAP/LTS Outcome indicator(s):</u> •Xxx <i>Baseline: 0 (20XX); Target: 9 (20XX)</i> •Xxx <i>Baseline: 0 (20XX); Target: 9 (20XX)</i>	Output 2.	•Xxx <i>Baseline: 0 (2024); Target: X (20XX)</i> •Xxx <i>Baseline: 0 (2024); Target:X (20XX)</i>		

DECIDING ON A FUNDABLE GCF PROJECT FROM A CLIMATE CHANGE PERSPECTIVE (1 OF 2)



There is a climate change problem

OR

There is a development problem

Ok! GCF is here to help 😊

Step 1: Do you have reasonable evidence that climate change is a contributor to the worsening performance of a sector, infrastructure, community, heritage, ecosystem etc.?

OR

Step 1: Do you have reasonable evidence that climate change is a contributor to the development problem?

No

Yes

Step 2: Do you have evidence of a solution which can effectively address the climate change contribution to the problem?

No

Yes

Step 3: Do you have evidence that concessional finance is needed to implement the climate change solution?

No

Yes

GCF may finance the project

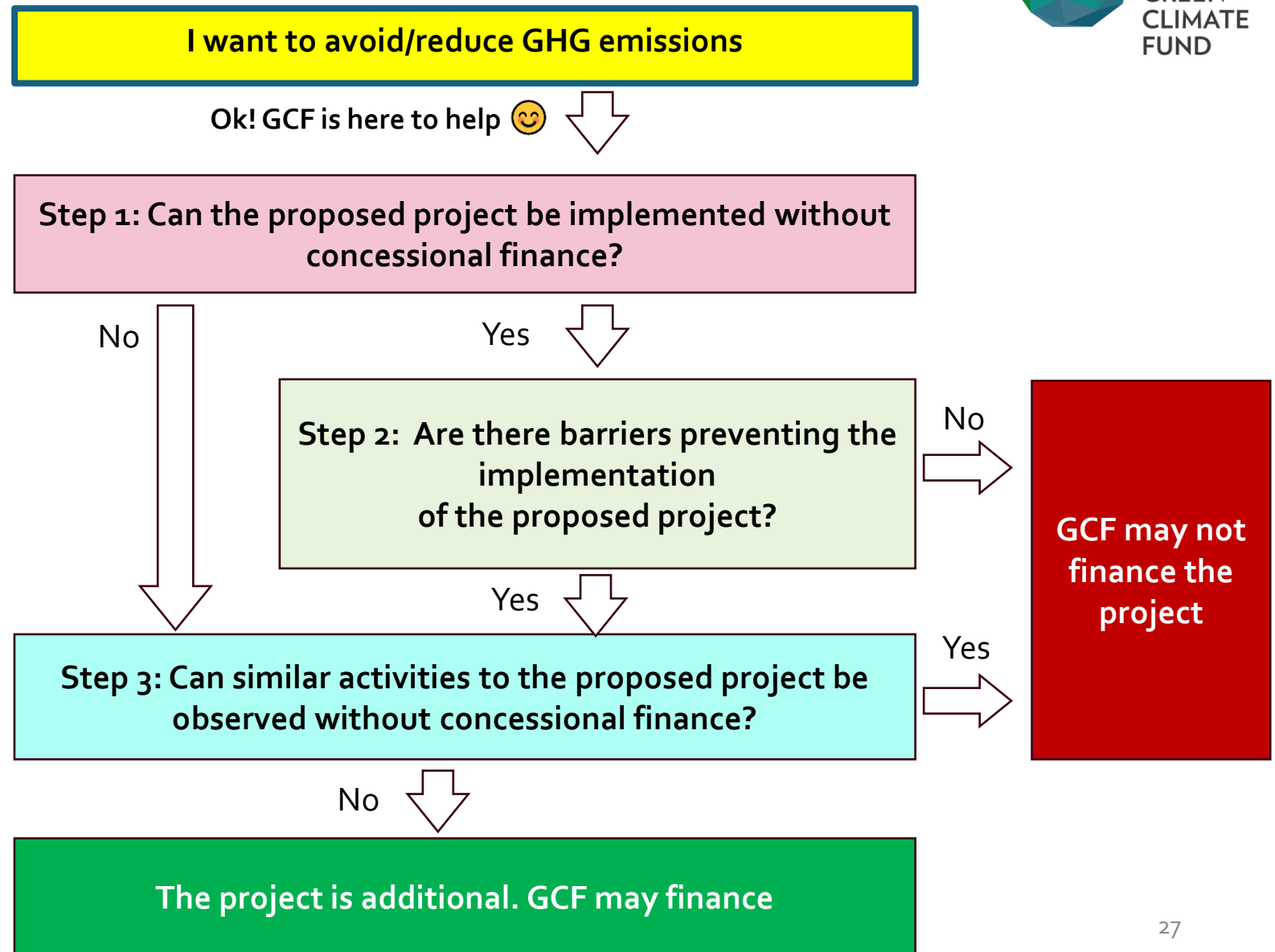
GCF may not finance the project

ADAPTATION

DECIDING ON A FUNDABLE GCF PROJECT FROM A CLIMATE CHANGE PERSPECTIVE (2 OF 2)



MITIGATION



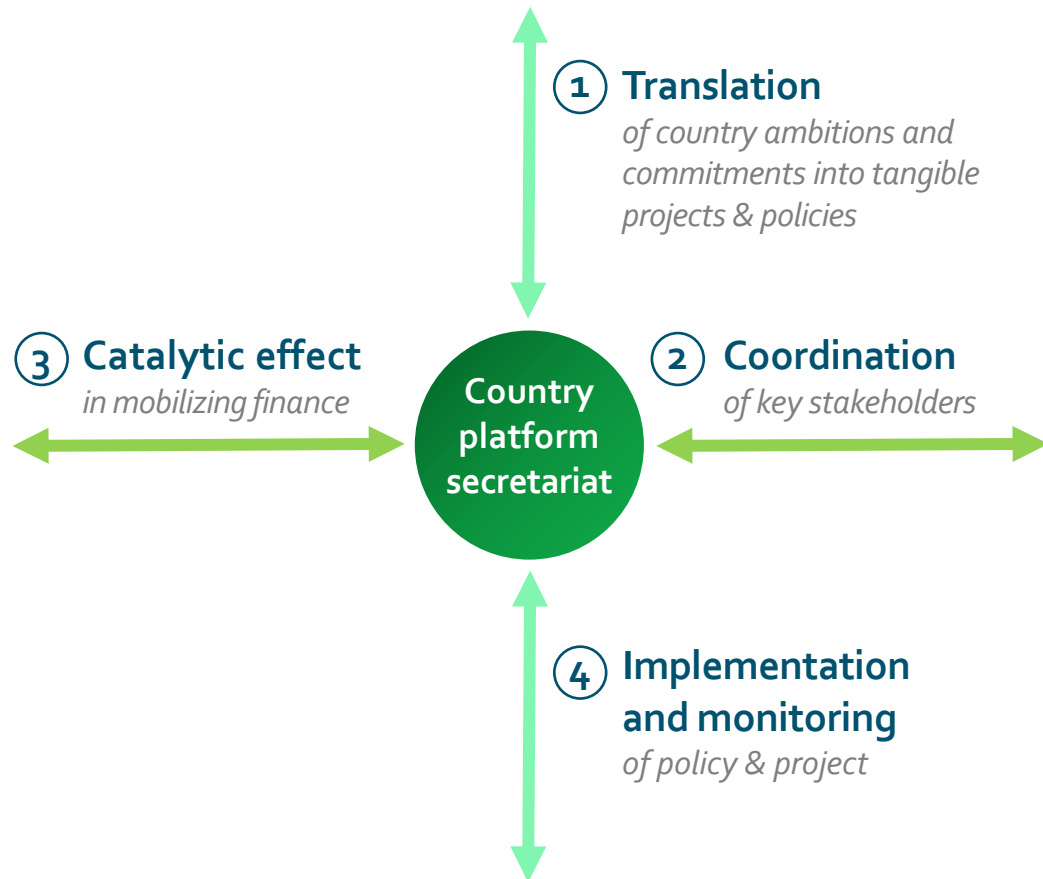
Country platforms

Country Platforms | Key outcomes



- 1 **Country experiences** | CPs provide a structured mechanism for mobilizing finance and driving systemic reforms, bridging national strategies with the global financial system. CPs must be country-led, inclusive, and aligned with national priorities
- 2 **Leadership** | High-level political commitment and strong government leadership are essential for systemic reform, enabling investment, securing international support, and ensuring policy consistency to build investor and stakeholder confidence.
- 3 **Inclusive governance for equitable outcomes** | Inclusive CPs engage multiple stakeholders, embed just transition measures to support workers and communities, and rely on strong governance structures to ensure transparency, accountability, and trust.
- 4 **Innovative financial structuring** | CPs bring together public and private finance in a programmatic and catalytic way to maximize impact and support climate-aligned economic development. Effective financial structures, blended finance models, macro-fiscal strengthening, project aggregation, and early-stage financing are essential to mobilize investment & attract institutional capital.
- 5 **Domestic financing** | Mobilizing domestic capital, financial markets, and NDBs is key for CP success, particularly in LDCs. Structural reforms, climate investment tracking, de-risking mechanisms, and asset transfer can help ensure long-term sustainability and private sector participation.
- 6 **Global financial architecture** | Reforming the financial system to address risk perceptions, high capital costs, and institutional fragmentation is crucial for scaling CP financing, improving debt management, and unlocking sustainable investment.
- 7 **Moving from planning to implementation** | CPs must shift from planning to execution with clear implementation pathways, early-stage finance, strong governance, & agile secretariat capacity, while maintaining flexibility, robust impact monitoring, and a "learning by doing" approach.
- 8 **International momentum** | Sustaining CP momentum requires strong global linkages, high-profile engagement in climate and finance summits, regional cooperation, and dedicated support for emerging CPs, ensuring alignment with international goals and financial reforms.
- 9 **The future of CPs** | CPs must grow beyond energy transitions to drive industrial transformation, integrate climate and nature goals, and mobilize large-scale finance, with regional and South-South collaboration. The Baku to Belem Roadmap should highlight their potential.

Country platforms act as coordination mechanisms...



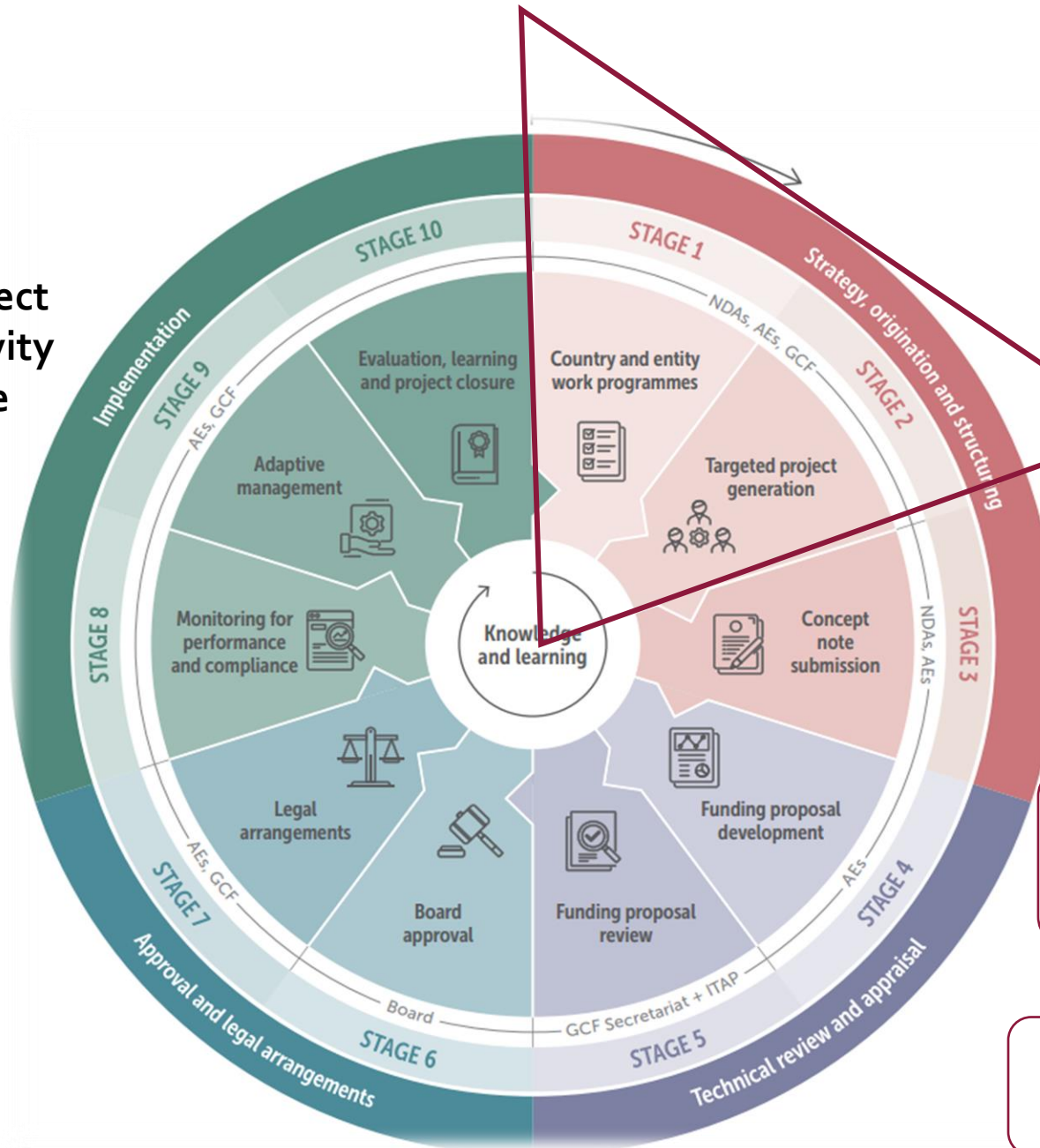
...that could fulfil several CORE FUNCTIONS

- 1 Translate country commitments and ambitions** (e.g., NDC, NAP, LTS) into sectorial priorities, policies, and tangible, climate-resilient investment pipelines
- 2 Coordinate stakeholder engagement** across government bodies, multilateral/bilateral agencies, private sector and civil society to secure alignment and effective collaboration
- 3 Catalyse financing at scale** by ensuring sustained investor engagement, structuring investment opportunities, and providing strategic support to tackle barriers to capital deployment
- 4 Implement policies and projects** by developing and preparing the pipelines, aligning projects with financial engineering, providing capacity building, facilitating policy dialog, removing roadblocks, and monitoring impact

COUNTRY-CENTRIC APPROACH



GCF
Project
activity
cycle

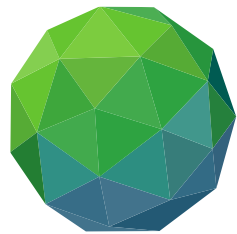


Readiness → Programming

Country programming and pipeline development is one process

Readiness is **deployed more intentionally** to support origination of GCF pipeline based on the Country Programme as the single origination point for GCF investments

Phasing out entity work programmes. Entity programming must originate from the Country Programme document



GREEN
CLIMATE
FUND

Raising
ambition.
Empowering
action.



GCF New Readiness Operational Modality

Ram Subramanian

Senior Readiness Specialist
GCF



Operationalizing Readiness Strategy 2024- 2027

Pattabiraman Subramanian, Senior Readiness Specialist
Department of Investment Services, GCF
April 2025

OUTLINE



- Readiness Brief Intro
- Portfolio Overview
- Readiness Strategy 2024-2027
- Step-by-step Access and Delivery Modalities & Toolbox
- Next Steps
- Q&A

INTRO TO READINESS

- Largest capacity building programme on climate change
- One decade of experience, evolution and learning
- Support to 142 countries, 200+ implementing partners, 800+ projects supported
- Support to NDC, NAP, LTS and other national climate finance policies, frameworks and strategies
- 55% of total support to SIDS / LDC
- 40 % of portfolio to NAP (107 countries with additional 13 more under processing)

READINESS PORTFOLIO OVERVIEW



Readiness and Preparatory Support Programme Monitoring Dashboard



Portfolio Manager

All

Country Name

All

Portfolio Overview

Portfolio Allocation

Results Allocation

List of grants

Grant Overview

Reports

Amendments

Disbursements

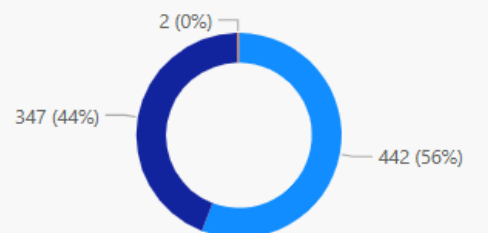
Effective Expired N/A

Region Manager Area FWA/GGA All

Region Manager Area FWA/GGA All Sub-Region All

Approved	791
\$683M	
Implementation	434
\$474M	
Disbursed	683
\$435M	
Pending Closure	131
\$100M	
Closed	274
\$143M	
Cancelled	18
\$11M	

Grants Approved



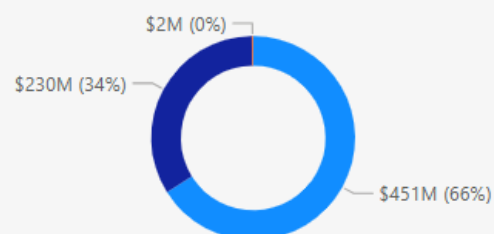
Framework Agreement General Grant Agreement Blank

Grants Approved by Year



All

\$ Grants Approved



Framework Agreement General Grant Agreement Blank

\$ Grants Approved by Year



All

The Dashboard covers the data of all Readiness Grants approved to date, excluding the Technical Support grants (RfP) and PPF grants.

GCF-WHO Portfolio

- 9 projects approved
- USD 4.4. million approved budget
- 8 single country and 1 country project
- 3 in Asia, 3 in LAC, 1 in Middle East and 2 in Africa
- 4 under legal processing, 3 under implementation and 2 are expired grants
- FWA under negotiation
- Readiness Needs – Health NAP, Health Sector Resilience to Climate Change, FCAS, Multi-Country Initiatives, South-South Cooperation

READINESS STRATEGY 2024-2027 & REFORMS

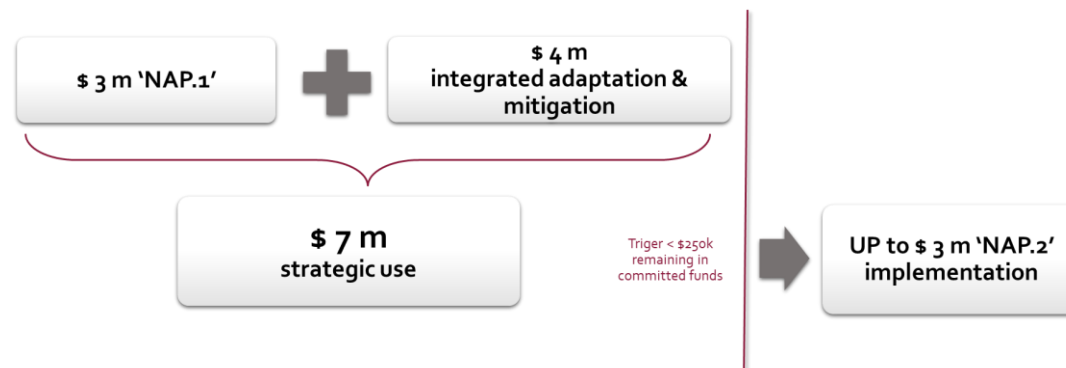


4-year integrated readiness support planning by the countries with support from the Secretariat

Board Approved Budget

☐ New, **2024-2027 Strategy** approved in Oct 2023

☐ USD **501.5 million**, 2024-2027



MAIN WINDOW ACCESS

- STRATEGIC, medium-term programmes



FAST TRACK (additional requests)

- GLOBAL Placements
- LDC/SIDS Placements [\$ 320,000]



ADDITIONAL REQUEST

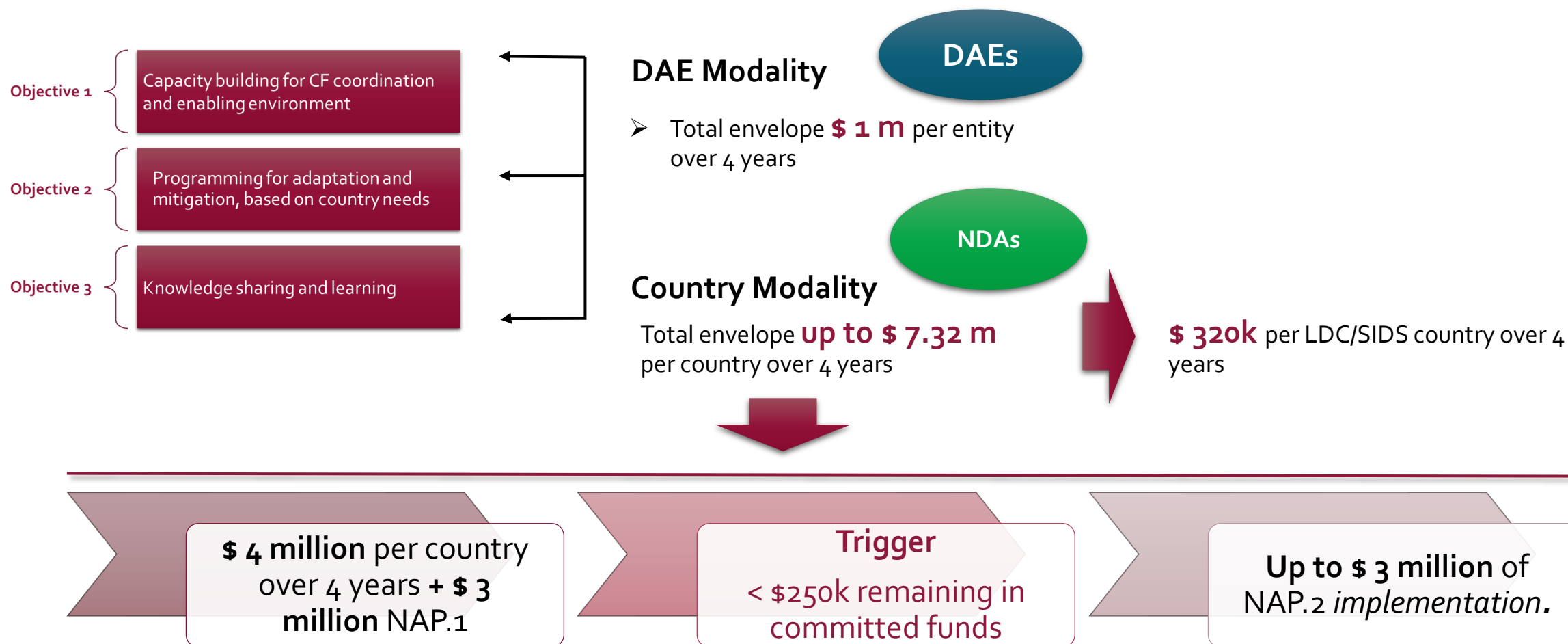
- 'NAP.2' additional support
- MULTI-COUNTRY programme

Intentional about FLEXIBILITY and SPEED of ACCESS, while promoting systems thinking & better planning

READINESS 2024-2027: FINANCING MODALITIES



2024-2027



READINESS - PLANNING AND PROGRAMMING



Applicable to the Country Support Modality and the DAE Support Modality*

Strategic, medium-term programmes based on **4-year planning**

ONE multi-year PROGRAMME

➔ 4 years

- **mid-term** review to course correct in evolving circumstances & priorities ('still fit-for-purpose?')

or

TWO multi-year PROGRAMMES

➔ Based on planning for 4 years

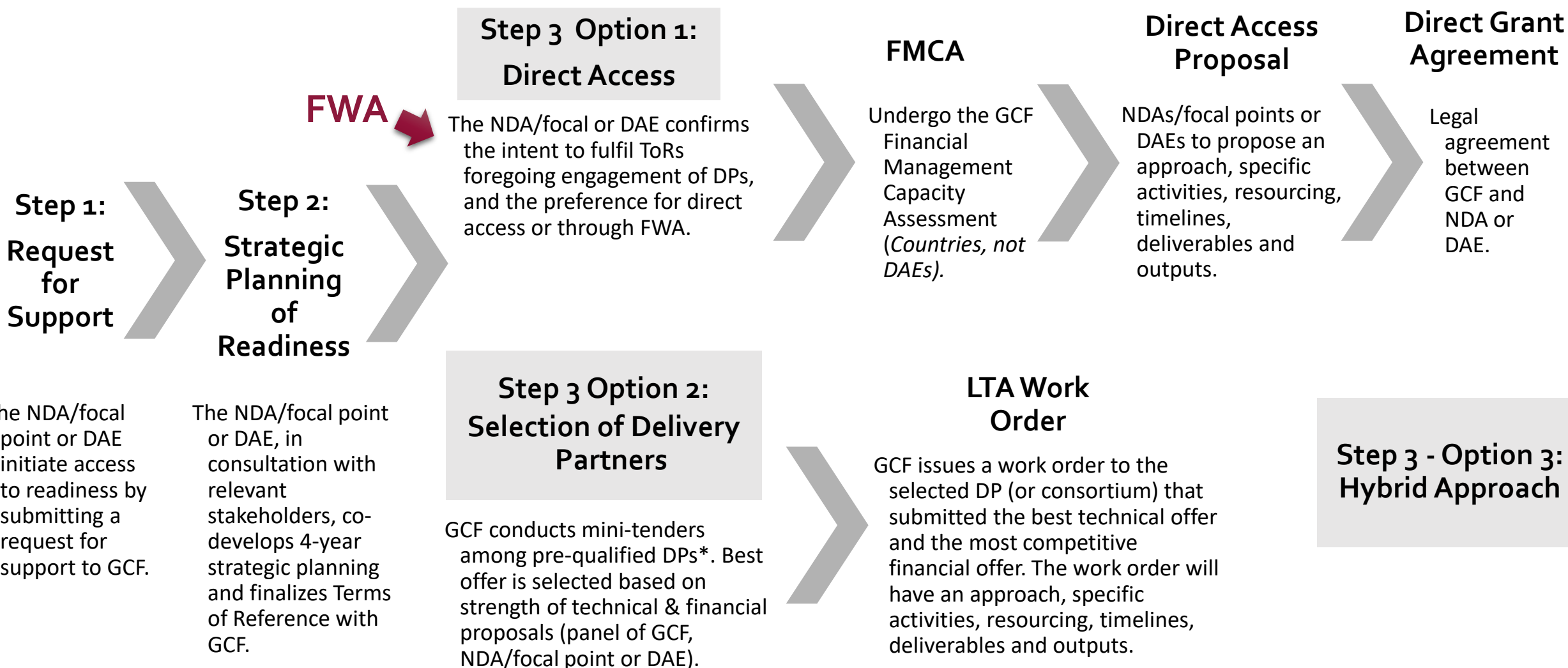
- **With any combination of USD values allocated between the two programmes.** Used when requirements are **not suited** for the integrated approach

Programme size

- Country modality:
 - Min size USD 1 M
 - Max USD 7.32 M
- DAE modality:
 - Max size USD 1 M

Intentional about efficiency,
speed, predictability

ACCESS PROCESS FOR COUNTRIES & DAEs



REQUEST FOR SUPPORT



Toolbox

- A standardised Request for Support template, for countries and DAEs
<https://www.greenclimate.fund/document/request-support-template>



Request for Support Templates [Step 1]

To: Green Climate Fund Secretariat
Date:

SUBJECT: REQUEST FOR SUPPORT, MAIN WINDOW

As the *Choose an item.* for [Country's/Region's Name], we hereby request readiness support under the main window, with the following details.

Financing Window

The 2024-2027 readiness strategy establishes the Country Support modality and the DAE Support modality. Please indicate which modality is being access for this request. Please choose one option:

- ☐ Country Support, Main Window ☐ DAE Support, Main Window

Access Modalities

For both Countries and DAEs, please specify whether the main window will be utilised either through one or two integrated programmes, to address the identified readiness needs in a strategic and medium-term manner.

- ☐ Main window – **ONE PROGRAMME** to the total envelope allocated for the country or DAE support, covering all three objectives outlined in the 2024-2027 readiness strategy.

Please choose a planned or preferred access modality. Please choose one option:

- ☐ Direct Access by the NDA/focal point, in their coordination capacity, or by the DAE
- ☐ Using a pre-qualified delivery partner, based on selection of the best technical and financial offer
- ☐ Hybrid: a mix of direct access and using a competitively selected pre-qualified delivery partner

- ☐ Main window – **TWO PROGRAMMES** with any combination of USD funding between them, up to the total envelope allocated for the country or DAE support.

PROGRAMME 1	<i>Please choose area(s) where support is required</i> <input type="checkbox"/> Objective 1: Institutional strengthening and strategic frameworks <input type="checkbox"/> Objective 2: Pipeline development & implementation <input type="checkbox"/> Objective 3: Knowledge-sharing and learning	<i>Please choose one option:</i> <input type="checkbox"/> Direct Access by the NDA/focal point, in their coordination capacity, or by the DAE <input type="checkbox"/> Using a pre-qualified delivery partner, based on selection of the best technical and financial offer <input type="checkbox"/> Hybrid: a mix of the two options
PROGRAMME 2	<i>Please choose area(s) where support is required</i> <input type="checkbox"/> Objective 1: Institutional strengthening and strategic frameworks <input type="checkbox"/> Objective 2: Pipeline development & implementation <input type="checkbox"/> Objective 3: Knowledge-sharing and learning	<i>Please choose one option:</i> <input type="checkbox"/> Direct Access by the NDA/focal point, in their coordination capacity, or by the DAE <input type="checkbox"/> Using a delivery partner, based on selection of the best technical and financial offer <input type="checkbox"/> Hybrid: a mix of the two options

Contact Information: *Name, position and email address of the contact person.*

Signature _____ Authorised Signatory's Name, Position _____

STRATEGIC, MEDIUM-TERM PLANNING



Actions



- To strategically plan over the medium term, from current readiness status (baseline) → where to be by end of Year 4 (result areas).



- To coordinate action and engage relevant stakeholders
- Readiness needs and gaps identified through strategic, medium-term planning will ultimately form the ToRs for pre-qualified DPs or help inform the Direct Access Proposal.
- Assistance from the Secretariat upon request.
- Countries and DAEs can also utilise the expertise and resources, such as the GCF placement experts.



Toolbox


1. A guide for strategic planning of readiness and developing Country Readiness ToRs
2. A guide for strategic planning of readiness and developing DAE Readiness ToRs
3. A standardised Country Readiness ToR template
4. A standardised DAE Readiness ToR template

OPTION 1. DIRECT ACCESS



Actions for NDAs & DAEs, and GCF



- Strategic, medium-term planning
- Confirm NDA/government agency or DAE can
 - Enter into a direct grant agreement with GCF
 - Receive funds directly from GCF
- FMCA 
- Direct Access Proposal Submission 
- Individual grant agreement 



Toolbox

1. FMCA [template](#)
2. Direct Access Proposal template
3. Standard grant agreement

If confirmation for direct access cannot be obtained, there is also an option to use entities with Framework Readiness and Preparatory Support Grant Agreements with the GCF Secretariat, who can utilise their existing agreements and receive readiness funds to implement readiness support for the country. A list of current framework agreement holders includes UNDP, UNEP/UNEP-CTCN, GIZ, FAO, GGGI, CCCCC, CAF, UNIDO, IDB, SPC, SPREP.

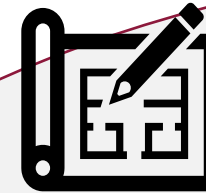
OPTION 2. PRE-QUALIFIED DPs



Actions for NDAs and DAEs, and GCF



- Strategic, medium-term planning/ToR, in consultation with relevant stakeholders
- Mini – tender for best proposal from pre-qualified DPs*
- Work Orders based on the winning proposal (no need for individual grant agreements)



Toolbox

- <https://www.greenclimate.fund/document/mini-tender-proposal-template>
- A work order for DPs*

* GCF pre-qualifies DPs. Selection criteria, requirements, and areas of expertise will be published widely, including on local/NDA platforms. Pre-qualified DPs will be grouped per area of expertise:

- Lot 1: **Policy and Regulation lot**, incl. Vulnerability and Resilience (V&R) sub-lot, Private Sector (PS) Engagement sub-lot, and Knowledge Management and Learning (KM&L)
- Lot 2: **Climate Investment Design and Implementation**, incl. V&R sub-lot, PS Engagement sub-lot, and KM&L

OPTION 3. HYBRID APPROACH



Actions



- Project planning and coordination with relevant stakeholders
- Readiness Access
 - For projects implemented through pre-qualified DPs, the NDA develops ToRs that are addressed via mini-tenders.
 - For directly access, the NDA develops Direct Access Proposal.
- Readiness Delivery
 - For direct access, Direct Access Proposal + Grant Agreement
 - For pre-qualified DPs → Mini-tenders + Work Orders


Example

- *Programme 1 - Specialised Support → pre-qualified DPs → Objective 2*
 - *To leverage specialised external expertise*
 - *To benefit from streamlined contracting processes provided under LTA arrangement*
- *Programme 2 - Direct Implementation → Country or DAE → Objectives 1 and 3*
 - *To closely manage regulatory reform processes and other activities that benefit from a more hands-on approach or*
 - *To benefit from local expertise and capacities.*

ZOOMING IN: READINESS FWAS

- Under Direct Access, countries can utilise entities with Framework Readiness and Preparatory Support Grant Agreements with the GCF Secretariat.
- **Key Principles:** Country Ownership as the basis for all planning and implementation → Alignment of readiness activities with national priorities.
- **Benefits:**
 - Access to existing agreements with the GCF Secretariat.
 - Expedites readiness support delivery.
 - Reduces administrative complexities for the country.
 - Allows multi-country and DAE implementation
- **Next Steps for Countries and DAEs:** Identify readiness needs = Strategic Planning.





GREEN
CLIMATE
FUND

ABOUT GCFPROJECTS & PROGRAMMESNEWS & EVENTS
DATA & RESOURCESGCF BOARD

SEARCHLOGIN

PROJECTS & PROGRAMMES / COUNTRY & ENTITY ENGAGEMENT

Readiness & preparatory support

GCF's Readiness Programme provides resources for countries and entities to efficiently engage with GCF

OverviewCountry windowDAE windowGCF placementsDelivery partnersLearn more

Overview of the Readiness Programme

Note to the public

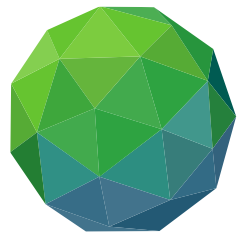
Beware of scam emails or messages purporting to be from the Green Climate Fund (GCF) or any of its representatives that come with grant, funds, compensation, or partnership offers. These fraudulent offers and emails are not in any way associated with GCF, nor with any of its personnel. These messages are scams and phishing emails. Click [here](#) to learn more.

SHARE



RELATED

[Readiness Strategy 2024-2027](#)



GREEN
CLIMATE
FUND

Raising
ambition.
Empowering
action.



Q&A

Moderated by **Antonios Kolimenakis, WHO**

Panel:

Chihenyo Kingara

Patrick Gitonga

Ram Subramanian

Elena Villalobos Prats

Thank You!

ATACH Community of Practice

<https://www.atachcommunity.com/>

Climate Change

<https://www.who.int/teams/environment-climate-change-and-health/climate-change-and-health>

Email: healthclimate@who.int

