

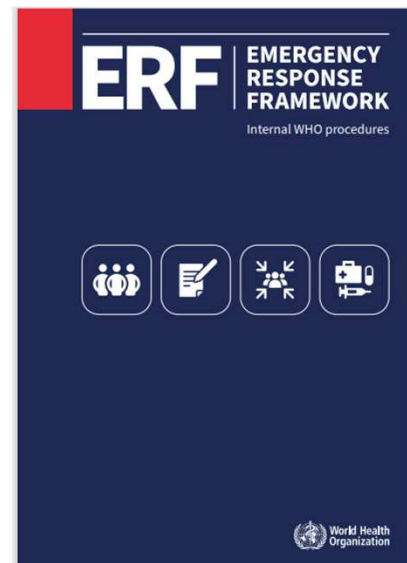
Emergency Response Framework and the Incident Management System



1

Background

- The Emergency Response Framework (ERF) is **internal WHO guidance** on how WHO manages the risk assessment, grading and operational response to public health events, in support of Member States and affected communities. Includes performance standards and indicators.
- Adopts an **all-hazards** approach
- Focuses primarily on **scaling up and managing response activities** for acute events and emergencies.
- Complemented by WHO's **Emergency Standard Operating Procedures**, and consistent with interagency emergency protocols and commitments, and IHR (2005).



2

WHO's core commitments and guiding principles

WHO's core commitments in emergency response

In response to public health events and emergencies, WHO will:

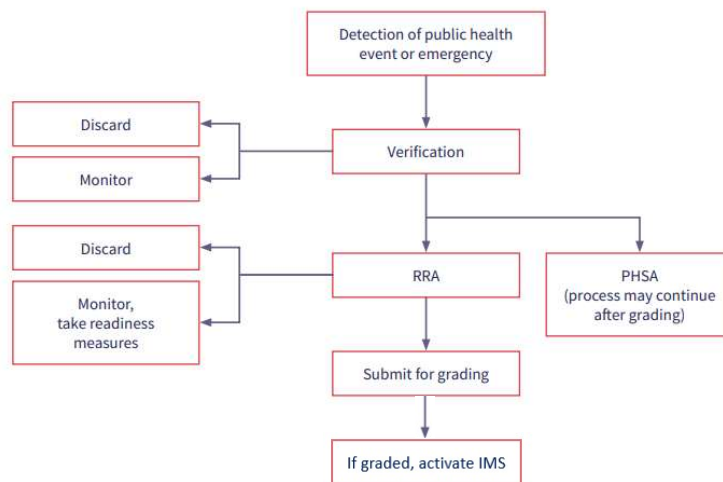
- Undertake a timely, independent and rigorous **risk assessment**
- Deploy **sufficient expert staff and material resources** early in the event
- Establish a **clear management structure** for the response, based on the **IMS**
- Develop an **evidence-based response strategy, plan and funding appeal**
- Ensure that adapted **disease surveillance, early warning and response systems** are in place
- Provide **up-to-date information** on the health situation and health sector performance
- **Coordinate the health sector response** to ensure appropriate coverage and quality of interventions and health services
- Integrate measures for **PRSEAH** in response operations for the protection of affected populations and of emergency responders, in line with the **IASC PSEA outcome measures**
- Promote and monitor the application of **technical standards and best practices**
- Provide relevant **technical expertise** to affected Member States and all relevant stakeholders

WHO's guiding principles for emergency response

- **Country focus** through concentration of WHO resources as close to the affected population as possible to support national authorities and local actors and encourage active participation of communities
- **Humanitarian principles** (humanity, neutrality, impartiality and independence) are central to WHO's emergency work
- **Evidence-based and knowledge-based programming** applied by WHO to ensure quality and effectiveness of response
- **Partnership** prioritized by WHO at all levels with commitment to the principles of partnership
- **Protection** principles incorporated by WHO into health emergency interventions
- **Gender, age and vulnerability sensitivity** in the design and implementation of emergency operations
- **Protection from sexual exploitation, abuse and harassment**
- **Accountability** to the populations WHO serves and to Member States, partners and donors
- **Ensuring the safety and security of responders**
- **Strengthening the humanitarian-development-peace nexus** by engaging with development partners to reduce risks and vulnerabilities and work towards collective outcomes



Detection → Response



The Incident Management System (IMS) and Incident Management Support Teams (IMSTs)

The IMS is a standardized but flexible all-hazards approach to managing WHO's response to an emergency.

Different technical and operational pillars work together to deliver a cohesive emergency response, within and beyond WHE, and linked across the different levels of the organization.

The structure and scale of the IMST is adapted based on the needs of the response.



3 central concepts

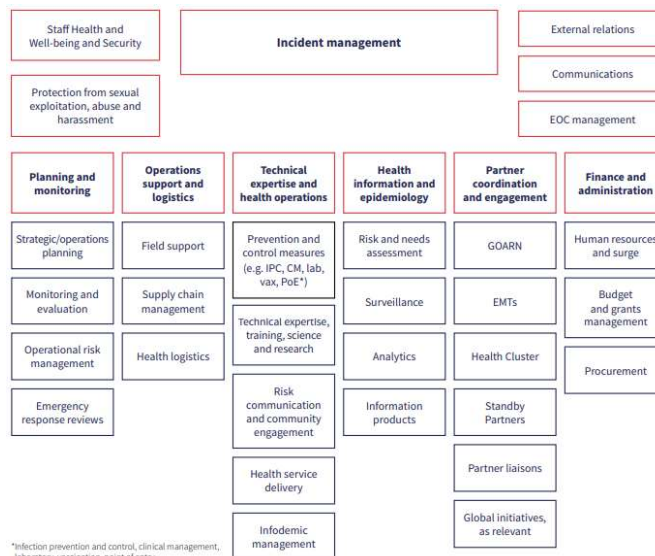


5

The IMST is a flexible, scalable organising structure tailored to a response

For WHO, the **core IMS functions** are:

- Leadership and coordination
 - Planning and monitoring
 - Operations support and logistics
 - Technical expertise and health operations
 - Health information and epidemiology
 - Partner coordination and engagement
 - Finance and administration
- The role of the IMST at all levels of the organization is to **support the country response**.
 - Members work across teams and levels to optimize cross-pillar collaboration and deliver the goals of the emergency response.
 - Research is a critical part of Technical Expertise and Health Operations, and has been embedded into WHO's response for many outbreaks (e.g. Ebola and other VHF, COVID, Zika, MERS, and more..)



6