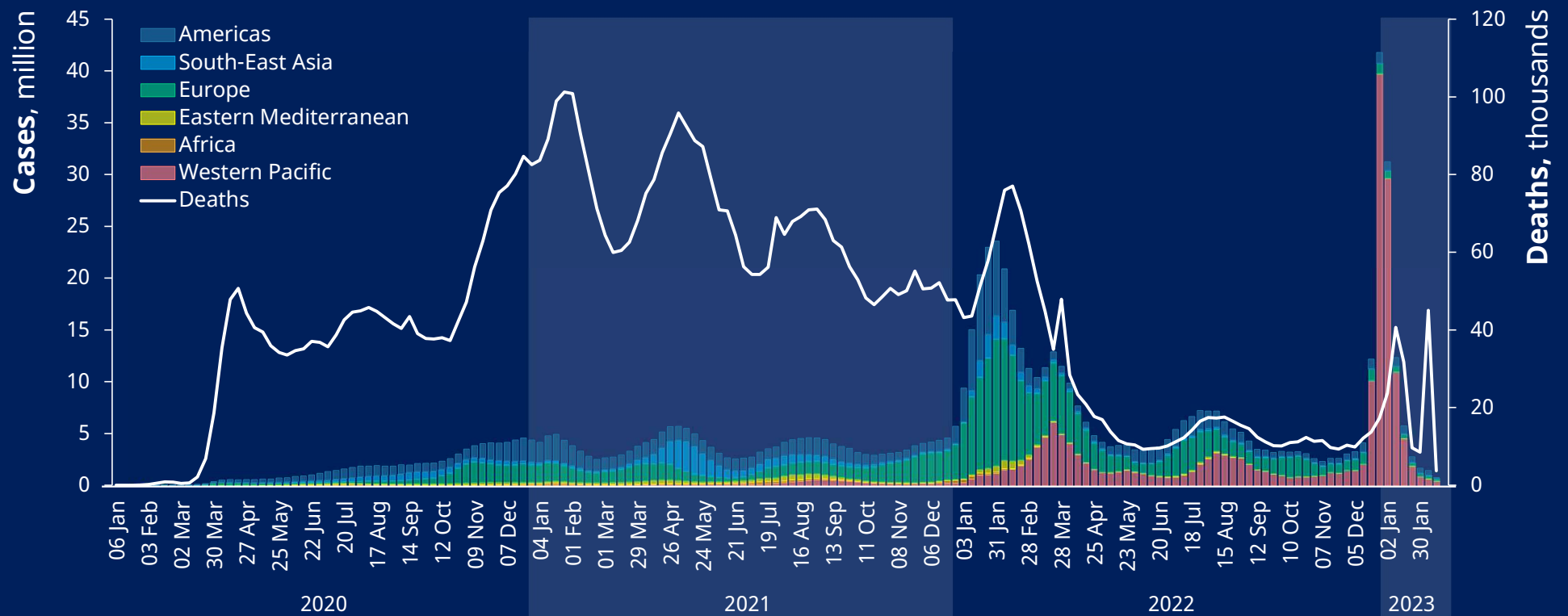

Division of Health Emergency Intelligence and Surveillance Systems (WSE)

WHO Health Emergencies Programme

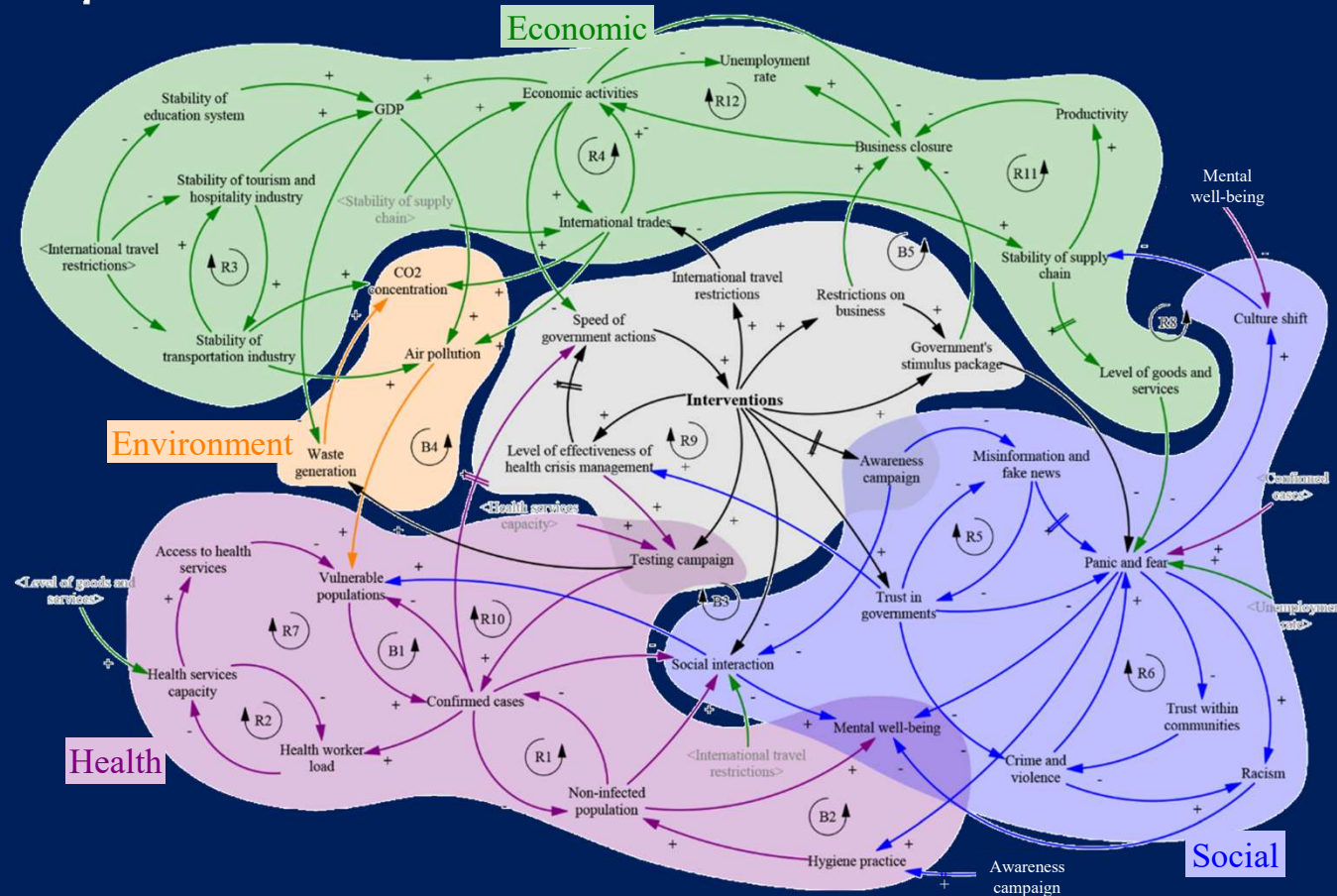
9 January 2024

How COVID-19 surveillance data is presented



Source: COVID-19 Weekly Epidemiological Update; Data retrieved 11 Feb 2023. Minor deviation from online dashboard due to different data starting point.

COVID-19 as experienced



Decisions faced during emergencies

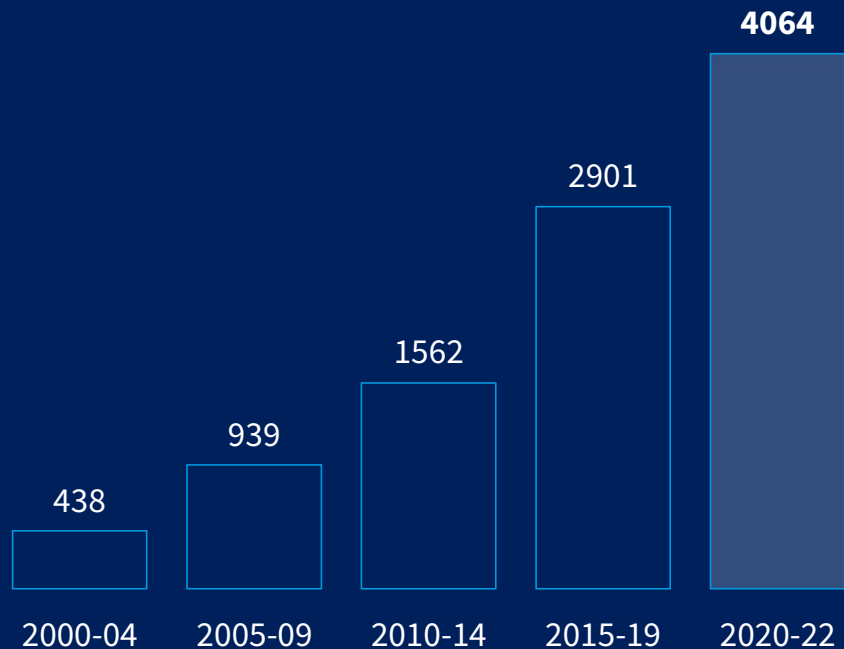


No single surveillance system able to respond to all the information needs of decision makers

Growing trend of innovative activities in public health intelligence

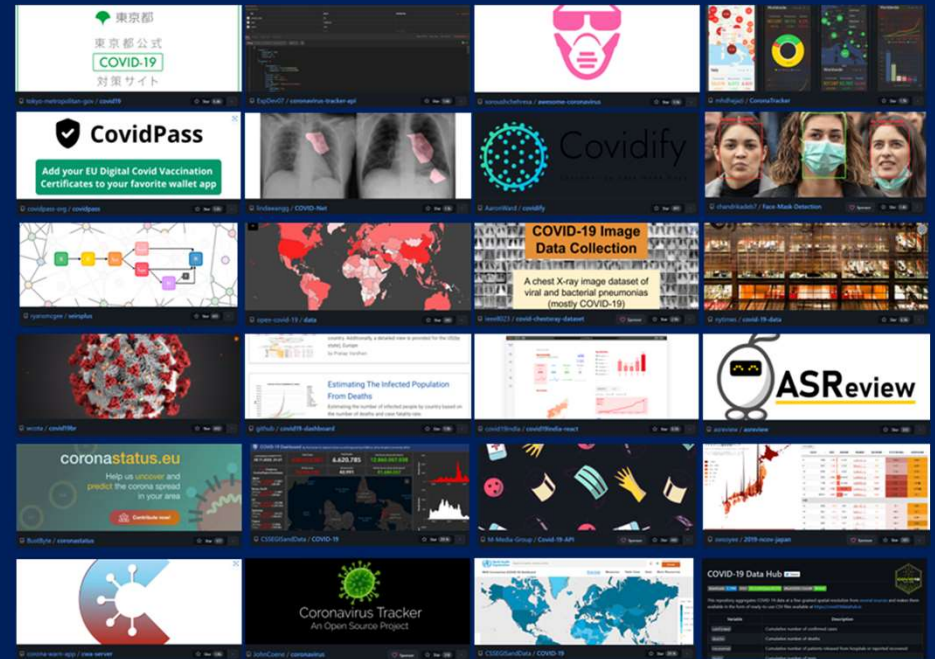
Research on methods, technologies, tools in surveillance and epidemic intelligence

2000-22, PubMed

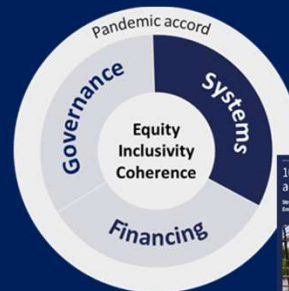


230,000+ Github repositories on COVID-19

Jan 2020 – Feb 2023



WHO Health Emergencies Programme support in this rapidly changing landscape



IHR revision, INB WHO CA+ & other instruments

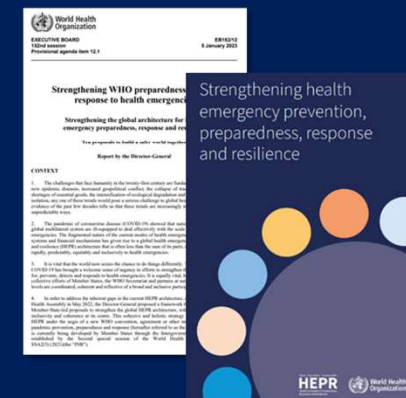


National Investment Plans & Financing for sustainable PPR (FIF +++)



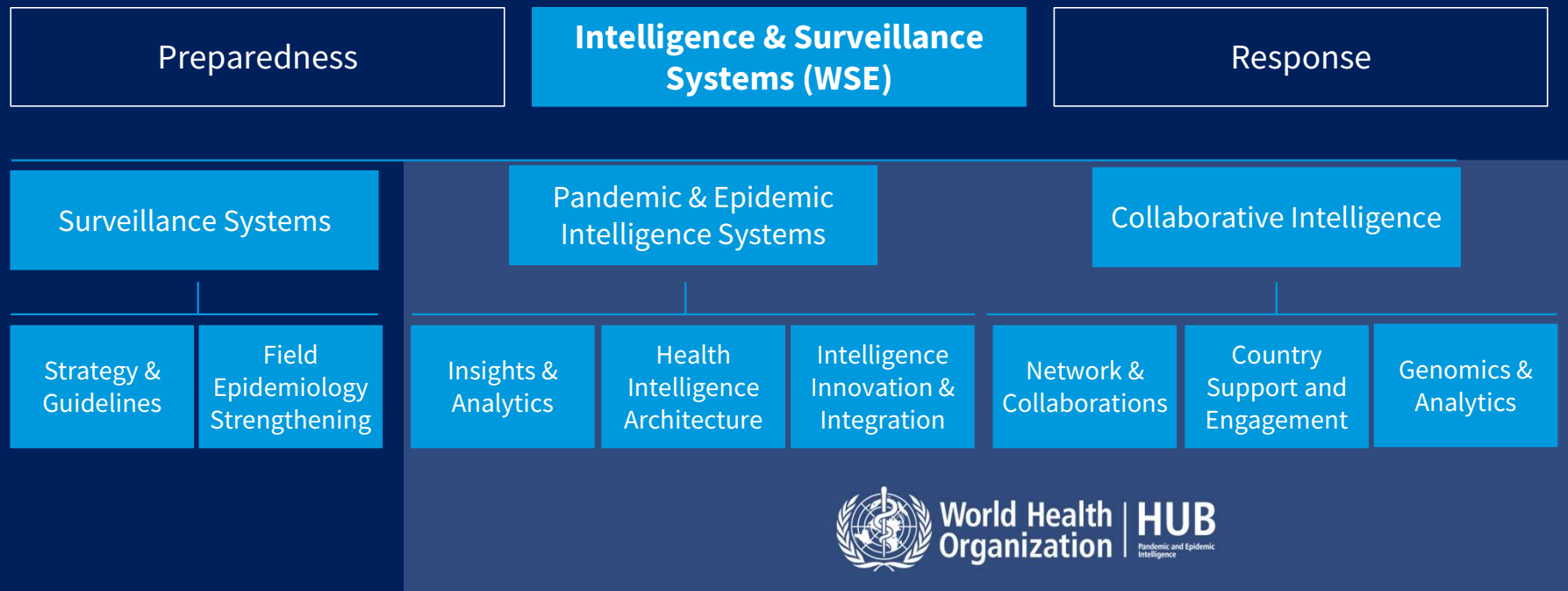
- Surveillance
- Lab
- Workforce

Health Emergency Preparedness, Response & Resilience (HEPR) Framework



New Division & WHO Hub for Pandemic and Epidemic Intelligence

WHO Health Emergencies Program

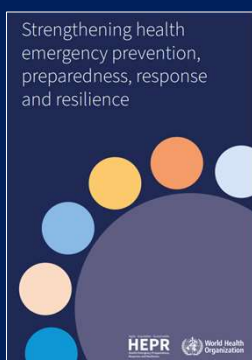


Our strategy is centred on implementing Collaborative Surveillance as part of the Health Emergency Preparedness and Response (HEPR) framework

300+ recommendations from COVID-19 and recent major emergencies



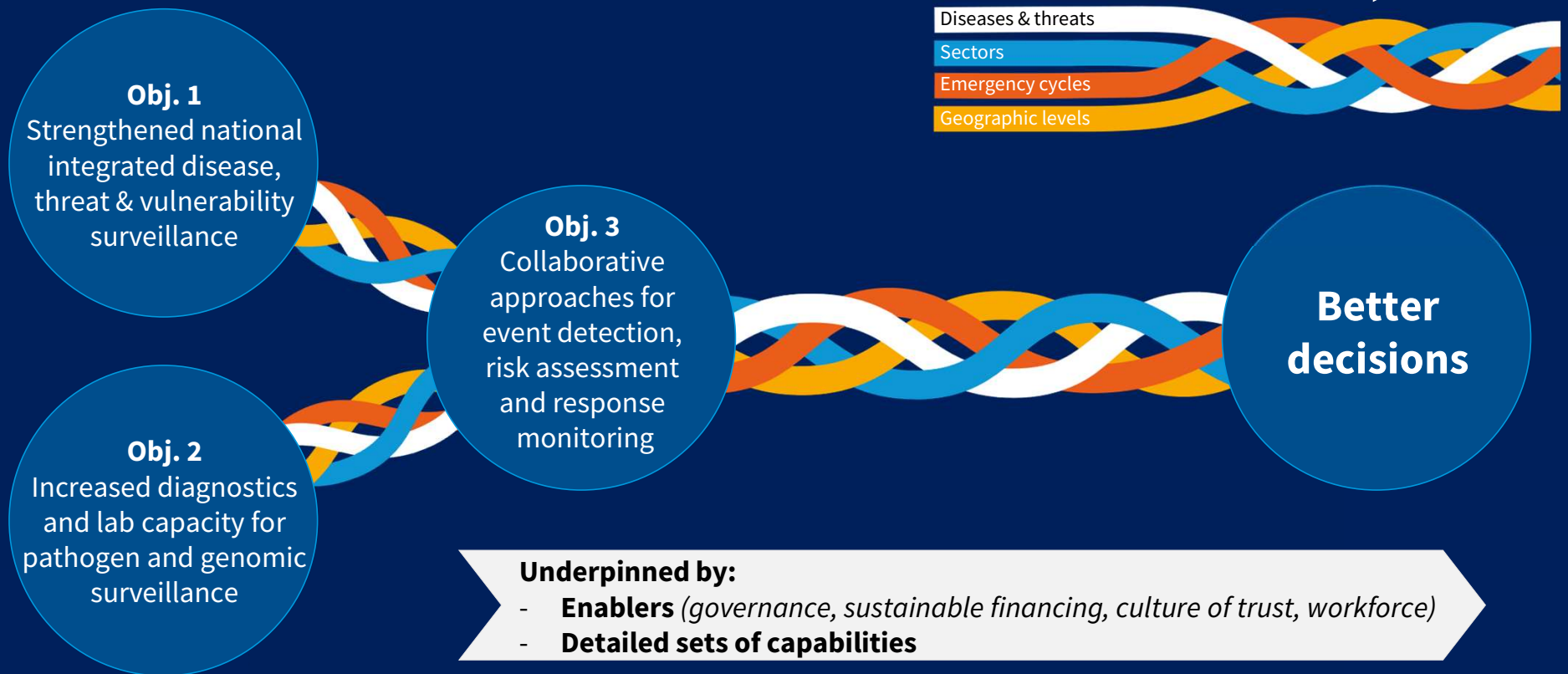
5 interconnected components



Collaborative surveillance

The systematic strengthening of capacity and collaboration among diverse stakeholders, both within and beyond the health sector, with the ultimate goal of enhancing public health intelligence and improving evidence for decision making

Three critical objectives targeting the development of capabilities for collaborative surveillance



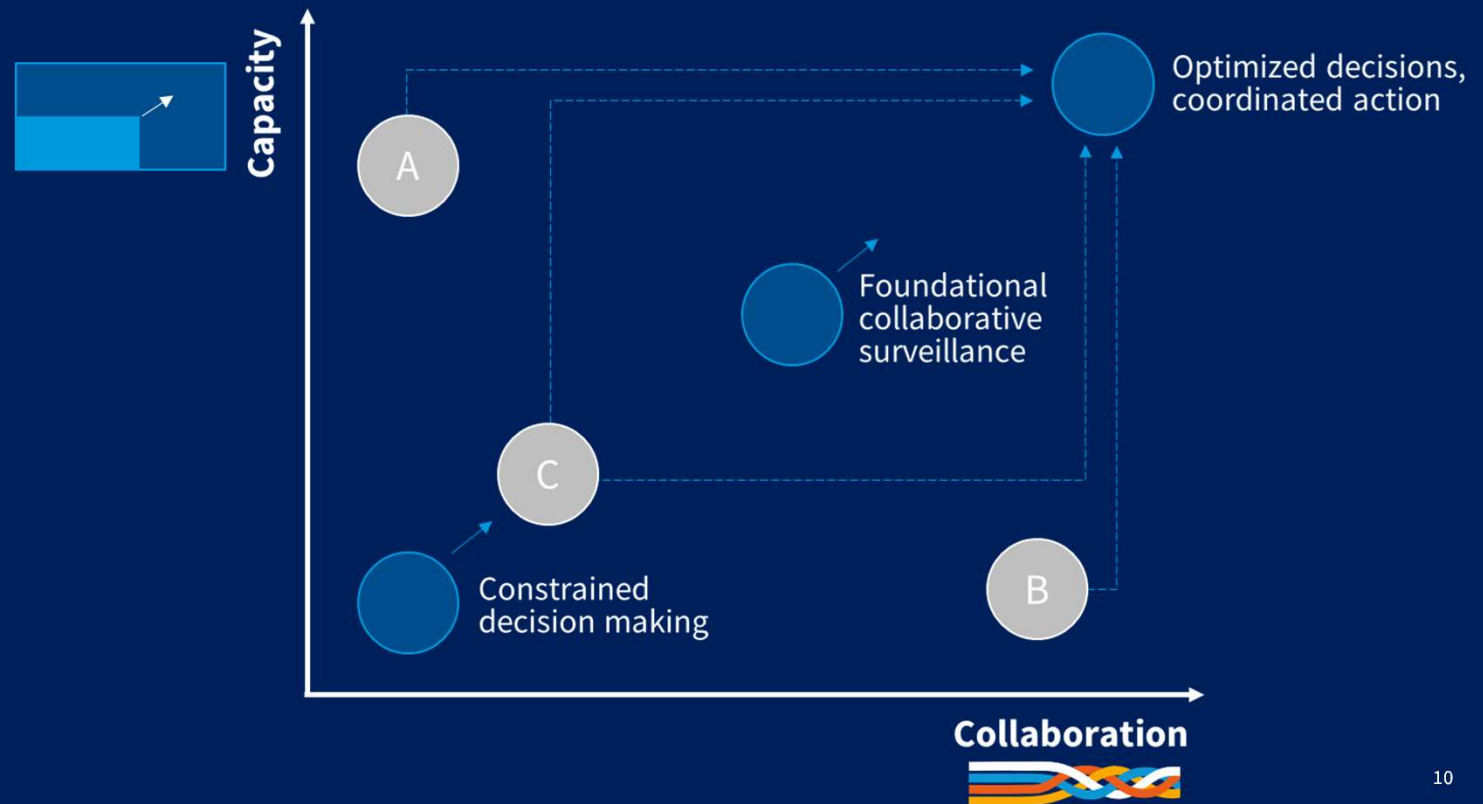
A modern vision of disease surveillance systems and collaboration

Not to disrupt infectious disease surveillance or vertical/specialized programmes

But to address the intersection of these programmes, enable flexibility, and incorporate other relevant data

Working across

- **Diseases and threats**
- **Sectors**
- **Emergency cycles**
- **Geographic levels**

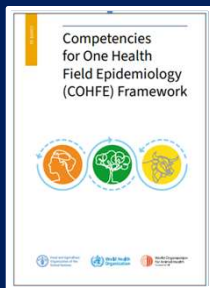


IPSN

The International Pathogen Surveillance Network (IPSN)



Health Security Partnership in Africa



One Health Competencies

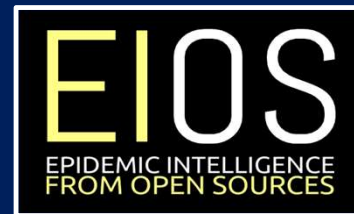


Collaborative Surveillance



The Collaboratory: Better data, better analysis, better decisions

Epidemic Intelligence from Open Sources (EIOS)



Strengthening National Public Health Agencies (NPHAs)



Open Source Programme Office



Global Field Epidemiology Partnership (GFEP)



Pandemic Decision Simulator



Thank you

