

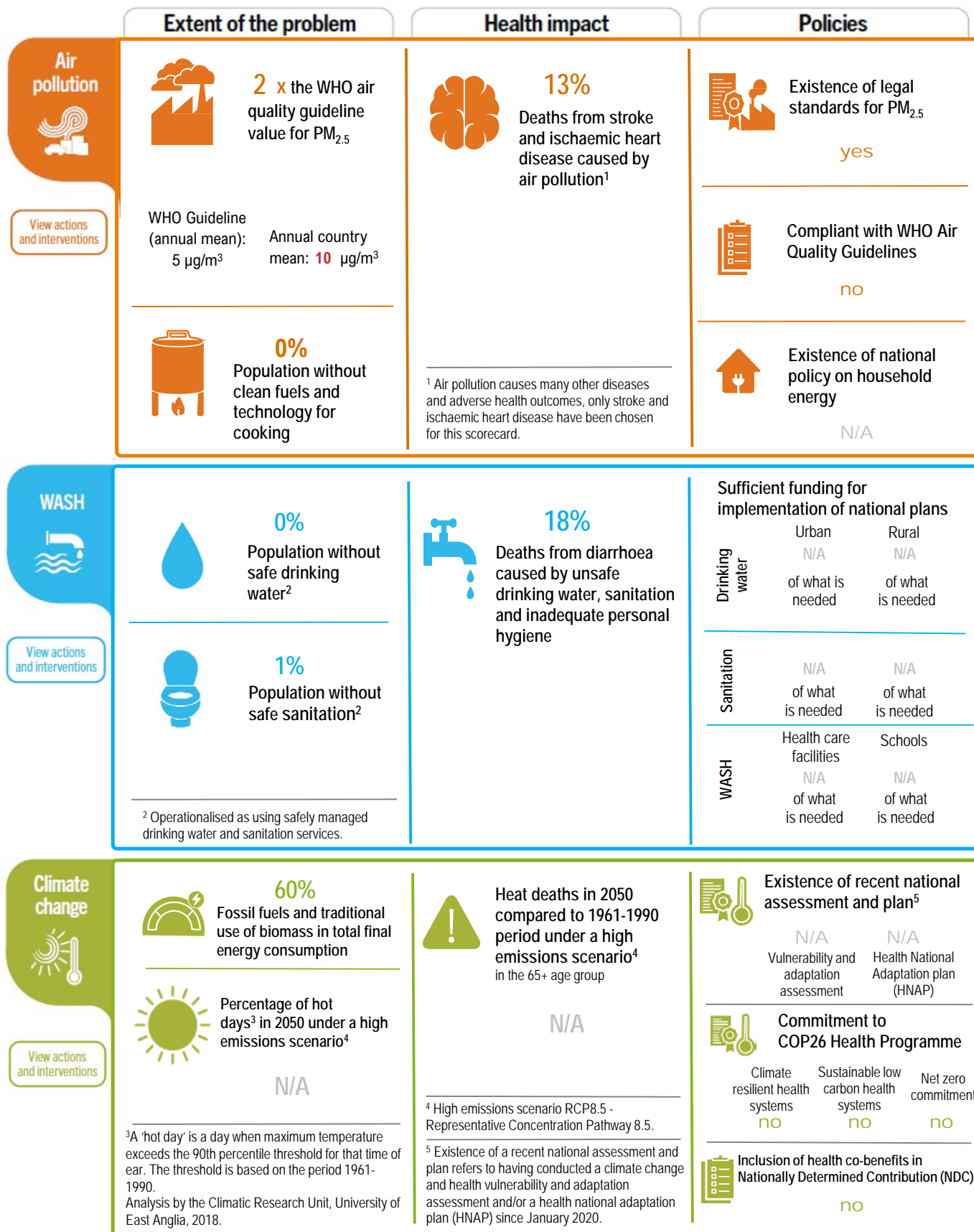
Summary score: 75

Exposure score: 78 Health score: 77 Policy score: 71

The scores represent simple averages.

[See methods and results for additional information.](#)

The scores are out of 100.



\* Data not undergone country consultation/ not UN data. N/A: not available.

# Denmark

	Extent of the problem	Health impact	Policies
<p><b>Biodiversity</b></p> <p><a href="#">View actions and interventions</a></p>	<p><b>Terrestrial and marine area protected</b></p> <p><b>18 %</b></p> <p>Global target: Conserve 30% of land, waters and seas by 2030.</p> <hr/> <p><b>Change in forest area 1990-2020</b></p> <p><b>18 %</b></p> <p>Change in forest area (%)</p> <p><b>970 km<sup>2</sup></b></p> <p>Change in forest area (km<sup>2</sup>)</p>	<p>INSUFFICIENT DATA</p>	<p><b>Post-COP15 National Biodiversity Strategy and Action Plan submitted</b></p> <p>yes</p>
<p><b>Chemicals</b></p> <p><a href="#">View actions and interventions</a></p>	<p><b>Mean blood lead level in children under 5 years*</b></p> <p><b>1 µg/dL</b></p> <hr/> <p><b>International Health Regulations (IHR) capacity score for chemical events<sup>6</sup></b></p> <p><b>100 %</b> (out of 100%)</p> <p><small>* Key informants report on attainment of a set of attributes for chemical events (core capacity 14) using a standard WHO instrument.</small></p>	<p><b>Poisoning deaths in 100,000 children under five, per year:</b></p> <p><b>&lt;1</b></p>	<p><b>Existence of legal limit on lead paint</b></p> <p>yes</p> <hr/> <p><b>Existence of a poison centre</b></p> <p>yes</p> <hr/> <p><b>Party to the Minamata Convention on Mercury</b></p> <p>yes</p>
<p><b>Radiation</b></p> <p><a href="#">View actions and interventions</a></p>	<p><b>International Health Regulations (IHR) capacity score for radiation emergencies<sup>7</sup></b></p> <p><b>100 %</b> (out of 100%)</p> <p><small><sup>7</sup> Key informants report on attainment of a set of attributes for radiation emergencies (core capacity 15) using a standard WHO instrument.</small></p>	<p><b>Deaths per 100,000 people from melanoma and other skin cancers, per year:</b></p> <p><b>8</b></p> <hr/> <p><b>Number of deaths per 100,000 people from residential radon, per year:*</b></p> <p><b>4</b></p>	<p><b>Existence of standards on electromagnetic fields</b></p> <p>N/A</p> <hr/> <p><b>Existence of regulation of artificial tanning devices/sun beds</b></p> <p>yes</p> <hr/> <p><b>Existence of national radon regulations for dwellings</b></p> <p>yes</p>

\* Data not undergone country consultation/ not UN data. N/A: not available.

# Denmark

	Extent of the problem	Health impact	Policies								
<p><b>Occupational health</b></p> <p><a href="#">View actions and interventions</a></p>	<p><b>Informal employment in total employment</b></p> <p>N/A</p> <hr/> <p><b>Working age population exposed to long working hours (≥55 hours/week)</b></p> <p>2%</p>	<p>Deaths per 100,000 people of working age from <b>diseases</b> due to occupational risks, per year</p> <p><b>38</b></p> <p>Regional values:</p> <p>9 41</p> <p>Min Max</p> <hr/> <p>Deaths per 100,000 people of working age from <b>injuries</b> due to occupational risks, per year</p> <p><b>1</b></p> <p>Regional values:</p> <p>0 7</p> <p>Min Max</p>	<p>Existence of national policy instruments for occupational health and safety for health workers</p> <p>no</p> <hr/> <p><b>2 of 3</b> key international labour conventions on occupational safety and health ratified</p> <table border="0"> <tr> <td>C155 Occupational safety and health</td> <td>C161 Occupational health services</td> <td>C187 Promotional framework</td> </tr> <tr> <td>yes</td> <td>no</td> <td>yes</td> </tr> </table>	C155 Occupational safety and health	C161 Occupational health services	C187 Promotional framework	yes	no	yes		
C155 Occupational safety and health	C161 Occupational health services	C187 Promotional framework									
yes	no	yes									
<p><b>Health care facilities</b></p> <p><a href="#">View actions and interventions</a></p>	<p><b>Health care facilities without basic services</b></p> <table border="0"> <tr> <td>Water N/A</td> <td>Sanitation N/A</td> </tr> <tr> <td>Hygiene N/A</td> <td>Waste management N/A</td> </tr> </table> <hr/> <p>N/A</p> <p><b>Health care facilities without reliable electricity supply</b></p> <p>N/A</p>	Water N/A	Sanitation N/A	Hygiene N/A	Waste management N/A	<p>INSUFFICIENT DATA</p>	<p>Climate assessment conducted for:</p> <table border="0"> <tr> <td>N/A</td> <td>N/A</td> </tr> <tr> <td>Climate resilience</td> <td>Environmental sustainability</td> </tr> </table> <hr/> <p>Existence of standards for WASH health care facilities</p> <p>N/A</p> <hr/> <p>Existence of standards for health care waste management</p> <p>N/A</p>	N/A	N/A	Climate resilience	Environmental sustainability
Water N/A	Sanitation N/A										
Hygiene N/A	Waste management N/A										
N/A	N/A										
Climate resilience	Environmental sustainability										

Please access the reading guide [here](#)

\* Data not undergone country consultation/ not UN data. N/A: not available.

## References

### Air pollution

- [WHO global air quality guidelines 2021](#)
- [WHO SDG Indicator 11.6.2, Concentrations of fine particulate matter \(PM2.5\): 2019 data](#)
- [WHO household air pollution data: 2022 data](#)
- [WHO Air pollution data portal: health impact data for 2019](#)
- [UNEP 2021: Regulating air quality: the first global assessment of air pollution legislation: 2020 data](#)
- [WHO Household energy policy repository: updated 2024.](#)

### Water, sanitation and hygiene

- [WHO, UNICEF: Joint Monitoring Programme for Water Supply, Sanitation and Hygiene: 2022 data](#)
- [WHO water, sanitation and hygiene: burden of disease, 2019 data](#)
- [WHO GLAAS 2021/2022 cycle](#)

### Climate change

- [IEA 2023: Share of modern renewables in total final energy consumption](#)
- [WHO Health and Climate Change Country Profiles](#)
- [Honda et al. 2014: projections for 2050](#)
- [Kendrovski et al. 2017: projections for 2050](#)
- [WHO Health and Climate Change Global Survey, 2021](#)
- [WHO: Alliance for Transformative Action on Climate and Health \(ATACH\): Country Commitments, 2024 update](#)
- [WHO 2023: 2023 WHO review of health in nationally determined contributions and long-term strategies: health at the heart of the Paris Agreement](#)
- [ATACH baselines, 2024 data](#)

### Biodiversity:

- [World Bank Group, Terrestrial and marine protected areas, 2022 data](#)
- [World Population Review 2024: Deforestation rates by country](#)
- [FAO 2020: Global Forest Resources Assessment, 2020 data](#)
- [CBD Online Reporting Tool 2024, updated 31 December 2024](#)

### Chemicals

- [IHME: Lead exposure estimates, 2023 data](#)
- [WHO: International Health Regulations core capacity scores, 2023 data](#)
- [WHO: Mortality rate attributed to unintentional poisonings: data for 2021](#)
- [WHO: Legally binding controls for lead paint, updated 2024](#)
- [WHO: World directory of poisons centres, updated 2024](#)
- [UNEP: Minamata Convention on Mercury, 2024 data.](#)

### Radiation

- [WHO: International Health Regulations core capacity scores, 2023 data](#)
- [WHO: Deaths from melanoma and other skin cancers, 2021 data](#)
- [IHME: Deaths from residential radon, 2021 data](#)
- [WHO: Electromagnetic fields, updated 2018](#)
- [WHO: Sunbeds: Existence of national regulations, updated 2021](#)
- [WHO: Existence of national radon regulations, 2019 data.](#)

### Occupational health

- [ILOSTAT: Statistics on the informal economy, updated 2024](#)
- [WHO: Disease burden from long working hours, 2016 data](#)
- [WHO/ILO: Joint estimates of the work-related burden of disease and injury, 2016 data](#)
- [Pega et al. 2023](#)
- [WHO: Occupational Burden of Disease Application](#)
- [WHO: Existence of national policy instruments for occupational health and safety for health workers, 2023 data](#)
- [ILO ratifications of: C155,161 and C187, updated 2024.](#)

### Health care facilities

- [WHO/UNICEF 2024: WASH in health care facilities 2023 data update: special focus on primary health care](#)
- [WHO: Database on electrification of health-care facilities, updated 2023](#)
- [WHO/UNICEF Country progress tracker, updated 2023.](#)

This scorecard is based on already published data (see references). It is a tool to measure and track the progress of Member States and is not intended for ranking. Update 2025.

\* Data not undergone country consultation/ not UN data. N/A: not available.