

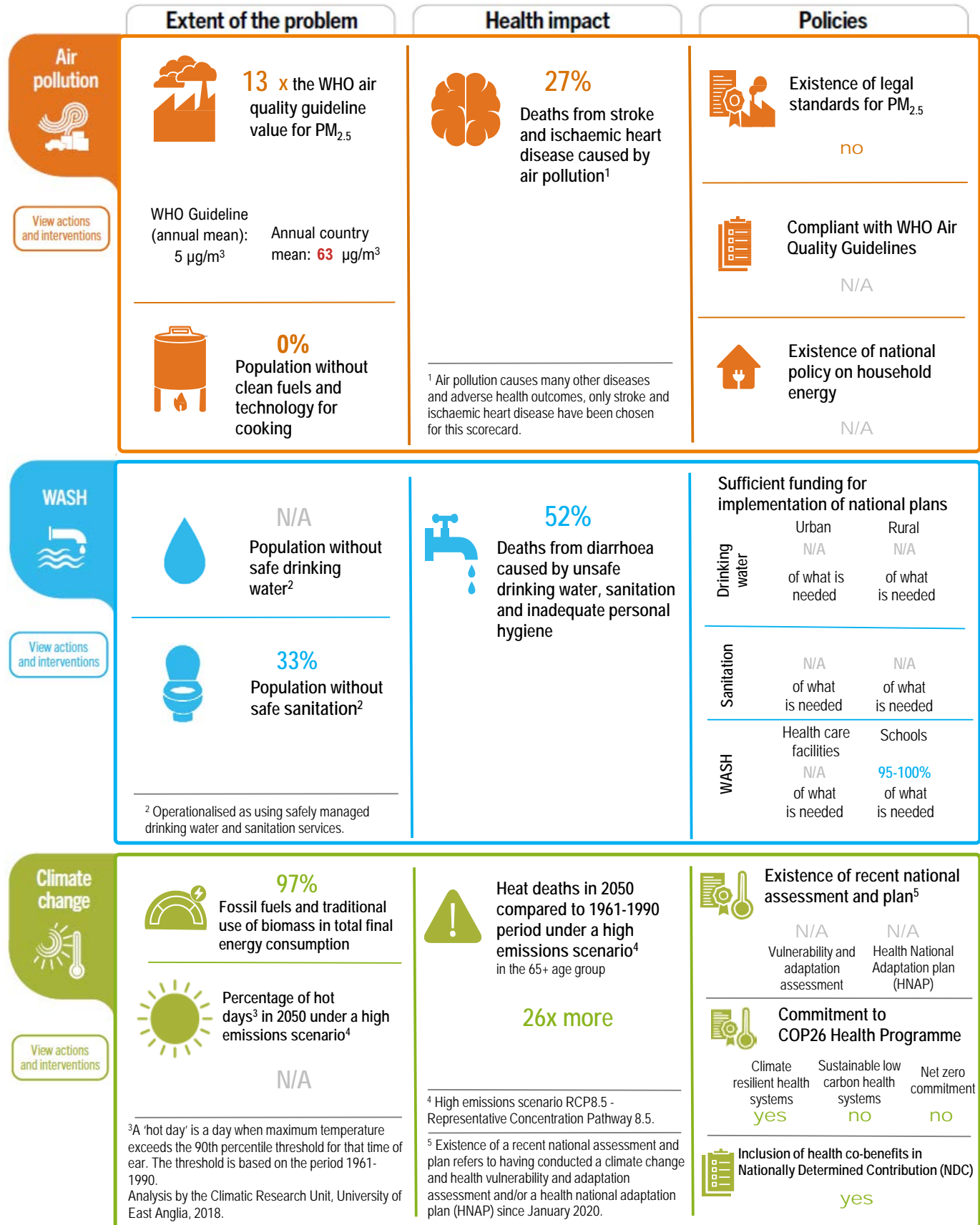
Summary score: **49**

Exposure score: 52    Health score: 72    Policy score: 23

The scores represent simple averages.

[See methods and results for additional information.](#)

The scores are out of 100.



\* Data not undergone country consultation/ not UN data. N/A: not available.

# Egypt

	Extent of the problem	Health impact	Policies
<p><b>Biodiversity</b></p> <p><a href="#">View actions and interventions</a></p>	<p>Terrestrial and marine area protected <b>12 %</b></p> <p>Global target: Conserve 30% of land, waters and seas by 2030.</p> <hr/> <p>Change in forest area 1990-2020 <b>2 %</b></p> <p>Change in forest area (%)</p> <p><b>10 km<sup>2</sup></b></p> <p>Change in forest area (km<sup>2</sup>)</p>	<p>INSUFFICIENT DATA</p>	<p>Post-COP15 National Biodiversity Strategy and Action Plan submitted <b>no</b></p>
<p><b>Chemicals</b></p> <p><a href="#">View actions and interventions</a></p>	<p>Mean blood lead level in children under 5 years* <b>8 µg/dL</b></p> <hr/> <p>International Health Regulations (IHR) capacity score for chemical events<sup>6</sup> <b>100 %</b> (out of 100%)</p> <p><small>* Key informants report on attainment of a set of attributes for chemical events (core capacity 14) using a standard WHO instrument.</small></p>	<p>Poisoning deaths in 100,000 children under five, per year: <b>&lt;1</b></p>	<p>Existence of legal limit on lead paint <b>yes</b></p> <hr/> <p>Existence of a poison centre <b>yes</b></p> <hr/> <p>Party to the Minamata Convention on Mercury <b>no</b></p>
<p><b>Radiation</b></p> <p><a href="#">View actions and interventions</a></p>	<p>International Health Regulations (IHR) capacity score for radiation emergencies<sup>7</sup> <b>80 %</b> (out of 100%)</p> <p><small><sup>7</sup> Key informants report on attainment of a set of attributes for radiation emergencies (core capacity 15) using a standard WHO instrument.</small></p>	<p>Deaths per 100,000 people from melanoma and other skin cancers, per year: <b>1</b></p> <hr/> <p>Number of deaths per 100,000 people from residential radon, per year:* <b>&lt;1</b></p>	<p>Existence of standards on electromagnetic fields <b>N/A</b></p> <hr/> <p>Existence of regulation of artificial tanning devices/sun beds <b>no</b></p> <hr/> <p>Existence of national radon regulations for dwellings <b>N/A</b></p>

\* Data not undergone country consultation/ not UN data. N/A: not available.



## References

### Air pollution

- [WHO global air quality guidelines 2021](#)
- [WHO SDG Indicator 11.6.2, Concentrations of fine particulate matter \(PM2.5\): 2019 data](#)
- [WHO household air pollution data: 2022 data](#)
- [WHO Air pollution data portal: health impact data for 2019](#)
- [UNEP 2021: Regulating air quality: the first global assessment of air pollution legislation: 2020 data](#)
- [WHO Household energy policy repository: updated 2024.](#)

### Water, sanitation and hygiene

- [WHO, UNICEF: Joint Monitoring Programme for Water Supply, Sanitation and Hygiene: 2022 data](#)
- [WHO water, sanitation and hygiene: burden of disease, 2019 data](#)
- [WHO GLAAS 2021/2022 cycle](#)

### Climate change

- [IEA 2023: Share of modern renewables in total final energy consumption](#)
- [WHO Health and Climate Change Country Profiles](#)
- [Honda et al. 2014: projections for 2050](#)
- [Kendrovski et al. 2017: projections for 2050](#)
- [WHO Health and Climate Change Global Survey, 2021](#)
- [WHO: Alliance for Transformative Action on Climate and Health \(ATACH\): Country Commitments, 2024 update](#)
- [WHO 2023: 2023 WHO review of health in nationally determined contributions and long-term strategies: health at the heart of the Paris Agreement](#)
- [ATACH baselines, 2024 data](#)

### Biodiversity:

- [World Bank Group, Terrestrial and marine protected areas, 2022 data](#)
- [World Population Review 2024: Deforestation rates by country](#)
- [FAO 2020: Global Forest Resources Assessment, 2020 data](#)
- [CBD Online Reporting Tool 2024, updated 31 December 2024](#)

### Chemicals

- [IHME: Lead exposure estimates, 2023 data](#)
- [WHO: International Health Regulations core capacity scores, 2023 data](#)
- [WHO: Mortality rate attributed to unintentional poisonings: data for 2021](#)
- [WHO: Legally binding controls for lead paint, updated 2024](#)
- [WHO: World directory of poisons centres, updated 2024](#)
- [UNEP: Minamata Convention on Mercury, 2024 data.](#)

### Radiation

- [WHO: International Health Regulations core capacity scores, 2023 data](#)
- [WHO: Deaths from melanoma and other skin cancers, 2021 data](#)
- [IHME: Deaths from residential radon, 2021 data](#)
- [WHO: Electromagnetic fields, updated 2018](#)
- [WHO: Sunbeds: Existence of national regulations, updated 2021](#)
- [WHO: Existence of national radon regulations, 2019 data.](#)

### Occupational health

- [ILOSTAT: Statistics on the informal economy, updated 2024](#)
- [WHO: Disease burden from long working hours, 2016 data](#)
- [WHO/ILO: Joint estimates of the work-related burden of disease and injury, 2016 data](#)
- [Pega et al. 2023](#)
- [WHO: Occupational Burden of Disease Application](#)
- [WHO: Existence of national policy instruments for occupational health and safety for health workers, 2023 data](#)
- [ILO ratifications of: C155,161 and C187, updated 2024.](#)

### Health care facilities

- [WHO/UNICEF 2024: WASH in health care facilities 2023 data update: special focus on primary health care](#)
- [WHO: Database on electrification of health-care facilities, updated 2023](#)
- [WHO/UNICEF Country progress tracker, updated 2023.](#)

This scorecard is based on already published data (see references). It is a tool to measure and track the progress of Member States and is not intended for ranking. Update 2025.

\* Data not undergone country consultation/ not UN data. N/A: not available.