

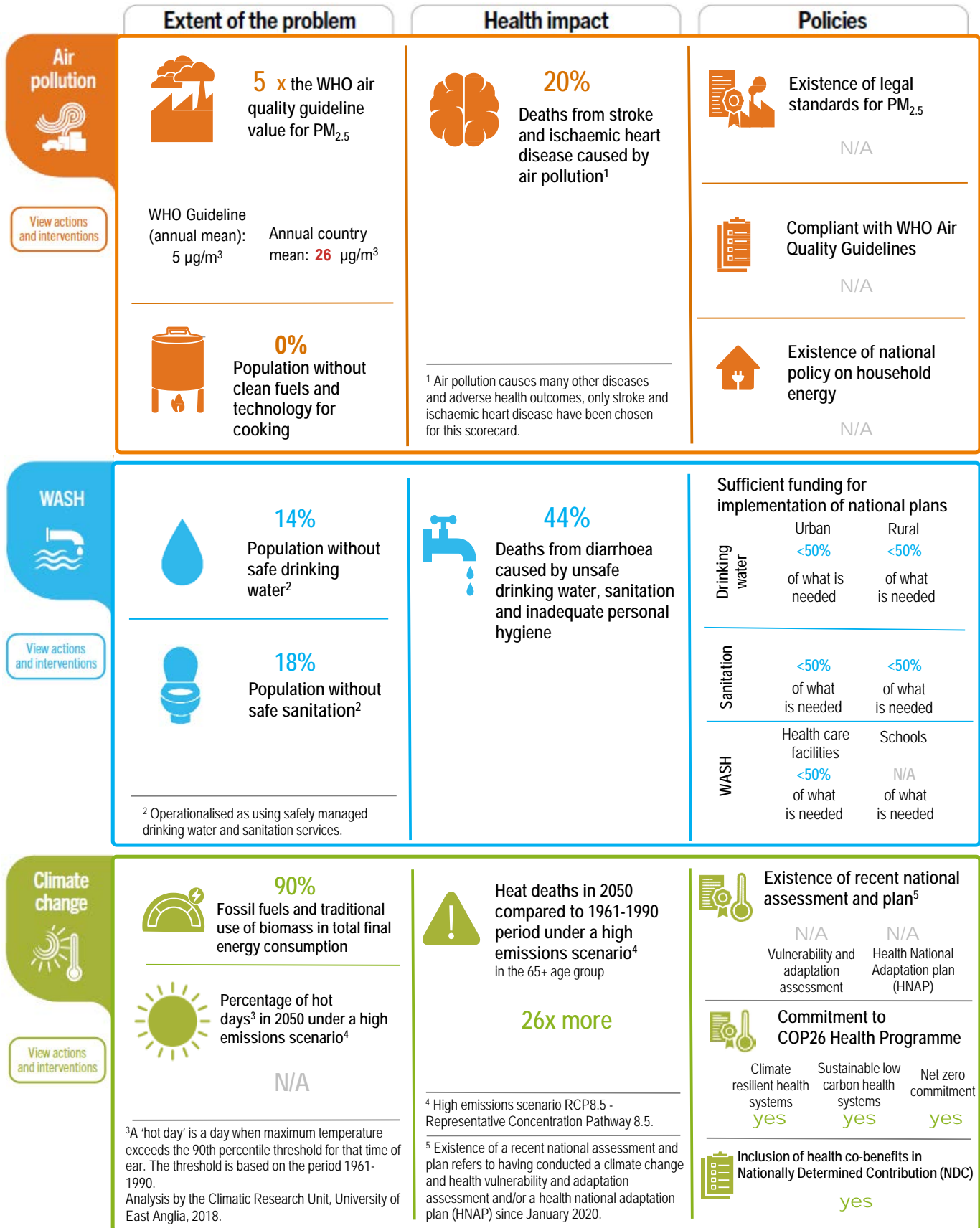
Summary score: **69**

Exposure score: 57 Health score: 77 Policy score: 73

The scores represent simple averages.

[See methods and results for additional information.](#)

The scores are out of 100.



* Data not undergone country consultation/ not UN data. N/A: not available.

Jordan

	Extent of the problem	Health impact	Policies
Biodiversity View actions and interventions	<p>Terrestrial and marine area protected</p> <p style="font-size: 24px; font-weight: bold; color: #28a745;">4 %</p> <p>Global target: Conserve 30% of land, waters and seas by 2030.</p> <hr/> <p>Change in forest area 1990-2020</p> <p> N/A Change in forest area (%)</p> <p> N/A Change in forest area (km²)</p>	<p>INSUFFICIENT DATA</p>	<p> Post-COP15 National Biodiversity Strategy and Action Plan submitted</p> <p style="text-align: center; color: #28a745; font-weight: bold;">yes</p>
Chemicals View actions and interventions	<p>Mean blood lead level in children under 5 years*</p> <p style="font-size: 24px; font-weight: bold; color: #6f42c1;">2 µg/dL</p> <hr/> <p>International Health Regulations (IHR) capacity score for chemical events⁶</p> <p style="font-size: 24px; font-weight: bold; color: #6f42c1;">60 %</p> <p style="text-align: center; font-size: 14px;">(out of 100%)</p> <hr/> <p><small>* Key informants report on attainment of a set of attributes for chemical events (core capacity 14) using a standard WHO instrument.</small></p>	<p>Poisoning deaths in 100,000 children under five, per year:</p> <p style="font-size: 24px; font-weight: bold; color: #6f42c1;">1</p> <p style="text-align: center; font-size: 14px;">Regional values:</p> <p style="display: flex; justify-content: space-between; width: 100%;"> 0 Min 6 Max </p>	<p> Existence of legal limit on lead paint</p> <p style="text-align: center; color: #6f42c1;">yes</p> <hr/> <p> Existence of a poison centre</p> <p style="text-align: center; color: #6f42c1;">yes</p> <hr/> <p> Party to the Minamata Convention on Mercury</p> <p style="text-align: center; color: #6f42c1;">yes</p>
Radiation View actions and interventions	<p>International Health Regulations (IHR) capacity score for radiation emergencies⁷</p> <p style="font-size: 24px; font-weight: bold; color: #dc3545;">80 %</p> <p style="text-align: center; font-size: 14px;">(out of 100%)</p> <hr/> <p><small>⁷ Key informants report on attainment of a set of attributes for radiation emergencies (core capacity 15) using a standard WHO instrument.</small></p>	<p>Deaths per 100,000 people from melanoma and other skin cancers, per year:</p> <p style="font-size: 24px; font-weight: bold; color: #dc3545;">1</p> <hr/> <p>Number of deaths per 100,000 people from residential radon, per year:*</p> <p style="font-size: 24px; font-weight: bold; color: #dc3545;"><1</p>	<p> Existence of standards on electromagnetic fields</p> <p style="text-align: center; color: #dc3545;">N/A</p> <hr/> <p> Existence of regulation of artificial tanning devices/sun beds</p> <p style="text-align: center; color: #dc3545;">N/A</p> <hr/> <p> Existence of national radon regulations for dwellings</p> <p style="text-align: center; color: #dc3545;">N/A</p>

* Data not undergone country consultation/ not UN data. N/A: not available.

Jordan

	Extent of the problem	Health impact	Policies								
<p>Occupational health</p> <p>View actions and interventions</p>	<p>Informal employment in total employment</p> <p>53%</p> <hr/> <p>Working age population exposed to long working hours (≥55 hours/week)</p> <p>10%</p>	<p>Deaths per 100,000 people of working age from diseases due to occupational risks, per year</p> <p>14</p> <p>Regional values:</p> <p>4 (Min) 29 (Max)</p> <hr/> <p>Deaths per 100,000 people of working age from injuries due to occupational risks, per year</p> <p>5</p> <p>Regional values:</p> <p>2 (Min) 18 (Max)</p>	<p>Existence of national policy instruments for occupational health and safety for health workers</p> <p>N/A</p> <hr/> <p>0 of 3 key international labour conventions on occupational safety and health ratified</p> <table border="0"> <tr> <td>C155 Occupational safety and health</td> <td>C161 Occupational health services</td> <td>C187 Promotional framework</td> </tr> <tr> <td>no</td> <td>no</td> <td>no</td> </tr> </table>	C155 Occupational safety and health	C161 Occupational health services	C187 Promotional framework	no	no	no		
C155 Occupational safety and health	C161 Occupational health services	C187 Promotional framework									
no	no	no									
<p>Health care facilities</p> <p>View actions and interventions</p>	<p>Health care facilities without basic services</p> <table border="0"> <tr> <td>Water 31%</td> <td>Sanitation 78%</td> </tr> <tr> <td>Hygiene 41%</td> <td>Waste management 78%</td> </tr> </table> <hr/> <p>N/A</p> <p>Health care facilities without reliable electricity supply</p>	Water 31%	Sanitation 78%	Hygiene 41%	Waste management 78%	<p>INSUFFICIENT DATA</p>	<p>Climate assessment conducted for:</p> <table border="0"> <tr> <td>no</td> <td>no</td> </tr> <tr> <td>Climate resilience</td> <td>Environmental sustainability</td> </tr> </table> <hr/> <p>Existence of standards for WASH health care facilities</p> <p>yes</p> <hr/> <p>Existence of standards for health care waste management</p> <p>yes</p>	no	no	Climate resilience	Environmental sustainability
Water 31%	Sanitation 78%										
Hygiene 41%	Waste management 78%										
no	no										
Climate resilience	Environmental sustainability										

Please access the reading guide [here](#)

* Data not undergone country consultation/ not UN data. N/A: not available.

© World Health Organization 2025. Some rights reserved. This work is available under the CC BY-NC-SA 3.0 IGO license.

References

Air pollution

- [WHO global air quality guidelines 2021](#)
- [WHO SDG Indicator 11.6.2, Concentrations of fine particulate matter \(PM2.5\): 2019 data](#)
- [WHO household air pollution data: 2022 data](#)
- [WHO Air pollution data portal: health impact data for 2019](#)
- [UNEP 2021: Regulating air quality: the first global assessment of air pollution legislation: 2020 data](#)
- [WHO Household energy policy repository: updated 2024.](#)

Water, sanitation and hygiene

- [WHO, UNICEF: Joint Monitoring Programme for Water Supply, Sanitation and Hygiene: 2022 data](#)
- [WHO water, sanitation and hygiene: burden of disease, 2019 data](#)
- [WHO GLAAS 2021/2022 cycle](#)

Climate change

- [IEA 2023: Share of modern renewables in total final energy consumption](#)
- [WHO Health and Climate Change Country Profiles](#)
- [Honda et al. 2014: projections for 2050](#)
- [Kendrovski et al. 2017: projections for 2050](#)
- [WHO Health and Climate Change Global Survey, 2021](#)
- [WHO: Alliance for Transformative Action on Climate and Health \(ATACH\): Country Commitments, 2024 update](#)
- [WHO 2023: 2023 WHO review of health in nationally determined contributions and long-term strategies: health at the heart of the Paris Agreement](#)
- [ATACH baselines, 2024 data](#)

Biodiversity:

- [World Bank Group, Terrestrial and marine protected areas, 2022 data](#)
- [World Population Review 2024: Deforestation rates by country](#)
- [FAO 2020: Global Forest Resources Assessment, 2020 data](#)
- [CBD Online Reporting Tool 2024, updated 31 December 2024](#)

Chemicals

- [IHME: Lead exposure estimates, 2023 data](#)
- [WHO: International Health Regulations core capacity scores, 2023 data](#)
- [WHO: Mortality rate attributed to unintentional poisonings: data for 2021](#)
- [WHO: Legally binding controls for lead paint, updated 2024](#)
- [WHO: World directory of poisons centres, updated 2024](#)
- [UNEP: Minamata Convention on Mercury, 2024 data.](#)

Radiation

- [WHO: International Health Regulations core capacity scores, 2023 data](#)
- [WHO: Deaths from melanoma and other skin cancers, 2021 data](#)
- [IHME: Deaths from residential radon, 2021 data](#)
- [WHO: Electromagnetic fields, updated 2018](#)
- [WHO: Sunbeds: Existence of national regulations, updated 2021](#)
- [WHO: Existence of national radon regulations, 2019 data.](#)

Occupational health

- [ILOSTAT: Statistics on the informal economy, updated 2024](#)
- [WHO: Disease burden from long working hours, 2016 data](#)
- [WHO/ILO: Joint estimates of the work-related burden of disease and injury, 2016 data](#)
- [Pega et al. 2023](#)
- [WHO: Occupational Burden of Disease Application](#)
- [WHO: Existence of national policy instruments for occupational health and safety for health workers, 2023 data](#)
- [ILO ratifications of: C155,161 and C187, updated 2024.](#)

Health care facilities

- [WHO/UNICEF 2024: WASH in health care facilities 2023 data update: special focus on primary health care](#)
- [WHO: Database on electrification of health-care facilities, updated 2023](#)
- [WHO/UNICEF Country progress tracker, updated 2023.](#)

This scorecard is based on already published data (see references). It is a tool to measure and track the progress of Member States and is not intended for ranking. Update 2025.

* Data not undergone country consultation/ not UN data. N/A: not available.