

# Comoros

## Hypertension profile

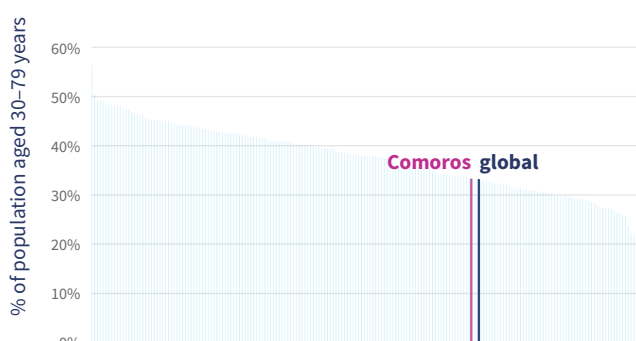
Total population (2019): 791 000

Total deaths (2019): 5030!

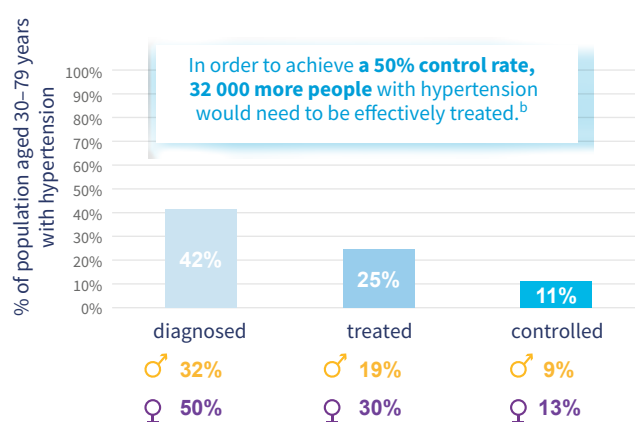
Age-standardized prevalence of hypertension among adults aged 30–79 years (2019)<sup>a</sup>

♀ 33% ♂ 30% ♀ 36%

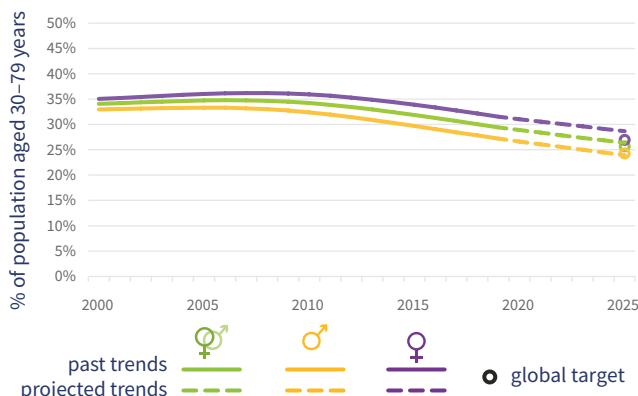
### Prevalence of hypertension – global comparison (both sexes)<sup>a</sup>



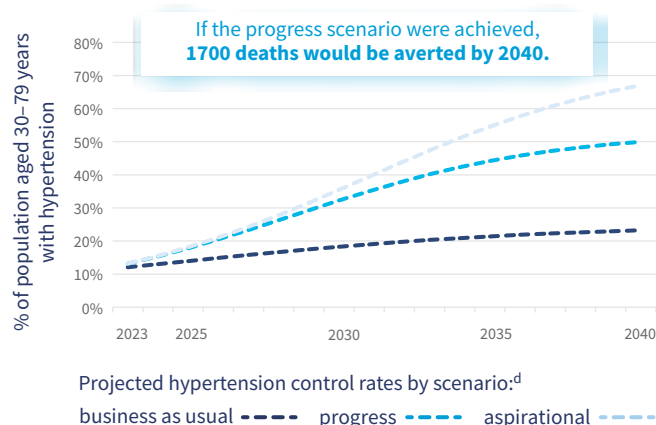
Of the 82 000 adults aged 30–79 years with hypertension:



### Trends in uncontrolled hypertension in adults aged 30–79 years<sup>c</sup>



### Hypertension control rate scenarios



## Mortality

	both sexes	males	females	year
Probability of premature mortality from NCDs (%)	21	21	21	2019
Cardiovascular disease deaths	910	430	480	2019
Cardiovascular disease deaths attributable to high systolic blood pressure (%)	58	56	60	2019

## Risk factors<sup>e</sup>

	both sexes	males	females	year
Mean population salt intake, adults aged 25+ years (g/day)	7	7	8	2019
Current tobacco use, adults aged 15+ years (%)	21	30	12	2019
Obesity, adults aged 18+ years (%)	8	3	12	2016
Total alcohol per capita consumption, adults aged 15+ years (litres)	0	0	0	2019
Physical inactivity, adults aged 18+ years (%)	14	10	19	2016

## National response

### Targets

National target for blood pressure  
National target for salt consumption

### Surveillance

Conducted recent, national survey measuring raised blood pressure/hypertension  
Conducted recent, national survey on salt/sodium intake  
Functioning system for generating reliable cause-specific mortality data on a routine basis

### Treatment

Guidelines for management of hypertension

Footnotes: a. SBP  $\geq 140$  mmHg or DBP  $\geq 90$  mmHg or taking medication for hypertension. b. Control rate: adults aged 30–79 years receiving treatment, with blood pressure SBP  $< 140$  mmHg and DBP  $< 90$  mmHg. c. SBP  $\geq 140$  mmHg or DBP  $\geq 90$  mmHg. d. Progress and aspirational scenarios reflect a theoretical scaling up of treatment and control. e. Age-standardized estimates are presented for all indicators except salt intake.

See Explanatory notes for description of indicators