

MOROCCO



Population: 31 951 412
 Income group: Middle
 Gross national income per capita: US\$ 2 850

INSTITUTIONAL FRAMEWORK

Lead agency	Interministerial Committee of Road Safety
Funded in national budget	No
National road safety strategy	Yes
Funding to implement strategy	Partially funded
Fatality reduction targets set	No
Fatality reduction target	No

SAFER ROADS AND MOBILITY

Formal audits required for new road construction	No
Regular inspections of existing road infrastructure	Yes
Policies to promote walking or cycling	No
Policies to encourage investment in public transport	Yes
Policies to separate road users to protect VRUs	Yes

SAFER VEHICLES

Total registered vehicles (2010)	2 791 004
Cars and 4-wheeled light vehicles	1 976 172
Motorized 2- and 3-wheelers	31 353
Heavy trucks	654 434
Buses	53 363
Other	75 682
Vehicle standards applied	
UN World forum on harmonization of vehicles standards	Yes
New car assessment programme	Yes
Vehicle regulations	
Front and rear seat-belts required in all new cars	Yes
Front and rear seat-belts required all imported cars	Yes

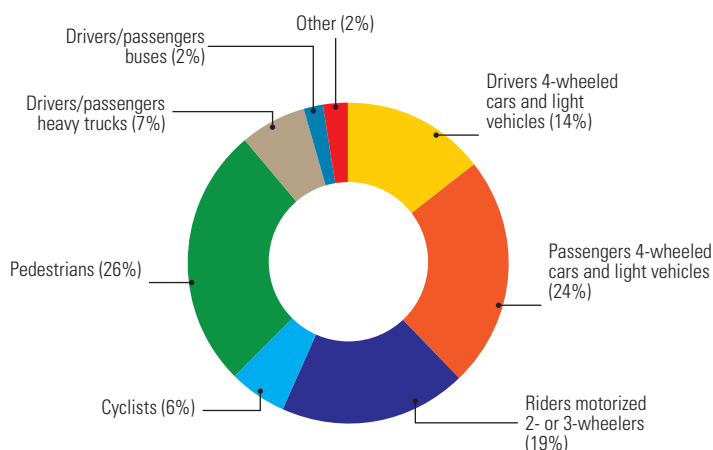
DATA

Reported road traffic fatalities (2010)	3 778 ^a , 80%M, 17%F
Estimated GDP lost due to road traffic crashes	2% ^b

^a Police records. Defined as died within 30 days of crash.

^b 2007, Road Safety in Morocco: Strategy and Plan of Action, UNECA 2009.

DEATHS BY ROAD USER CATEGORY



Source: 2010, Road Directorate, Ministry of Equipment and Transport.

SAFER ROAD USERS

Penalty/demerit point system in place	Yes
National speed limits	Yes
Local authorities can set lower limits	Yes
Maximum limit urban roads	60 km/h
Enforcement	0 1 2 3 4 5 6 7 8 9 10
National drink-driving law	Yes ^c
BAC limit – general population	0.02 g/dl
BAC limit – young or novice drivers	0.02 g/dl
BAC limit – professional/commercial drivers	0.02 g/dl
Random breath testing and/or police checkpoints	Yes
Enforcement	0 1 2 3 4 5 6 7 8 9 10
% road traffic deaths involving alcohol	—
National motorcycle helmet law	Yes
Applies to drivers and passengers	Yes
Helmet standard mandated	Yes
Enforcement	0 1 2 3 4 5 6 7 8 9 10
Helmet wearing rate	79% Drivers ^d 24% Passengers ^d
National seat-belt law	Yes
Applies to front and rear seat occupants	Yes
Enforcement	0 1 2 3 4 5 6 7 8 9 10
Seat-belt wearing rate	51% Drivers ^d 52% Front seats ^d
National child restraint law	No
Enforcement	—
National law on mobile phones while driving	Yes
Law prohibits hand-held mobile phone use	Yes
Law also applies to hands-free mobile phones	No

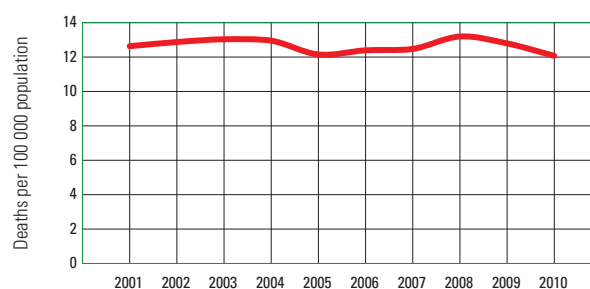
^c Alcohol consumption legally prohibited.

^d 2009, National Committee for Prevention of Traffic Accidents.

POST-CRASH CARE

Vital registration system	No
Emergency Room based injury surveillance system	No
Emergency access telephone number(s)	115
Seriously injured transported by ambulance	≥75%
Permanently disabled due to road traffic crash	—
Emergency medicine training for doctors	Yes
Emergency medicine training for nurses	No

TRENDS IN ROAD TRAFFIC DEATHS



Source: High Commission of Planning, and the Road Directorate, Ministry of Equipment and Transport.

Further data on each country can be found in the statistical annex.

Source: Global status report on road safety: supporting a decade of action, World Health Organization, 2013.