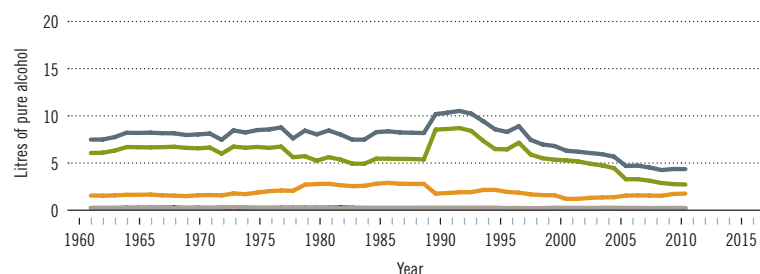


Burundi

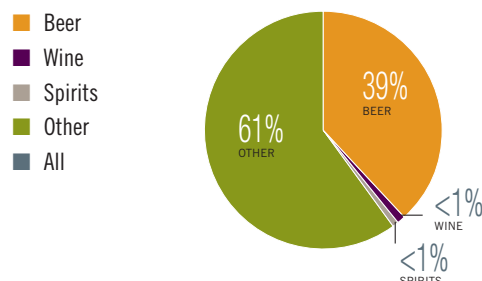
Total population (2016): 11 552 561 ► Population aged 15 years and older (15+): 55% ► Population in urban areas: 11% ► Income group (World Bank): Low income

ALCOHOL CONSUMPTION: LEVELS AND PATTERNS

Recorded alcohol per capita (15+) consumption, 1961–2016



Recorded alcohol per capita (15+) consumption (in litres of pure alcohol) by type of alcoholic beverage, 2016 or latest year available



Alcohol per capita (15+) consumption (in litres of pure alcohol)

	2010*		2016*	
Recorded	4.1		4.1	
Unrecorded	3.0		3.4	
Total**	7.1		7.5	
Total males / females	12.3	2.2	13.0	2.2
WHO African Region	6.3		6.3	

* Three-year averages of recorded and unrecorded for 2009–2011 and 2015–2017; **adjusted for tourist consumption.

Total alcohol per capita (15+) consumption, drinkers only (in litres of pure alcohol), 2016

	Litres
Males (15+)	29.7
Females (15+)	11.1
Both sexes (15+)	23.7

Prevalence of heavy episodic drinking* (%), 2016

	Population (15+ years)	Drinkers only (15+ years)	Population (15–19 years)	Drinkers only (15–19 years)
Males	28.0	64.2	18.9	67.3
Females	5.7	28.6	3.3	30.6
Both sexes	16.6	52.6	11.0	56.8

* Consumed at least 60 grams or more of pure alcohol on at least one occasion in the past 30 days.

Abstainers (%), 2016

	Males	Females	Both sexes
Lifetime abstainers (15+)	37.8	67.4	52.9
Former drinkers* (15+)	18.6	12.6	15.5
Abstainers (15+), past 12 months	56.3	80.0	68.4

* Persons who used to drink alcoholic beverages but have not done so in the past 12 months.

HEALTH CONSEQUENCES: MORTALITY AND MORBIDITY

Age-standardized death rates (ASDR) and alcohol-attributable fractions (AAF), 2016

	ASDR*		AAF (%)		AAD** (Number)
Liver cirrhosis, males / females	50.6	31.8	66.7	40.3	898
Road traffic injuries, males / females	79.1	24.2	31.4	24.8	1 092
Cancer, males / females	189.1	195.9	8.6	1.9	322

* Per 100 000 population (15+); **alcohol-attributable deaths, both sexes.

Years of life lost (YLL) score*, 2016

LEAST < 1 2 3 4 **5** > MOST

* Based on alcohol-attributable years of life lost.

Prevalence of alcohol use disorders and alcohol dependence (%), 2016*

	Alcohol use disorders**	Alcohol dependence
Males	11.6	3.9
Females	2.3	0.9
Both sexes	6.8	2.4
WHO African Region	3.7	1.3

* 12-month prevalence estimates (15+); **including alcohol dependence and harmful use of alcohol.

POLICIES AND INTERVENTIONS

Written national policy (adopted/revised) / National action plan	No / —
Excise tax on beer / wine / spirits	Yes / Yes / Yes
National legal minimum age for off-premise sales of alcoholic beverages (beer / wine / spirits)	18 / 18 / 18
National legal minimum age for on-premise sales of alcoholic beverages (beer / wine / spirits)	18 / 18 / 18
Restrictions on on-/off-premise sales of alcoholic beverages (any): Hours, days / places, density Specific events / intoxicated persons / petrol stations	Yes, No / Yes, No No / No / No

National maximum legal blood alcohol concentration (BAC) when driving a vehicle (general / young / professional), in %	No / No / No
Legally binding regulations on alcohol advertising / product placement (any)	No / No
Legally binding regulations on alcohol sponsorship / sales promotion (any)	No / No
Legally required health warning labels on alcohol advertisements / containers (any)	Yes / Yes
National government support for community action (any)	Yes
National monitoring system(s) (any)	No