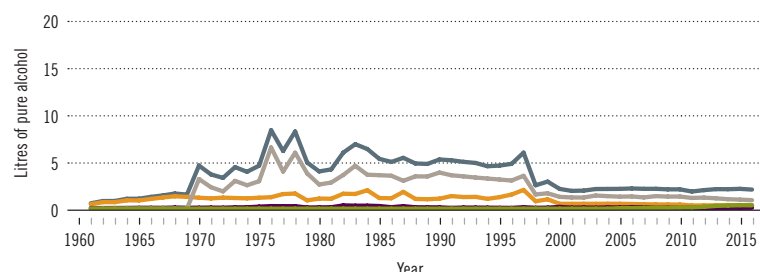


Bahrain

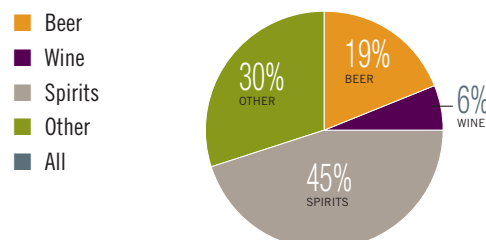
Total population (2016): 1 396 829 ► Population aged 15 years and older (15+): 79% ► Population in urban areas: 91% ► Income group (World Bank): High income

ALCOHOL CONSUMPTION: LEVELS AND PATTERNS

Recorded alcohol per capita (15+) consumption, 1961–2016



Recorded alcohol per capita (15+) consumption (in litres of pure alcohol) by type of alcoholic beverage, 2016 or latest year available



Alcohol per capita (15+) consumption (in litres of pure alcohol)

	2010*		2016*	
Recorded	2.0		2.1	
Unrecorded	0.1		0.1	
Total**	1.9		1.9	
Total males / females	2.7	0.3	2.8	0.3
WHO Eastern Mediterranean Region	0.6		0.6	

* Three-year averages of recorded and unrecorded for 2009–2011 and 2015–2017; **adjusted for tourist consumption.

Total alcohol per capita (15+) consumption, drinkers only (in litres of pure alcohol), 2016

	Litres
Males (15+)	24.5
Females (15+)	8.7
Both sexes (15+)	22.1

Prevalence of heavy episodic drinking* (%), 2016

	Population (15+ years)	Drinkers only (15+ years)	Population (15–19 years)	Drinkers only (15–19 years)
Males	3.8	33.0	1.9	35.4
Females	0.4	9.4	0.2	10.5
Both sexes	2.6	29.5	1.1	30.3

* Consumed at least 60 grams or more of pure alcohol on at least one occasion in the past 30 days.

Abstainers (%), 2016

	Males	Females	Both sexes
Lifetime abstainers (15+)	79.6	93.4	84.4
Former drinkers* (15+)	9.0	2.8	6.8
Abstainers (15+), past 12 months	88.5	96.2	91.2

* Persons who used to drink alcoholic beverages but have not done so in the past 12 months.

HEALTH CONSEQUENCES: MORTALITY AND MORBIDITY

Age-standardized death rates (ASDR) and alcohol-attributable fractions (AAF), 2016

	ASDR*		AAF (%)		AAF** (Number)
Liver cirrhosis, males / females	15.0	9.1	31.8	11.8	14
Road traffic injuries, males / females	14.3	4.6	7.2	3.8	7
Cancer, males / females	100.9	89.9	2.1	0.5	6

* Per 100 000 population (15+); **alcohol-attributable deaths, both sexes.

Years of life lost (YLL) score*, 2016

LEAST < 1 2 3 4 5 > MOST

* Based on alcohol-attributable years of life lost.

Prevalence of alcohol use disorders and alcohol dependence (%), 2016*

	Alcohol use disorders**	Alcohol dependence
Males	2.3	0.4
Females	0.3	0.1
Both sexes	1.6	0.3
WHO Eastern Mediterranean Region	0.8	0.4

* 12-month prevalence estimates (15+); **including alcohol dependence and harmful use of alcohol.

POLICIES AND INTERVENTIONS

Written national policy (adopted/revised) / National action plan	— / —
Excise tax on beer / wine / spirits	— / — / —
National legal minimum age for off-premise sales of alcoholic beverages (beer / wine / spirits)	— / — / —
National legal minimum age for on-premise sales of alcoholic beverages (beer / wine / spirits)	— / — / —
Restrictions on on-/off-premise sales of alcoholic beverages (any):	
Hours, days / places, density	— / —
Specific events / intoxicated persons / petrol stations	— / — / —

National maximum legal blood alcohol concentration (BAC) when driving a vehicle (general / young / professional), in %	— / — / —
Legally binding regulations on alcohol advertising / product placement (any)	— / —
Legally binding regulations on alcohol sponsorship / sales promotion (any)	— / —
Legally required health warning labels on alcohol advertisements / containers (any)	— / —
National government support for community action (any)	—
National monitoring system(s) (any)	—