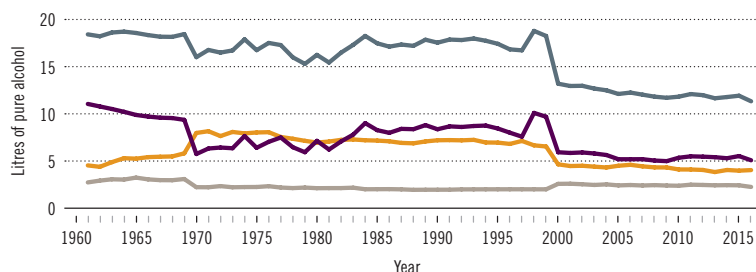


Luxembourg

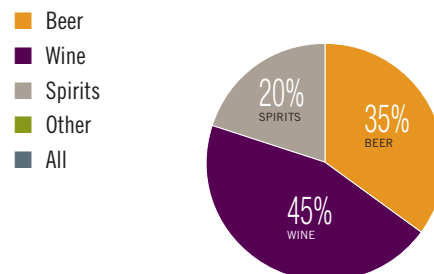
Total population (2016): 576 243 ▶ Population aged 15 years and older (15+): 84% ▶ Population in urban areas: 92% ▶ Income group (World Bank): High income

ALCOHOL CONSUMPTION: LEVELS AND PATTERNS

Recorded alcohol per capita (15+) consumption, 1961–2016



Recorded alcohol per capita (15+) consumption (in litres of pure alcohol) by type of alcoholic beverage, 2016 or latest year available



Alcohol per capita (15+) consumption (in litres of pure alcohol)

	2010*		2016*	
Recorded	12.0		11.5	
Unrecorded	0.6		1.4	
Total**	12.6		13.0	
Total males / females	19.2	6.2	19.7	6.3
WHO European Region	11.2		9.8	

* Three-year averages of recorded and unrecorded for 2009–2011 and 2015–2017; **adjusted for tourist consumption.

Total alcohol per capita (15+) consumption, drinkers only (in litres of pure alcohol), 2016

	Litres
Males (15+)	20.5
Females (15+)	7.2
Both sexes (15+)	14.1

Prevalence of heavy episodic drinking* (%), 2016

	Population (15+ years)	Drinkers only (15+ years)	Population (15–19 years)	Drinkers only (15–19 years)
Males	66.6	69.5	72.4	78.1
Females	30.1	34.3	34.6	43.4
Both sexes	48.4	52.7	54.0	62.5

* Consumed at least 60 grams or more of pure alcohol on at least one occasion in the past 30 days.

Abstainers (%), 2016

	Males	Females	Both sexes
Lifetime abstainers (15+)	1.6	5.3	3.4
Former drinkers* (15+)	2.6	7.0	4.8
Abstainers (15+), past 12 months	4.2	12.3	8.2

* Persons who used to drink alcoholic beverages but have not done so in the past 12 months.

HEALTH CONSEQUENCES: MORTALITY AND MORBIDITY

Age-standardized death rates (ASDR) and alcohol-attributable fractions (AAF), 2016

	ASDR*		AAF (%)		AAD** (Number)
Liver cirrhosis, males / females	16.3	6.7	76.6	68.0	53
Road traffic injuries, males / females	10.1	2.6	55.4	40.3	16
Cancer, males / females	188.9	125.4	6.7	4.1	63

*Per 100 000 population (15+); **alcohol-attributable deaths, both sexes.

Years of life lost (YLL) score*, 2016

LEAST < 1 **2** 3 4 5 > MOST

* Based on alcohol-attributable years of life lost.

Prevalence of alcohol use disorders and alcohol dependence (%), 2016*

	Alcohol use disorders**	Alcohol dependence
Males	10.5	4.7
Females	2.7	1.2
Both sexes	6.6	2.9
WHO European Region	8.8	3.7

* 12-month prevalence estimates (15+); **including alcohol dependence and harmful use of alcohol.

POLICIES AND INTERVENTIONS

Written national policy (adopted/revised) / National action plan	No / No	National maximum legal blood alcohol concentration (BAC) when driving a vehicle (general / young / professional), in %	0.05 / 0.02 / 0.02
Excise tax on beer / wine / spirits	Yes / No / Yes	Legally binding regulations on alcohol advertising / product placement (any)	Yes / No
National legal minimum age for off-premise sales of alcoholic beverages (beer / wine / spirits)	16 / 16 / 16	Legally binding regulations on alcohol sponsorship / sales promotion (any)	No / No
National legal minimum age for on-premise sales of alcoholic beverages (beer / wine / spirits)	16 / 16 / 16	Legally required health warning labels on alcohol advertisements / containers (any)	No / No
Restrictions for on-/off-premise sales of alcoholic beverages (any):		National government support for community action (any)	Yes
Hours, days / places, density	Yes, No / No , Yes	National monitoring system(s) (any)	No
Specific events / intoxicated persons / petrol stations	No / Yes / No		