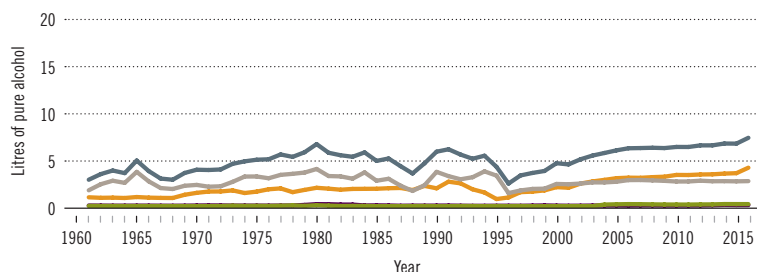


Trinidad and Tobago

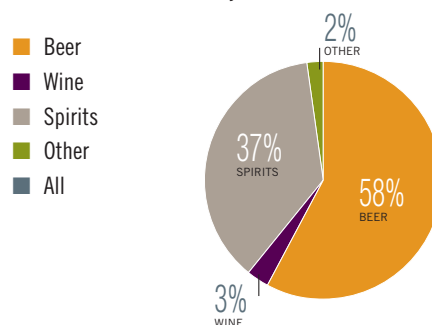
Total population (2016): 1 364 973 ▶ Population aged 15 years and older (15+): 79% ▶ Population in urban areas: 8% ▶ Income group (World Bank): High income

ALCOHOL CONSUMPTION: LEVELS AND PATTERNS

Recorded alcohol per capita (15+) consumption, 1961–2016



Recorded alcohol per capita (15+) consumption (in litres of pure alcohol) by type of alcoholic beverage, 2016 or latest year available



Alcohol per capita (15+) consumption (in litres of pure alcohol)

	2010*	2016*
Recorded	6.5	7.3
Unrecorded	0.3	1.1
Total**	6.7	8.4
Total males / females	11.1 2.5	13.9 3.1
WHO Region of the Americas	8.2	8.0

* Three-year averages of recorded and unrecorded for 2009–2011 and 2015–2017; **adjusted for tourist consumption.

Total alcohol per capita (15+) consumption, drinkers only (in litres of pure alcohol), 2016

	Litres
Males (15+)	19.2
Females (15+)	6.7
Both sexes (15+)	14.2

Prevalence of heavy episodic drinking* (%), 2016

	Population (15+ years)	Drinkers only (15+ years)	Population (15–19 years)	Drinkers only (15–19 years)
Males	46.9	64.8	41.5	72.1
Females	13.3	29.2	10.7	35.6
Both sexes	29.8	50.7	26.3	59.8

* Consumed at least 60 grams or more of pure alcohol on at least one occasion in the past 30 days.

Abstainers (%), 2016

	Males	Females	Both sexes
Lifetime abstainers (15+)	10.8	29.7	20.5
Former drinkers* (15+)	16.7	24.7	20.8
Abstainers (15+), past 12 months	27.5	54.4	41.3

* Persons who used to drink alcoholic beverages but have not done so in the past 12 months.

HEALTH CONSEQUENCES: MORTALITY AND MORBIDITY

Age-standardized death rates (ASDR) and alcohol-attributable fractions (AAF), 2016

	ASDR*		AAF (%)		AAD** (Number)
Liver cirrhosis, males / females	13.9	5.4	69.0	50.8	72
Road traffic injuries, males / females	35.8	7.3	44.8	30.3	97
Cancer, males / females	197.4	133.5	4.4	2.0	61

* Per 100 000 population (15+); **alcohol-attributable deaths, both sexes.

Years of life lost (YLL) score*, 2016

LEAST < 1 2 3 **4** 5 > MOST

* Based on alcohol-attributable years of life lost.

Prevalence of alcohol use disorders and alcohol dependence (%), 2016*

	Alcohol use disorders**	Alcohol dependence
Males	9.9	3.8
Females	3.7	1.8
Both sexes	6.7	2.8
WHO Region of the Americas	8.2	4.1

* 12-month prevalence estimates (15+); **including alcohol dependence and harmful use of alcohol.

POLICIES AND INTERVENTIONS

Written national policy (adopted/revised) / National action plan	No / —
Excise tax on beer / wine / spirits	Yes / Yes / Yes
National legal minimum age for off-premise sales of alcoholic beverages (beer / wine / spirits)	18 / 18 / 18
National legal minimum age for on-premise sales of alcoholic beverages (beer / wine / spirits)	18 / 18 / 18
Restrictions on on-/off-premise sales of alcoholic beverages (any):	
Hours, days / places, density	No, No / Yes, No
Specific events / intoxicated persons / petrol stations	Yes / Yes / No

National maximum legal blood alcohol concentration (BAC) when driving a vehicle (general / young / professional), in %	0.08 / 0.08 / 0.08
Legally binding regulations on alcohol advertising / product placement (any)	No / No
Legally binding regulations on alcohol sponsorship / sales promotion (any)	No / No
Legally required health warning labels on alcohol advertisements / containers (any)	No / No
National government support for community action (any)	Yes
National monitoring system(s) (any)	Yes