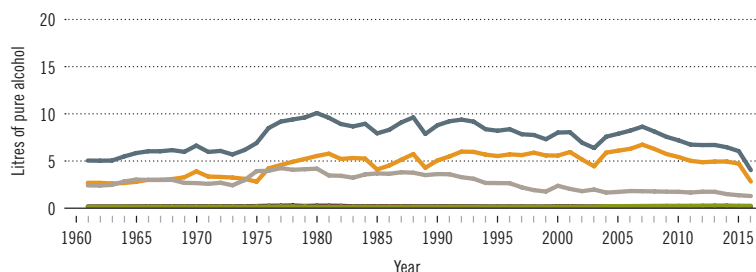


Venezuela (Bolivarian Republic of)

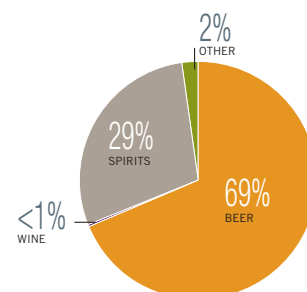
Total population (2016): 31 518 855 ▶ Population aged 15 years and older (15+): 72% ▶ Population in urban areas: 89% ▶ Income group (World Bank): Upper-middle income

ALCOHOL CONSUMPTION: LEVELS AND PATTERNS

Recorded alcohol per capita (15+) consumption, 1961–2016



Recorded alcohol per capita (15+) consumption (in litres of pure alcohol) by type of alcoholic beverage, 2016 or latest year available



Alcohol per capita (15+) consumption (in litres of pure alcohol)

	2010*		2016*	
Recorded	7.1		4.6	
Unrecorded	1.3		1.1	
Total**	8.5		5.6	
Total males / females	14.1	3.0	9.7	1.7
WHO Region of the Americas	8.2		8.0	

* Three-year averages of recorded and unrecorded for 2009–2011 and 2015–2017; **adjusted for tourist consumption.

Total alcohol per capita (15+) consumption, drinkers only (in litres of pure alcohol), 2016

	Litres
Males (15+)	18.9
Females (15+)	6.8
Both sexes (15+)	14.9

Prevalence of heavy episodic drinking* (%), 2016

	Population (15+ years)	Drinkers only (15+ years)	Population (15–19 years)	Drinkers only (15–19 years)
Males	25.7	50.2	19.4	55.7
Females	4.6	18.2	3.0	21.3
Both sexes	15.0	39.5	11.3	45.9

* Consumed at least 60 grams or more of pure alcohol on at least one occasion in the past 30 days.

Abstainers (%), 2016

	Males	Females	Both sexes
Lifetime abstainers (15+)	15.5	38.6	27.2
Former drinkers* (15+)	33.3	36.3	34.8
Abstainers (15+), past 12 months	48.8	74.8	62.0

* Persons who used to drink alcoholic beverages but have not done so in the past 12 months.

HEALTH CONSEQUENCES: MORTALITY AND MORBIDITY

Age-standardized death rates (ASDR) and alcohol-attributable fractions (AAF), 2016

	ASDR*		AAF (%)		AAD** (Number)
Liver cirrhosis, males / females	25.3	4.7	60.5	34.5	1 654
Road traffic injuries, males / females	91.2	15.3	32.6	19.5	3 902
Cancer, males / females	165.3	127.5	5.5	2.4	1 135

*Per 100 000 population (15+); **alcohol-attributable deaths, both sexes.

Years of life lost (YLL) score*, 2016

LEAST < 1 2 3 **4** 5 > MOST

* Based on alcohol-attributable years of life lost.

Prevalence of alcohol use disorders and alcohol dependence (%), 2016*

	Alcohol use disorders**	Alcohol dependence
Males	10.0	3.9
Females	3.8	1.8
Both sexes	6.9	2.8
WHO Region of the Americas	8.2	4.1

* 12-month prevalence estimates (15+); **including alcohol dependence and harmful use of alcohol.

POLICIES AND INTERVENTIONS

Written national policy (adopted/revised) / National action plan	No / —	National maximum legal blood alcohol concentration (BAC) when driving a vehicle (general / young / professional), in %	0.08 / 0.08 / 0.08
Excise tax on beer / wine / spirits	Yes / Yes / Yes	Legally binding regulations on alcohol advertising / product placement (any)	Yes / No
National legal minimum age for off-premise sales of alcoholic beverages (beer / wine / spirits)	18 / 18 / 18	Legally binding regulations on alcohol sponsorship / sales promotion (any)	— / —
National legal minimum age for on-premise sales of alcoholic beverages (beer / wine / spirits)	18 / 18 / 18	Legally required health warning labels on alcohol advertisements / containers (any)	— / No
Restrictions for on-/off-premise sales of alcoholic beverages (any):		National government support for community action (any)	Yes
Hours, days / places, density	Yes, Yes / No, No	National monitoring system(s) (any)	Yes
Specific events / intoxicated persons / petrol stations	Yes / — / No		