

The importance of the One Health concept in MERS-CoV Investigation Protocols design and Implementation



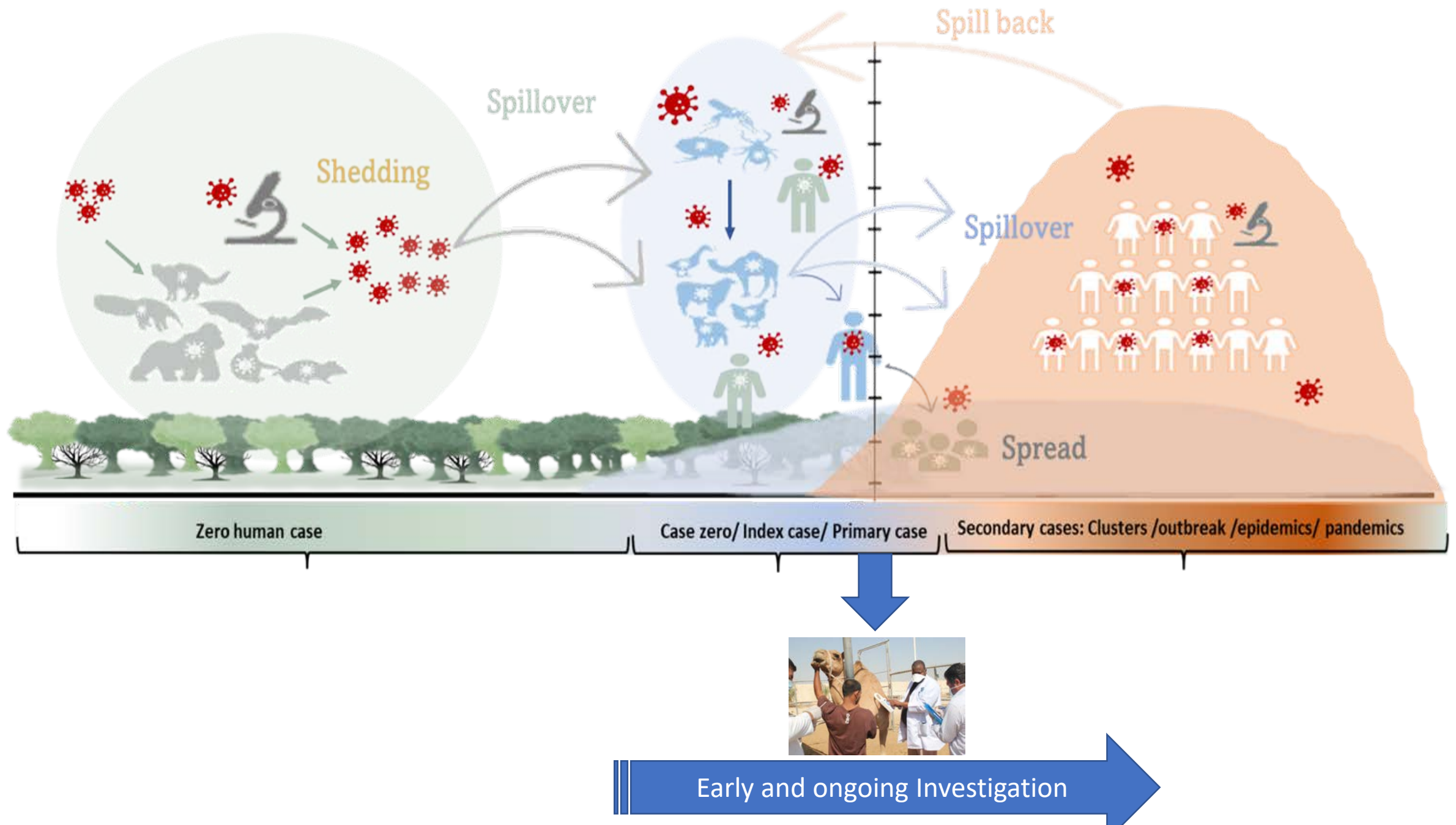
Dr. Elmoubasher Farag
Member of (OHHLEP)

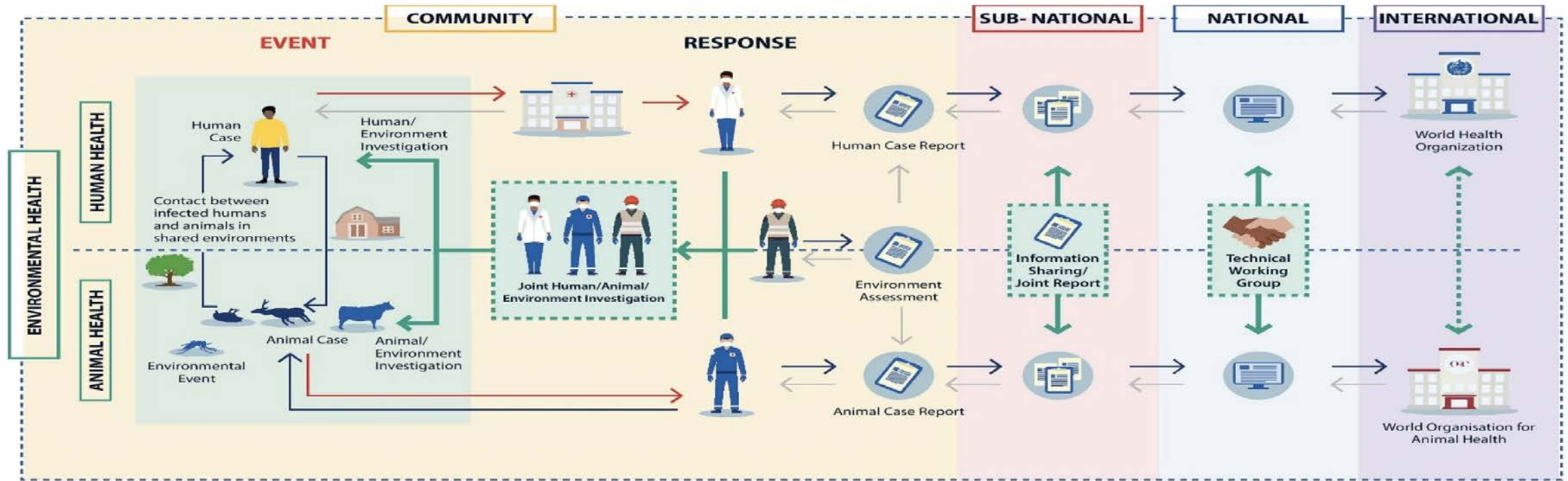
Outlines:



- **Background and Introducing on why we need one health ?**
- **Why we urgently need the Protocol ?**
- **How to make the efficient and effective one health implementation of the Protocol ?**

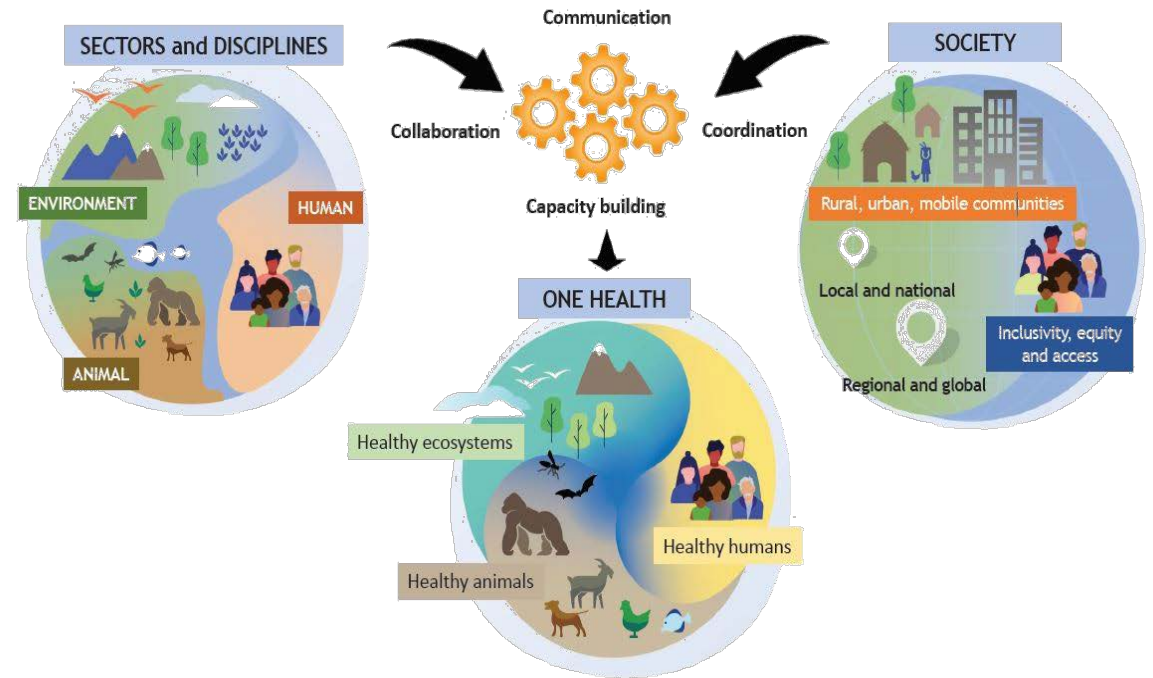






Goal

To assemble and unify the different methods, tools, and strategies driven by the various bodies of scientific knowledge using the One Health approach, to eventually standardize the investigations of MERS-CoV



¹ The One Health definition developed by the OHHLEP states

Objectives

1. To obtain better (and as early as possible) understanding of the zoonotic spill over
2. To facilitate the understanding of the epidemiological characteristics of the outbreak
3. To recommend one health ,evidence based prevention and control measures

¹ <https://www.who.int/news/item/01-12-2021-tripartite-and-unep-support-ohhlep-s-definition-of-one-health>

Rationale

- Lack of a unified and structured approach to standardize outbreak investigations local, regional and globally – complementation of investigative efforts -comparing of results – fast track for evidence generation – unlimited benefits .
- Need for a framework/ Protocols to study the emergence and re-emergence of MERS-CoV a holistic approach
- Can help on investigate the origin of the Virus –monitoring of the risk factors and the virus

Significance of the Framework



Improve the understanding of the pathogen's origins.



Improve the global preparedness and response to emerging pathogens of similar origin



Improve the speed, quality, consistency, coordination, and comprehensiveness of investigations

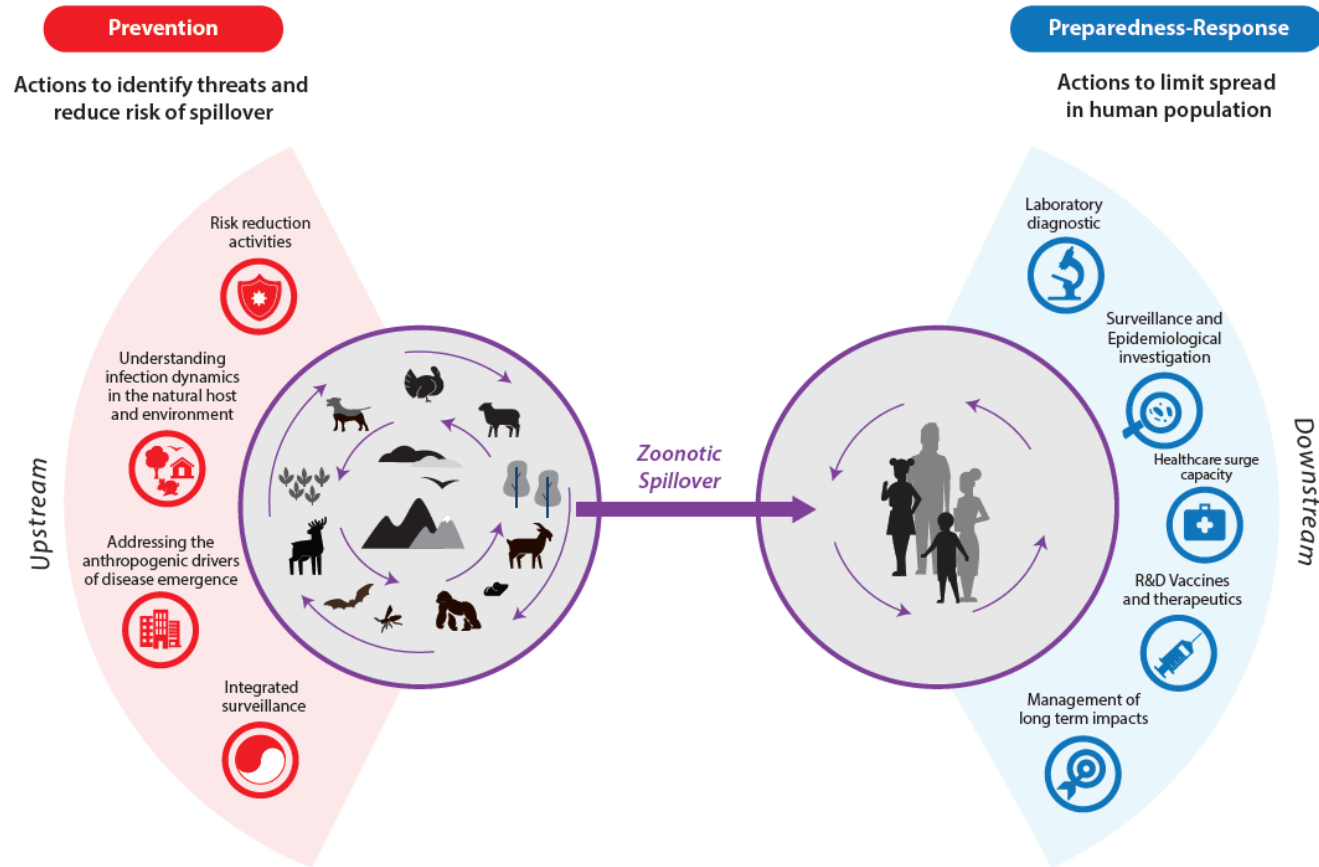


Foreground the commitment of international health regulations (IHR) and PPR



Consider the diverse specializations and expertise via a participatory and integrative approach

Prevention of Spillover



ONE HEALTH HIGH-LEVEL EXPERT PANEL

PREVENTION OF ZOOONOTIC SPILLOVER

FROM RELYING ON
RESPONSE TO REDUCING
THE RISK AT SOURCE
OHHLEP whitepaper/Opinion piece

PLoS Pathogens, submitted

What is need for the efficient and effective one health implementation of the Protocol ?

Capital

- Efficient multidisciplinary team structure
- Adequate resources
- Governance , TORs ,Roles and Responsibilities
- Global partnernships
- In advance Country Quadripartite agreement and endorsements
- In advance ethical approval form both the human and Animal health

Support

- Logistical
- Political
- Use of technology
- Accessibility
- Data sharing
- One Bucket approach
- Laboratory

Operation

- Joint and Timely investigation and analysis
- Community engagement and participation
- Collaborative approach to teamwork
- Systematic approach to investigation
- High quality and valid samples
- Investigation Quality measures
- Early notification to international agencies
- Piloting ,training , top tabletop exercise , integration to RRT ,FETP



