

---

# Cholera in 2026: A Global Overview

EPI-WIN Webinar

3 June 2026



World Health  
Organization

# Global cholera and AWD situation

1 January to 24 May 2026 | Week 21

**101 260** Cases reported in 2026

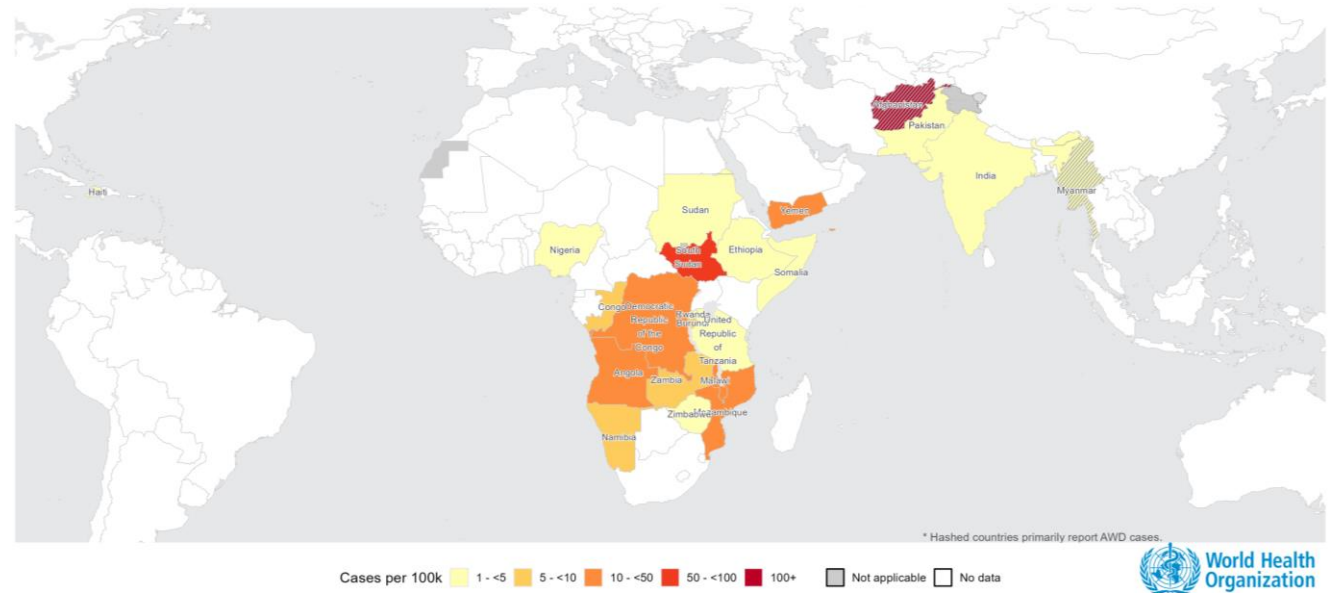
**1 150** Deaths reported in 2026

**22** Countries officially reporting cases in 2026

**4** Countries currently in “Acute Crisis”

Angola, Democratic Rep. of Congo, Nigeria, South Sudan

Global cholera / AWD attack rate per 100 000 population since Jan 2026



The designations employed and the presentation of the material in this publication do not imply the expression of any opinion whatsoever on the part of WHO concerning the legal status of any country, territory, city or area or of its authorities, or concerning the delimitation of its borders or boundaries. Dotted and dashed lines on maps represent approximate border lines for which there may not yet be full agreement.

Data Source: World Health Organization  
Map Production: WHO Health Emergencies Programme  
© WHO 2026. All rights reserved.



# Global cholera and AWD trends

2026 vs 2025 | Weeks 1 to 19

Total cases

**91 052**

▼ **53%** vs 2025

Total deaths

**1 109**

▼ **59%** vs 2025

Countries reporting

**22**

▼ **24%** vs 2025

Case fatality rate

**1.2%**

▼ **0.2 pp** vs 2025

## Burden concentrated in fewer countries



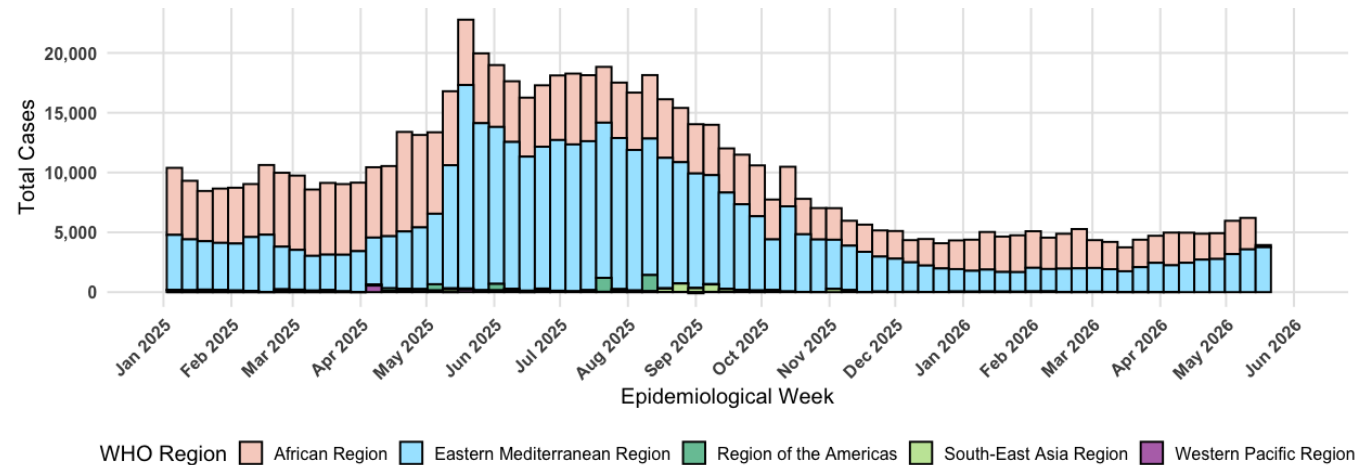
from just 5 countries

83% of all deaths also come from the top 5 countries

▲ up from 76% of cases in 2025



## Global weekly cholera and AWD cases by WHO Region, Jan 2025 – May 2026



---

# From Fragmented Data to Global Intelligence: WHO's Cholera Surveillance Workflow

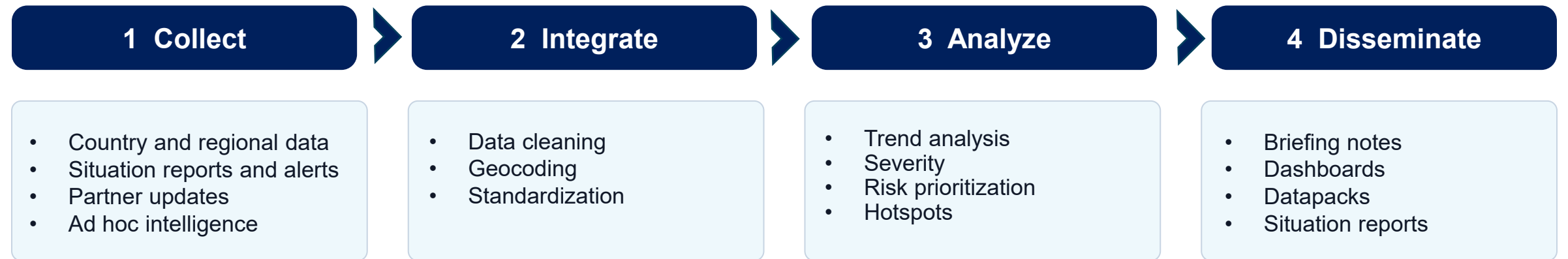
EPI-WIN Webinar


3 June 2026



# The workflow at a glance

A repeatable pipeline that turns weekly country, regional, and partner reporting into validated global intelligence



Innovation is not simply about collecting more data. It is about making better use of existing data and turning them into timely, integrated intelligence for public health action. 



# Integrate: From fragments to one picture

Heterogeneous inputs are reconciled into a single, consistent weekly dataset

1 Collect

2 Integrate

3 Analyze

4 Disseminate

1

## Source hierarchy

When sources disagree, a defined order of precedence determines which figure is retained.

2

## Data cleaning and geocoding

Data are cleaned and geocoded and aligned to WHO standards.

3

## Standardize variables

Sources are mapped to common fields: suspected cases, deaths, attack rate and case fatality rates.



**Tools**  
Excel, R, GitHub



**People**  
1–2 analysts



**Timing**  
≈ half a day per weekly cycle

# Analyze: From numbers to risk

The standardized dataset is turned into trends, severity, and operational priorities

## 1 Collect

## 2 Integrate

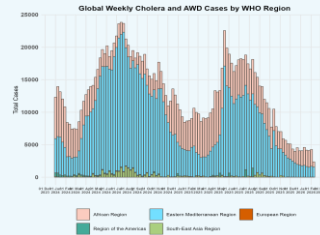
## 3 Analyze

## 4 Disseminate

1

### Trends

Weekly epicurves and year-on-year comparisons show whether transmission is rising, falling or shifting.



2

### Severity

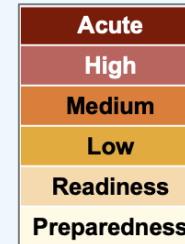
Case fatality rates are tracked against WHO's 1% emergency threshold to flag where severity is high.



3

### Risk tiers

Countries are classified using burden, growth rate and case fatality ratio thresholds.



4

### Hotspots

Subnational analysis pinpoints the districts and towns driving each outbreak.



### Tools

R, ArcGIS, GitHub



### People

1–2 analysts with senior review

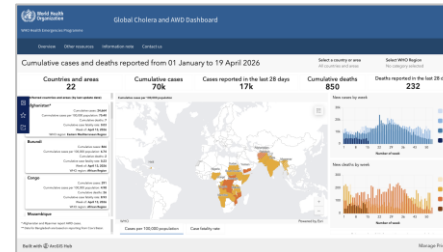
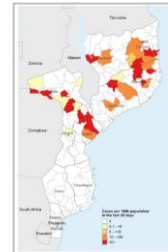


### Timing

≈ 1 day per weekly cycle

# Disseminate: Cholera intelligence products

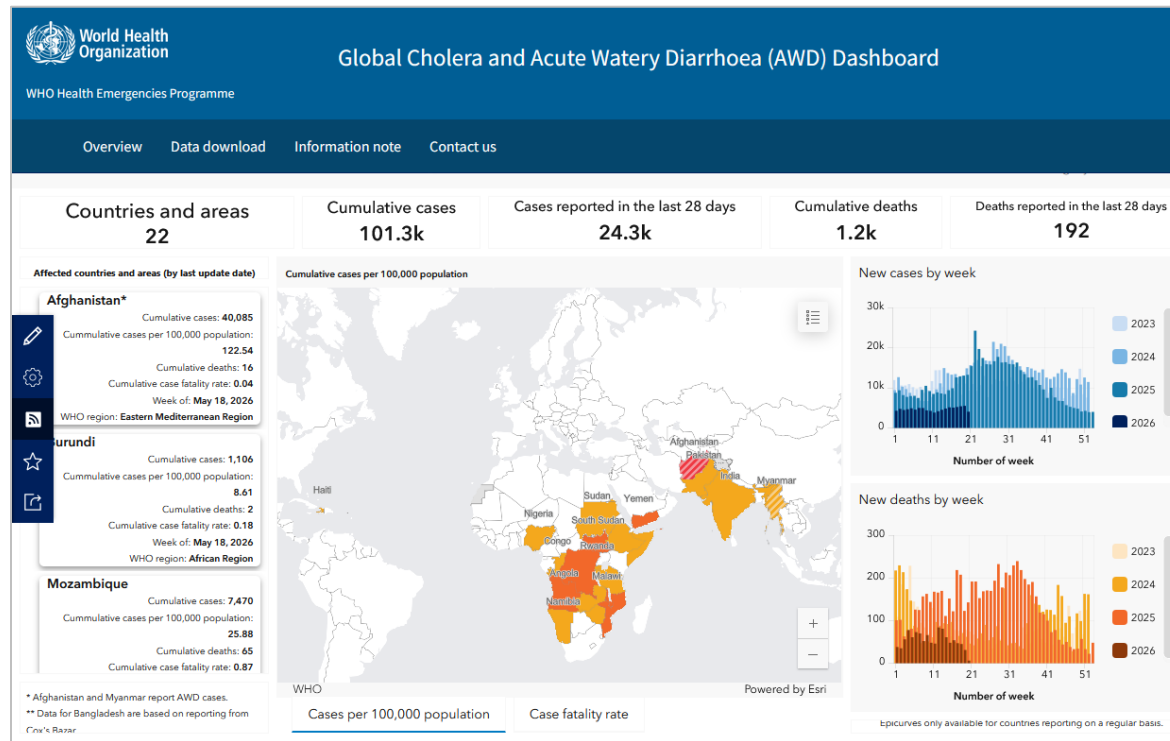
Recurring products turn validated cholera surveillance data into decision-support



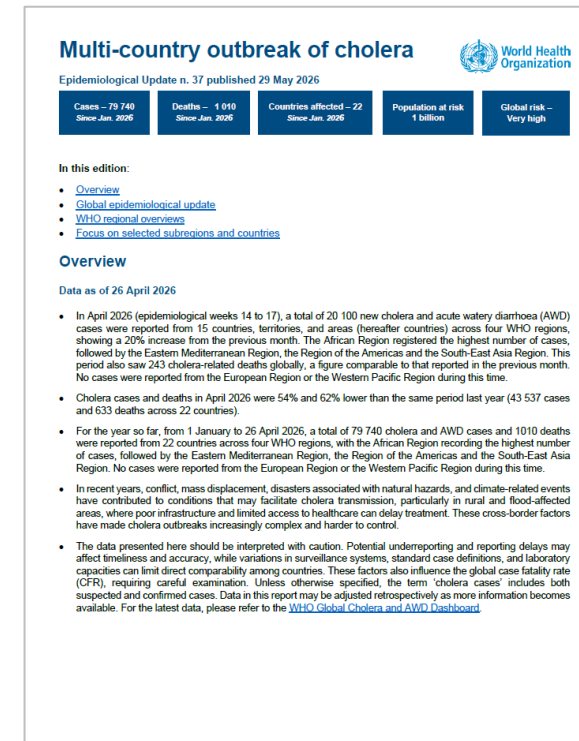
	<b>Epidemiological analyses</b>	<b>Dashboard</b>	<b>Situation reports</b>
<b>Cadence</b>	Weekly and monthly	Monthly	Monthly
<b>Audience</b>	WHO technical teams Partner organizations	Member States Researchers General public Media	Member States Researchers General public Media
<b>Structure</b>	Global overview Risk prioritization Regional overviews Country analyses	KPIs Maps Epicurves	Global overview Regional overviews Country analyses
<b>Purpose</b>	Monitoring and prioritization	Situational awareness	Situational awareness

# Disseminate: Cholera intelligence products

Recurring products turn validated cholera surveillance data into decision-support



<https://who-global-cholera-and-awd-dashboard-1-who.hub.arcgis.com/>



<https://www.who.int/publications/>

<https://www.who.int/emergencies/situations/cholera-upsurge>



---

# Key takeaways

1. **One pipeline.** Fragmented reports are transformed through automated and manual processes into validated global intelligence.
2. **A trusted picture.** Diverse inputs are triangulated, reconciled, and interpreted to produce coherent global analysis.
3. **One data stream.** A single standardized dataset feeds multiple products for monitoring, prioritization, and decision-making.
4. **Built for countries.** The workflow strengthens existing country surveillance systems rather than creating parallel reporting demands.
5. **A weekly global view.** The innovation is simple but powerful: tracking cholera trends in near real time beyond annual reporting.

---

# Thank you

