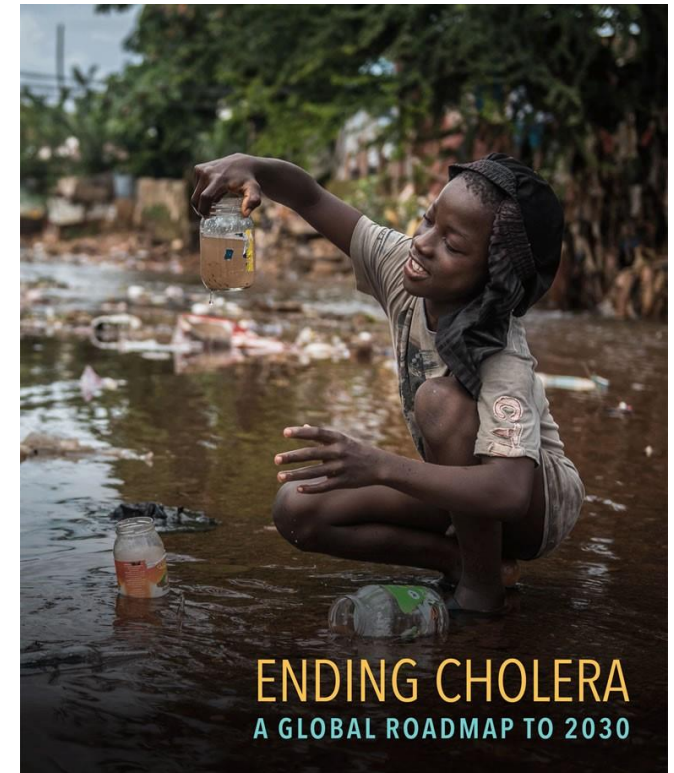




GLOBAL TASK FORCE ON
CHOLERA CONTROL

ENDING CHOLERA — A GLOBAL ROADMAP TO 2030

GTCCC Secretariat
September 2025



A BROAD & INCLUSIVE PARTNERSHIP

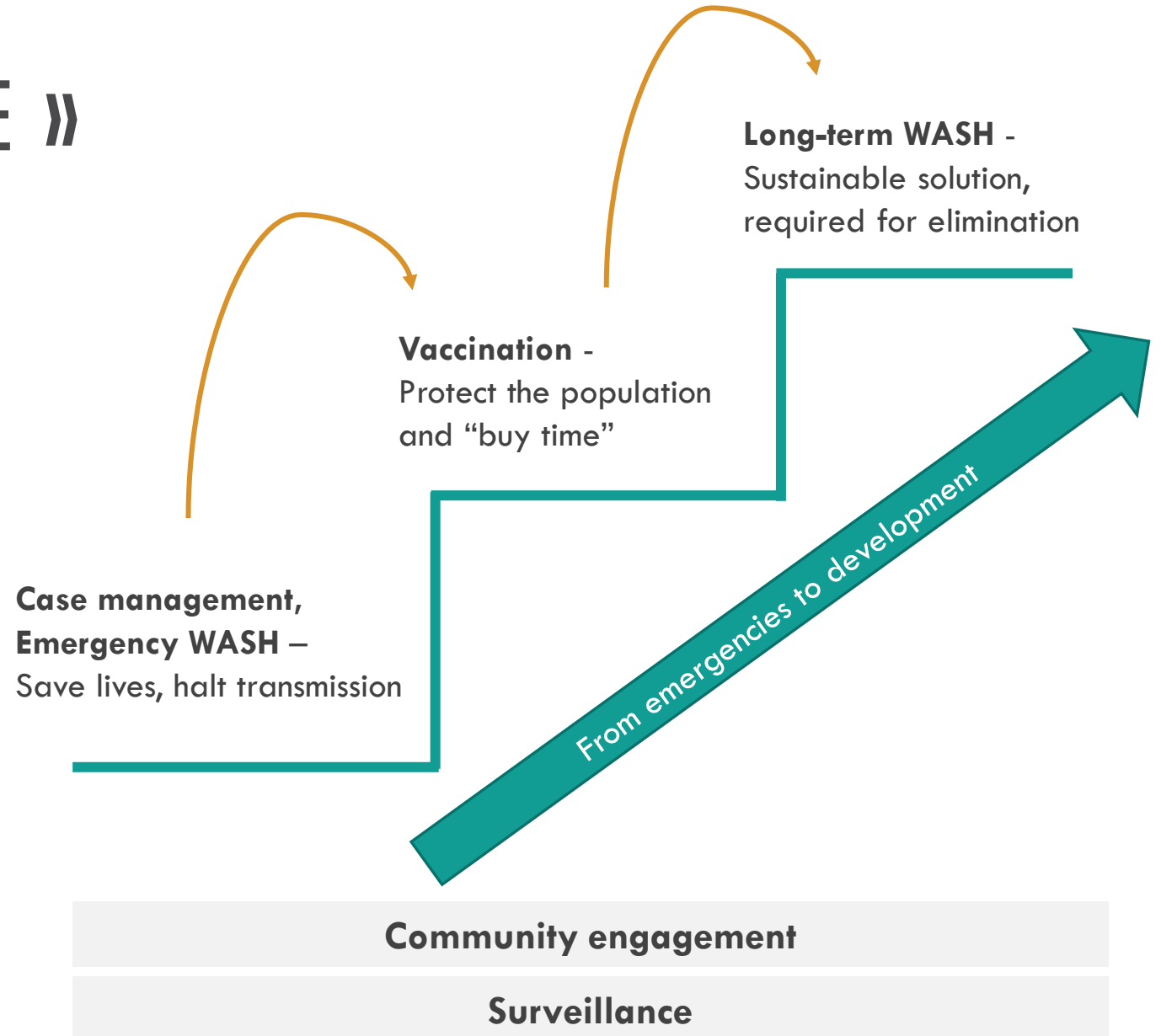
Diversity, Complementarity,
Health, WASH
Maximize synergies and impact

ENDING CHOLERA: A GLOBAL ROADMAP TO 2030

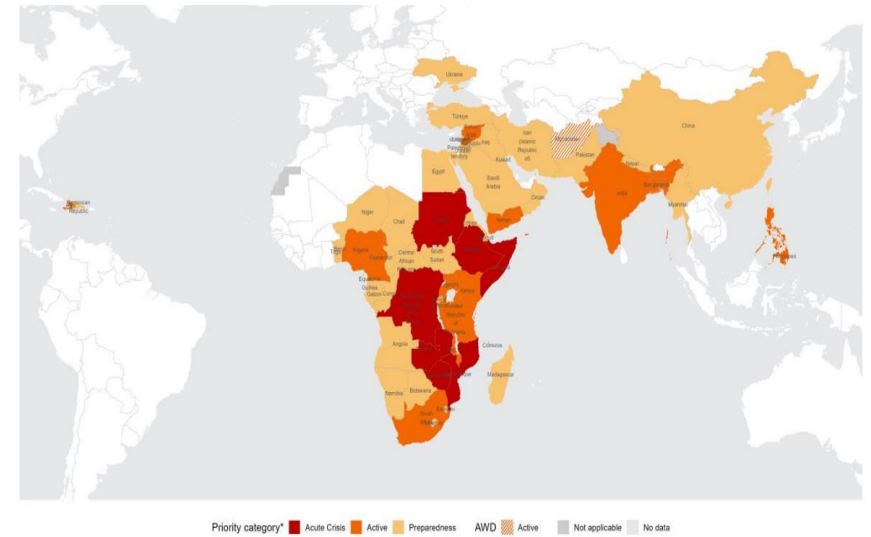


« THEORY OF CHANGE »

- Change reactive approach, adopt an approach to prepare for and prevent outbreaks
- **Target and coordinate multisectoral** interventions, leaning on:
 - Strong surveillance to target interventions
 - A clear coordination mechanism
 - Country commitment
 - An engaged community



GLOBAL CHOLERA SITUATION



Global Cholera and AWD Situation

1 January to 31 August 2025 (W35)

435 006

Cases reported in 2025

a **17.9% decline** in reported cases
compared with the same period in 2024

5 007

Deaths reported in 2025

a **51.1% increase** in reported cases
compared with the same period in 2024

31

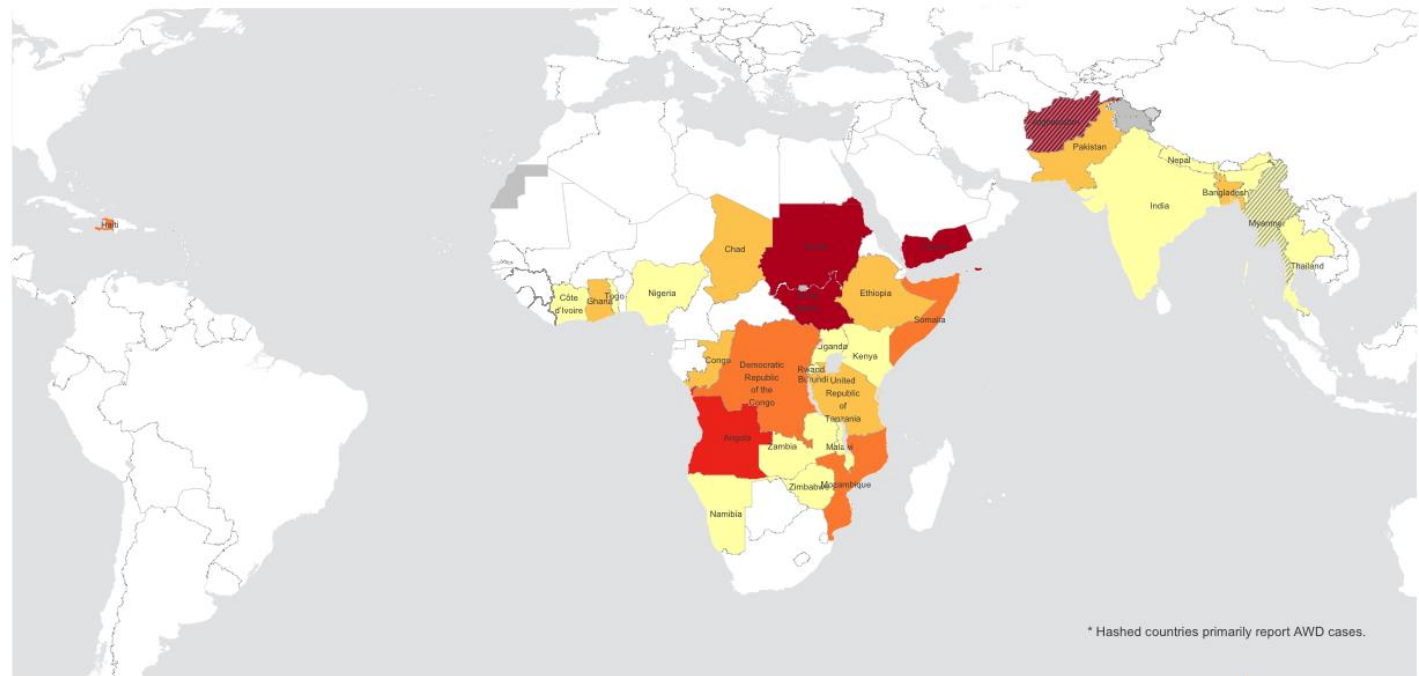
Countries officially
reporting cases in 2025

5

Countries currently
in “Acute Crisis”

Chad, Democratic Republic of Congo,
Republic of Congo, South Sudan,
Sudan

Global cholera / AWD attack rate per 100 000 population since Jan 2025



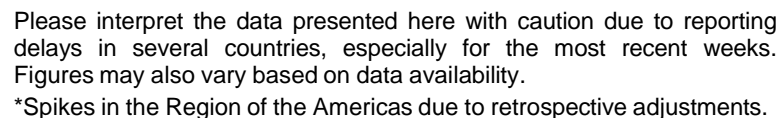
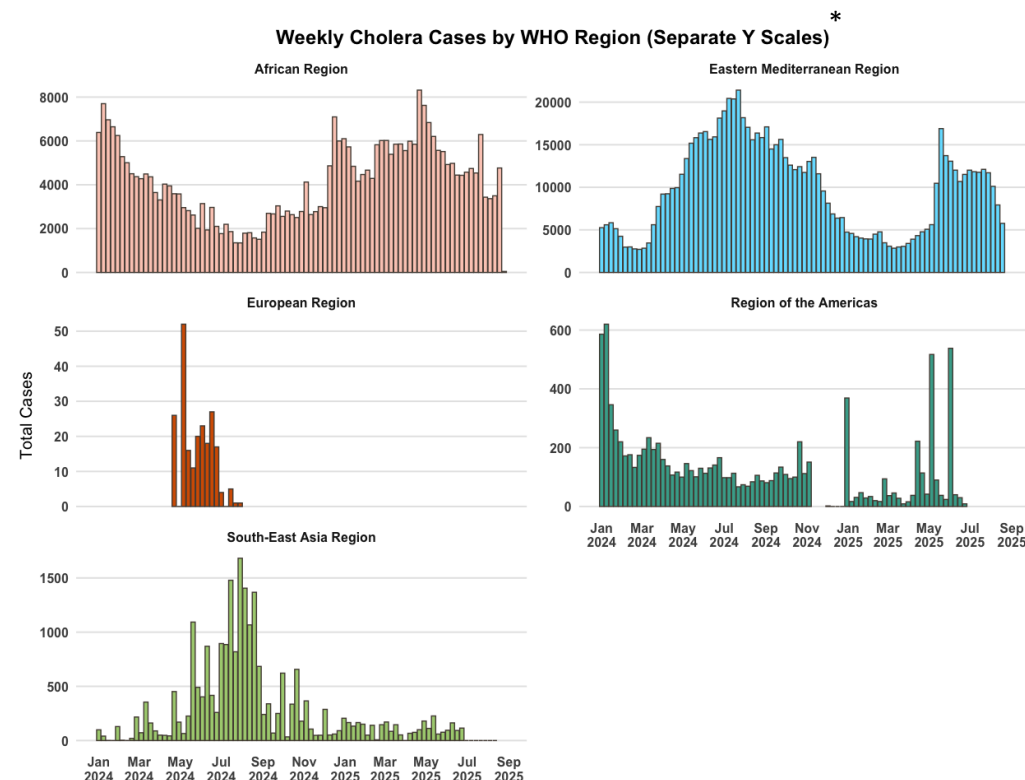
Cases per 100k 0.01 - <5 5 - <10 10 - <50 50 - <100 100+ Not applicable No data

The designations employed and the presentation of the material in this publication do not imply the expression of any opinion whatsoever on the part of WHO concerning the legal status of any country, territory, city or area or of its authorities, or concerning the delimitation of its frontiers or boundaries. Dotted and dashed lines on maps represent approximate border lines for which there may not yet be full agreement.

Data Source: World Health Organization
Map Production: WHO Health Emergencies Programme
© WHO 2025. All rights reserved.

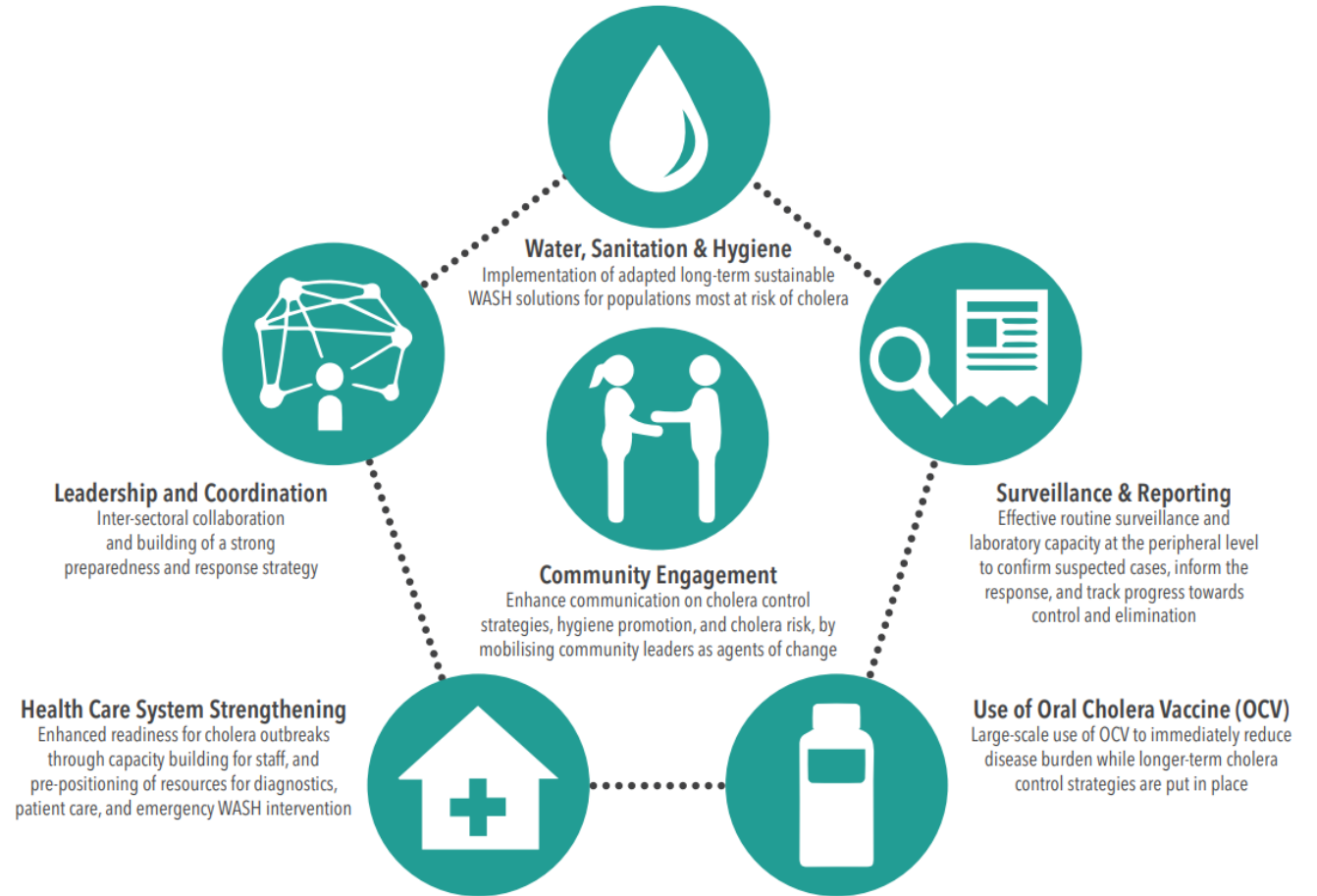


1 January 2024 to 31 August 2025



A PACKAGE OF MEASURES TO CONTROL CHOLERA

The GTFCC encourages countries to develop **National Cholera Control Plans** to plan for and monitor the implementation of cholera control measures



Thank you

Together we can
#endcholera



GLOBAL TASK FORCE ON
CHOLERA CONTROL

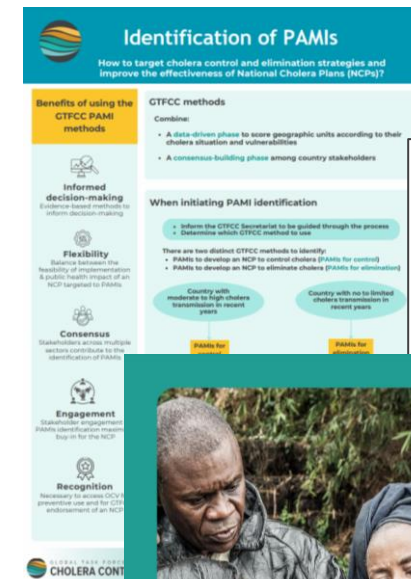
RESOURCES AND TOOLS



TOOLS TO SUPPORT NCP DEVELOPMENT

- [NCP Interim Guiding Document](#)
- [Template for National Cholera Plans](#)
- Terms of reference for working groups what to consider when developing the country specific NCP
- [Priority Areas for Multisectoral Interventions \(PAMIs\) – Global Task Force on Cholera Control](#), Technical guidance [Identification of Priority Areas for Multisectoral Interventions \(PAMIs\) for cholera control – Global Task Force on Cholera Control / elimination](#)
- Specific set of guidance and tools per pillar available on the GTFCC website in the [Resources section](#) (use the filter to access the different areas of intervention)

Tools to support countries in developing the situational analysis or SWOT analysis are under development.



Public health surveillance for cholera

Guidance Document
2024

Mandat du groupe de travail chargé de l'élaboration d'un Plan national de lutte contre le choléra (PNC)
Surveillance (épidémiologie et laboratoire)

Traduit de l'anglais, si vous voyez des mots ou des phrases incohérentes, merci d'en référer à amh@webmail@gtfccc.org

Représentants/experts recommandés
proposée devra être adaptée selon le contexte du pays. Il pourrait être
tenu un groupe de base auquel des membres supplémentaires peuvent être
ajoutés pour des sujets spécifiques.
du groupe de travail (membre du mécanisme de coordination national)
à Santé
des de la surveillance et de l'épidémiologie du choléra (aux niveaux national et
régional)
la population/des statistiques/de la planification
des laboratoires
des de l'OMS
de la surveillance et au sein des laboratoires
engagement communautaire/représentants des communautés

référence
Cholera - feuille de route mondiale pour 2030
orientation provisoire destinée à accompagner les pays pour l'élaboration de
plans de lutte contre le choléra
Identification des points chauds du choléra (en anglais)
outil à l'intention des pays pour identifier les zones d'intervention prioritaires
épidémie de choléra - manuel de terrain

FORCE ON
CONTROL

CONTACT DETAILS

For more information or any enquiries, please reach out to us:

Email: GTFCCsecretariat@who.int

Email: countrysupportplatform@ifrc.org

Website: www.gtfcc.org

Follow us on X: @SecGTFCC