



Gobierno de
México

Salud
Secretaría de Salud

Preparing the Health Sector for the Soccer World Cup 2026



Secretary of Health

Undersecretary of Health Policies and Population Well-being

General Directorate of Epidemiology



2025
Año de
La Mujer
Indígena



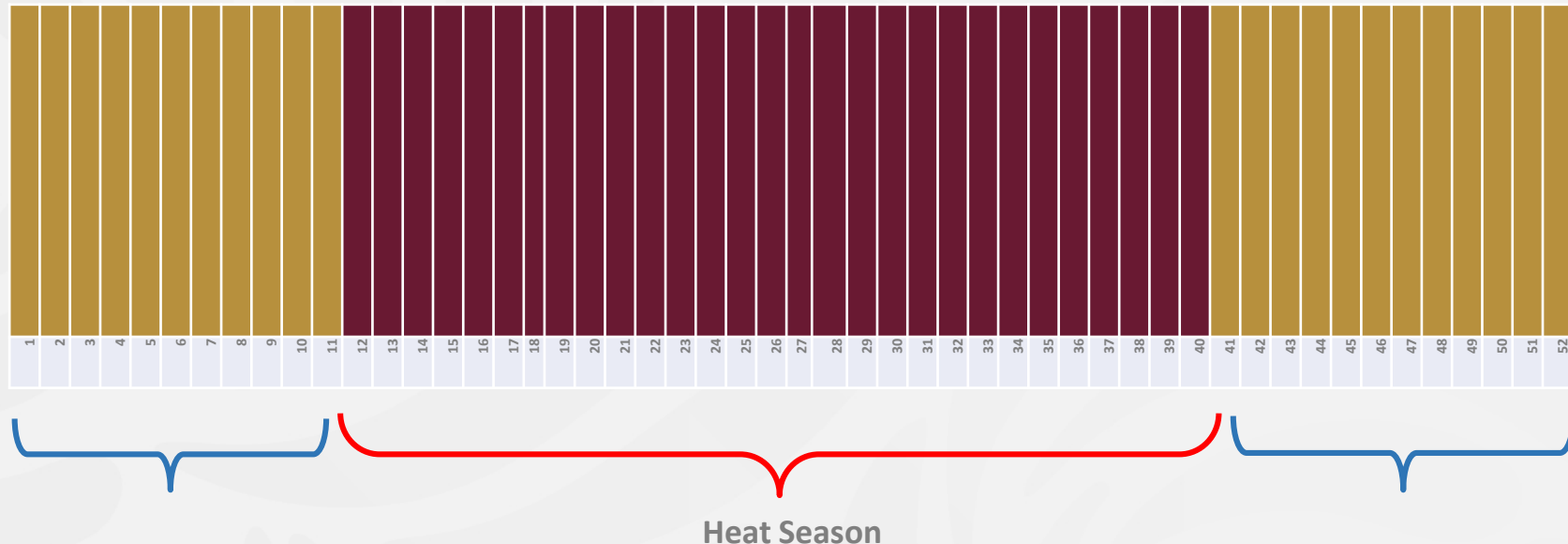
Epidemiological Surveillance of Health Effects due to Extreme Weather Temperatures

- ❖ In the year 2000, epidemiological surveillance began in both seasons: Heat and Cold.
- ❖ Since 2005, it has been carried out continuously and permanently.

System Objective

To collect timely and reliable information on health damages directly related to extreme weather temperatures.

- **Heat Season: From week 12 to week 40**



2025
Año de
**La Mujer
Indígena**

- ❖ It is carried out incorporating information provided by the National Meteorological Service and Civil Protection.
- ❖ It generates information on the occurrence of cases and deaths associated with health damage caused by extreme weather temperatures.



Epidemiological Surveillance of Health Effects due to Extreme Weather Temperatures

- ❖ For the heat season, cases and deaths are recorded due to::

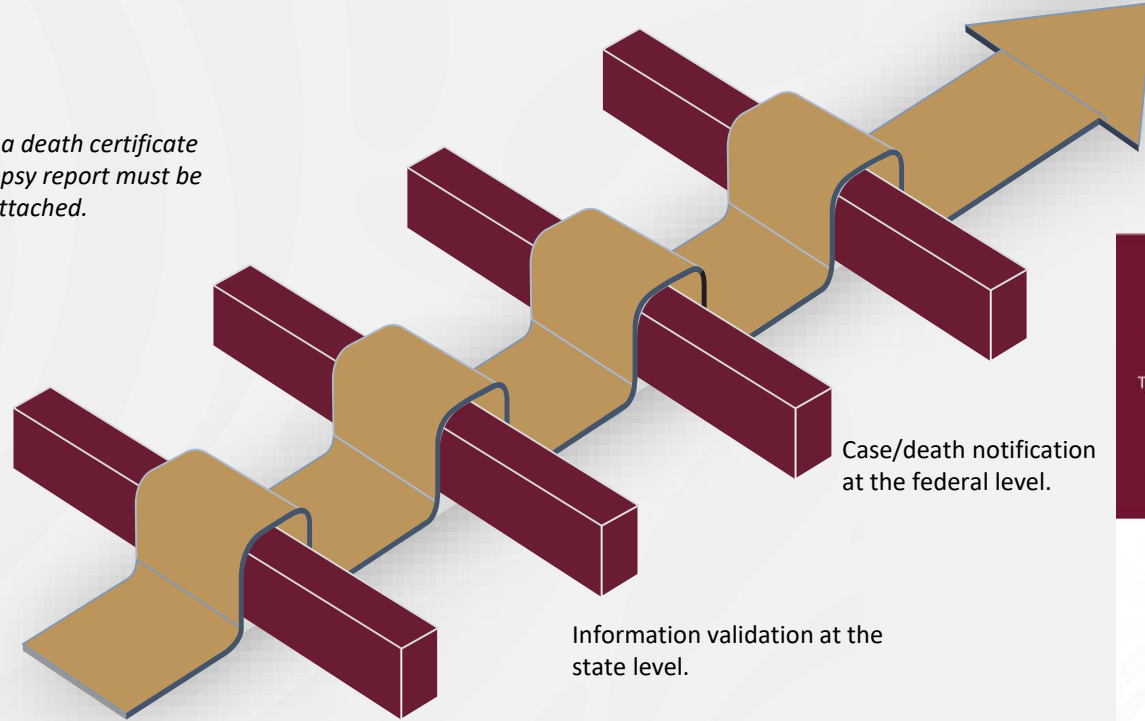
Sunburn

Dehydration

Heat Stroke

Information flow of cases and deaths:

For deaths, a death certificate and/or autopsy report must be attached.



Weekly Bulletin of Cases of Health Effects due to EWC (Extreme Weather Temperatures)

Informe Semanal Daños a la Salud por Temperaturas Naturales Extremas

Temporada de Calor 2025

Semana Epidemiológica 25

Informe Semanal Daños a la Salud por Temperaturas Naturales Extremas Semana Epidemiológica 25

Tabla 1. Casos acumulados de daños a la salud por temperaturas naturales extremas en la temporada de calor 2025, hasta la semana epidemiológica 25.

Entidad	Defunciones		Golpe de Calor		Osmoregulación		Total casos	
	Casos	%	Casos	%	Casos	%	Casos	%
Aguascalientes	26	34.7	14	2.4	-	-	40	4.1
Baja California	15	2.4	12	4.2	2	0.1	29	0.3
Baja California Sur	2	0.1	23	8.5	5	0.2	30	0.3
Belize	6	0.1	12	0.2	5	0.1	23	0.1
Bolivia	10	0.7	3	0.2	-	-	13	0.2
Buenos Aires	14	0.9	5	0.3	1	0.0	20	0.2
Campania	2	0.0	14	0.4	-	-	16	0.2
Chihuahua	13	0.9	3	0.2	-	-	16	0.2
Colombia	18	0.8	16	1.8	-	-	34	0.4
Costa Rica	13	0.3	11	0.2	-	-	24	0.2
El Salvador	1	0.0	10	1.2	-	-	11	0.1
Estados Unidos	3	0.0	1	0.0	-	-	4	0.0
Guatemala	1	0.0	6	0.2	-	-	7	0.0
Haiti	1	0.0	4	0.1	-	-	5	0.0
Honduras	1	0.0	1	0.0	-	-	2	0.0
India	1	0.0	1	0.0	-	-	2	0.0
Italia	1	0.0	1	0.0	-	-	2	0.0
Jamaica	1	0.0	1	0.0	-	-	2	0.0
Kenia	1	0.0	1	0.0	-	-	2	0.0
Malawi	1	0.0	1	0.0	-	-	2	0.0
Maldivas	1	0.0	1	0.0	-	-	2	0.0
Malta	1	0.0	1	0.0	-	-	2	0.0
México	145	1.8	145	5.1	2	0.0	292	3.0

Nota: Los datos de defunciones y casos de golpe de calor son acumulados hasta la semana epidemiológica 25. La información de defunciones y casos de osmoregulación es preliminar y sujeta a validación por los Servicios de Salud Estatales y los Centros de Salud.

Defunciones notificadas por cada entidad federativa:
Las defunciones acumuladas (tabla 2) en la temporada de calor son 28: Golpe de calor (28); lo que representa una letalidad acumulada de 2.99%.

Las entidades que han presentado defunciones son: Veracruz (6), Sonora (5), Chiapas (4), Tamaulipas (4), Tabasco (3), Michoacán (3), Morelos (3), Nayarit (3), Nuevo León (3), San Luis Potosí (3), Quintana Roo (3).



2025
Año de
La Mujer
Indígena

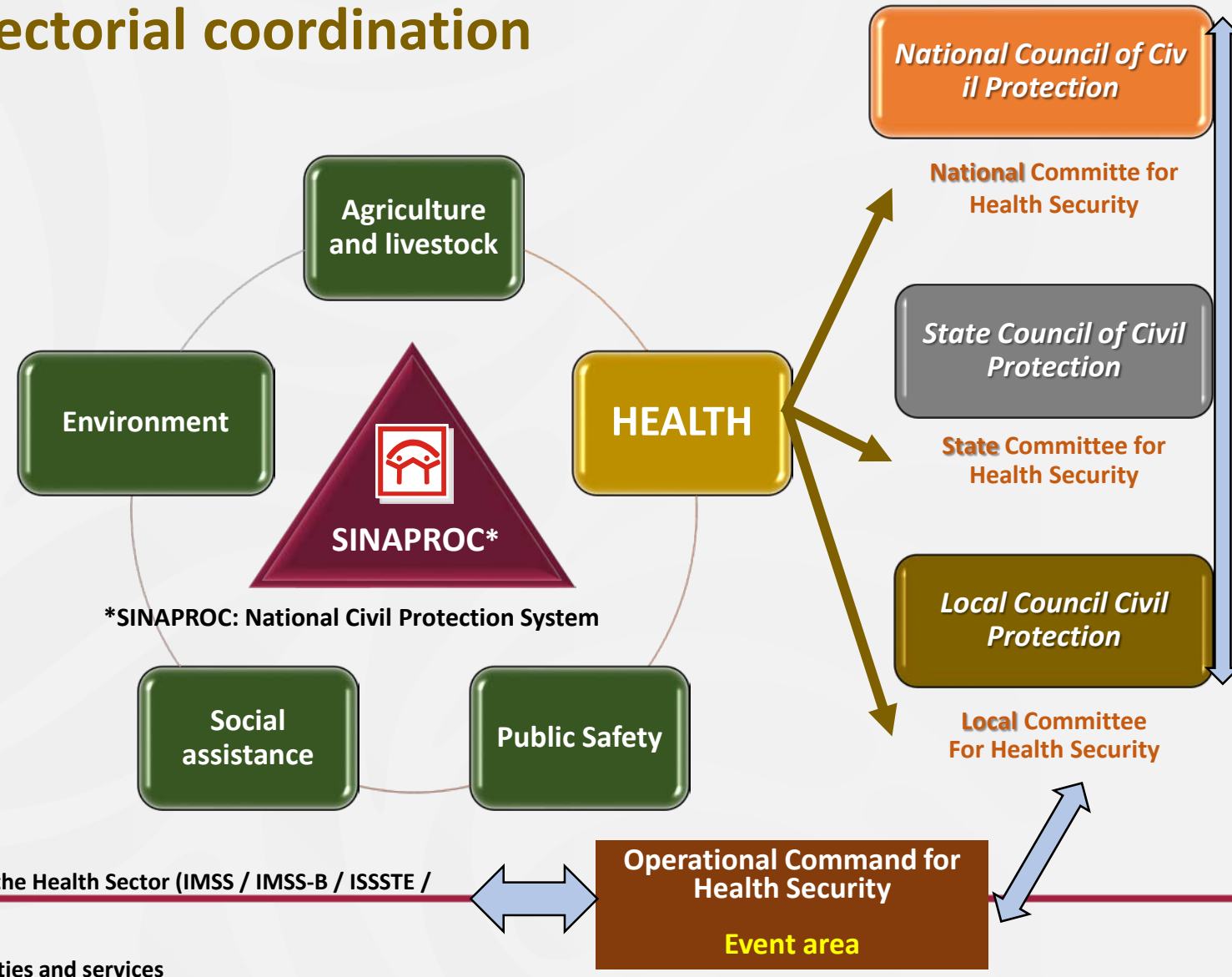


Intersectorial coordination

Objective:

Organize, coordinate, and monitor the implementation and execution of actions for Health Safety.

- ✓ Committee for Health Security.
- ✓ Operational Command for Health Security (Event Area).
- ✓ Coordination with different government agencies (federal, state and local)



Operation facilities:

Federal: Ministry of Health and the Health Sector (IMSS / IMSS-B / ISSSTE / SEDENA / SEMAR / PEMEX / DIF)

State: State level Health authorities and services



2025
Año de
La Mujer Indígena

Comprehensive Health Care Operational Model for Multi-Threat Emergencies

Areas of action

- **Health Units:**
 - ✓ Health centers
 - ✓ Hospitals
- **Temporary Shelters**
- **Community:**
 - ✓ Stadiums
 - ✓ Fan Festival
 - ✓ Team base camps
 - ✓ Coordination centers
 - ✓ Hotels
 - ✓ Shopping centers
 - ✓ Tourist sites
 - ✓ Transit Routes
 - ✓ Public transport
 - ✓ Air, land, and sea ports

Damage and Health Risks

Care for Injured and Sick

Prevention and Control of Diseases and Health Risks

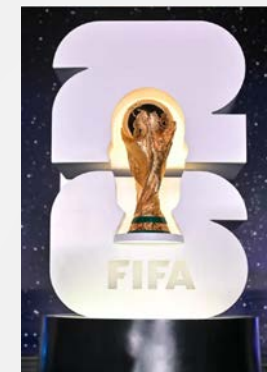
Operation instances:

Health Sector: Secretaria de Salud, IMSS, IMSS-B, ISSSTE, SEDENA, SEMAR, PEMEX, DIF.
Other: Red cross, PAHO/WHO

Health Components

1. Coordination
2. Medical and emergency care
3. Mental health
4. Epidemiological surveillance
5. Laboratory
6. Health regulations (water and food safety)
7. Basic sanitation
8. Health promotion and risk communication (travel and health)
9. Vector control
10. Social communication
11. Administration and finance
12. Other actions:
 - Vaccines and immunization
 - Sexually transmitted infections (STIs)
 - Maternal and child health
 - Etc.

Health Emergency Information System (SIESA)



2025
Año de
La Mujer Indígena

Mass events, outbreaks, disasters, CBRN



Gobierno de
México

Salud
Secretaría de Salud

Health Response Operatives at Mass Events in Mexico



1999 and 2002
Pope John Paul II



2012
Pope Benedict XVI



2010
United Nations
Climate Change
Conference, COP16



2012
Leader Summit G-20



2015
Pope Francis



2011
XVI Pan
American
Games



2014
XXII Central
American and
Caribbean Games



2017
Global
Platform for
Disaster Risk
Reduction -
SENDAI



2025
Año de
La Mujer
Indígena

2026
FIFA World Cup





2025
Año de
**La Mujer
Indígena**

Dra. Yanet Fortunata López Santiago

Directora de Vigilancia de Epidemiológica de Enfermedades No transmisibles

Dirección General de Epidemiología

yaneth.lopez@salud.gob.mx

Dr. Alejandro López Samano

Director de Urgencias Epidemiológicas y Desastres

Centro Nacional de Programas y Control de Enfermedades

alejandro.lopez@salud.gob.mx