

# **Epidemiological Situation of Yellow Fever in Africa; 2024-2025**

**EPI-WIN Webinar, 18th June 2025**

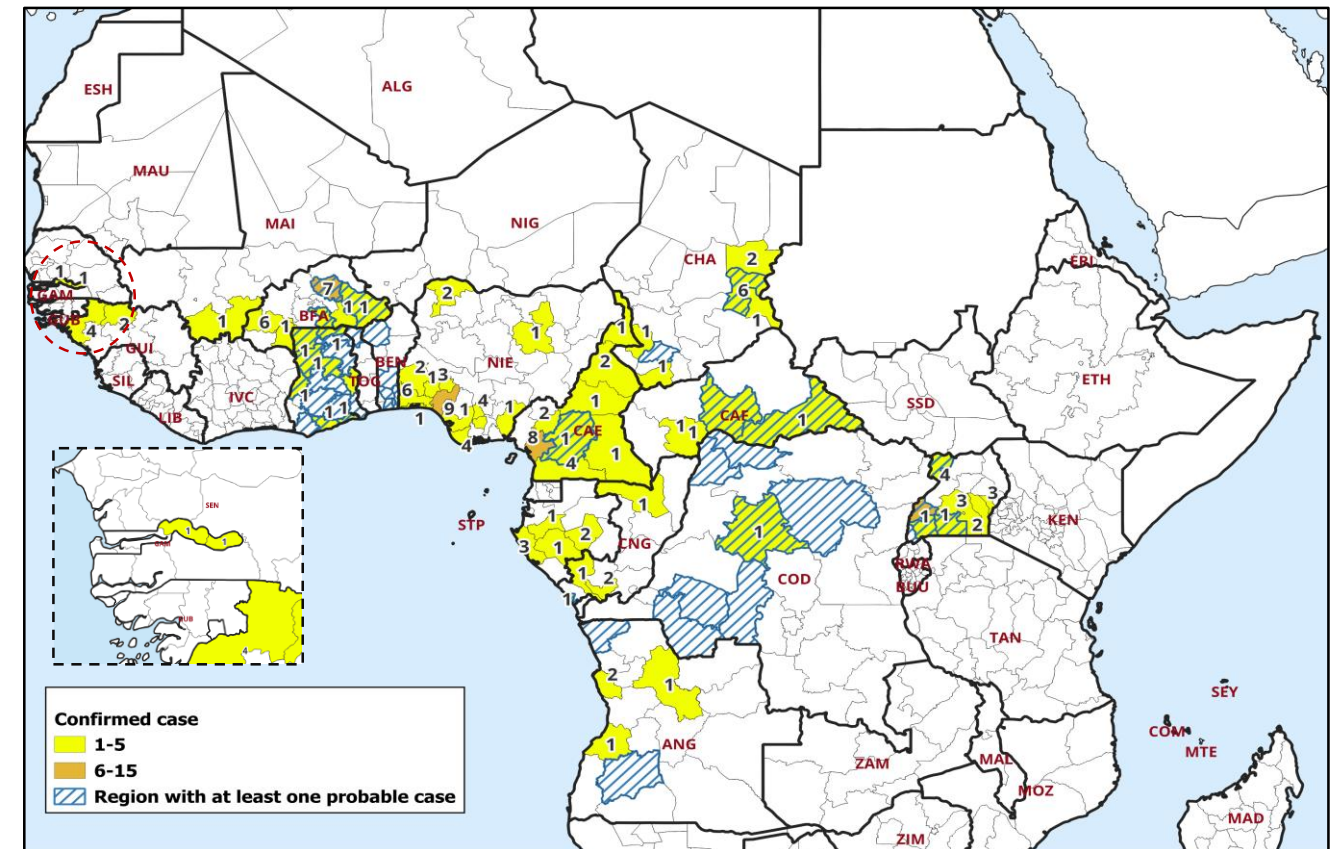
**Dr. Mory KEITA, Regional Advisor, Infectious Hazards Preparedness (IHP)**

# Epidemiology of Yellow Fever in the African Region, 2024

- 248 Yellow Fever (YF) confirmed and probable cases from seventeen countries, 75% of them from six (6) countries: Ghana (47), Uganda (41), Nigeria (37), Burkina Faso (24), Cameroon (21) and Chad (17).
- Five (5) deaths - from Cameroon (2), Uganda (2) and Gambia (1). The Case Fatality Rate (CFR) was 3.0% (Confirmed and Probable cases), and 3.3% (confirmed cases only).
- Cameroon, Central African Republic, Guinea declared outbreaks and YF Reactive Vaccination Campaigns (RVCs) were conducted reaching 5,335,552. In addition, 465,798 people were vaccinated in South Sudan in response a Dec. 2023 YF outbreak.

*\*Only confirmed and probable cases with known outcomes including in CFR estimation.*

Yellow Fever – Confirmed cases by region in 2024 as at 7<sup>th</sup> June, 2025

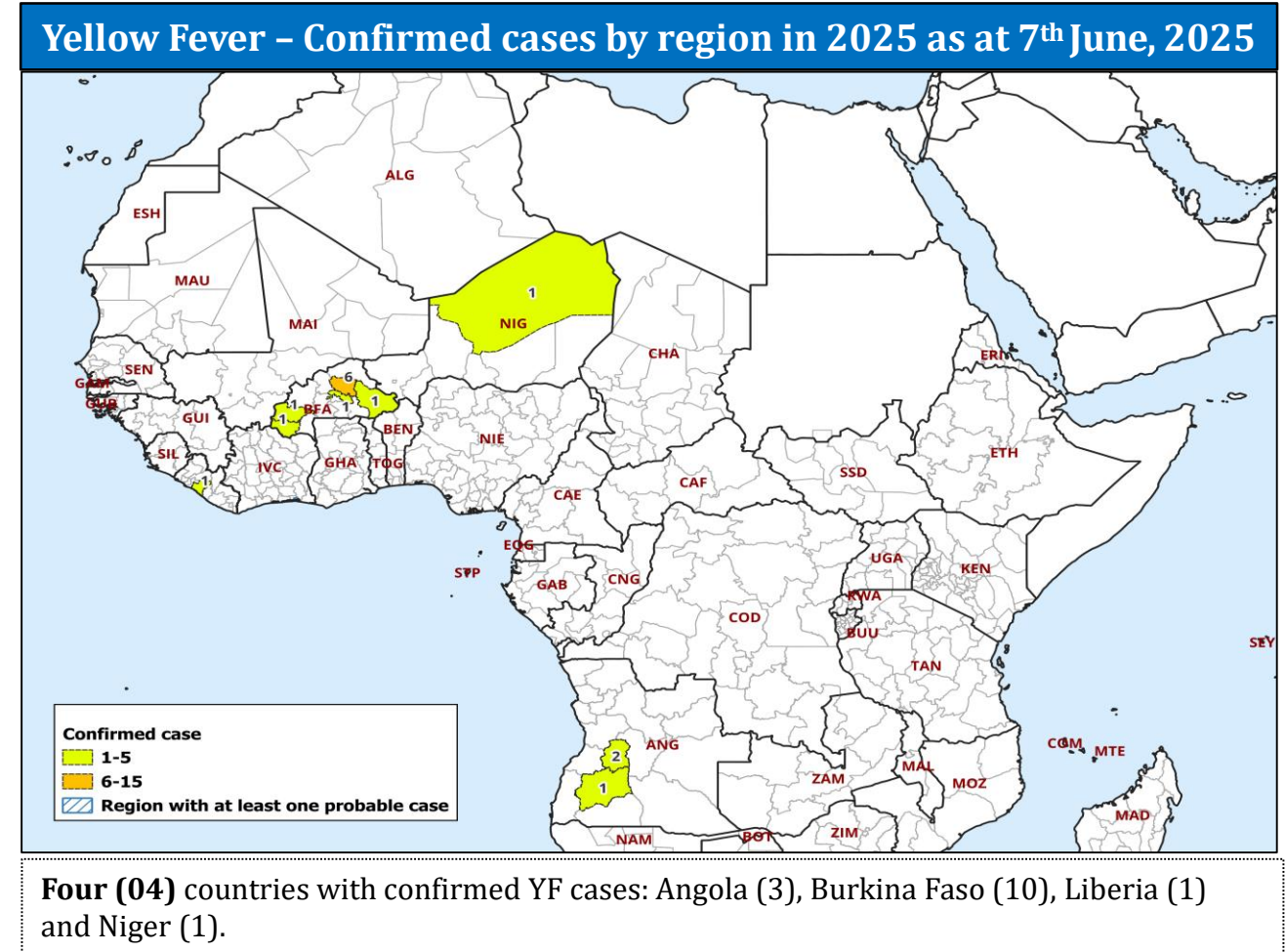


**Fourteen (14)** countries with confirmed YF cases: Angola (4), Burkina Faso (18), Cameroon (20), Central African Republic (4), Chad (11), Congo Rep. of (5), Democratic Rep. of (1), Gabon (7), Gambia (2), Ghana (7), Guinea (6), Mali (1), Nigeria (36) and Uganda (29). \* *Eight (8) cases from Uganda could not be mapped due to missing geolocation information.*

# Epidemiology of Yellow Fever in the African Region, 2025

- 16 YF confirmed and probable cases from five (5) countries: Angola (3), Burkina Faso (10, one-death), Liberia (1), Cote d'Ivoire (1) and Niger (1).
- One (1) death was reported in a confirmed case in Burkina Faso. The Case Fatality Rate (CFR) was 7.0% (Confirmed cases).
- 365,044 - vaccinated through the RVCs in response to the 2024 YF outbreaks in Gueckedou district, Guinea. Cameroon and Central African Republic plan RVCs in response to 2024 outbreaks, and Burkina Faso in response to the 2024-2025 outbreak.

*\*Only confirmed and probable cases with known outcomes including in CFR estimation.*

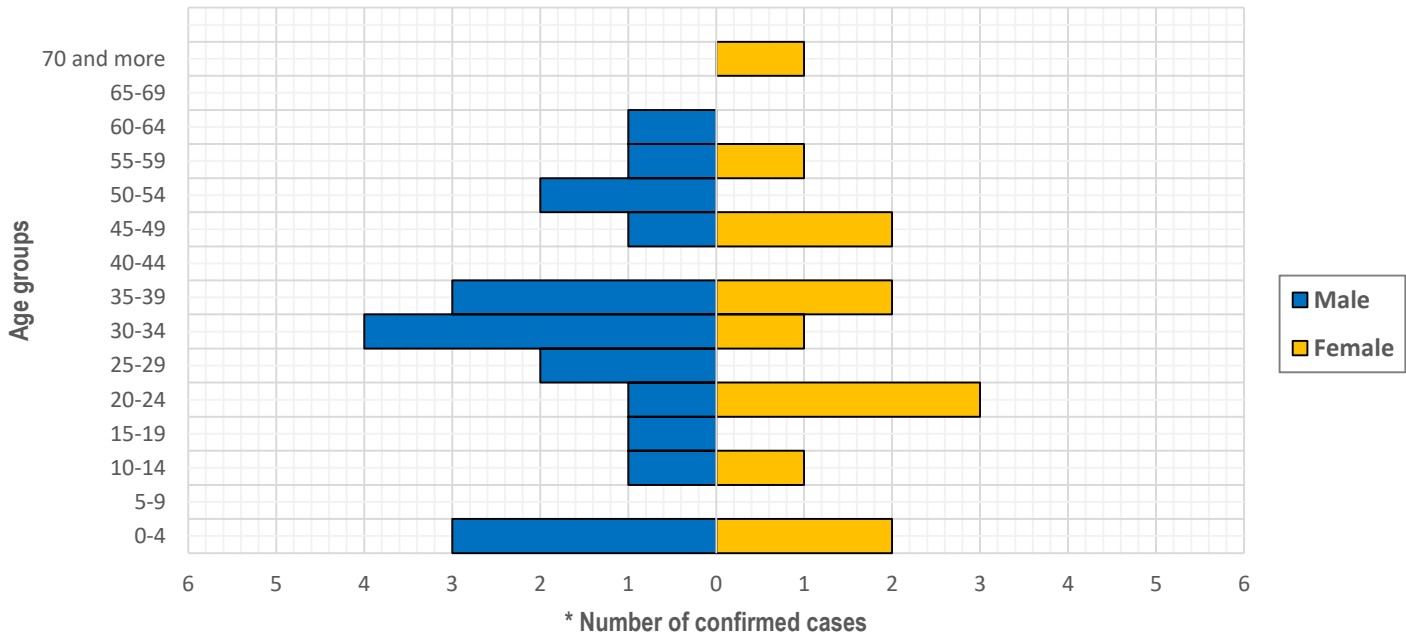


# Yellow Fever Cases in 2024 and 2025: Age and sex distribution amongst confirmed cases

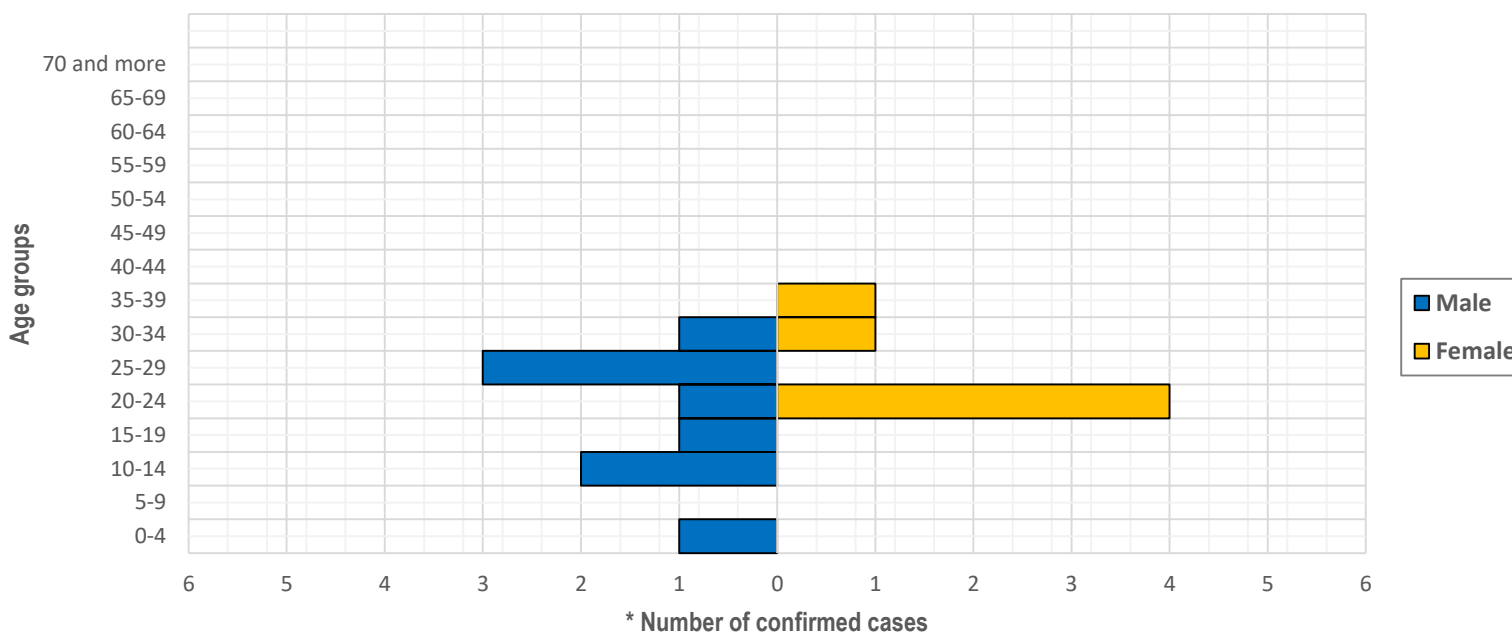
Probable cases: 6; Confirmed cases: 40; Deaths: 02; CFR: 6.3%

Probable cases: 01; Confirmed cases: 15; Deaths: 01; CFR: 7.1%

Number of confirmed cases by age groups, Epi-Week 23, 2024



Number of confirmed cases by age groups, Epi-Week 23, 2025



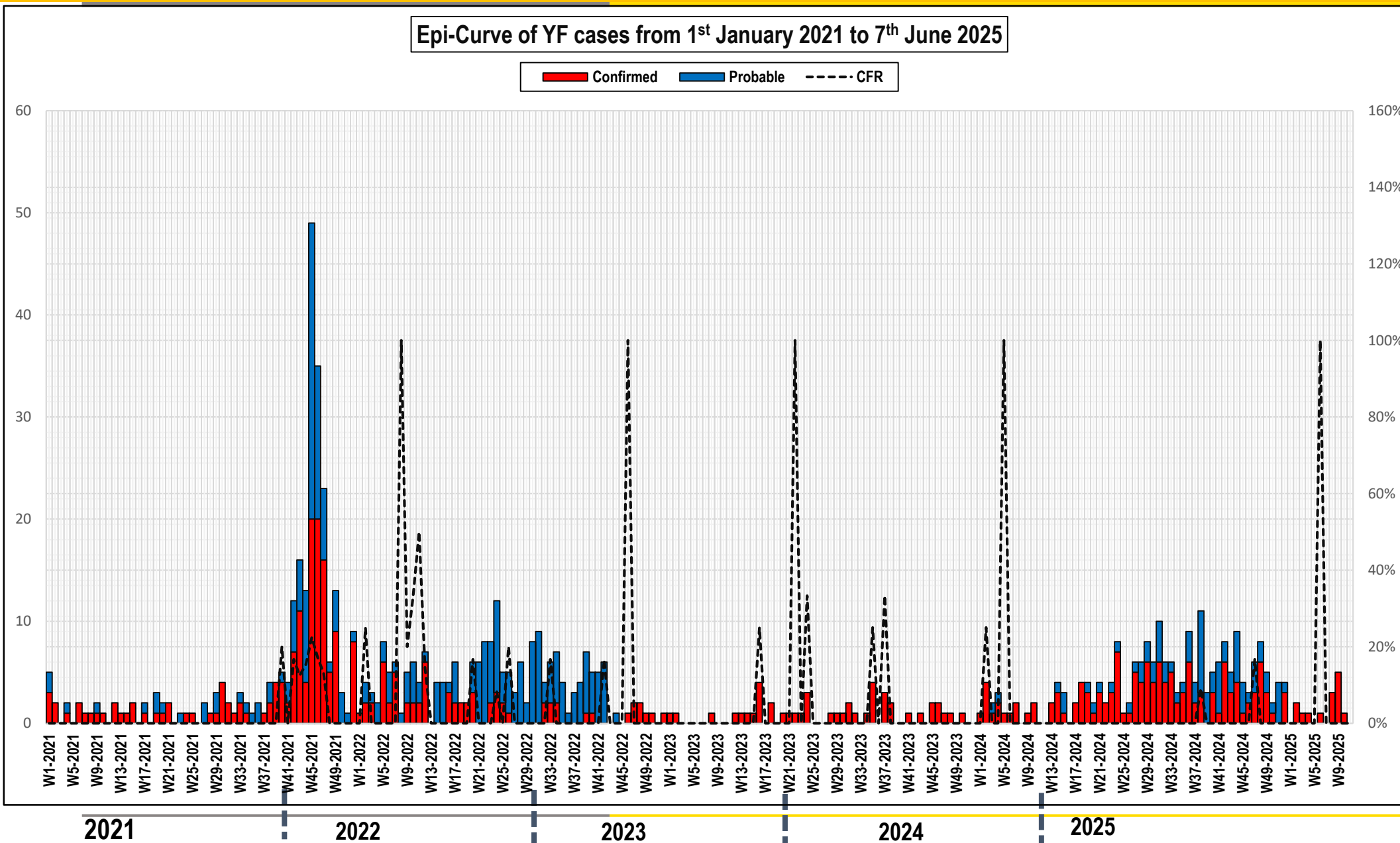
- Male to female ratio, approximately **1.5**.
- About **15%** of confirmed cases are aged bellow 10 years; **67%** between a group of age 10-49 and **18%** more than 49 years.

- Male to female ratio, approximately **1.5**.
- About **7%** of confirmed cases are aged bellow 10 years; and **93%** between a group of age 10-49.

\*(N=33)

\* 7 out of 40 confirmed cases not included due to missing age/ sex data. (N=33)

# Epi-Curve of Yellow Fever Cases, 2021 to 2025



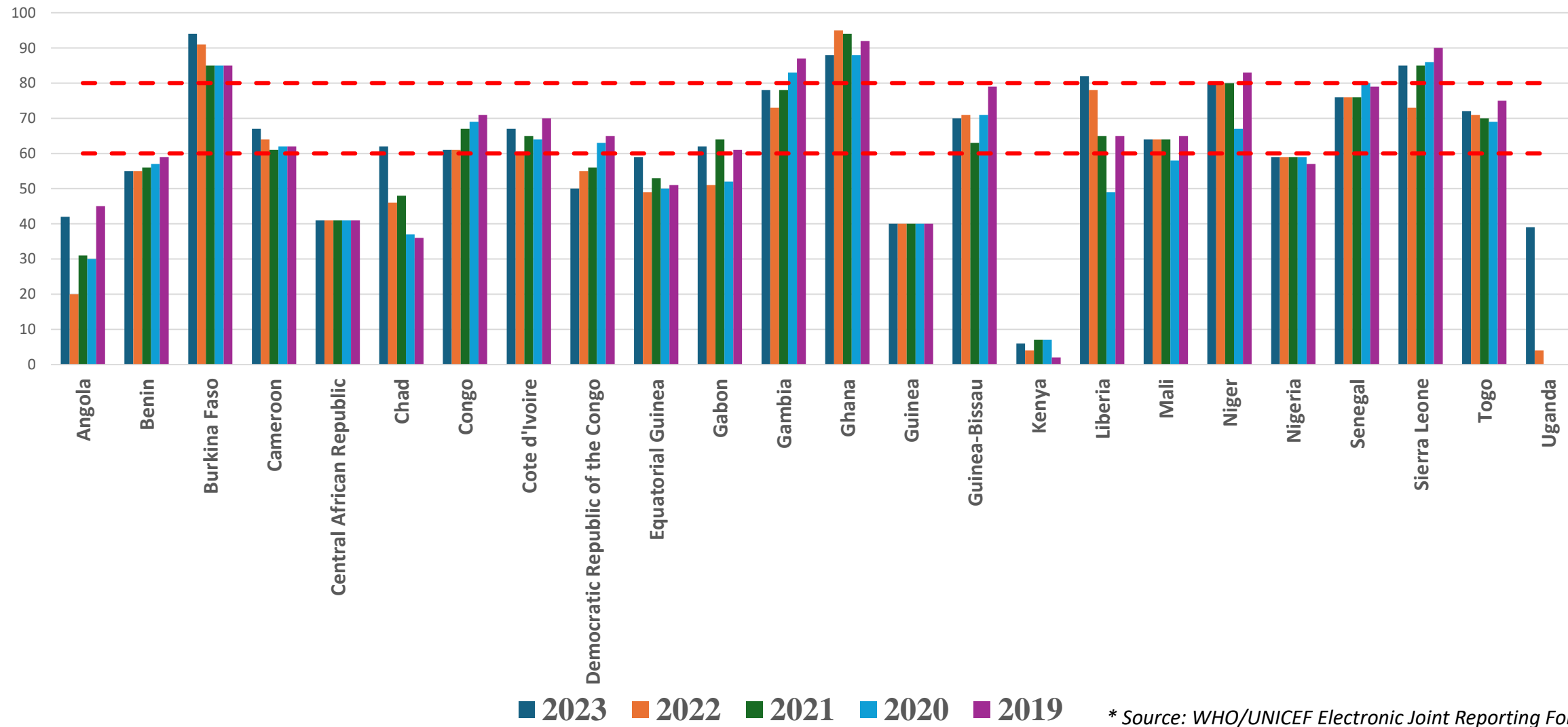
- A resurgence of epidemics in 2021 and 2022.
- RVCs were conducted in response to outbreaks in addition to ongoing PMVCs leading to a decrease in cases in 2023.
- A surge in cases was observed in 2024 especially in 6 countries.



# **Risk Factors for Yellow Fever Outbreaks in the African Region**

# Low Vaccination Coverage

YF coverage by country, 2019-2023



- 8 (33%) out of 24 countries that submitted data on eJRF achieved at least 80% coverage at least once in the last five years.

\* Source: WHO/UNICEF Electronic Joint Reporting Form (eJRF). Data as of 15 June 2025

# Population Movements, Urbanization, and Environmental Factors

---

- Population movements including migration displacement due to conflict
- Poorly-planned urbanization with congestion and increased mosquito breeding sites
- Environmental factors and climate variability increasing mosquito population density.



# Weak Surveillance and Delayed Response

---

- Delay in final case classification
- Delay in epidemiologic investigations and risk assessment
- Delay in submission of vaccine request to the ICG
- Delay in implementation of RVCs
- Delay in conducting the Post-Campaign Coverage Surveys (PCCS)

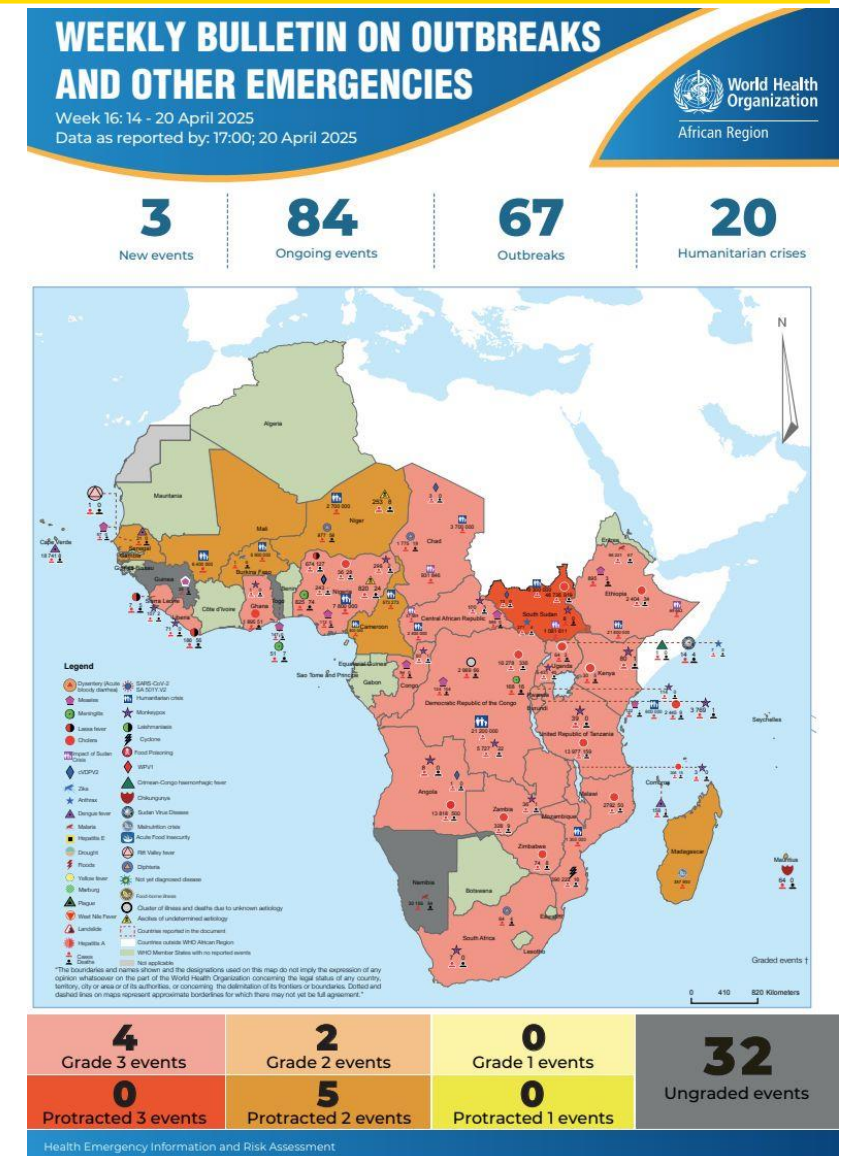
# Weak Health Systems

- Limited financial resources for operations
- Inadequate human resources
- Dealing with multiple health and humanitarian emergencies

***Ebola, Marburg, Mpox, Cholera, Flood emergencies, etc.***

**2023 (112 emergencies); 2024 (145 emergencies); 2025 (as of 20 April, 84 ongoing events, 67 outbreaks and 20 humanitarian crises)**

Most health personnel are sometimes repurposed to support other emergencies



Source: AFRO-EPR

# Thank you