

Multi-country outbreak of cholera



Epidemiological Update n. 33, published 27 January 2026¹

Cases – 614 828
Since Jan. 2025

Deaths – 7 598
Since Jan. 2025

Countries affected – 33
Since Jan. 2025

Population at risk
1 billion

Global risk –
Very high

In this edition:

- [Overview](#)
- [Global epidemiological update](#)
- [WHO regional overviews](#)
- [Focus on selected subregions and countries](#)

Overview

Data as of 28 December 2025

- In December 2025 (epidemiological weeks 49 to 52) a total of 17 327 new cholera and acute watery diarrhoea (AWD) cases were reported from 16 countries, territories and areas (hereafter countries) across three WHO regions, showing a 25% decrease from November. In this period, 137 cholera-related deaths were reported globally, a 16% decrease from the previous month.
- Cholera cases and deaths in December 2025 were 65% and 74% lower than in December 2024 (48 967 cases and 521 deaths across 25 countries).
- From 1 January to 28 December 2025, a cumulative total of 614 828 cholera cases and 7598 deaths were reported from 33 countries across five WHO regions, with the Eastern Mediterranean Region recording the highest numbers, followed by the African Region, the South-East Asia Region, the Region of the Americas, and the Western Pacific Region. No cases were reported from the European Region during this period.
- In recent years, conflict, mass displacement, disasters from natural hazards, and climate change have intensified outbreaks, particularly in rural and flood-affected areas, where poor infrastructure and limited healthcare access delay treatment. These cross-border factors have made cholera outbreaks increasingly complex and harder to control.
- The data presented here should be interpreted with caution. Potential underreporting and reporting delays may affect timeliness and accuracy, while variations in surveillance systems, standard case definitions, and laboratory capacities can limit direct comparability among countries. These factors also influence the global case fatality rate (CFR), requiring careful examination. Unless otherwise specified, the term 'cholera cases' includes both suspected and confirmed cases. Data in this report may be adjusted retrospectively as more information becomes available. For the latest data, please consult WHO's [Global Cholera and AWD Dashboard](#).

¹ Starting January 2026, WHO is transitioning the Monthly Cholera Situation Report to a Monthly Cholera Epidemiological Update. The update retains the existing numbering sequence, with the first edition issued as #33, succeeding Situation Report #32.

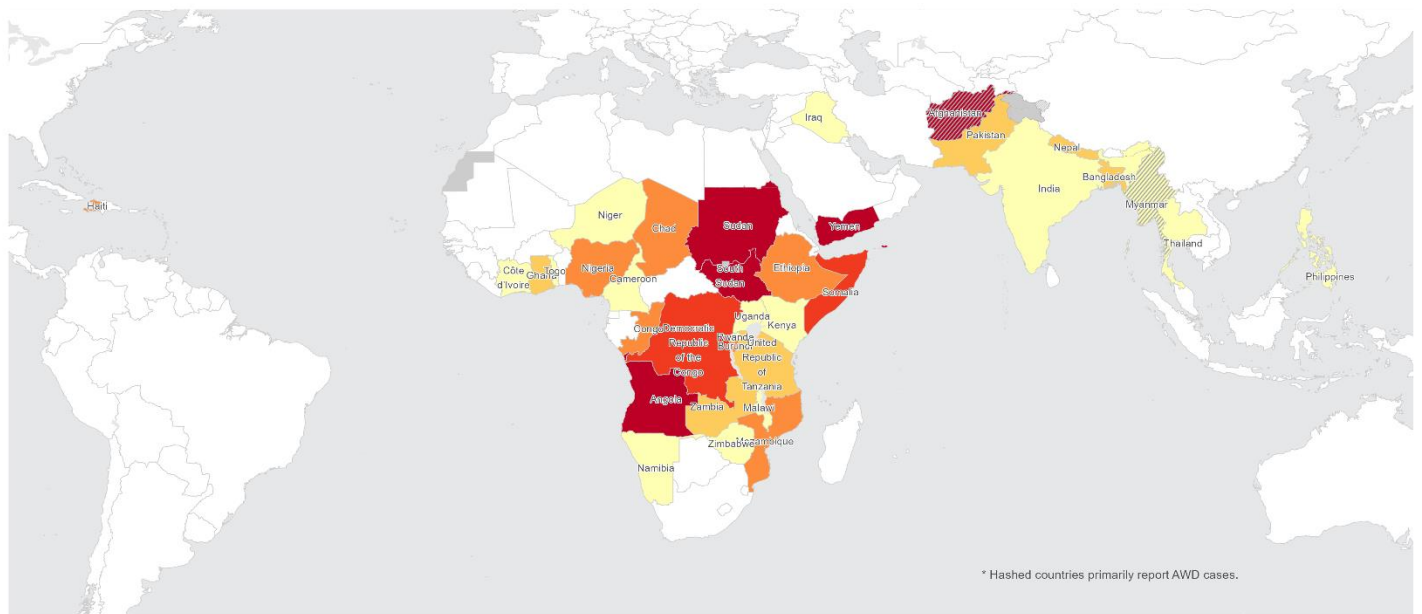
Global epidemiological update

In December 2025, (epidemiological weeks 49 to 52), a total of 17 327 new cholera and AWD cases were reported from 16 countries across three WHO regions, showing a 25% decrease from the previous month. The Eastern Mediterranean Region (9198 cases; five countries) reported the highest number of cases, followed by the African Region (8062 cases, 10 countries), and the South-East Asia Region (67 cases, one country). No cases were reported from the Western Pacific Region or the Region of the Americas.

During the same period, 137 cholera-related deaths were reported, representing a 16% decrease as compared to November 2025. The highest number of deaths was recorded in the African Region (132 deaths; 5 countries), followed by the Eastern Mediterranean Region (5 deaths; two countries). No deaths were reported from the South-East Asia Region, the Western Pacific Region, or the Region of the Americas.

From 1 January to 28 December 2025, a cumulative total of 614 828 cholera and AWD cases and 7598 deaths were reported globally across five WHO regions. The Eastern Mediterranean Region reported the highest case count (359 052 cases; six countries), followed by the African Region (242 344 cases, 22 countries), the South-East Asia Region (6628 cases; five countries), the Region of the Americas (5353 cases; one country), and the Western Pacific Region (1451 cases; one country). The African Region reported the highest number of deaths (5315 deaths), followed by the Eastern Mediterranean Region (2167 deaths), the Region of the Americas (78 deaths), the Western Pacific Region (27 deaths), and the South-East Asia Region (11 deaths).

Figure 1. Cholera and acute watery diarrhoea (AWD) cases per 100 000, 1 January to 28 December 2025



Cases per 100k 1 - <5 5 - <10 10 - <50 50 - <100 100+ Not applicable No data



The designations employed and the presentation of the material in this publication do not imply the expression of any opinion whatsoever on the part of WHO concerning the legal status of any country, territory, city or area or of its authorities, or concerning the delimitation of its frontiers or boundaries. Dotted and dashed lines on maps represent approximate border lines for which there may not yet be full agreement.

Data Source: World Health Organization
Map Production: WHO Health Emergencies Programme
© WHO 2025. All rights reserved.

Table 1. Reported cholera and AWD cases and deaths by WHO Region, as of 28 December 2025

Region	Country area territory	1 January to 28 December 2025				Last 28 days				
		Cases	Deaths	CFR (%)	Cases per 100 000	Cases	Deaths	CFR (%)	Monthly cases % change	Monthly deaths % change
African Region	Angola	36 293	895	2.5	100	797	15	1.9	-59	7
	Burundi	3522	16	0.5	27	800	5	0.6	149	400
	Cameroon [§]	3	0	0.0	0	-	-	-	-	-
	Chad [§]	2979	167	5.6	15	-	-	-	-	-
	Congo [§]	822	67	8.2	14	-	-	-	-	-
	Côte d'Ivoire [§]	503	20	4.0	2	-	-	-	-	-
	Democratic Republic of the Congo	71 147	2071	2.9	59	4722	89	1.9	9	-9
	Ethiopia	8503	84	1.0	12	57	0	0.0	-80	-
	Ghana [§]	2562	14	0.5	8	-	-	-	-	-
	Kenya	700	26	3.7	1	23	0	0.0	-44	-
	Malawi	121	2	1.7	1	12	0	0.0	-	-
	Mozambique	5801	60	1.0	20	1046	20	1.9	607	567
	Namibia	93	1	1.1	3	43	0	0.0	126	-
	Nigeria [§]	22 196	505	2.3	10	-	-	-	-	-
	Rwanda [§]	313	0	0.0	2	-	-	-	-	-
	South Sudan	80 431	1286	1.6	649	517	3	0.6	-42	-62
	Togo [§]	164	4	2.4	2	-	-	-	-	-
	Uganda [§]	255	0	0.0	1	-	-	-	-	-
	United Republic of Tanzania [§]	4261	58	1.4	7	-	-	-	-	-
Zambia	1106	18	1.6	6	45	0	0.0	-69	-	
Zimbabwe [§]	569	21	3.7	4	-	-	-	-	-	
Eastern Mediterranean Region	Afghanistan**	164 820	80	<0.01	504	6601	3	0.0	-31	-25
	Pakistan	19 017	0	0.0	8	704	0	0.0	-19	-
	Somalia	9003	9	0.1	55	309	0	0.0	-3	-
	Sudan	72 716	1830	2.5	173	63	0	0.0	-78	-
	Yemen [‡]	93 496	248	0.3	277	1521	2	0.1	-53	0
Region of the Americas	Haiti [§]	5353	78	1.5	46	-	-	-	-	-
South-East Asia Region	Bangladesh (Cox's Bazar) [§]	67	0	0.0	8	-	-	-	-	-
	India [#]	2267	11	0.5	0	-	-	-	-	-
	Myanmar**	2390	0	0.0	4	67	0	0.0	97	-
	Nepal [§]	1899	0	0.0	7	-	-	-	-	-
	Thailand [§]	5	0	0.0	0	-	-	-	-	-
Western Pacific Region	Philippines [§]	1451	27	1.9	1	-	-	-	-	-

* Case and death numbers presented are not directly comparable due to differences in case definitions, reporting systems and surveillance capacity. All data are subject to verification and change due to data availability and accessibility. Respective figures and numbers will be updated as more information becomes available. The data in Table 1 includes suspected, rapid diagnostic test (RDT)-positive, and culture-confirmed cholera cases. As multiple countries report only total data on deaths, the reported CFR is calculated throughout based on the total number of deaths reported. The Global Task Force on Cholera Control (GTFCC) recommends that CFR be calculated using only health facility deaths, with the number of community deaths reported separately.

** Afghanistan and Myanmar report AWD cases.

*** The reported number of suspected cholera and AWD cases is based on the available [Public Health Bulletin published by the National Institute of Health of Pakistan](#).

[‡] Includes all reported suspected cholera and AWD cases from Yemen.

[§] Countries which did not report cholera cases between 1 and 28 December 2025

[#] Among the total of 2267 cases reported from India, 130 cases were confirmed.

WHO regional overviews

African Region

In December 2025, the African Region reported 8062 new cholera cases across 10 countries, marking a 4% decrease compared with November. The highest number of cases were reported from the Democratic Republic of the Congo (4722), Mozambique (1046), and Burundi (800). Additionally, there were 132 cholera-related deaths, a 9% decrease compared with the previous month. The highest numbers of deaths were reported from the Democratic Republic of the Congo (89), Mozambique (20), and Angola (15).

From 1 January to 28 December 2025, a total of 242 344 cholera cases were reported across 22 countries in the African Region. The highest number of cases were reported from South Sudan (80 431), the Democratic Republic of the Congo (71 147), and Angola (36 293). During the same period, a total of 5315 deaths were reported from 18 countries. The highest numbers of deaths were reported from the Democratic Republic of the Congo (2071), South Sudan (1286), and Angola (895).

Eastern Mediterranean Region

In December 2025, the Eastern Mediterranean Region reported 9198 new cholera and AWD cases across five countries, marking a 35% decrease compared with November. The highest number of cases were reported from Afghanistan (6601), Yemen (1521), and Pakistan (704). Additionally, there were reported five deaths, a 62% decrease compared with the previous month. Those deaths were reported from Afghanistan (3) and Yemen (2).

From 1 January 2025 to 28 December 2025, a total of 359 052 cholera and AWD cases were reported across six countries in the Eastern Mediterranean Region. The highest numbers of cases were reported from Afghanistan (164 820), Yemen (93 496), and Sudan (72 716). During the same period, a total of 2167 deaths were reported from four countries. The highest numbers of deaths were reported from Sudan (1830), Yemen (248), and Afghanistan (80).

Region of the Americas

In December 2025, no new cases or deaths were reported from the Region of the Americas. From 1 January 2025 to 28 December 2025, a total of 5353 cholera cases and 78 deaths were reported from Haiti.

South-East Asia Region

In December 2025, the South-East Asia Region reported 67 new cholera and AWD cases in Myanmar, marking an 85% decrease compared with November. There were no deaths reported during this period.

From 1 January 2025 to 28 December 2025, a total of 6628 cholera and AWD cases were reported across five countries in the South-East Asia Region. The highest number of cases were reported from Myanmar (2390), India (2267), and Nepal (1899). During the same period, a total of 11 deaths were reported from India.

Western Pacific Region

In December 2025, no new cases or deaths were reported from the Western Pacific Region. From 1 January to 28 December 2025, a total of 1451 cholera cases and 27 deaths were reported from the Philippines.

Figure 2. Global cholera and AWD cases by week, 1 January 2024 to 28 December 2025

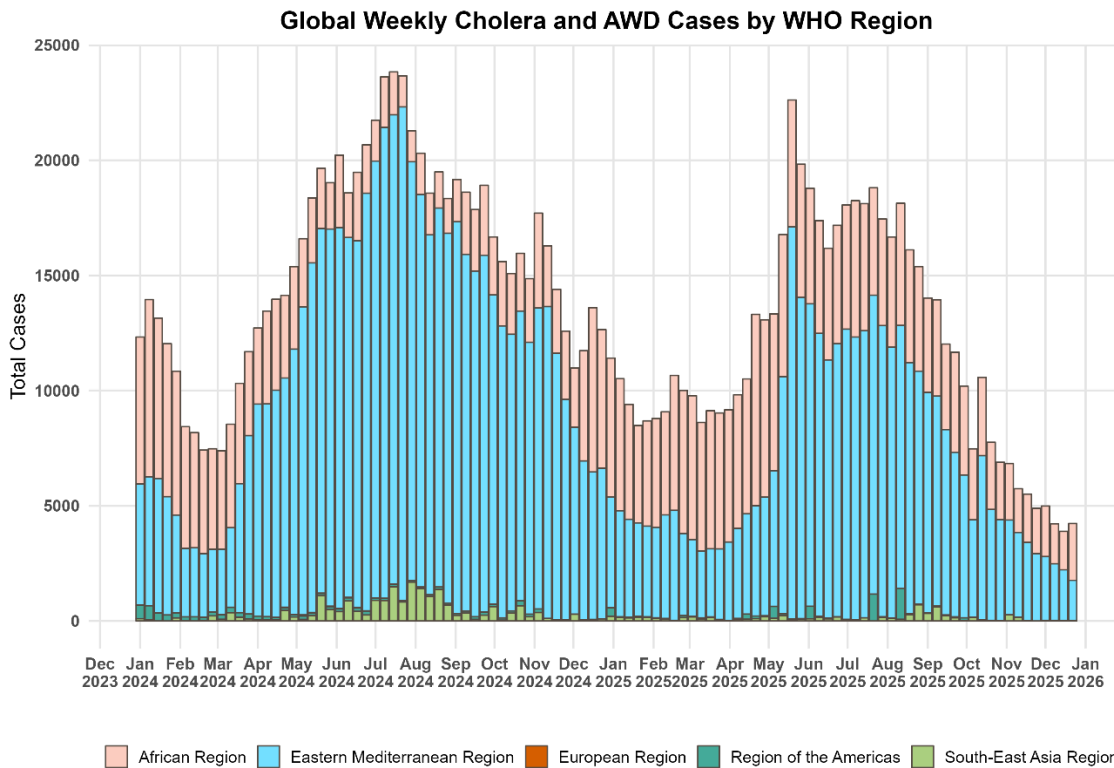
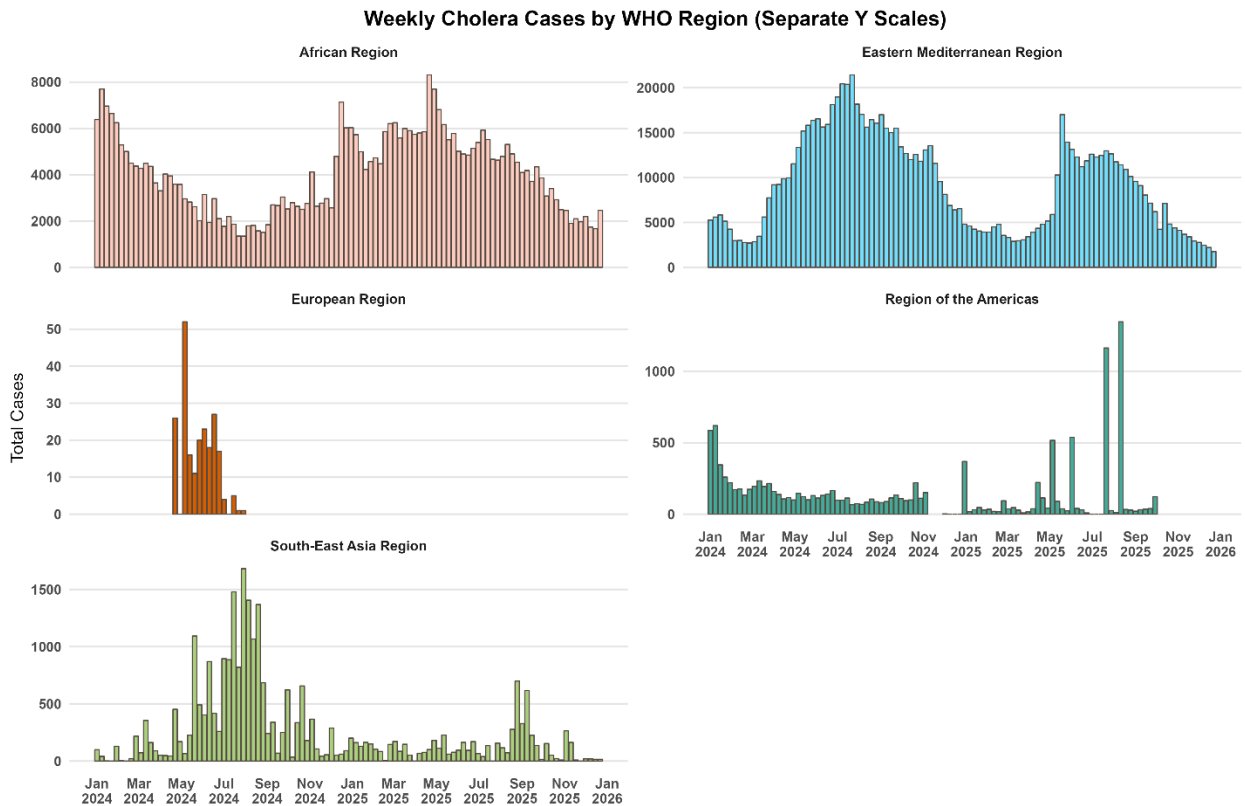


Figure 3. Cholera and AWD cases by WHO Region (separate Y scales), 1 January 2024 to 28 December 2025



*The epi curve of the Western Pacific Region is not included due to limited available weekly data.

**Spikes in the Region of the Americas are due to batch reporting.

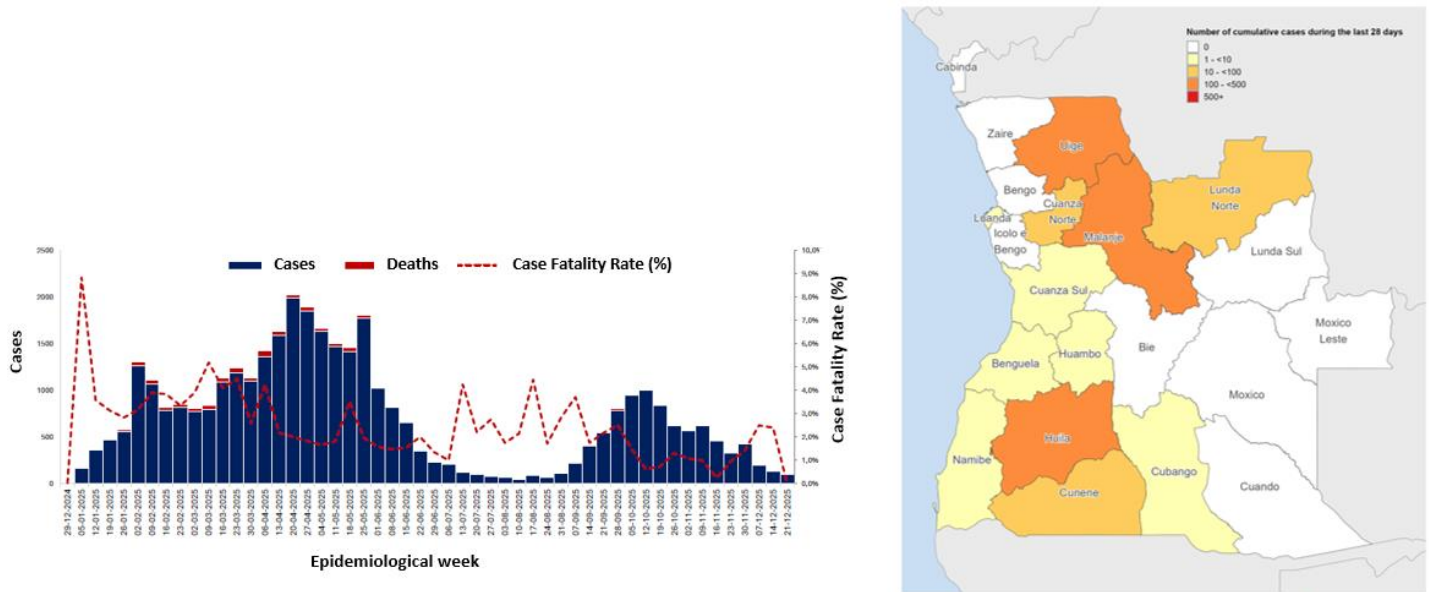
Focus on selected subregions and countries

Angola

Between 1 January and 28 December 2025, Angola reported a total of 36 293 cases and 895 deaths (including 404 community deaths), with an overall CFR of 2.5% and a facility CFR of 1.4%. Cases were reported from 18 of 21 provinces, with four provinces accounting for 49% of cases: Luanda (7047 cases), Benguela (4731), Bengo (3075), and Cuanza Sul (2884).

In December 2025, Angola reported 797 new cholera cases and 15 associated deaths with an overall CFR of 1.9%, marking a 59% decrease in cases and a 7% increase in deaths compared to the previous month. In the last four weeks, 92% of the cases were reported in Huila (41%), Uige (38%) and Malanje (13%).

Figure 4: Angola: A) Weekly cases, deaths, and CFR and B) geographical distribution of cases as of 28 December 2025.



The designations employed and the presentation of the material in this publication do not imply the expression of any opinion whatsoever on the part of WHO concerning the legal status of any country, territory, city, or area or of its authorities, or concerning the delimitation of its frontiers or boundaries. Dotted and dashed lines on maps represent approximate border lines for which there may not yet be full agreement.

Data Source: World Health Organization, Ministry of Health Angola
Map Production: WHO Health Emergencies Programme



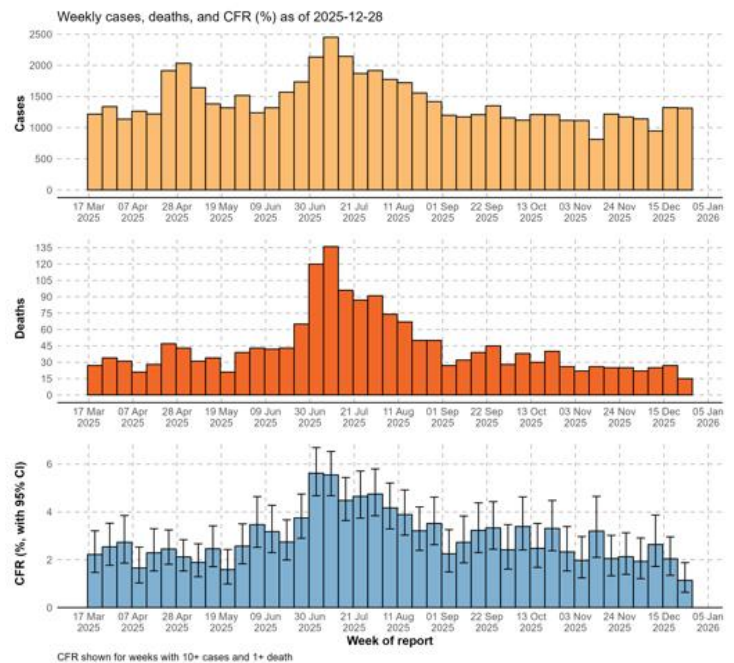
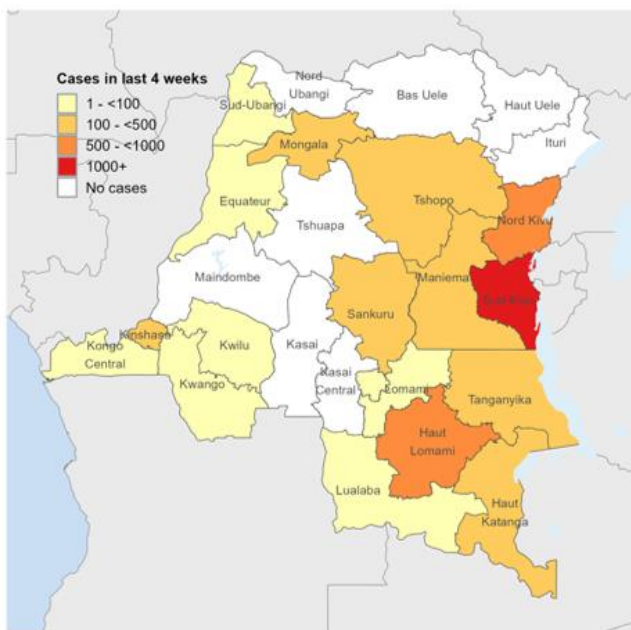
Democratic Republic of the Congo

Between 1 January and 28 December 2025, the Democratic Republic of the Congo reported a total of 71 147 cases and 2071 deaths, with an overall CFR of 2.9%. Cumulatively, 21 of the country's 26 provinces have been affected. This represents the largest outbreak since 1994, during which 58 057 cases and 4181 deaths were reported, although direct comparison should be interpreted with caution given substantial differences in surveillance sensitivity, case definitions, and reporting completeness between the two periods.

In December 2025, the Democratic Republic of the Congo reported 4722 new cholera cases and 89 associated deaths with a CFR of 1.9%, marking a 9% increase in cases and 9% decrease in deaths compared to the previous month.

In the last four weeks, 81% of cases were reported from Sud-Kivu (28%), Nord-Kivu (21%), Haut Lomami (13%), Tanganyika (10%), and Kinshasa (9%). Most cholera cases and deaths are reported in the country's eastern provinces, where security constraints significantly limit humanitarian access to populations in affected cholera hotspots. In addition, attacks on the health system have undermined the delivery of quality care, resulting in inadequate conditions for case management, as well as limited access to safely managed drinking water services and adequate sanitation facilities, further exacerbating cholera transmission.

Figure 5: Democratic Republic of the Congo: Distribution of cumulative cases by province (left) and weekly case, death, and CFR trends (right), as of 28 December 2025



The designations employed and the presentation of the material in this publication do not imply the expression of any opinion whatsoever on the part of WHO concerning the legal status of any country, territory, city, or area or of its authorities, or concerning the delimitation of its frontiers or boundaries. Dotted and dashed lines on maps represent approximate border lines for which there may not yet be full agreement.

Data Source: World Health Organization, Ministry of Health
Democratic Republic of the Congo
Map Production: World Health Organization



© WHO 2026, All rights reserved.

Sudan

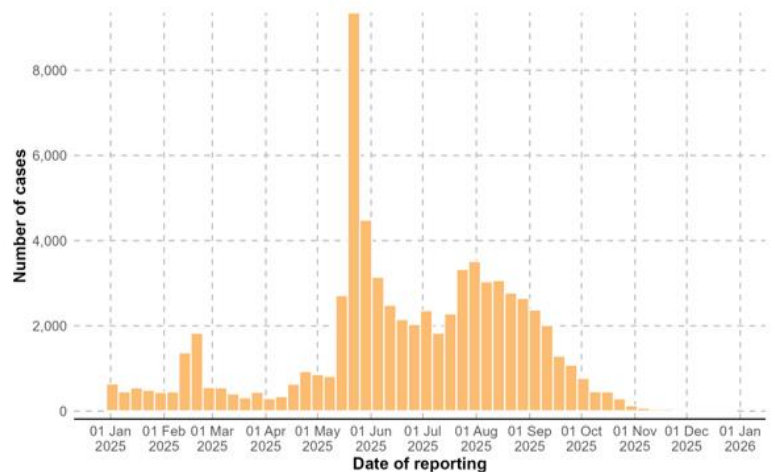
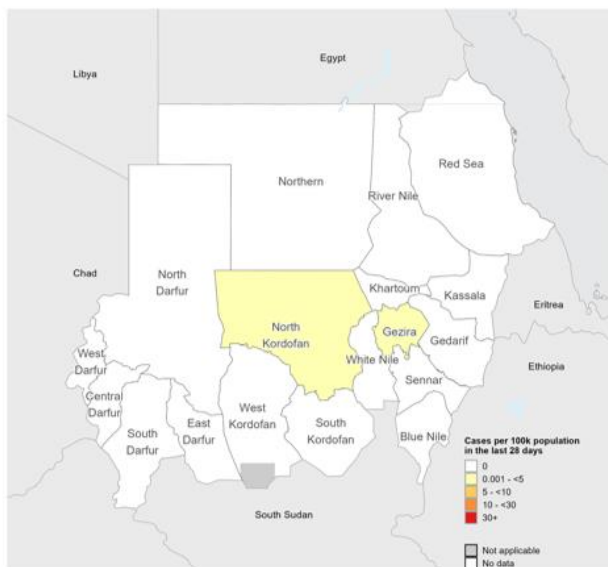
Between 1 January and 28 December 2025, Sudan reported a total of 72 716 cases and 1830 deaths, with an overall CFR of 2.5%.

Between 1 and 28 December 2025, Sudan reported 63 new cholera cases and 0 associated deaths, marking a 78% decrease in cases and a 100% decrease in deaths compared to the previous month.

Overall national trends are declining significantly since week 45 and no new localities have reported first cases in December. In the last four weeks, cases were reported in North Kordofan (56 cases) and Aj Jazirah (7 cases).

The Kordofan region remains affected by conflict with communication challenges and displacement, impacting basic water, sanitation and hygiene and contributing to further disruptions in health care access and potentially hindering case reporting. The Darfur region continues to report zero cases across all states. However, the situation remains of concern due to the ongoing conflict.

Figure 6: Sudan: Distribution of cumulative cases per 100 000 population by state in the last 28 days (left) and weekly case trend (right), as of 28 December 2025.



The designations employed and the presentation of the material in this publication do not imply the expression of any opinion whatsoever on the part of WHO concerning the legal status of any country, territory, city, or area or of its authorities, or concerning the delimitation of its frontiers or boundaries. Dotted and dashed lines on maps represent approximate border lines for which there may not yet be full agreement.

Data Source: World Health Organization, Federal Ministry of Health Sudan
Map Production: World Health Organization



Annex 1. Data, table, and figure notes

Caution must be taken when interpreting all data presented. Differences are to be expected between information products published by WHO, national public health authorities, and other sources using different inclusion criteria and different data cut-off times. While steps are taken to ensure accuracy and reliability, all data are subject to continuous verification and change. Case detection, case definitions, laboratory testing strategies, reporting practice, and lag times differ across countries/territories/areas. These factors, amongst others, influence the counts presented, with variable underestimation of the true case and death counts, and variable delays in reflecting these data at the global level.

'Countries' may refer to countries, territories, areas, or other jurisdictions of similar status. The designations employed, and the presentation of these materials do not imply the expression of any opinion whatsoever on the part of WHO concerning the legal status of any country, territory, or area or of its authorities, or concerning the delimitation of its frontiers or boundaries. Dotted and dashed lines on maps represent approximate border lines for which there may not yet be full agreement. Countries, territories, and areas are arranged under the administering WHO region. The mention of specific companies or of certain manufacturers' products does not imply that they are endorsed or recommended by WHO in preference to others of a similar nature that are not mentioned. Errors and omissions excepted; the names of proprietary products are distinguished by initial capital letters.

Annex 2. Technical guidance and other resources

General

- [Cholera fact sheet](#)
- [Ending Cholera, A Global Roadmap To 2030](#)
- [Global cholera strategic preparedness, readiness, and response plan 2023/24](#)
- [WHO's Call for urgent and collective action to fight cholera](#)
- [Disease outbreak news Cholera – Multi-country with a focus on countries experiencing current surges](#)
- [Global Task Force on Cholera Control \(GTFCC\)](#)
- [AFRO Weekly outbreaks and emergency bulletin](#)
- [WHO AFRO Cholera Dashboard](#)
- [Cholera upsurge \(2021-present\) web page](#)

Training

- GTFCC Laboratory training on [Sample collection and testing with Rapid Diagnostic Tests for cholera for health care workers](#) available in English, French, Portuguese and Arabic.
- GTFCC Laboratory [job aids and fact sheets](#) available in English, French, Portuguese and Arabic.
- GTFCC Cholera surveillance for health authorities as well as on cholera surveillance health care workers. These courses are available in [English and French](#).
- Countries are encouraged to periodically self-assess their cholera surveillance systems using the [GTFCC method to assess cholera surveillance](#) to identify key activities for strengthening surveillance in line with GTFCC recommendations.

Technical guidance

- [GTFCC fixed ORP interim guidance and planning](#)
- [Public health surveillance for cholera, Guidance document, 2024 including tools and job aids](#). These recommendations are available in English, French, Arabic and Portuguese.
- [Recommendations for reporting cholera to the regional and global levels, 2025](#)
GTFCC [updated recommendations for cholera reporting to the regional and global levels](#). This comes along with a [reporting template](#) in Excel. It is available in English, Arabic, French and Portuguese.