

# Using MPI for preparedness, response and recovery to health emergencies, including COVID-19

**World Health Organization (WHO)**



El futuro  
es de todos

Gobierno  
de Colombia

April 13, 2021



## Content

1

---

**Multidimensional  
Poverty Index**

2

---

**Vulnerability and  
Mobility Geovisor**

3

---

**DANE's contribution to  
the management of the  
Covid-19 crisis**

# Multidimensional Poverty Index



El futuro  
es de todos

Gobierno  
de Colombia





## Census-sourced multidimensional poverty measure NPHC 2018



### Educational conditions (0.2)

- Illiteracy (0.1)
- Low educational achievement (0.1)



### Childhood and youth conditions (0.2)

- Non-attendance at school (0.05)
- Academic lag (0.05)
- Barriers to accessing early childhood services (0.05)
- Child labor (0.05)



### Work (0.2)

- Informal work (0.1)
- Economic dependency rate (0.1)



### Health (0.2)

- No health insurance (0.1)
- Barriers to accessing health care given a need (0.1)



### Housing conditions and public services (0.2)

- No access to improved water source (0.04)
- Inadequate excretal disposal (0.04)
- Inadequate floor material (0.04)
- Inadequate wall material (0.04)
- Critical Overcrowding (0.04)

### MPI Composition:

5 dimensions

15 indicators

Deprivation threshold: 0,33

### Source of Information:

National Housing and Population Census 2018

# Multidimensional Poverty Geovisor

**DANE**

INFORMACIÓN PARA TODOS

[Comunicado de prensa](#)

[Tutorial](#)

Grupos por niveles de vulnerabilidad de fuente censal - información a nivel manzana

Departamento

BOLÍVAR

Municipio

CARTAGENA DE INDIAS

Capas disponibles

[Indice de pobreza multidimensional](#)

Activar



Transparencia



Altura



[Grupos por nivel de vulnerabilidad](#)

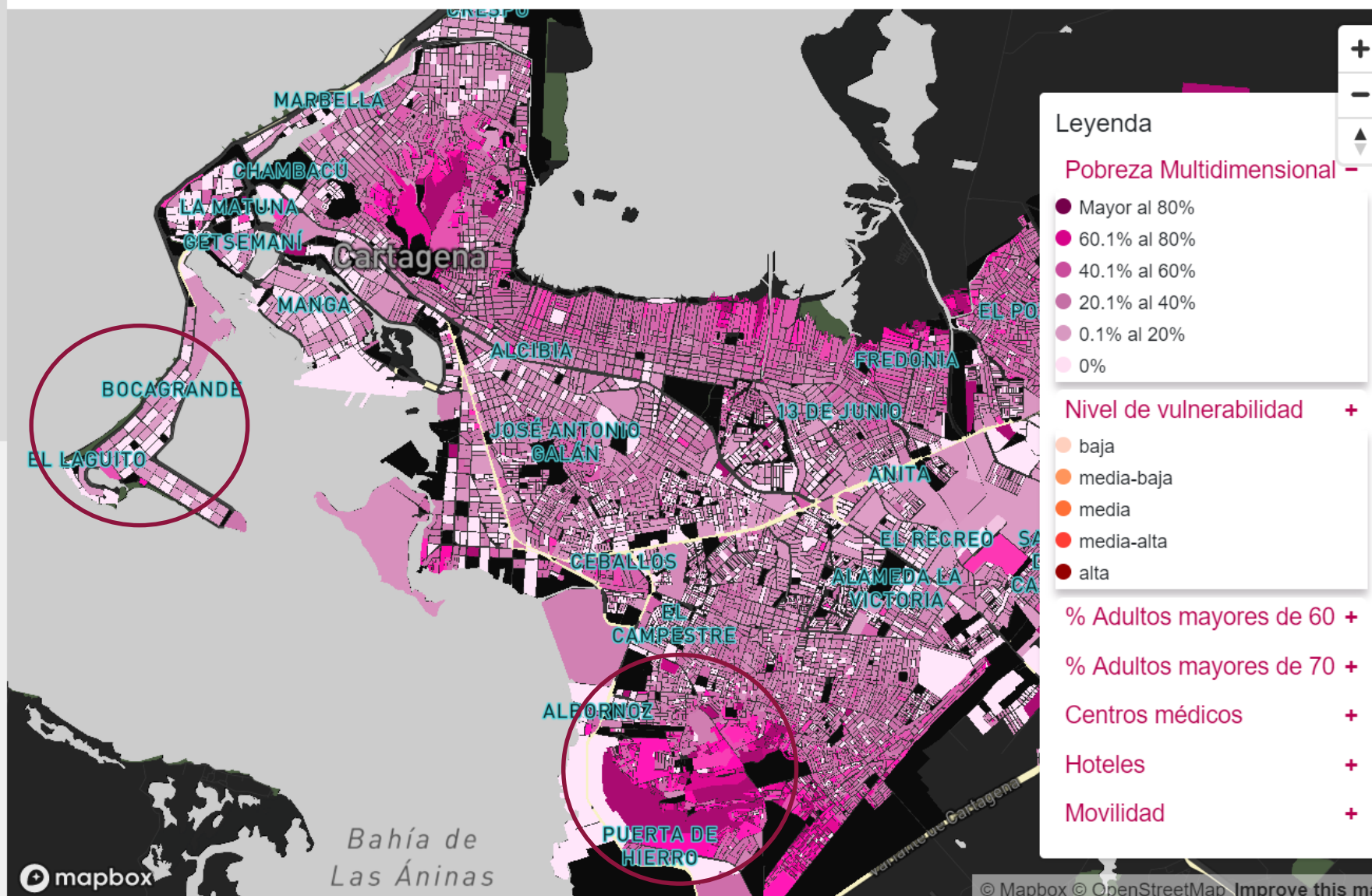
[% Adultos mayores de 60 años](#)

[% Adultos mayores de 70 años](#)

[Centros médicos](#)



Grupos por niveles de vulnerabilidad



# Vulnerability and mobility Geovisor



El futuro  
es de todos

Gobierno  
de Colombia



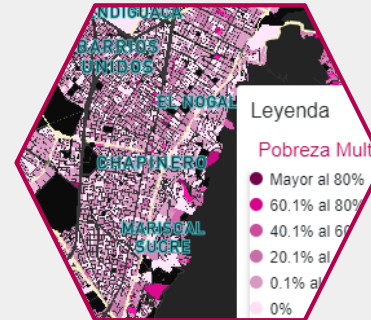


## Per block Vulnerability Geovisor

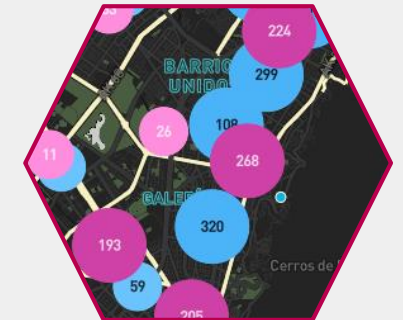


Geospatial information platform, in which you can identify the vulnerability of the environment, neighborhood or block, to the phenomenon of contagion by COVID-19

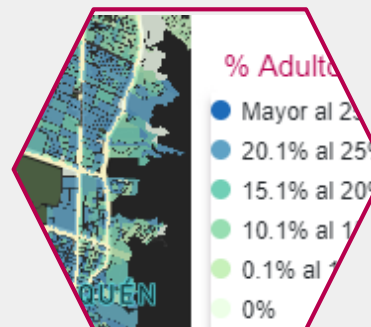
<https://geoportal.dane.gov.co/visor-vulnerabilidad/>



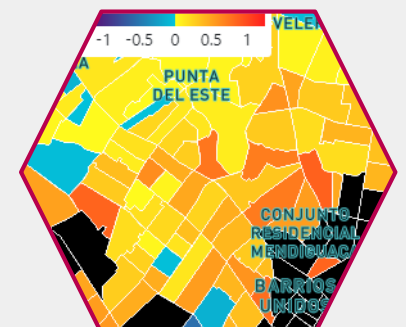
Multi dimensional  
Poverty Index



Number of facilities (medical  
centers and hotels)



Percentage of older adults

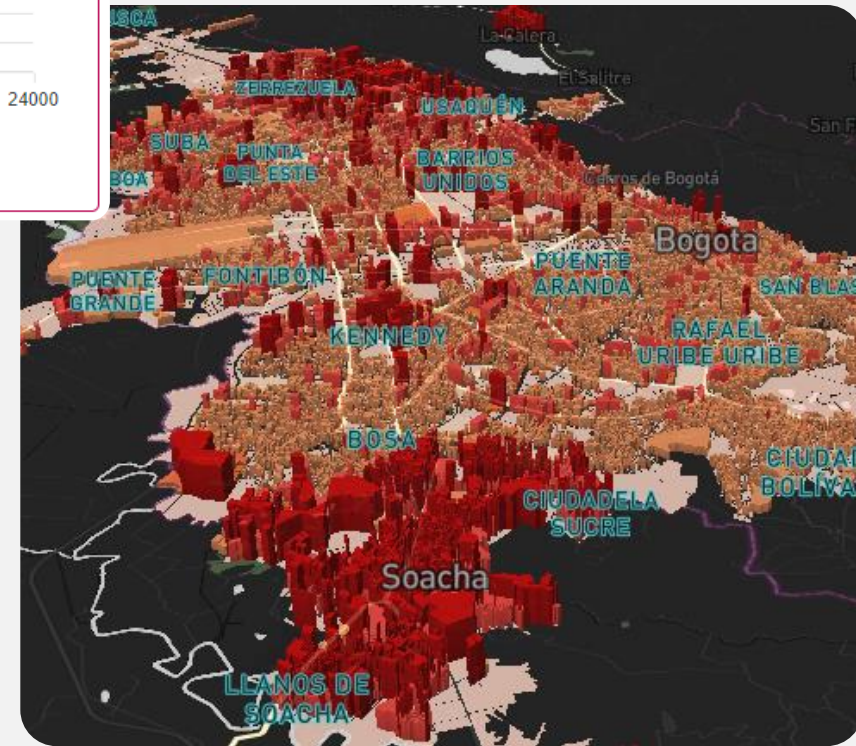
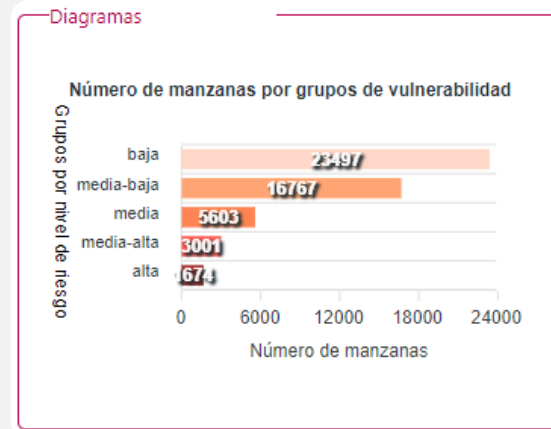


Mobility Index



## Geovisualization of vulnerability

- Groups by levels of vulnerability at the block level.
- Diagrams and filters by territorial levels.
- Enable layers, transparencies, and 3D views.
- Video tutorial, methodological note and shapefile download.





# **DANE's contribution to the management of the Covid-19 crisis**



**El futuro  
es de todos**

Gobierno  
de Colombia



## How has the NSO of Colombia contributed to the management of the Covid-19 crisis?

---

1

DANE is the institution in charge of the production of official statistics regarding births and deaths in Colombia

---

2

Mortality coding uses the automated cause of death coding system IRIS and follows the guidelines established by WHO/PAHO related to COVID-19.

---

3

Since the beginning of the pandemic\*, DANE has been publishing information – on a weekly basis- on mortality by: Covid-19 Confirmed and Suspected, Pneumonia and Influenza, disaggregated by age, sex, ethnicity, department and regions.

\* First Covid-19 death confirmed March 16, 2020, and suspected March 2, 2020.



## How has the NSO of Colombia contributed to the management of the Covid-19 crisis?

---

4

Performs and publishes mortality follow-up tables, calculates excess mortality for departments and regions. Calculates mortality rates by Covid-19 for departments and capital cities.

**[Follow-up Report - Deaths by COVID-19 \(dane.gov.co\)](https://dane.gov.co)**

---

5

With the Ministry of Health and Social Protection and the National Institute of Health, it carries out the reclassification process of Covid-19 mortality in Colombia.



[www.dane.gov.co](http://www.dane.gov.co)



El futuro  
es de todos

Gobierno  
de Colombia