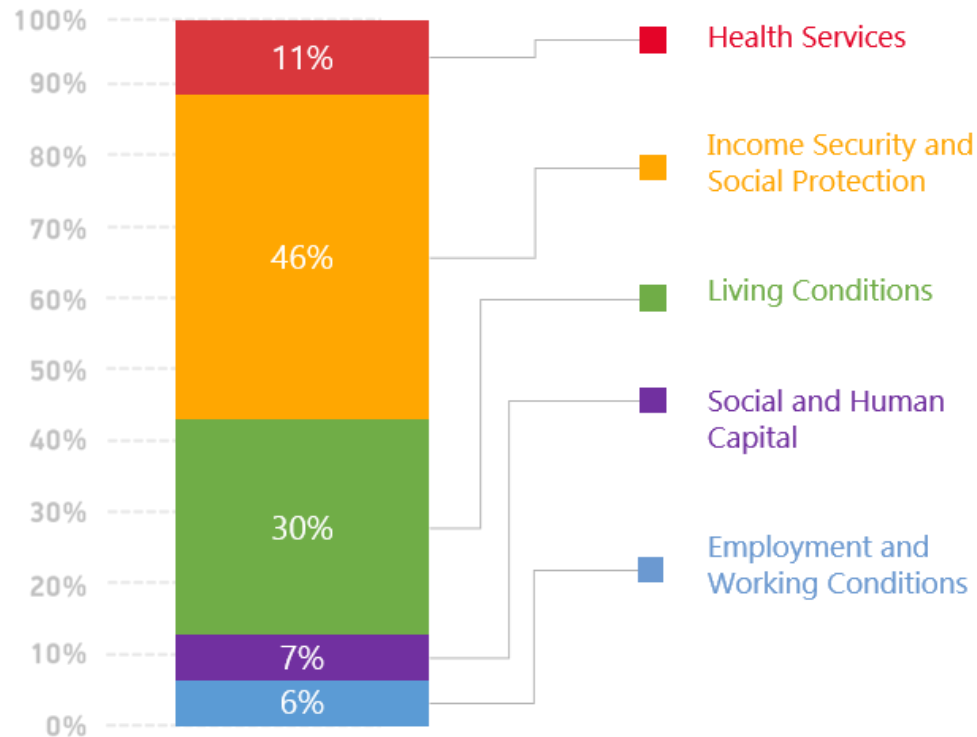


# Insecurity in 5 'essential conditions' are driving health inequity in Europe



Relative contribution to the mental health gap from differences in 5 factors, controlling for age & sex (based on analysis of EQLS 2003-2016)

Source: Health Equity Status Report, WHO, 2019



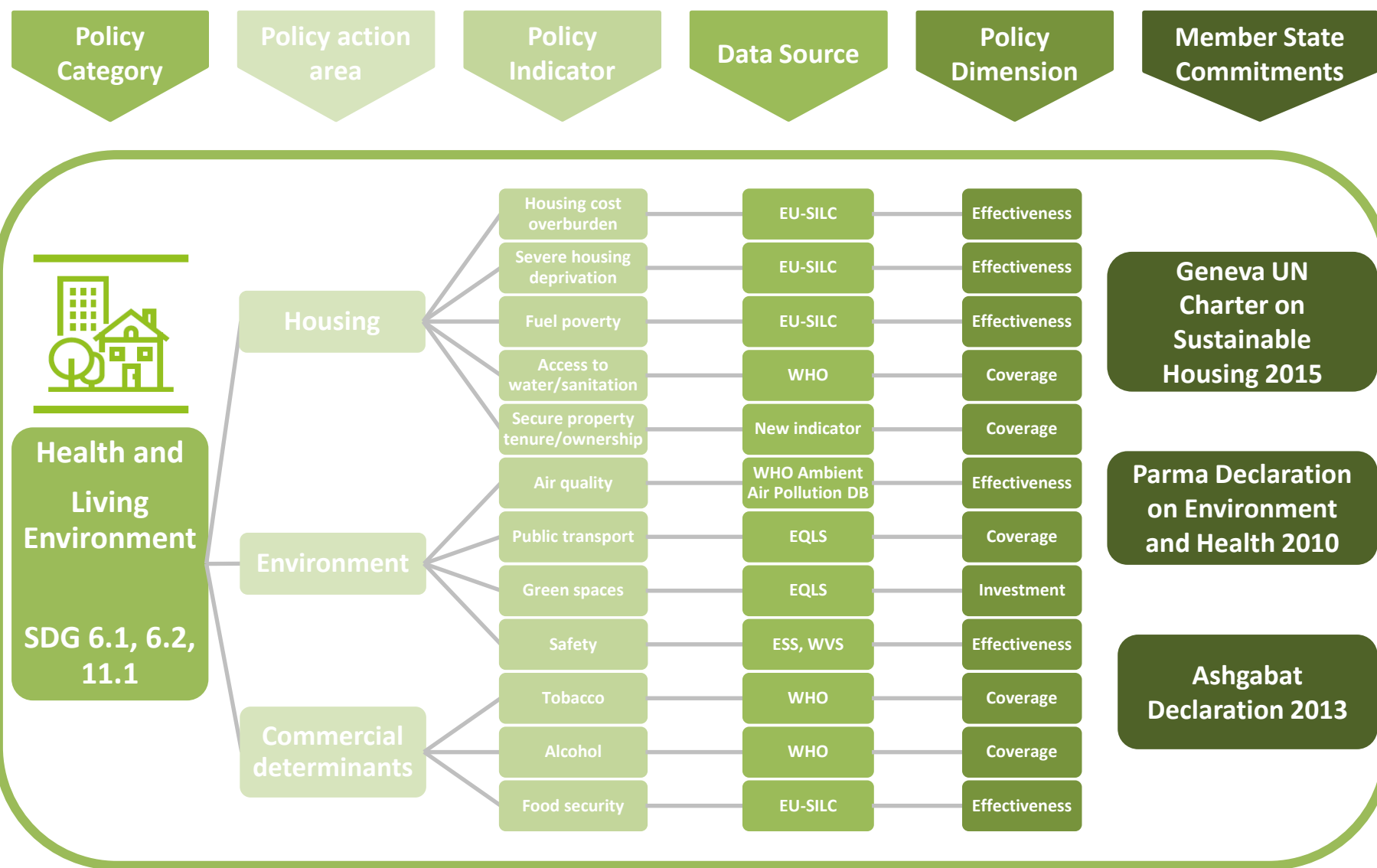
- 1.5 x higher poor mental health
- 2.5 x higher poor life satisfaction
- 2x higher illness limiting daily life

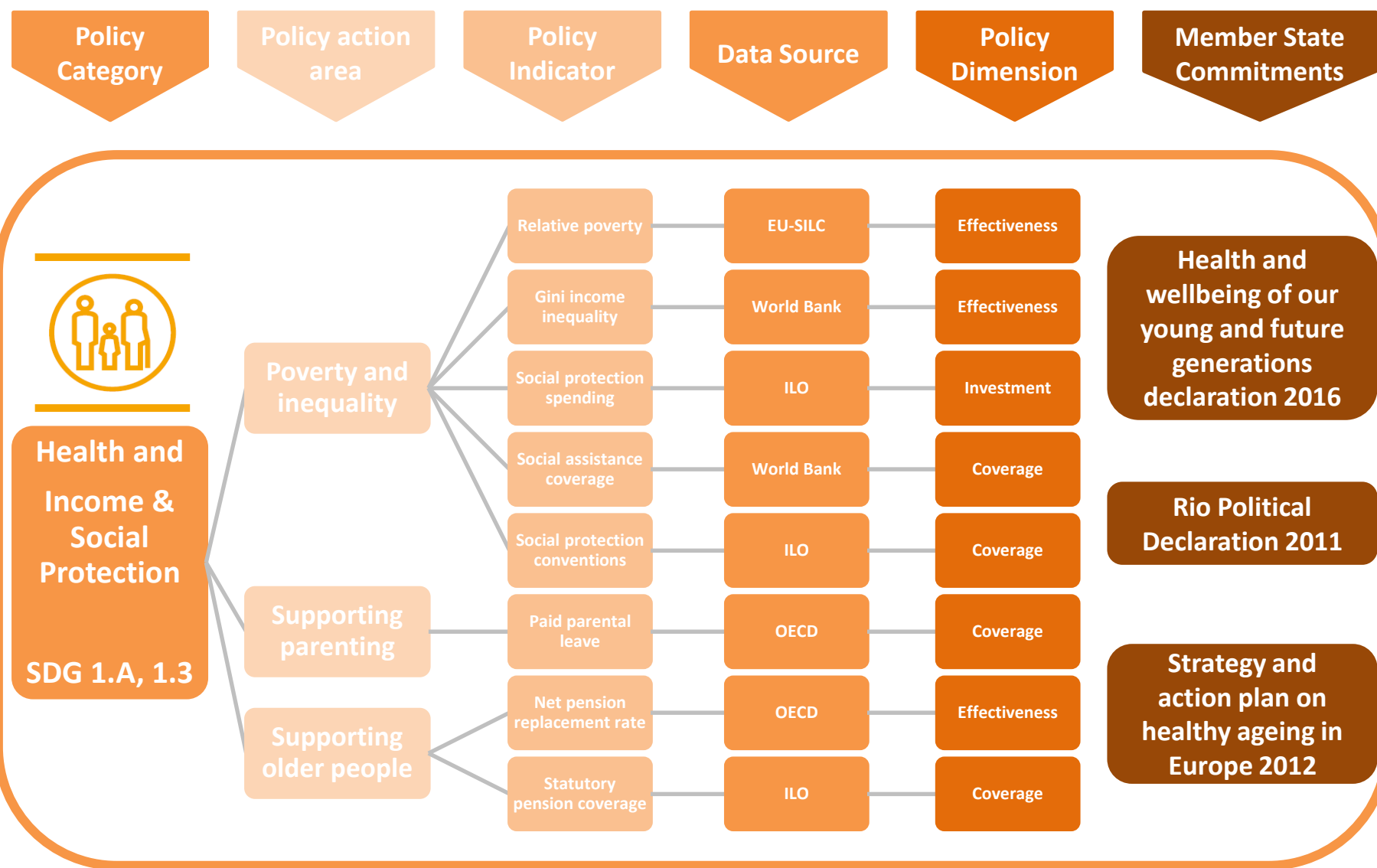
Gap increased in + 33% of countries in last 10yrs



- 2 x higher poor mental health
- 3 x higher poor life satisfaction
- 2 x higher illness limiting daily life

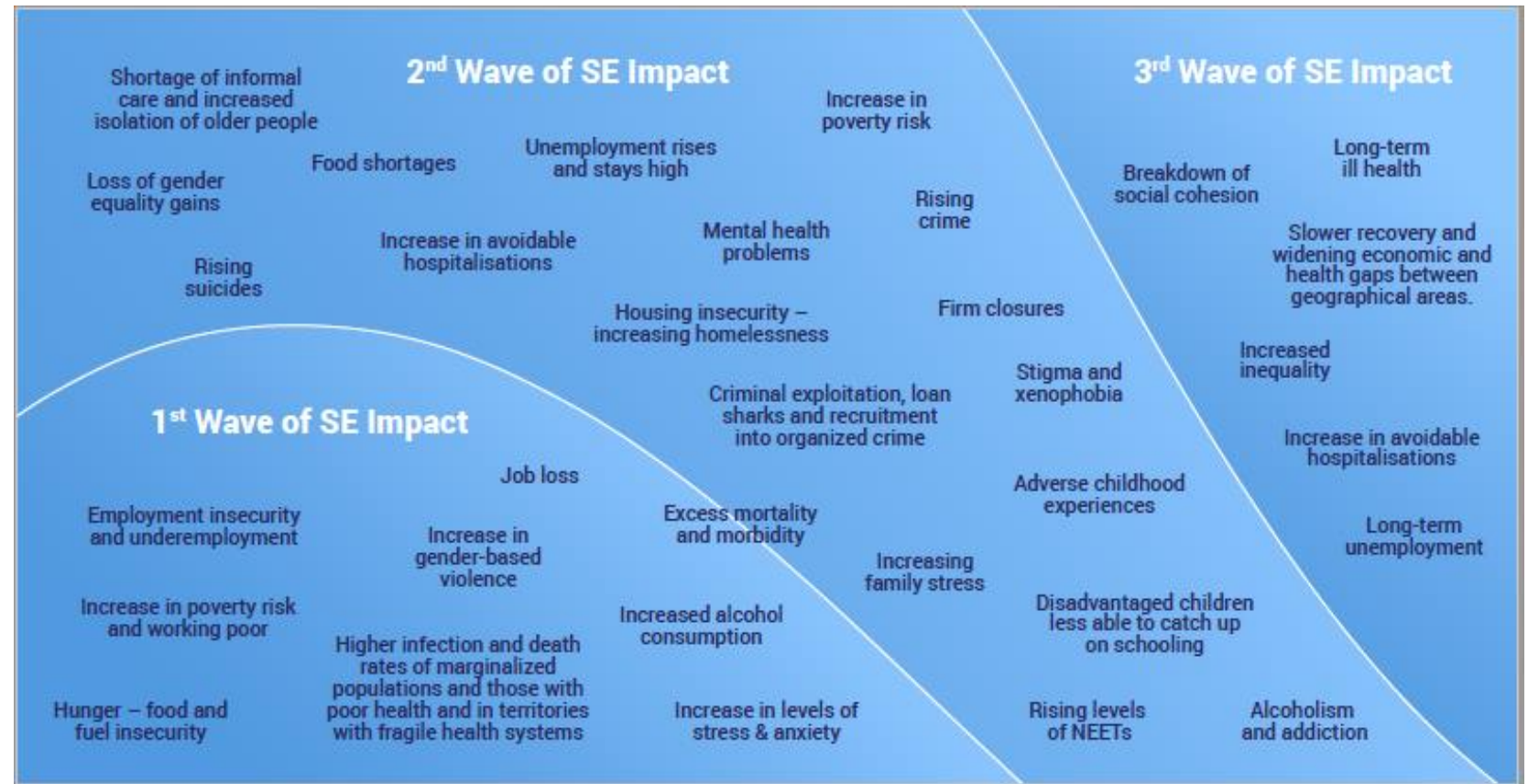
Gap increased in 20% of countries in last 10yrs





# Lessons learned from past crisis and current policy challenges

- Compounding existing inequities in health within countries
- New health and economic vulnerabilities
- Increased insecurity in access to essential health goods and services
- Increased levels and concentration of unmet health and social needs





# COVID-19 - the same virus but unequal impacts on health, lives and livelihoods



## Risks of infection & severe illness

- People living with co-morbidity
- Frontline and service sectors workers, informal workers
- Black and minority ethnic groups
- People living with multiple deprivation
- 'Looked after' older people, prisons, child & youth centres

## Effects of containment on health & health related good and services

- Mental Health, Violence, Abuse and Substance Misuse
- Housing
- Food
- 'Connectivity' digital and human
- Access to ongoing Health & Social services & Learning

## Consequences of social and economic impacts on health

- Unemployment rose by 1.811 million in the EU
- Loss of earnings, in April 2020 alone, 500,000-3million people sought social protection
- Indication of Gender inequity in caring and loss of wages/ employment
- Young people emerging as some of lockdown's biggest losers

# Leaving No one Behind

## The Country Health Equity Impact Assessment & Mitigation Tool



Impact Assessment Tool

Impact Assessment Tool

Designed to guide assessment on the specific social and economic impact of COVID-19 and its containment measures on health, health services and health determinants

Explore Tool

Mitigation Assessment Tool

Mitigation Assessment Tool

Designed to guide assessment for evidence informed measures on mitigating the impact of COVID-19 and its containment measures on health, health services and health determinants

Explore Tool

Build your own Report

Build your own Report

Designed to guide writing of your report based on suggestions and examples

Explore Tool



## The Rapid Assessment Tool

