



Global Research Agenda on health, migration and displacement

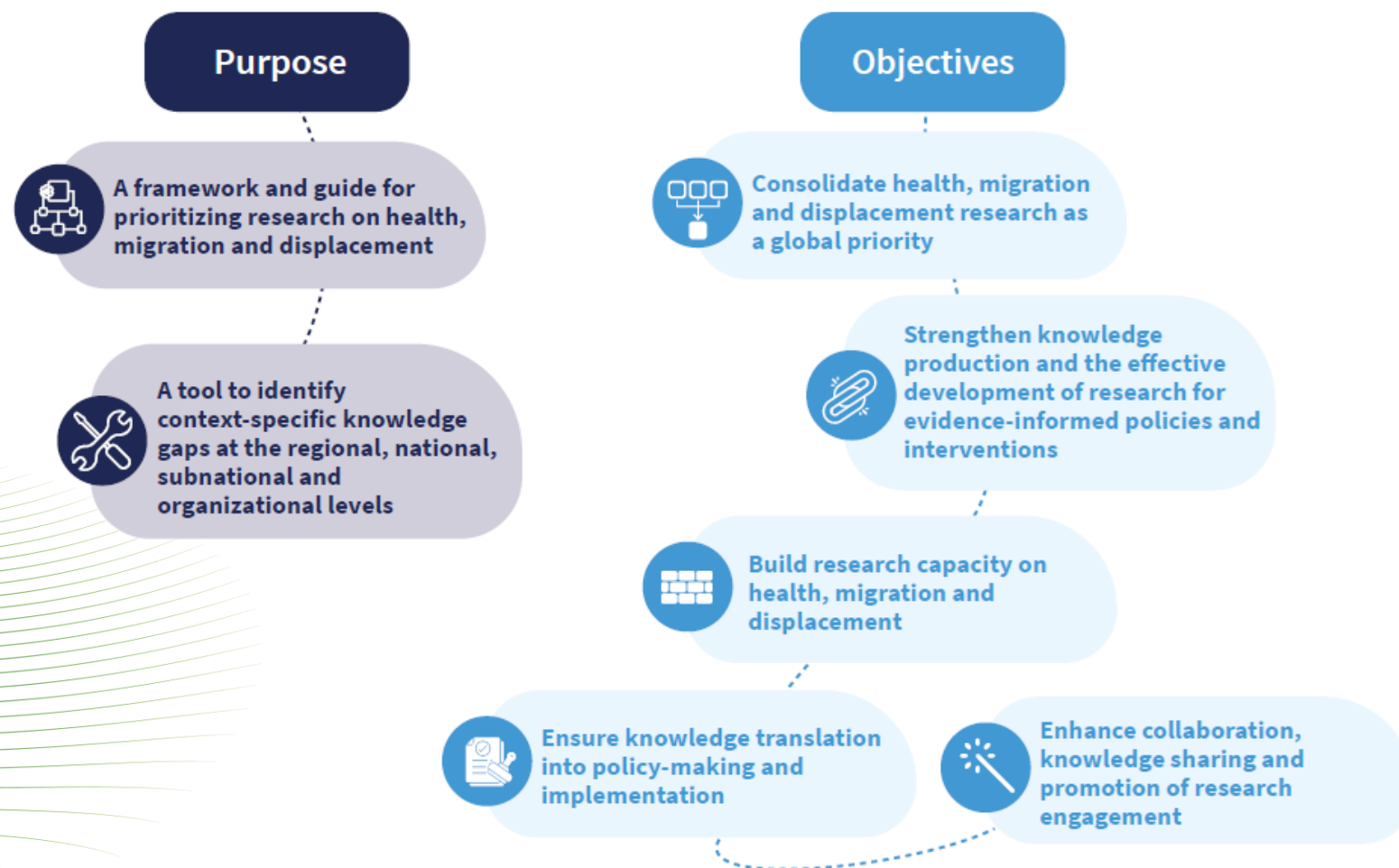
Strengthening research and translating research
priorities into policy and practice



The need to strengthen research on health, migration and displacement

- **1 person in every 8 worldwide** is a migrant or is forcibly displaced from their home
- The World report on the health of refugees and migrants noted a global lack of comprehensive, high-quality and contextualized research for topics relevant to policy-making and policy implementation
- More high-quality research on health, migration and displacement is crucial to
 - Developing effective policies and actions for Member States and for WHO
 - Achieving the Triple Billion Targets: advancing universal health coverage (UHC), addressing health emergencies and promoting healthier populations
 - Attaining the Sustainable Development Goals (SDGs)

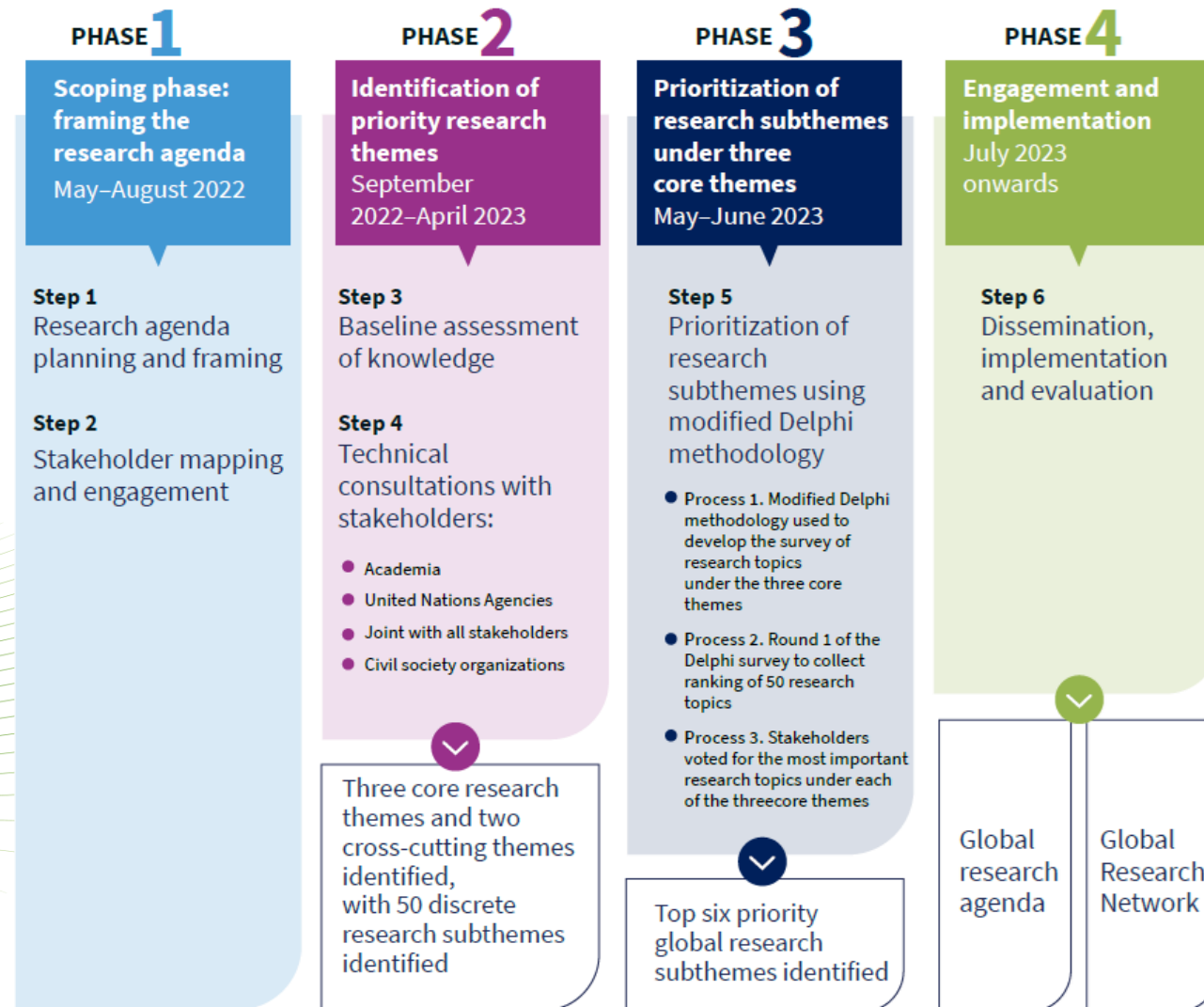
Global research agenda – purpose & objectives



Global research agenda process

- WHO Department of Health and Migration developed the Global research agenda from 2022 to 2023
- Working closely with WHO Science Division and the Research for Health Department
- Comprehensive process of technical consultations and surveys to determine global priority research areas focusing on the health of migrants, refugees and other displaced populations.
- Participatory engagement involving over 180 key stakeholders from all regions, across diverse backgrounds and migration and health contexts.

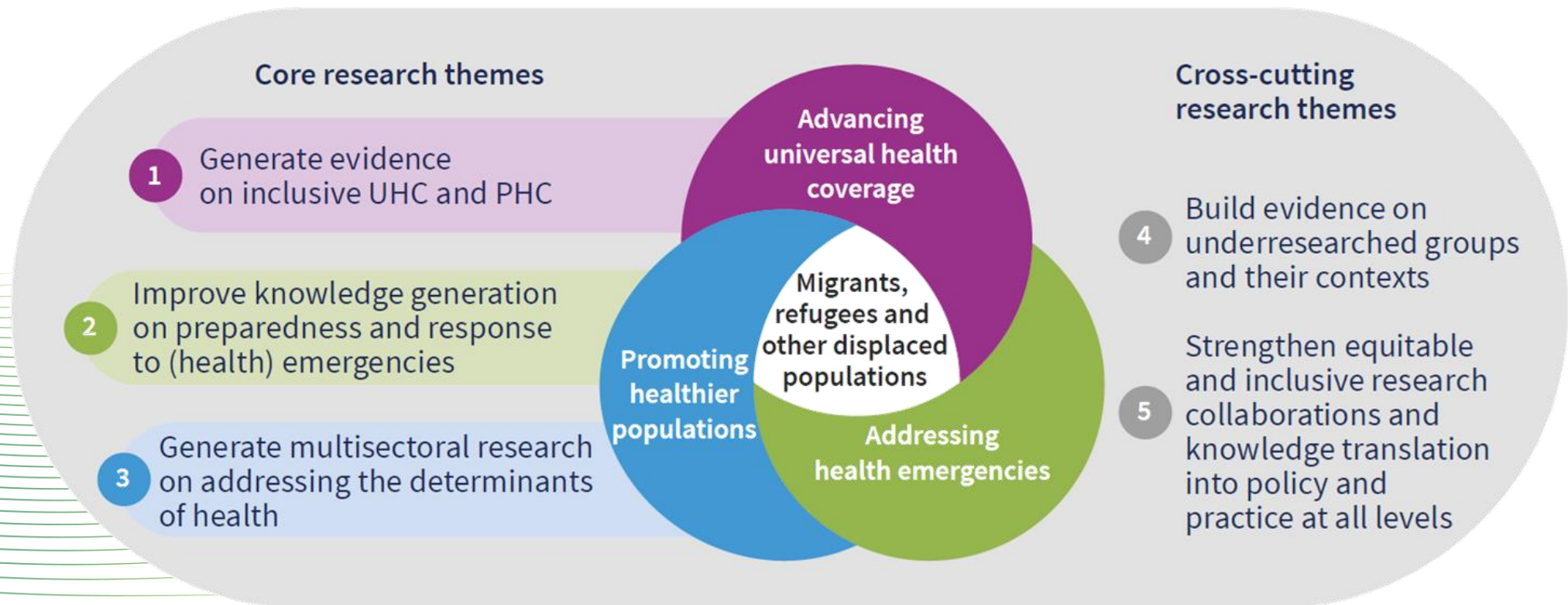
Process - phases of setting the Global research agenda



Ethical and participatory approaches followed

- developing transparent recruitment strategies to involve stakeholders with lived experience of migration and people working in organizations and agencies on research and service delivery;
- assessing the diversity of voices and perspectives by indicators such as gender, country and region;
- offering flexible ways to provide input, including electronic submissions and participation in online technical consultations;
- providing feedback to all stakeholders on the process and outputs of the agenda-setting process; and offering further opportunities to participate in implementation of the Global research agenda.

Five key research themes identified via consensus as global priorities to be addressed over the next five years



Priority subthemes under the three core themes

- **Core theme 1:** generate evidence on inclusive UHC and primary health care (PHC) for migrants, refugees and other displaced populations:
 - **priority subtheme 1.1** – effective models of health financing for migrants, refugees and other displaced populations;
 - **priority subtheme 1.2** – interventions to improve the responsiveness of service provision to diversity (for example, but not limited to: cultural background, language, religion, gender and sexuality).
- **Core theme 2:** improve knowledge generation on the inclusion of migrants, refugees and other displaced populations in preparedness and response to (health) emergencies:
 - **priority subtheme 2.1** – effective and sustainable models of health care for migrants, refugees and other displaced populations in humanitarian settings in low- and middle-income countries (LMICs) and fragile contexts;
 - **priority subtheme 2.2** – effective models of UHC in protracted displacement contexts.
- **Core theme 3:** generate multisector research on addressing the determinants of health of migrants, refugees and other displaced populations:
 - **priority subtheme 3.1** – impact of living and working conditions on the health of migrants, refugees and other displaced populations;
 - **priority subtheme 3.2** – impact of restrictive immigration policies, securitization and externalization of borders on the health of migrants, refugees and other displaced populations.

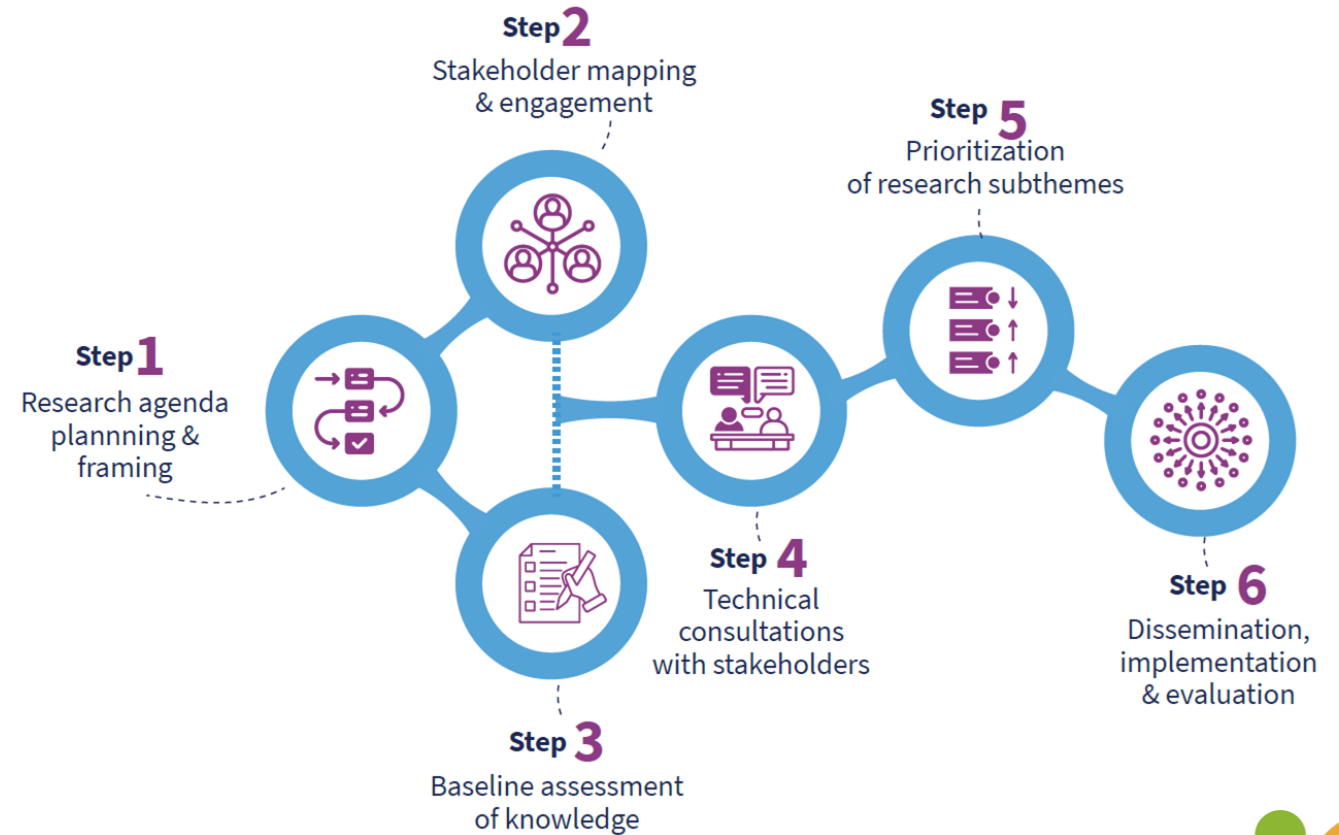
Proposed roadmap for a shared commitment to the Global research agenda

Shared action points identified:

1. Research governance and stewardship
2. Data collection and knowledge exchange
3. Sustainable research funding mechanisms
4. Harnessing policy levers for translation of evidence into policy and practice
5. Implementing and translation the Global research agenda at the regional and national levels

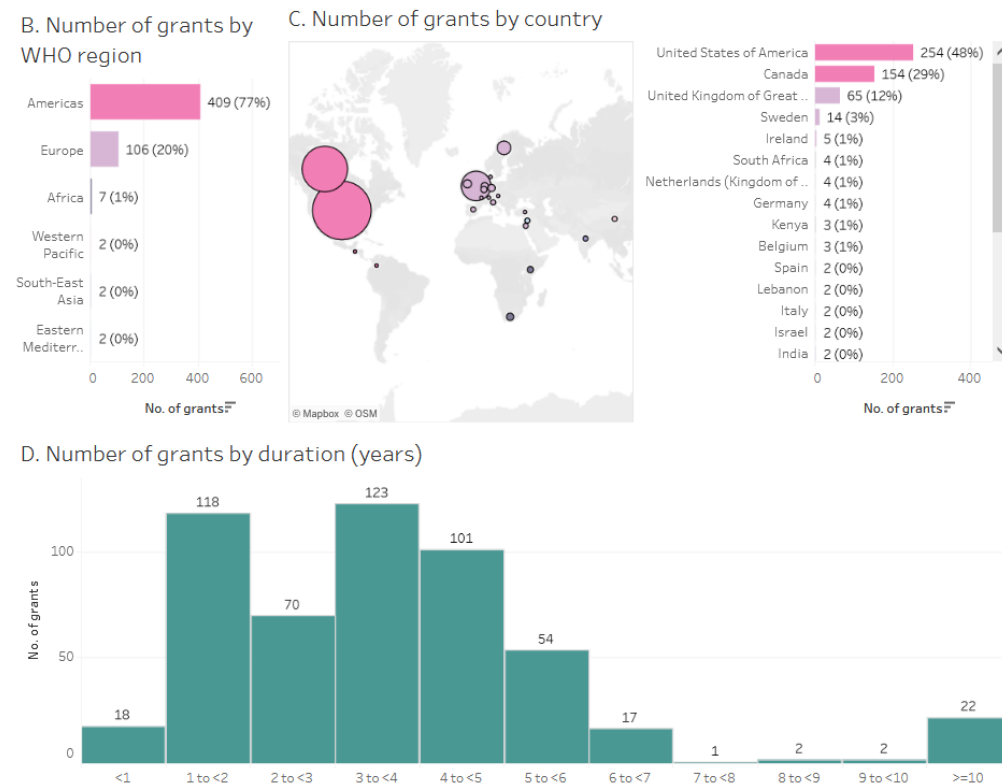
Implementation Guide and Toolkit for research agenda setting on health, migration and displacement

- Included in the Agenda (Annex 1)
- Future research on the topics identified requires adaptation at regional, national and local levels
- The Agenda provides a framework to be used by stakeholders in developing their own research agendas and priority research questions
- Six-step process for stakeholders build upon the Agenda in their own contexts



Funding dashboard

- Dashboard hosted by the WHO Global Observatory on Health Research and Development
- Identifies how funds from 9 of the major global research funding bodies within the field are distributed across various indicators (e.g. country, region, duration and funding amount)
- Aims to encourage strategic alignment of global research funding towards the Agenda's identified priorities
- Dashboard to be updated annually, with a view to expand the number of funding bodies reviewed and incorporating regional and national funding data



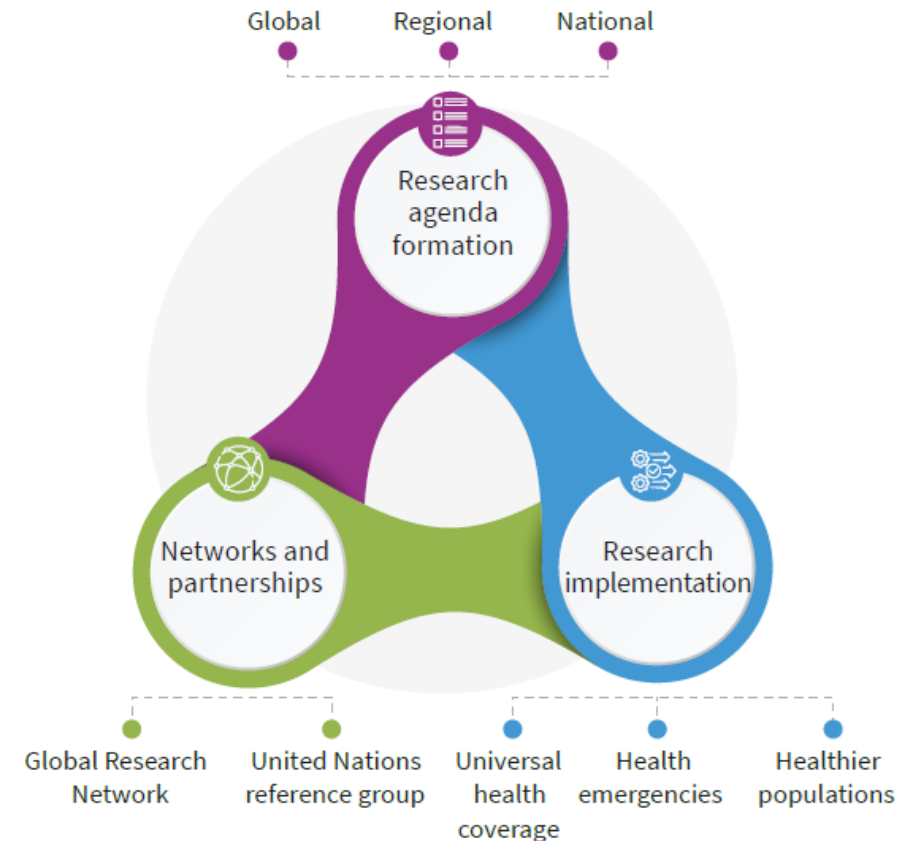
Funding landscape 2016-2020

- **The vast majority of grants (97%) from top global research funders are directed towards the WHO Region of the Americas and the WHO Region of Europe**, with 89% of grants awarded to 3 high-income countries: the United States of America, Canada and the United Kingdom.
- Of the 3 core research themes in the Global research agenda, the **least number of grants have been directed towards generating evidence on inclusive Universal Health Coverage (UHC) and primary health care (PHC)** for migrants, refugees and other displaced populations.
- **Less than 20% of all grants 2016-2020 were awarded for more than five years.** Research efforts in health, migration and displacement are hindered by short-term funding prospects and the inability to secure sufficient funding to implement and evaluate evidence-based solutions in a variety of different contexts.

WHO Department of Health and Migration work streams

The WHO Department of Health and Migration's work streams for the implementation of the Global research agenda over the next 2 years will focus on:

- Supporting regional and national level research agenda formation
- Strengthening research and research to policy translation
- Facilitating the formation of networks and partnerships



PHM priority research themes

1

Migrant and refugee inclusive universal health coverage and primary health care and health financing

2

Equitable access to and use of vaccines among migrants, refugees and other displaced populations

3

Climate change, migration, displacement and health

4

Noncommunicable diseases, migration and displacement.