

The Collaboratory

Laboratory for Collaborative Intelligence



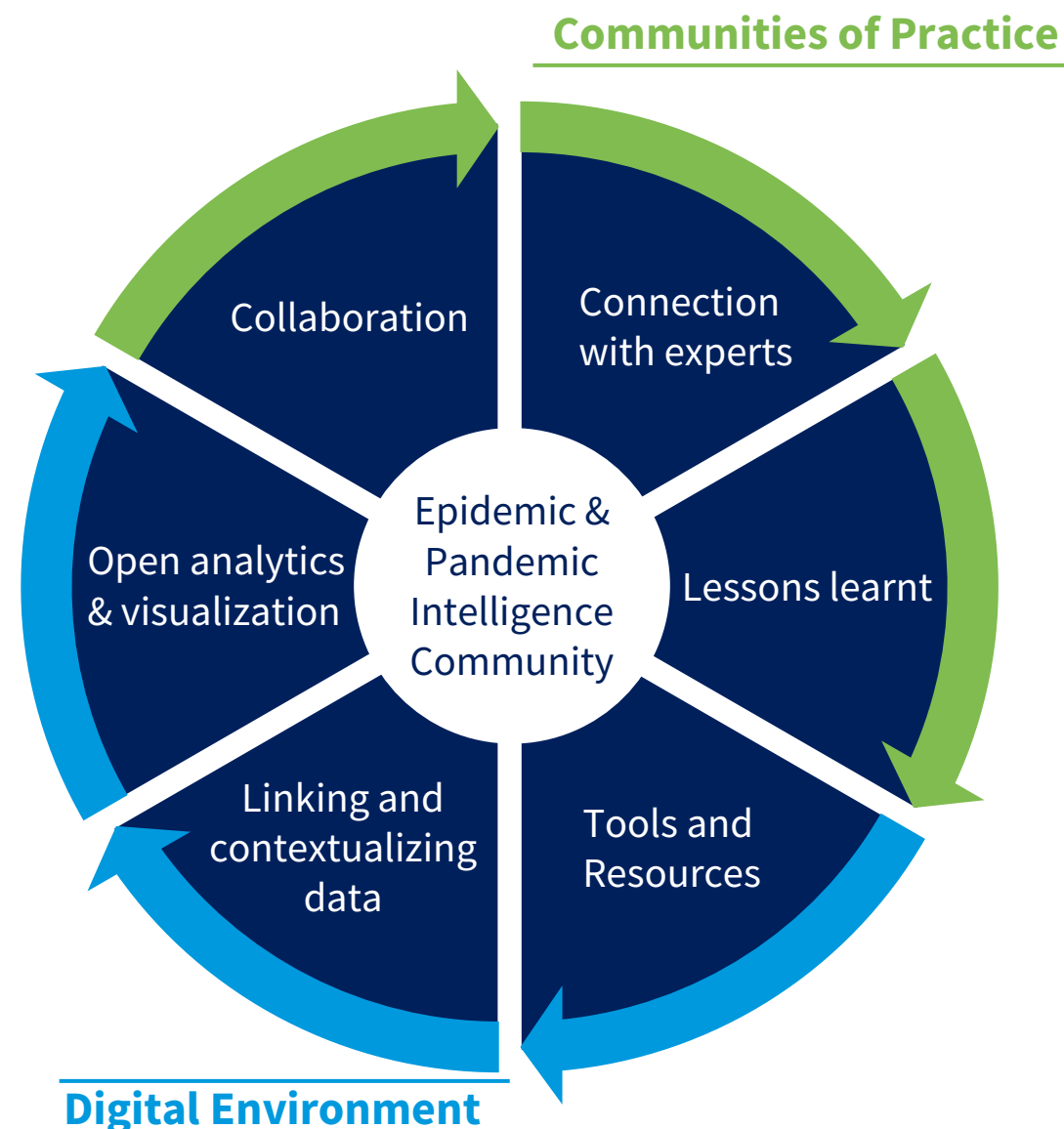
Collaboratory

Problem statement

Epidemic and pandemic intelligence communities have lacked a global collaborative space to solve complex problems collectively, design systems and jointly evaluate and improve analytical tools.

Vision

The Collaboratory will be a curated interactive digital environment where subject matter experts and the epidemic and pandemic intelligence community converge to communicate, cultivate ideas, rapidly generate, improve, and share actionable insights to respond to public health risks.



Building a culture of collaboration



Break down silos between institutions and groups



Promote diversity of perspectives



Establish a balanced and modernized approach to data governance that promotes data sharing while minimizing data security risks



Establish shared goals that benefit everyone in an equitable way



Emphasize the benefits of collaborative analytics and transparency



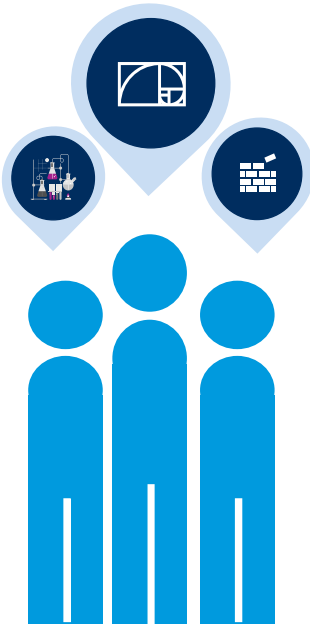
Produce practical and operational solutions and insights for decision makers in countries

Approach

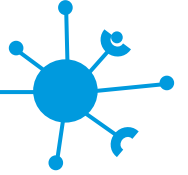
User-centric design



- Engaging with communities that are already collaborating
- Understanding users' experience, needs and requirements
- Iteratively designing impactful solutions
- Test solutions in user communities



Guiding principles



- Adopting a modular approach to allow reusability, adaptability and flexibility
- Linking used tools to the overall architecture
- Open source where possible
- Ensuring transparency of data, processes and tools
- Using an iterative process that allows for constant evaluation and improvement

Thank you

For more information, please contact:
Julia FITZNER
fitznerj@who.int

