

WHO's framework for public health intelligence

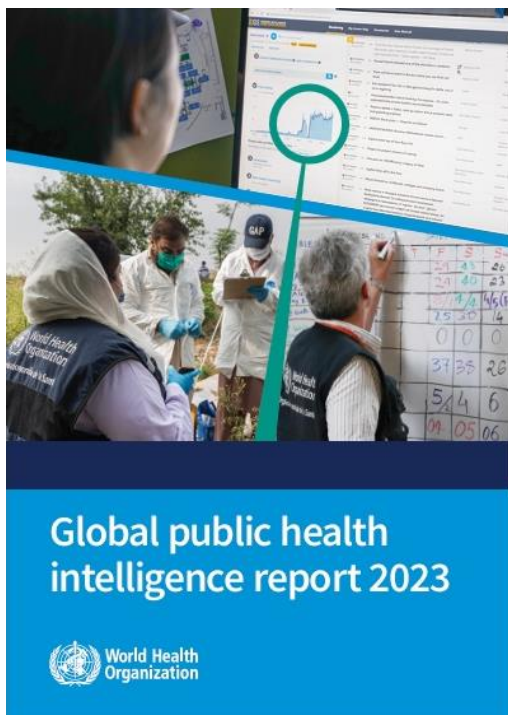
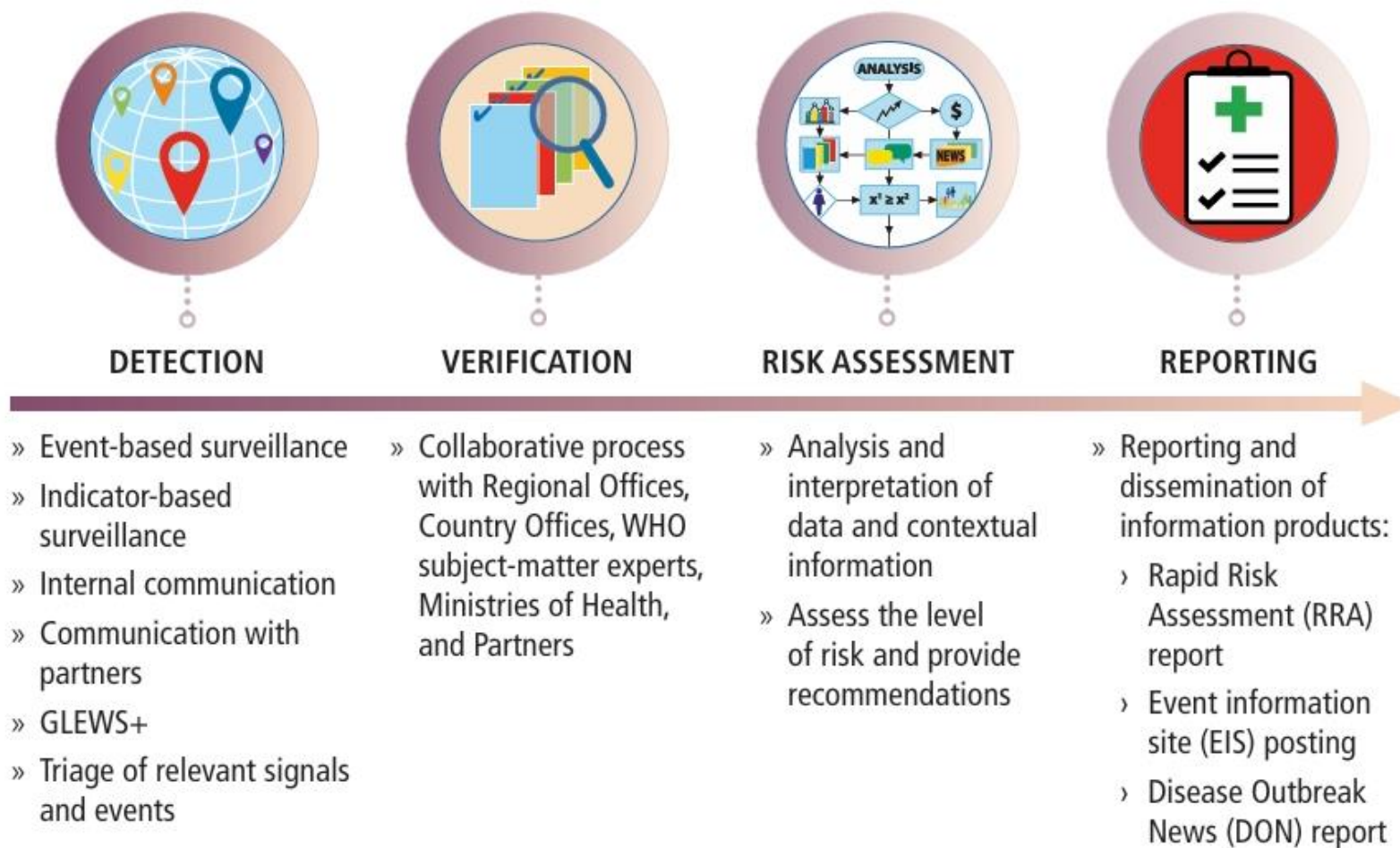


FIG. 1 Framework of public health intelligence activities at WHO



Thailand DDC's Situation Awareness Function

Data sources

- Local public health offices
- **EIOS** and other international news platforms (ProMED, CIDRAP, etc.)
- Risk communication team (Media, hotline)
- External networks

Situation Awareness Function

Perception

- Detection through IBS, EBS
- Triage
- Verification

Comprehension

- Verification (specific detail)
- Data analysis

Projection

- Risk assessment
- Forecasting

Watch

Subject Matter Experts

Executives

Joint Investigation team

Risk communication

Other relevant agencies

5 boards are daily monitored by a member in **the Watch team** for as follows:

🔒 Thailand Members

Mpox2024

watch

Created by Pantila Taweewigyakarn on 15 Aug 02:39 UTC | Last Modified by Pantila Taweewigyakarn on 15 Aug 02:42 UTC

Social media TH_Watch_DDC

ddc watch

Created by Pantila Taweewigyakarn on 26/01/2024 03:51 UTC | Last Modified by Pantila Taweewigyakarn on 20/02/2024 06:57 UTC

Dangerous disease

ddc watch

Created by Pantila Taweewigyakarn on 16/10/2023 02:17 UTC | Last Modified by Pantila Taweewigyakarn on 26/01/2024 03:54 UTC

ExpThailand_Watch_DDC

ddc watch

Created by Pantila Taweewigyakarn on 26/01/2024 03:53 UTC | Last Modified by Pantila Taweewigyakarn on 26/01/2024 03:53 UTC

Neighbor_Watch_DDC

ddc watch

Created by Pantila Taweewigyakarn on 26/01/2024 03:46 UTC | Last Modified by Pantila Taweewigyakarn on 26/01/2024 03:50 UTC

1. **Mpox2024** – to monitor the situation of mpox around the world. The board was created after WHO declared mpox as PHEIC on 14 Aug 2024.
2. **Social media TH_watch_DDC** – to monitor social media platforms in Thailand.
3. **Dangerous disease** – to monitor the situation of 12 Dangerous Communicable Diseases (according to Thailand's Communicable Disease Act)
4. **ExpThailand_Watch_DDC** – to monitor if there is a report of communicable disease case outside Thailand and suspected to contract the disease from Thailand
5. **Neighbor_Watch_DDC** – to monitor news related to communicable diseases in neighboring countries.

Challenges and the way forward

Challenges

- **Too much noise and duplication**
 - 600-700 headlines to be monitored a day
 - Other platforms are still being monitored
 - ProMED, CIDRAP, DONS, etc.
- **Skilled staff is needed to detect signals and assess the risk of each event**
 - Rotating staff weekly
- **User management**
 - Expansion to other departments and to the subnational level
 - How to keep the users list updated

Way forward

- **Using AI to screen the noise out**
- **SOP and training on event detection in EIOS and assessment are needed.**
- **Integrated user management procedure to other existing surveillance system**