

# ADVANCED TRAINING FOR THE MANAGEMENT OF AN EBOLA TREATMENT CENTER

OPTIMAL SUPPORT CARE FOR PATIENTS WITH SEVERE FORMS OF  
MVE

MANAGEMENT OF THE EBOLA TREATMENT  
CENTER TO OPTIMIZE MEDICAL CARE

KEY PRINCIPLES AND LATEST INNOVATIONS

# Key ETC Objectives

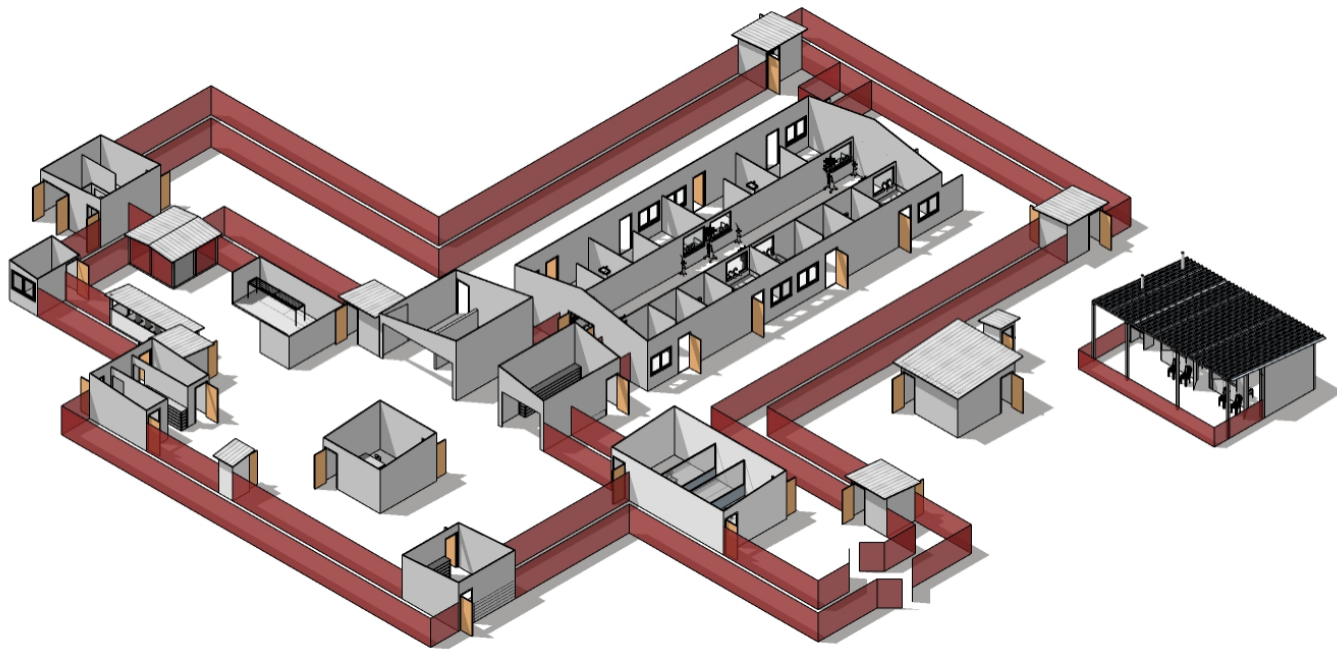
## Preventing the transmission of diseases

1. Isolate cases
2. Appropriate flow and management of contaminated materials
3. Physical and chemical barriers
4. Correct protocols
5. Qualified and trained personnel

## Provide the best patient care

1. Comfortable and safe environment
2. Privacy
3. Accessible, transparent to the community
4. Built around patients, staff and the community

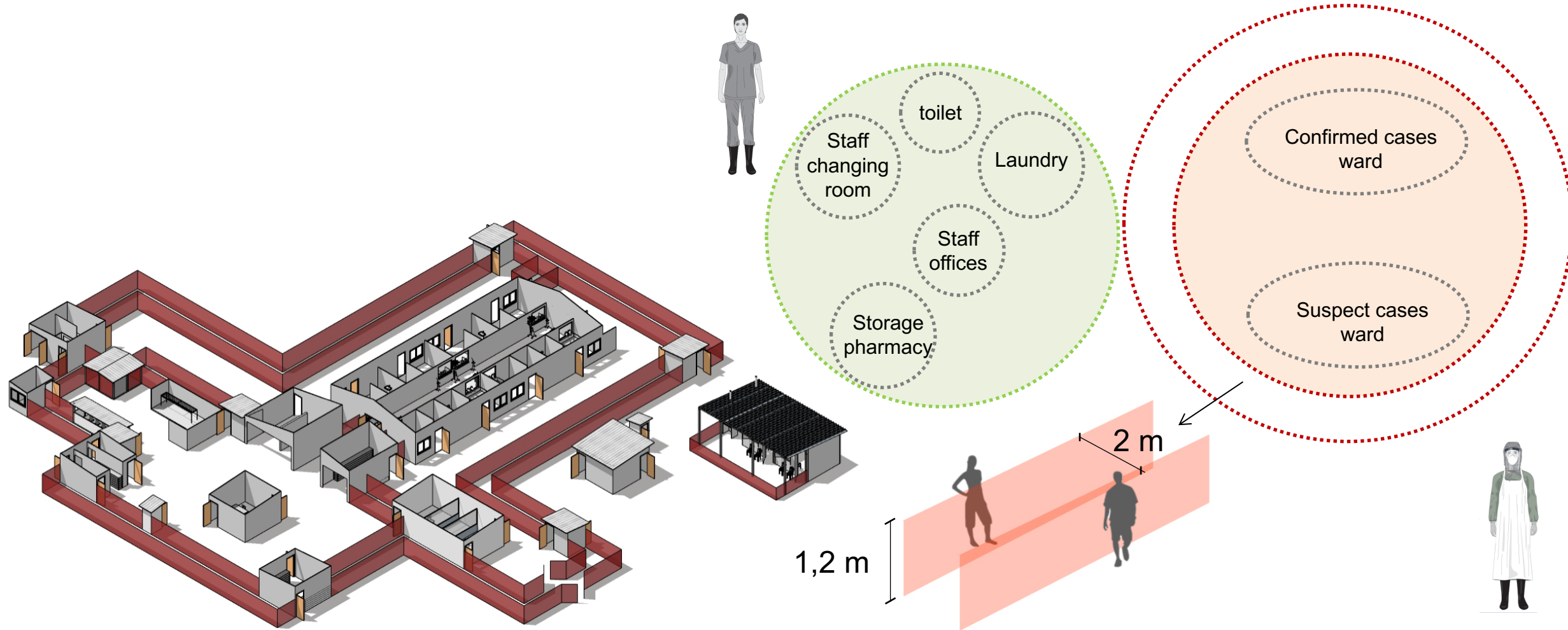
# Layout and key elements



World Health  
Organization

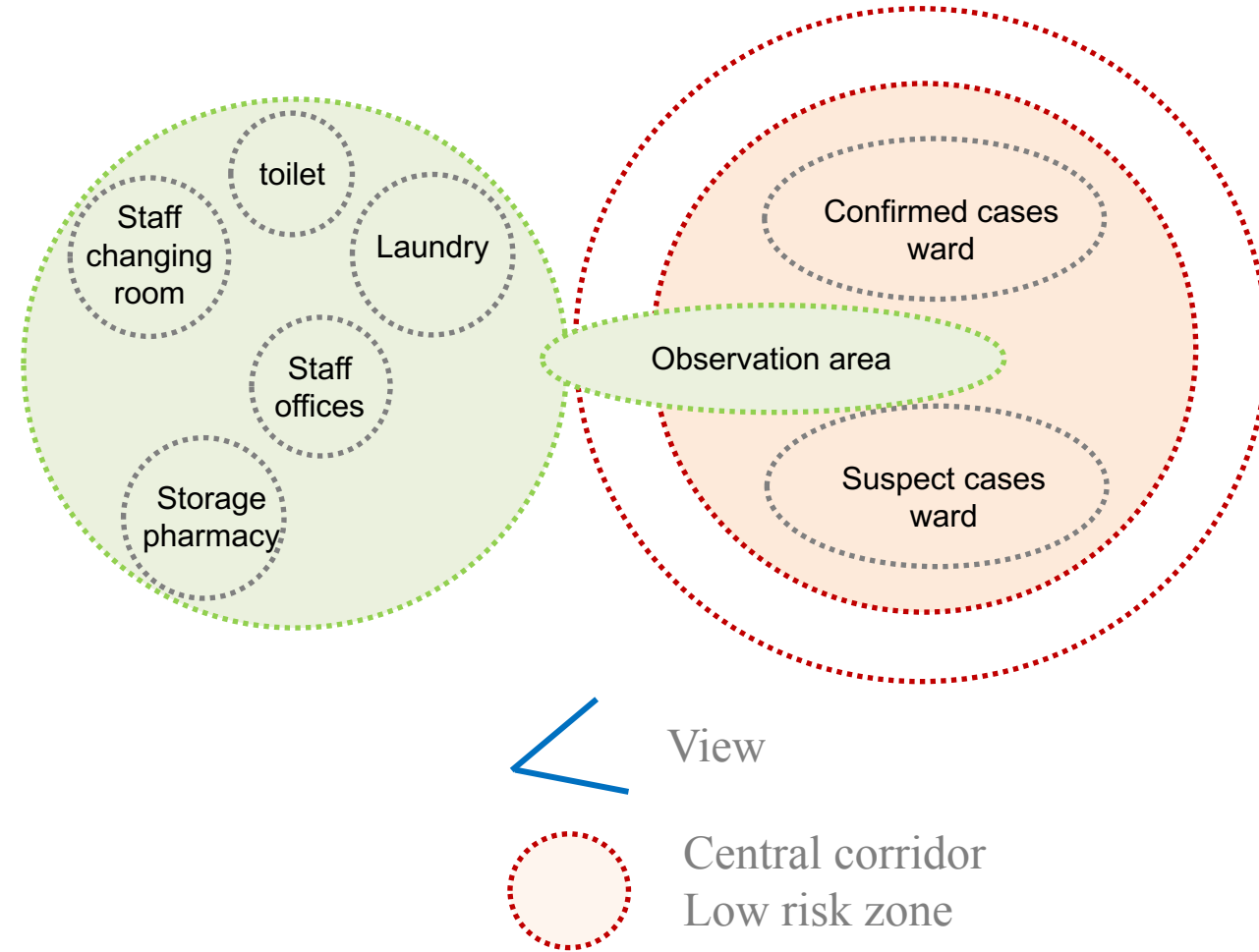
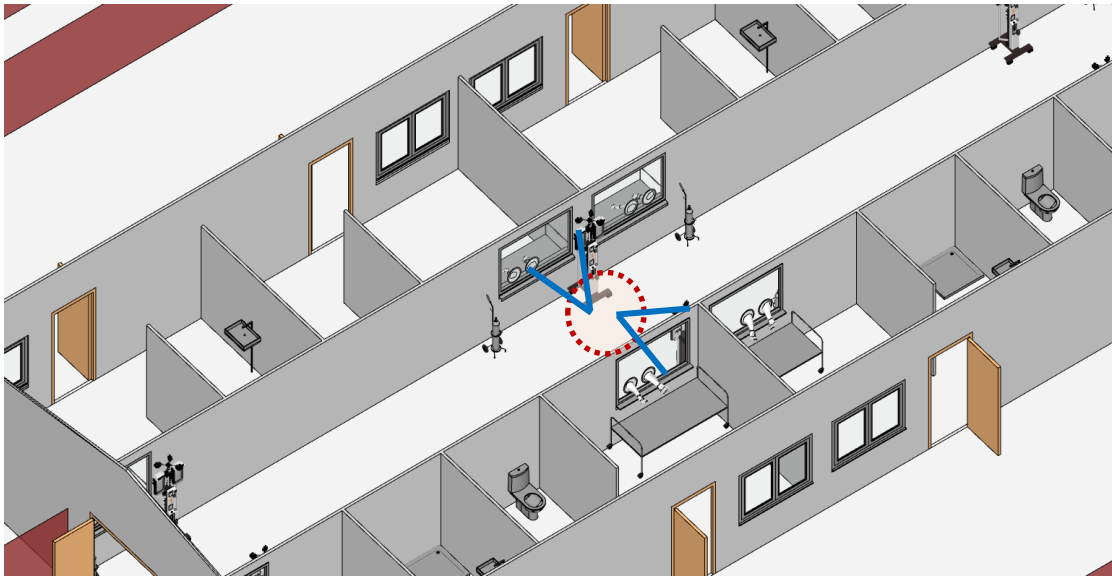
HEALTH  
**EMERGENCIES**  
programme

# Layout and key elements





# Layout and key elements



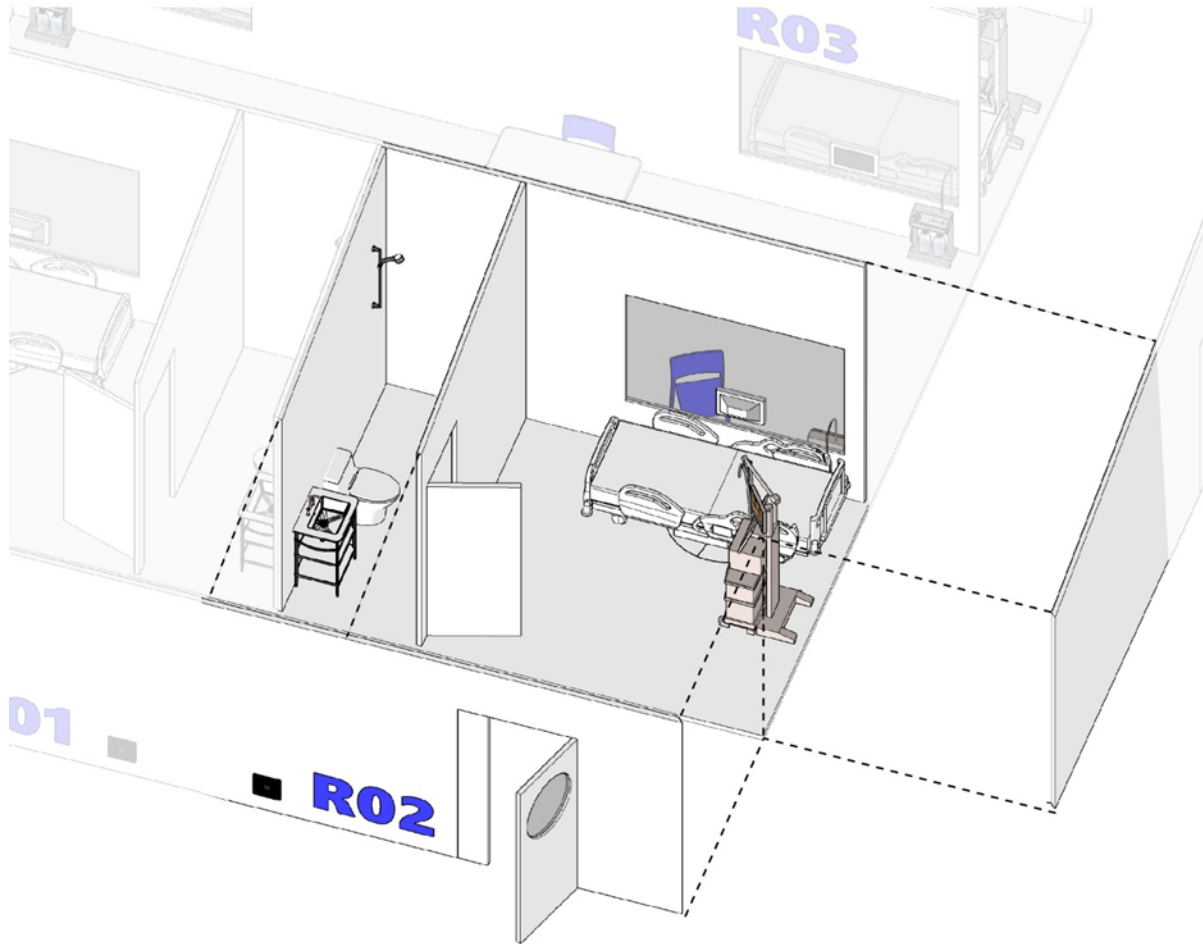
World Health  
Organization

HEALTH  
**EMERGENCIES**  
programme

# New design: Improved quality of care, constant patient observation



# New design: IPC and patient comfort



Individual and self-contained room, concrete floor and plastic sheeting walls to reduce the risk of nosocomial infections and ensure acceptable patient comfort.

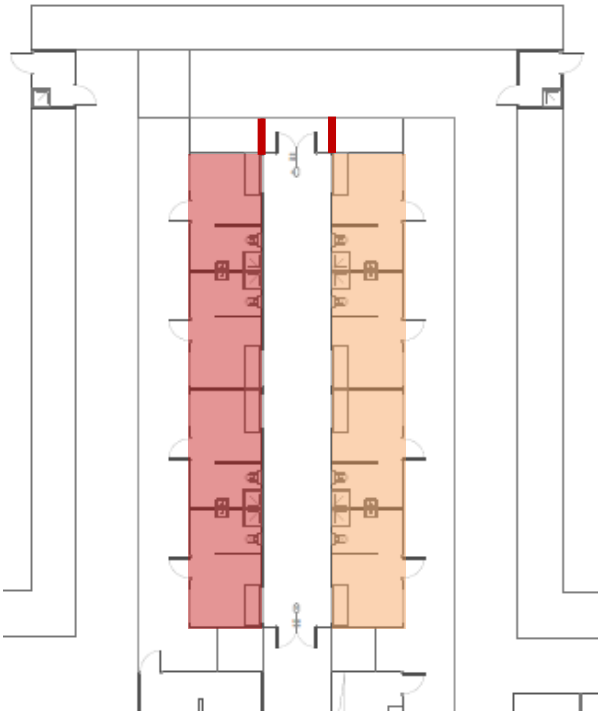


# New design: flexibility

4 suspects

+

4 confirmed



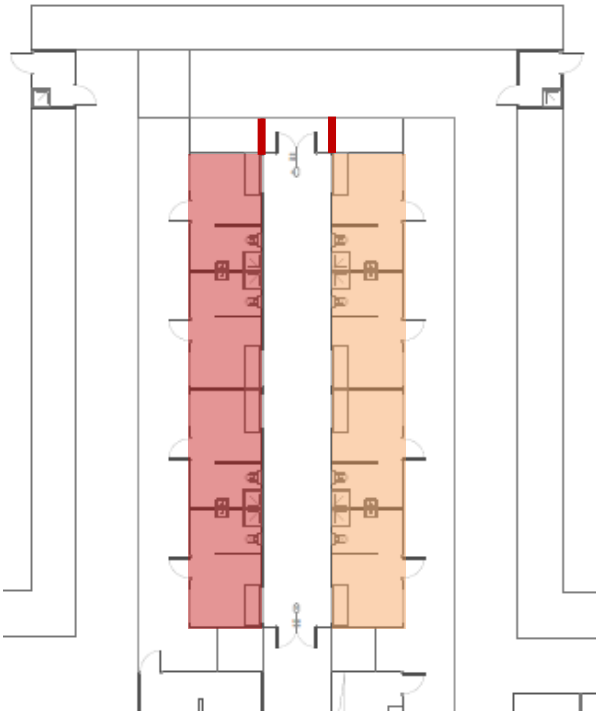


# New design: flexibility

4 suspects

+

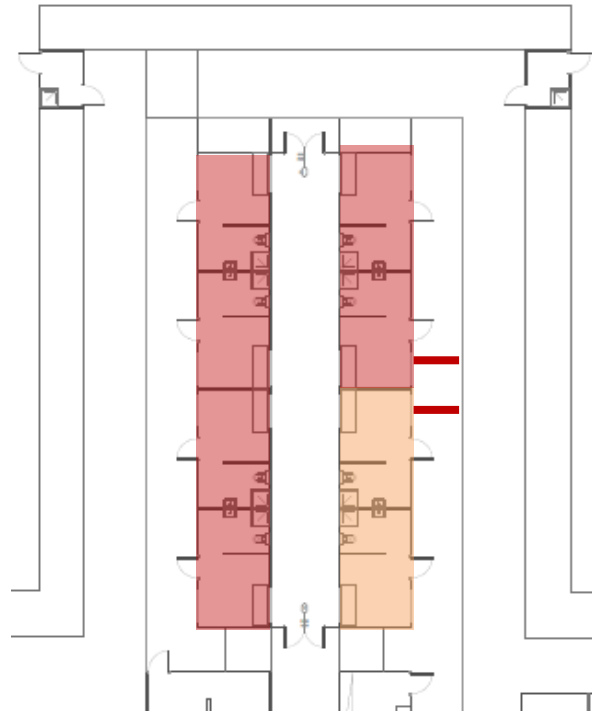
4 confirmed



2 suspects

+

7 confirmed

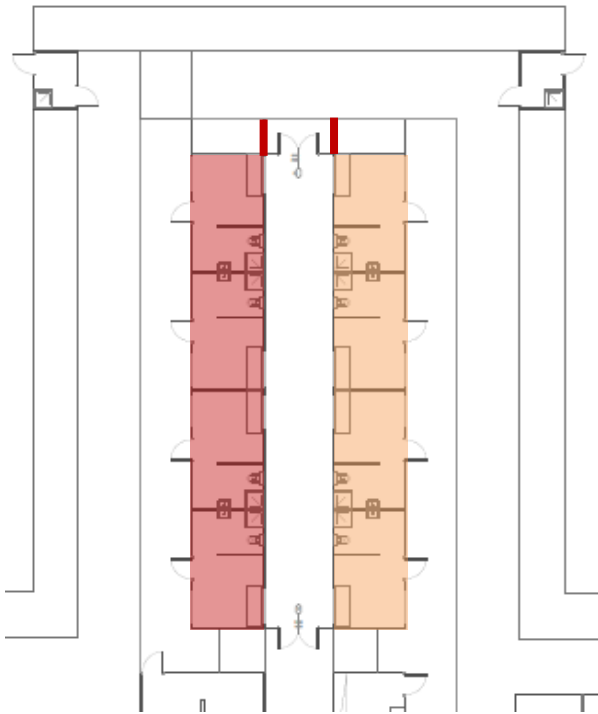


# New design: flexibility

4 suspects

+

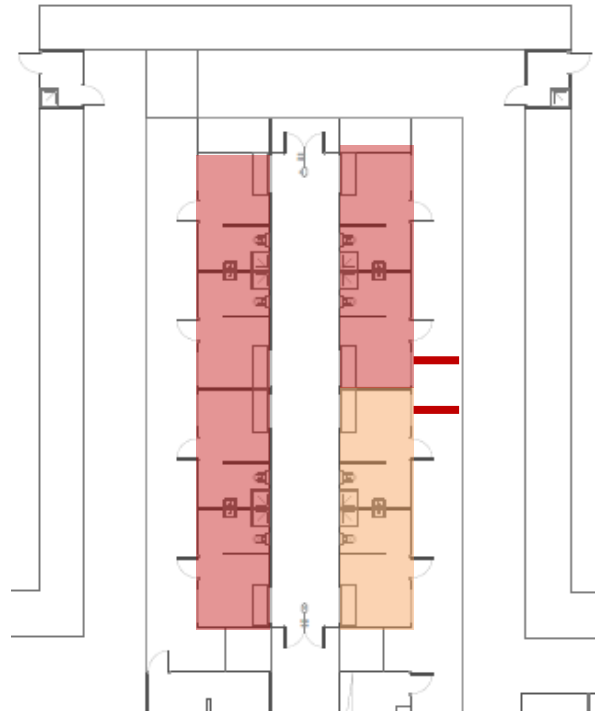
4 confirmed



2 suspects

+

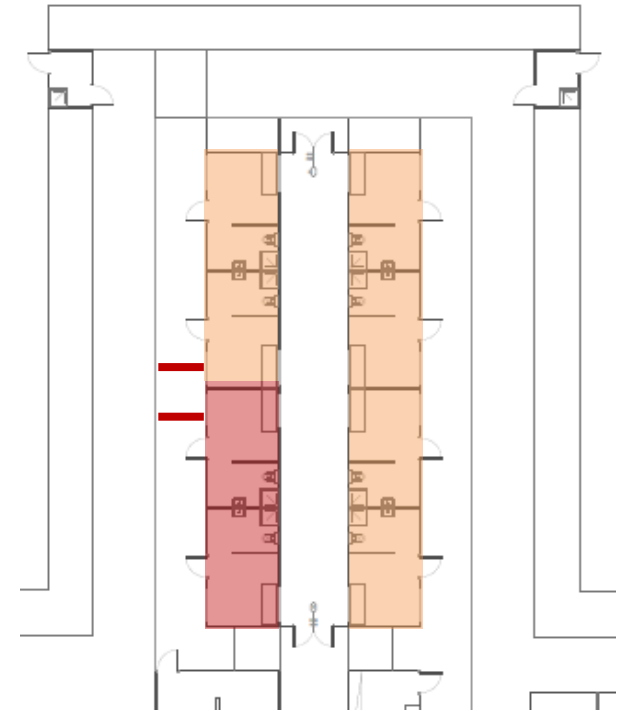
7 confirmed



7 suspects

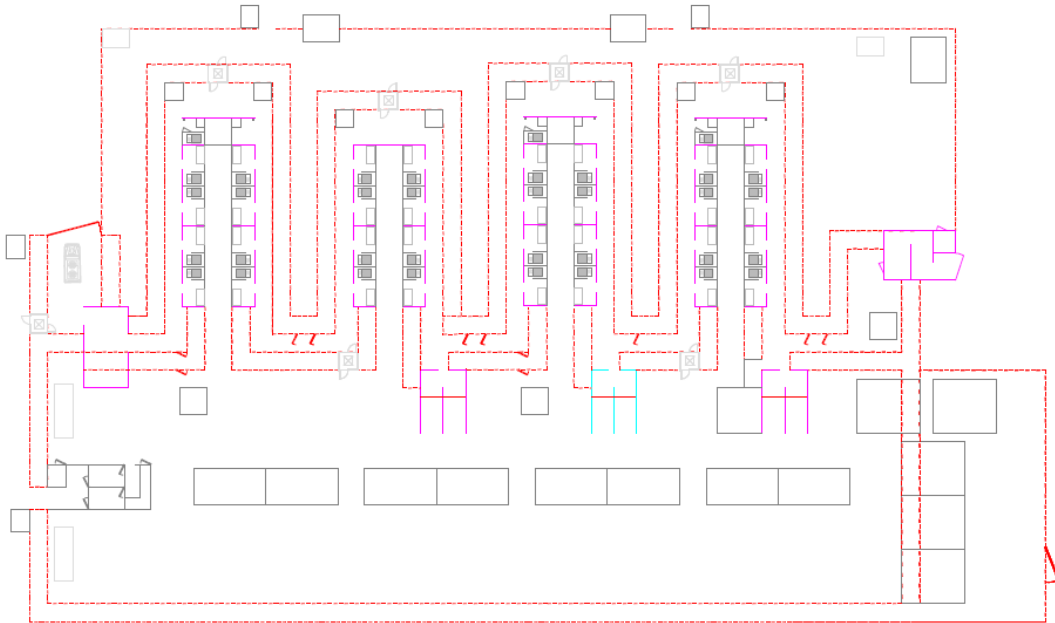
+

2 confirmed



# New design: surge

Bed capacity: 40

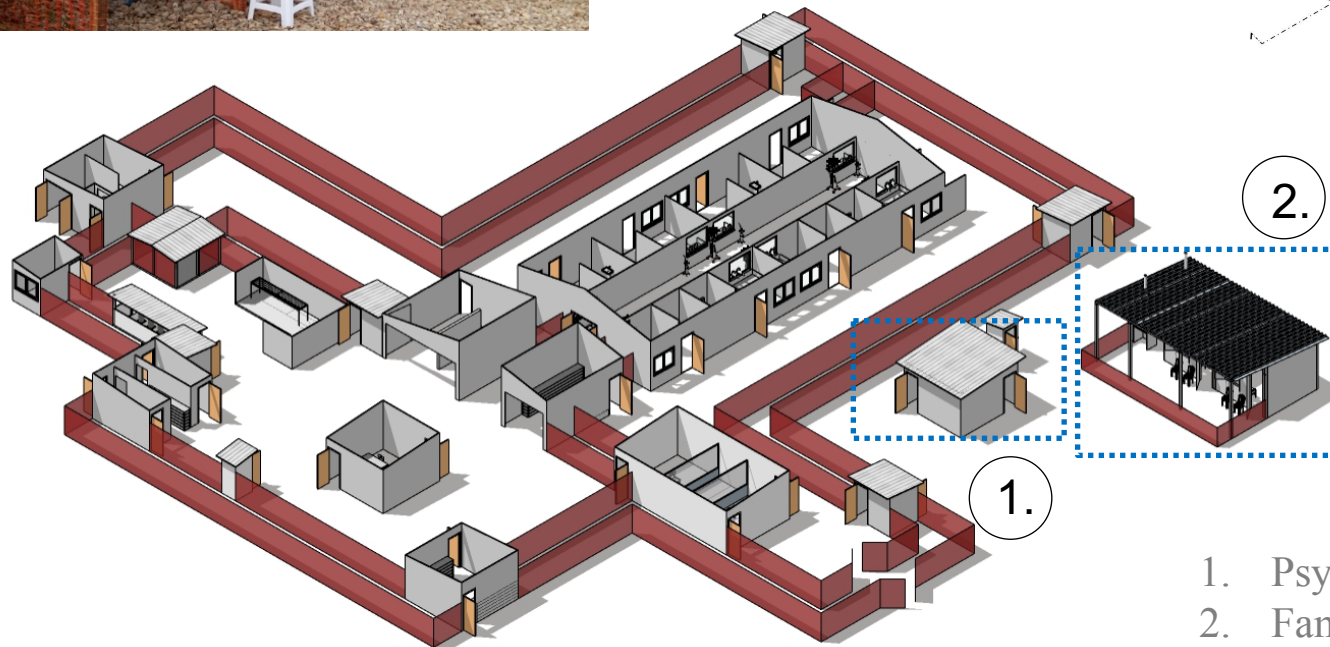
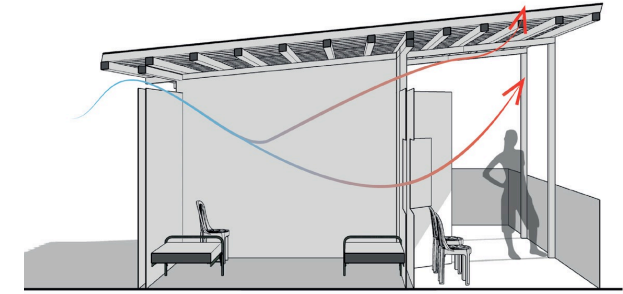
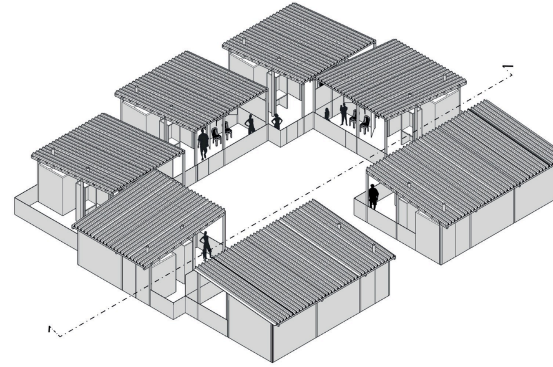


A well designed ETC can easily surge and scale down.

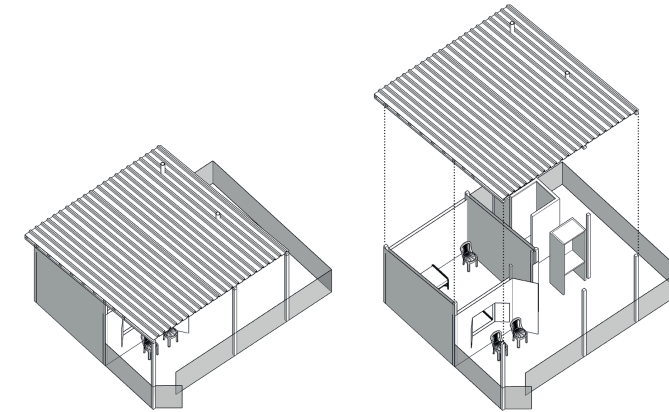
Adaptable to the epidemiological situation while rationalizing resources



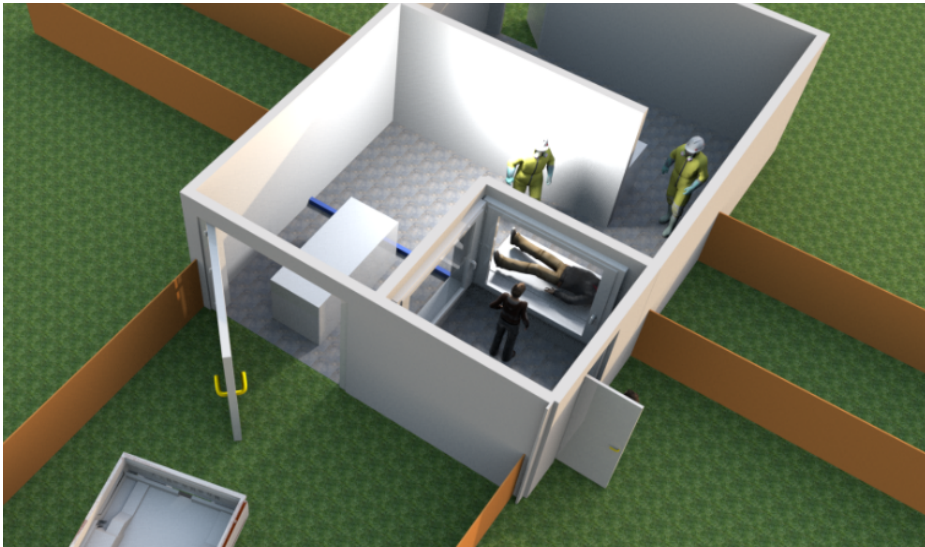
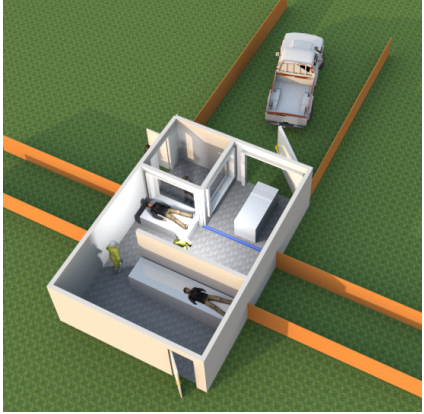
# Layout and key elements— low risk area



1. Psychosocial and HP
2. Family/caregiver accomodation - nursery



# New design: Adapted to traditions and funeral rituals



Respecting local traditions to increase community acceptance.

ETC not only to isolate patients, but accessible and focused on patients and their families.



World Health  
Organization

HEALTH  
**EMERGENCIES**  
programme

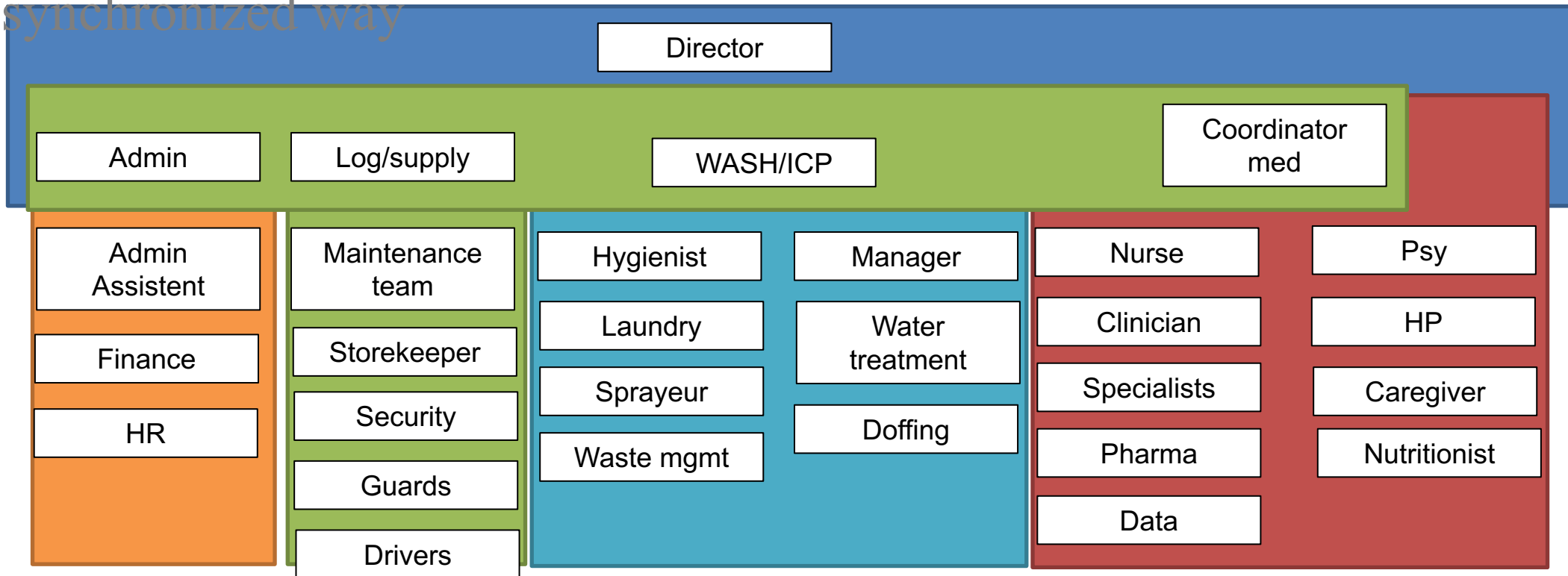


# New design and more add on



# New design & new management!

ETC is a very complex system where all the gears have to move in a synchronized way



# Thank you