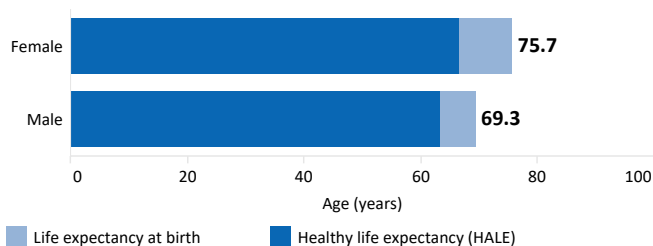


# Democratic People's Republic of Korea

Population (000s) <sup>1</sup>	Urban population <sup>2</sup>	Poverty <sup>3</sup>	GDP per capita <sup>4</sup> (current US\$)	Current health expenditure as share of GDP <sup>4</sup>
26 161	63.2%	(PPP <US\$ 2.15 a day) Relevant data not available	Relevant data not available	Relevant data not available

## Monitoring the health SDG goal: Indicator of overall health and well-being

### Life expectancy at birth<sup>5</sup>



Life expectancy at birth is the average number of years that a newborn is expected to live if s/he were to pass through life exposed to the sex- and age-specific death rates prevailing at the time of birth, for a specific year, in a given country, territory or geographical area.

Healthy life expectancy (HALE)<sup>5</sup> at birth is the average number of years that a person can expect to live in 'full health' by taking into account years lived in less than full health due to disease and/or injury.

Compared to males, females have 6.4 years of longer life expectancy and 3.3 years of more HALE.

## Universal health coverage (UHC): at the centre of health-related SDGs

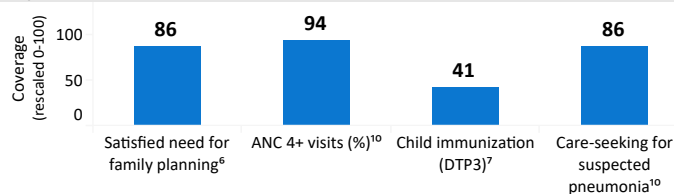
The goal of UHC (SDG3 Target 3.8) is to ensure that every individual and community, irrespective of their circumstances, should receive the health services they need without risking financial hardship. To monitor Target 3.8, two indicators are regularly estimated: 3.8.1, which captures the population coverage dimension of UHC and 3.8.2, which captures the financial protection dimension of UHC.

### HEALTH SERVICE COVERAGE

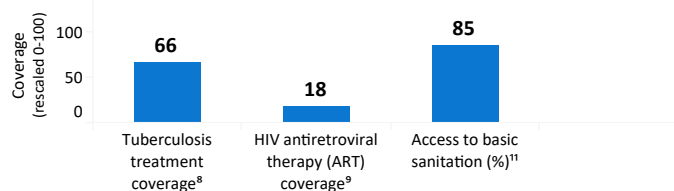
The summary measure of essential health service coverage is the *service coverage index* of sub-indicators in four main areas:

- (1) reproductive, maternal, newborn and child and adolescent health; (2) infectious diseases; (3) noncommunicable diseases; (4) service capacity, access and health security.

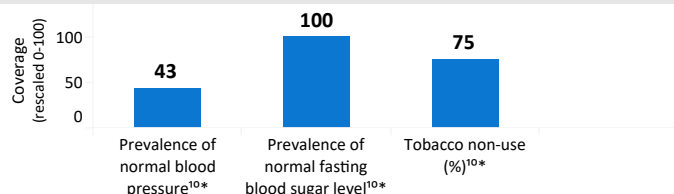
#### Reproductive, maternal, newborn and child health (RMNCAH)



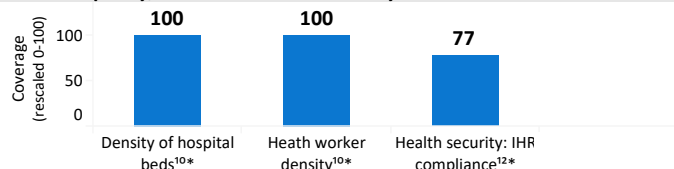
#### Infectious diseases



#### Noncommunicable diseases



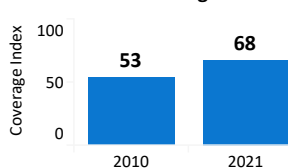
#### Service capacity, access and health security



### UHC Service Coverage Index (UHC SCI) of essential health services

UHC SCI is a single indicator computed from tracer indicators of the coverage of essential services in the areas of RMNCAH, infectious disease control, NCDs and service capacity and access. Presented on a scale of 0 to 100 (full coverage), the index is constructed from geometric means of the tracer indicators; first, within each of the four categories, and then across the four category-specific means to obtain the final summary index.

#### UHC service coverage index



### FINANCIAL PROTECTION

Financial protection in health occurs when families who get needed care do not suffer undue financial hardship as a result. The official SDG indicators for financial protection are:

- (1) Impoverishment due to out-of-pocket health spending, and
- (2) catastrophic out-of-pocket health expenditure.

Impoverishment<sup>3</sup>: Insufficient data.

Catastrophic expenditure on health<sup>3</sup>: Insufficient data.

### Out-of-pocket expenditure<sup>4</sup>

In most cases, a high percentage of out-of-pocket expenditure out of the current health expenditure is associated with low financial protection.

Current data is insufficient for analysis

### Public spending on health<sup>4</sup>

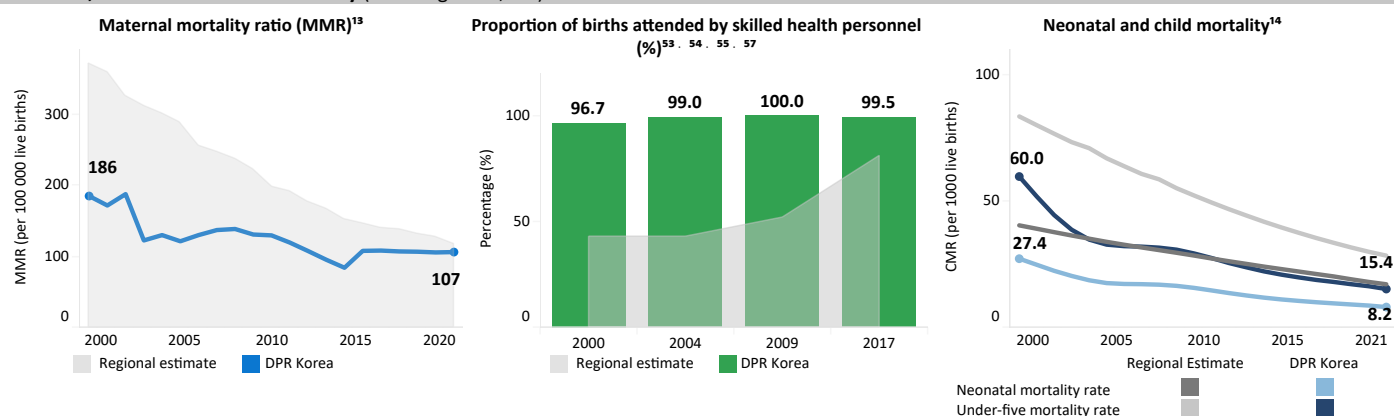
Is determined by the capacity of the government to raise revenues and the level of priority it attaches to the health sector.

Current data is insufficient for analysis

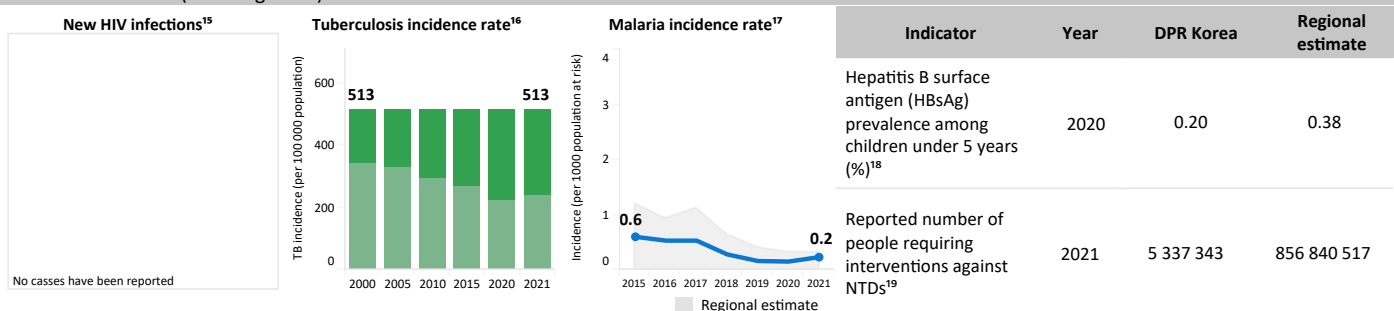
This health and health-related SDG country profile is a tool for action. It supports each country to assess progress in population health and to identify opportunities to address intervention coverage gaps and accelerate progress in improving coverage and health outcomes. It also includes indicators to monitor WHO's Thirteenth General Programme of Work 2019–2025 (GPW13) Impact Framework programmatic targets.

## SDG 3: Health targets

### Maternal, neonatal and child mortality (SDG target 3.1, 3.2)



### Infectious diseases (SDG target 3.3)



### Noncommunicable diseases, substance abuse and road traffic injuries

Indicator	SDG target	Year	DPR Korea	Regional estimate
Probability of dying between the ages of 30 and 70 years from cardiovascular diseases, cancer, diabetes or chronic respiratory diseases (%) <sup>20</sup>	3.4.1	2010	25.8	23.4
		2019	23.9	21.6
Suicide mortality rate (per 100 000 population) <sup>21</sup>	3.4.2	2010	–	11.6
		2019	–	10.1
Alcohol per capita consumption (aged 15 years and older) within a calendar year (in litres of pure alcohol) <sup>22</sup>	3.5.2	2010	4.4	3.6
		2019	4.3	3.8
Death rate due to road traffic injuries (per 100 000 population) <sup>23</sup>	3.6.1	2010	23.4	17.6
		2019	24.2	15.8

### Sexual and reproductive health

Indicator	SDG target	Year	DPR Korea	Regional estimate
Proportion of women of reproductive age (15–49 years) who have their need for family planning satisfied with modern methods (%) <sup>53, 56</sup>	3.7.1	2002	68.2	–
		2017	89.7	–
Adolescent birth rate (per 1000 women age 10–14 years) <sup>24</sup>	3.7.2	2010	–	1.0
		2022	–	0.5
Adolescent birth rate (per 1000 women aged 15–19 years) <sup>24</sup>	3.7.2	2010	–	46.9
		2022	–	25.2

### Mortality due to environment pollution

Indicator	SDG target	Year	DPR Korea	Regional estimate
Age-standardized mortality rate attributed to household and ambient air pollution (per 100 000 population) <sup>25</sup>	3.9.1	–	–	–
		2019	212.8	132.8
Mortality rate attributed to exposure to unsafe water, sanitation and hygiene (WASH) services (per 100 000 population) <sup>26</sup>	3.9.2	2010	–	–
		2019	4.1	29.6
Mortality rate attributed to unintentional poisoning (per 100 000 population) <sup>27</sup>	3.9.3	2010	1.5	0.5
		2019	1.4	0.3

### Tobacco use

Indicator	SDG target	Year	DPR Korea	Regional estimate
Age-standardized prevalence of tobacco use among persons aged 15 years and older (%) <sup>28, 29</sup>	3.a.1	2010	22.3	37.6
		2020	17.4	29.0

Note: En dash (–) implies relevant data are not available

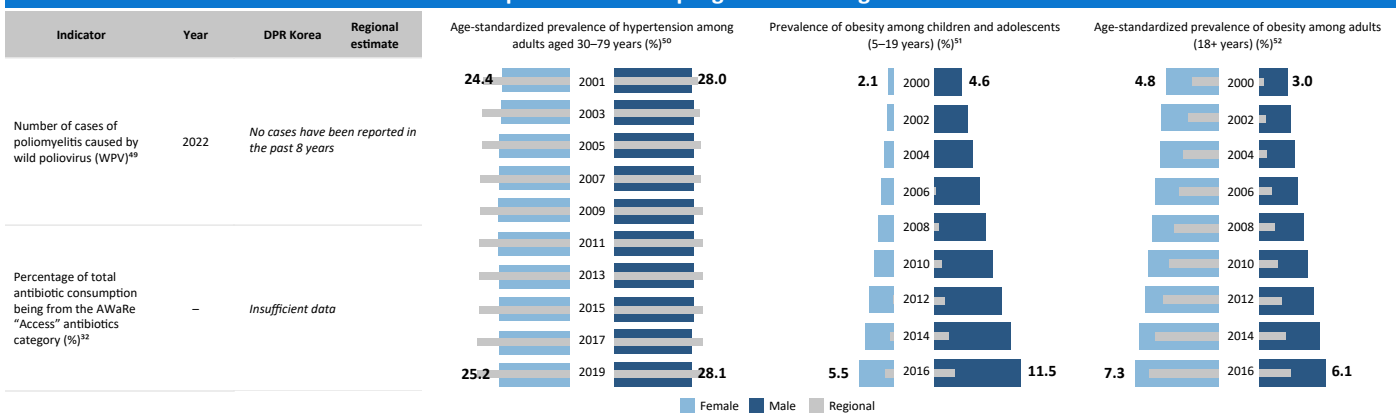
Indicator	SDG target	Year	DPR Korea	Regional estimate
<b>Essential medicines and vaccines</b>				
Diphtheria–tetanus–pertussis (DTP3) immunization coverage among 1-year-olds (%) <sup>7</sup>	3.b.1	2010	93.0	82.0
		2022	0.0	91.0
Measles-containing vaccine second-dose (MCV2) immunization coverage by the nationally recommended age (%) <sup>7</sup>	3.b.1	2012	76.0	43.0
		2022	0.0	85.0
Pneumococcal conjugate 3rd dose (PCV3) immunization coverage among 1-year-olds (%) <sup>30</sup>	3.b.1	2015	–	–4.0
		2022	–	58.0
Human papillomavirus (HPV) immunization coverage estimates among 15 year-old girls (%) <sup>7</sup>	3.b.1	–	–	–
Total net official development assistance to medical research and basic health sectors per capita (US\$), by recipient country <sup>31</sup>	3.b.2	–	–	–
		2021	0.03	1.0
Proportion of health facilities with a core set of relevant essential medicines available and affordable on a sustainable basis (%) <sup>32</sup>	3.b.3	–	–	–
<b>Health workforce density</b>				
Density of medical doctors (per 10 000 population) <sup>33</sup>	3.c.1	2003	31.4	–
		2017	36.7	–
Density of nursing and midwifery personnel (per 10 000 population) <sup>33</sup>	3.c.1	2003	39.3	–
		2017	44.3	–
Density of dentists (per 10 000 population) <sup>33</sup>	3.c.1	2003	1.7	–
		2017	2.2	–
Density of pharmacists (per 10 000 population) <sup>33</sup>	3.c.1	2003	3.1	–
		2017	4.0	–
<b>Early warning, risk reduction and management of national and global health risks</b>				
Average of 15 International Health Regulations (2005) Core Capacity scores <sup>12</sup>	3.d.1	2021	77.0	64.0
		2022	76.0	68.0
Percentage of bloodstream infections due to methicillin-resistant <i>Staphylococcus aureus</i> (%) <sup>34</sup>	3.d.2	–	–	–
Percentage of bloodstream infections due to <i>Escherichia coli</i> resistant to 3rd-generation cephalosporin (%) <sup>35</sup>	3.d.2	–	–	–
<b>Other health-related SDGs</b>				
<b>General government health expenditure</b>				
Domestic general government health expenditure (GGHE-D) as percentage of general government expenditure (GGE) (%) <sup>4</sup>	1.a.2	–	–	–
<b>Malnutrition</b>				
Stunting prevalence among children under 5 years of age (%) <sup>36</sup>	2.2.1	2010	29.2	41.5
		2022	16.8	30.1
Wasting prevalence among children under 5 years of age (%) <sup>53, 54</sup>	2.2.2	2009	5.2	–
		2017	2.5	–
Prevalence of overweight among children under 5 years of age (%) <sup>36</sup>	2.2.2	2010	1.4	3.0
		2022	2.8	3.8
Prevalence of anaemia among women of reproductive age (15–49 years) (%) <sup>37</sup>	2.2.3	2010	31.6	45.8
		2019	33.9	46.6
<b>Intimate partner violence</b>				
Proportion of ever-partnered women and girls aged 15–49 years subjected to physical and/or sexual violence by a current or former intimate partner in the previous 12 months (%) <sup>38</sup>	5.2.1	–	–	–
		2018	–	17.0
Proportion of ever-partnered women and girls aged 15–49 years subjected to physical and/or sexual violence by a current or former intimate partner in their lifetime (%) <sup>39</sup>	5.2.1	–	–	–
		2018	–	33.0

Note: En dash (–) implies relevant data are not available

Drinking water services and sanitation					
Indicator	SDG target	Year	DPR Korea	Regional estimate	
Proportion of the population using safely-managed drinking-water services (%) <sup>40</sup>	6.1.1	2010	67.8	-	
		2022	66.5	-	
Proportion of the population using safely-managed sanitation services (%) <sup>41</sup>	6.2.1	2010	-	27.8	
		2022	-	49.2	
Proportion of the population using a handwashing facility with soap and water (%) <sup>42</sup>	6.2.1	2015	-	63.5	
		2022	-	75.9	
Proportion of safely treated domestic and industrial wastewater flows (%) <sup>43</sup>	6.3.1	2020	-	-	
		2022	-	26.0	
Amount of water- and sanitation-related official development assistance that is part of a government-coordinated spending plan (constant 2020 US\$ millions) <sup>44</sup>	6.a.1	-	-	-	
		2020	0.2	1,178.0	
Clean household energy					
Proportion of the population with primary reliance on clean fuels and technology (%) <sup>45</sup>	7.1.2	2010	5.7	34.3	
		2021	12.5	67.5	
Ambient air pollution					
Annual mean concentrations of fine particulate matter (PM2.5) in urban areas (µg/m3) <sup>46</sup>	11.6.2	2010	53.4	50.8	
		2019	43.9	46.4	
Homicide and conflicts					
Number of victims of intentional homicide (per 100 000 population) <sup>47</sup>	16.1.1	2010	4.8	4.5	
		2019	4.2	3.8	
Birth registration					
Proportion of children under 5 years of age whose births have been registered with a civil authority, by age <sup>53, 54</sup>	16.9.1	2009	100.0	-	
		2017	-	-	
Cause-of-death data					
Completeness of cause-of-death data (%) <sup>48</sup>	17.19	-	-	-	
Proportion of countries that have conducted at least one population and housing census in the last 10 years (within/after year 2012) <sup>48</sup>	17.19	Last census date: 1 October 2019			

Note: En dash (-) implies relevant data are not available

### Additional SDG indicators to monitor GPW13 impact framework programmatic targets



### Reference

- World population prospects: 2022 revision. New York (NY): United Nations, Department of Economic and Social Affairs, Population Division; 2022 (<https://population.un.org/wpp/>, accessed 27 June 2023). **Reference year 2023.**
- United Nations, Department of Economic and Social Affairs, Population Division (2018). World Urbanization Prospects: The 2018 Revision, Online Edition (<https://population.un.org/wup/>, accessed 30 June 2023). **Reference year 2023.**
- World Development Indicators database, World Bank (<https://data.worldbank.org/>, accessed 03 July 2023).
- Global Health Expenditure Database (GHED). Geneva: World Health Organization. (<https://apps.who.int/nha/database/Select/Indicators/en>, accessed 30 June 2023).
- Global health estimates 2019: Life expectancy, 2000–2019. Geneva: World Health Organization; 2020 (<https://www.who.int/data/gho/data/themes/mortality-and-global-health-estimates/>, accessed 27 June 2023). **Reference year 2019.**
- United Nations, Department of Economic and Social Affairs, Population Division (2022). Estimates and Projections of Family Planning Indicators, 2022 revision (<https://population.un.org/dataportal/data/indicators/8/locations/50,64,408,356,360,462,104,524,144,764,626/start/2021/end/2021/table/pivotbylocation>, accessed 09 August 2023). **Reference year 2021.**
- WHO/UNICEF Joint Estimates of National Immunization Coverage (WUENIC), 2022 revision. (<https://immunizationdata.who.int/listing.html?topic=coverage&locations=>, accessed 08 July 2023)  
HPV Vaccination coverage by age 15, last dose, females  
See for Diphtheria-tetanus-pertussis (DTP3) immunization coverage among 1-year olds (%), country reported value: 2017=99.6; data source: DPR Korea Multiple Indicator Cluster Survey 2017  
See for Measles-containing-vaccine second-dose (MCV2) immunization coverage by the nationally recommended age (%), country reported value: 2017=98.6; data source: DPR Korea Multiple Indicator Cluster Survey 2017
- WHO estimates, 2022 edition; UHC Global Monitoring Report 2023..

10. *constant extrapolation*; UHC Global Monitoring Report 2023

**\*Non-elevated blood pressure: Proxy indicator.** Values have been rescaled for incorporation into the index calculations. Prevalence of non-raised blood pressure capped at minimum thresholds, corresponding to the maximum observed across all Member States. Prevalence of non-raised blood pressure: rescaled value =  $(X-40)/(100-40)*100$

**\*Mean fasting plasma glucose: Proxy indicator.** Mean fasting plasma glucose, which is a continuous measure (units of mmol/L), is converted to a scale of 0 to 100 using the minimum theoretical biological risk (5.1 mmol/L) and observed maximum across countries (7.4 mmol/L). - Mean FPG: rescaled value =  $(7.4 - \text{original value})/(7.4-5.1)*100$

**\*Tobacco non-use: Proxy indicator.** Values have been rescaled for incorporation into the index calculations. Prevalence of tobacco non-use are both capped at minimum thresholds, corresponding to the maximum observed across all Member States. Prevalence of tobacco non-use: rescaled value =  $(X-30)/(100-30)*100$

**\*Hospital bed density: Proxy indicator.** Hospital bed density is capped at maximum thresholds, and values above this threshold are held constant at 100. These thresholds are based on minimum values observed across OECD countries.

- hospital beds per 10,000: rescaled value =  $\text{minimum}(100, \text{original value} / 18*100)$

**\*Health worker density: Proxy indicator.** Health workforce density are both capped at maximum thresholds, and values above this threshold are held constant at 100. These thresholds are based on minimum values observed across OECD countries.

- physicians per 1,000: rescaled value =  $\text{minimum}(100, \text{original value} / 0.9*100)$

- psychiatrists per 100,000: rescaled value =  $\text{minimum}(100, \text{original value} / 1*100)$

- surgeons per 100,000: rescaled value =  $\text{minimum}(100, \text{original value} / 14*100)$

11. WHO/UNICEF Joint Monitoring Programme for Water Supply, Sanitation and Hygiene (JMP) (<https://washdata.org>, accessed 09 August 2023)

12. Global Health Observatory data. Geneva: WHO. (<https://www.who.int/data/gho/data/indicators/indicator-details/GHO/sdghi2021>, accessed 05 July 2023)

**\*IHR core capacity index: Proxy indicator for health security**

13. Trends in maternal mortality 2000 to 2020: estimates by WHO, UNICEF, UNFPA, World Bank Group and UNDESA/Population Division. Geneva: WHO; 2023. (<https://apps.who.int/iris/rest/bitstreams/1492307/retrieve>, accessed 11 April 2023)

14. UN Inter-agency Group for Child Mortality Estimation (UN IGME) in 2021 (<http://data.unicef.org>, accessed 04 July 2023)

See for Neonatal mortality rate, country reported value: 2017=9; data source: DPR Korea Multiple Indicator Cluster Survey 2017

See for Under-five mortality rate, country reported value: 2017=17; data source: DPR Korea Multiple Indicator Cluster Survey 2017

15. Global Health Observatory data. Geneva: WHO. ([https://www.who.int/data/gho/data/indicators/indicator-details/GHO/new-hiv-infections-\(per-1000-uninfected-population\)](https://www.who.int/data/gho/data/indicators/indicator-details/GHO/new-hiv-infections-(per-1000-uninfected-population)), accessed 04 July 2023)

16. Global Health Observatory data. Geneva: WHO. ([https://www.who.int/data/gho/data/indicators/indicator-details/GHO/incidence-of-tuberculosis-\(per-100-000-population-per-year\)](https://www.who.int/data/gho/data/indicators/indicator-details/GHO/incidence-of-tuberculosis-(per-100-000-population-per-year)), accessed 04 July 2023)

17. *calculated*; World malaria report

18. Global Health Observatory data. Geneva: WHO. ([https://www.who.int/data/gho/data/indicators/indicator-details/GHO/hepatitis-b-surface-antigen-\(hbsag\)-prevalence-among-children-under-5-years](https://www.who.int/data/gho/data/indicators/indicator-details/GHO/hepatitis-b-surface-antigen-(hbsag)-prevalence-among-children-under-5-years), accessed 04 July 2023)

19. Global Health Observatory data. Geneva: WHO. (<https://www.who.int/data/gho/data/indicators/indicator-details/GHO/reported-number-of-people-requiring-interventions-against-ntds>, accessed 04 July 2023)

20. Global Health Observatory data. Geneva: WHO. ([https://www.who.int/data/gho/data/indicators/indicator-details/GHO/probability-of-dying-between-exact-ages-30-and-70-from-any-of-cardiovascular-disease-cancer-diabetes-or-chronic-respiratory-\(-\)](https://www.who.int/data/gho/data/indicators/indicator-details/GHO/probability-of-dying-between-exact-ages-30-and-70-from-any-of-cardiovascular-disease-cancer-diabetes-or-chronic-respiratory-(-)), accessed 04 July 2023)

21. Global Health Observatory data. Geneva: WHO. ([https://www.who.int/data/gho/data/indicators/indicator-details/GHO/suicide-mortality-rate-\(per-100-000-population\)](https://www.who.int/data/gho/data/indicators/indicator-details/GHO/suicide-mortality-rate-(per-100-000-population)), accessed 04 July 2023)

22. Global Health Observatory data. Geneva: WHO. ([https://www.who.int/data/gho/data/indicators/indicator-details/GHO/total-\(recorded-unrecorded\)-alcohol-per-capita-\(15-\)-consumption](https://www.who.int/data/gho/data/indicators/indicator-details/GHO/total-(recorded-unrecorded)-alcohol-per-capita-(15-)-consumption), accessed 04 July 2023)

23. Global Health Observatory data. Geneva: WHO. ([https://www.who.int/data/gho/data/indicators/indicator-details/GHO/estimated-road-traffic-death-rate-\(per-100-000-population\)](https://www.who.int/data/gho/data/indicators/indicator-details/GHO/estimated-road-traffic-death-rate-(per-100-000-population)), accessed 04 July 2023)

24. Most recent updates provided by the Population Division, of the UN Department of Economic and Social Affairs to the SDG Indicators, Global SDG Database (<https://unstats.un.org/sdgs/indicators/database>, accessed 04 July 2023). Global and regional aggregates are from the World population prospects: the 2022 revision. New York: United Nations, Department of Economic and Social Affairs, Population Division

See for Adolescent birth rate (per 1000 women aged 15–19 years), country reported value: 2017=1; data source: DPR Korea Multiple Indicator Cluster Survey 2017

25. Global Health Observatory data. Geneva: WHO. ([https://www.who.int/data/gho/data/indicators/indicator-details/GHO/ambient-and-household-air-pollution-attributable-death-rate-\(per-100-000-population-age-standardized\)](https://www.who.int/data/gho/data/indicators/indicator-details/GHO/ambient-and-household-air-pollution-attributable-death-rate-(per-100-000-population-age-standardized)), accessed 25 May 2023)

26. Global Health Observatory data. Geneva: WHO. ([https://www.who.int/data/gho/data/indicators/indicator-details/GHO/mortality-rate-attributed-to-exposure-to-unsafe-wash-services-\(per-100-000-population\)-sdg-3-9-2](https://www.who.int/data/gho/data/indicators/indicator-details/GHO/mortality-rate-attributed-to-exposure-to-unsafe-wash-services-(per-100-000-population)-sdg-3-9-2), accessed 05 July 2023)

27. Global Health Observatory data. Geneva: WHO. (<https://www.who.int/data/gho/data/themes/topics/indicator-groups/poison-control-and-unintentional-poisoning>, accessed 05 July 2023)

28. WHO global report on trends in prevalence of tobacco use 2000–2025, fourth edition. Geneva: WHO; 2021 (<https://www.who.int/publications/i/item/9789240039322>, accessed 05 July 2023)

29. Global Health Observatory data. Geneva: WHO. (<https://www.who.int/data/gho/data/themes/topics/sdg-target-3-a-tobacco-control>, accessed 31 July 2023)

30. Global Health Observatory data. Geneva: WHO.

([https://www.who.int/data/gho/data/indicators/indicator-details/GHO/pneumococcal-conjugate-vaccines-\(pcv3\)-immunization-coverage-among-1-year-olds-\(-\)](https://www.who.int/data/gho/data/indicators/indicator-details/GHO/pneumococcal-conjugate-vaccines-(pcv3)-immunization-coverage-among-1-year-olds-(-)), accessed 31 July 2023)

31. Global Health Observatory data. Geneva: WHO. (<https://www.who.int/data/gho/data/indicators/indicator-details/GHO/total-net-official-development-assistance-to-medical-research-and-basic-health-sectors-per-capita>, accessed 05 July 2023)

32. World health statistics 2023: monitoring health for the SDGs, Sustainable Development Goals. Geneva: WHO; 2023

33. Global Health Workforce Statistics [online database]. Global Health Observatory data. Geneva: WHO (<https://www.who.int/data/gho/data/themes/topics/topic-details/GHO/health-workforce>, accessed 05 July 2023)

34. Global Health Observatory data. Geneva: WHO. (<https://www.who.int/data/gho/data/indicators/indicator-details/GHO/sdg-3-d-2-amr-infect-mrsa>, accessed 05 July 2023)

35. Global Health Observatory data. Geneva: WHO. ([https://www.who.int/data/gho/data/indicators/indicator-details/GHO/sdg-3-d-2--proportion-of-bloodstream-infections-due-to-selected-antimicrobial-resistant-organisms--median-\(-\)](https://www.who.int/data/gho/data/indicators/indicator-details/GHO/sdg-3-d-2--proportion-of-bloodstream-infections-due-to-selected-antimicrobial-resistant-organisms--median-(-)), accessed 05 July 2023)

36. Levels and trends in child malnutrition. UNICEF/WHO/World Bank Group Joint Child Malnutrition Estimates. New York (NY), Geneva and Washington (DC): United Nations Children's Fund, WHO and the World Bank Group; 2023. (<https://www.who.int/teams/nutrition-and-food-safety/monitoring-nutritional-status-and-food-safety-and-events/joint-child-malnutrition-estimates>, accessed 05 July 2023)

See for Stunting prevalence among children under 5 years of age (%), country reported value: 2017=19.1; data source: DPR Korea Multiple Indicator Cluster Survey 2017

See for Prevalence of overweight among children under 5 years of age (%), country reported value: 2017=2.3; data source: DPR Korea Multiple Indicator Cluster Survey 2017

37. Global Health Observatory data. Geneva: WHO. ([https://www.who.int/data/gho/data/indicators/indicator-details/GHO/prevalence-of-anaemia-in-women-of-reproductive-age-\(-\)](https://www.who.int/data/gho/data/indicators/indicator-details/GHO/prevalence-of-anaemia-in-women-of-reproductive-age-(-)), accessed 30 June 2023)

38. Global Health Observatory data. Geneva: WHO. ([https://www.who.int/data/gho/data/indicators/indicator-details/GHO/intimate-partner-violence-prevalence-among-ever-partnered-women-\(-\)](https://www.who.int/data/gho/data/indicators/indicator-details/GHO/intimate-partner-violence-prevalence-among-ever-partnered-women-(-)), accessed 30 June 2023)

39. Global Health Observatory data. Geneva: WHO. (<https://www.who.int/data/gho/data/indicators/indicator-details/GHO/intimate-partner-violence-lifetime>, accessed 30 June 2023)

40. Global Health Observatory data. Geneva: WHO. ([https://www.who.int/data/gho/data/indicators/indicator-details/GHO/population-using-safely-managed-drinking-water-services-\(-\)](https://www.who.int/data/gho/data/indicators/indicator-details/GHO/population-using-safely-managed-drinking-water-services-(-)), accessed 31 July 2023)

See for country reported value: 2017=60.9; data source: DPR Korea Multiple Indicator Cluster Survey 2017

41. Global Health Observatory data. Geneva: WHO. ([https://www.who.int/data/gho/data/indicators/indicator-details/GHO/population-using-safely-managed-sanitation-services-\(-\)](https://www.who.int/data/gho/data/indicators/indicator-details/GHO/population-using-safely-managed-sanitation-services-(-)), accessed 31 July 2023)

See for country reported value: 2017=81.5; data source: DPR Korea Multiple Indicator Cluster Survey 2017

42. Global Health Observatory data. Geneva: WHO. ([https://www.who.int/data/gho/data/indicators/indicator-details/GHO/population-with-basic-handwashing-facilities-at-home-\(-\)](https://www.who.int/data/gho/data/indicators/indicator-details/GHO/population-with-basic-handwashing-facilities-at-home-(-)), accessed 31 July 2023)

43. United Nations Global SDG Indicators Data Platform (<https://unstats.un.org/sdgs/dataportal>, accessed 05 July 2023)

44. Global Health Observatory data. Geneva: WHO. (<https://www.who.int/data/gho/data/indicators/indicator-details/GHO/amount-of-water-and-sanitation-related-official-development-assistance-that-is-part-of-a-government-coordinated-spending-plan>, accessed 05 July 2023)

45. Global Health Observatory data. Geneva: WHO. (<https://www.who.int/data/gho/data/indicators/indicator-details/GHO/gho-phe-primary-reliance-on-clean-fuels-and-technologies-proportion>, accessed 05 July 2023)

See for country reported value: 2017=10.1; data source: DPR Korea Multiple Indicator Cluster Survey 2017

46. Global Health Observatory data. Geneva: WHO. ([https://www.who.int/data/gho/data/indicators/indicator-details/GHO/concentrations-of-fine-particulate-matter-\(pm2-5\)](https://www.who.int/data/gho/data/indicators/indicator-details/GHO/concentrations-of-fine-particulate-matter-(pm2-5)), accessed 25 May 2023)

47. Global Health Observatory data. Geneva: WHO. (<https://www.who.int/data/gho/data/indicators/indicator-details/GHO/estimates-of-rates-of-homicides-per-100-000-population>, accessed 05 July 2023)

48. The United Nations Statistics Division - Demographic and Social Statistics (<https://unstats.un.org/unsd/demographic-social/census/censuses/>, accessed on 08 August 2023)

49. Global Health Observatory data. Geneva: WHO. (<https://www.who.int/data/gho/data/indicators/indicator-details/GHO/poliomyelitis--number-of-reported-cases>, accessed 25 May 2023)

50. Global Health Observatory data. Geneva: WHO. (<https://www.who.int/data/gho/data/indicators/indicator-details/GHO/prevalence-of-hypertension-among-adults-aged-30-79-years>, accessed 25 May 2023)

51. Global Health Observatory data. Geneva: WHO. ([https://www.who.int/data/gho/data/indicators/indicator-details/GHO/prevalence-of-obesity-among-children-and-adolescents-bmi-2-standard-deviations-above-the-median-\(crude-estimate\)-\(-\)](https://www.who.int/data/gho/data/indicators/indicator-details/GHO/prevalence-of-obesity-among-children-and-adolescents-bmi-2-standard-deviations-above-the-median-(crude-estimate)-(-)), accessed 25 May 2023)

52. Global Health Observatory data. Geneva: WHO. ([https://www.who.int/data/gho/data/indicators/indicator-details/GHO/prevalence-of-obesity-among-adults-bmi--30-\(age-standardized-estimate\)-\(-\)](https://www.who.int/data/gho/data/indicators/indicator-details/GHO/prevalence-of-obesity-among-adults-bmi--30-(age-standardized-estimate)-(-)), accessed 25 May 2023)

53. DPR Korea Multiple Indicator Cluster Survey 2017, Survey Findings Report. Pyongyang: Central Bureau of Statistics of the DPR Korea, United Nations Children's Fund (UNICEF); 2017

54. Central Bureau of Statistics (CBS), UNICEF. DPR Korea Multiple Indicator Cluster Survey 2009, Final Report. Pyongyang, DPR Korea: Central Bureau of Statistics (CBS), UNICEF; 2010

55. DPRK 2004 Nutrition Assessment Report of Survey Results. DPR Korea: Central Bureau of Statistics (CBS), Institute of Child Nutrition, United Nations Children's Fund (UNICEF), WFP; 2005

56. Reproductive Health Survey 2002

57. Central Bureau of Statistics, United Nations Children's Fund (UNICEF). Report of the Second Multiple Indicator Cluster Survey 2000, DPRK. DPR Korea; 2000