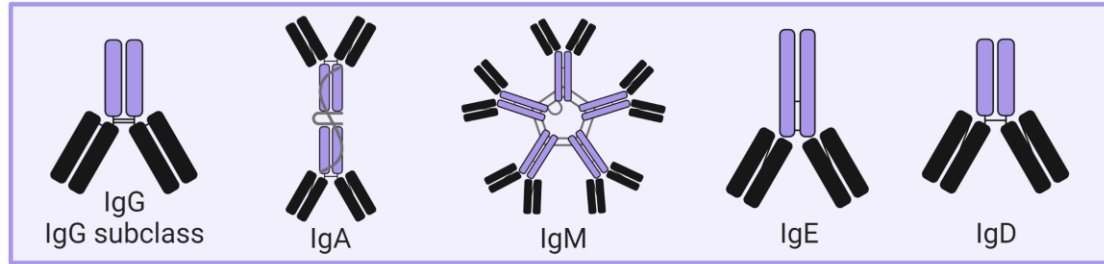


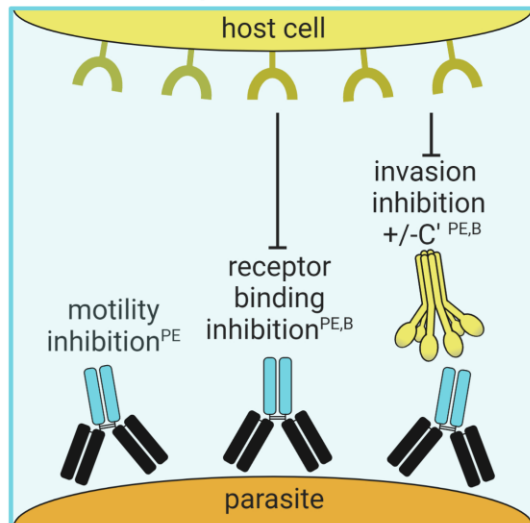


# Towards better correlates – antibody Fc mediated functions

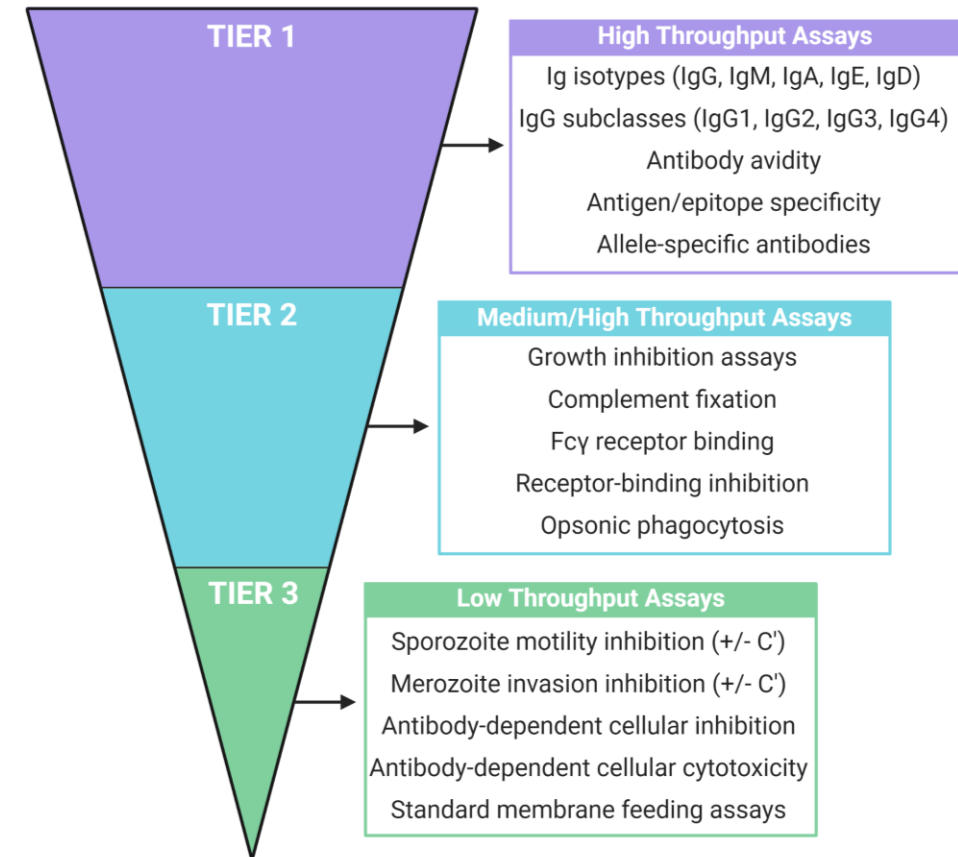
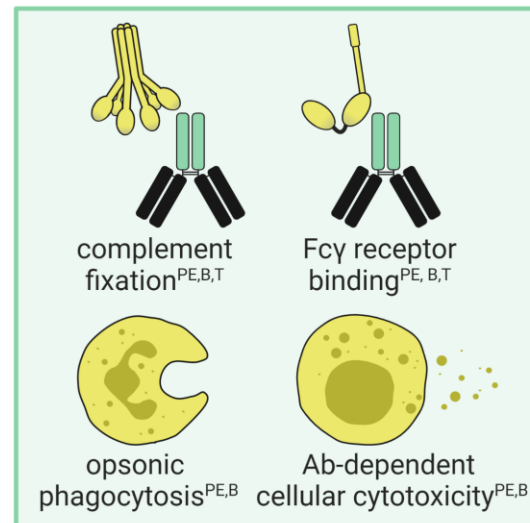
## 1. Standard Antibody Parameters



## 2. Antibody Inhibitory Functions



## 3. Antibody Fc-Dependent Functions





## Burnet Institute expertise/resources

- Candidate antigen design and epitope discovery (Structure-based vaccine design)
- Cellular Immunology (B and T cell memory)
- Population studies and Pre-clinical and early phase clinical trials
- Key resources and reagents including - assay design and standardization of assays
- Burnet mRNA program (supported by Vic government)

