

# WHAT IS HEALTH IN ALL POLICIES?

Good health requires policies that actively support health



It requires different sectors working together, for example:



HEALTH



TRANSPORT



HOUSING



WORK



NUTRITION



WATER & SANITATION

To ensure all people have equal opportunities to achieve the highest level of health

## HOW DOES IT WORK?

Here is one example:

Worldwide

**1 IN 8 DEATHS**

is linked to

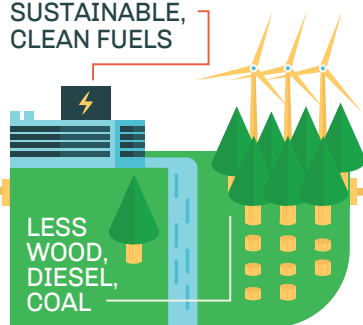
**AIR POLLUTION EXPOSURE**



TO TACKLE AIR POLLUTION COLLABORATION IS NEEDED

### CLEAN ENERGY

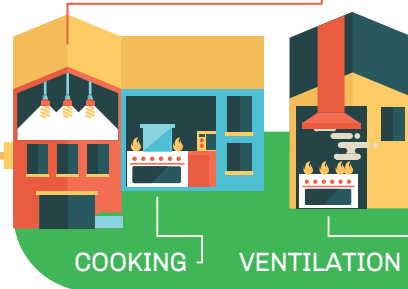
SUSTAINABLE,  
CLEAN FUELS



LESS  
WOOD,  
DIESEL,  
COAL

### HOUSING

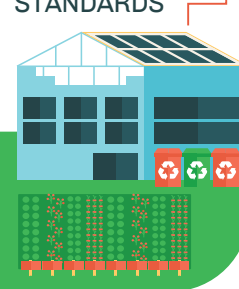
HEATING AND LIGHTING



COOKING

VENTILATION

CONSTRUCTION  
STANDARDS



### INDUSTRY

REPLACE SMOKE STACKS



WASTE  
MANAGEMENT

### LOCAL AND REGIONAL AUTHORITIES

PLANNING CODES



TAX  
INCENTIVES

### WASTE MANAGEMENT

EMISSION CONTROLS

BIO-WASTE  
MANAGEMENT



REDUCE, REUSE,  
RECYCLE

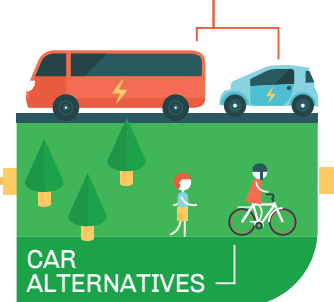
### URBAN PLANNING

COMPACT AND EFFICIENT



### TRANSPORT

LOW EMISSION  
VEHICLES



CAR  
ALTERNATIVES

### HEALTH MINISTRY

TRACK HEALTH IMPACT



The health sector drives conversations within all sectors to keep good health at the top of everyone's mind

