

# PROGRAMME REVIEW WORKSHOP FOR MATERNAL, NEWBORN, CHILD AND ADOLESCENT HEALTH

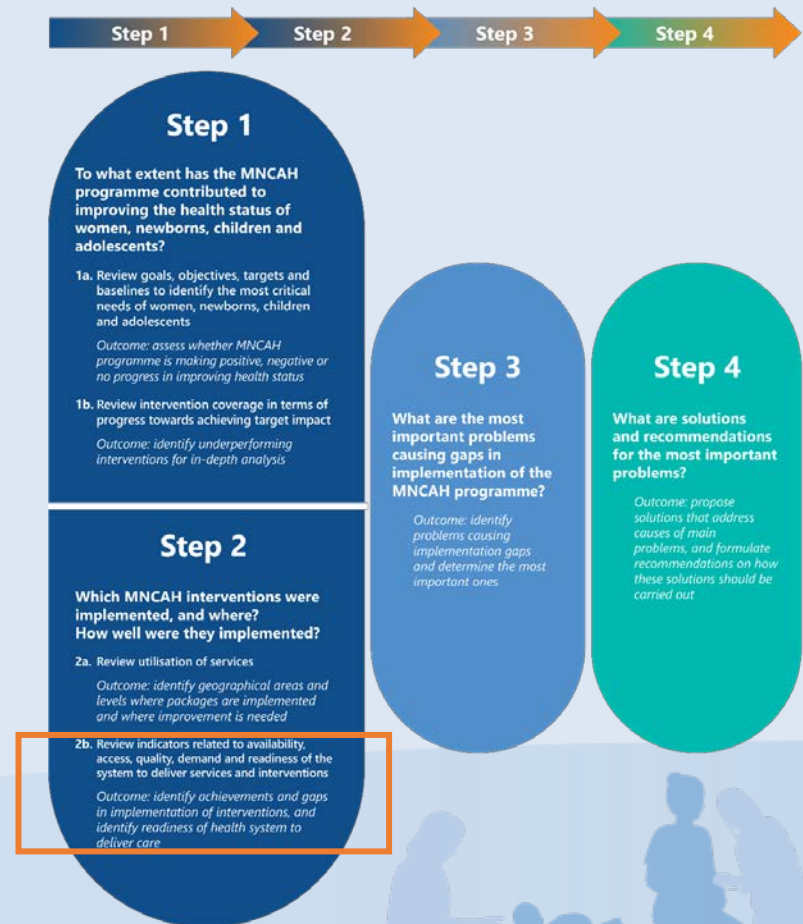
GROUP WORK  
Step 2B



World Health  
Organization

## STEP 2B: How well were the MNCAH interventions/packages implemented?

- During Step 2B, we will review indicators related to availability, access, quality, demand, and readiness of the health system to deliver these interventions.
- The outcomes are to identify achievements and gaps in implementation of each intervention or package selected for further analysis (in previous steps). The readiness gaps identified during this step inform the analysis of problems and identification of solutions for impact.



## STEP 2B: Group work discussion questions

---

- **Please consider the questions below and fill in information in the slides below. You may add additional slides if more space is needed.**
- For each intervention/package, review and assess data or information available on availability, access, quality or demand:
  - Are there data on availability, quality, access and demand?
    - *If no data are available: the group can provide any knowledge or qualitative information from other sources.*
  - Where data are available, are there significant variations in availability, access, quality or demand by equity differentials (e.g., socioeconomic status, wealth quintile, geographical area, urban/rural, sex, race/ethnicity, or education level)?
  - What are the major achievements and gaps in availability, access, quality and demand for each intervention/package?
- What are the major achievements and gaps in readiness of the health system to deliver the interventions and services?

*If the MNCAH programme review data tool (Excel) has been used for this workshop, you may wish to refer to the information/data summarized in the tool to help complete this step.*

# Availability, access, quality and demand: Definitions

---

- **Availability** is the extent that the health services (preventive and treatment interventions) are available to those who need them. Availability is not only the presence of a health facility in a geographic area; availability of an intervention package requires implementation of that package.
- **Access** means that members of the target population are able to reach and use the health services, when they are available. Possible barriers to access include geographic distance, financial barriers, cultural barriers, or time limitations.
- **Quality** means that the health services are provided according to technical standards, and in a way that is appropriate for the target population. Increasing the quality of a service often increases demand for it.
- **Demand** means that clients are engaged and motivated to seek and make use of the health services. Improved demand indicates that clients have knowledge of the availability and benefits of the services and are motivated to use them.

For each intervention or intervention package, are data or information available on availability, access, quality or demand?

	Data or information available related to availability, access, quality or demand?			
Intervention / intervention package	Availability	Access	Quality	Demand

For interventions / packages where data or information on availability, access, quality or demand are available, please summarize relevant points related to these.

Intervention / intervention package	Availability	Access	Quality	Demand

If information is available by equity markers, are there significant variations in health status indicators by equity markers, such as socioeconomic status, wealth quintile, geographic areas, urban/rural, sex, and/or education?

Intervention / intervention package	Variations by equity markers ( <i>where data/information is available</i> )

## What are the major achievements and gaps in availability, access, quality and demand for each intervention/package?

[illegible]



## What are the major achievements and gaps in readiness of the health system to deliver the interventions/packages?

[illegible]