

Situation Update #129 - Coronavirus Disease 2019 (COVID-19)

WHO Country Office for Nepal

Reporting Date: 26 September – 2 October 2022 (EPI Week 39)

HIGHLIGHTS

(Data published in the MoHP Situation Report as of 02 October 2022 and same data published in EDCD Report as of 03 October 2022)

- Of the total RT-PCR confirmed COVID-19 cases, 98.7% (986,882) of cases have recovered, 0.1% (889) are active cases and 1.2% (12,018) are deaths.
- Only Kathmandu district reported more than 200 active cases.
- Among the new RT-PCR confirmed cases (214) reported this week, 42.5% (91) are from Kathmandu district followed by Chitwan district 15% (32). Majority of the new cases 50.5% (108) have been reported from Kathmandu Valley (Kathmandu, Lalitpur and Bhaktapur), Bagmati Province.

SITUATION OVERVIEW

(Data as of 02 October 2022)

NEPAL

Cumulative confirmed cases

RT-PCR: 999,789

Antigen RDT: 152,060

Cumulative deaths: 12,018

Cumulative tests

RT-PCR: 5,939,084

Antigen RDT: 1,421,557

SOUTH-EAST ASIA REGION

Cumulative cases (%)

60,302,313 (10%)

Cumulative deaths (%)

797,651 (12%)

GLOBAL

Cumulative cases (%)

615,337,332 (100%)

Cumulative deaths (%)

6,525,708 (100%)

• COVID-19 vaccination coverage status (as of 28 September 2022)

Covi-AstraZeneca		Vero Cell		Janssen		Pfizer		Moderna	
First dose	5,560,795	First dose	10,378,535	Single dose	3,523,952	First dose	4,502,420	First dose	3,224,163
Second dose	4,813,228	Second dose	9,250,128			Second dose	2,257,293	Second dose	2,823,075

NEPAL EPIDEMIOLOGICAL SITUATION

- Since 9 May 2021, all 7 provinces in the country are experiencing community transmission.
- Since the start of the COVID-19 pandemic, (781,714/999,789) of RT-PCR confirmed cases were reported from three provinces, namely- Province 1, Bagmati Province and Lumbini Province. The Kathmandu valley area (Kathmandu, Bhaktapur, Lalitpur) in Bagmati Province has substantially high case load with 44.1% of national total (441,078/999,789), and 81.4% of the provincial total (441,078/541,827).
- Province-wise RT-PCR test positivity rate in Epi Week 39 ranged from 0.0% (Madhesh province) to 18.2% (Sudurpashchim province), with a national positivity rate at 2.8%. Karnali province did not report any RT-PCR test performed in the last week.
- Nepal reported a 36% decrease in the number of new RT-PCR confirmed cases (n=214) in Epi week 39 compared to that in the previous week. Of these total cases reported last week, 83% of the cases have been reported from Province 1, Bagmati, and Lumbini province.
- Nepal reported 1 death in Epi week 39, same as that in the previous week.

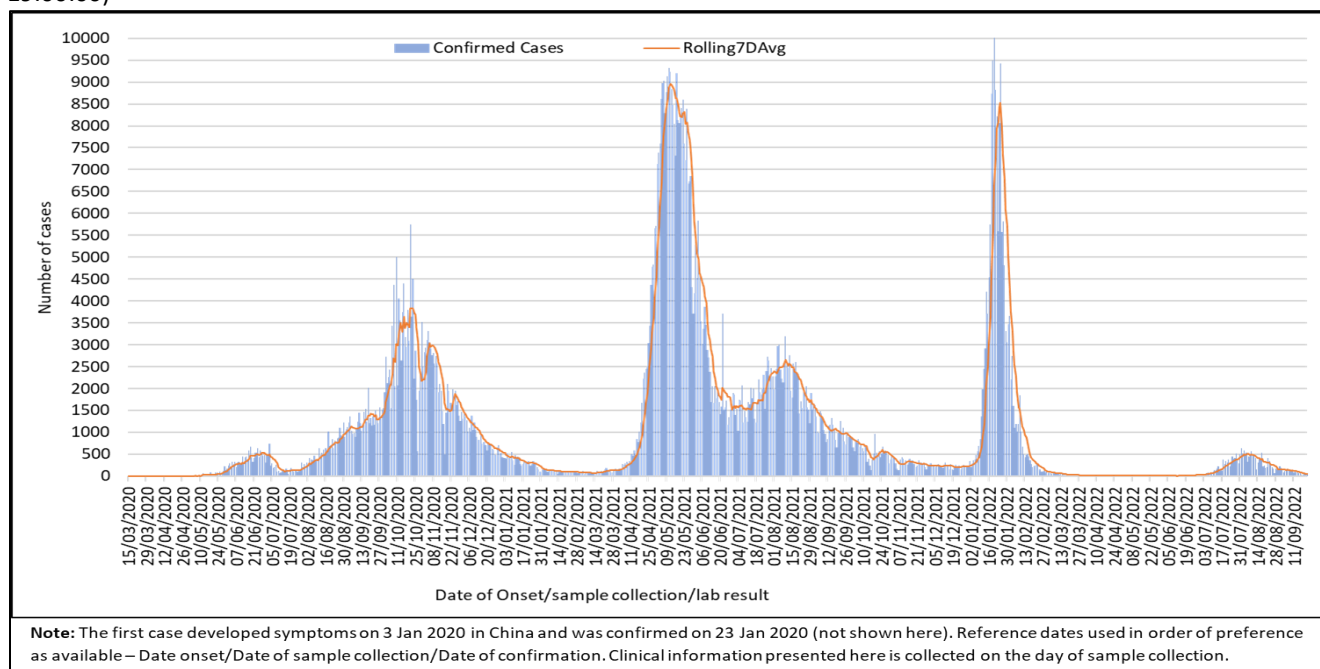
National Influenza Surveillance

- WHO Nepal facilitated National Influenza Center (NIC)-NPHL in conducting a virtual meeting on 27 September 2022 with the sentinel sites of NIC-NPHL to orient and sensitize the sentinel sites for implementation of Influenza-SARS-CoV-2 surveillance at their facilities. The focal lab personnel and focal physician from the sentinel sites participated in the meeting.
- National Influenza Center (NIC) - NPHL reported 7 diagnostic Influenza samples on Epi-week 39 (25 Sep-2 Oct 2022).
 - None of the samples tested positive for both Influenza and SARS-CoV-2.
 - One sample tested Positive for Influenza A (H1N1pdm09).
- Provincial Public Health Laboratory (PPHLs) in Province 1, Madhesh, Gandaki, Lumbini, and Karnali Provinces reported testing of 75 samples for Influenza-SARS-CoV-2 using Multiplex kit on Epi-week 39. Three samples tested positive for Influenza A. A total of 1,199 samples have been tested by PPHLs till 2 October 2022.
- From 3 January 2022 until 2 October 2022:
 - A total of 567 samples have been tested positive for Influenza (2 Influenza B, 262 Influenza A/H3, 296 Influenza A(H1N1pdm09), and 7 Influenza A (subtyping to be done) from 5,923 samples (Sentinel and non-sentinel samples including SARS-CoV-2 Negative SARI and ILI cases).
 - Similarly, 328 samples have tested positive for SARS-CoV-2 from 2,074 Influenza negative samples (Sentinel/non-sentinel ILI/SARI samples).¹

WHO SEAR countries: Number of COVID-19 confirmed cases and cumulative incidence rate (per 100,000). Link Here- <https://worldhealthorg.shinyapps.io/covid/>

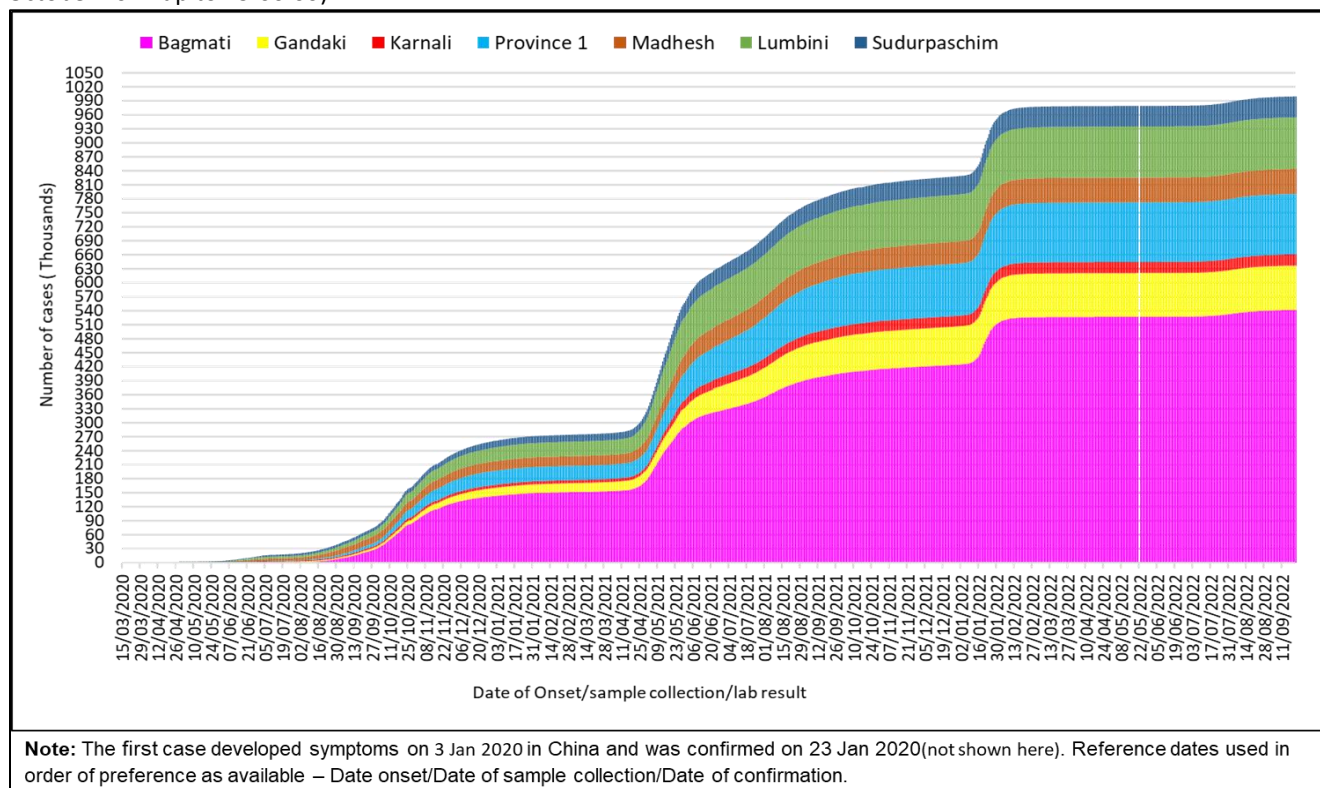
¹ These positive cases are included in the COVID-19 database

Figure 1: RT-PCR confirmed COVID-19 cases and average number of COVID-19 cases over the last seven days, by date of onset/sample/confirmation (N= 999,789)(Data reported on 02 October 2022 up to 19:00:00)



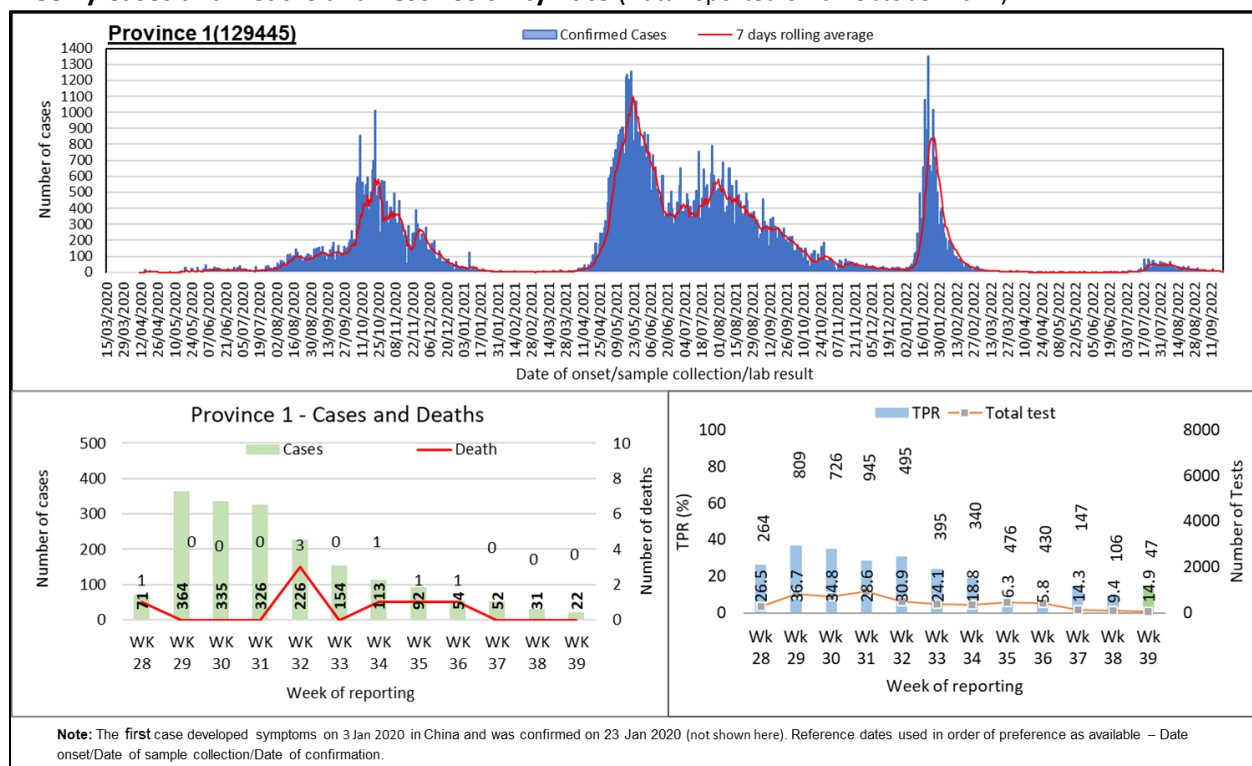
At national level, the first wave of cases between July 2020 and February 2021 was followed by the second wave from the middle of March 2021. Since the middle of December 2021, a third wave of cases soared up exceeding the highest number of single day cases reported in the past surges towards the end of January 2022. Since the middle of May 2022, cases were steadily rising in an increasing trend, however the trend is continuously declining now.

Figure 2: Cumulative case count of RT-PCR confirmed COVID-19 cases (N= 999,789)(Data reported on 02 October 2022 up to 19:00:00)



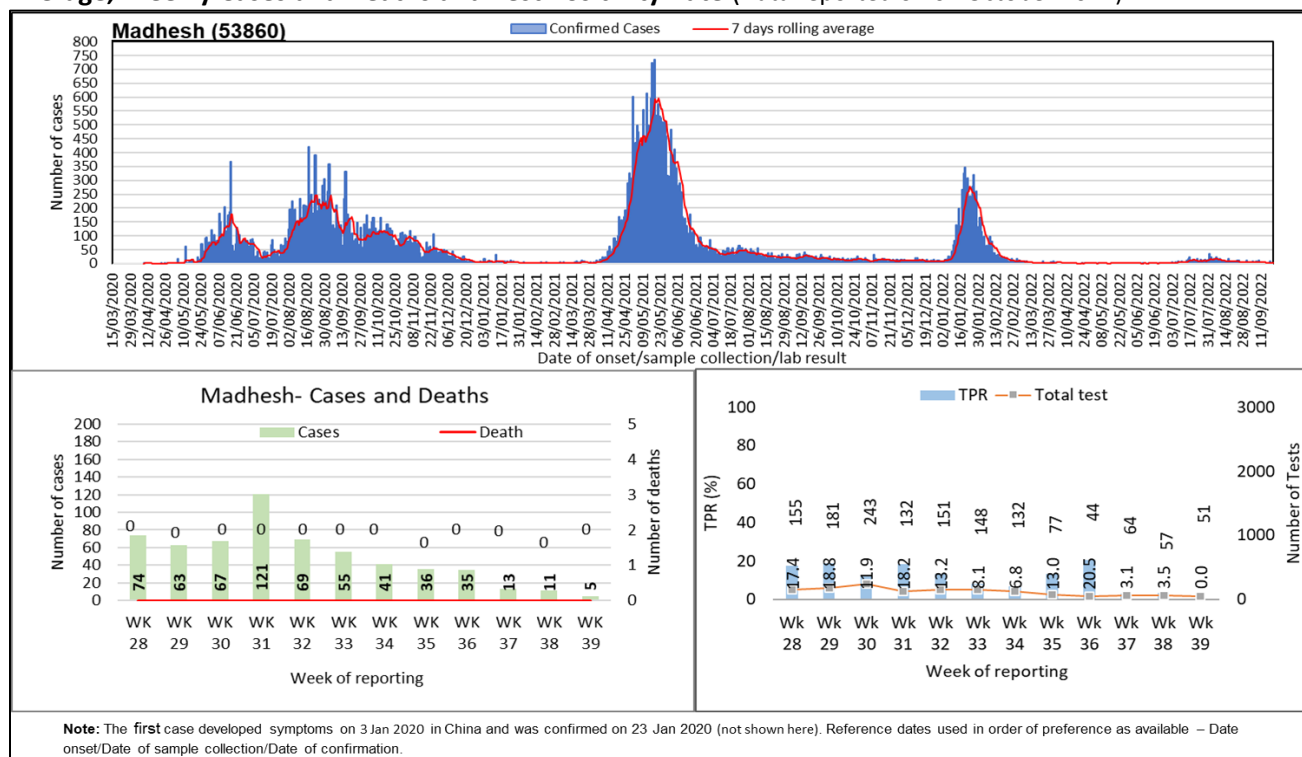
The cumulative case incidence has been increasing in Nepal since the first case confirmed on 23 January 2020. Cases have been largely reported from Bagmati Province followed by Province 1 and Lumbini Province.

Figure 3A1: RT- PCR confirmed COVID-19 cases in Province 1: Trend of Cases, 7 days Rolling Average, Weekly Cases and Deaths and Test Positivity Rate (Data reported on 02 October 2022)



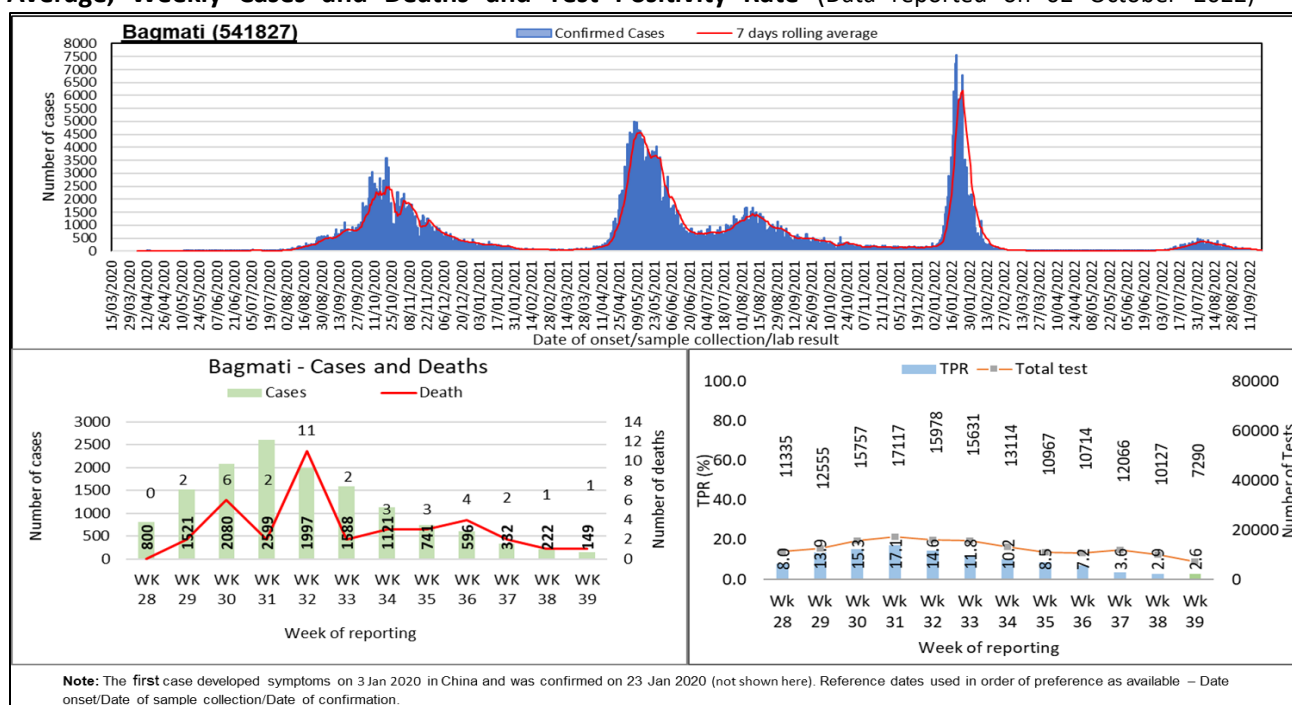
There were 22 new cases reported in the past week in Province 1. Cases have decreased by 29% in the past week compared to the previous week. There was no death reported in the past week, same as that in the previous week. The test positivity rate in Province 1 decreased to 14.9% in the past week. A total of 47 tests were performed in the past week, 56% less than that in the previous week.

Figure 3A2: RT- PCR confirmed COVID-19 cases in Madhesh Province: Trend of Cases, 7 days Rolling Average, Weekly Cases and Deaths and Test Positivity Rate (Data reported on 02 October 2022)



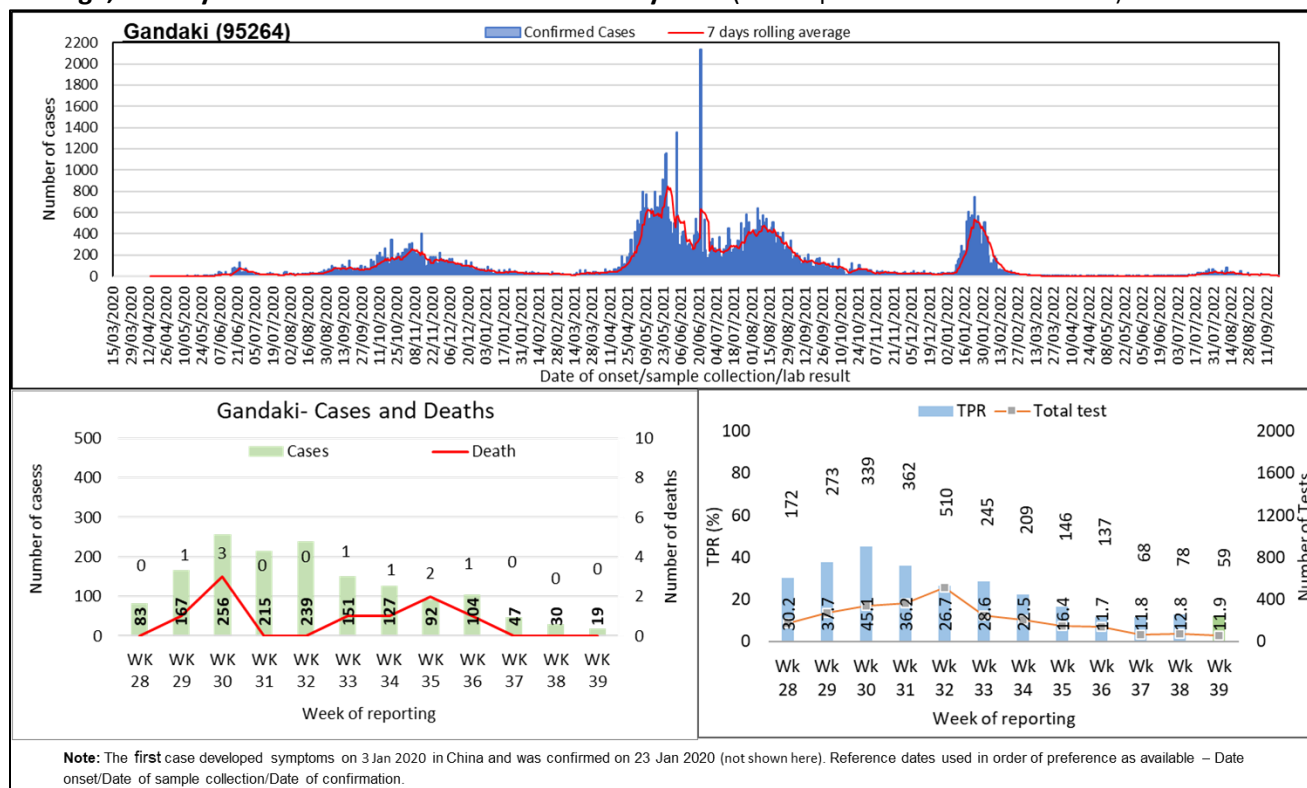
There were 5 new cases reported in the past week in Madhesh province. Cases have decreased by 55% in the past week compared to the previous week. There was no death reported in the past week, same as that in the previous week. The test positivity rate in Madhesh decreased to 0.0% in the past week. A total of 51 tests were performed in the past week, 11% less than that in the previous week.

Figure 3A3: RT- PCR confirmed COVID-19 cases in Bagmati Province: Trend of Cases, 7 days Rolling Average, Weekly Cases and Deaths and Test Positivity Rate (Data reported on 02 October 2022)



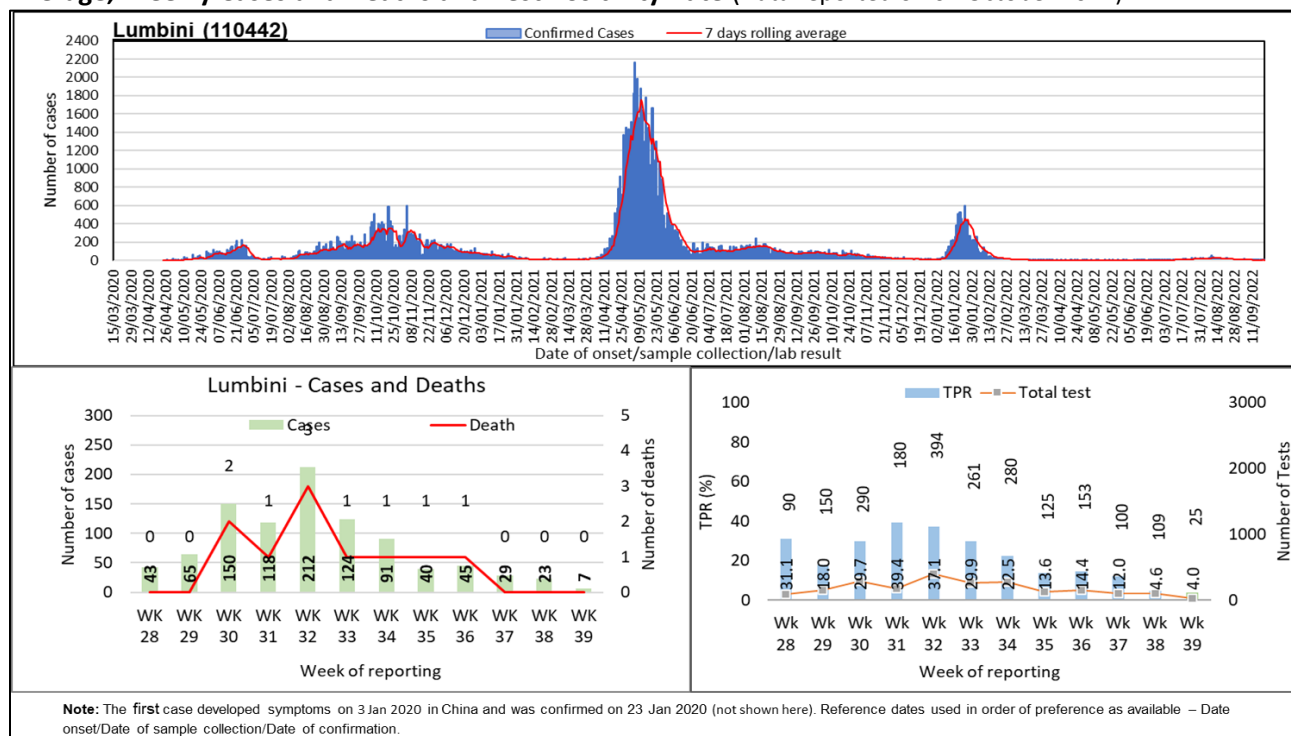
In Bagmati, 149 new cases were reported in the past week. Cases have decreased by 33% in the past week compared to the previous week. There was 1 death reported in the past week, same as that in the previous week. The test positivity rate in Bagmati decreased to 2.6% in the past week. A total of 7290 tests were performed in the past week, 28% less than that in the previous week.

Figure 3A4: RT- PCR confirmed COVID-19 cases in Gandaki Province: Trend of Cases, 7 days Rolling Average, Weekly Cases and Deaths and Test Positivity Rate (Data reported on 02 October 2022)



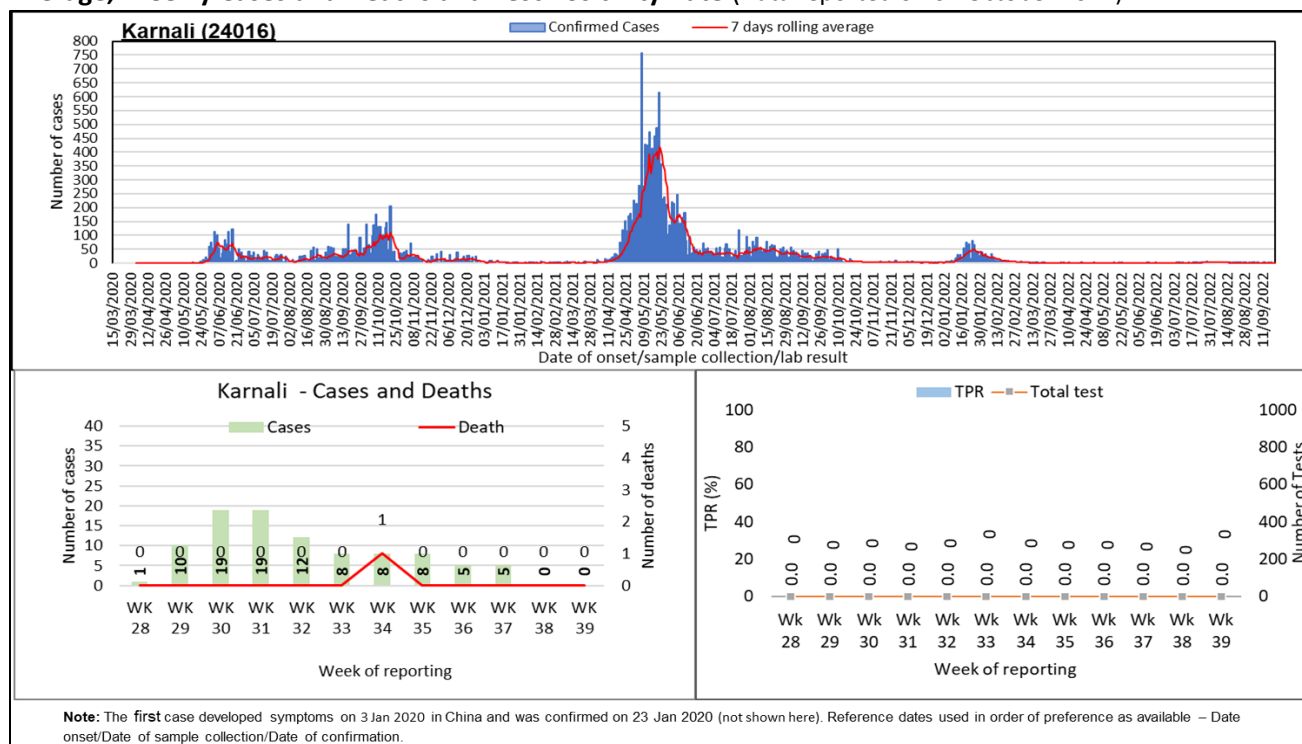
In Gandaki, 19 new cases were reported in the past week. Cases have decreased by 37% in the past week compared to the previous week. There was no death reported in the past week, same as that in the previous week. The test positivity rate in Gandaki decreased to 11.9% in the past week. A total of 59 tests were performed in the past week, 24% less than that in the previous week.

Figure 3A5: RT- PCR confirmed COVID-19 cases in Lumbini Province: Trend of Cases, 7 days Rolling Average, Weekly Cases and Deaths and Test Positivity Rate (Data reported on 02 October 2022)



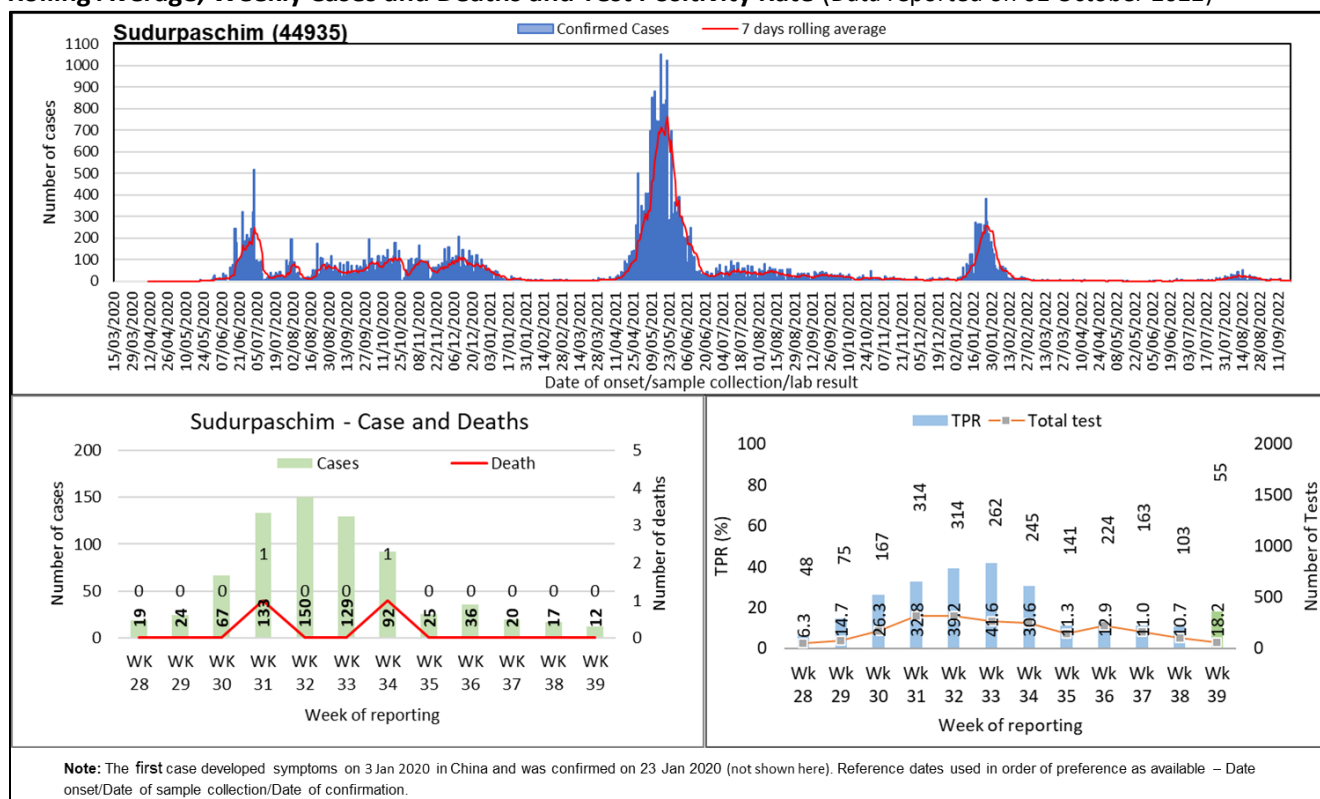
Lumbini reported 7 new cases in the past week. Cases have decreased by 70% in the past week compared to the previous week. There was no death reported in the past week, same as that in the previous week. The test positivity rate in Lumbini decreased to 4.0% in the past week. A total of 25 tests were performed in the past week, 77% less than that in the previous week.

Figure 3A6: RT- PCR confirmed COVID-19 cases in Karnali Province: Trend of Cases, 7 days Rolling Average, Weekly Cases and Deaths and Test Positivity Rate (Data reported on 02 October 2022)



In Karnali, no new case was reported in the past week same as in the previous week. There was no death reported in the past week, same as that in the previous week. The test positivity rate in Karnali remained stable at 0.0% in the past week with no test performed reported in the past week.

Figure 3A7: RT- PCR confirmed COVID-19 cases in Sudurpashchim Province: Trend of Cases, 7 days Rolling Average, Weekly Cases and Deaths and Test Positivity Rate (Data reported on 02 October 2022)



In Sudurpaschim, 12 new cases were reported in the past week. Cases have decreased by 29% in the past week compared to the previous week. There was no death reported in the past week, same as that in the previous week. The test positivity rate in Sudurpaschim increased to 18.2% in the past week. A total of 55 tests were performed reported in the past week, 47% less than that in the previous week.

Table 1: Summary of confirmed COVID-19 cases, deaths and transmission by provinces (Data reported on 02 October 2022 up to 19:00:00)

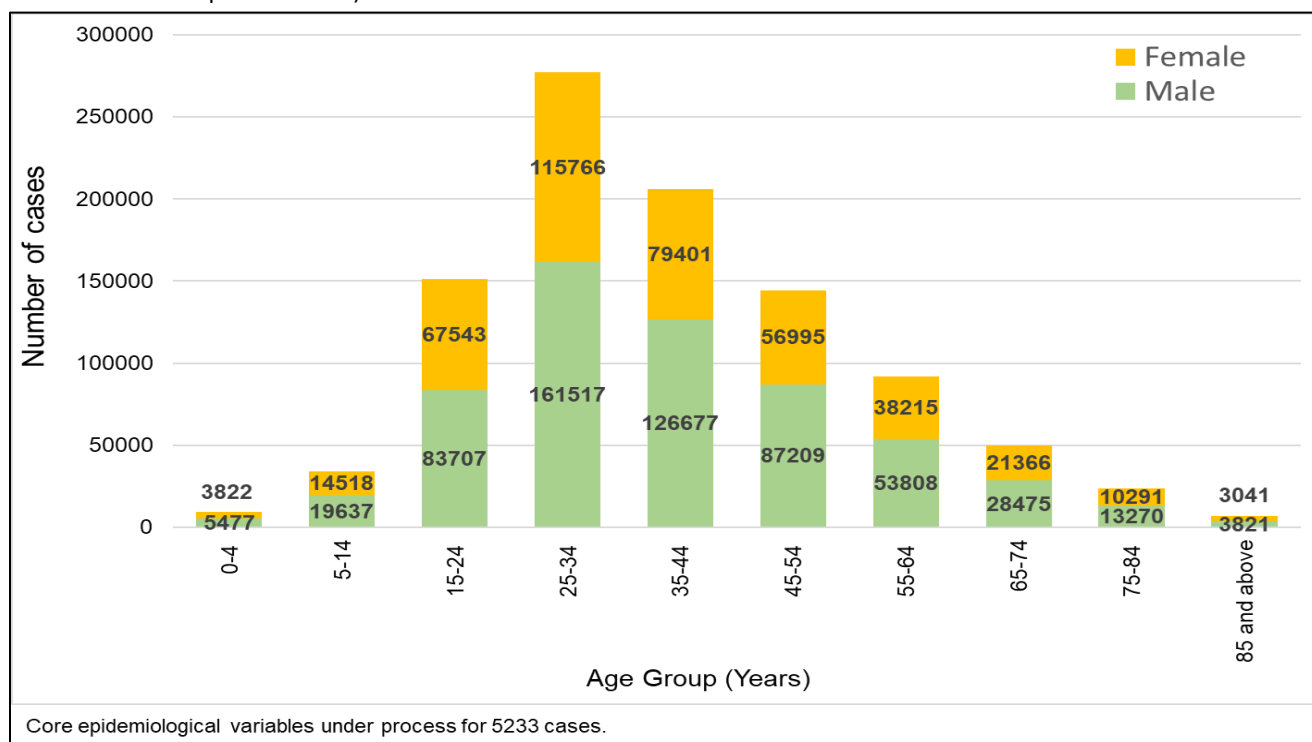
Reporting Province	Total confirmed cumulative cases RT-PCR Tests	Total Confirmed cumulative cases Antigen RDT test	Total confirmed cumulative cases	% of total confirmed cumulative cases	Total cumulative deaths	Transmission classification	Total confirmed cases in last 14 days Antigen RDT test	Total confirmed cases in last 14 days RT-PCR test	Total confirmed cases in last 14 days	% of total confirmed cumulative cases in last 14 days	Total Deaths in last 14 days
Province 1	129445	30322	159767	14.1	1722	Community transmission	2	53	55	7.9	0
Madhesh	53860	1178	55038	4.9	783	Community transmission	1	16	17	2.4	0
Bagmati	541827	32707	574534	50.9	5201	Community transmission	99	371	470	67.6	2
Gandaki	95264	24647	119911	10.6	1428	Community transmission	16	49	65	9.4	0
Lumbini	110442	28111	138553	12.3	1874	Community transmission	20	30	50	7.2	0
Karnali	24016	6325	30341	2.7	492	Community transmission	1	0	1	0.1	0
Sudurpashchim	44935	6139	51074	4.5	518	Community transmission	8	29	37	5.3	0
National Total	999789	129429*	1129218	100	12018	Community transmission	147	548	695	100	2

**Total reported in Health Emergency Operation Center (HEOC) Sitrep as of 02 October 2022, 152060 but IMU reported 129429*

Notes:

1. The source for case data used in this update is from RT-PCR test positivity reported by laboratories from various locations across Nepal, as shared by HEOC Sitrep; and IMU/IHIMS.
2. Case data is screened and cleaned by our data team for double entry, wrong entry and manual errors such as cities name in place of districts, district name in place of province etc.
3. Whereas the test positivity rate is calculated based on the test positivity reported in Sitrep for RT-PCR which may or may not be scrutinized or cleaned the same way and mark the cases on location of the laboratories rather than their place of residence.

Figure 4: Distribution of RT-PCR positive COVID-19 cases by age and sex (N= 994,556)(Data reported on 02 October 2022 up to 19:00:00)



Overall, the sex-distribution remains skewed towards males. The incidence of cases is higher in the economically productive age group (15-54 years) for both males and females.

Table 2: Age Specific Case Fatality Ratio and Co-morbidity of Deaths in RT-PCR confirmed COVID-19 cases (N= 999,789)(Data reported on 02 October 2022 up to 19:00:00)

Age Group (Years)	Total confirmed cases	Death (male)	Death (female)	Deaths with any known comorbid condition	Age specific case fatality ratio (%)
0-4	9299	16	23	13	0.42
5-14	34155	13	7	10	0.06
15-24	151250	92	96	70	0.12
25-34	277283	387	265	151	0.24
35-44	206078	875	452	281	0.64
45-54	144204	1396	645	574	1.42
55-64	92023	1690	803	782	2.71
65-74	49841	1640	893	957	5.08
75-84	23561	1228	658	772	8
85+	6862	524	289	279	11.85
Unknown	5233	19	7	11	0.5
National	999789	7880	4138	3900	1.20

$$\text{Case Fatality ratio (CFR, in\%)} = \frac{\text{Number of deaths from disease}}{\text{Number of confirmed cases of disease}} \times 100$$
 COVID-19 positive lab result is temporally associated with death; causal association under investigation

A total of 12,018 deaths have been reported. Out of the total deaths, 7,880 (65.6%) were male and 4,138 (34.4%) were female. Amongst the deaths, 3,900 persons (32.5%) had at least one known comorbidity. The age specific case fatality ratio (CFR) progressively increases with age, ranging from 0.06% to 11.9%.

PREPAREDNESS AND RESPONSE

What are the Government of Nepal (GoN) & the Ministry of Health & Population (MoHP) doing?

- Nepal reached the landmark of administering more than 50 million COVID-19 vaccine doses on 13 August 2022.

What is the WHO Country Office for Nepal doing?

Laboratory Diagnosis

- WHO Nepal has been providing technical support to the National Public Health Laboratory (NPHL) in following activities:
 - Uploading the result of genome sequencing of 48 SARS-CoV-2 samples in GISAID platform.

Technical Expertise and Training

- WHO Nepal provided technical and financial support in conducting the following programs:
 - 9th batch of 3-day Ambulance Driver Training. The program was organized by National Training Center, MoHP with support of WHO and EU ECHO fund with co-ordination with MoHP, Gandaki Province from 28-30 September 2022. There were 17-participants from hub and satellite hospitals located within Gandaki Province. The training contents included transportation of acutely ill or injured, ambulance disinfection; case management; communication with Dispatch Center – 102; orientation on Traffic Rules, 'Ambulance Nepal' App and National Ambulance Guideline 2021.



Group photo with all stakeholders during the 'Ambulance Driver Training'. Photo Credit- WHO Nepal

Operational Support and Logistics

- Continued routine work from the team of Operation Support and Logistics².

Risk Communication and Community Engagement

- Episode 38 of *Paanch Maa Bigyaan* was released via SoundCloud (link [here](#)). The focus of the episode was hepatitis outbreak in children and its links with COVID-19. The news was shared via Facebook (link [here](#)) and Twitter (English (link [here](#)); Nepali (link [here](#))).
- Continued support provided to NHEICC for radio campaign on dengue which began on 21 September.
- IEC materials on the following topics were shared via WHO, Country Office for Nepal, social media:
 - Dengue and COVID-19,
 - Harmful use of alcohol and COVID-19,
 - The importance of following COVID-19 preventive measures.
- The following documents were uploaded on *ReliefWeb* (link [here](#)):
 - *Weekly COVID-19 EPI Dashboard*,
 - *Focused COVID-19 and Health Media Monitoring*, and
 - *Weekly WHO Nepal COVID-19 Situation Update*.

WHO and MoHP press briefings on COVID-19 are being shared via Facebook and Twitter.

What are the health clusters partners doing?

- Continued routine work from the team of Partner Coordination and Donor Relation³
- UNICEF and WHO are providing overall support for COVID-19 vaccination campaign in close coordination with health partners and donors.
- All members of the Health Cluster are supporting the COVID-19 vaccination campaign of Nepal.
- Health partners are continuing their technical, operational, and logistics support for COVID-19 responses to health-related offices and institutions throughout the country.
- COVID-19 consultation is being provided continuously by specialist teams through tele-medicine services.
- Coordinated and supported Ministry of Health and Population and Respond Global Team for conducting Simulation Exercise from 21-23 September 2022. Officials from MoHP, DoHS, Hub and satellite hospitals, Armed Police force and ambulance network participated in the program. Prior to

² The routine works of the operation support and logistics team included technical support to the Management Division of the Department of Health Services for the forecasting, quantification, procurement, and distribution plan of COVID-19 commodities. The other routine activities included daily operational support to the WHO country office and seven provincial health emergency operation centers, including fleet and travel management and the procurement of required logistics and supplies.

³ The routine works include coordinating with all the divisions, units, centers of Ministry of Health and Population (MoHP) and Department of Health Services (DoHS), and the health partners for effective conduction of Health Cluster Coordination meeting. Furthermore, the works included the documentation and distribution of meeting minutes, health partner's support updates in the 3Ws (Who, What, Where) and thematic mapping, updates of WHO's support in the UNRCO 3W sheet, participate in multi-sectoral and emergency and disaster preparedness and response platforms and activities and the humanitarian country team operational meetings. Moreover, necessary support for effective coordination of Health Emergency Operation Centre (HEOC) with different stakeholders is provided.

the simulation exercise, a preparatory meeting was held on 19 September 2022 and an orientation program to the facilitators was held on 20 September 2022.

WHO's STRATEGIC OBJECTIVES FOR COVID-19 RESPONSE- [link here](#)

RECOMMENDATION AND ADVICE FOR THE PUBLIC

- [Protect yourself](#)
- [Questions and answers](#)
- [Travel advice](#)
- [EPI-WIN](#): tailored information for individuals, organizations and communities

USEFUL LINKS

- MoHP COVID-19 official portal is available [here](#).
- Nepal COVID-19 regular updates and resources are available [here](#)
- For COVID-19 updates from the WHO South-East Asia Region Office, please visit [here](#).
- For information about coronavirus disease (COVID-19) Pandemic from WHO, please visit [here](#)
- Please visit this [site](#) for all technical guidance from WHO.
- Online courses on COVID-19 from WHO can be found [here](#)
- WHO Coronavirus (COVID-19) Dashboard can be found [here](#)
- Visit the WHO Nepal [Facebook page](#) and webpage on COVID-19 [here](#)

CONTACT DETAILS

WHO Representative

Dr. Rajesh Sambhajirao Pandav
WHO Representative to the
Government of Nepal
Email: pandavr@who.int

WHO Incident Manager/ Health Cluster Co-lead

Dr. Allison Gocotano
Team Leader - WHO Health
Emergencies Program (WHE)
WHO Country Office for Nepal
Email: gocotanoa@who.int

Communication/Media Focal Point

Ms. Tsering Dolkar Gurung
Media, Communication and Public
Information Officer
WHO Country Office for Nepal
Email: gurungt@who.int