

Situation Update #132 - Coronavirus Disease 2019 (COVID-19)

WHO Country Office for Nepal

Reporting Date: 17 - 23 October 2022 (EPI Week 42)

HIGHLIGHTS

(Data published in the MoHP Situation Report as of 23 October 2022 and same data published in EDCD Report as of 24 October 2022)

- Of the total RT-PCR confirmed COVID-19 cases, 98.7% (987,741) of cases have recovered, 0.1% (696) are active cases and 1.2% (12,018) are deaths.
- Among the new RT-PCR confirmed cases (304) reported this week, 46.1% (140) are from Chitwan district followed by Kathmandu district 23.0% (70). Majority of the new cases 25.7% (78) have been reported from Kathmandu Valley (Kathmandu, Lalitpur and Bhaktapur), Bagmati Province.

COVID-19 vaccination coverage status (as of 23 October 2022)

Covi-AstraZeneca		Vero Cell		Janssen		Pfizer		Moderna	
First dose	5,560,795	First dose	10,378,783	Single dose	3,525,330	First dose	4,601,796	First dose	3,224,240
Second dose	4,813,379	Second dose	9,250,444			Second dose	2,977,327	Second dose	2,823,081

SITUATION OVERVIEW

(Data as of 23 October 2022)

NEPAL

Cumulative confirmed cases

RT-PCR: 1,000,455

Antigen RDT: 152,135

Cumulative deaths: 12,018

Cumulative tests

RT-PCR: 5,953,671

Antigen RDT: 1,437,630

SOUTH-EAST ASIA REGION

Cumulative cases (%)

60,410,703 (10%)

Cumulative deaths (%)

798,460 (12%)

GLOBAL

Cumulative cases (%)

624,748,971 (100%)

Cumulative deaths (%)

6,560,620 (100%)

NEPAL EPIDEMIOLOGICAL SITUATION

- Since 9 May 2021, all 7 provinces in the country are experiencing community transmission.
- Since the start of the COVID-19 pandemic, 78.2% (782,282/1000,455) of RT-PCR confirmed cases were reported from three provinces, namely- Province 1, Bagmati Province and Lumbini Province. The Kathmandu valley area (Kathmandu, Bhaktapur, Lalitpur) in Bagmati Province has substantially high case load with 44.1% of national total (441,347/1000,455), and 81.4% of the provincial total (441,347/542,347).
- Province-wise RT-PCR test positivity rate in Epi Week 42 ranged from 0.0% (Sudurpashchim province) to 15.7% (Province 1), with a national positivity rate at 5.5%. Karnali province did not report any RT-PCR test performed in the last week.
- Nepal reported a 15% increase in the number of new RT-PCR confirmed cases (n=304) in Epi week 42 compared to that in the previous week. Of these total cases reported last week, 83% of the cases have been reported from Province 1, Bagmati, and Lumbini province.
- Nepal did not report any death in Epi week 42, same as that in the previous week.

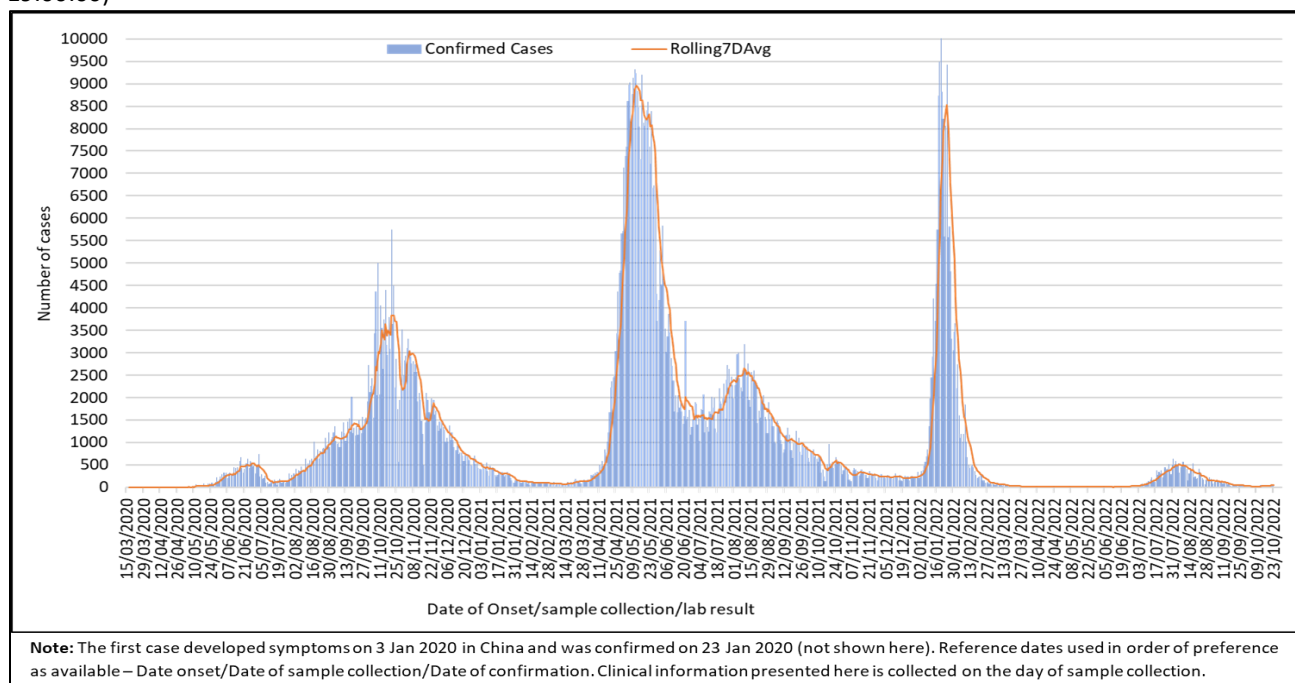
National Influenza Surveillance

- National Influenza Center (NIC)-NPHL reported 3 diagnostic Influenza samples on Epi-week 42 (17-23 Oct 2022). One sample tested positive for Influenza A(H1N1pdm09). None of the samples tested positive for SARS-CoV-2.
- Provincial Public Health Laboratory (PPHLs) from Province 1, Madhesh, Lumbini and Karnali Provinces reported testing of 60 samples for Influenza-SARS-CoV-2 using Multiplex kit on Epi-week 42 (17-23 Oct 2022).
 - Two samples tested positive for Influenza A.
 - All the samples tested negative for SARS-CoV-2.
 - A total of 1394 samples have been tested by PPHLs till 23 October 2022.
- From 3 January 2022 until 23 October 2022:
 - A total of 605 samples have been tested positive for Influenza (2 Influenza B, 284 Influenza A/H3, 311 Influenza A(H1N1pdm09), and 8 Influenza A (subtyping to be done) from 6,365 samples (Sentinel and non-sentinel samples including SARS-CoV-2 Negative SARI and ILI cases).
 - Similarly, 347 samples have tested positive for SARS-CoV-2 from 2,405 Influenza negative samples (sentinel/non-sentinel ILI/SARI samples).¹

WHO SEAR countries: Number of COVID-19 confirmed cases and cumulative incidence rate (per 100,000). Link Here- <https://worldhealthorg.shinyapps.io/covid/>

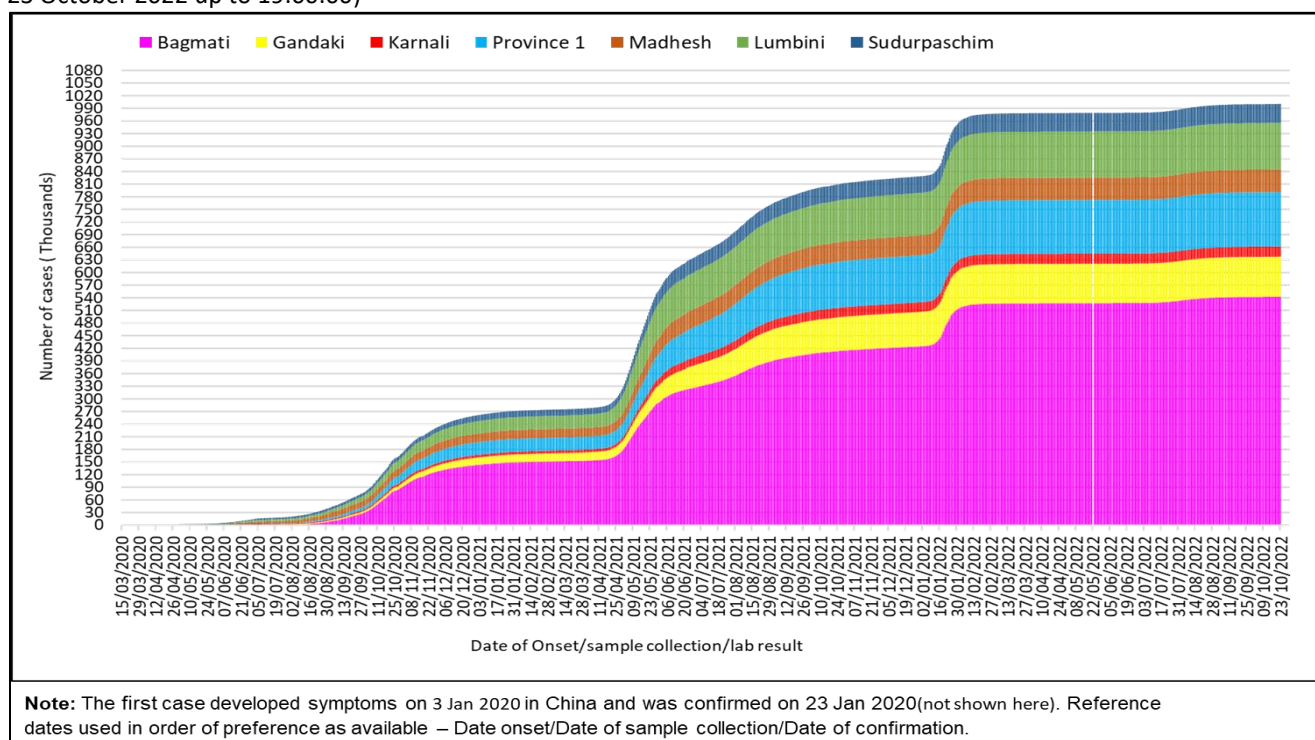
¹ These positive cases are included in the COVID-19 database

Figure 1: RT-PCR confirmed COVID-19 cases and average number of COVID-19 cases over the last seven days, by date of onset/sample/confirmation (N= 1,000,455)(Data reported on 23 October 2022 up to 19:00:00)



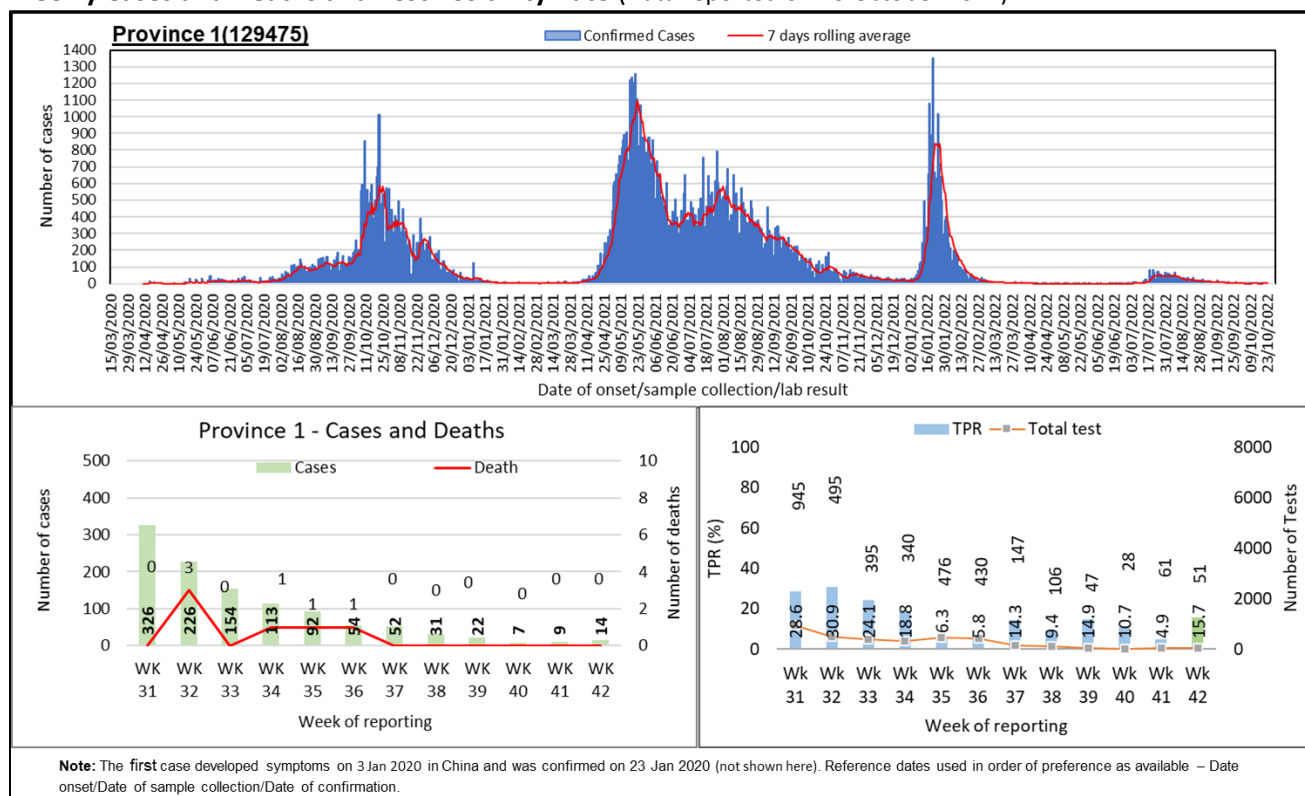
At national level, the first wave of cases between July 2020 and February 2021 was followed by the second wave from the middle of March 2021. Since the middle of December 2021, a third wave of cases soared exceeding the highest number of single day cases reported in the past surges towards the end of January 2022. Since the middle of May 2022, cases have been steadily rising in an increasing trend, however the trend is overall in a continuously decline now.

Figure 2: Cumulative case count of RT-PCR confirmed COVID-19 cases (N= 1,000,455)(Data reported on 23 October 2022 up to 19:00:00)



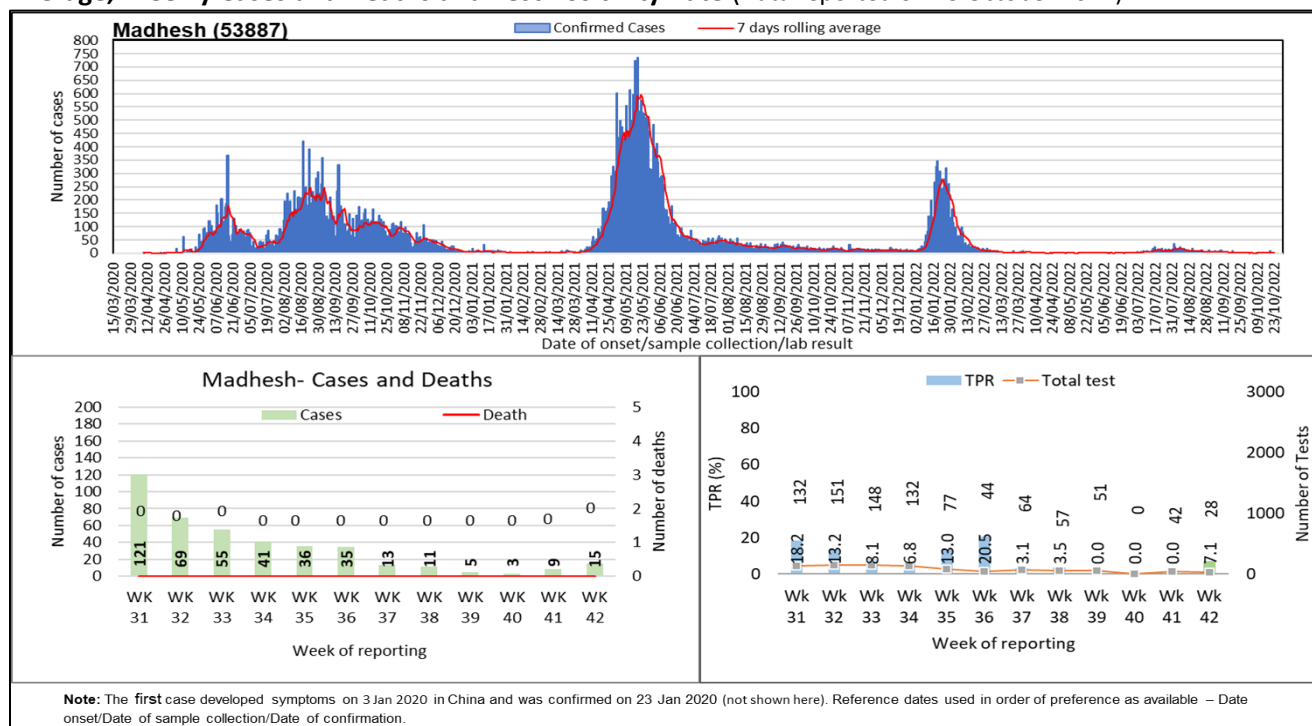
The cumulative case incidence has been increasing in Nepal since the first case confirmed on 23 January 2020. Cases have been largely reported from Bagmati Province followed by Province 1 and Lumbini Province.

Figure 3A1: RT- PCR confirmed COVID-19 cases in Province 1: Trend of Cases, 7 days Rolling Average, Weekly Cases and Deaths and Test Positivity Rate (Data reported on 23 October 2022)



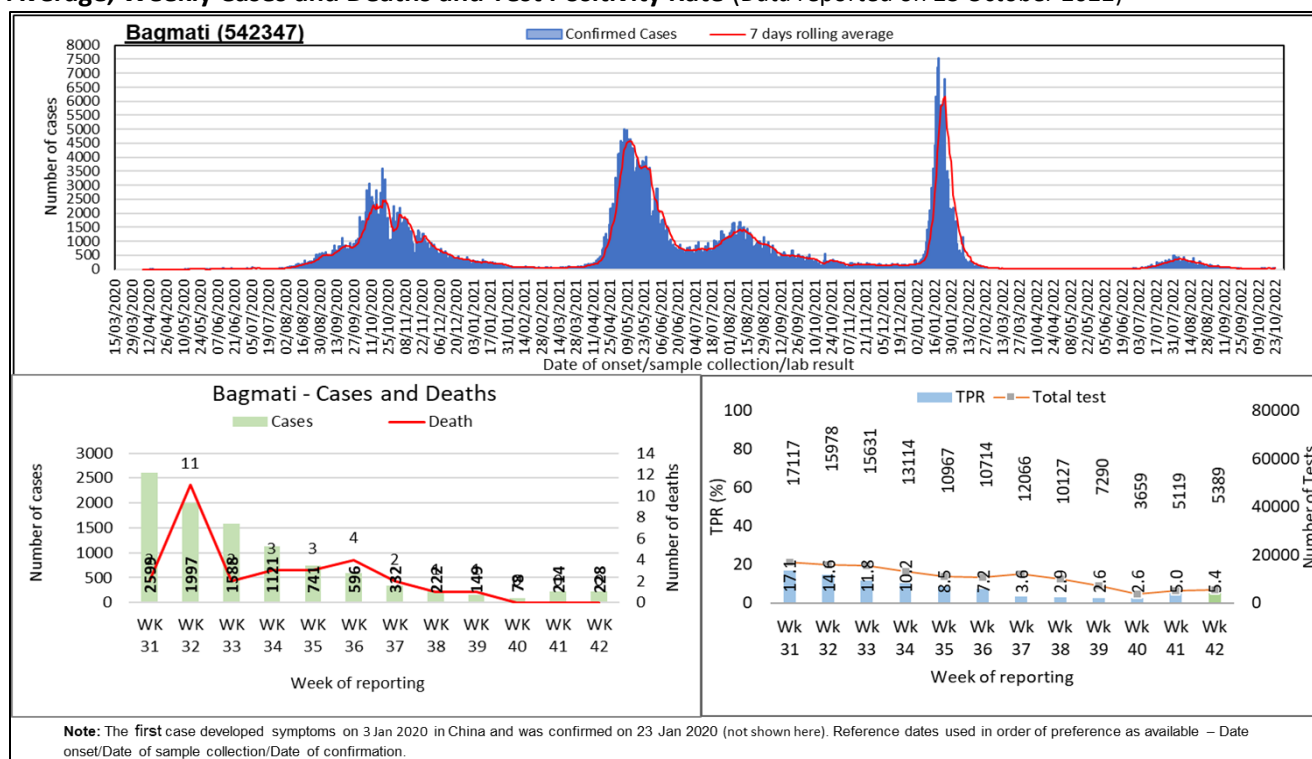
There were 14 new cases reported in the past week in Province 1. Cases have increased by 56% in the past week compared to the previous week. There was no death reported in the past week, same as that in the previous week. The test positivity rate in Province 1 increased to 15.7% in the past week. A total of 51 tests were performed in the past week, 16% less than that in the previous week.

Figure 3A2: RT- PCR confirmed COVID-19 cases in Madhesh Province: Trend of Cases, 7 days Rolling Average, Weekly Cases and Deaths and Test Positivity Rate (Data reported on 23 October 2022)



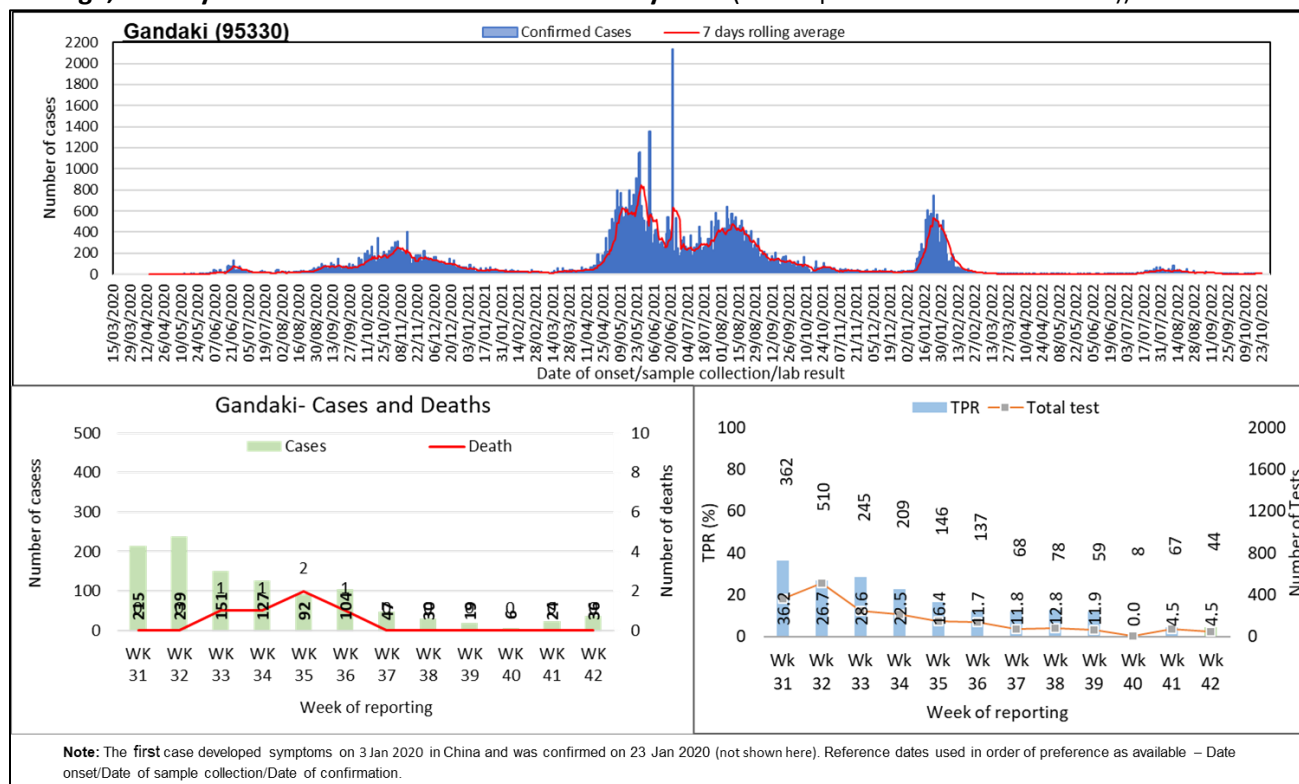
There were 15 new cases reported in the past week in Madhesh province. Cases have increased by 67% in the past week compared to previous week. There was no death reported in the past week, same as that in the previous week. The test positivity rate in Madhesh province increased to 7.1% in the past week. A total of 28 tests were performed in the past week, 33% less than that in the previous week.

Figure 3A3: RT- PCR confirmed COVID-19 cases in Bagmati Province: Trend of Cases, 7 days Rolling Average, Weekly Cases and Deaths and Test Positivity Rate (Data reported on 23 October 2022)



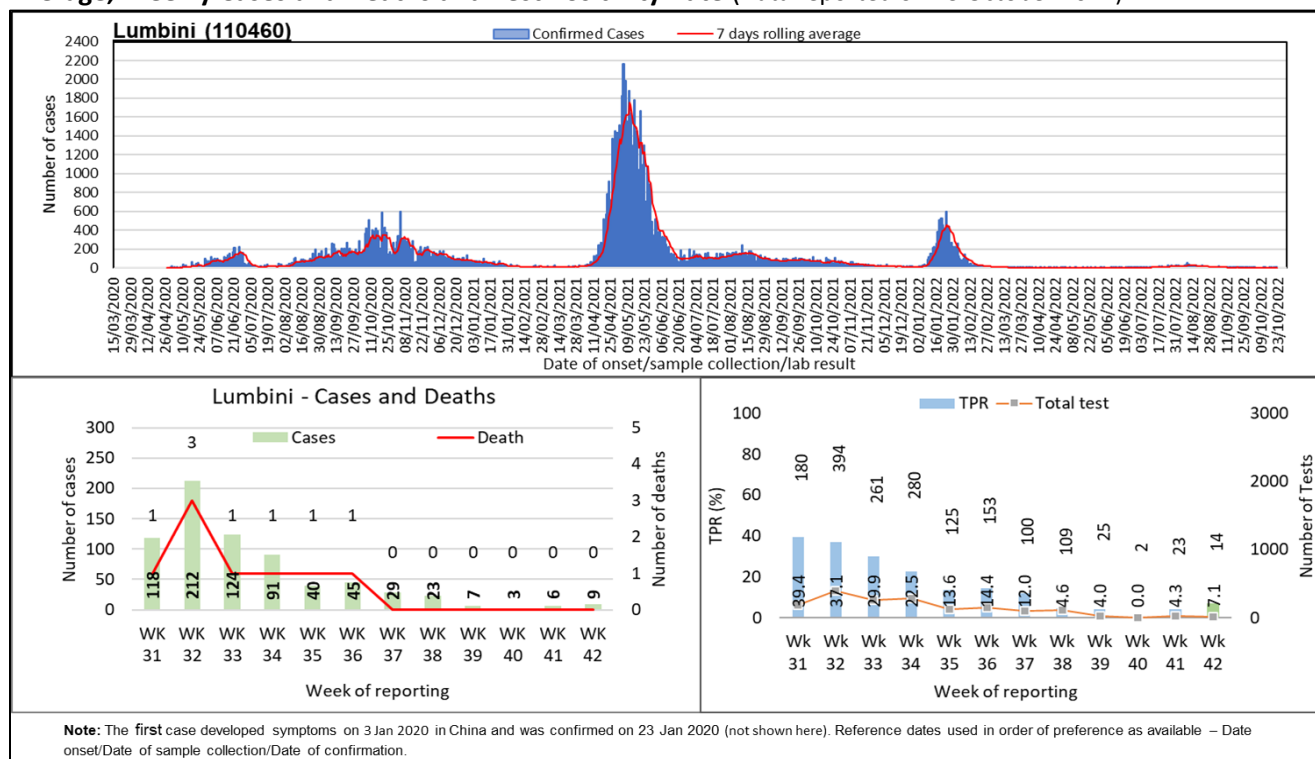
In Bagmati, 228 new cases were reported in the past week. Cases have increased by 7% in the past week compared to previous week. There was no death reported in the past week, same as that in the previous week. The test positivity rate in Bagmati increased to 5.4% in the past week. A total of 5389 tests were performed in the past week, 5% more than that in the previous week.

Figure 3A4: RT- PCR confirmed COVID-19 cases in Gandaki Province: Trend of Cases, 7 days Rolling Average, Weekly Cases and Deaths and Test Positivity Rate (Data reported on 23 October 2022))



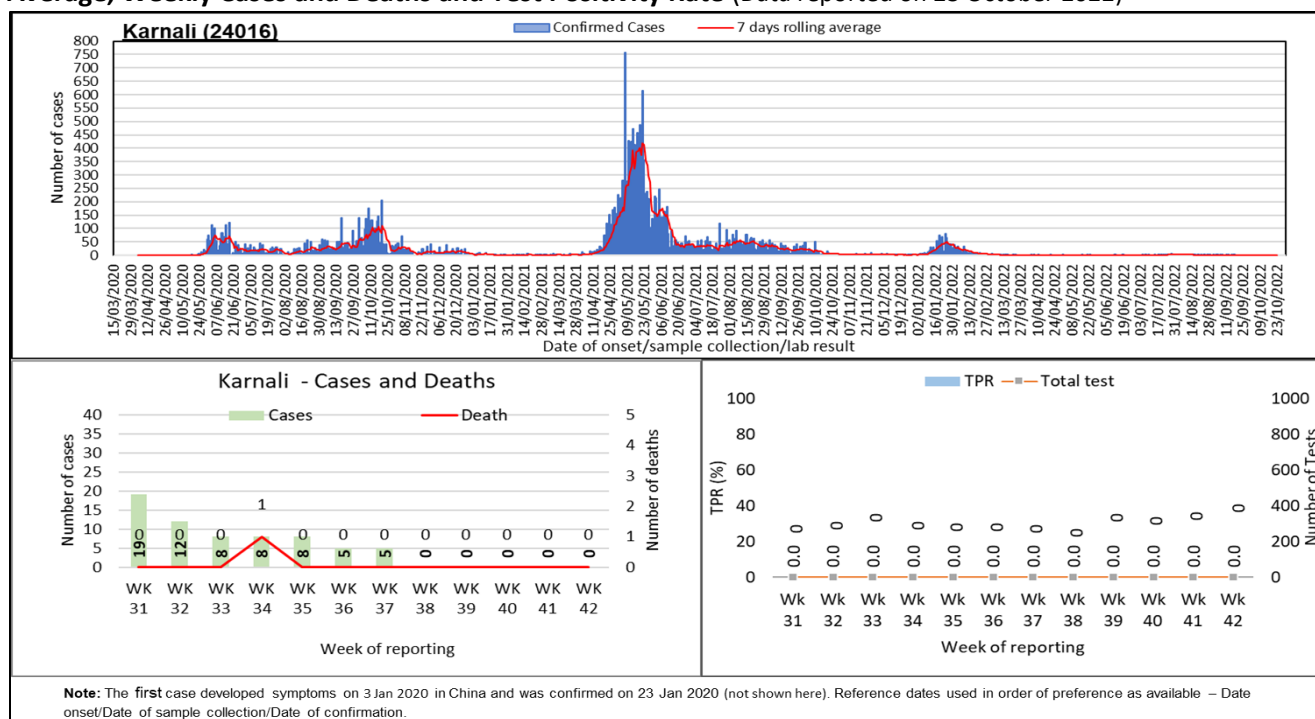
In Gandaki, 36 new cases were reported in the past week. Cases have increased by 50% in the past week compared to previous week. There was no death reported in the past week, same as that in the previous week. The test positivity rate in Gandaki sustained at 4.5% in the past week. A total of 44 tests were performed in the past week, 34% less than that in the previous week.

Figure 3A5: RT- PCR confirmed COVID-19 cases in Lumbini Province: Trend of Cases, 7 days Rolling Average, Weekly Cases and Deaths and Test Positivity Rate (Data reported on 23 October 2022)



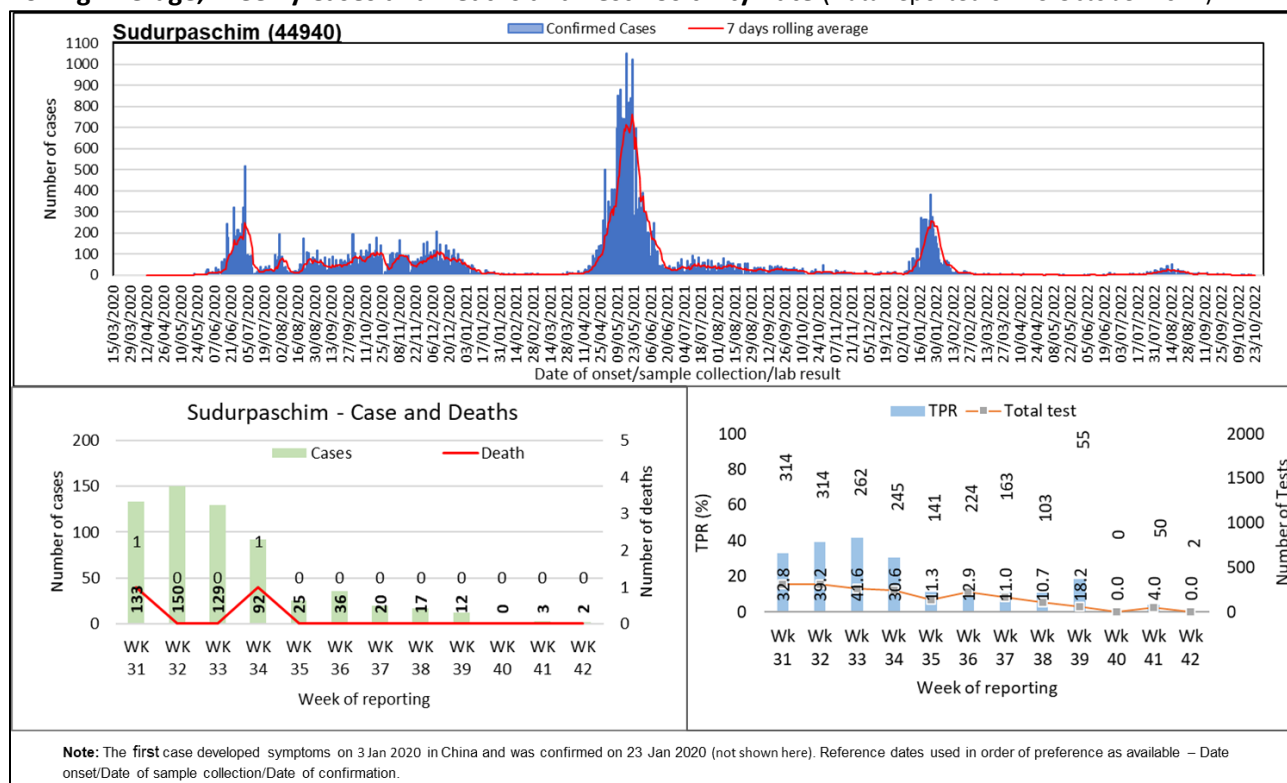
Lumbini reported 9 new cases in the past week. Cases have increased by 50% in the past week compared to previous week. There was no death reported in the past week, same as that in the previous week. The test positivity rate in Lumbini increased to 7.1% in the past week. A total of 14 tests were performed in the past week, 39% less than that in the previous week.

Figure 3A6: RT- PCR confirmed COVID-19 cases in Karnali Province: Trend of Cases, 7 days Rolling Average, Weekly Cases and Deaths and Test Positivity Rate (Data reported on 23 October 2022)



In Karnali, no new case was reported in the past week same as in the previous week. There was no death reported in the past week, same as that in the previous week. There was no test performed reported in the past week.

Figure 3A7: RT- PCR confirmed COVID-19 cases in Sudurpashchim Province: Trend of Cases, 7 days Rolling Average, Weekly Cases and Deaths and Test Positivity Rate (Data reported on 23 October 2022)



In Sudurpaschim, 2 new cases were reported in the past week. Cases have decreased by 33% in the past week compared to previous week. There was no death reported in the past week, same as that in the previous week. The test positivity rate in Sudurpaschim province decreased to 0.0% in the past week. A total of 2 tests were performed in the past week, 96% less than that in the previous week.

Table 1: Summary of confirmed COVID-19 cases, deaths and transmission by provinces (Data reported on 23 October 2022 up to 19:00:00)

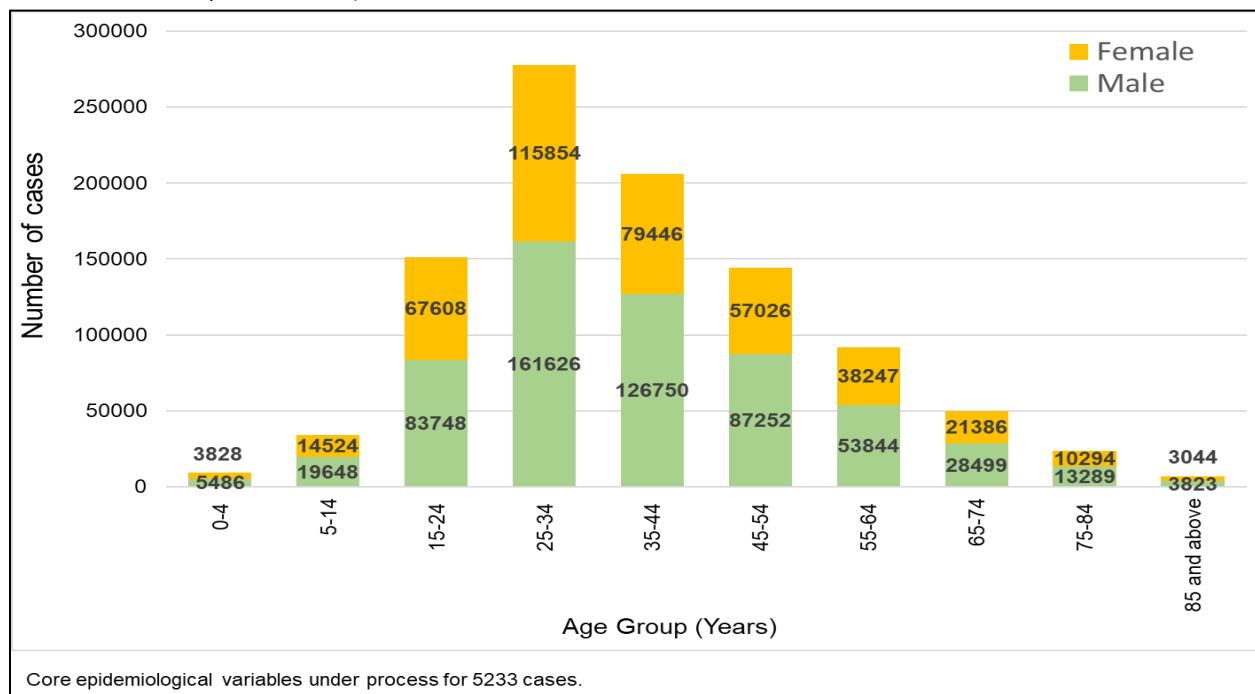
Reporting Province	Total confirmed cumulative cases RT-PCR Tests	Total Confirmed cumulative cases Antigen RDT test	Total confirmed cumulative cases	% of total confirmed cumulative cases	Total cumulative deaths	Transmission classification	Total confirmed cases in last 14 days Antigen RDT test	Total confirmed cases in last 14 days RT-PCR test	Total confirmed cases in last 14 days	% of total confirmed cumulative cases in last 14 days	Total Deaths in last 14 days
Province 1	129475	30322	159797	14.1	1722	Community transmission	0	23	23	3.8	0
Madhesh	53887	1178	55065	4.9	783	Community transmission	0	24	24	4.0	0
Bagmati	542347	32733	575080	50.9	5201	Community transmission	22	442	464	76.6	0
Gandaki	95330	24661	119991	10.6	1428	Community transmission	9	60	69	11.4	0
Lumbini	110460	28120	138580	12.3	1874	Community transmission	5	15	20	3.3	0
Karnali	24016	6325	30341	2.7	492	Community transmission	0	0	0	0.0	0
Sudurpashchim	44940	6140	51080	4.5	518	Community transmission	1	5	6	1.0	0
National Total	1000455	129479*	1129934	100	12018	Community transmission	37	569	606	100	0

Total reported in Health Emergency Operation Center (HEOC) Sitrep as of 23 October 2022, **152135 but IMU reported **129479***

Notes:

1. The source for case data used in this update is from RT- PCR test positivity reported by laboratories from various locations across Nepal, as shared by HEOC Sitrep; and IMU/IHIMS.
2. Case data is screened and cleaned by our data team for double entry, wrong entry and manual errors such as cities name in place of districts, district name in place of province etc.
3. Whereas the test positivity rate is calculated based on the test positivity reported in Sitrep for RT-PCR which may or may not be scrutinized or cleaned the same way and mark the cases on location of the laboratories rather than their place of residence.

Figure 4: Distribution of RT-PCR positive COVID-19 cases by age and sex (N= 995,222)(Data reported on 23 October 2022 up to 19:00:00)



Overall, the sex-distribution remains skewed towards males. The incidence of cases is higher in the economically productive age group (15-54 years) for both males and females.

Table 2: Age Specific Case Fatality Ratio and Co-morbidity of Deaths in RT-PCR confirmed COVID-19 cases (N= 1,000,455)(Data reported on 23 October 2022 up to 19:00:00)

Age Group (Years)	Total confirmed cases	Death (male)	Death (female)	Deaths with any known comorbid condition	Age specific case fatality ratio (%)
0-4	9314	16	23	13	0.42
5-14	34172	13	7	10	0.06
15-24	151356	92	96	70	0.12
25-34	277480	387	265	151	0.23
35-44	206196	875	452	281	0.64
45-54	144278	1396	645	574	1.41
55-64	92091	1690	803	782	2.71
65-74	49885	1640	893	957	5.08
75-84	23583	1228	658	772	8
85+	6867	524	289	279	11.84
Unknown	5233	19	7	11	0.5
National	1000455	7880	4138	3900	1.20

$$\text{Case Fatality ratio (CFR, in\%)} = \frac{\text{Number of deaths from disease}}{\text{Number of confirmed cases of disease}} \times 100$$

COVID-19 positive lab result is temporally associated with death; causal association under investigation.

A total of 12,018 deaths have been reported. Out of the total deaths, 7,880 (65.6%) were male and 4,138 (34.4%) were female. Amongst the deaths, 3,900 persons (32.5%) had at least one known comorbidity. The age specific case fatality ratio (CFR) progressively increases with age, ranging from 0.06% to 11.8%.

PREPAREDNESS AND RESPONSE

What are the Government of Nepal (GoN) & the Ministry of Health & Population (MoHP) doing?

- Nepal reached the landmark of administering more than 50 million COVID-19 vaccine doses on 13 August 2022.

What is the WHO Country Office for Nepal doing?

Laboratory Diagnosis

- WHO Nepal has been providing technical support to the National Public Health Laboratory (NPHL) in following activities:
 - Monitoring the quality standard of designated COVID-19 laboratories in the country through the National Quality Assurance Program (NQAP). A total of 5 designated COVID-19 laboratories participated in the NQAP this week. The result of all participating laboratories was 100% concordant.
 - Uploading the result of genome sequencing of 48 SARS-CoV-2 positive samples in GISAID (Global Initiative on Sharing Avian Influenza Data) platform.
- WHO Nepal facilitated NPHL in participating in the workshop 'Zoonotic Influenza Distribution Assessment Ranking' (ZIDAR) organized by EDCCD on 17 October 2022.

Technical Expertise and Training

- Continued routine work from the team of Technical Expertise and Training²

Operational Support and Logistics

- Continued routine work from the team of Operation Support and Logistics³.

Risk Communication and Community Engagement

- The radio campaign on dengue ended on 21 October 2022.
- The case study about "Yes we can" campaign which was included in the WHO report (*Community assets and civil society outreach in critical times: An initiative to engage civil society organizations in the COVID-19 response* (link [here](#))), was shared via Facebook (link [here](#)), Twitter (link [here](#)), and

² The routine works of the technical expertise and training team included technical support to the Ministry of Health and Population and its department for developing different guidelines/manuals, conducting health programs, and conducting capacity building activities. To perform these activities, the team coordinates and discuss with relevant government authorities and partners for effective planning and conducting the various activities.

³ The routine works of the operation support and logistics team included technical support to the Management Division of the Department of Health Services for the forecasting, quantification, procurement, and distribution plan of COVID-19 commodities. The other routine activities included daily operational support to the WHO country office and seven provincial health emergency operation centers, including fleet and travel management and the procurement of required logistics and supplies.

website of WHO, Country Office for Nepal (link [here](#)). The campaign, launched by the MoHP, WHO, and National Federation of the Disabled Nepal (NFDN) provided life-saving COVID-19 guidance and information to persons with disabilities in all 77 districts.

- IEC materials on the following topics were shared via WHO, Country Office for Nepal, social media:
 - Statement on the 13th meeting of the International Health Regulations (2005) Emergency Committee on COVID-19,
 - Handwashing and COVID-19,
 - Mental health and COVID-19,
 - Physical activity and COVID-19,
 - Harmful use of alcohol and COVID-19,
 - The importance of following COVID-19 preventive measures.
- The following documents were uploaded on *ReliefWeb* (link [here](#)):
 - *Weekly COVID-19 EPI Dashboard*,
 - *Focused COVID-19 and Health Media Monitoring*, and
 - *Weekly WHO Nepal COVID-19 Situation Update*.
- WHO and MoHP press briefings on COVID-19 are being shared via Facebook and Twitter.
- Continued support to the MoHP for weekly national briefing on public health issues. The briefing on 19 October 2022 was conducted by the Health Education Officer at MoHP and included COVID-19 updates and dengue updates. Along with, messages on International Lead Poisoning Prevention Week and national campaign on Vitamin and deworming was included in the program. The national briefing is broadcasted Live on every Wednesday at 4:15 PM via Nepal Television.
- Support provided to finalize content for International Lead Poisoning Prevention Week and World Polio Day.
- Continued daily media monitoring on COVID-19 and other health topics

What are the health clusters partners doing?

- Continued routine work from the team of Partner Coordination and Donor Relation⁴
- UNICEF and WHO are providing overall support for COVID-19 vaccination campaign in close coordination with health partners and donors.
- All members of the Health Cluster are supporting the COVID-19 vaccination campaign of Nepal.
- Health partners are continuing their technical, operational, and logistics support for COVID-19 responses to health-related offices and institutions throughout the country.
- COVID-19 consultation is being provided continuously by specialist teams through tele-medicine services.

⁴ The routine works include coordinating with all the divisions, units, centers of Ministry of Health and Population (MoHP) and Department of Health Services (DoHS), and the health partners for effective conduction of Health Cluster Coordination meeting. Furthermore, the works included the documentation and distribution of meeting minutes, health partner's support updates in the 3Ws (Who, What, Where) and thematic mapping, updates of WHO's support in the UNRCO 3W sheet, participate in multi-sectoral and emergency and disaster preparedness and response platforms and activities and the humanitarian country team operational meetings. Moreover, necessary support for effective coordination of Health Emergency Operation Centre (HEOC) with different stakeholders is provided.

WHO's STRATEGIC OBJECTIVES FOR COVID-19 RESPONSE- [link here](#) RECOMMENDATION AND ADVICE FOR THE PUBLIC

- [Protect yourself](#)
- [Questions and answers](#)
- [Travel advice](#)
- [EPI-WIN](#): tailored information for individuals, organizations and communities

USEFUL LINKS

- MoHP COVID-19 official portal is available [here](#).
- Nepal COVID-19 regular updates and resources are available [here](#)
- For COVID-19 updates from the WHO South-East Asia Region Office, please visit [here](#).
- For information about coronavirus disease (COVID-19) Pandemic from WHO, please visit [here](#)
- Please visit this [site](#) for all technical guidance from WHO.
- Online courses on COVID-19 from WHO can be found [here](#)
- WHO Coronavirus (COVID-19) Dashboard can be found [here](#)
- Visit the WHO Nepal [Facebook page](#) and webpage on COVID-19 [here](#)

CONTACT DETAILS

WHO Representative

Dr. Rajesh Sambhajirao Pandav
WHO Representative to the
Government of Nepal
Email: pandavr@who.int

WHO Incident Manager/ Health Cluster

Co-lead

Dr. Allison Gocotano
Team Leader - WHO Health
Emergencies Program (WHE)
WHO Country Office for Nepal
Email: gocotanoa@who.int

Communication/Media Focal Point

Ms. Tsering Dolkar Gurung
Media, Communication and Public
Information Officer
WHO Country Office for Nepal
Email: gurungt@who.int