

# Situation Update #139 - Coronavirus Disease 2019 (COVID-19)

## WHO Country Office for Nepal

Reporting Date: 5 – 11 December 2022  
(EPI Week 49)

### HIGHLIGHTS

(Data published in the MoHP Situation Report as of 11 December 2022 and same data published in EDCD Report as of 12 December 2022)

- Of the total RT-PCR confirmed COVID-19 cases, 98.8% (988,913) of cases have recovered, 0.003% (30) are active cases and 1.2% (12,019) are deaths.
- Among the new RT-PCR confirmed cases (23) reported this week, 56.5% (13) are from Kathmandu district followed by 13.0% (3) from Mahottari and 8.7% (2) from Bhaktapur districts. Majority of the new cases 65.2% (15) have been reported from Kathmandu Valley (Kathmandu, Lalitpur and Bhaktapur) and Bagmati Province.

### SITUATION OVERVIEW

(Data as of 11 December 2022)

#### NEPAL

##### Cumulative confirmed cases

RT-PCR: 1,000,932

Antigen RDT: 152,214

##### Cumulative deaths: 12,019

##### Cumulative tests

RT-PCR: 5,982,731

Antigen RDT: 1,466,165

#### SOUTH-EAST ASIA REGION

##### Cumulative cases (%)

60,703,589 (9%)

##### Cumulative deaths (%)

802,495 (12%)

#### GLOBAL

##### Cumulative cases (%)

645,100,674 (100%)

##### Cumulative deaths (%)

6,633,463 (100%)

### COVID-19 vaccination coverage status (as of 6 December 2022)

Vaccine	First dose	Second dose
Covi-AstraZeneca	5,561,356	4,817,218
Vero Cell	10,383,462	9,254,554
Janssen	3,531,689	
Pfizer	1,411,988	532,180
Pfizer pediatric	3,370,887	2,985,474
Moderna	3,225,533	2,828,110

### NEPAL EPIDEMIOLOGICAL SITUATION

- Since 9 May 2021, all 7 provinces in the country are experiencing community transmission.
- Since the start of the COVID-19 pandemic, a total of 78.2% (782,695/1,000,932) of RT-PCR confirmed cases were reported from three provinces, namely- Province 1, Bagmati Province and Lumbini Province. The Kathmandu valley area (Kathmandu, Bhaktapur, Lalitpur) in Bagmati Province has substantially high case load with 44.1% of the national total (441,619/1,000,932), and 81.4% of the provincial total (441,619/542,690).
- Province-wise RT-PCR test positivity rate in Epi Week 49 ranged from 0.0% (Province 1, Madhesh, Gandaki, Lumbini and Sudurpaschim Provinces) to 0.8% (Bagmati Province), with a national positivity rate at 0.8%. Karnali Province did not report any RT-PCR test performed in the last week.

- Nepal reported a 26% decrease in the number of new RT-PCR confirmed cases (n=23) in Epi week 49 compared to that in the previous week. Of these total cases reported last week, 78% of the cases have been reported from Province 1, Bagmati, and Lumbini Provinces.
- Nepal did not report any death in Epi week 49, same as in the previous week.

### ***National Influenza Surveillance***

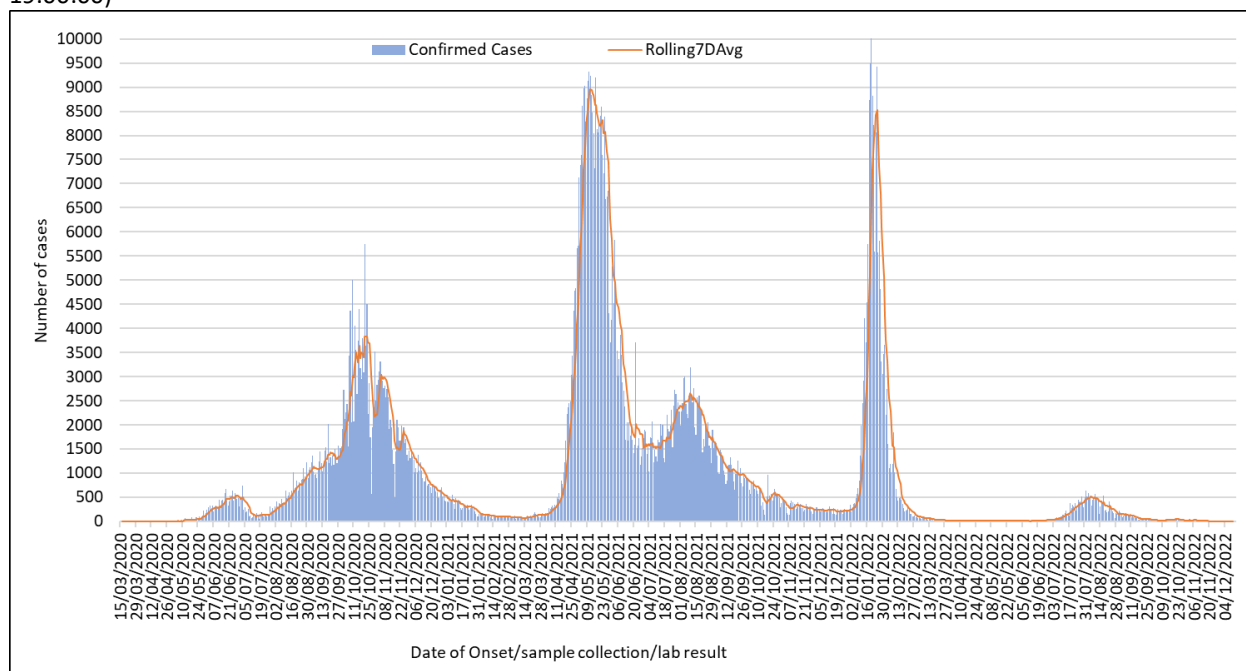
- National Influenza Center (NIC)-NPHL reported 14 Diagnostic Influenza samples on EPID-week 49 (5-11 Dec 2022). One sample tested positive for Influenza A(H1N1pdm09). None of the samples tested positive for SARS-CoV-2.
- WHO Nepal has been providing technical support to the National Public Health Laboratory (NPHL) in the following activities:
  - NIC-NPHL received 15 samples from its sentinel sites i.e. Sukraraj Tropical and Infectious Disease Hospital (15 samples) for Influenza-SARS-CoV-2 testing.
  - None of the samples tested positive for Influenza or SARS-CoV-2.
- Out of the total SARS-CoV-2 samples that tested negative at NPHL on Epi-week 49, 20 SARS-CoV-2 negative samples were tested for Influenza.
  - One sample tested Influenza A/H3 positive.
- Provincial Public Health Laboratory (PPHL) from Madhesh, Gandaki, Lumbini and Karnali Provinces reported testing of 53 samples for Influenza-SARS-CoV-2 using Multiplex kit on Epi-week 49.
  - None of the samples tested positive for Influenza A and B and SARS-CoV-2.
  - A total of 1844 samples have been tested by PPHLs till 11 December 2022.
- WARUN reported testing of 14 samples for Influenza on Epi-week 49.
  - One sample tested Influenza A/H3 positive.
- From 3 January 2022 until 11 December 2022:
  - A total of 689 samples tested positive for Influenza (5 Influenza B, 324 Influenza A/H3, 359 Influenza A(H1N1pdm09), and 1 Influenza A (subtyping to be done) from 7,576 samples (Sentinel and non-sentinel samples including SARS-CoV-2 negative SARI and ILI cases).
  - Similarly, 365 samples tested positive for SARS-CoV-2 from 3,186 Influenza negative samples (sentinel/non-sentinel ILI/SARI samples).<sup>1</sup>

**WHO SEAR countries: Number of COVID-19 confirmed cases and cumulative incidence rate (per 100,000). Link Here- <https://worldhealthorg.shinyapps.io/covid/>**

---

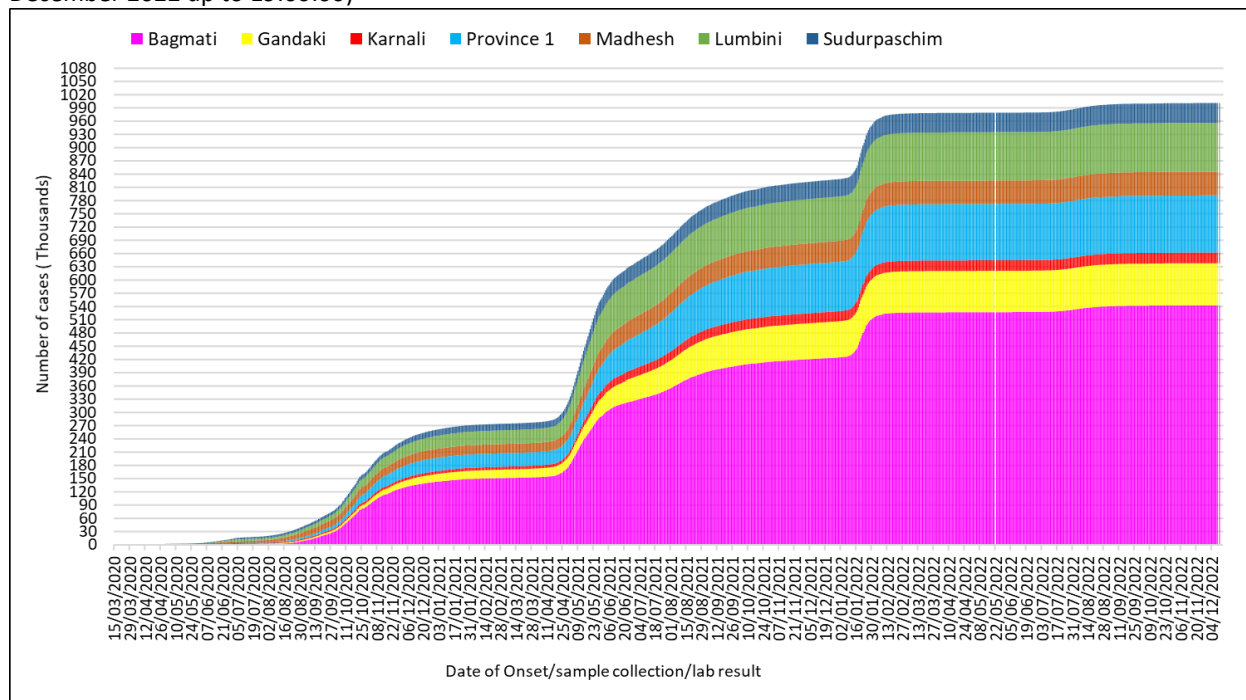
<sup>1</sup> These positive cases are included in the COVID-19 database

**Figure 1: RT-PCR confirmed COVID-19 cases and average number of COVID-19 cases over the last seven days, by date of onset/sample/confirmation (N= 1000932)(Data reported on 11 December 2022 up to 19:00:00)**



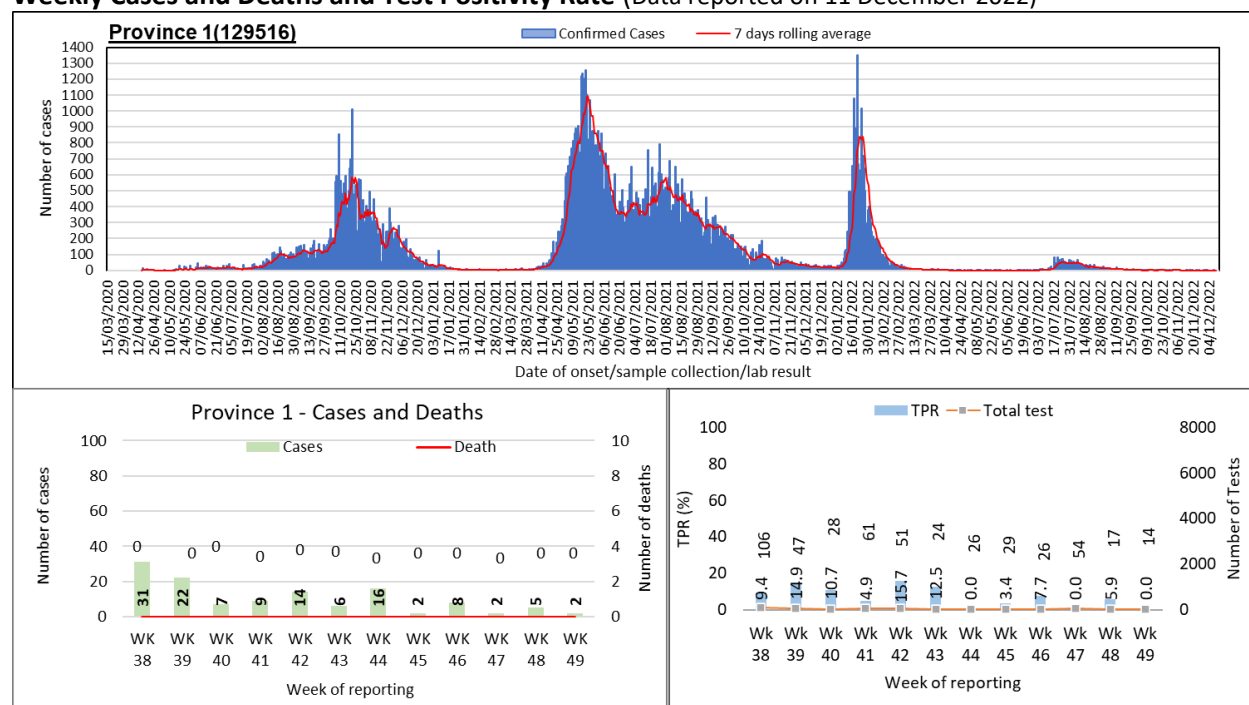
At national level, the first wave of cases between July 2020 and February 2021 was followed by the second wave from the middle of March 2021. Since the middle of December 2021, a third wave of cases soared up exceeding the highest number of single day cases reported in the past surges towards the end of January 2022. Another wave of cases steadily soared up towards the middle of May 2022 following an overall declining trend since the middle of August 2022.

**Figure 2: Cumulative case count of RT-PCR confirmed COVID-19 cases (N= 1000932)(Data reported on 11 December 2022 up to 19:00:00)**



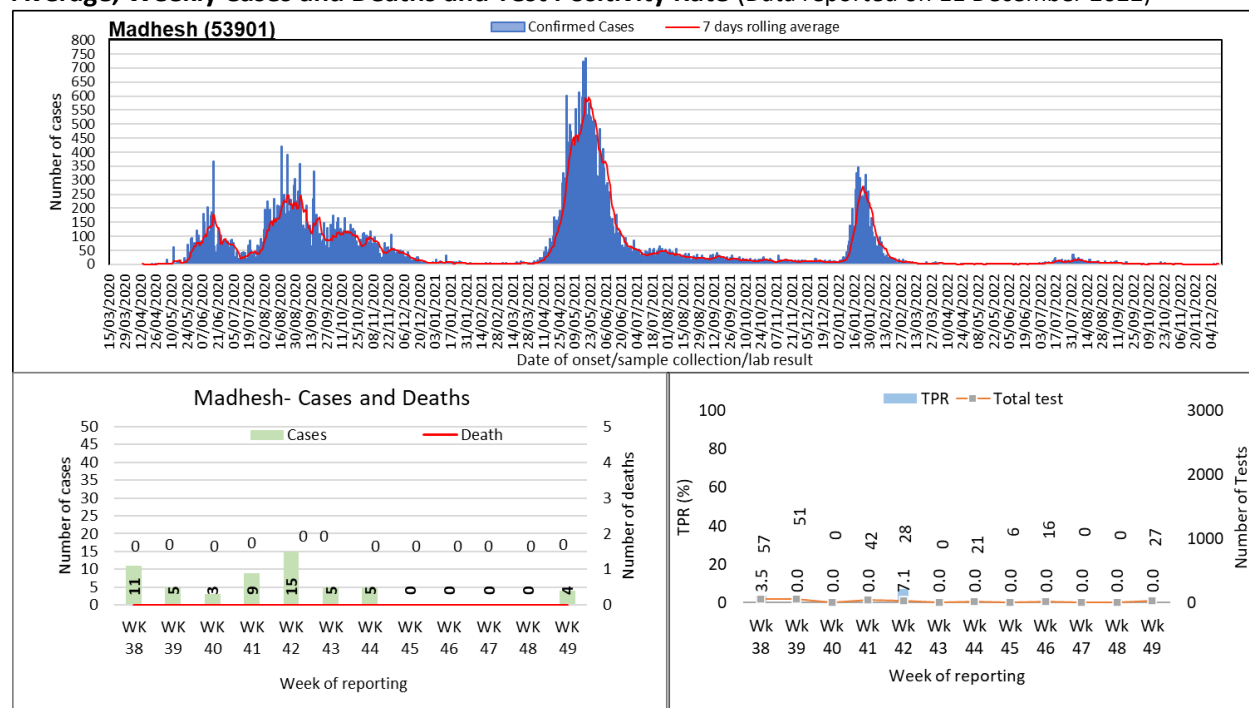
The cumulative case incidence has been increasing in Nepal since the first case confirmed on 23 January 2020. Cases have been largely reported from Bagmati Province followed by Province 1 and Lumbini Province.

**Figure 3A1: RT- PCR confirmed COVID-19 cases in Province 1: Trend of Cases, 7 days Rolling Average, Weekly Cases and Deaths and Test Positivity Rate (Data reported on 11 December 2022)**



There were 2 new cases reported in the past week in Province 1. Cases have decreased by 60% in the past week compared to the previous week. There was no death reported in the past week, same as in the previous week. The test positivity rate in Province 1 decreased to 0.0% in the past week. A total of 14 tests were performed in the past week, 18% less than that in the previous week.

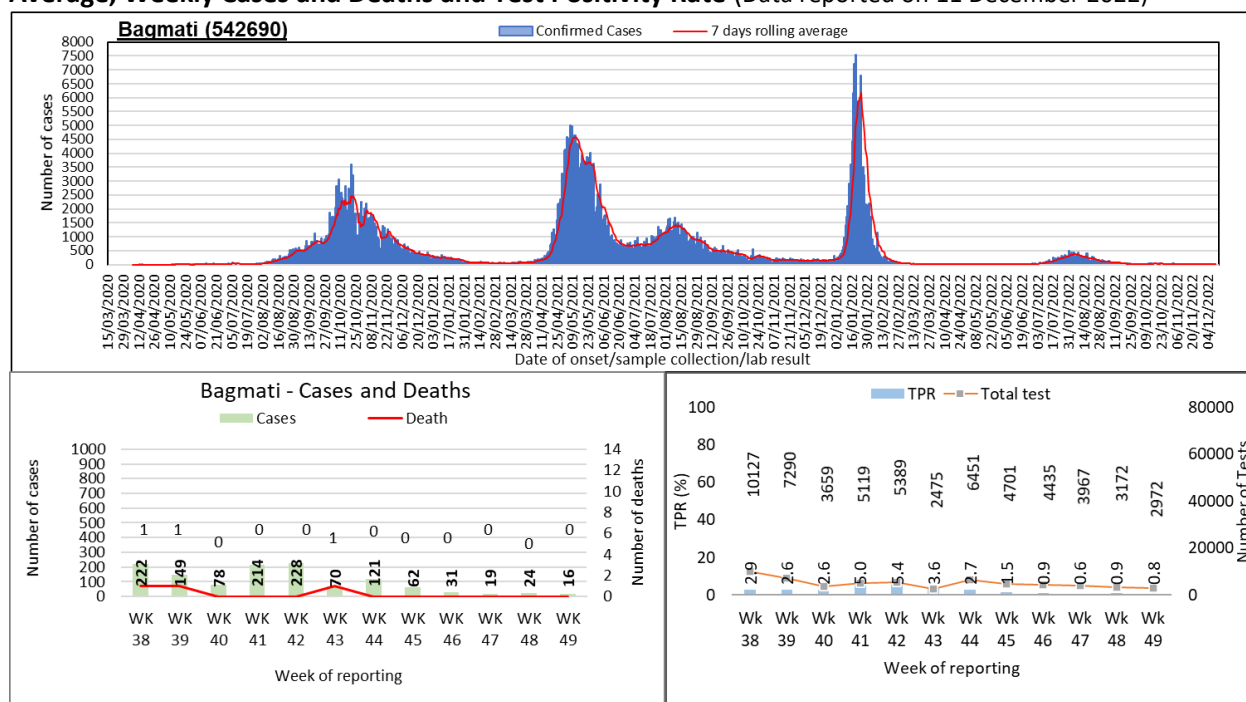
**Figure 3A2: RT- PCR confirmed COVID-19 cases in Madhesh Province: Trend of Cases, 7 days Rolling Average, Weekly Cases and Deaths and Test Positivity Rate (Data reported on 11 December 2022)**



There were 4 new cases reported in the past week in Madhesh province, an increase from no case in the previous week. There was no death reported in the past week, same as in the previous week. The test positivity rate in Madhesh

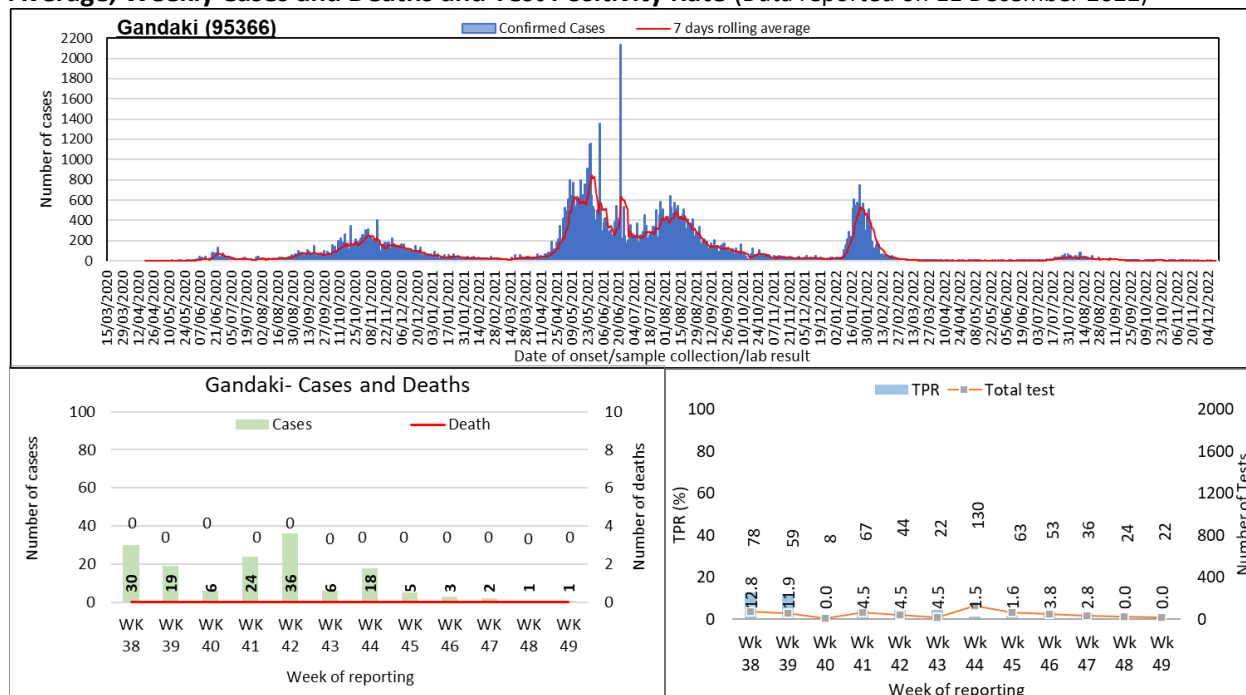
was 0.0% in the past week. A total of 27 tests were performed in the past week, compared to none reported in the previous week.

**Figure 3A3: RT- PCR confirmed COVID-19 cases in Bagmati Province: Trend of Cases, 7 days Rolling Average, Weekly Cases and Deaths and Test Positivity Rate (Data reported on 11 December 2022)**



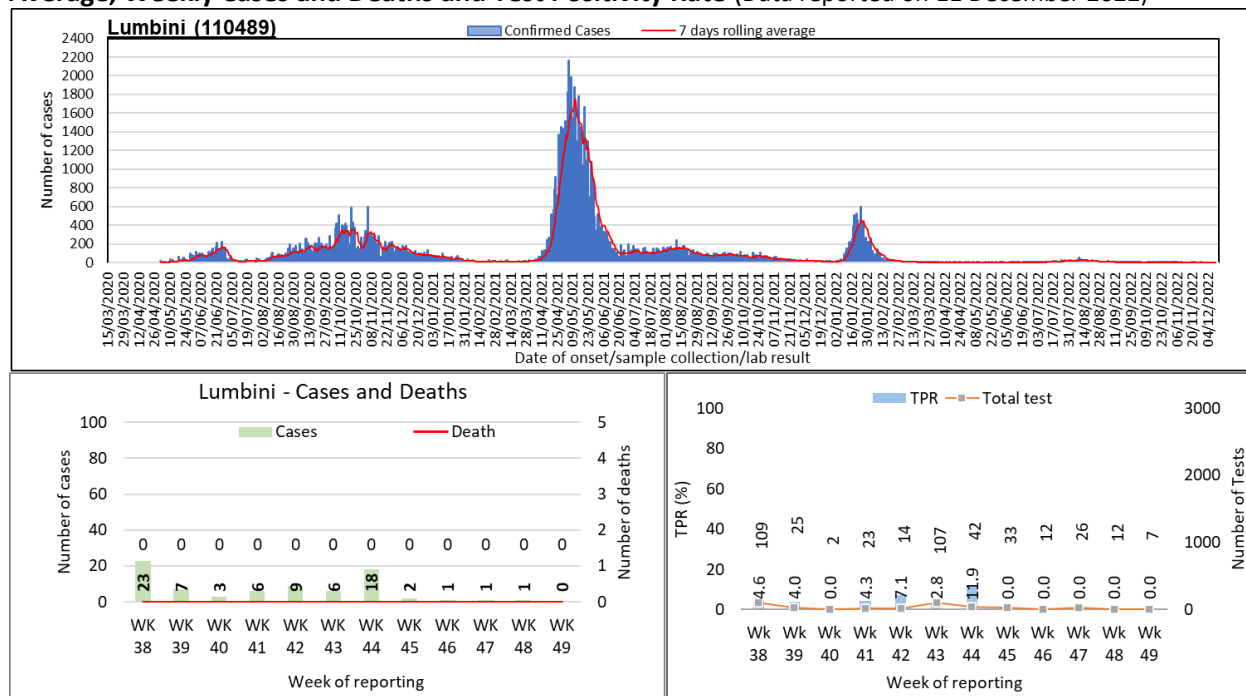
In Bagmati, 16 new cases were reported in the past week. Cases have decreased by 33% in the past week compared to previous week. There was no death reported in the past week, same as in the previous week. The test positivity rate in Bagmati decreased to 0.8% in the past week. A total of 2972 tests were performed in the past week, 6% less than that in the previous week.

**Figure 3A4: RT- PCR confirmed COVID-19 cases in Gandaki Province: Trend of Cases, 7 days Rolling Average, Weekly Cases and Deaths and Test Positivity Rate (Data reported on 11 December 2022)**



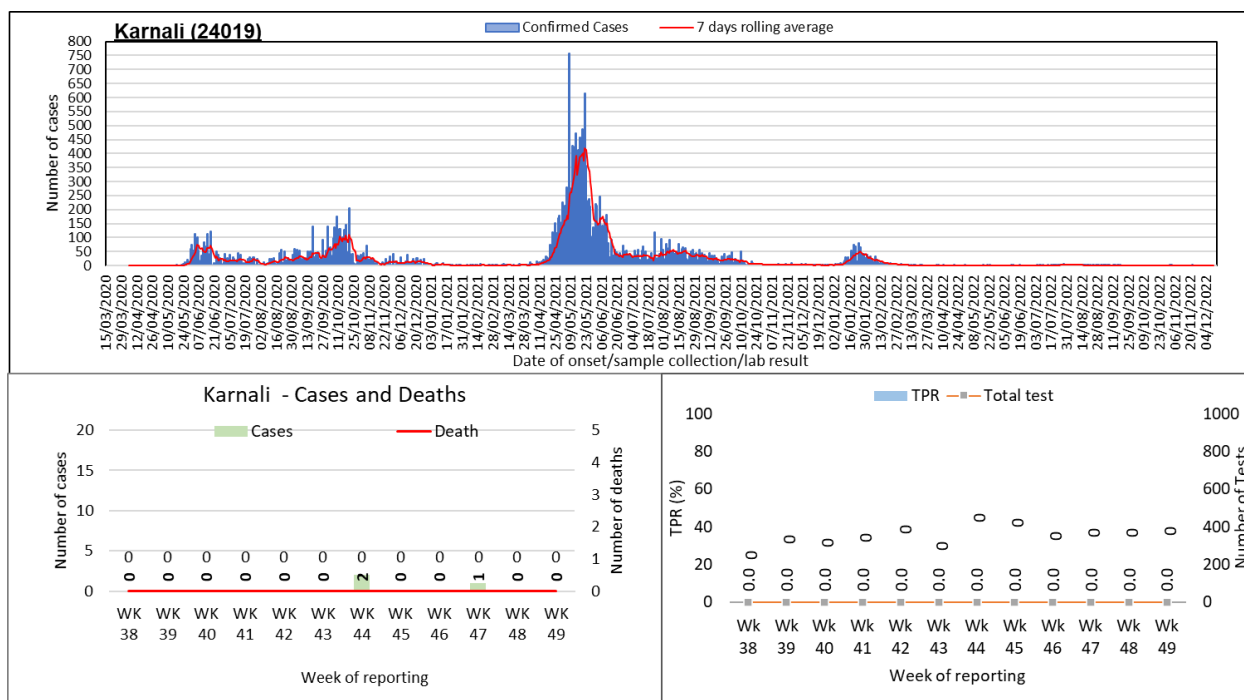
In Gandaki, 1 new case was reported in the past week, same as in the previous week. There was no death reported in the past week, same as in the previous week. The test positivity rate in Gandaki retained at 0.0% in the past week. A total of 22 tests were performed in the past week, 8% less than that in the previous week.

**Figure 3A5: RT- PCR confirmed COVID-19 cases in Lumbini Province: Trend of Cases, 7 days Rolling Average, Weekly Cases and Deaths and Test Positivity Rate (Data reported on 11 December 2022)**



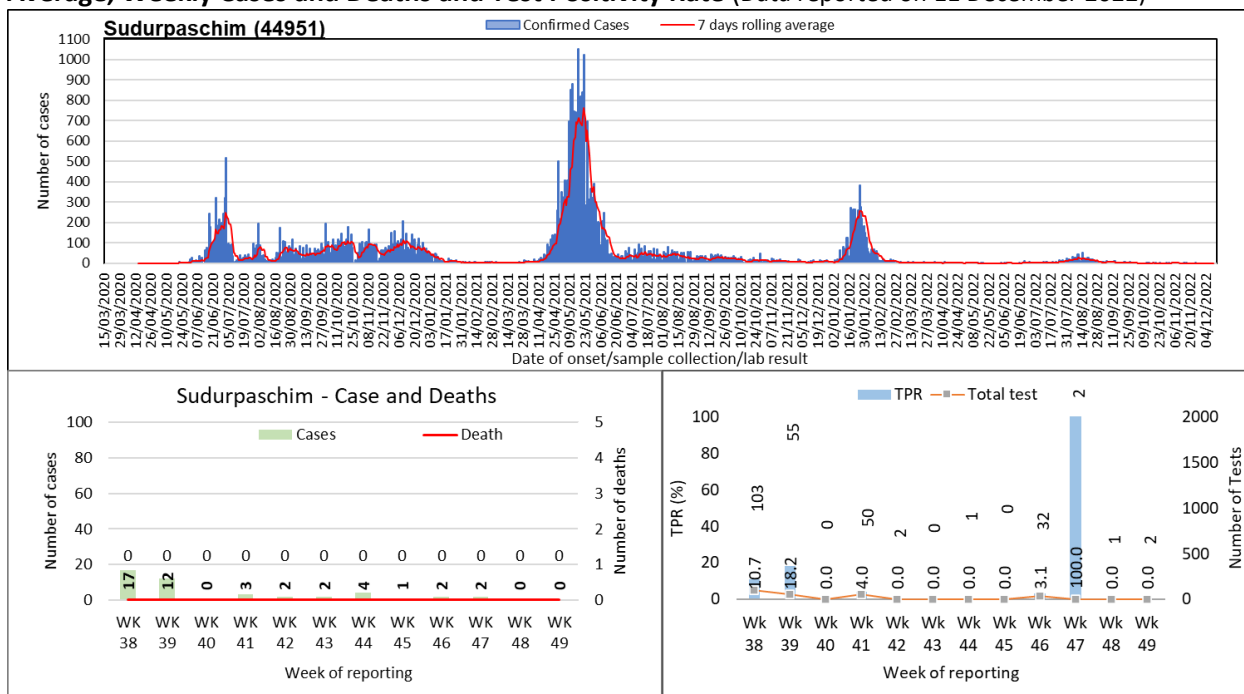
Lumbini reported no new case in the past week. Cases have decreased by 100% in the past week compared to previous week. There was no death reported in the past week, same as in the previous week. The test positivity rate in Lumbini retained at 0.0% in the past week. A total of 7 tests were performed in the past week, 42% less than that in the previous week.

**Figure 3A6: RT- PCR confirmed COVID-19 cases in Karnali Province: Trend of Cases, 7 days Rolling Average, Weekly Cases and Deaths and Test Positivity Rate (Data reported on 11 December 2022)**



In Karnali, no new case was reported in the past week, same as in the previous week. There was no death reported in the past week, same as in the previous week. There was no test performed reported in the past week.

**Figure 3A7: RT- PCR confirmed COVID-19 cases in Sudurpaschim Province: Trend of Cases, 7 days Rolling Average, Weekly Cases and Deaths and Test Positivity Rate (Data reported on 11 December 2022)**



In Sudurpaschim, no new case was reported in the past week, same as in the previous week. There was no death reported in the past week, same as in the previous week. The test positivity rate in Sudurpaschim retained at 0.0% in the past week. A total of 2 tests were performed in the past week, 100% less than that reported in the previous week.

**Table 1: Summary of confirmed COVID-19 cases, deaths and transmission by provinces** (Data reported on 11 December 2022 up to 19:00:00)

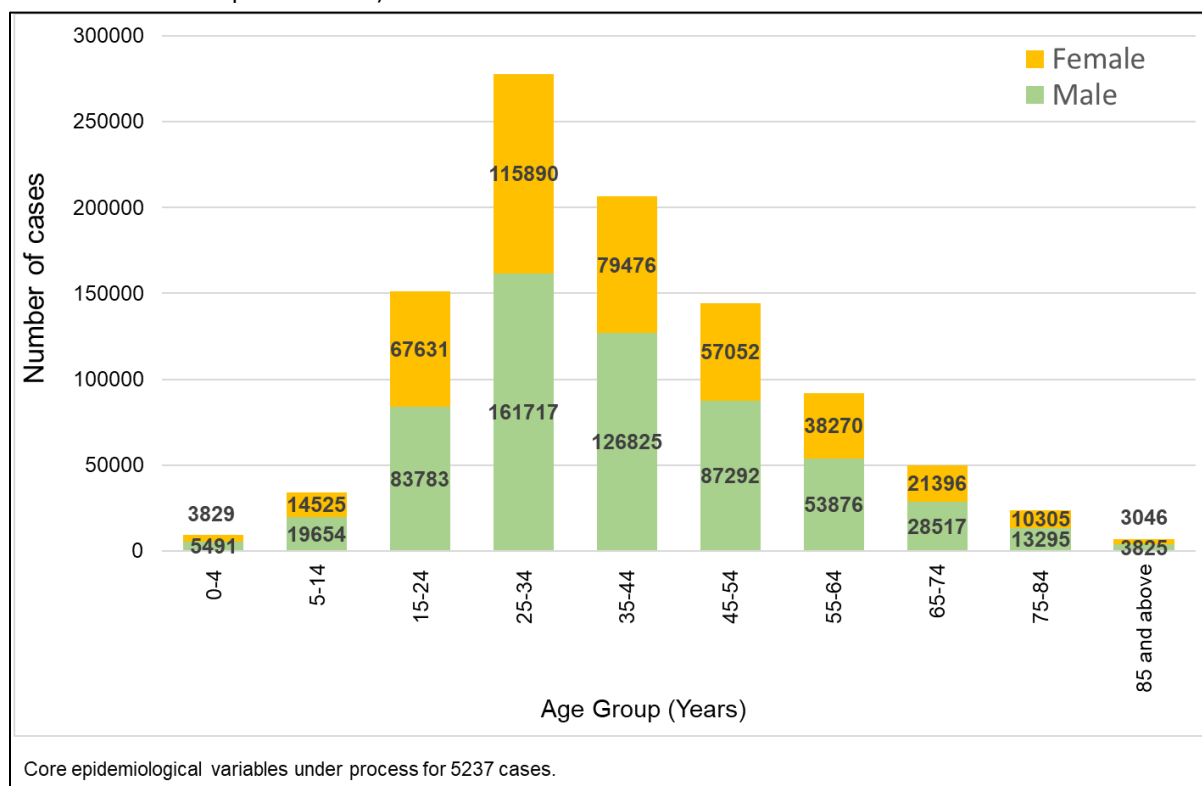
Reporting Province	Total confirmed cumulative cases RTPCR Tests	Total Confirmed cumulative cases Antigen RDT test	Total confirmed cumulative cases	% of total confirmed cumulative cases	Total cumulative deaths	Transmission classification	Total confirmed cases in last 14 days Antigen RDT test	Total confirmed cases in last 14 days RT-PCR test	Total confirmed cases in last 14 days	% of total confirmed cumulative cases in last 14 days	Total Deaths in last 14 days
Province 1	129516	30322	159838	14.1	1722	Community transmission	0	7	7	11.5	0
Madhesh	53901	1178	55079	4.9	783	Community transmission	0	4	4	6.6	0
Bagmati	542690	32764	575454	50.9	5202	Community transmission	5	40	45	73.8	0
Gandaki	95366	24668	120034	10.6	1428	Community transmission	1	2	3	4.9	0
Lumbini	110489	28139	138628	12.3	1874	Community transmission	1	1	2	3.3	0
Karnali	24019	6325	30344	2.7	492	Community transmission	0	0	0	0.0	0
Sudurpashchim	44951	6142	51093	4.5	518	Community transmission	0	0	0	0.0	0
<b>National Total</b>	<b>1000932</b>	<b>129538*</b>	<b>1130470</b>	<b>100</b>	<b>12019</b>	Community transmission	<b>7</b>	<b>54</b>	<b>61</b>	<b>100</b>	<b>0</b>

*\*Total reported in Health Emergency Operation Center (HEOC) Sitrep as of 11 December **152214**, IMU reported **129538***

Notes:

1. The source for case data used in this update is from RT- PCR test positivity reported by laboratories from various locations across Nepal, as shared by HEOC Sitrep; and IMU/IHIMS.
2. Case data is screened and cleaned by our data team for double entry, wrong entry and manual errors such as cities name in place of districts, district name in place of province etc.
3. Whereas the test positivity rate is calculated based on the test positivity reported in Sitrep for RT-PCR which may or may not be scrutinized or cleaned the same way and mark the cases on location of the laboratories rather than their place of residence.

**Figure 4: Distribution of RT-PCR positive COVID-19 cases by age and sex (N= 995695)**(Data reported on 11 December 2022 up to 19:00:00)



Overall, the sex-distribution remains skewed towards males. The incidence of cases is higher in the economically productive age group (15-54 years) for both males and females.

**Table 2: Age Specific Case Fatality Ratio and Co-morbidity of Deaths in RT-PCR confirmed COVID-19 cases (N= 1000932)**(Data reported on 11 December 2022 up to 19:00:00)

Age Group (Years)	Total confirmed cases	Death (male)	Death (female)	Deaths with any known comorbid condition	Age specific case fatality ratio (%)
0-4	9320	16	23	13	0.42
5-14	34179	13	7	10	0.06
15-24	151414	92	96	70	0.12
25-34	277607	387	265	151	0.23
35-44	206301	875	452	281	0.64
45-54	144344	1396	645	574	1.41
55-64	92146	1690	803	782	2.71
65-74	49913	1640	893	957	5.07
75-84	23600	1228	659	773	8
85+	6871	524	289	279	11.83
Unknown	5237	19	7	11	0.5
<b>National</b>	<b>1000932</b>	<b>7880</b>	<b>4139</b>	<b>3901</b>	<b>1.20</b>

$$\text{Case Fatality ratio (CFR, in\%)} = \frac{\text{Number of deaths from disease}}{\text{Number of confirmed cases of disease}} \times 100$$

COVID-19 positive lab result is temporally associated with death; causal association under investigation.

*A total of 12,019 deaths have been reported. Out of the total deaths, 7,880 (65.6%) were male and 4,139 (34.4%) were female. Amongst the deaths, 3,901 persons (32.5%) had at least one known comorbidity. The age specific case fatality ratio (CFR) progressively increases with age, ranging from 0.06% to 11.8%.*

## **PREPAREDNESS AND RESPONSE**

### **What are the Government of Nepal (GoN) & the Ministry of Health & Population (MoHP) doing?**

- From 3 November 2022, the Government of Nepal has started administering COVID-19 second dose of booster vaccination for people aged 55 and above and the vulnerable population (immune-deficiency/chronic patients, pregnant women, and health workers) group.

### **What is the WHO Country Office for Nepal doing?**

#### ***Laboratory Diagnosis***

- WHO Nepal has been providing technical support to the National Public Health Laboratory (NPHL) in the following activities:
  - Monitoring the quality standard of designated COVID-19 laboratories in the country through the National Quality Assurance Program (NQAP). A total of 4 designated COVID-19 laboratories participated in the NQAP this week. The result of all participating laboratories was 100% concordant.

#### ***Technical Expertise and Training***

- Continued routine work from the team of Technical Expertise and Training<sup>2</sup>
- WHO Nepal provided technical and financial support in conducting the following programs:
  - A three-day service provider's training on Infection Prevention and Control (IPC) organized by the National Health Training Centre (NHTC) conducted in Seti Provincial Hospital at Dhangadhi from 6 to 8 December 2022. A team of 5 trainers trained 20 participants which included nursing staff from 13 hospitals based in Sudurpaschim Province.
  - A three-day service provider's training on Infection Prevention and Control (IPC) organized by the National Health Training Centre (NHTC) conducted in Bheri Hospital at Nepalgunj from 6 to 8 December 2022. A team of 5 trainers trained 20 participants which included nursing staff from all district level hospital of Karnali and Lumbini Province.

---

<sup>2</sup> The routine works of the technical expertise and training team included technical support to the Ministry of Health and Population and its department for developing different guidelines/manuals, conducting health programs, and conducting capacity building activities. To perform these activities, the team coordinates and discuss with relevant government authorities and partners for effective planning and conducting the various activities.



**(Top) A participant demonstrating proper way to wear PPE during IPC training in Dhangadhi, Photo credit: WHO Nepal/M.Karmacharya; (Bottom:) Trainer delivering the session during IPC training in Nepalgunj, Photo credit: WHO Nepal/S.Paudel**

### **Operational Support and Logistics**

- Continued routine work from the team of Operation Support and Logistics<sup>3</sup>.

<sup>3</sup> The routine works of the operation support and logistics team included technical support to the Management Division of the Department of Health Services for the forecasting, quantification, procurement, and distribution plan of COVID-19 commodities. The other routine activities included daily operational support to the WHO country office and seven provincial health emergency operation centers, including fleet and travel management and the procurement of required logistics and supplies.

## **Risk Communication and Community Engagement**

- Episode 82 of *Science in 5 (Older adults and COVID-19 vaccines)* was translated, dubbed, and published via the following links:
  - I. Maithili: Facebook [link](#); OneDrive [link](#); YouTube [link](#)
- The new episode of *Paanch Maa Bigyaan*, on abortions, was shared via SoundCloud (link [here](#)), Facebook (link [here](#)), and Twitter (link [here](#)).
- On the occasion of *16 Days of Activism against Gender-Based Violence*, relevant IEC materials were shared which highlighted the support that can be provided by health systems, healthcare workers, and governments during emergencies to protect women and their children from violence.
- The following documents were uploaded on *ReliefWeb* (link [here](#)):
  - i. *Weekly COVID-19 EPI Dashboard*,
  - ii. *Focused COVID-19 and Health Media Monitoring*, and
  - iii. *Weekly WHO Nepal COVID-19 Situation Update*.
- WHO Nepal continues to support the Ministry of Health and Population (MoHP) for the weekly national briefing. The key information included in the briefing held on 7 December 2022 are: COVID-19 updates, significance of public health and social measures and COVID-19 booster vaccine, changed schedule for polio vaccination in routine immunization, message about 16 days of activism against gender-based violence, Female Community Health Volunteers Day and International Day of Person with Disability 2022. The briefing is broadcasted live every Wednesday at 4:15 PM via Nepal Television, which is also shared on MoHP and WHO Facebook pages.

## **What are the health clusters partners doing?**

- Continued routine work from the team of Partner Coordination and Donor Relation<sup>4</sup>
- UNICEF and WHO are providing overall support for COVID-19 vaccination campaign in close coordination with health partners and donors.
- All members of the Health Cluster are supporting the COVID-19 vaccination campaign of Nepal.
- Health partners are continuing their technical, operational, and logistics support for COVID-19 responses to health-related offices and institutions throughout the country.
- COVID-19 consultation is being provided continuously by specialist teams through tele-medicine services.

---

<sup>4</sup> The routine works include coordinating with all the divisions, units, centers of Ministry of Health and Population (MoHP) and Department of Health Services (DoHS), and the health partners for effective conduction of Health Cluster Coordination meeting. Furthermore, the works included the documentation and distribution of meeting minutes, health partner's support updates in the 3Ws (Who, What, Where) and thematic mapping, updates of WHO's support in the UNRCO 3W sheet, participate in multi-sectoral and emergency and disaster preparedness and response platforms and activities and the humanitarian country team operational meetings. Moreover, necessary support for effective coordination of Health Emergency Operation Centre (HEOC) with different stakeholders is provided.

## WHO's STRATEGIC OBJECTIVES FOR COVID-19 RESPONSE- [link here](#)

### RECOMMENDATION AND ADVICE FOR THE PUBLIC

- [Protect yourself](#)
- [Questions and answers](#)
- [Travel advice](#)
- [EPI-WIN](#): tailored information for individuals, organizations and communities

### USEFUL LINKS

- MoHP COVID-19 official portal is available [here](#).
- Nepal COVID-19 regular updates and resources are available [here](#)
- For COVID-19 updates from the WHO South-East Asia Region Office, please visit [here](#).
- For information about coronavirus disease (COVID-19) Pandemic from WHO, please visit [here](#)
- Please visit this [site](#) for all technical guidance from WHO.
- Online courses on COVID-19 from WHO can be found [here](#)
- WHO Coronavirus (COVID-19) Dashboard can be found [here](#)
- Visit the WHO Nepal [Facebook page](#) and webpage on COVID-19 [here](#)

### CONTACT DETAILS

#### **WHO Representative**

Dr. Rajesh Sambhajirao Pandav  
WHO Representative to the Government of Nepal  
Email: [pandavr@who.int](mailto:pandavr@who.int)

#### **WHO Incident Manager/ Health Cluster Co-lead**

Dr. Allison Gocotano  
Team Leader - WHO Health Emergencies Program (WHE)  
WHO Country Office for Nepal  
Email: [gocotanoa@who.int](mailto:gocotanoa@who.int)

#### **Communication/Media Focal Point**

Ms. Tsering Dolkar Gurung  
Media, Communication and Public Information Officer  
WHO Country Office for Nepal  
Email: [gurungt@who.int](mailto:gurungt@who.int)