

Situation Update #141 - Coronavirus Disease 2019 (COVID-19)

WHO Country Office for Nepal

Reporting Date: 19 – 25 December 2022
(EPI Week 51)

HIGHLIGHTS

(Data published in the MoHP Situation Report as of 25 December 2022 and same data published in EDCD Report as of 26 December 2022)

- Of the total RT-PCR confirmed COVID-19 cases, 98.8% (988,936) of cases have recovered, 0.003% (11) are active cases, and 1.2% (12,019) are deaths.
- Among the new RT-PCR confirmed cases (20) reported this week, 60.0% (12) are from Kathmandu district followed by 15.0% (3) from Syangja and 10.0% (2) from Bhaktapur districts. Majority of the new cases 75.0% (15) have been reported from Kathmandu Valley (Kathmandu, Lalitpur and Bhaktapur) and Bagmati Province.

SITUATION OVERVIEW

(Data as of 25 December 2022)

NEPAL

Cumulative confirmed cases

RT-PCR: 1,000,966

Antigen RDT: 152,216

Cumulative deaths: 12,019

Cumulative tests

RT-PCR: 5,987,488

Antigen RDT: 1,474,584

(Data as of 18 December 2022)

SOUTH-EAST ASIA REGION

Cumulative cases (%)

60,719,269 (9%)

Cumulative deaths (%)

802,804 (12%)

GLOBAL

Cumulative cases (%)

649,244,427 (100%)

Cumulative deaths (%)

6,646,562 (100%)

COVID-19 vaccination coverage status *(as of 20 December 2022)*

Vaccine	First dose	Second dose
Covi-AstraZeneca	5,561,521	4,818,638
Vero Cell	10,383,511	9,254,633
Janssen	3,532,971	
Pfizer	4,862,792	3,622,080
Moderna	3,225,928	2,828,699

NEPAL EPIDEMIOLOGICAL SITUATION

- Since 9 May 2021, all 7 provinces in the country are experiencing community transmission.
- Since the start of the COVID-19 pandemic, a total of 78.2% (782,723/1,000,966) of RT-PCR confirmed cases were reported from three provinces, namely - Province 1, Bagmati Province, and Lumbini Province. The Kathmandu valley area (Kathmandu, Bhaktapur, Lalitpur) in Bagmati Province has substantially high case load with 44.1% of the national total (441,642/1,000,966), and 81.4% of the provincial total (441,642/542,717).
- Province-wise, RT-PCR test positivity rate in Epi Week 51 ranged from 0.0% (Province 1, Madhesh, Gandaki, and Lumbini Provinces) to 0.8% (Bagmati Province), with a national positivity rate at 0.8%. Karnali and Sudurpaschim provinces did not report any RT-PCR test performed in the last week.

- Nepal reported a 43% increase in the number of new RT-PCR confirmed cases (n=20) in Epi week 51 compared to that in the previous week. Of these total cases reported last week, 85% of the cases have been reported from Province 1, Bagmati, and Lumbini province.
- Nepal did not report any death in Epi week 51, same as in the previous week.

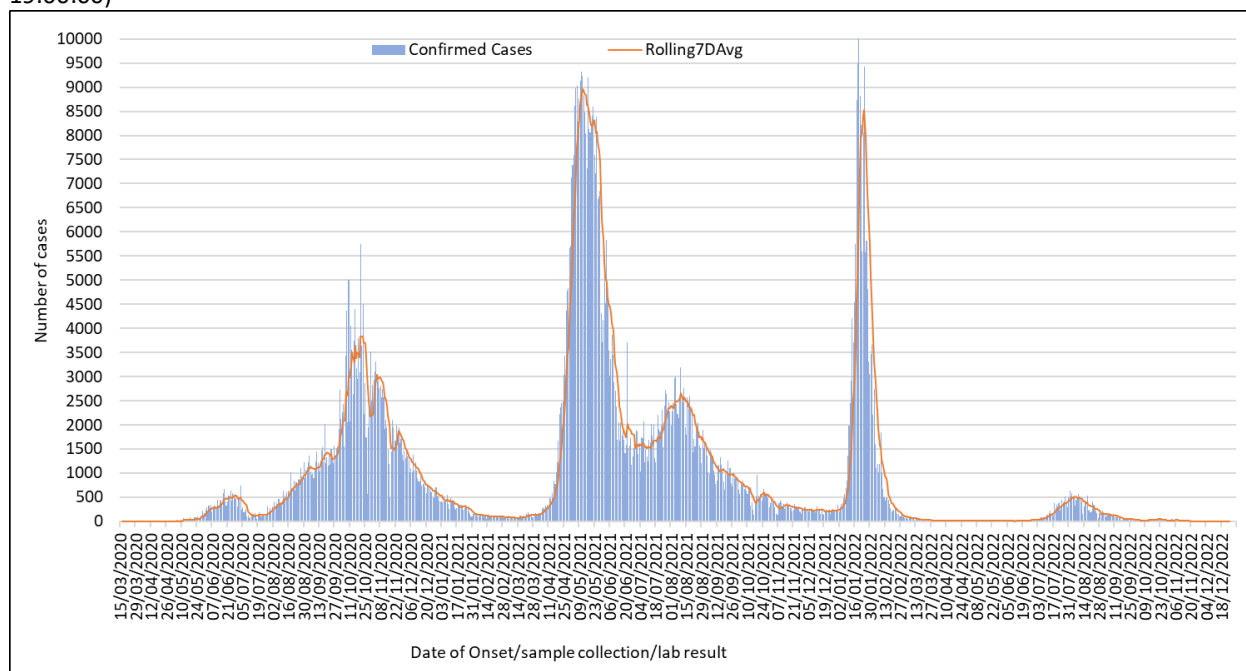
National Influenza Surveillance

- National Influenza Center (NIC)-NPHL reported 6 Diagnostic Influenza samples on EPID-week 51 (19-25 Dec 2022). One sample tested Influenza A/H3 positive. None of the samples tested positive for SARS-CoV-2.
- NIC-NPHL received 25 samples from its sentinel sites i.e. Sukraraj Tropical and Infectious Disease Hospital (STIDH) (15 samples) and Narayani Hospital (10 samples) for Influenza-SARS-CoV-2 testing. The result of the test is awaited.
- Out of the total SARS-CoV-2 samples that tested negative at NPHL on Epi-week 51, 20 samples were tested for Influenza. The result of the test is awaited.
- Provincial Public Health Laboratory (PPHL) from Madhesh, Gandaki, and Karnali Provinces reported testing of 54 samples for Influenza-SARS-CoV-2 using Multiplex kit on Epi-week 51.
 - None of the samples tested positive for Influenza A or B or SARS-CoV-2
 - A total of 1947 samples have been tested by PPHLs till 25 December 2022
- From 3 January 2022 until 25 December 2022:
 - A total of 691 samples tested positive for Influenza (5 Influenza B, 327 Influenza A/H3, 359 Influenza A(H1N1pdm09)) from 7,784 samples (sentinel and non-sentinel samples including SARS-CoV-2 negative SARI and ILI cases).
 - Similarly, 365 samples tested positive for SARS-CoV-2 from 3,348 Influenza negative samples (sentinel/non-sentinel ILI/SARI samples).¹

WHO SEAR countries: Number of COVID-19 confirmed cases and cumulative incidence rate (per 100,000). Link Here- <https://worldhealthorg.shinyapps.io/covid/>

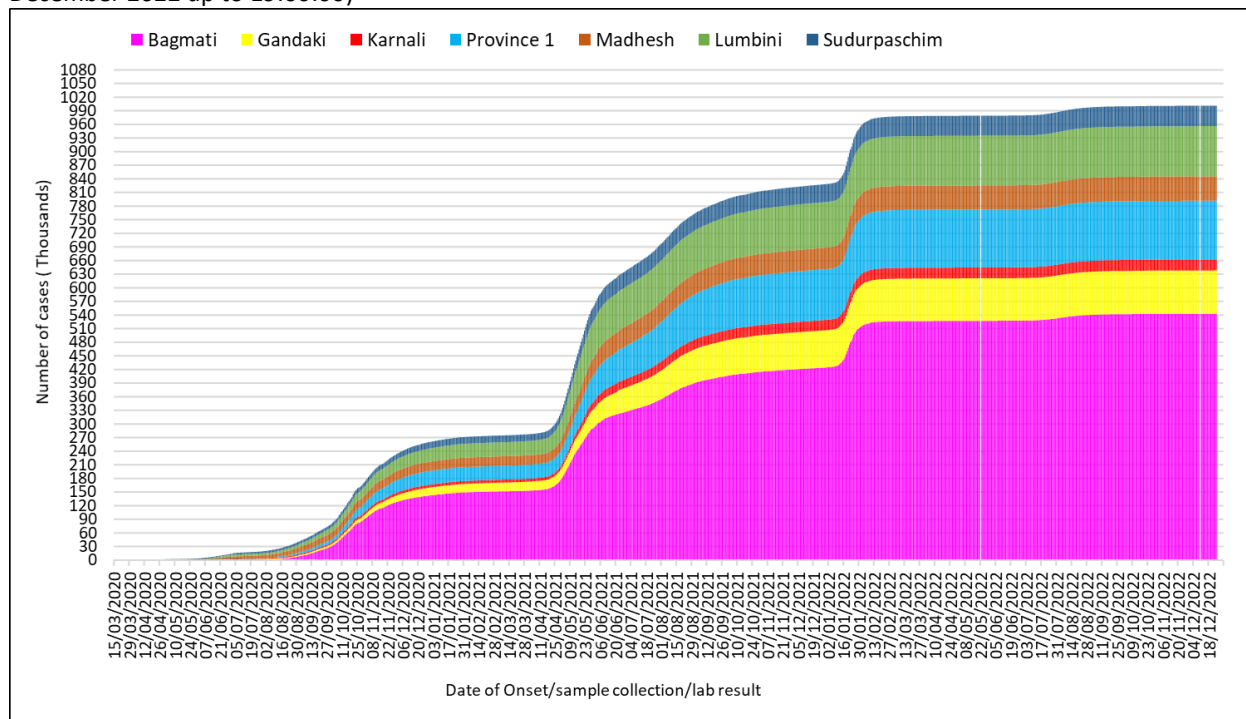
¹ These positive cases are included in the COVID-19 database

Figure 1: RT-PCR confirmed COVID-19 cases and average number of COVID-19 cases over the last seven days, by date of onset/sample/confirmation (N= 1000966)(Data reported on 25 December 2022 up to 19:00:00)



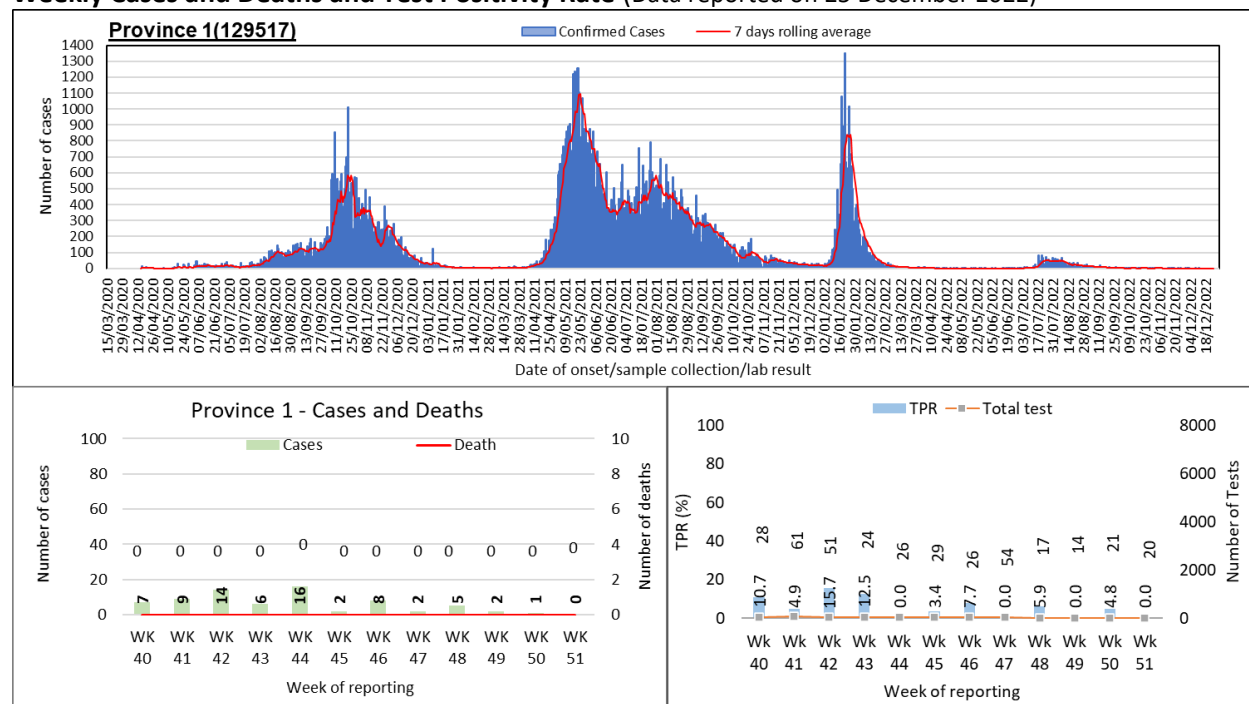
At national level, the first wave of cases between July 2020 and February 2021 was followed by the second wave from the middle of March 2021. Since the middle of December 2021, a third wave of cases soared up exceeding the highest number of single day cases reported in the past surges towards the end of January 2022. Another wave of cases steadily soared up towards the middle of May 2022 following an overall declining trend since the middle of August 2022.

Figure 2: Cumulative case count of RT-PCR confirmed COVID-19 cases (N= 1000966)(Data reported on 25 December 2022 up to 19:00:00)



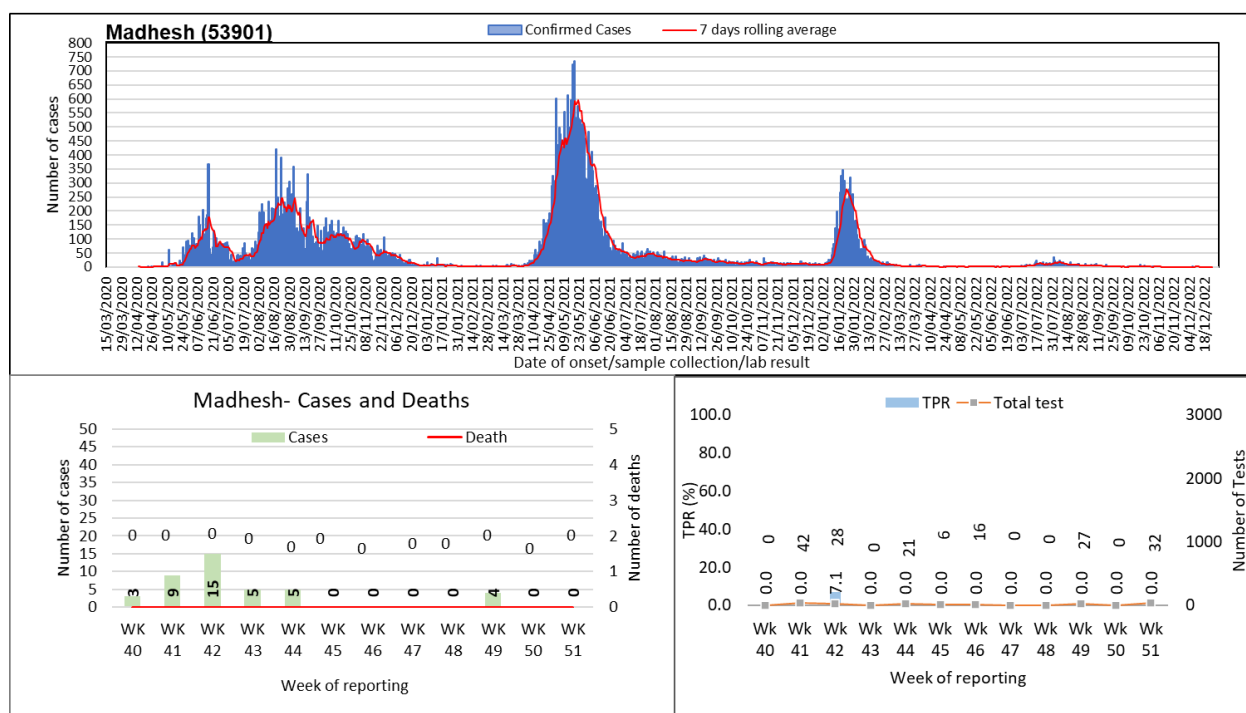
The cumulative case incidence has been increasing in Nepal since the first case confirmed on 23 January 2020. Cases have been largely reported from Bagmati Province followed by Province 1 and Lumbini Province.

Figure 3A1: RT- PCR confirmed COVID-19 cases in Province 1: Trend of Cases, 7 days Rolling Average, Weekly Cases and Deaths and Test Positivity Rate (Data reported on 25 December 2022)



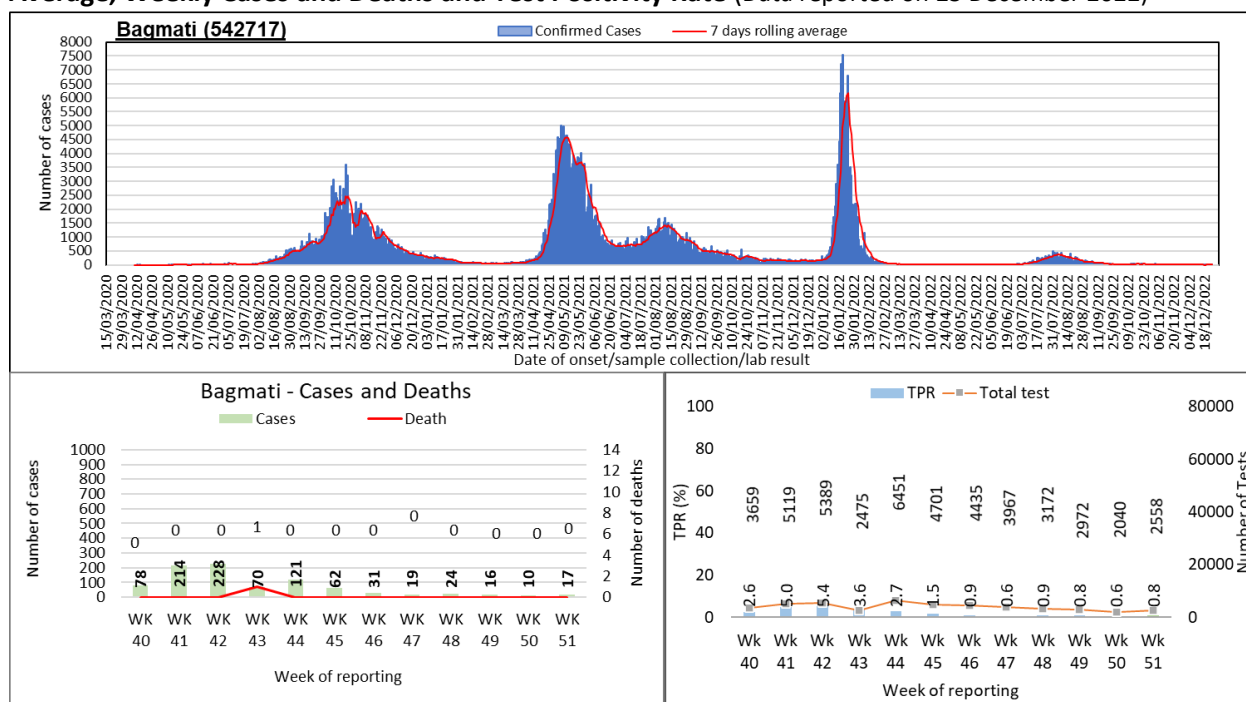
There was no new case reported in the past week in Province 1. Cases have decreased by 100% in the past week compared to previous week. There was no death reported in the past week, same as in the previous week. The test positivity rate in Province 1 decreased to 0.0% in the past week. A total of 20 tests were performed in the past week, 5% less than that in the previous week.

Figure 3A2: RT- PCR confirmed COVID-19 cases in Madhesh Province: Trend of Cases, 7 days Rolling Average, Weekly Cases and Deaths and Test Positivity Rate (Data reported on 25 December 2022)



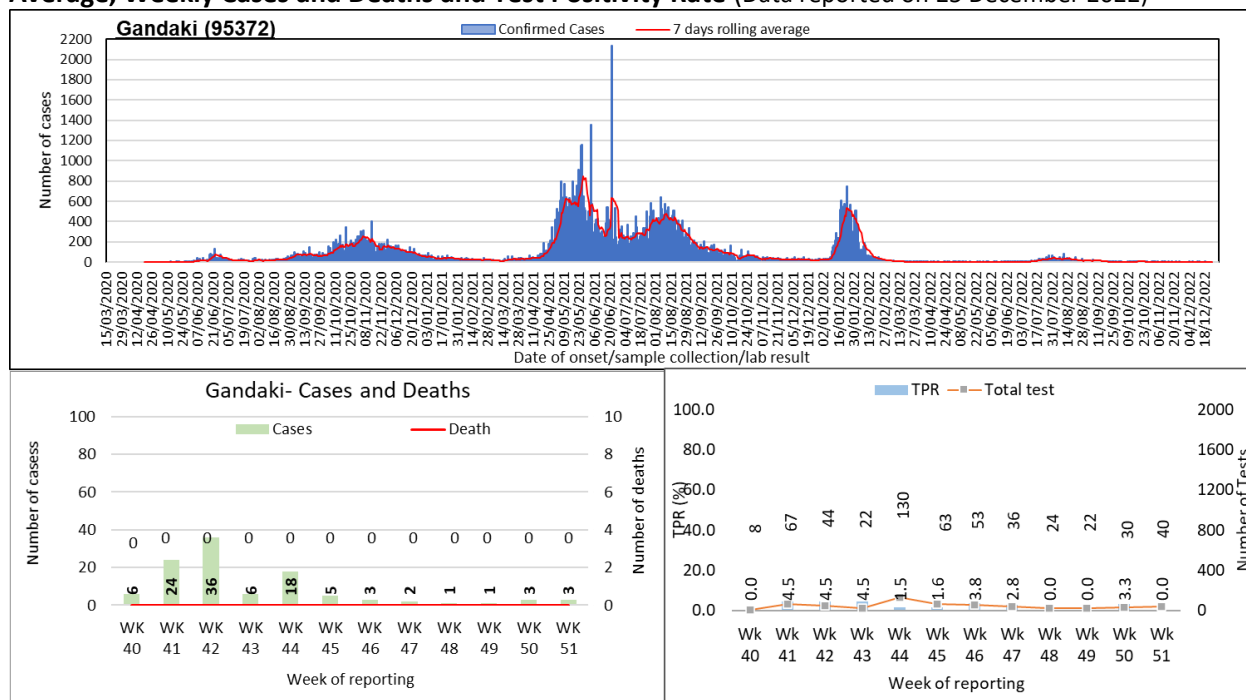
There was no new case reported in the past week in Madhesh province. Cases have decreased by 100% in the past week compared to previous week. There was no death reported in the past week, same as in the previous week. The test positivity rate in Madhesh was 0.0% with a total of 32 tests performed reported in the past week.

Figure 3A3: RT- PCR confirmed COVID-19 cases in Bagmati Province: Trend of Cases, 7 days Rolling Average, Weekly Cases and Deaths and Test Positivity Rate (Data reported on 25 December 2022)



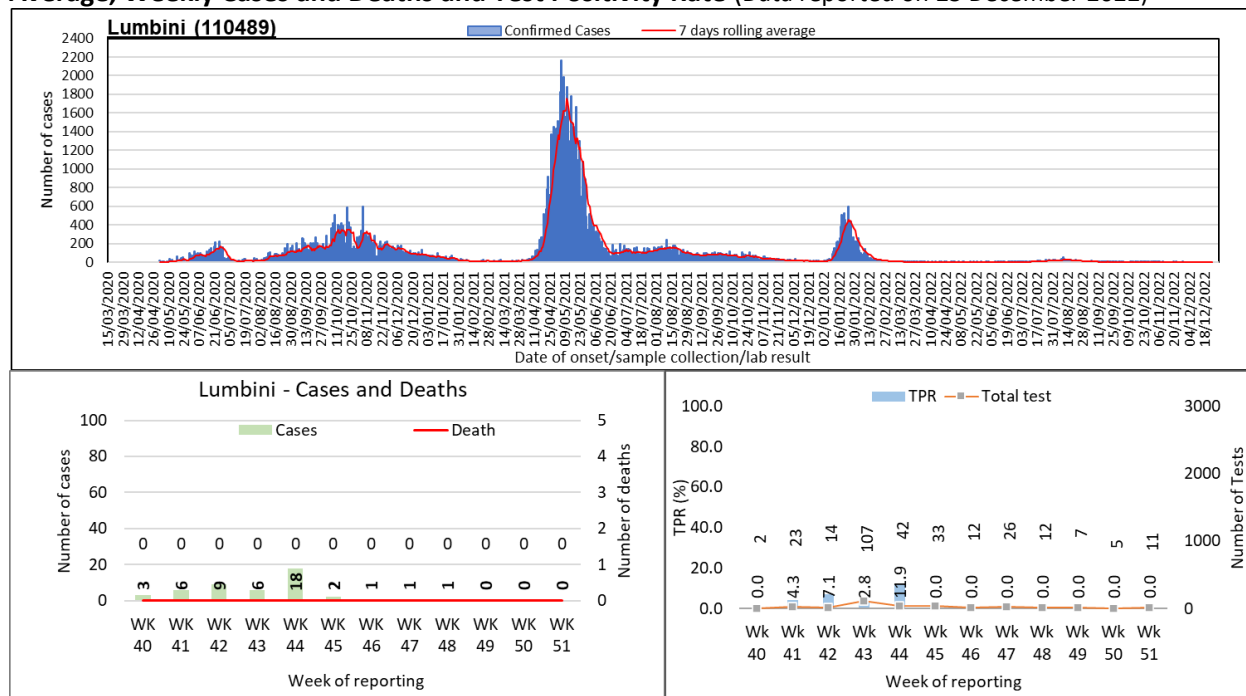
In Bagmati, 17 new cases were reported in the past week. Cases have increased by 70% in the past week compared to previous week. There was no death reported in the past week, same as in the previous week. The test positivity rate in Bagmati increased to 0.8% in the past week. A total of 2558 tests were performed in the past week, 25% more than that in the previous week.

Figure 3A4: RT- PCR confirmed COVID-19 cases in Gandaki Province: Trend of Cases, 7 days Rolling Average, Weekly Cases and Deaths and Test Positivity Rate (Data reported on 25 December 2022)



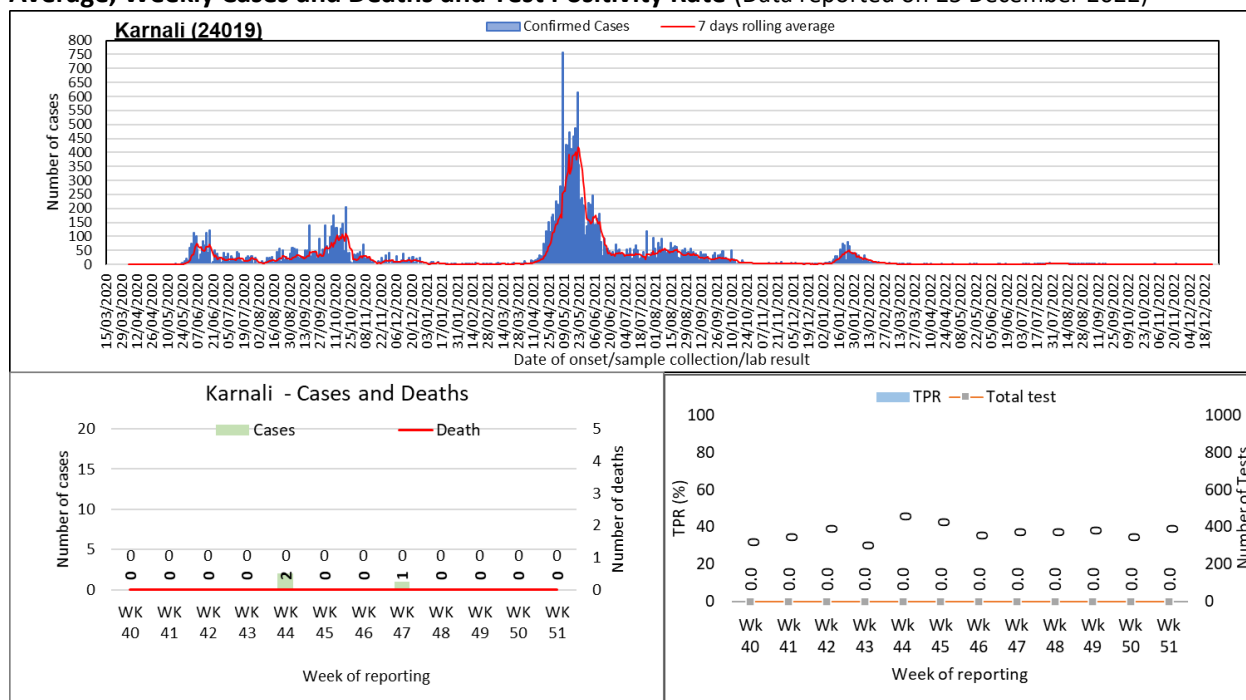
In Gandaki, 3 new cases were reported in the past week, same as in the previous week. There was no death reported in the past week, same as in the previous week. The test positivity rate in Gandaki decreased to 0.0% in the past week. A total of 40 tests were performed in the past week, 33% more than that in the previous week.

Figure 3A5: RT- PCR confirmed COVID-19 cases in Lumbini Province: Trend of Cases, 7 days Rolling Average, Weekly Cases and Deaths and Test Positivity Rate (Data reported on 25 December 2022)



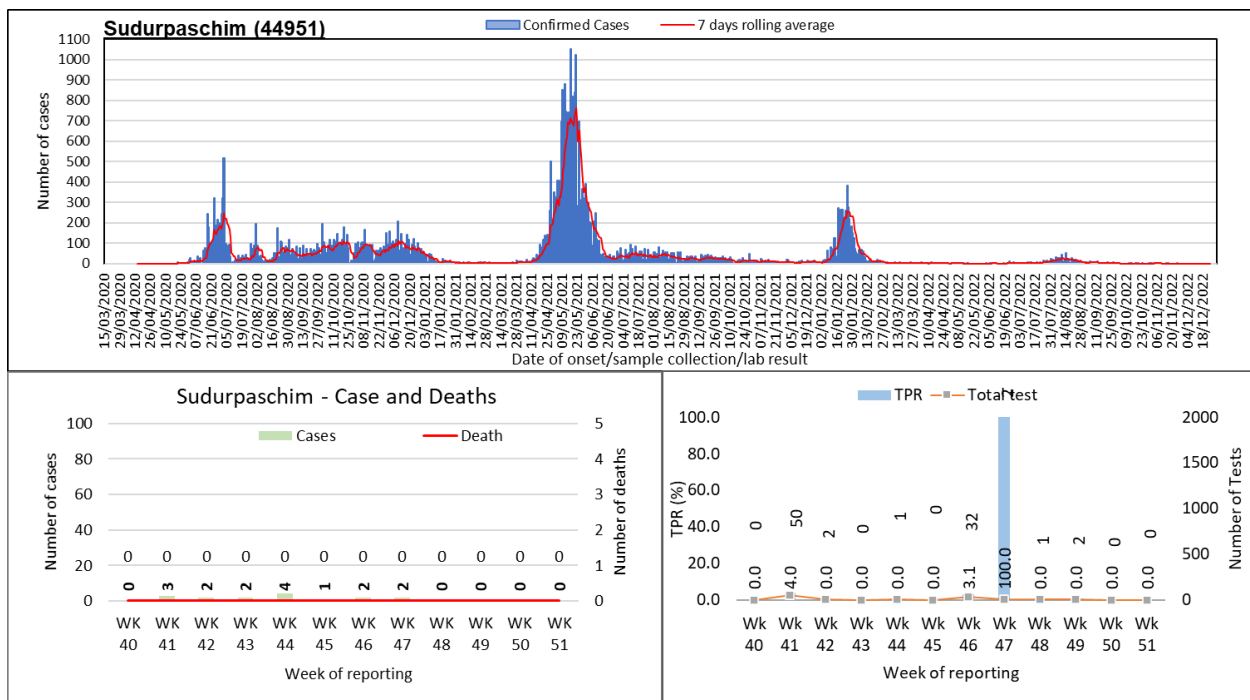
Lumbini reported no new case in the past week, same as in the previous week. There was no death reported in the past week, same as in the previous week. The test positivity rate in Lumbini retained at 0.0% in the past week. A total of 11 tests were performed in the past week, 120% more than that in the previous week.

Figure 3A6: RT- PCR confirmed COVID-19 cases in Karnali Province: Trend of Cases, 7 days Rolling Average, Weekly Cases and Deaths and Test Positivity Rate (Data reported on 25 December 2022)



In Karnali, no new case was reported in the past week, same as in the previous week. There was no death reported in the past week, same as in the previous week. There was no test performed reported in the past week.

Figure 3A7: RT- PCR confirmed COVID-19 cases in Sudurpaschim Province: Trend of Cases, 7 days Rolling Average, Weekly Cases and Deaths and Test Positivity Rate (Data reported on 25 December 2022)



In Sudurpaschim, no new case was reported in the past week, same as in the previous week. There was no death reported in the past week, same as in the previous week. There was no test performed reported in the past week.

Table 1: Summary of confirmed COVID-19 cases, deaths and transmission by provinces (Data reported on 25 December 2022 up to 19:00:00))

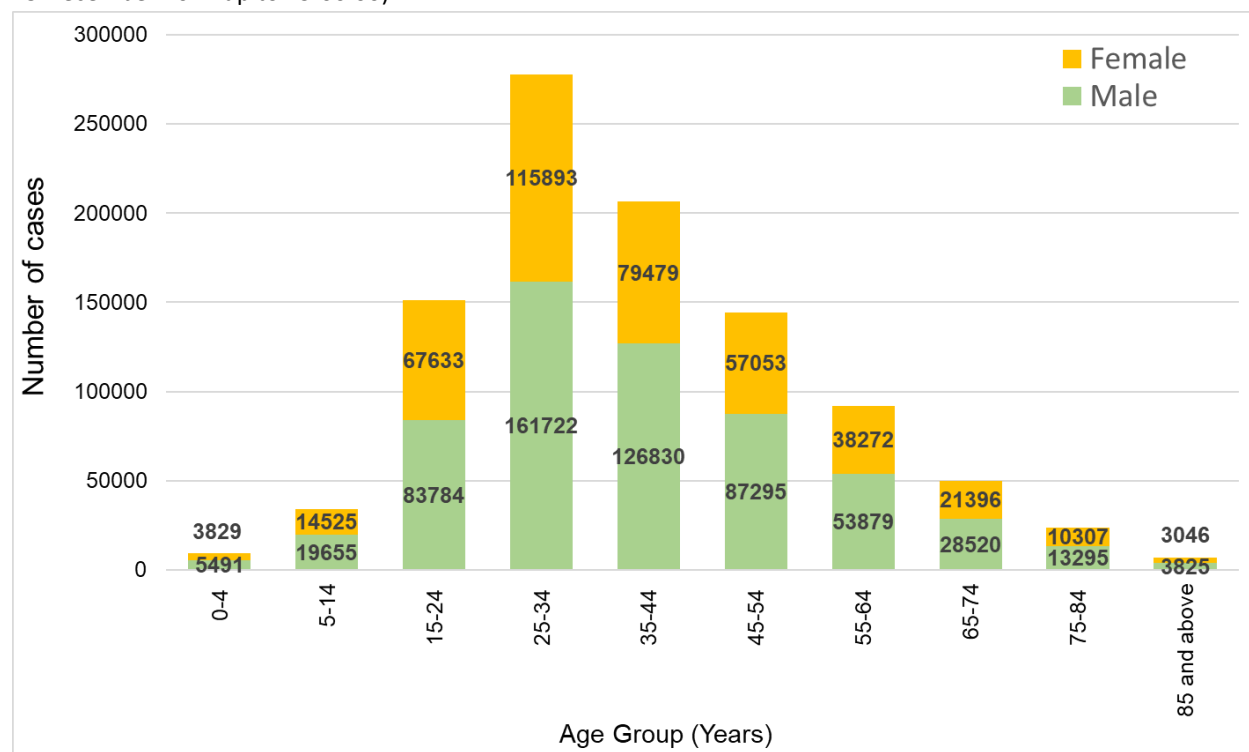
Reporting Province	Total confirmed cumulative cases RTPCR Tests	Total Confirmed cumulative cases Antigen RDT test	Total confirmed cumulative cases	% of total confirmed cumulative cases	Total cumulative deaths	Transmission classification	Total confirmed cases in last 14 days Antigen RDT test	Total confirmed cases in last 14 days RT-PCR test	Total confirmed cases in last 14 days	% of total confirmed cumulative cases in last 14 days	Total Deaths in last 14 days
Province 1	129517	30322	159839	14.1	1722	Community transmission	0	1	1	2.8	0
Madhesh	53901	1178	55079	4.9	783	Community transmission	0	0	0	0.0	0
Bagmati	542717	32765	575482	50.9	5202	Community transmission	1	27	28	77.8	0
Gandaki	95372	24669	120041	10.6	1428	Community transmission	1	6	7	19.4	0
Lumbini	110489	28140	138629	12.3	1874	Community transmission	0	0	0	0.0	0
Karnali	24019	6325	30344	2.7	492	Community transmission	0	0	0	0.0	0
Sudurpaschim	44951	6142	51093	4.5	518	Community transmission	0	0	0	0.0	0
National Total	1000966	129541*	1130507	100	12019	Community transmission	2	34	36	100	0

Total reported in Health Emergency Operation Center (HEOC) Sitrep as of 25 December **152216, IMU reported **129541***

Notes:

1. The source for case data used in this update is from RT- PCR test positivity reported by laboratories from various locations across Nepal, as shared by HEOC Sitrep; and IMU/IHIMS.
2. Case data is screened and cleaned by our data team for double entry, wrong entry and manual errors such as cities name in place of districts, district name in place of province etc.
3. Whereas the test positivity rate is calculated based on the test positivity reported in Sitrep for RT-PCR which may or may not be scrutinized or cleaned the same way and mark the cases on location of the laboratories rather than their place of residence.

Figure 4: Distribution of RT-PCR positive COVID-19 cases by age and sex (N= 995729)(Data reported on 25 December 2022 up to 19:00:00)



Overall, the sex-distribution remains skewed towards males. The incidence of cases is higher in the economically productive age group (15-54 years) for both males and females.

Table 2: Age Specific Case Fatality Ratio and Co-morbidity of Deaths in RT-PCR confirmed COVID-19 cases (N= 1000966)(Data reported on 25 December 2022 up to 19:00:00)

Age Group (Years)	Total confirmed cases	Death (male)	Death (female)	Deaths with any known comorbid condition	Age specific case fatality ratio (%)
0-4	9320	16	23	13	0.42
5-14	34180	13	7	10	0.06
15-24	151417	92	96	70	0.12
25-34	277615	387	265	151	0.23
35-44	206309	875	452	281	0.64
45-54	144348	1396	645	574	1.41
55-64	92151	1690	803	782	2.71
65-74	49916	1640	893	957	5.07
75-84	23602	1228	659	773	8
85+	6871	524	289	279	11.83
Unknown	5237	19	7	11	0.5
National	1000966	7880	4139	3901	1.20

$$\text{Case Fatality ratio (CFR, in\%)} = \frac{\text{Number of deaths from disease}}{\text{Number of confirmed cases of disease}} \times 100$$

COVID-19 positive lab result is temporally associated with death; causal association under investigation.

A total of 12,019 deaths have been reported. Out of the total deaths, 7,880 (65.6%) were male and 4,139 (34.4%) were female. Amongst the deaths, 3,901 persons (32.5%) had at least one known comorbidity. The age specific case fatality ratio (CFR) progressively increases with age, ranging from 0.06% to 11.8%.

PREPAREDNESS AND RESPONSE

What are the Government of Nepal (GoN) & the Ministry of Health & Population (MoHP) doing?

- From 3 November 2022, the Government of Nepal has started administering COVID-19 second dose of booster vaccination for people aged 55 and above and the vulnerable population (immune-deficiency/chronic patients, pregnant women, and health workers) group.

What is the WHO Country Office for Nepal doing?

Laboratory Diagnosis

- WHO Nepal provided technical support to the National Public Health Laboratory (NPHL) in the dissemination of results of genomic sequencing of SARS-CoV2.

Technical Expertise and Training

- Continued routine work from the team of Technical Expertise and Training²
- WHO Nepal provided technical and financial support in conducting the following programs:
 - A four-day training on Pediatric Essential Critical Care Training (PECCT) organized by the National Health Training Centre (NHTC) at Paropakar Maternity and Women's Hospital in Kathmandu from 21 to 24 December 2022. A total of 16 participants, which included doctors and nursing staff from different hospitals in Bagmati Province, were present.
 - A three-day training of trainers (TOT) on Acute Respiratory Distress Syndrome (ARDS) management organized by NHTC from 20 to 22 December 2022 at the National Trauma Center, Kathmandu. A team of 10 trainers and 15 participants (Anesthesiologists, Internists, Intensivists, and nurses working in Intensive Care Units) from six provinces were part of the training.

² The routine works of the technical expertise and training team included technical support to the Ministry of Health and Population and its department for developing different guidelines/manuals, conducting health programs, and conducting capacity building activities. To perform these activities, the team coordinates and discuss with relevant government authorities and partners for effective planning and conducting the various activities.



(Top) A trainer demonstrating basic airway ventilation to the participants during breakout sessions at the PECCT training in Kathmandu, Photo credit: WHO Nepal/M.Karmacharya; (Bottom) Director-General of the Department of Health Sciences giving his remarks during ARDS training in Kathmandu, Photo credit: WHO Nepal/S. Adhikari

Operational Support and Logistics

- Continued routine work from the team of Operation Support and Logistics³.

³ The routine works of the operation support and logistics team included technical support to the Management Division of the Department of Health Services for the forecasting, quantification, procurement, and distribution plan of COVID-19 commodities. The other routine activities included daily operational support to the WHO country office and seven provincial health emergency operation centers, including fleet and travel management and the procurement of required logistics and supplies.

Risk Communication and Community Engagement

- Regular support was provided to MoHP for the weekly media briefing. The briefing held on 21 December 2022 covered the national update on COVID-19, vaccine coverage, and safety measures to be followed during winter to keep ourselves protected from flu, pneumonia, and other respiratory diseases. The briefing also broadcasted information on harmful practices of burning waste and National Suicide Prevention Helpline Number. The briefing is livestreamed every Wednesday at 4:15 PM on Nepal Television and MoHP's Official Facebook page.
- The new episode of *Paanch Maa Bigyaan*, on minimizing infections at healthcare facilities, was shared via SoundCloud (link [here](#)), Facebook (link [here](#)), and Instagram (link [here](#)).
- Episode 83 of *Science in 5 (Minimize infection at health-care facilities)* was translated, dubbed, and published via the following links:
 - Nepali: Facebook [link](#); OneDrive [link](#); YouTube [link](#); Instagram [link](#); Twitter [link](#)
 - Maithili: Facebook [link](#); OneDrive [link](#); YouTube [link](#)
- Episode 84 of *Science in 5 (Future of health)* was translated, dubbed, and published via the following links:
 - Nepali: Facebook [link](#); OneDrive [link](#); YouTube [link](#); Instagram [link](#); Twitter [link](#)
 - Maithili: Facebook [link](#); OneDrive [link](#); YouTube [link](#)
- IEC materials on the following topics were shared via social media:
 - Importance of healthy habits, including implementing all recommended COVID-19 preventive measures, during the holiday season,
 - Importance of flu vaccinations, especially for vulnerable people,
 - Recommendations to better understand the origins of and factors for the emergence and re-emergence of Mpox.
- The *Weekly COVID-19 EPI Dashboard* was uploaded on *ReliefWeb* (link [here](#)) and WHO, Country Office for Nepal, website (link [here](#)).
- The *Weekly WHO Nepal COVID-19 Situation Update* was uploaded on *ReliefWeb* (link [here](#)) and WHO, Country Office for Nepal, website (link [here](#)).
- The *Focused COVID-19 and Health Media Monitoring* was uploaded on *ReliefWeb* (link [here](#)).
- WHO press briefings on COVID-19 are being shared via Facebook and Twitter.

What are the health clusters partners doing?

- Continued routine work from the team of Partner Coordination and Donor Relation⁴
- UNICEF and WHO are providing overall support for COVID-19 vaccination campaign in close coordination with health partners and donors.
- All members of the Health Cluster are supporting the COVID-19 vaccination campaign of Nepal.
- Health partners are continuing their technical, operational, and logistics support for COVID-19 responses to health-related offices and institutions throughout the country.

⁴ The routine works include coordinating with all the divisions, units, centers of Ministry of Health and Population (MoHP) and Department of Health Services (DoHS), and the health partners for effective conduction of Health Cluster Coordination meeting. Furthermore, the works included the documentation and distribution of meeting minutes, health partner's support updates in the 3Ws (Who, What, Where) and thematic mapping, updates of WHO's support in the UNRCO 3W sheet, participate in multi-sectoral and emergency and disaster preparedness and response platforms and activities and the humanitarian country team operational meetings. Moreover, necessary support for effective coordination of Health Emergency Operation Centre (HEOC) with different stakeholders is provided.

- COVID-19 consultation is being provided continuously by specialist teams through tele-medicine services.

WHO's STRATEGIC OBJECTIVES FOR COVID-19 RESPONSE- [link here](#) **RECOMMENDATION AND ADVICE FOR THE PUBLIC**

- [Protect yourself](#)
- [Questions and answers](#)
- [Travel advice](#)
- [EPI-WIN](#): tailored information for individuals, organizations and communities

USEFUL LINKS

- MoHP COVID-19 official portal is available [here](#).
- Nepal COVID-19 regular updates and resources are available [here](#)
- For COVID-19 updates from the WHO South-East Asia Region Office, please visit [here](#).
- For information about coronavirus disease (COVID-19) Pandemic from WHO, please visit [here](#)
- Please visit this [site](#) for all technical guidance from WHO.
- Online courses on COVID-19 from WHO can be found [here](#)
- WHO Coronavirus (COVID-19) Dashboard can be found [here](#)
- Visit the WHO Nepal [Facebook page](#) and webpage on COVID-19 [here](#)

CONTACT DETAILS

WHO Representative

Dr. Rajesh Sambhajirao Pandav
WHO Representative to the Government of Nepal
Email: pandavr@who.int

WHO Incident Manager/ Health Cluster Co-lead

Dr. Allison Gocotano
Team Leader - WHO Health Emergencies Program (WHE)
WHO Country Office for Nepal
Email: gocotanoa@who.int

Communication/Media Focal Point

Ms. Tsering Dolkar Gurung
Media, Communication and Public Information Officer
WHO Country Office for Nepal
Email: gurungt@who.int