

Situation Update #145 - Coronavirus Disease 2019 (COVID-19)

WHO Country Office for Nepal

Reporting Date: 16 - 22 January 2023 (Epi Week 3)

HIGHLIGHTS

(Data published in the MoHP Situation Report as of 22 January 2023 and same data published in EDCC Report as of 23 January 2023)

- Of the total RT-PCR confirmed COVID-19 cases, 98.8% (989,034) of cases have recovered, 0.01% (22) are active cases and 1.2% (12,020) are deaths.
- Among the new RT-PCR confirmed cases (25) reported this week, 28% (7) are from Kathmandu district. Majority of the new cases 36% (9) have been reported from Kathmandu Valley (Kathmandu, Lalitpur and Bhaktapur), Bagmati Province.

COVID-19 vaccination coverage status (as of 17 January 2022)

Vaccine	First dose	Second dose
Covi-AstraZeneca	5,569,444	4,829,949
Vero Cell	10,389,443	9,259,657
Janssen	3,538,433	
Pfizer	4,955,043	3,702,185
Moderna	3,226,116	2,828,894

SITUATION OVERVIEW

(Data as of 22 January 2023)

NEPAL

Cumulative confirmed cases

RT-PCR: 1,001,076

Antigen RDT: 152,219

Cumulative deaths: 12,020

Cumulative tests

RT-PCR: 6,000,597

Antigen RDT: 1,492,238

SOUTH-EAST ASIA REGION

Cumulative cases (%)

60,752,516 (9%)

Cumulative deaths (%)

803,596 (12%)

GLOBAL

Cumulative cases (%)

664,454,642 (100%)

Cumulative deaths (%)

6,721,580 (100%)

NEPAL EPIDEMIOLOGICAL SITUATION

- Since 9 May 2021, all 7 Provinces in the country are experiencing community transmission.
- Since the start of the COVID-19 pandemic, a total of 78.2% (782,819/1,001,076) of RT-PCR confirmed cases were reported from three provinces, namely - Province 1, Bagmati Province, and Lumbini Province. The Kathmandu Valley area (Kathmandu, Bhaktapur, Lalitpur) in Bagmati Province has substantially high case load with 44.1% of national total (441,708/1,001,076), and 81.4% of the provincial total (441,708/542,786).
- Province-wise, RT-PCR test positivity rate in Epi Week 03 ranged from 0.0% (Madhesh, Gandaki, Lumbini and Sudurpaschim Provinces) to 30.0% (Province 1), with a national positivity rate at 0.8%. Karnali Province did not report any RT-PCR test performed in the last week.
- Nepal reported a 14% decrease in the number of new RT-PCR confirmed cases (n=25) in Epi week 03 compared to that in the previous week. Of these total cases reported last week, 84% of the cases have been reported from Province 1, Bagmati, and Lumbini Province.
- Nepal did not report any death in Epi week 03, same as in the previous week.

National Influenza Surveillance

- National Influenza Center (NIC)-NPHL reported 21 diagnostic Influenza samples on Epi-week 3 (16-22 Jan 2023). Seven samples tested Influenza A/H3 positive and 1 sample tested Influenza B Victoria positive. None of the samples tested positive for SARS-CoV-2.
- NIC-NPHL received 15 samples from its sentinel sites i.e., Sukraraj Tropical and Infectious Disease Hospital (9 samples), TUTH (5 samples) and Kanti Children's Hospital (1 sample) Influenza-SARS-CoV-2 testing. Five samples tested Influenza A/H3 Positive. None of the samples tested positive for SARS-CoV-2.
- Provincial Public Health Laboratories (PPHLs) reported testing of 85 samples for Influenza-SARS-CoV-2 using Multiplex kit on Epi-week 3 (16-22 Jan 2023). Four samples tested Influenza A/H3. A total of 267 samples have been tested by PPHLs till 22 January 2023.

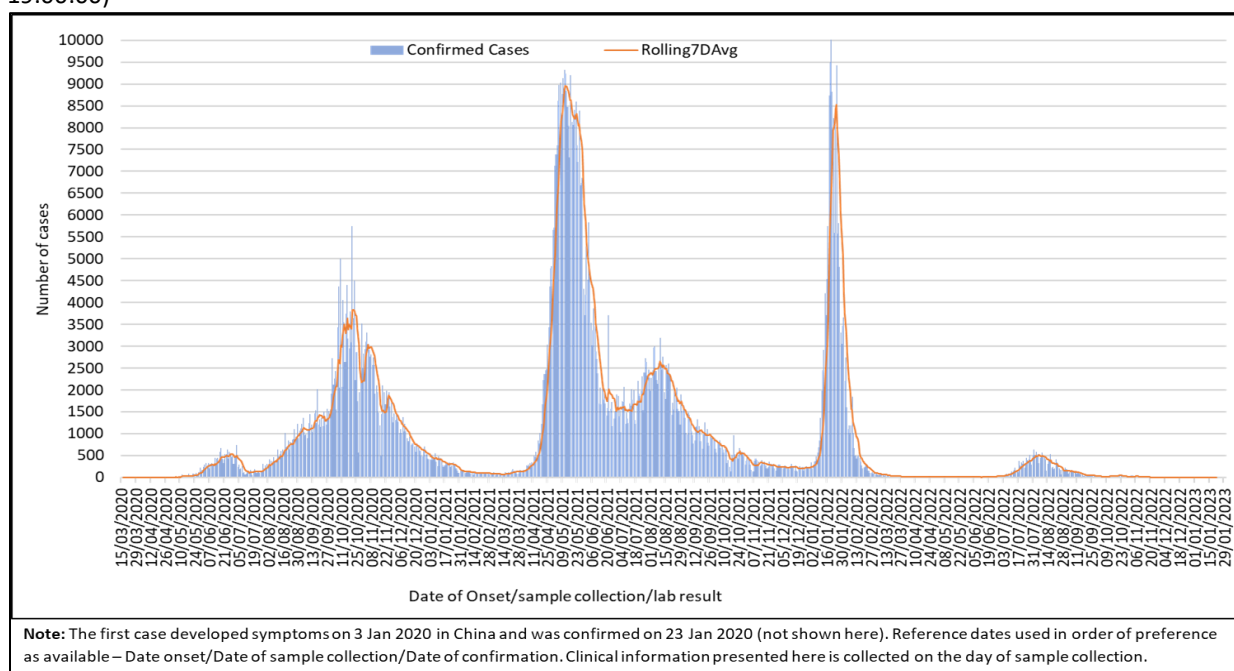
From 2 January 2023 until 22 January 2023:

- A total of 58 samples have tested positive for Influenza (4 Influenza B, 44 Influenza A/H3 and 10 Influenza A(H1N1pdm09) from 458 samples (sentinel and non-sentinel samples including SARS-CoV-2 Negative SARI and ILI cases).
- Similarly, 2 samples tested positive for SARS-CoV-2 from 407 Influenza samples (Sentinel/non-sentinel ILI/SARI samples).¹

WHO SEAR countries: Number of COVID-19 confirmed cases and cumulative incidence rate (per 100,000). Link Here- <https://worldhealthorg.shinyapps.io/covid/>

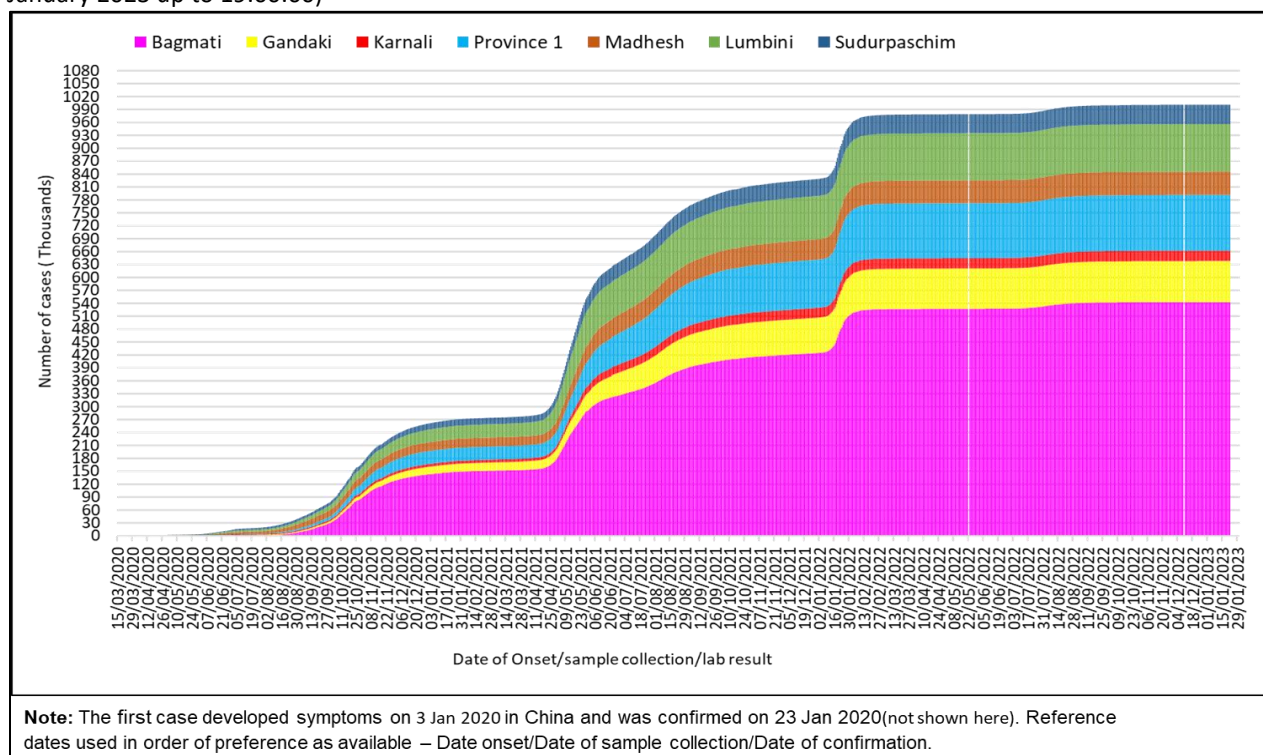
¹ These positive cases are included in the COVID-19 database

Figure 1: RT-PCR confirmed COVID-19 cases and average number of COVID-19 cases over the last seven days, by date of onset/sample/confirmation (N= 1001076)(Data reported on 22 January 2023 up to 19:00:00)



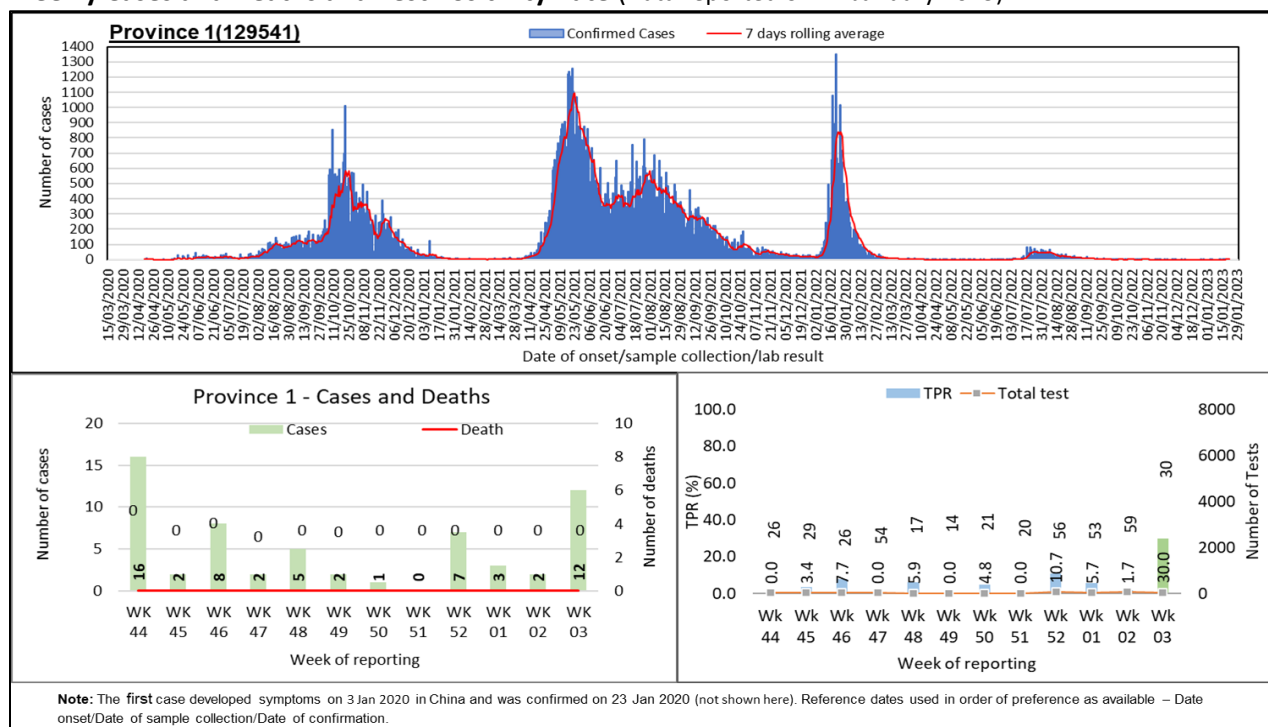
At national level, the first wave of cases between July 2020 and February 2021 was followed by the second wave from the middle of March 2021. Since the middle of December 2021, a third wave of cases soared up exceeding the highest number of single day cases reported in the past surges towards the end of January 2022. Another wave of cases steadily soared up towards the middle of May 2022 following an overall declining trend since the middle of August 2022.

Figure 2: Cumulative case count of RT-PCR confirmed COVID-19 (N= 1001076)(Data reported on 22 January 2023 up to 19:00:00)



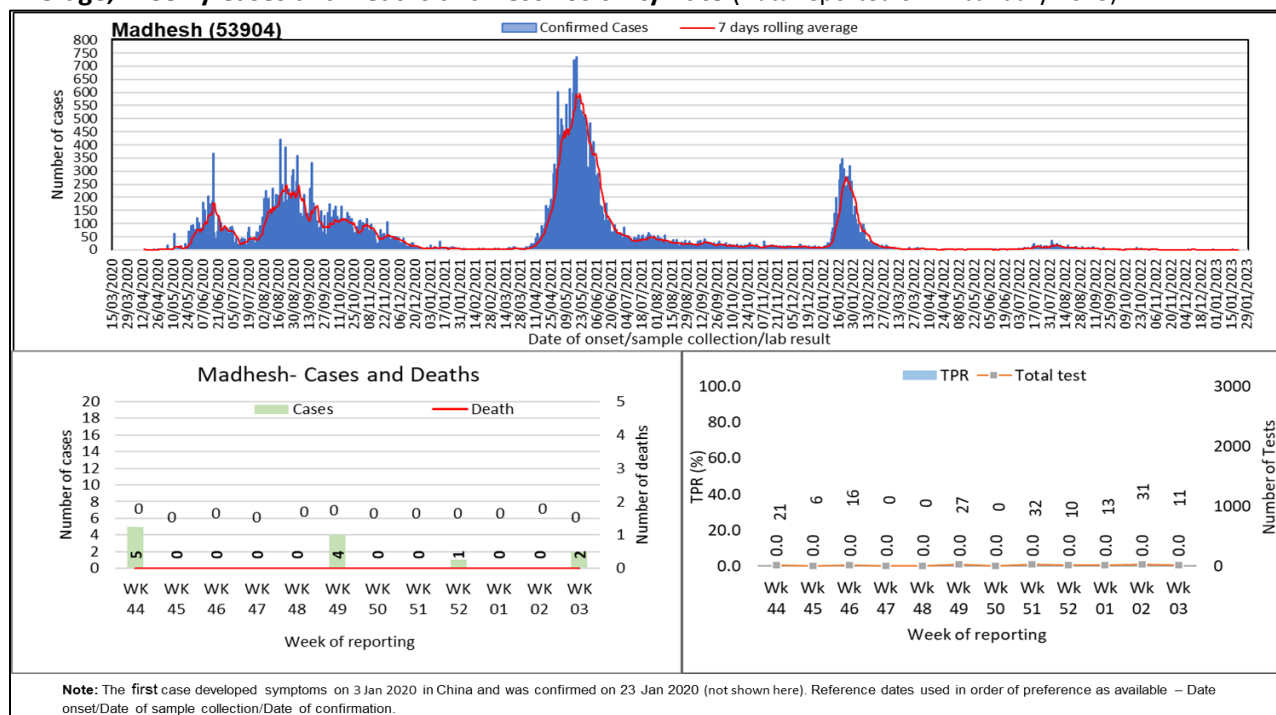
The cumulative case incidence has been increasing in Nepal since the first case confirmed on 23 January 2020. Cases have been largely reported from Bagmati Province followed by Province 1 and Lumbini Province.

Figure 3A1: RT- PCR confirmed COVID-19 cases in Province 1: Trend of Cases, 7 days Rolling Average, Weekly Cases and Deaths and Test Positivity Rate (Data reported on 22 January 2023)



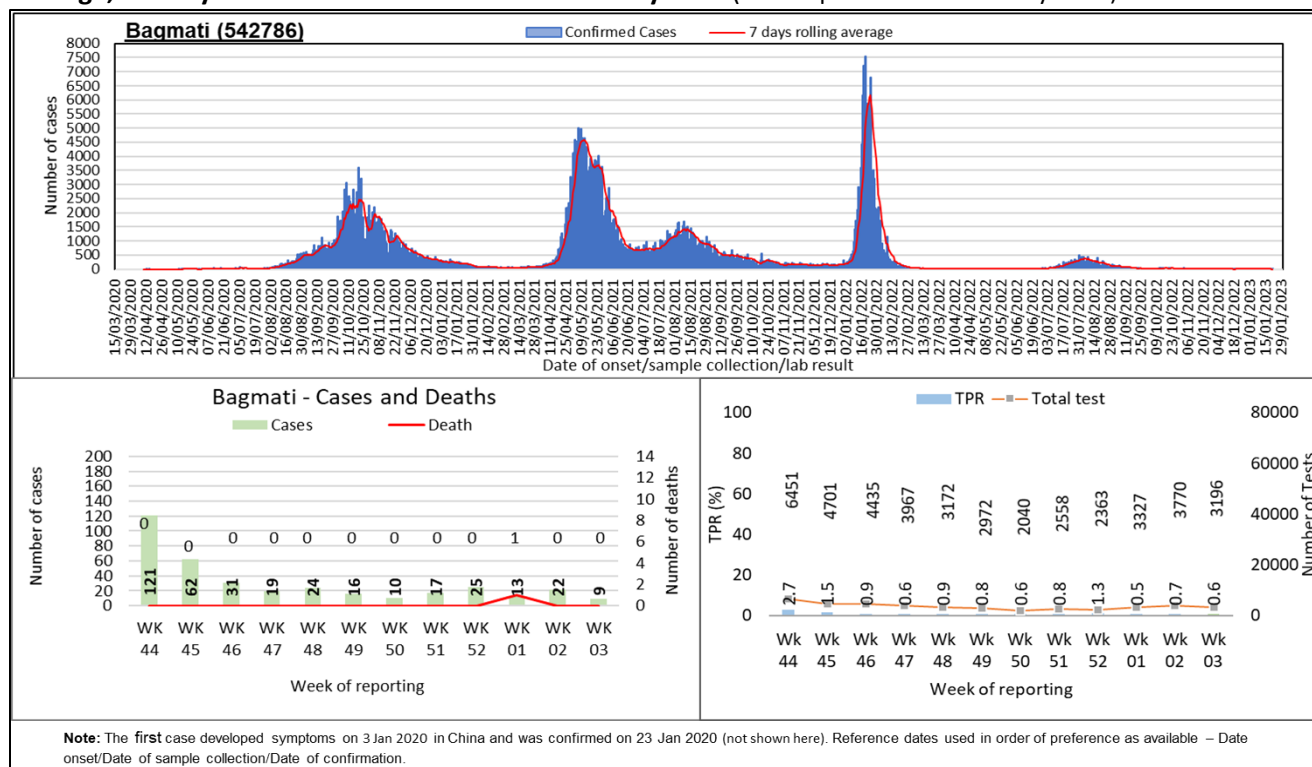
There were 12 new cases reported in the past week in Province 1. Cases have increased by 500% in the past week compared to that in the previous week. There was no death reported in the past week, same as in the previous week. The test positivity rate in Province 1 increased to 30.0% in the past week. A total of 30 tests were performed in the past week, 49% less than that in the previous week.

Figure 3A2: RT- PCR confirmed COVID-19 cases in Madhesh Province: Trend of Cases, 7 days Rolling Average, Weekly Cases and Deaths and Test Positivity Rate (Data reported on 22 January 2023)



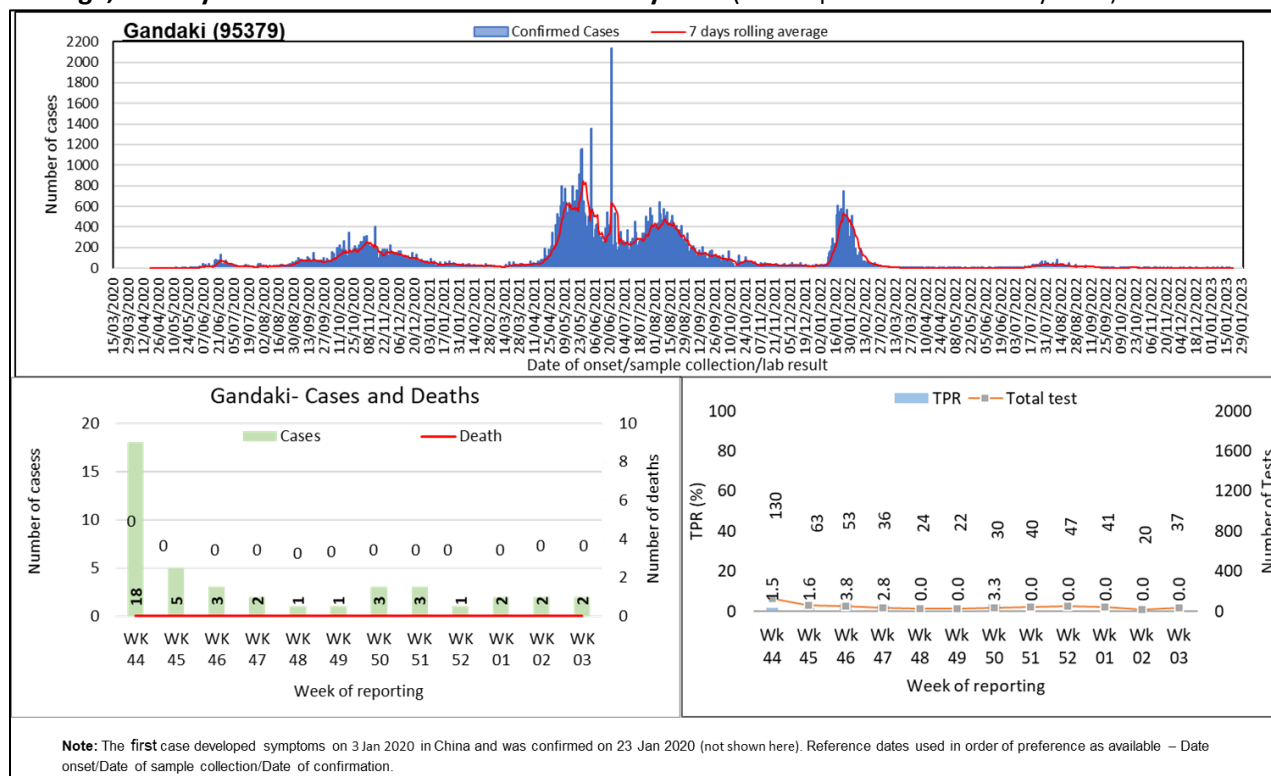
There were 2 new cases reported in the past week in Madhesh Province. Cases have increased in the past week compared to none in the previous week. There was no death reported in the past week, same as in the previous week. The test positivity rate in Madhesh Province retained at 0.0% in the past week. A total of 11 tests were performed in the past week, 65% less than that in the previous week.

Figure 3A3: RT- PCR confirmed COVID-19 cases in Bagmati Province: Trend of Cases, 7 days Rolling Average, Weekly Cases and Deaths and Test Positivity Rate (Data reported on 22 January 2023)



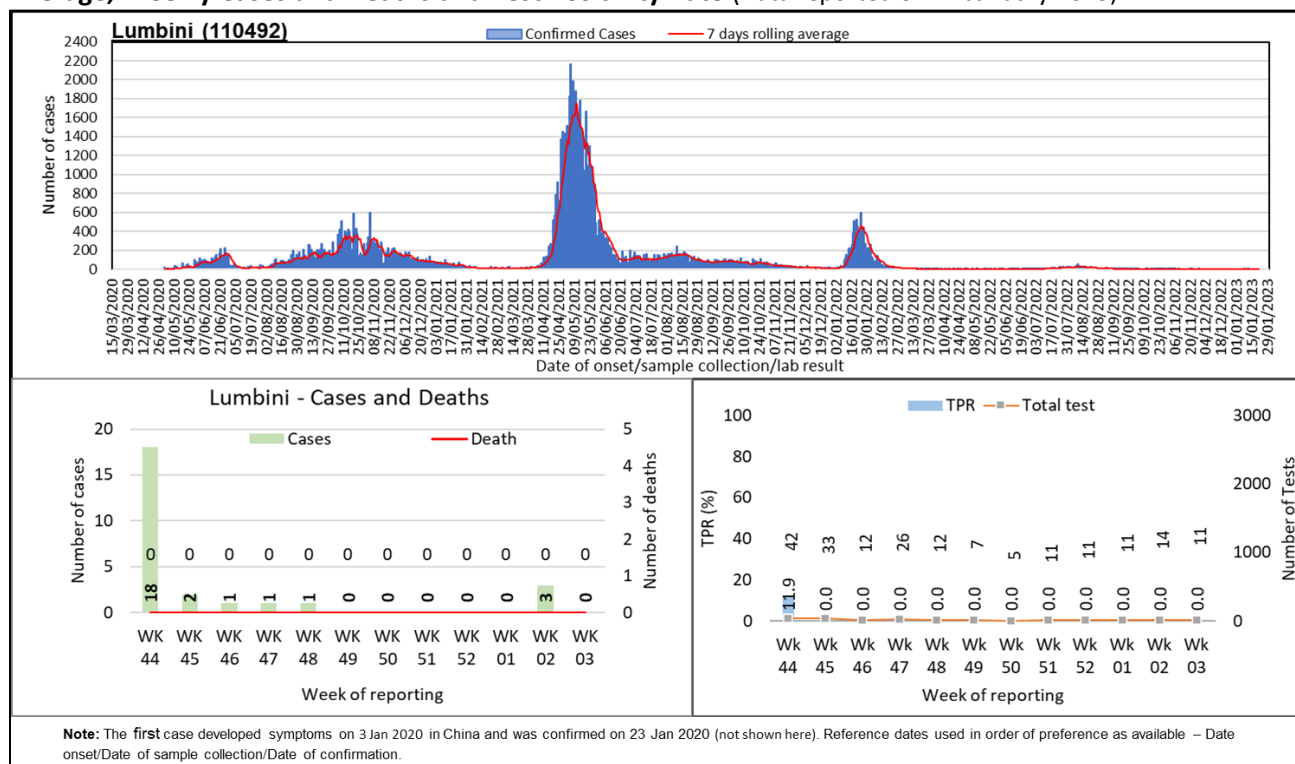
In Bagmati Province, 9 new cases were reported in the past week. Cases have decreased by 59% in the past week compared to that in the previous week. There was no death reported in the past week, 100% decrease compared to that in the previous week. The test positivity rate in Bagmati Province decreased to 0.6% in the past week. A total of 3196 tests were performed in the past week, 15% less than that in the previous week.

Figure 3A4: RT- PCR confirmed COVID-19 cases in Gandaki Province: Trend of Cases, 7 days Rolling Average, Weekly Cases and Deaths and Test Positivity Rate (Data reported on 22 January 2023)



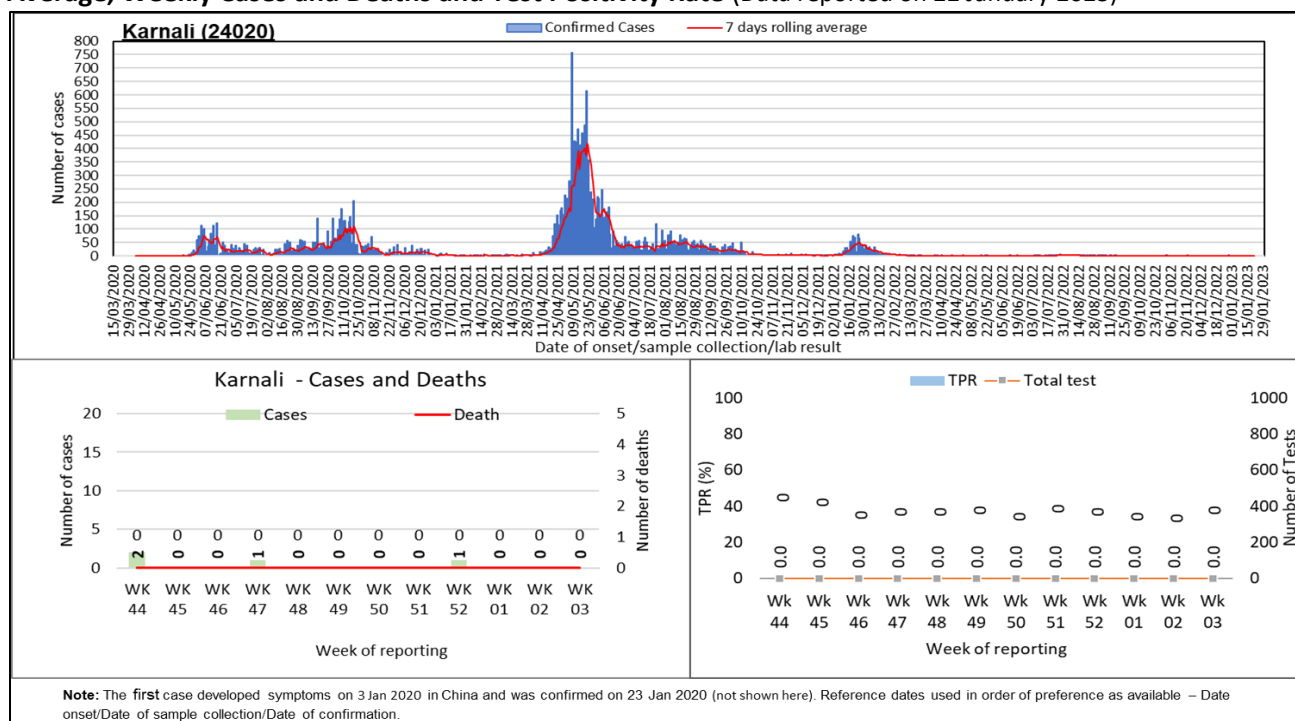
In Gandaki Province, 2 new cases were reported in the past week, same as in the previous week. There was no death reported in the past week, same as in the previous week. The test positivity rate in Gandaki Province retained at 0.0% in the past week. A total of 37 tests were performed in the past week, 85% more than that in the previous week.

Figure 3A5: RT- PCR confirmed COVID-19 cases in Lumbini Province: Trend of Cases, 7 days Rolling Average, Weekly Cases and Deaths and Test Positivity Rate (Data reported on 22 January 2023)



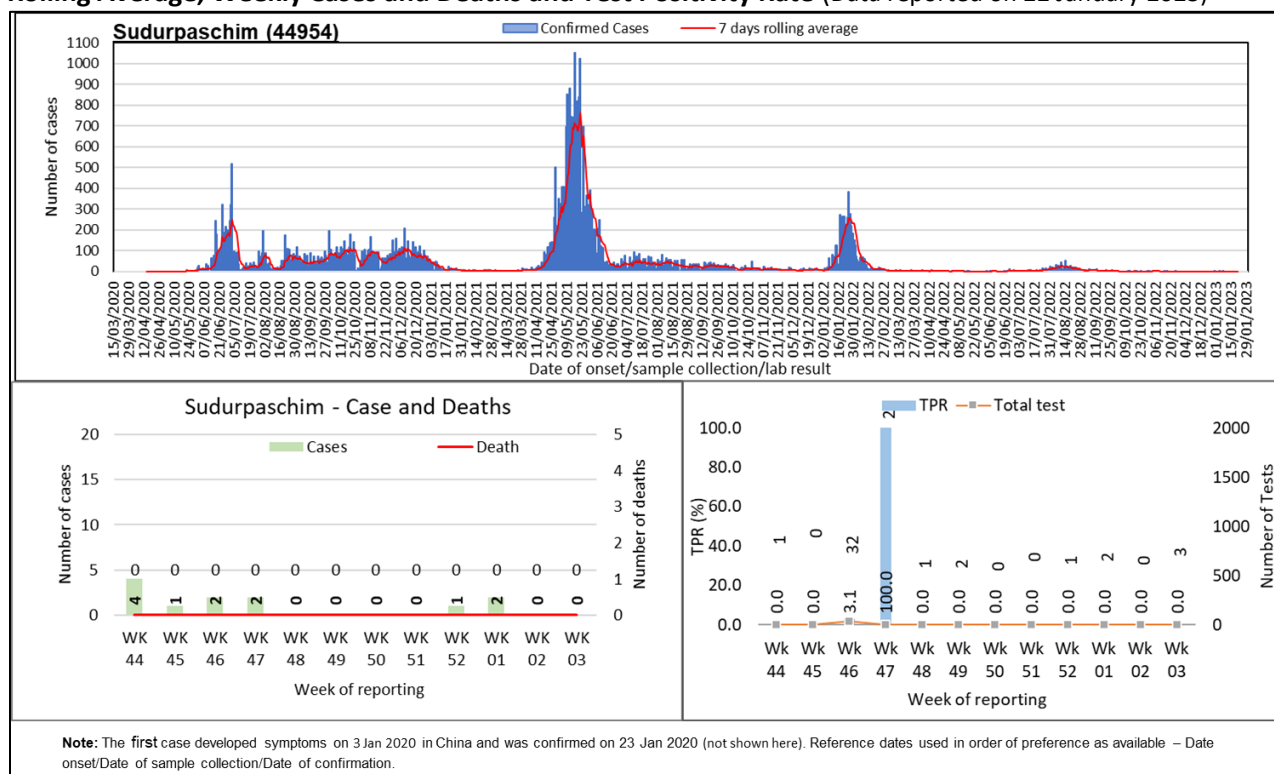
Lumbini Province reported no new cases in the past week. Cases have decreased by 100% in the past week compared to that in the previous week. There was no death reported in the past week, same as in the previous week. The test positivity rate in Lumbini retained at 0.0% in the past week. A total of 11 tests were performed in the past week, 21% less than that in the previous week.

Figure 3A6: RT- PCR confirmed COVID-19 cases in Karnali Province: Trend of Cases, 7 days Rolling Average, Weekly Cases and Deaths and Test Positivity Rate (Data reported on 22 January 2023)



In Karnali Province, no new case was reported in the past week. Cases have decreased by 100% in the past week compared to that in the previous week. There was no death reported in the past week, same as in the previous week. There was no test performed reported in the past week.

Figure 3A7: RT- PCR confirmed COVID-19 cases in Sudurpaschim Province: Trend of Cases, 7 days Rolling Average, Weekly Cases and Deaths and Test Positivity Rate (Data reported on 22 January 2023)



In Sudurpaschim Province, no new case was reported in the past week. Cases have decreased by 100% in the past week compared to that in the previous week. There was no death reported in the past week, same as in the previous week. The test positivity rate in Sudurpaschim was 0.0% in the past week. A total of 3 tests were performed in the past week, compared to none reported in the previous week.

Table 1: Summary of confirmed COVID-19 cases, deaths and transmission by Provinces (Data reported on 22 January 2023 up to 19:00:00)

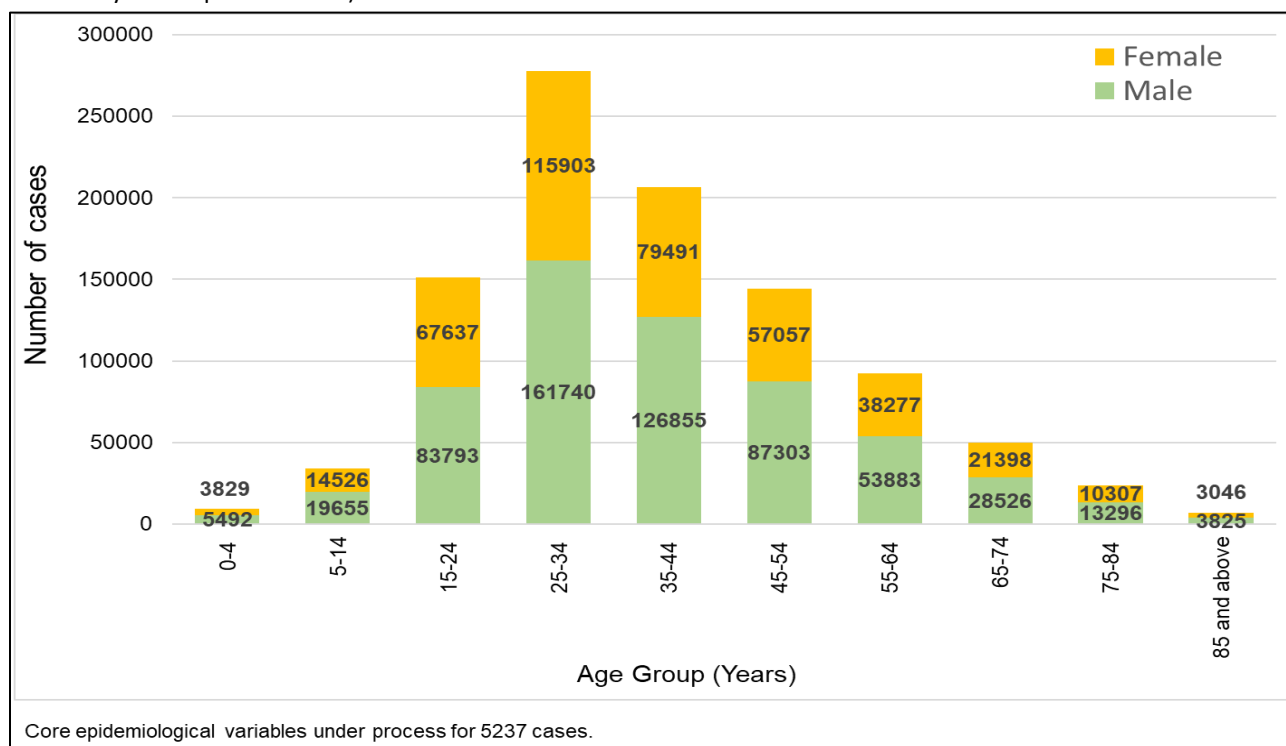
Reporting Province	Total confirmed cumulative cases RT-PCR Tests	Total Confirmed cumulative cases Antigen RDT test	Total confirmed cumulative cases	% of total confirmed cumulative cases	Total cumulative deaths	Transmission classification	Total confirmed cases in last 14 days Antigen RDT test	Total confirmed cases in last 14 days RT-PCR test	Total confirmed cases in last 14 days	% of total confirmed cumulative cases in last 14 days	Total Deaths in last 14 days
Province 1	129541	30322	159863	14.1	1722	Community transmission	0	14	14	25.0	0
Madhesh	53904	1178	55082	4.9	783	Community transmission	0	2	2	3.6	0
Bagmati	542786	32767	575553	50.9	5203	Community transmission	1	31	32	57.1	0
Gandaki	95379	24670	120049	10.6	1428	Community transmission	1	4	5	8.9	0
Lumbini	110492	28140	138632	12.3	1874	Community transmission	0	3	3	5.4	0
Karnali	24020	6325	30345	2.7	492	Community transmission	0	0	0	0.0	0
Sudurpashchim	44954	6142	51096	4.5	518	Community transmission	0	0	0	0.0	0
National Total	1001076	129544*	1130620	100	12020	Community transmission	2	54	56	100	0

**Total reported in Health Emergency Operation Center (HEOC) Sitrep as of 22 January 152219, IMU reported 129544*

Notes:

1. The source for case data used in this update is from RT- PCR test positivity reported by laboratories from various locations across Nepal, as shared by HEOC Sitrep; and IMU/IHIMS.
2. Case data is screened and cleaned by our data team for double entry, wrong entry and manual errors such as cities name in place of districts, district name in place of province etc.
3. Whereas the test positivity rate is calculated based on the test positivity reported in Sitrep for RT-PCR which may or may not be scrutinized or cleaned the same way and mark the cases on location of the laboratories rather than their place of residence.

Figure 4: Distribution of RT-PCR positive COVID-19 cases by age and sex (N= 995839)(Data reported on 22 January 2023 up to 19:00:00)



Overall, the sex-distribution remains skewed towards males. The incidence of cases is higher in the economically productive age group (15-54 years) for both males and females.

Table 2: Age Specific Case Fatality Ratio and Co-morbidity of Deaths in RT-PCR confirmed COVID-19 cases (N= 1001076)(Data reported on 22 January 2023 up to 19:00:00)

Age Group (Years)	Total confirmed cases	Death (male)	Death (female)	Deaths with any known comorbid condition	Age specific case fatality ratio (%)
0-4	9321	16	23	13	0.42
5-14	34181	13	7	10	0.06
15-24	151430	92	96	70	0.12
25-34	277643	387	265	151	0.23
35-44	206346	875	452	281	0.64
45-54	144360	1396	645	574	1.41
55-64	92160	1691	803	783	2.71
65-74	49924	1640	893	957	5.07
75-84	23603	1228	659	773	7.99
85+	6871	524	289	279	11.83
Unknown	5237	19	7	11	0.5
National	1001076	7881	4139	3902	1.20

$$\text{Case Fatality ratio (CFR, in\%)} = \frac{\text{Number of deaths from disease}}{\text{Number of confirmed cases of disease}} \times 100$$

COVID-19 positive lab result is temporally associated with death; causal association under investigation.

A total of 12,020 deaths have been reported. Out of the total deaths, 7,881 (65.6%) were male and 4,139 (34.4%) were female. Amongst the deaths, 3,902 persons (32.5%) had at least one known comorbidity. The age specific case fatality ratio (CFR) progressively increases with age, ranging from 0.06% to 11.8%.

PREPAREDNESS AND RESPONSE

What are the Government of Nepal (GoN) & the Ministry of Health & Population (MoHP) doing?

- Newly appointed Minister for Health and Population Hon. Padam Giri and Hon. State Minister Dr Toshima Karki assumed office on 17 January 2023.
- From 3 November 2022 onwards, the Government of Nepal has started administering second dose COVID-19 booster vaccination for people aged 55 and above and the vulnerable population (immune-deficiency/chronic patients, pregnant women, and health workers) group.

What is the WHO Country Office for Nepal doing?

Laboratory Diagnosis

- WHO Nepal has been providing continuous technical support to the National Public Health Laboratory (NPHL).

Technical Expertise and Training

- Continued routine work from the team of Technical Expertise and Training.²

Operational Support and Logistics

- Continued routine work from the team of Operation Support and Logistics.³

Risk Communication and Community Engagement

- The news of the visit of the Finnish MPs delegation to the HEOC, established under MOHP, with the support of WHO, Country Office for Nepal, was shared via Twitter (link [here](#)). The delegation had an interactive exchange with the Chief of HEOC and appreciated the important role of HEOC to enhance coordination during public health emergencies and disasters.
- The new episode of *Paanch Maa Bigyaan*, on respiratory diseases in children, was shared via SoundCloud (link [here](#)), Facebook (link [here](#)), and Twitter (link [here](#)). A promotional poster was also shared via Facebook (link [here](#)), Twitter (link [here](#)), and Instagram (link [here](#)).
- IEC materials on the following topics were shared via social media:
 - I. 4 things governments should do to protect people from COVID-19,

² The routine works of the technical expertise and training team included technical support to the Ministry of Health and Population and its department for developing different guidelines/manuals, conducting health programs, and conducting capacity building activities. To perform these activities, the team coordinates and discuss with relevant government authorities and partners for effective planning and conducting the various activities.

³ The routine works of the operation support and logistics team included technical support to the Management Division of the Department of Health Services for the forecasting, quantification, procurement, and distribution plan of COVID-19 commodities. The other routine activities included daily operational support to the WHO country office and seven provincial health emergency operation centers, including fleet and travel management and the procurement of required logistics and supplies.

- II. How to stay safe from flu during the winter,
- III. Physical activity and COVID-19,
- IV. Importance of vaccines,
- V. Preventive measures against COVID-19,
- VI. WHO's 75th anniversary.
- The *Weekly COVID-19 EPI Dashboard* was uploaded on *ReliefWeb* (link [here](#)) and WHO, Country Office for Nepal, website (link [here](#)).
- The *Weekly WHO Nepal COVID-19 Situation Update* was uploaded on *ReliefWeb* (link [here](#)) and WHO, Country Office for Nepal, website (link [here](#)).
- The *Focused COVID-19 and Health Media Monitoring* was uploaded on *ReliefWeb* (link [here](#)).
- Episode 87 of *Science in 5 (Is measles making a comeback?)* was translated, dubbed, and published via the following links:
 - I. Nepali: Facebook [link](#); Twitter [link](#); YouTube [link](#); OneDrive [link](#); Instagram [link](#)
 - II. Maithili: Facebook [link](#); YouTube [link](#); OneDrive [link](#)
- Continued support to the Joint Spokesperson, Chief of Health Coordination Division, in coordination with other pillars to prepare content for the weekly media briefing. This week's briefing focused on updates on COVID-19 and measles outbreak in Banke district.

What are the health clusters partners doing?

- Continued routine work from the team of Partner Coordination and Donor Relation⁴
- UNICEF and WHO are providing overall support for COVID-19 vaccination campaign in close coordination with health partners and donors.
- All members of the Health Cluster are supporting the COVID-19 vaccination campaign of Nepal.
- Health partners are continuing their technical, operational, and logistics support for COVID-19 responses to health-related offices and institutions throughout the country.
- COVID-19 consultation is being provided continuously by specialist teams through tele-medicine services.
- Provided technical support during the visit of the delegation of members of Finnish Parliament to the Health Emergency Operation Center (HEOC) at MoHP.

WHO's STRATEGIC OBJECTIVES FOR COVID-19 RESPONSE- [link here](#) **RECOMMENDATION AND ADVICE FOR THE PUBLIC**

- [Protect yourself](#)
- [Questions and answers](#)
- [Travel advice](#)
- [EPI-WIN](#): tailored information for individuals, organizations and communities

⁴ The routine works include coordinating with all the divisions, units, centers of Ministry of Health and Population (MoHP) and Department of Health Services (DoHS), and the health partners for effective conduction of Health Cluster Coordination meeting. Furthermore, the works included the documentation and distribution of meeting minutes, health partner's support updates in the 3Ws (Who, What, Where) and thematic mapping, updates of WHO's support in the UNRCO 3W sheet, participate in multi-sectoral and emergency and disaster preparedness and response platforms and activities and the humanitarian country team operational meetings. Moreover, necessary support for effective coordination of Health Emergency Operation Centre (HEOC) with different stakeholders is provided.

USEFUL LINKS

- MoHP COVID-19 official portal is available [here](#).
- Nepal COVID-19 regular updates and resources are available [here](#)
- For COVID-19 updates from the WHO South-East Asia Region Office, please visit [here](#).
- For information about coronavirus disease (COVID-19) Pandemic from WHO, please visit [here](#)
- Please visit this [site](#) for all technical guidance from WHO.
- Online courses on COVID-19 from WHO can be found [here](#)
- WHO Coronavirus (COVID-19) Dashboard can be found [here](#)
- Visit the WHO Nepal [Facebook page](#) and webpage on COVID-19 [here](#)

CONTACT DETAILS

WHO Representative

Dr. Rajesh Sambhajirao Pandav
WHO Representative to the Government of Nepal
Email: pandavr@who.int

WHO Incident Manager/ Health Cluster Co-lead

Dr. Allison Gocotano
Team Leader - WHO Health Emergencies Program (WHE)
WHO Country Office for Nepal
Email: gocotanoa@who.int

Communication/Media Focal Point

Ms. Tsering Dolkar Gurung
Media, Communication and Public Information Officer
WHO Country Office for Nepal
Email: gurungt@who.int