

# Situation Update #163 - Coronavirus Disease 2019 (COVID-19)

## WHO Country Office for Nepal

Reporting Date: 22 - 28 May 2023 (Epi Week 21)

### HIGHLIGHTS

(Data published in the MoHP Situation Report as of 28 May 2023 and same data published in EDCC Report as of 29 May 2023)

- Of the total RT-PCR confirmed COVID-19 cases, 98.8% of cases have recovered, 0.01% (33) are active cases, and 1.19% (12,031) are deaths.
- Among the new RT-PCR confirmed cases (33) reported this week, 21.2% (7 cases) are from Kathmandu district and 21.2% (7 cases) are from Udaypur district. Majority of the new cases 21.2% (7) have been reported from Kathmandu Valley (Kathmandu, Lalitpur, and Bhaktapur) in Bagmati Province.

### COVID-19 vaccination coverage status (as of 23 May 2023)

Vaccine	First dose	Second dose
Covi-AstraZeneca	5,586,627	4,839,821
Vero Cell	10,408,594	9,277,055
Janssen	3,548,252	
Pfizer	5,025,612	3,873,035
Moderna	3,228,669	2,830,970

### SITUATION OVERVIEW

(Data as of 28 May 2023)

#### NEPAL

##### **Cumulative confirmed cases**

RT-PCR: 1,003,327

Antigen RDT: 154,020

**Cumulative deaths:** 12,031

##### **Cumulative tests**

RT-PCR: 6,044,920

Antigen RDT: 1,596,736

#### SOUTH-EAST ASIA REGION

##### **Cumulative cases (%)**

61,161,195 (8%)

##### **Cumulative deaths (%)**

805,971 (12%)

#### GLOBAL

##### **Cumulative cases (%)**

767,342,575 (100%)

##### **Cumulative deaths (%)**

6,938,207 (100%)

### NEPAL EPIDEMIOLOGICAL SITUATION

- Since 9 May 2021, all 7 provinces in the country are experiencing community transmission.
- Since the start of the COVID-19 pandemic, a total of 78.2% (784,762/1,003,327) of RT-PCR confirmed cases were reported from three provinces, namely - Koshi, Bagmati and Lumbini Provinces. The Kathmandu Valley area (Kathmandu, Bhaktapur, Lalitpur) in Bagmati Province has substantially high case load with 44.2% of the national total (443,057/1,003,327), and 81.4% of the provincial total (443,057/544,296).
- Province-wise, RT-PCR test positivity rate in Epi week 21 ranged from 0.0% (Gandaki Province) to 31.8% (Koshi Province) with a national positivity rate at 1.9%. Madhesh, Lumbini, Karnali and Sudurpaschim Provinces did not report any RT-PCR test performed in the last week.
- Nepal reported a 54% decrease in the number of new RT-PCR confirmed cases (n=33) in Epi week 21 compared to that in the previous week. Of these total cases reported last week, 97% of the cases have been reported from Koshi and Bagmati Provinces.
- Nepal reported no death in Epi week 21, same as in the previous week.

## National Influenza Surveillance

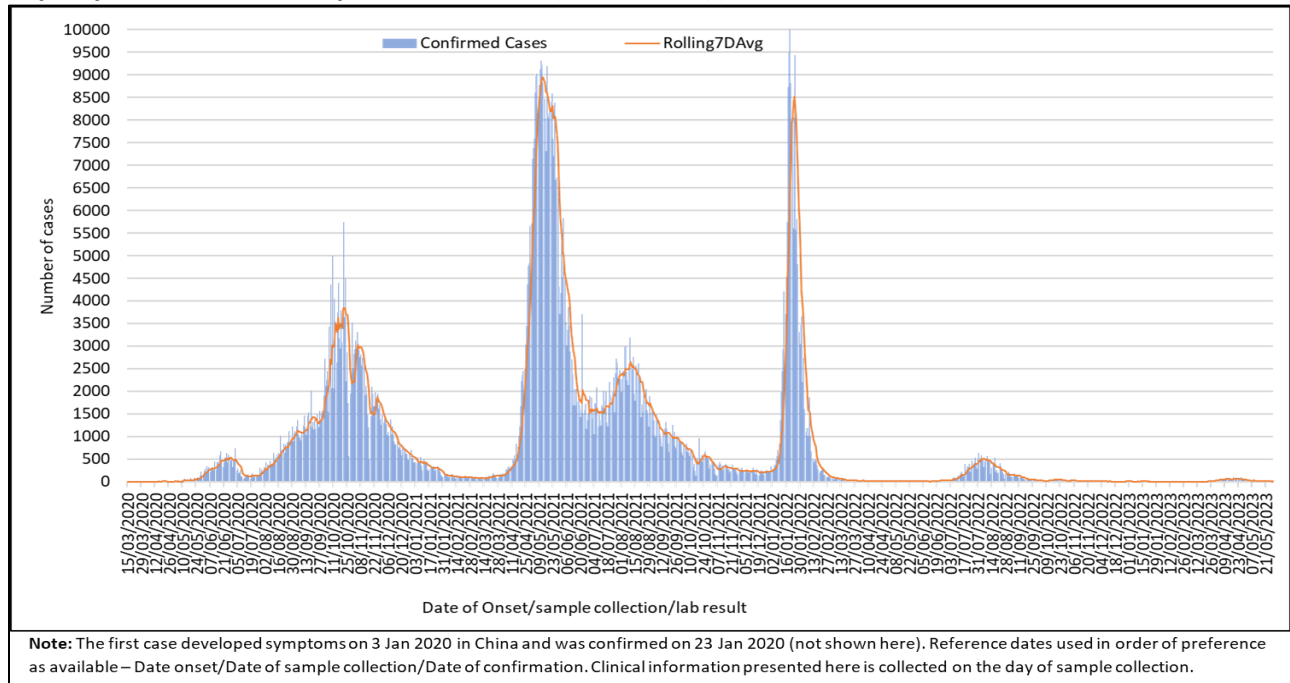
- WHO Nepal supported the National Influenza Center (NIC)-NPHL to report 10 diagnostic Influenza samples on Epi week 21 (22-28 May 2023).
  - One sample tested Influenza B positive and 1 sample tested SARS-CoV-2 positive.
- NIC-NPHL received 12 Influenza samples from sentinel hospitals on Epi week 21.
  - Two samples tested Influenza B positive.
  - Two samples tested SARS-CoV-2 positive.
- Provincial Public Health Laboratories (PPHLs) reported testing of 85 samples for Influenza-SARS-CoV-2 using Multiplex kit on Epi week 21 (22-28 May ,2023). Two samples tested Influenza A positive (to be subtyped) and 1 sample tested Influenza B positive. Three samples tested SARS-CoV-2 positive. A total of 2087 samples have been tested by PPHLs from 2 Jan – 28 May 2023.
- From 2 January 2023 until 28 May 2023:
  - A total of 515 samples tested positive for Influenza [(61 Influenza B (not determined), 58 Influenza B Victoria, 353 Influenza A/H3, 40 Influenza A(H1N1) pdm09 and 3 Influenza A (to be subtyped)] from 4094 samples (sentinel and non-sentinel SARI and ILI samples).
  - Similarly, 194 samples tested positive for SARS-CoV-2 from dual testing of Influenza and SARS-CoV-2 in 3716 SARI and ILI samples received from sentinel and non-sentinel sites.<sup>1</sup>

**WHO SEAR countries: Number of COVID-19 confirmed cases and cumulative incidence rate (per 100,000). Link Here- <https://worldhealthorg.shinyapps.io/covid/>**

---

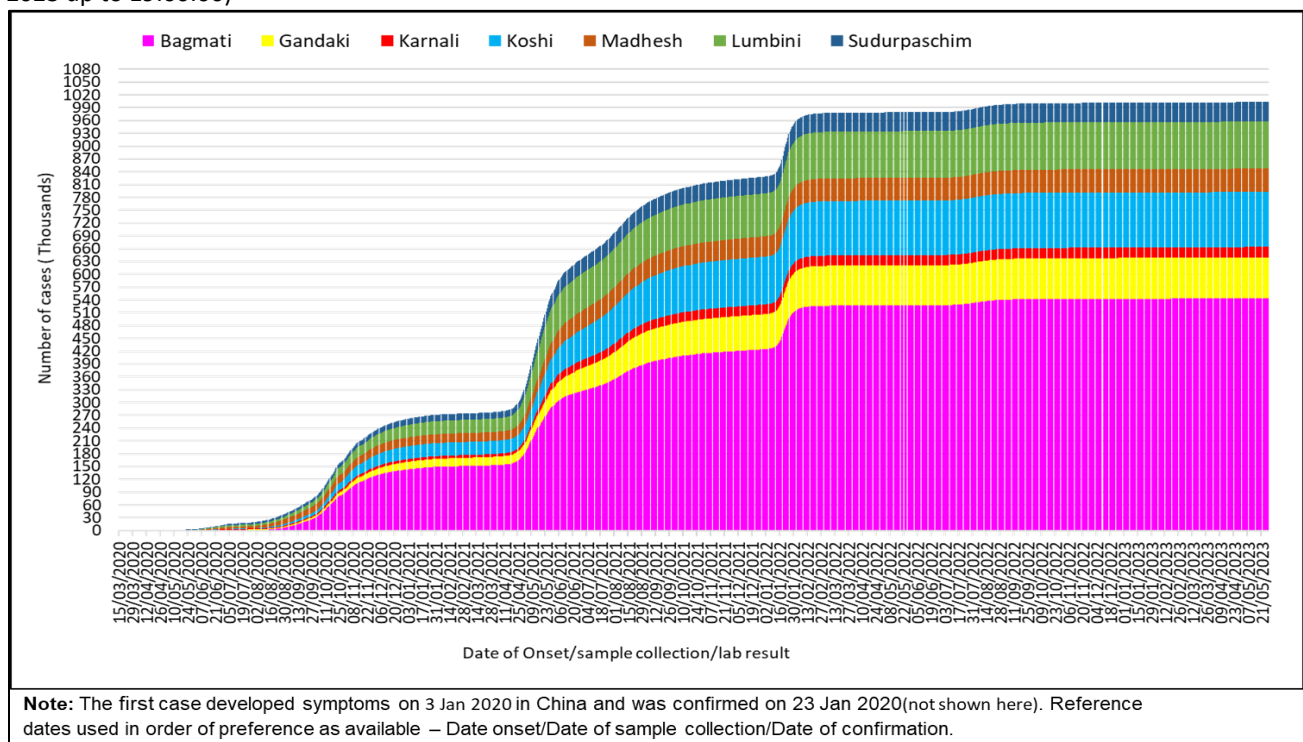
<sup>1</sup> These positive cases are included in the COVID-19 database

**Figure 1: RT-PCR confirmed COVID-19 cases and average number of COVID-19 cases over the last seven days, by date of onset/sample/confirmation (N= 1003327)(Data reported on 28 May 2023 up to 19:00:00)**



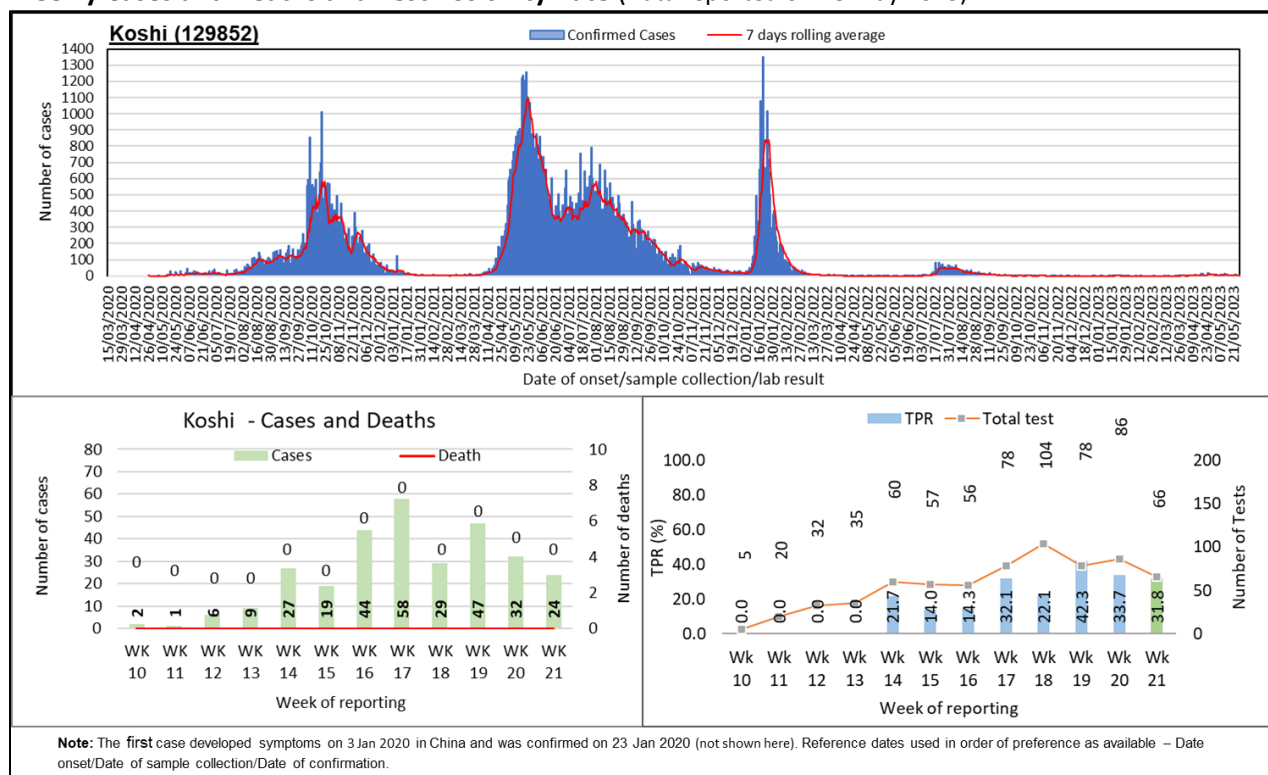
At national level, the first wave of cases between July 2020 and February 2021 was followed by the second wave from the middle of March 2021. Since the middle of December 2021, a third wave of cases soared up exceeding the highest number of single day cases reported in the past surges towards the end of January 2022. Another wave of cases steadily soared up towards the middle of May 2022 following an overall declining trend since the middle of August 2022. Since the middle of March 2023, cases were soaring up, however the trend is continuously decreasing since the end of April 2023.

**Figure 2: Cumulative case count of RT-PCR confirmed COVID-19 (N= 1003327)(Data reported on 28 May 2023 up to 19:00:00)**



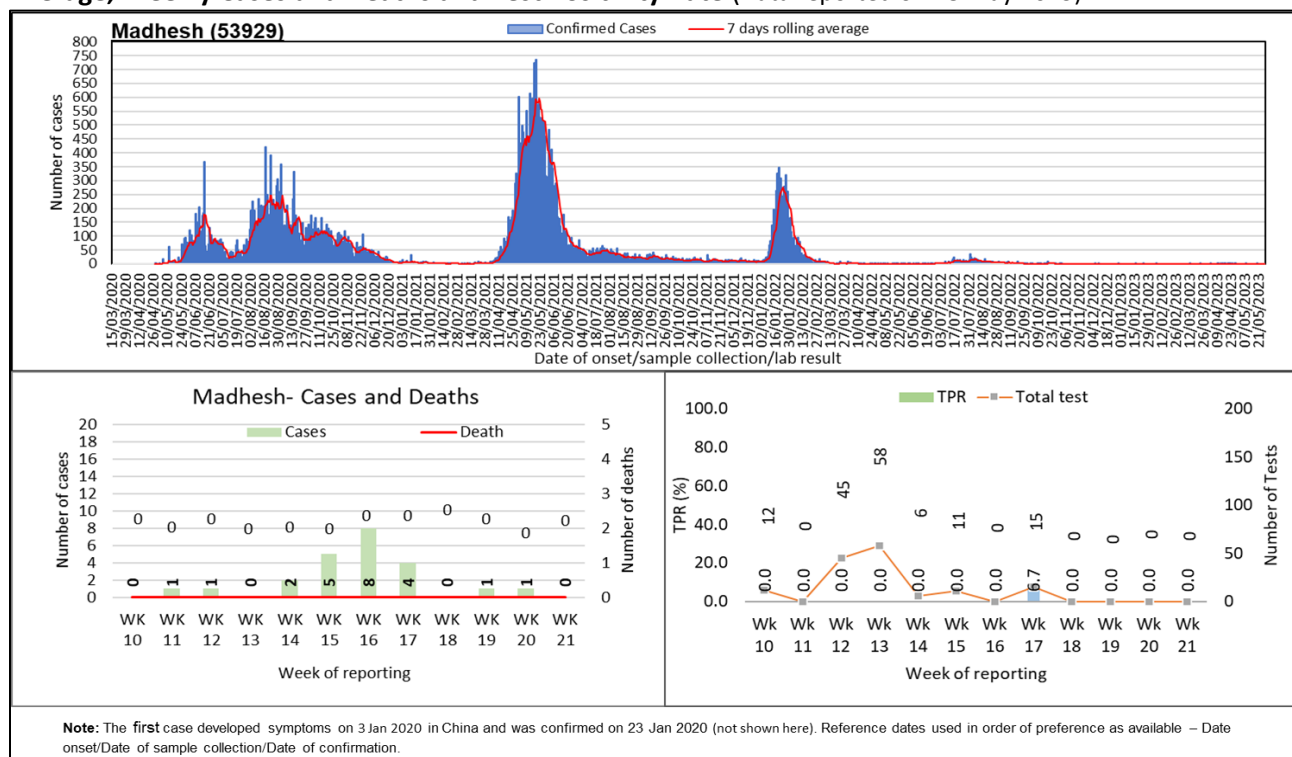
The cumulative case incidence has been increasing in Nepal since the first case confirmed on 23 January 2020. Cases have been largely reported from Bagmati Province followed by Koshi and Lumbini Province.

**Figure 3A1: RT- PCR confirmed COVID-19 cases in Province 1: Trend of Cases, 7 days Rolling Average, Weekly Cases and Deaths and Test Positivity Rate (Data reported on 28 May 2023)**



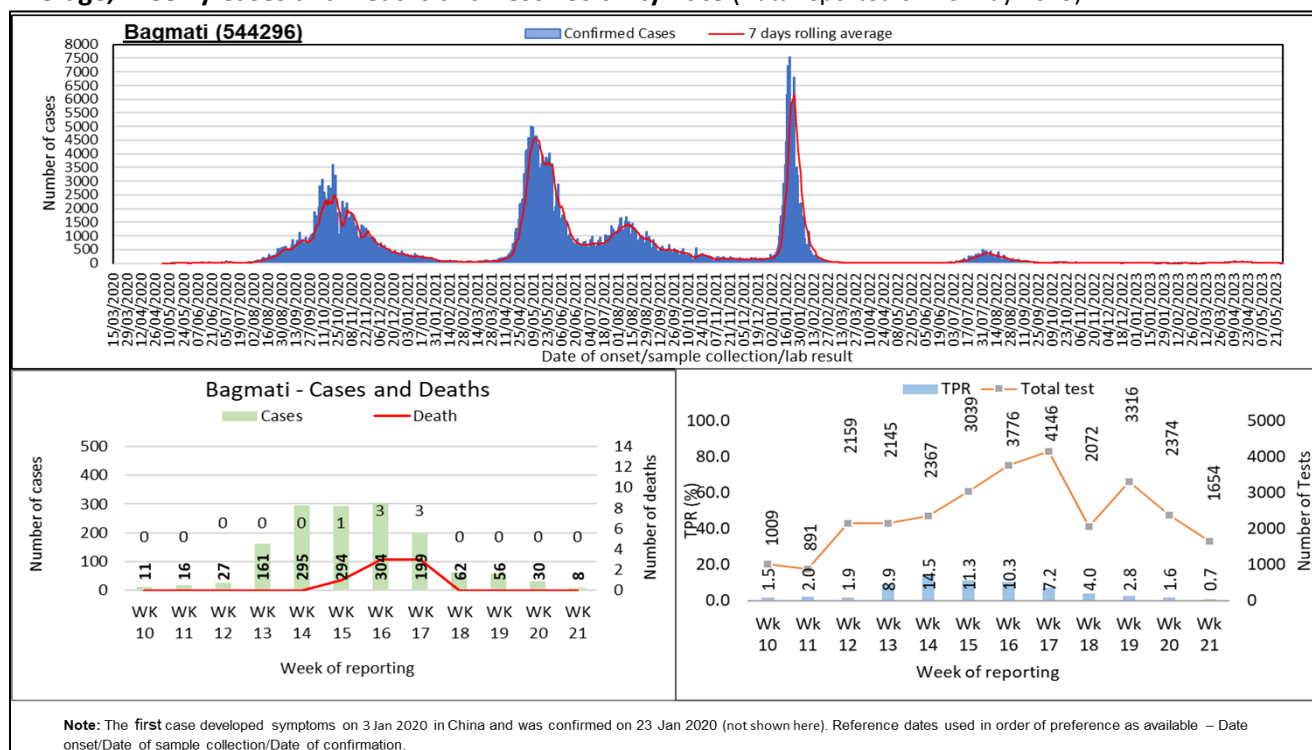
There were 24 new cases reported in the past week in Koshi Province. Cases have decreased by 25% in the past week compared to that in the previous week. There was no death reported in the past week, same as in the previous week. The test positivity rate in Koshi Province decreased to 31.8% in the past week. A total of 66 tests were performed in the past week, 23% less than that in the previous week.

**Figure 3A2: RT- PCR confirmed COVID-19 cases in Madhesh Province: Trend of Cases, 7 days Rolling Average, Weekly Cases and Deaths and Test Positivity Rate (Data reported on 28 May 2023)**



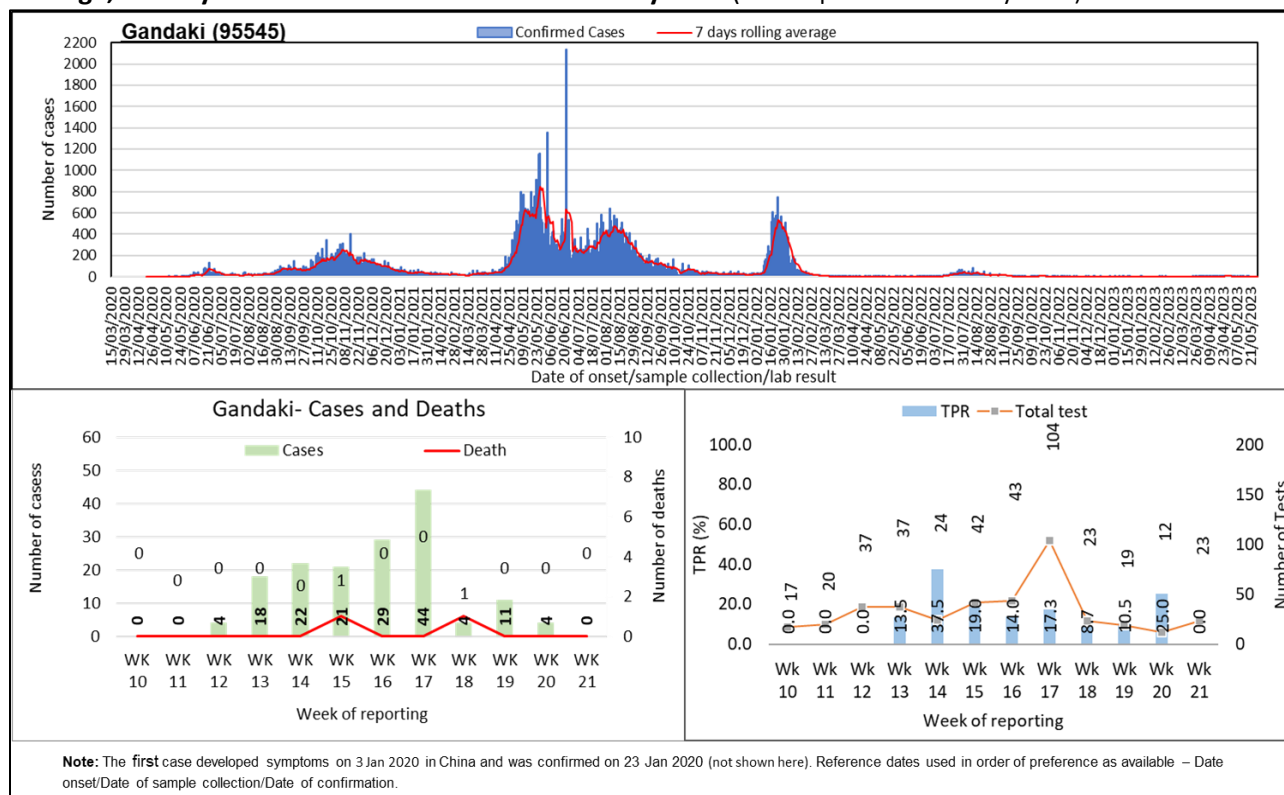
There was no new case reported in the past week in Madhesh Province, 100% less than that in the previous week. There was no death reported in the past week, same as in the previous week. There was no test performed reported in the past week.

**Figure 3A3: RT- PCR confirmed COVID-19 cases in Bagmati Province: Trend of Cases, 7 days Rolling Average, Weekly Cases and Deaths and Test Positivity Rate (Data reported on 28 May 2023)**



In Bagmati Province, 8 new cases were reported in the past week. Cases have decreased by 73% in the past week compared to that in the previous week. There was no death reported in the past week, same as in the previous week. The test positivity rate in Bagmati Province decreased to 0.7% in the past week. A total of 1654 tests were performed in the past week, 30% less than that in the previous week.

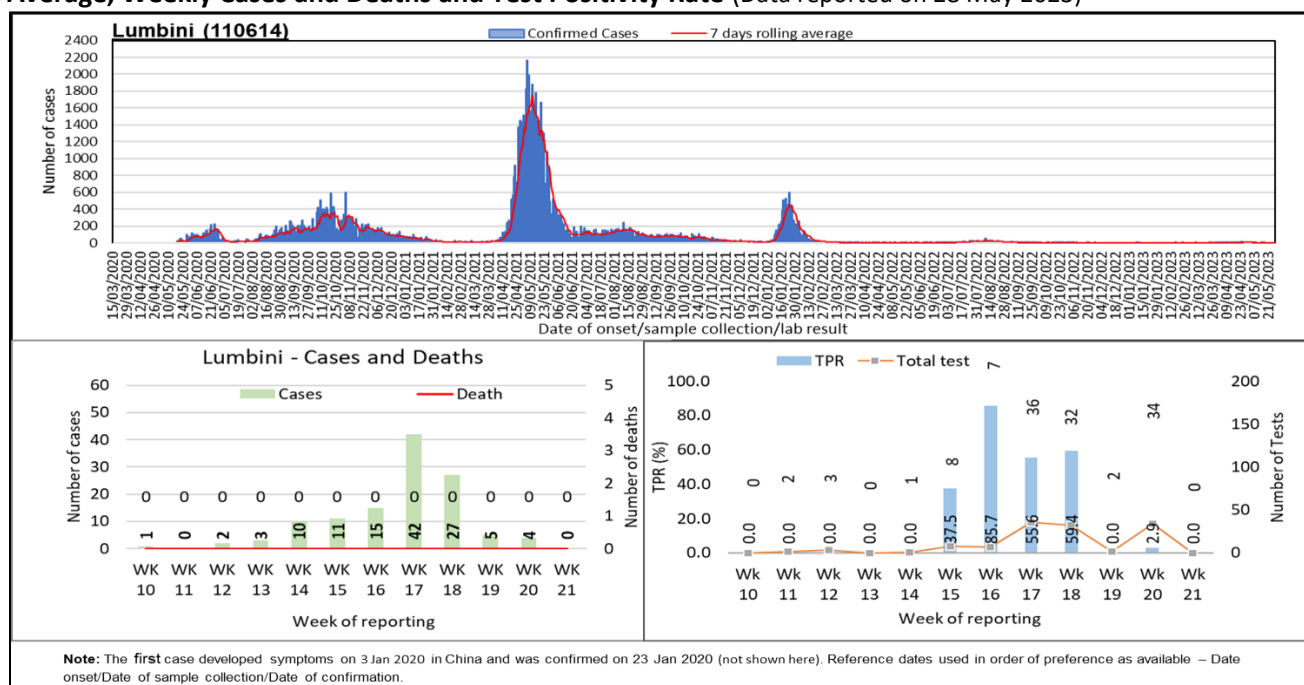
**Figure 3A4: RT- PCR confirmed COVID-19 cases in Gandaki Province: Trend of Cases, 7 days Rolling Average, Weekly Cases and Deaths and Test Positivity Rate (Data reported on 28 May 2023)**



In Gandaki Province, no new case was reported in the past week, 100% less than that in the previous week. There was no death reported in the past week, same as in the previous week. The test positivity rate in Gandaki Province decreased to 0.0% in the past week. A total of 23 tests were performed in the past week, 92% more than that in the previous week.

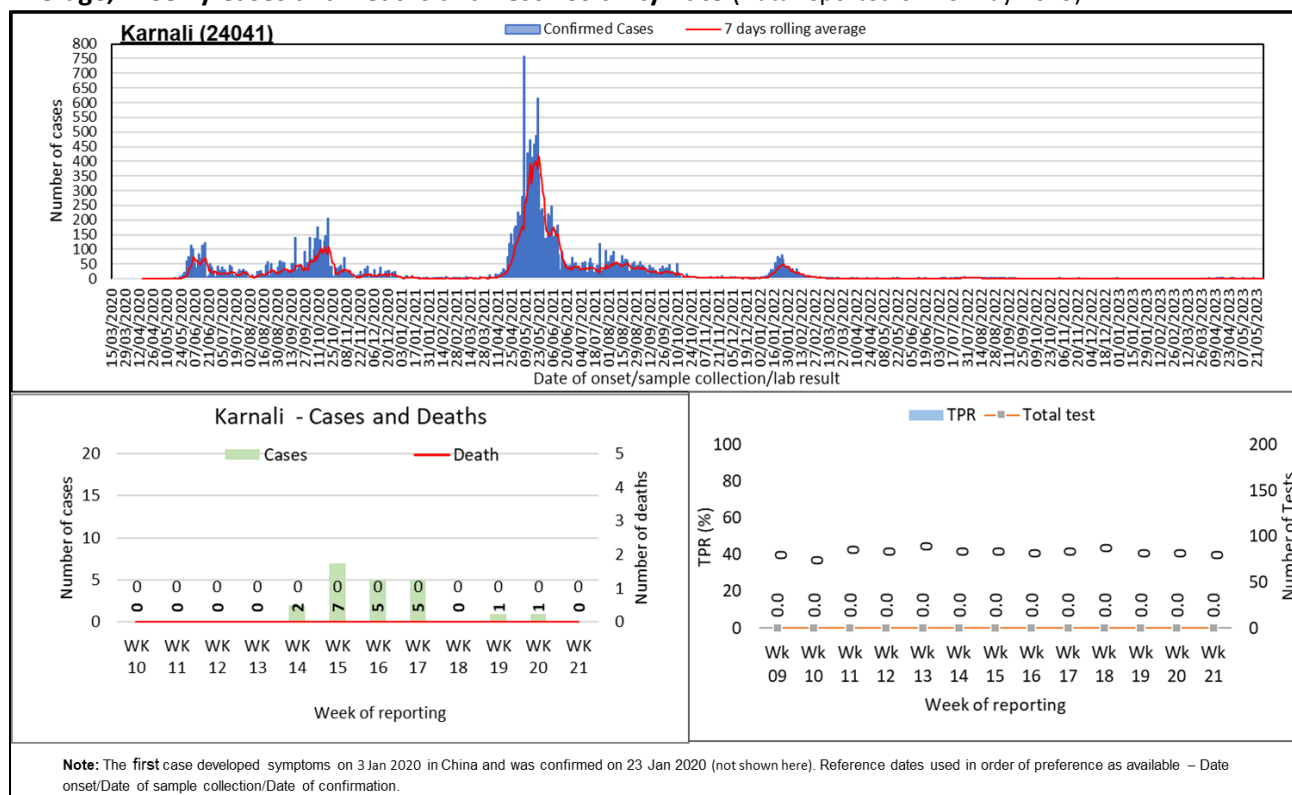


**Figure 3A5: RT- PCR confirmed COVID-19 cases in Lumbini Province: Trend of Cases, 7 days Rolling Average, Weekly Cases and Deaths and Test Positivity Rate (Data reported on 28 May 2023)**



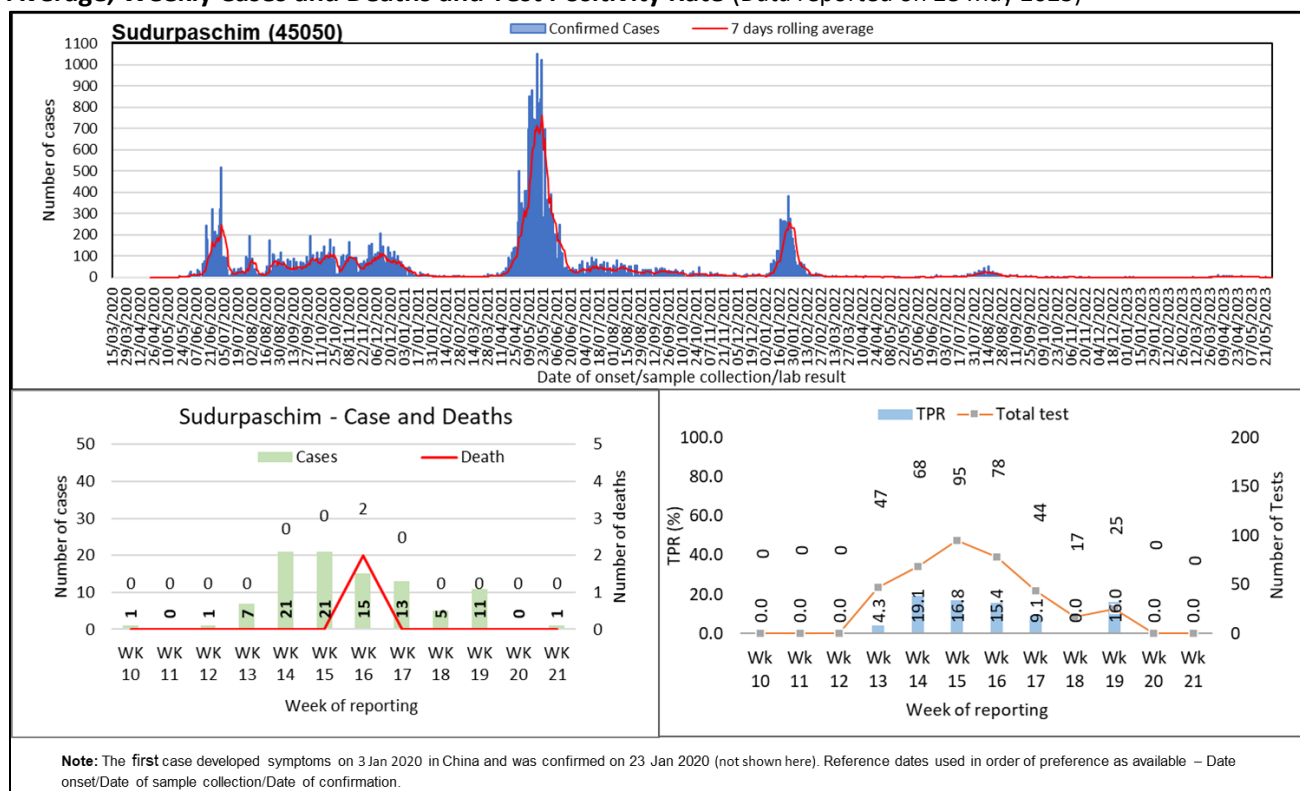
*In Lumbini Province, no new case was reported in the past week, 100% less than that in the previous week. There was no death reported in the past week, same as in the previous week. There was no test performed reported in the past week.*

**Figure 3A6: RT- PCR confirmed COVID-19 cases in Karnali Province: Trend of Cases, 7 days Rolling Average, Weekly Cases and Deaths and Test Positivity Rate (Data reported on 28 May 2023)**



In Karnali Province, no new case was reported in the past week, 100% less than that in the previous week. There was no death reported in the past week, same as in the previous week. There was no test performed reported in the past week.

**Figure 3A7: RT- PCR confirmed COVID-19 cases in Sudurpaschim Province: Trend of Cases, 7 days Rolling Average, Weekly Cases and Deaths and Test Positivity Rate (Data reported on 28 May 2023)**



In Sudurpaschim Province, 1 new case was reported in the past week, compared to none in the previous week. There was no death reported in the past week, same as in the previous week. There was no test performed reported in the past week.



**Table 1: Summary of confirmed COVID-19 cases, deaths, and transmission by Provinces** (Data reported on 28 May 2023 up to 19:00:00)

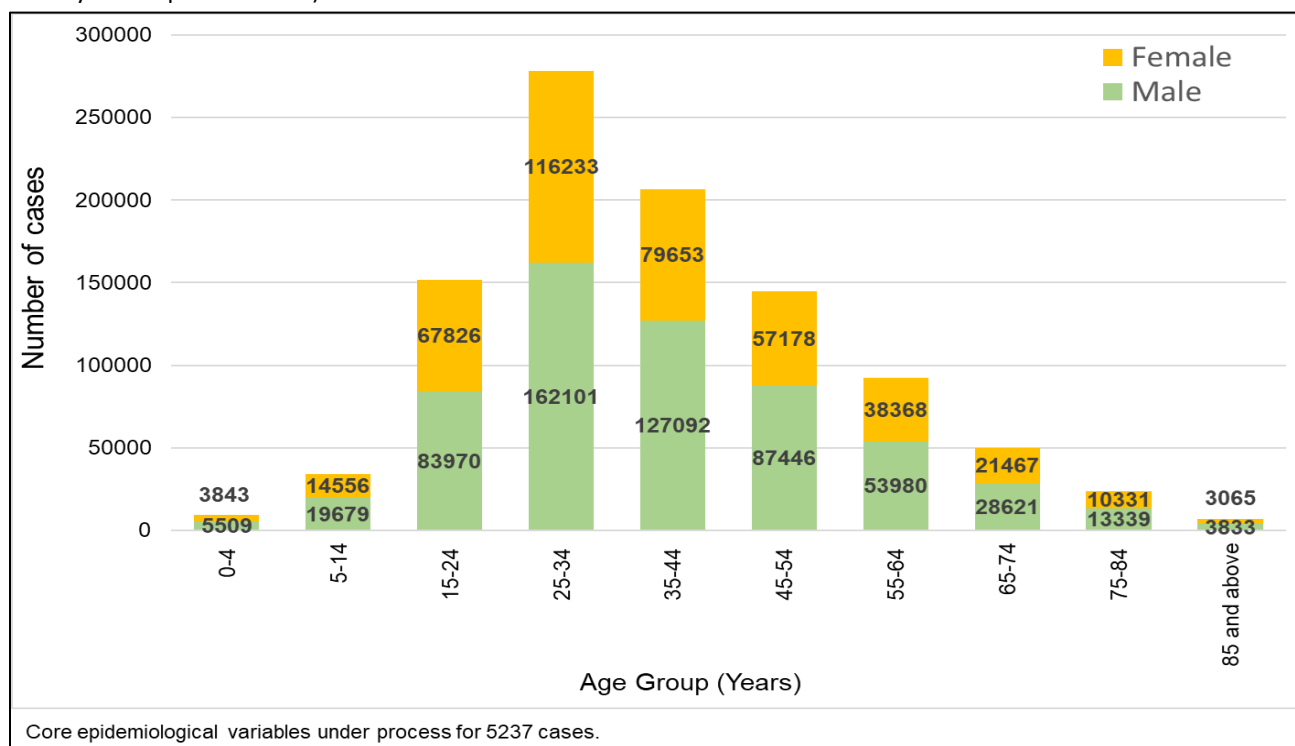
Reporting Province	Total confirmed cumulative cases RTPCR Tests	Total Confirmed cumulative cases Antigen RDT test	Total confirmed cumulative cases	% of total confirmed cumulative cases	Total cumulative deaths	Transmission classification	Total confirmed cases in last 14 days Antigen RDT test	Total confirmed cases in last 14 days RT-PCR test	Total confirmed cases in last 14 days	% of total confirmed cumulative cases in last 14 days	Total Deaths in last 14 days
Koshi	129852	30390	160242	14.1	1722	Community transmission	8	56	64	29.5	0
Madhesh	53929	1187	55116	4.9	783	Community transmission	1	1	2	0.9	0
Bagmati	544296	33404	577700	50.9	5210	Community transmission	33	38	71	32.7	0
Gandaki	95545	24880	120425	10.6	1430	Community transmission	26	4	30	13.8	0
Lumbini	110614	28493	139107	12.3	1874	Community transmission	32	4	36	16.6	0
Karnali	24041	6448	30489	2.7	492	Community transmission	5	1	6	2.8	0
Sudurpashchim	45050	6543	51593	4.5	520	Community transmission	7	1	8	3.7	0
<b>National Total</b>	<b>1003327</b>	<b>131345*</b>	<b>1134672</b>	<b>100</b>	<b>12031</b>	<b>Community transmission</b>	<b>112</b>	<b>105</b>	<b>217</b>	<b>100</b>	<b>0</b>

*\*Total reported in Health Emergency Operation Center (HEOC) Sitrep as of 28 May 154020, IMU reported 131345*

Notes:

1. The source for the case data used in this update is from RT- PCR test positivity reported by laboratories from various locations across Nepal, as shared by HEOC Sitrep; and IMU/IHIMS.
2. Case data is screened and cleaned by our data team for double entry, wrong entries and manual errors such as city names in place of districts, district names in place of province etc.
3. Whereas the test positivity rate is calculated based on the test positivity reported in Sitrep for RT-PCR which may or may not be scrutinized or cleaned the same way and mark the cases on location of the laboratories rather than their place of residence.

**Figure 4: Distribution of RT-PCR positive COVID-19 cases by age and sex (N= 998090)**(Data reported on 28 May 2023 up to 19:00:00)



Overall, the sex-distribution remains skewed towards males. The incidence of cases is higher in the economically productive age group (15-54 years) for both males and females.

**Table 2: Age Specific Case Fatality Ratio and Co-morbidity of Deaths in RT-PCR confirmed COVID-19 cases (N= 1003327)**(Data reported on 28 May 2023 up to 19:00:00)

Age Group (Years)	Total confirmed cases	Death (male)	Death (female)	Deaths with any known comorbid condition	Age specific case fatality ratio (%)
0-4	9352	16	23	13	0.42
5-14	34235	13	7	10	0.06
15-24	151796	92	97	71	0.12
25-34	278334	388	265	152	0.23
35-44	206745	875	452	281	0.64
45-54	144624	1398	646	577	1.41
55-64	92348	1692	803	784	2.7
65-74	50088	1641	894	959	5.06
75-84	23670	1229	660	775	7.98
85+	6898	524	290	280	11.8
Unknown	5237	19	7	11	0.5
<b>National</b>	<b>1003327</b>	<b>7887</b>	<b>4144</b>	<b>3913</b>	<b>1.20</b>

$$\text{Case Fatality ratio (CFR, in\%)} = \frac{\text{Number of deaths from disease}}{\text{Number of confirmed cases of disease}} \times 100$$

COVID-19 positive lab result is temporally associated with death; causal association under investigation.

A total of 12,031 deaths have been reported. Out of the total deaths, 7,887 (65.6%) were male and 4,144 (34.4%) were female. Amongst the deaths, 3,913 persons (32.5%) had at least one known comorbidity. The age specific case fatality ratio (CFR) progressively increases with age, ranging from 0.06% to 11.8%.

## PREPAREDNESS AND RESPONSE

### What are the Government of Nepal (GoN) & the Ministry of Health & Population (MoHP) doing?

- From 3 November 2022 onwards, the Government of Nepal has started administering second dose COVID-19 booster vaccination for people aged 55 years and above and the vulnerable population group (immune-deficiency/chronic patients, pregnant women, and health workers).

### What is the WHO Country Office for Nepal doing?

#### **Laboratory Diagnosis**

- WHO Nepal has been providing support to the NPHL in continued routine work.
- WHO Nepal provided technical support to NPHL in performing genome sequencing of 36 SARS-CoV-2 samples.

#### **Technical Expertise and Training**

- Continued routine work from the team of Technical Expertise and Training.<sup>2</sup>
- WHO Nepal provided technical and financial support for the dissemination of National Infection Prevention and Control (IPC) Guideline and sharing of IPC manual program on 26 May 2023 organized by Nursing and Social Security Division (NSSD). The program was chaired by Dr Dipendra Raman Singh, Director General, Department of Health Services. Provincial Health Director, Health Secretary, Director- Provincial Health Training Center, Hospital and Nursing Director of government and private hospitals along with district hospitals of Bagmati Province participated in the program. Technical experts from WHO, UNICEF and GIZ were also present.



(Left) Dr. Dipendra Raman Singh (Director General, Department of Health Services) giving his welcome speech & thoughts on the dissemination program. (Right) Some glimpses of program. Photo credit: WHO Nepal/S.G.Amatya

<sup>2</sup> The routine works of the technical expertise and training team included technical support to the Ministry of Health and Population and its department for developing different guidelines/manuals, conducting health programs, and conducting capacity building activities. To perform these activities, the team coordinates and discuss with relevant government authorities and partners for effective planning and conducting the various activities.



Group picture of participants with DG and facilitators. Photo credit: WHO Nepal/S.G.Amatya

### **Operational Support and Logistics**

- Continued routine work from the team of Operation Support and Logistics.<sup>3</sup>

### **Risk Communication and Community Engagement**

- The *Weekly COVID-19 EPI Dashboard* was uploaded on ReliefWeb (link [here](#)) and WHO, Country Office for Nepal, website (link [here](#))
- The *Weekly WHO Nepal COVID-19 Situation Update* was uploaded on ReliefWeb (link [here](#)) and WHO, Country Office for Nepal, website (link [here](#)) and
- The *Focused COVID-19 and Health Media Monitoring* was uploaded on ReliefWeb (link [here](#)).

### **What are the health clusters partners doing?**

- Continued routine work from the team of Partner Coordination and Donor Relation<sup>4</sup>
- UNICEF and WHO are providing overall support for COVID-19 vaccination in close coordination with health partners and donors.
- All members of the Health Cluster are supporting the COVID-19 vaccination campaign of Nepal.

<sup>3</sup> The routine works of the operation support and logistics team included technical support to the Management Division of the Department of Health Services for the forecasting, quantification, procurement, and distribution plan of COVID-19 commodities. The other routine activities included daily operational support to the WHO country office and seven provincial health emergency operation centers, including fleet and travel management and the procurement of required logistics and supplies.

<sup>4</sup> The routine works include coordinating with all the divisions, units, centers of Ministry of Health and Population (MoHP) and Department of Health Services (DoHS), and the health partners for effective conduction of Health Cluster Coordination meeting. Furthermore, the works included the documentation and distribution of meeting minutes, health partner's support updates in the 3Ws (Who, What, Where) and thematic mapping, updates of WHO's support in the UNRCO 3W sheet, participate in multi-sectoral and emergency and disaster preparedness and response platforms and activities and the humanitarian country team operational meetings. Moreover, necessary support for effective coordination of Health Emergency Operation Centre (HEOC) with different stakeholders is provided.

- Health partners are continuing their technical, operational, and logistics support for COVID-19 responses to health-related offices and institutions throughout the country.
- COVID-19 consultation is being provided continuously by specialist teams through tele-medicine services.

## **WHO's STRATEGIC OBJECTIVES FOR COVID-19 RESPONSE- [link here](#)** **RECOMMENDATION AND ADVICE FOR THE PUBLIC**

- [Protect yourself](#)
- [Questions and answers](#)
- [Travel advice](#)
- [EPI-WIN](#): tailored information for individuals, organizations and communities

## **USEFUL LINKS**

- MoHP COVID-19 official portal is available [here](#).
- Nepal COVID-19 regular updates and resources are available [here](#)
- For COVID-19 updates from the WHO South-East Asia Region Office, please visit [here](#).
- For information about coronavirus disease (COVID-19) Pandemic from WHO, please visit [here](#)
- Please visit this [site](#) for all technical guidance from WHO.
- Online courses on COVID-19 from WHO can be found [here](#)
- WHO Coronavirus (COVID-19) Dashboard can be found [here](#)
- Visit the WHO Nepal [Facebook page](#) and webpage on COVID-19 [here](#)

## **CONTACT DETAILS**

### **WHO Representative**

Dr. Rajesh Sambhajirao Pandav  
WHO Representative to the Government of Nepal  
Email: [pandavr@who.int](mailto:pandavr@who.int)

### **WHO Incident Manager/ Health Cluster Co-lead**

Dr. Allison Gocotano  
Team Leader - WHO Health Emergencies Program (WHE)  
WHO Country Office for Nepal  
Email: [gocotanoa@who.int](mailto:gocotanoa@who.int)

### **Communication/Media Focal Point**

Ms. Tsering Dolkar Gurung  
Media, Communication and Public Information Officer  
WHO Country Office for Nepal  
Email: [gurungt@who.int](mailto:gurungt@who.int)