

Situation Update #137 - Coronavirus Disease 2019 (COVID-19)

WHO Country Office for Nepal

Reporting Date: 21 - 27 November 2022 (EPI Week 47)

HIGHLIGHTS

(Data published in the MoHP Situation Report as of 27 November 2022 and same data published in EDCC Report as of 28 November 2022)

- Of the total RT-PCR confirmed COVID-19 cases, 98.8% (988,596) of cases have recovered, 0.02% (263) are active cases and 1.2% (12,019) are deaths.
- Among the new RT-PCR confirmed cases (27) reported this week, 51.9% (14) are from Kathmandu district followed by Kavrepalanchowk and Kailali districts 7.4% (2). Majority of the new cases 59.3% (16) have been reported from Kathmandu Valley (Kathmandu, Lalitpur and Bhaktapur), Bagmati Province.

SITUATION OVERVIEW

(Data as of 27 November 2022)

NEPAL

Cumulative confirmed cases

RT-PCR: 1,000,878

Antigen RDT: 152,206

Cumulative deaths: 12,019

Cumulative tests

RT-PCR: 5,976,461

Antigen RDT: 1,456,728

SOUTH-EAST ASIA REGION

Cumulative cases (%)

60,642,718 (10%)

Cumulative deaths (%)

801,676 (12%)

GLOBAL

Cumulative cases (%)

637,737,550 (100%)

Cumulative deaths (%)

6,611,874 (100%)

COVID-19 vaccination coverage status (as of 23 November 2022)

Covi-AstraZeneca		Vero Cell		Janssen		Pfizer		Moderna	
First dose	5,560,843	First dose	10,381,962	Single dose	3,527,467	First dose	4,663,427	First dose	3,227,412
Second dose	4,815,123	Second dose	9,255,106			Second dose	3,356,559	Second dose	2,826,291

NEPAL EPIDEMIOLOGICAL SITUATION

- Since 9 May 2021, all 7 provinces in the country are experiencing community transmission.
- Since the start of the COVID-19 pandemic, a total of 78.2% (782,647/1,000,878) of RT-PCR confirmed cases were reported from three provinces, namely- Province 1, Bagmati Province and Lumbini Province. The Kathmandu valley area (Kathmandu, Bhaktapur, Lalitpur) in Bagmati Province has substantially high case load with 44.1% of national total (441,581/1,000,878), and 81.4% of the provincial total (441,581/542,650).
- Province-wise RT-PCR test positivity rate in Epi Week 47 ranged from 0.0% (Province 1 and Lumbini province) to 100% (Sudurpashchim province), with a national positivity rate at 0.7%. Madhesh and Karnali province did not report any RT-PCR test performed in the last week.
- Nepal reported a 40% decrease in the number of new RT-PCR confirmed cases (n=27) in Epi week 47 compared to that in the previous week. Of these total cases reported last week, 81% of the cases have been reported from Province 1, Bagmati, and Lumbini province.
- Nepal did not report any death in Epi week 47, same as in the previous week.

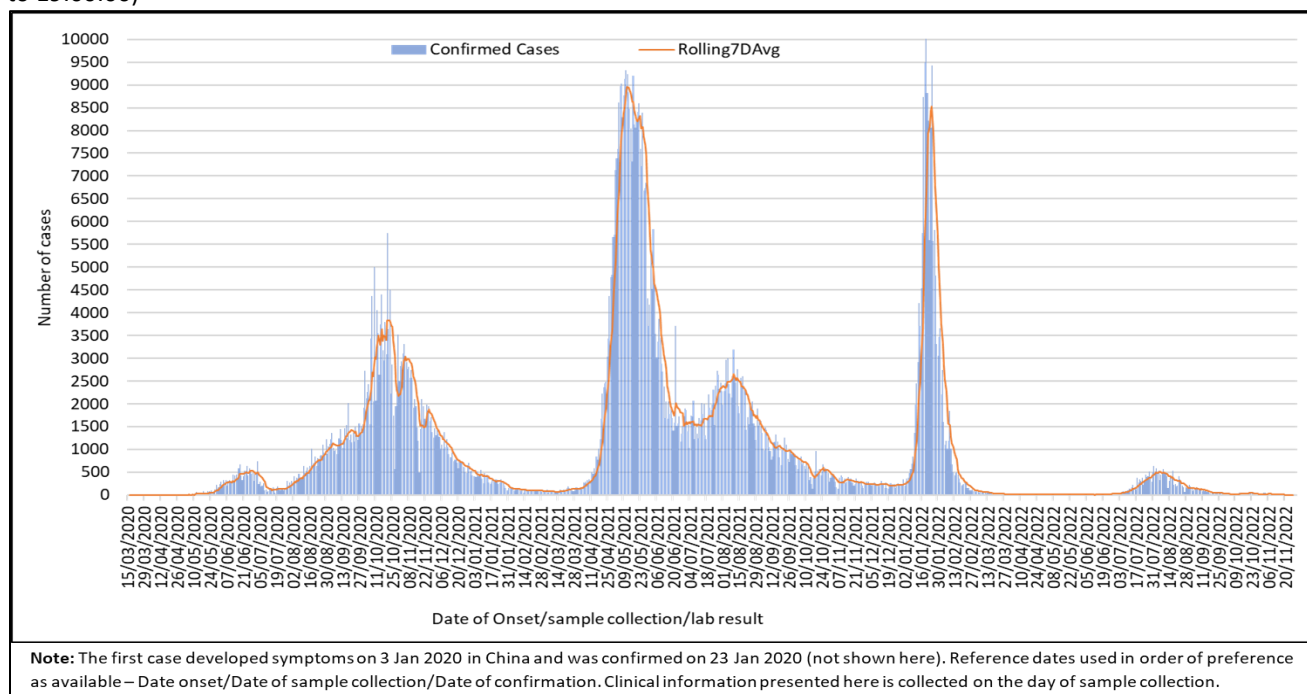
National Influenza Surveillance

- National Influenza Center (NIC)-NPHL reported 7 diagnostic Influenza samples on Epi-week 47. None of the samples tested positive for Influenza A and B and SARS-CoV-2.
- NIC-NPHL received 44 samples from its sentinel sites i.e Kanti Children's Hospital (3 samples), Sukraraj Tropical and Infectious Disease Hospital (15 samples), Bheri Hospital (21 samples) and Mechi Hospital (5 samples) for Influenza-SARS-CoV-2 testing.
 - All the samples tested negative for Influenza A and B.
 - One sample tested positive for SARS-CoV-2.
- Out of the total SARS-CoV-2 samples that tested negative at NPHL on EPID-week 47 (21-27 Nov 2022), 15 SARS-CoV-2 negative samples were tested for Influenza. All samples tested negative for Influenza A and B.
- Provincial Public Health Laboratory (PPHL) from Madhesh, Gandaki, Lumbini and Karnali Provinces reported testing of 62 samples for Influenza-SARS-CoV-2 using Multiplex kit on EPID-week 47.
 - None of the samples tested positive for Influenza A and B and SARS-CoV-2.
 - A total of 1724 samples have been tested by PPHLs till 27 November 2022.
- From 3 January 2022 until 27 November 2022:
 - A total of 670 samples tested positive for Influenza (5 Influenza B, 317 Influenza A/H3, 342 Influenza A(H1N1pdm09), and 6 Influenza A (subtyping to be done) from 7,264 samples (sentinel and non-sentinel samples including SARS-CoV-2 Negative SARI and ILI cases).
 - Similarly, 362 samples tested positive for SARS-CoV-2 from 2,995 Influenza negative samples (sentinel/non-sentinel ILI/SARI samples).¹

WHO SEAR countries: Number of COVID-19 confirmed cases and cumulative incidence rate (per 100,000). Link Here- <https://worldhealthorg.shinyapps.io/covid/>

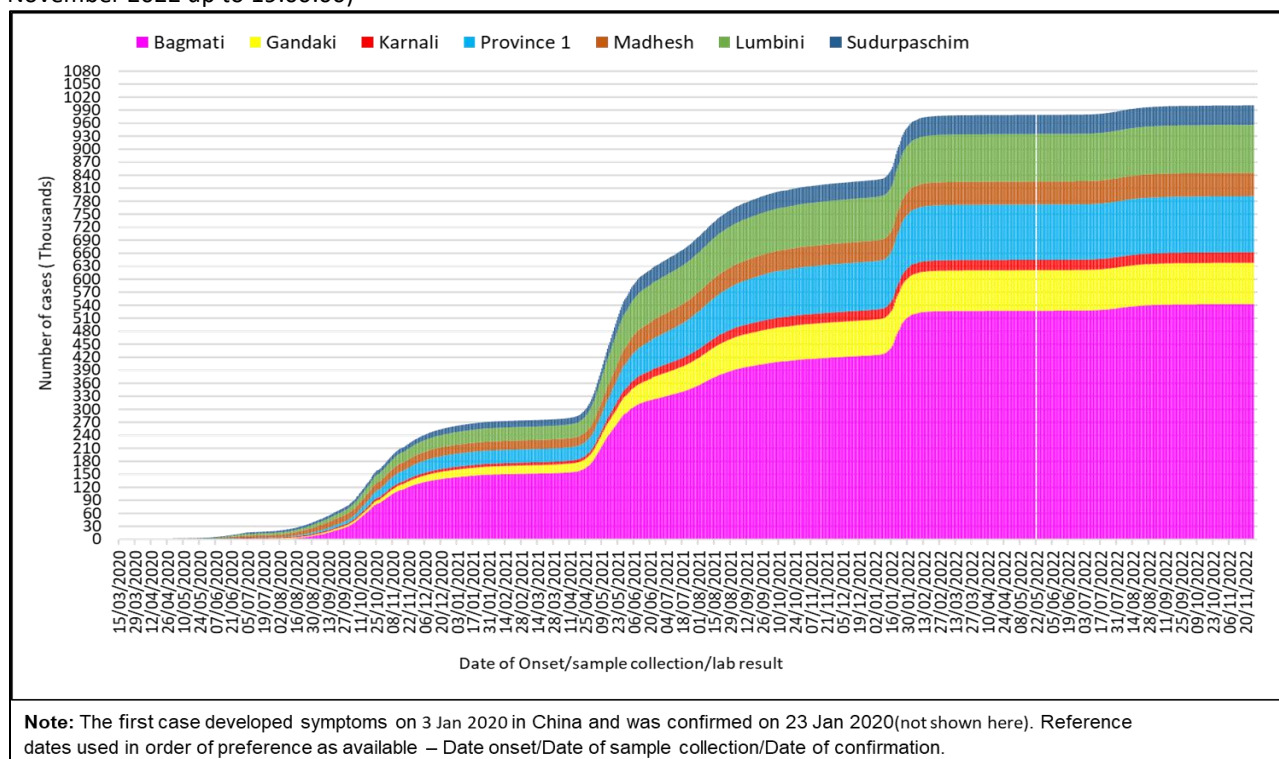
¹ These positive cases are included in the COVID-19 database

Figure 1: RT-PCR confirmed COVID-19 cases and average number of COVID-19 cases over the last seven days, by date of onset/sample/confirmation (N= 1000878)(Data reported on 27 November 2022 up to 19:00:00)



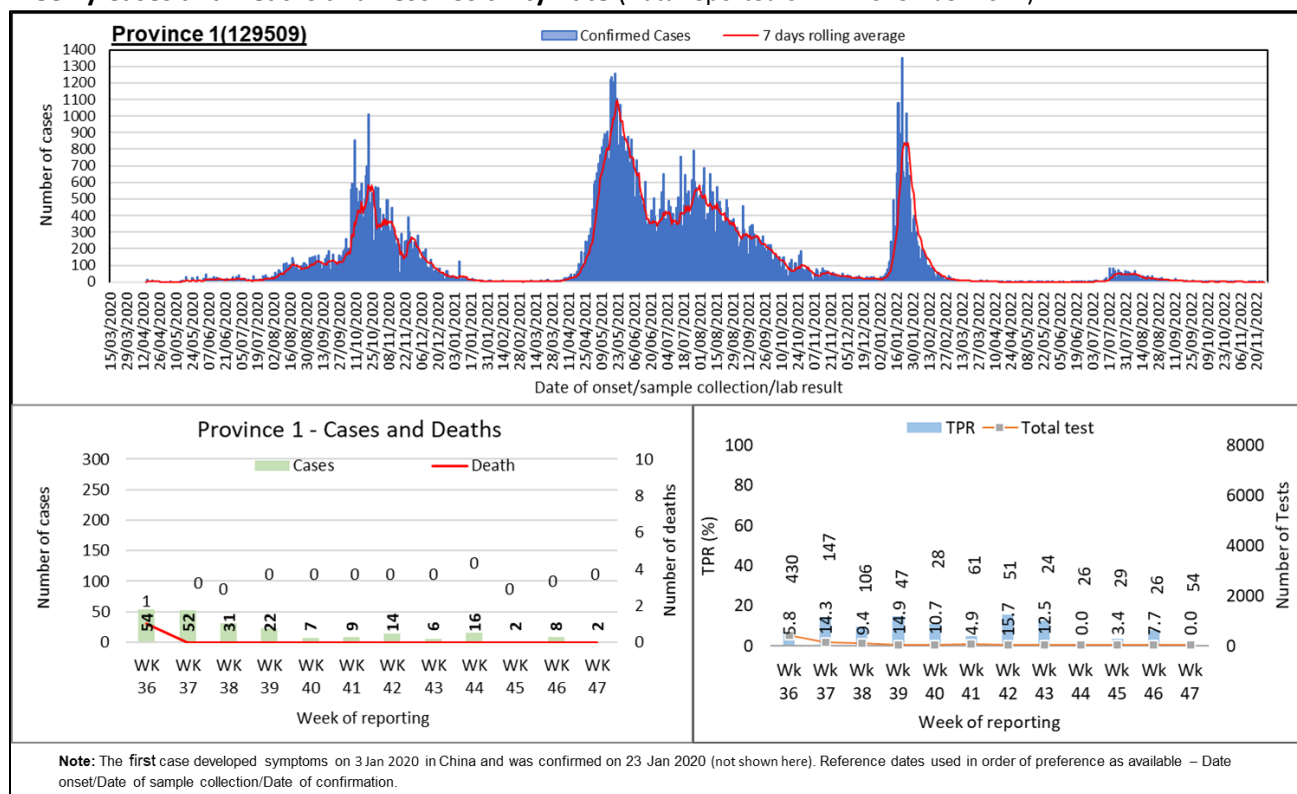
At national level, the first wave of cases between July 2020 and February 2021 was followed by the second wave from the middle of March 2021. Since the middle of December 2021, a third wave of cases soared up exceeding the highest number of single day cases reported in the past surges towards the end of January 2022. Since the middle of May 2022, cases were steadily rising in an increasing trend, however the trend is overall in a decline now.

Figure 2: Cumulative case count of RT-PCR confirmed COVID-19 cases (N= 1000878)(Data reported on 27 November 2022 up to 19:00:00)



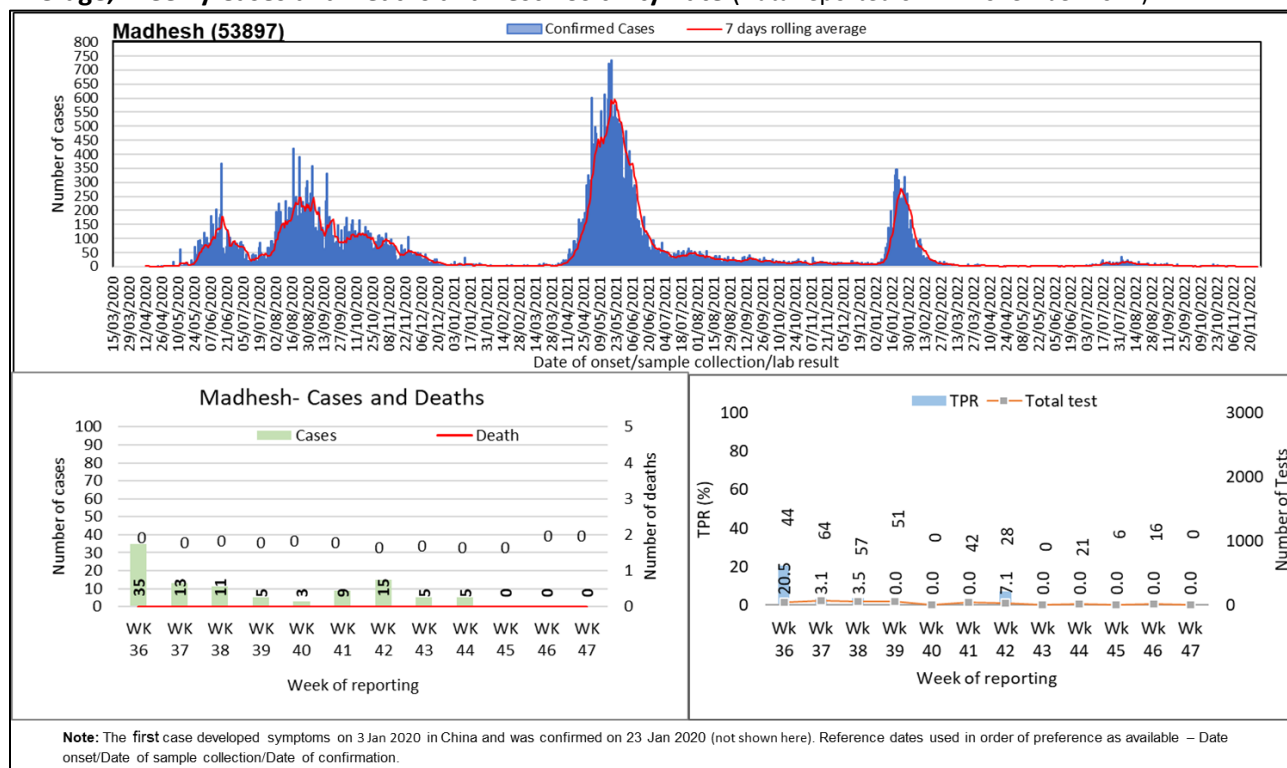
The cumulative case incidence has been increasing in Nepal since the first case confirmed on 23 January 2020. Cases have been largely reported from Bagmati Province followed by Province 1 and Lumbini Province.

Figure 3A1: RT- PCR confirmed COVID-19 cases in Province 1: Trend of Cases, 7 days Rolling Average, Weekly Cases and Deaths and Test Positivity Rate (Data reported on 27 November 2022)



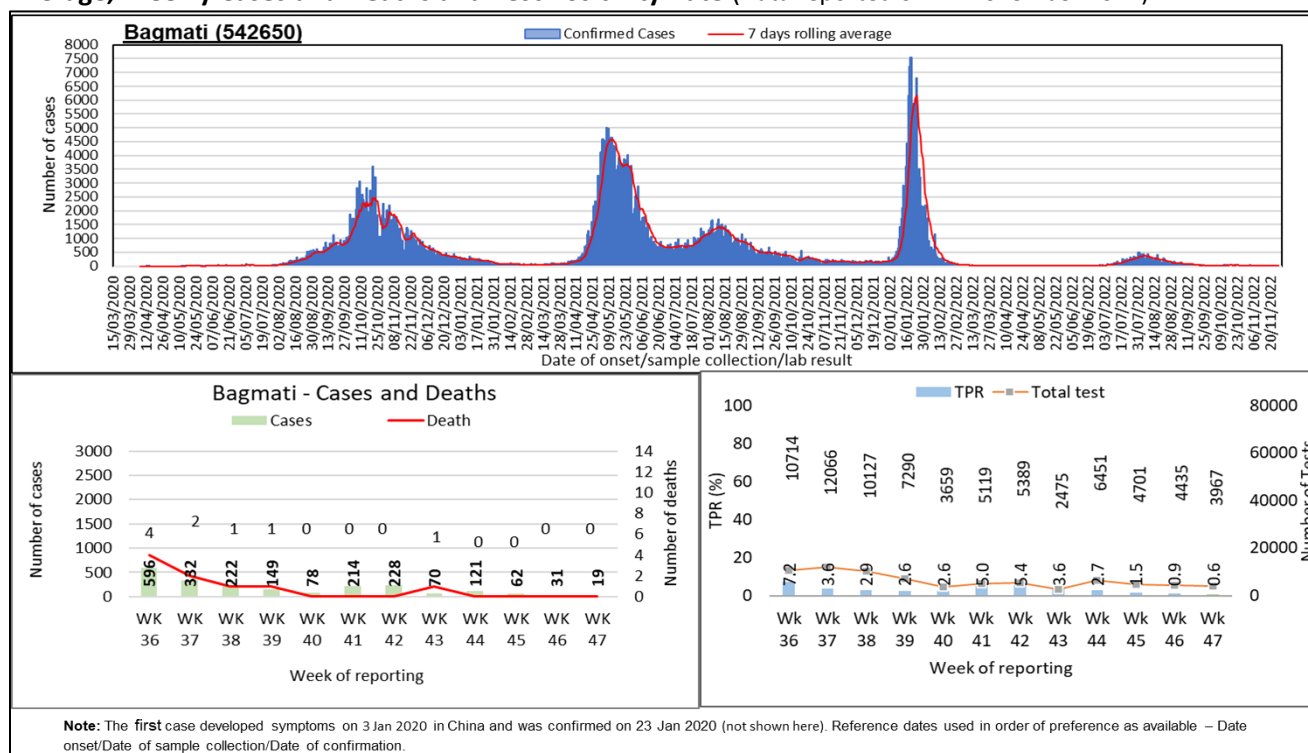
There were 2 new cases reported in the past week in Province 1. Cases have decreased by 75% in the past week compared to the previous week. There was no death reported in the past week, same as in the previous week. The test positivity rate in Province 1 decreased to 0.0% in the past week. A total of 54 tests were performed in the past week, 108% more than that in the previous week.

Figure 3A2: RT- PCR confirmed COVID-19 cases in Madhesh Province: Trend of Cases, 7 days Rolling Average, Weekly Cases and Deaths and Test Positivity Rate (Data reported on 27 November 2022)



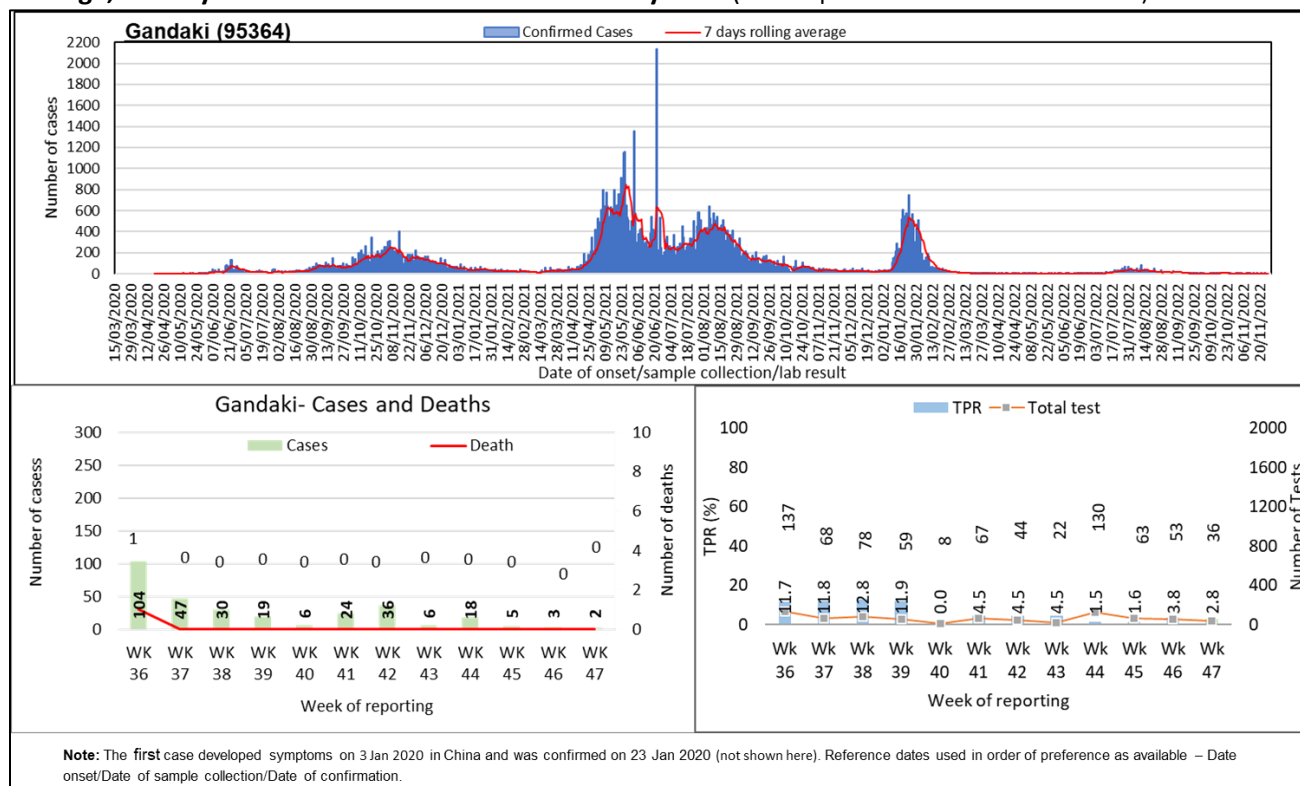
There was no new case reported in the past week in Madhesh province, same as in the previous week. There was no death reported in the past week, same as in the previous week. There was no test performed reported in the past week.

Figure 3A3: RT- PCR confirmed COVID-19 cases in Bagmati Province: Trend of Cases, 7 days Rolling Average, Weekly Cases and Deaths and Test Positivity Rate (Data reported on 27 November 2022)



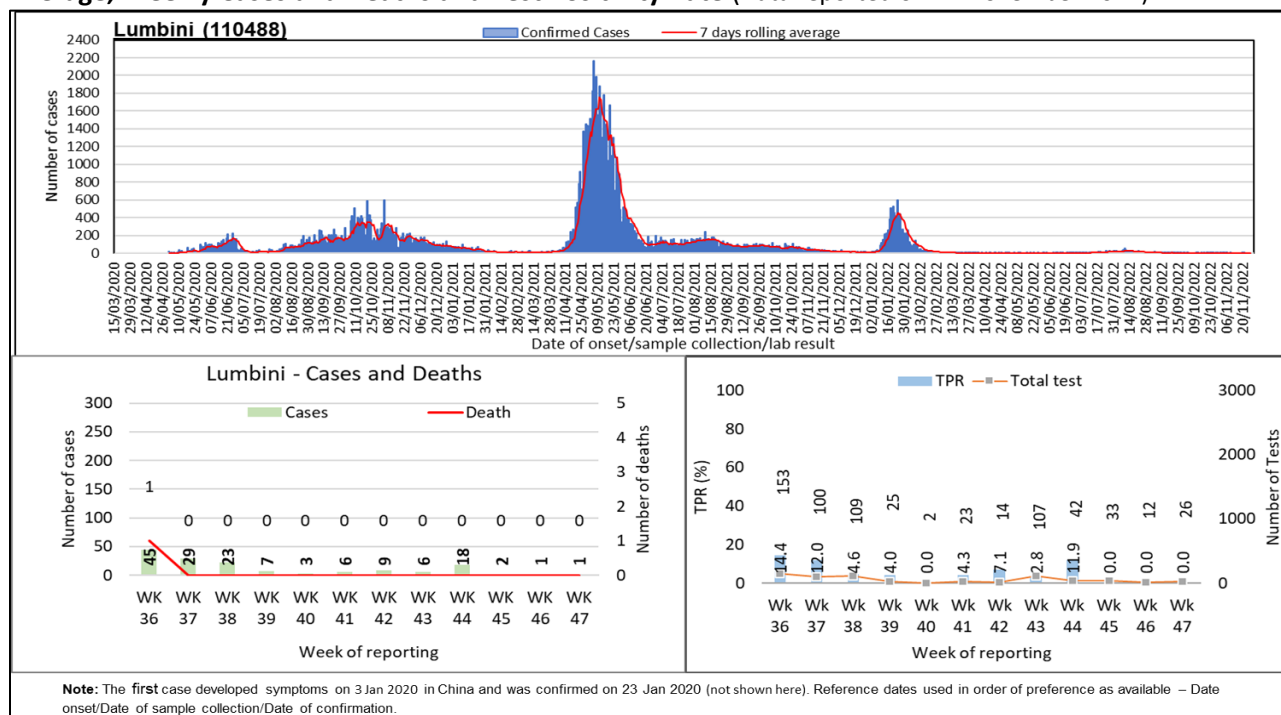
In Bagmati, 19 new cases were reported in the past week. Cases have decreased by 39% in the past week compared to previous week. There was no death reported in the past week, same as in the previous week. The test positivity rate in Bagmati decreased to 0.6% in the past week. A total of 3967 tests were performed in the past week, 6% less than that in the previous week.

Figure 3A4: RT- PCR confirmed COVID-19 cases in Gandaki Province: Trend of Cases, 7 days Rolling Average, Weekly Cases and Deaths and Test Positivity Rate (Data reported on 27 November 2022)



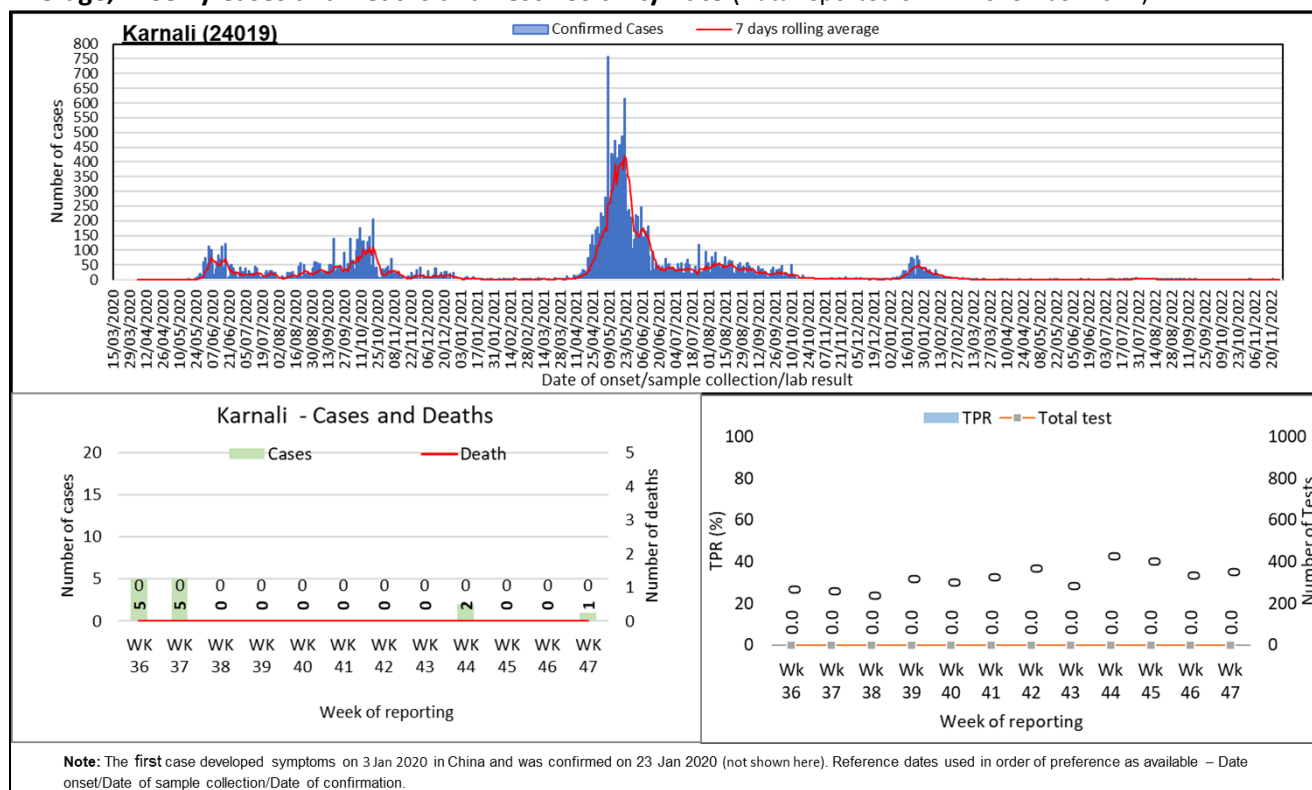
In Gandaki, 2 new cases were reported in the past week. Cases have decreased by 33% in the past week compared to previous week. There was no death reported in the past week, same as in the previous week. The test positivity rate in Gandaki decreased to 2.8% in the past week. A total of 36 tests were performed in the past week, 32% less than that in the previous week.

Figure 3A5: RT- PCR confirmed COVID-19 cases in Lumbini Province: Trend of Cases, 7 days Rolling Average, Weekly Cases and Deaths and Test Positivity Rate (Data reported on 27 November 2022)



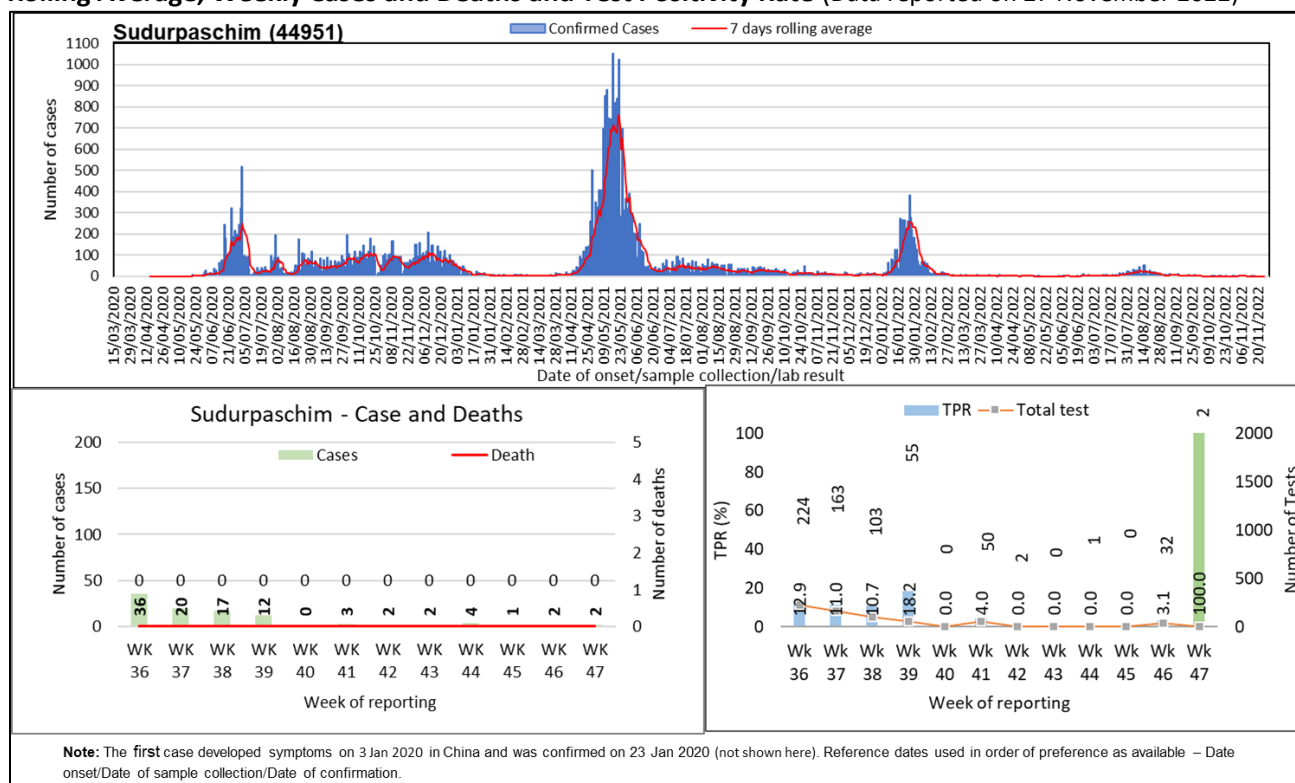
Lumbini reported 1 new case in the past week, same as in the previous week. There was no death reported in the past week, same as in the previous week. The test positivity rate in Lumbini retained at 0.0% in the past week. A total of 26 tests were performed in the past week, 117% more than that in the previous week.

Figure 3A6: RT- PCR confirmed COVID-19 cases in Karnali Province: Trend of Cases, 7 days Rolling Average, Weekly Cases and Deaths and Test Positivity Rate (Data reported on 27 November 2022)



In Karnali, 1 new case was reported in the past week, increase compared to none in the previous week. There was no death reported in the past week, same as in the previous week. There was no test performed reported in the past week.

Figure 3A7: RT- PCR confirmed COVID-19 cases in Sudurpashchim Province: Trend of Cases, 7 days Rolling Average, Weekly Cases and Deaths and Test Positivity Rate (Data reported on 27 November 2022)



In Sudurpaschim, 2 new cases were reported in the past week same as in the previous week. There was no death reported in the past week, same as in the previous week. The test positivity rate in Sudurpaschim was 3.1% in the past week. A total of 2 tests were performed in the past week, 94% less than that reported in the previous week.

Table 1: Summary of confirmed COVID-19 cases, deaths and transmission by provinces (Data reported on 27 November 2022 up to 19:00:00))

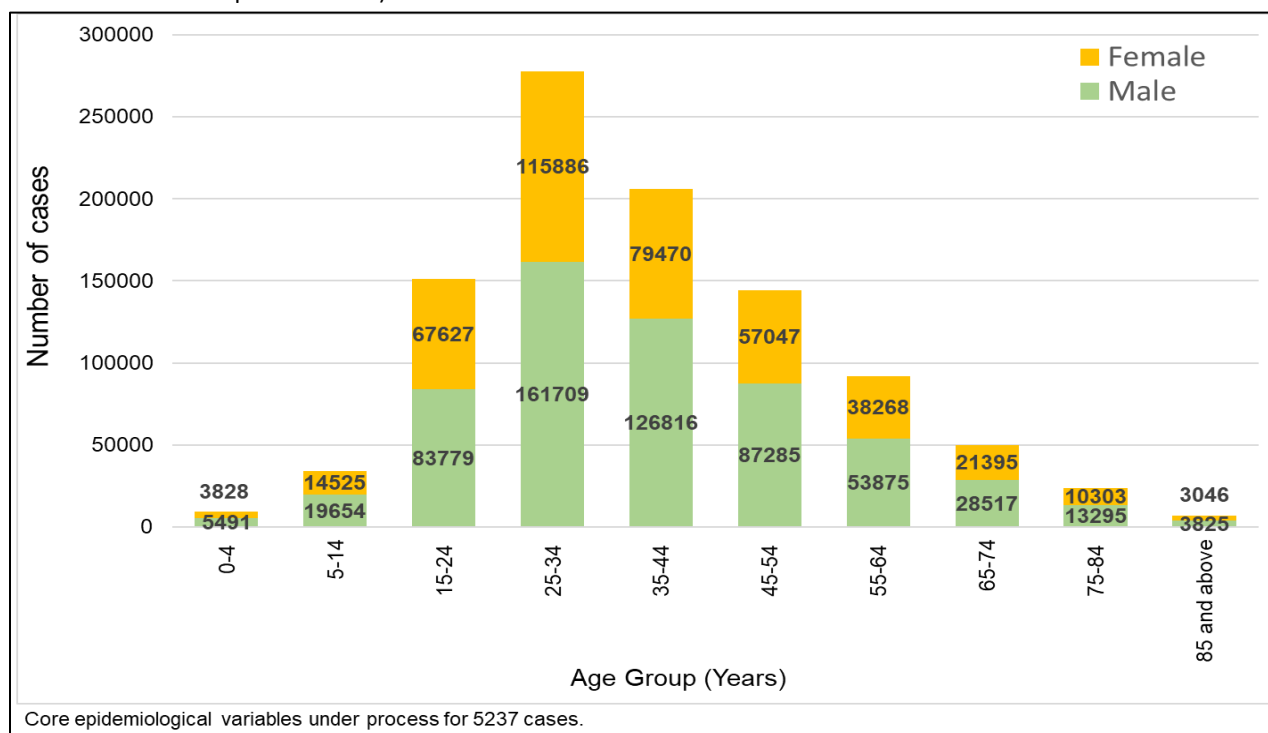
Reporting Province	Total confirmed cumulative cases RT-PCR Tests	Total Confirmed cumulative cases Antigen RDT test	Total confirmed cumulative cases	% of total confirmed cumulative cases	Total cumulative deaths	Transmission classification	Total confirmed cases in last 14 days Antigen RDT test	Total confirmed cases in last 14 days RT-PCR test	Total confirmed cases in last 14 days	% of total confirmed cumulative cases in last 14 days	Total Deaths in last 14 days
Province 1	129509	30322	159831	14.1	1722	Community transmission	0	10	10	11.9	0
Madhesh	53897	1178	55075	4.9	783	Community transmission	0	0	0	0.0	0
Bagmati	542650	32759	575409	50.9	5202	Community transmission	3	50	53	63.1	0
Gandaki	95364	24667	120031	10.6	1428	Community transmission	1	5	6	7.1	0
Lumbini	110488	28138	138626	12.3	1874	Community transmission	7	2	9	10.7	0
Karnali	24019	6325	30344	2.7	492	Community transmission	0	1	1	1.2	0
Sudurpashchim	44951	6142	51093	4.5	518	Community transmission	1	4	5	6.0	0
National Total	1000878	129531*	1130409	100	12019	Community transmission	12	72	84	100	0

Total reported in Health Emergency Operation Center (HEOC) Sitrep as of 27 November 2022, **152206 but IMU reported **129531***

Notes:

1. The source for case data used in this update is from RT- PCR test positivity reported by laboratories from various locations across Nepal, as shared by HEOC Sitrep; and IMU/IHIMS.
2. Case data is screened and cleaned by our data team for double entry, wrong entry and manual errors such as cities name in place of districts, district name in place of province etc.
3. Whereas the test positivity rate is calculated based on the test positivity reported in Sitrep for RT-PCR which may or may not be scrutinized or cleaned the same way and mark the cases on location of the laboratories rather than their place of residence.

Figure 4: Distribution of RT-PCR positive COVID-19 cases by age and sex (N= 995641)(Data reported on 27 November 2022 up to 19:00:00)



Overall, the sex-distribution remains skewed towards males. The incidence of cases is higher in the economically productive age group (15-54 years) for both males and females.

Table 2: Age Specific Case Fatality Ratio and Co-morbidity of Deaths in RT-PCR confirmed COVID-19 cases (N= 1000878)(Data reported on 27 November 2022 up to 19:00:00)

Age Group (Years)	Total confirmed cases	Death (male)	Death (female)	Deaths with any known comorbid condition	Age specific case fatality ratio (%)
0-4	9319	16	23	13	0.42
5-14	34179	13	7	10	0.06
15-24	151406	92	96	70	0.12
25-34	277595	387	265	151	0.23
35-44	206286	875	452	281	0.64
45-54	144332	1396	645	574	1.41
55-64	92143	1690	803	782	2.71
65-74	49912	1640	893	957	5.07
75-84	23598	1228	659	773	8
85+	6871	524	289	279	11.83
Unknown	5237	19	7	11	0.5
National	1000878	7880	4139	3901	1.20

$$\text{Case Fatality ratio (CFR, in\%)} = \frac{\text{Number of deaths from disease}}{\text{Number of confirmed cases of disease}} \times 100$$

COVID-19 positive lab result is temporally associated with death; causal association under investigation.

A total of 12,019 deaths have been reported. Out of the total deaths, 7,880 (65.6%) were male and 4,139 (34.4%) were female. Amongst the deaths, 3,901 persons (32.5%) had at least one known comorbidity. The age specific case fatality ratio (CFR) progressively increases with age, ranging from 0.06% to 11.8%.

PREPAREDNESS AND RESPONSE

What are the Government of Nepal (GoN) & the Ministry of Health & Population (MoHP) doing?

- From 3 November 2022 onwards, Government of Nepal has started administering second dose COVID-19 booster vaccination for people aged 55 and above and the vulnerable population (immune-deficiency/chronic patients, pregnant women, and health workers) group (data yet to be received).

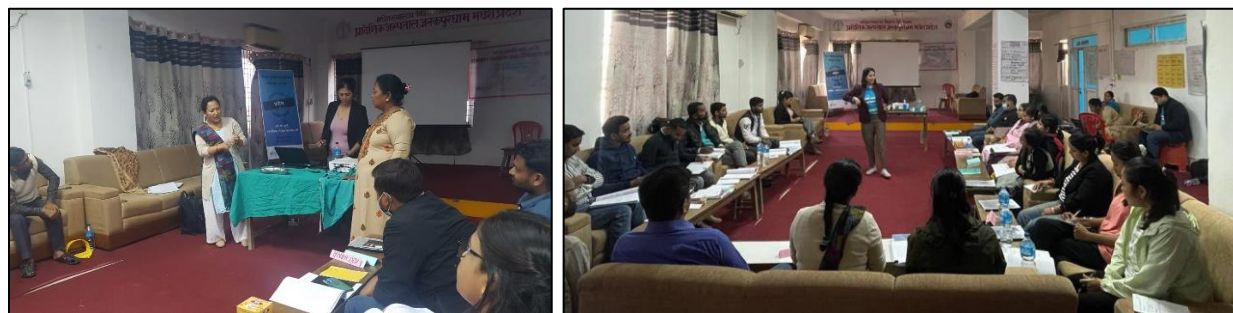
What is the WHO Country Office for Nepal doing?

Laboratory Diagnosis

- WHO Nepal has been providing technical support to the National Public Health Laboratory (NPHL) in the following activities:
 - Monitoring the quality standard of designated COVID-19 laboratories in the country through the National Quality Assurance Program (NQAP). A total of 4 designated COVID-19 laboratories participated in the NQAP this week. The result of all participating laboratories showed 100% concordant.
 - Uploading the result of genome sequencing of 30 SARS-CoV-2 positive samples in GISAID platform.

Technical Expertise and Training

- Continued routine work from the team of Technical Expertise and Training²
- WHO Nepal provided technical and financial support in conducting the following program:
 - A three-day service provider's training on Infection Prevention and Control (IPC) organized by the National Health Training Centre (NHTC) conducted in Janakpur Hospital from 23-25 November 2022. A team of four trainers trained 20 participants which included nursing staff and paramedics from 13 hospitals based in Madhesh Province.



² The routine works of the technical expertise and training team included technical support to the Ministry of Health and Population and its department for developing different guidelines/manuals, conducting health programs, and conducting capacity building activities. To perform these activities, the team coordinates and discuss with relevant government authorities and partners for effective planning and conducting the various activities.

(Left) Participants demonstrating instrument packing for autoclave and (right) Session facilitation by the Trainer, Photo credit: S.Bastola

- A month-long training for Basic Emergency Medical Technicians (BEMT)' organized by NHTC from 25 November 2022. There were 6 trainers and 16 participants which included health assistants (HA) and staff nurses from Nepal Armed Police Force (APF) Hospital (8), Highway Community Hospital, Dhading (1), Star Hospital, Lalitpur (1), Grande Hospital, Kathmandu (1), Nepal National Hospital, Kathmandu (2), Amda Hospital, Kapilvastu (1), Barnalu Health Post, Okhaldhunga (1) and Basic Health Service Center, Kavre (1).



(Left) Group photo of participants and trainers after the end of the month-long BEMT training, (right) Participants take the pre-test . Photo credit: WHO Nepal/B.S.Bist

Operational Support and Logistics

- Continued routine work from the team of Operation Support and Logistics³.

Risk Communication and Community Engagement

- On the occasion of *World Antimicrobial Awareness Week*, relevant IEC materials were shared. Videos featuring WHO Representative to Nepal highlighting the need for multisectoral collaboration to address AMR were also shared on social media.
- Episode 42 of *Paanch Maa Bigyaan*, on the importance of vaccines of older persons, was shared via SoundCloud (link [here](#)) and Facebook (link [here](#)).
- IEC materials on the following topics were shared via WHO, Country Office for Nepal, social media:
 - Omicron and new variants of concern,
 - The importance of following COVID-19 preventive measures.
- The following documents were uploaded on *ReliefWeb* (link [here](#)):

³ The routine works of the operation support and logistics team included technical support to the Management Division of the Department of Health Services for the forecasting, quantification, procurement, and distribution plan of COVID-19 commodities. The other routine activities included daily operational support to the WHO country office and seven provincial health emergency operation centers, including fleet and travel management and the procurement of required logistics and supplies.

- *Weekly COVID-19 EPI Dashboard,*
- *Focused COVID-19 and Health Media Monitoring, and*
- *Weekly WHO Nepal COVID-19 Situation Update.*
- Continued support to Ministry of Health and Population (MoHP) for its weekly national briefing. In the briefing held on 23 November 2022, the spokesperson shared updates on COVID-19, dengue cases in Nepal, COVID-19 booster vaccine. In addition, the briefing included messages about World Anti-microbial Awareness Week 2022. The briefing is broadcasted live every Wednesday at 4:15 PM via Nepal Television, which is also shared on MoHP Facebook page and WHO Facebook page.

What are the health clusters partners doing?

- Continued routine work from the team of Partner Coordination and Donor Relation⁴
- UNICEF and WHO are providing overall support for COVID-19 vaccination campaign in close coordination with health partners and donors.
- All members of the Health Cluster are supporting the COVID-19 vaccination campaign of Nepal.
- Health partners are continuing their technical, operational, and logistics support for COVID-19 responses to health-related offices and institutions throughout the country.
- COVID-19 consultation is being provided continuously by specialist teams through tele-medicine services.

WHO's STRATEGIC OBJECTIVES FOR COVID-19 RESPONSE- [link here](#) RECOMMENDATION AND ADVICE FOR THE PUBLIC

- [Protect yourself](#)
- [Questions and answers](#)
- [Travel advice](#)
- [EPI-WIN](#): tailored information for individuals, organizations and communities

USEFUL LINKS

- MoHP COVID-19 official portal is available [here](#).
- Nepal COVID-19 regular updates and resources are available [here](#)
- For COVID-19 updates from the WHO South-East Asia Region Office, please visit [here](#).
- For information about coronavirus disease (COVID-19) Pandemic from WHO, please visit [here](#)
- Please visit this [site](#) for all technical guidance from WHO.
- Online courses on COVID-19 from WHO can be found [here](#)
- WHO Coronavirus (COVID-19) Dashboard can be found [here](#)
- Visit the WHO Nepal [Facebook page](#) and webpage on COVID-19 [here](#)

⁴ The routine works include coordinating with all the divisions, units, centers of Ministry of Health and Population (MoHP) and Department of Health Services (DoHS), and the health partners for effective conduction of Health Cluster Coordination meeting. Furthermore, the works included the documentation and distribution of meeting minutes, health partner's support updates in the 3Ws (Who, What, Where) and thematic mapping, updates of WHO's support in the UNRCO 3W sheet, participate in multi-sectoral and emergency and disaster preparedness and response platforms and activities and the humanitarian country team operational meetings. Moreover, necessary support for effective coordination of Health Emergency Operation Centre (HEOC) with different stakeholders is provided.

CONTACT DETAILS

WHO Representative

Dr. Rajesh Sambhajirao Pandav
WHO Representative to the
Government of Nepal
Email: pandavr@who.int

WHO Incident Manager/ Health Cluster Co-lead

Dr. Allison Gocotano
Team Leader - WHO Health
Emergencies Program (WHE)
WHO Country Office for Nepal
Email: gocotanoa@who.int

Communication/Media Focal Point

Ms. Tsering Dolkar Gurung
Media, Communication and Public
Information Officer
WHO Country Office for Nepal
Email: gurungt@who.int