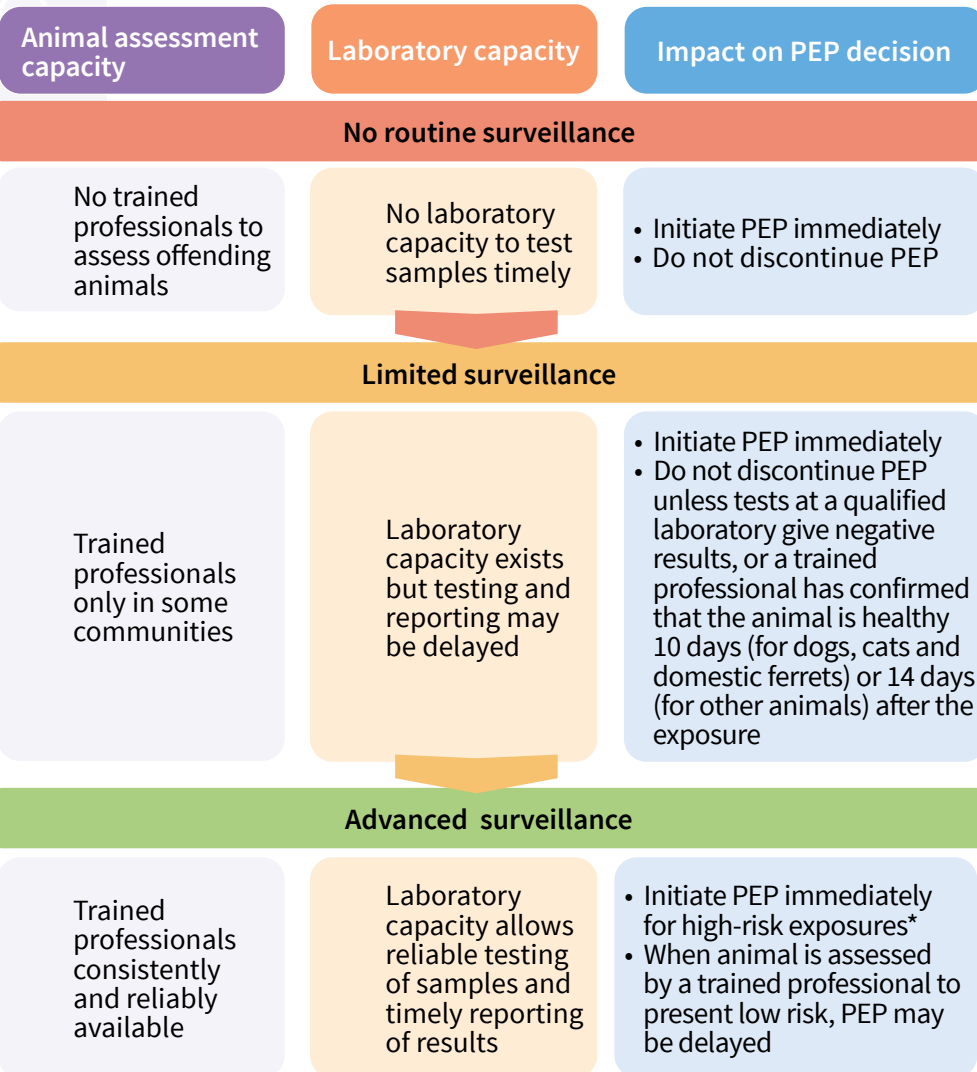
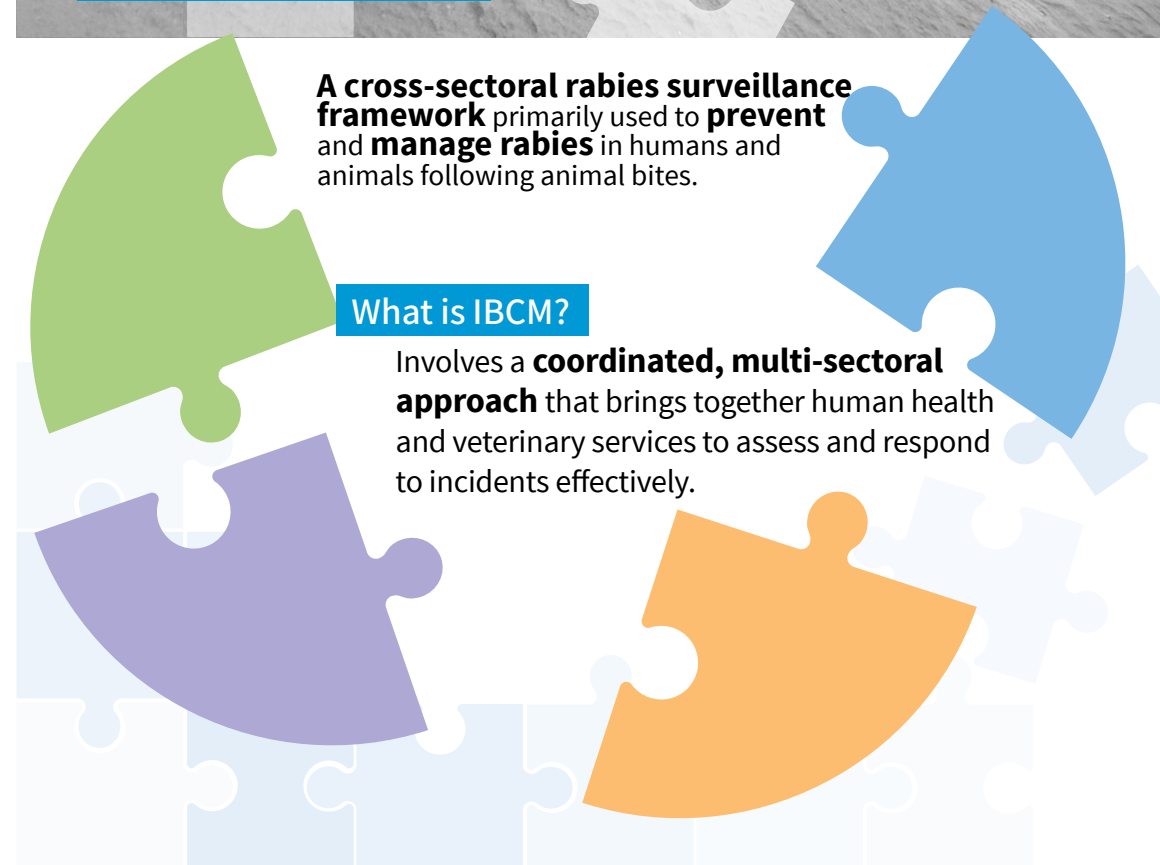


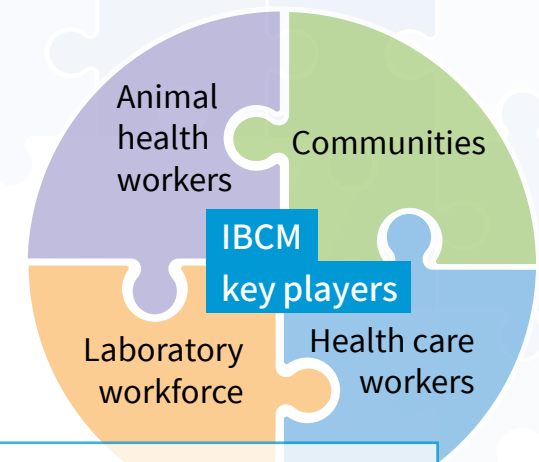
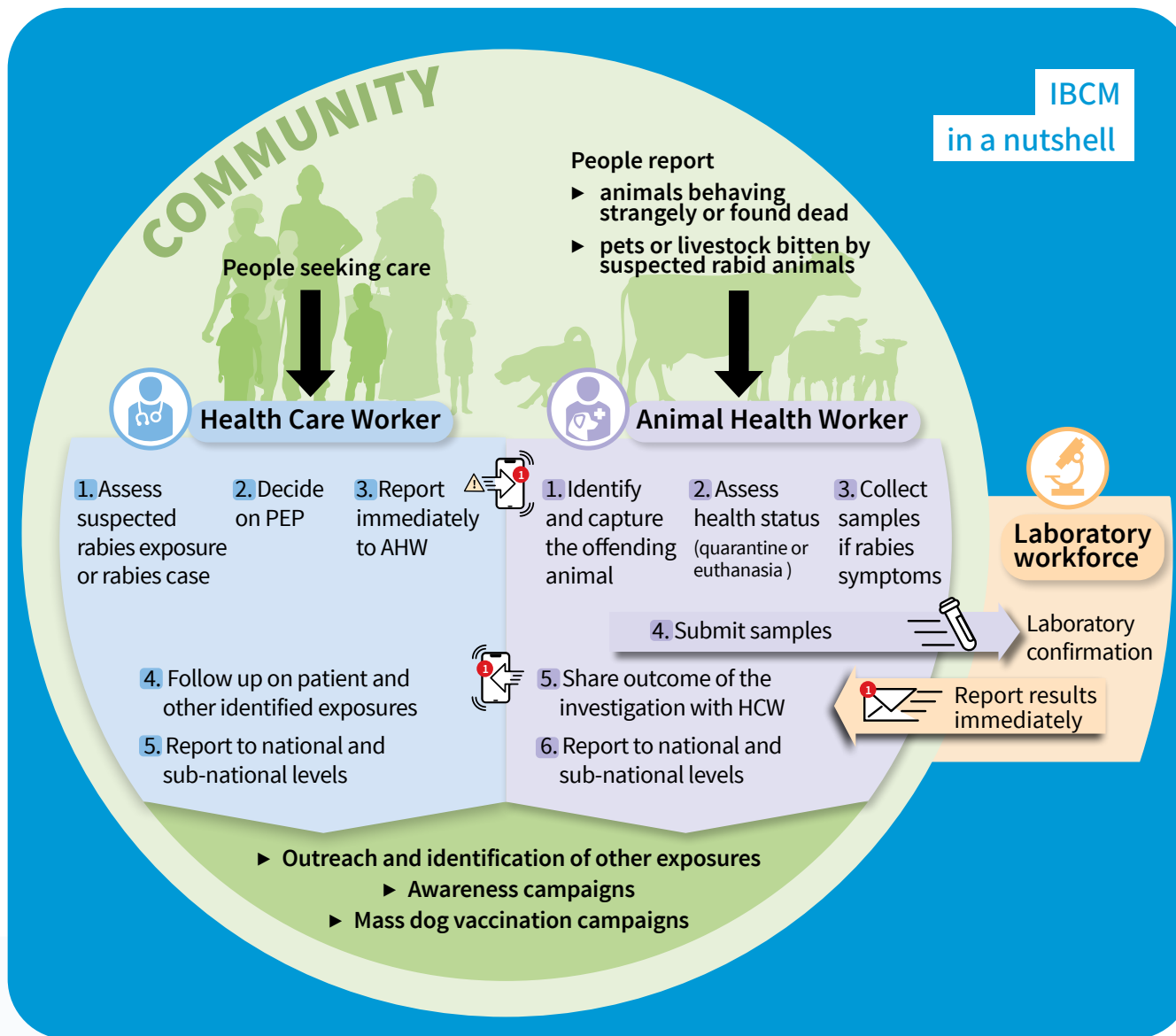
Surveillance capacity impacts PEP decision making

Surveillance capacity impacts PEP decision making. IBCM can be used to **follow a risk-based approach** to deliver PEP.



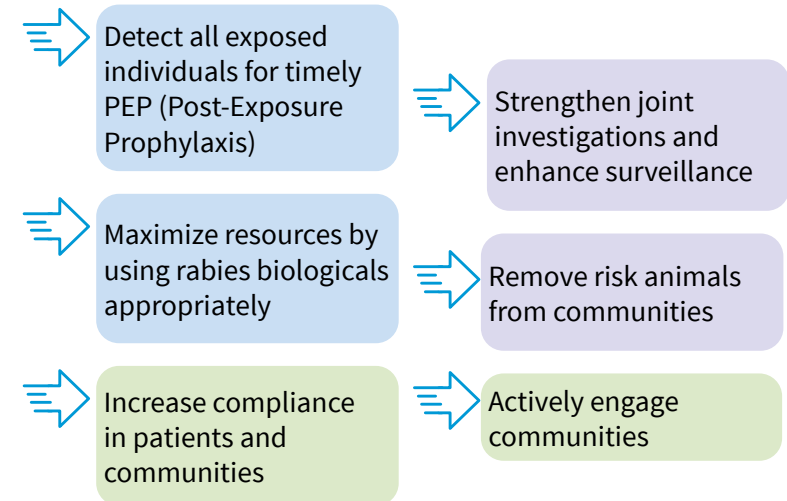
* bites to the head, face, neck or other highly innervated sites; multiple or deep wounds; bites in children





IBC focuses on prompt data collection and transmission, rapid response and coordinated action across sectors.

Benefits of coordinated action



IBC further resources



Decide with confidence
Rabies PEP Decision Tree
([Access the poster](#))



IBC Checklist
([Access the document](#))



IBC main goals

