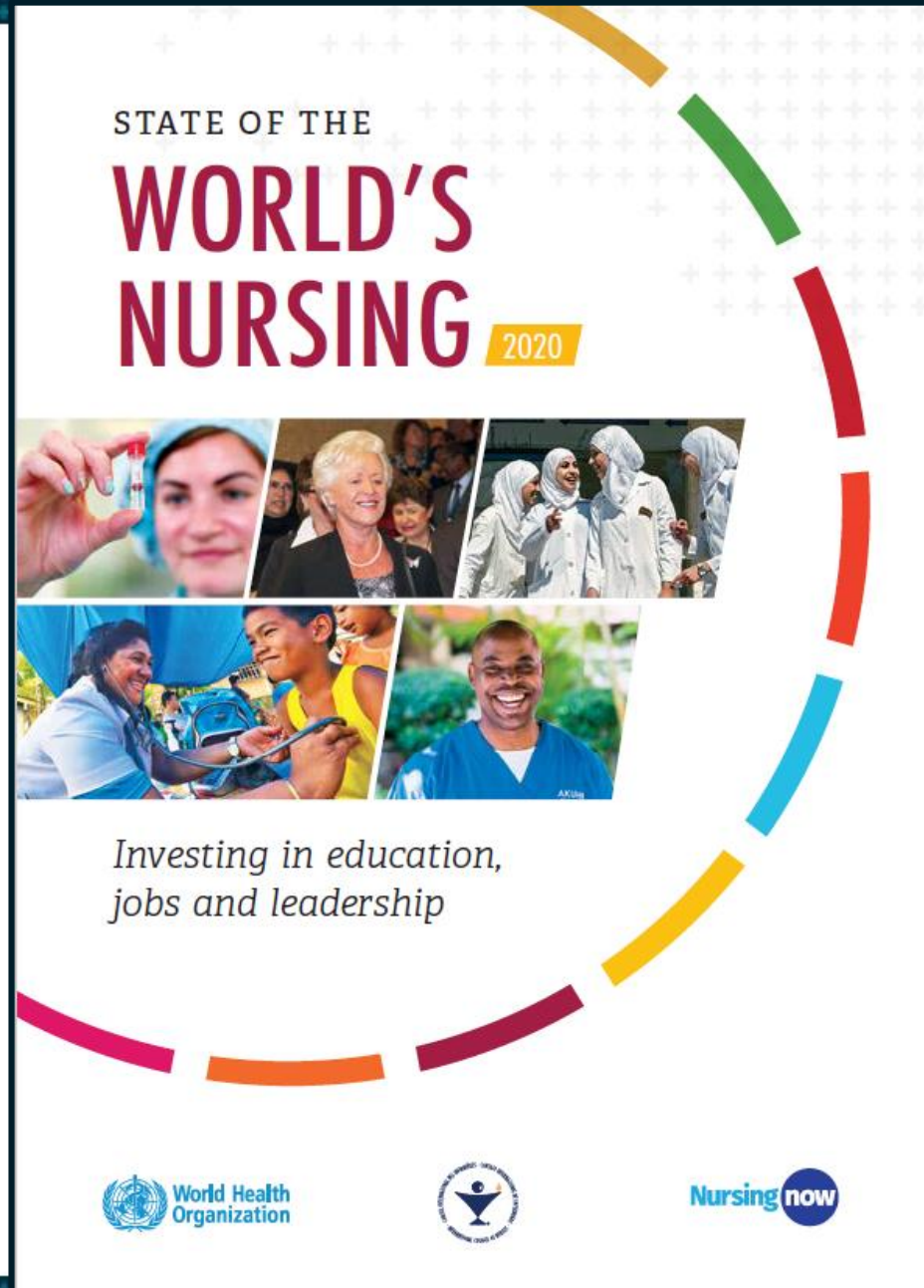


# Taking SoWaN forward: Facilitating policy dialogue at country level

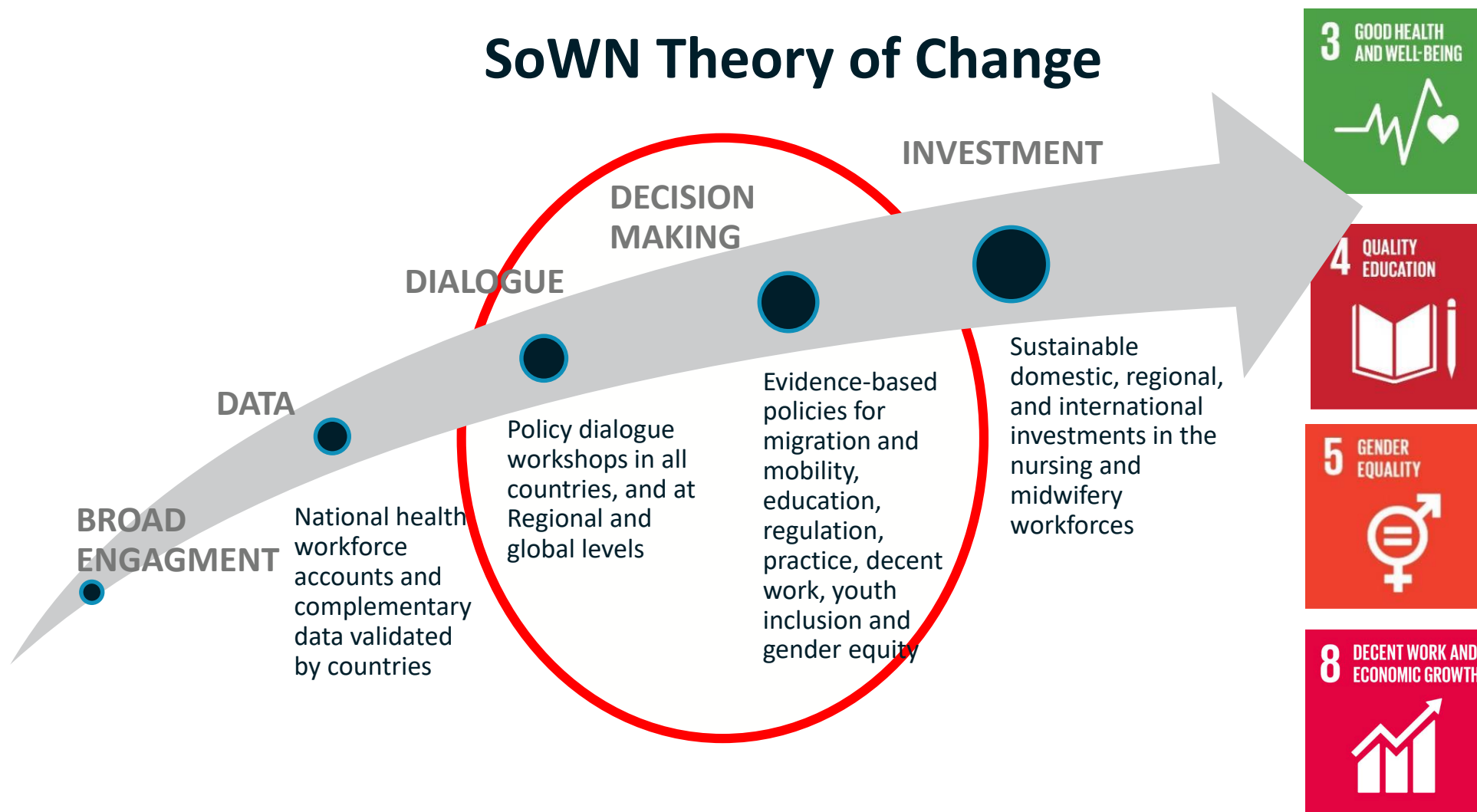
Karen Daniels, Health Workforce, WHO

Peter Johnson, Jhpiego

**From Data to  
Investment:  
Promoting Policy  
Actions around the  
State of the World's  
Nursing Report**



# SoWN Theory of Change



Today we are... Ensuring the investment case and policy agenda is data-driven and nurse-led



# Policy Dialogue within the SoWN Theory of Change

- Within this ToC, policy dialogue is seen as a approach to guide evidence based policy development
- This approach should
  - enable interactions between stakeholders
  - integrate programme experience with evidence from research and programme data
  - be conducted in a participatory and consultative manner
  - have clear objectives, be inclusive and transparent, and provide opportunity for reflection
  - facilitate the promotion of dialogue between different stakeholders in order to reach a decision

EVIPNet Europe, 2016

## Policy Dialogue within the SoWN Theory of Change (2)

- Successful policy dialogues
  - Allow participants to speak freely
  - Include reliable evidence
  - Are well facilitated
  - Ensure fairness and legitimacy through the inclusion of all relevant stakeholders
  - Include participants who have a sound knowledge of the institutional and political context
  - Take into account the (a) the organizational context, (b) the political and institutional context and (c) power relations

Robert et al 2019

## Policy Dialogue within the SoWN Theory of Change (3)

- Based on these principles, the WHO will be supporting policy dialogue at country level, using the SoWN report and country data, as a starting point
  - Developing a set of materials that can assist the nursing and midwifery profession to take the data forward through dialogue
  - Includes facilitator guidance, guidance to understanding the data, and a set of meeting materials
  - Allows for both in person and virtual meetings
  - Is directed at encouraging investment shaped by the SoWN policy recommendations

# State of the World Nursing National Policy Dialogue Process

## Phase 1

### Inception & Pre-planning

Timeline – Currently – July (flexible)

#### Activities for nurse/midwife leaders:

- 1) Review report materials
- 2) Review of country data (36 SoWN indicator reporting sheet)
- 3) Complete facilitator orientation
- 4) Participate in virtual Triad Meeting (GCNMO's)

#### Outcomes:

- Prepared for pre-planning & inception meeting with nursing stakeholders and partners

## Phase 2

### Identifying Policy Priorities & Planning for Action

Timeline- July-December (flexible)

#### Activities for nursing leaders and stakeholders:

- 1) Review country profile
- 2) Review prep materials for national policy strategy virtual sessions
- 2) Conduct National Policy Strategy Virtual Sessions

#### Outcomes:

- Priority areas for policy action identified
- SMART policy objectives developed
- Action plan established for enacting prioritized policy changes
- Roles and responsibilities assigned
- Impact tracker use enacted

## Phase 3

### Implementing and Capturing Policy Changes

Timeline- Ongoing through 2030

#### Activities:

- 1) Work on prioritized list of policy changes
- 2) Report on progress
- 3) Drive agenda forward

#### Outcomes:

- Policy changes made
- Ongoing use of the impact tracker

## Your role

- We are depending on each of you as champions of nursing and midwifery to also be champions for policy dialogue
- Through our regional and country offices we will be reaching out to the nursing leadership
- We know that we can count on you to support this process through your leadership and practical contribution to making nursing evidence matter to decision making for a strengthened health workforce



## Our collective action

Trigger relevant policy reforms and investment decisions

- in support of the nursing and midwifery workforce
- as part of overall health workforce and health system strengthening

For more information

**danielsk@who.int**

Thank you