



KEMENTERIAN
KESEHATAN
REPUBLIK
INDONESIA



-THE NEW NORMS OF WORKERS' HEALTH-

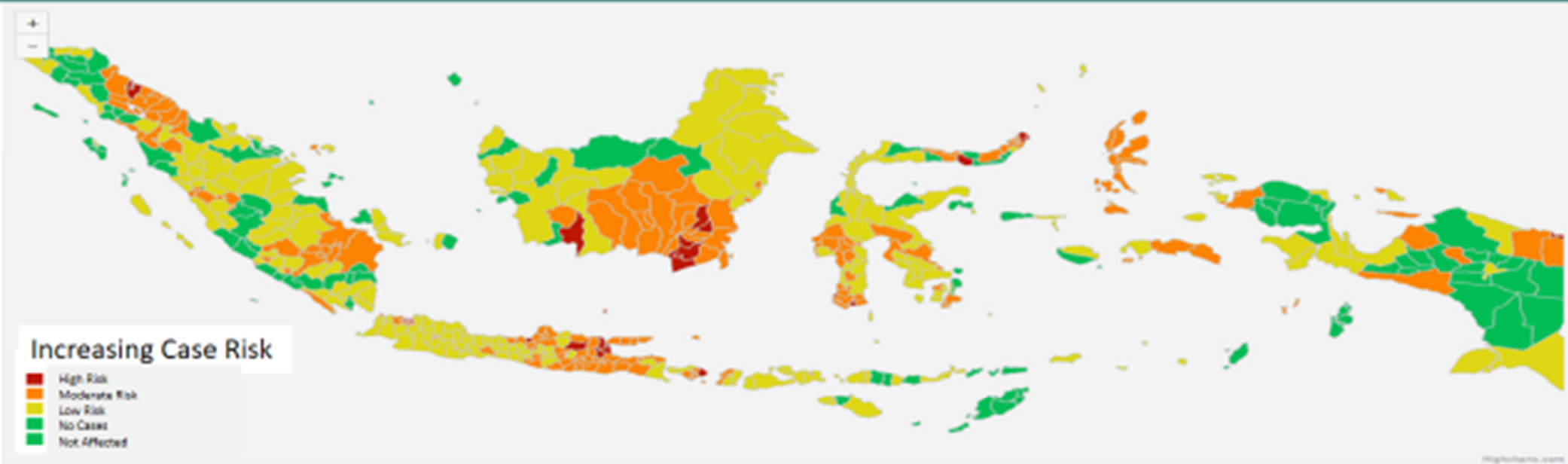
INITIATING HEALTH PROTOCOLS AT THE WORK PLACES AND PUBLIC PLACES TO PREVENT AND CONTROL COVID 19

**MINISTRY OF HEALTH
INDONESIA, 2020**



"OUR TASK IS NOT YET OVER,
ADAPTATION DOES NOT MEAN
SURRENDER, OR EVEN DEFEATED. IT
MEANS THAT WE ARE OBLIGED TO
ADAPT THE NEW CULTURE IN
ACCORDANCE TO HEALTH PROTOCOL"
-PRESIDENT JOKO WIDODO,
10 June 2020-

INCREASING RISKS OF COVID-19 CASES BY CITIES/DISTRICTS



31 High Risk

177 Moderate Risk

204 Low Risk

48 No Cases

54 Not Affected

As 17 July 2020

Trends of Daily COVID-19 Cases in Indonesia



**ADAPTATION OF NEW CULTURE
(ADAPTASI KEBIASAAN
BARU/AKB)** is an effort to adapt
new culture to be able to do daily
activities in any setting But still
manage to practice healthy life
safe from COVID-19

✧ **New Life styles**



**Productive Society
and protected/Safe
from COVID-19**

HEALTH PROTOCOLS

- **PROTECTING INDIVIDUAL HEALTH**
- PROTECTING PUBLIC HEALTH**

- **CLEANER**
- **HEALTHIER**
- **MORE COMPLIANCE**

❖ WORKPLACES (OFFICES & INDUSTRIES)

❖ PUBLIC PLACES AND FACILITIES



PEOPLE MOBILIZATION,
SOCIAL INTERACTION OF
PEOPLE, CROWD, PHYSICAL
CONTACT AND RISK OF
CONTAMINATION

MULTISECTORS/
INTER MINISTERIAL

LOCAL AUTHORITIES

PROFESSIONAL
AND COMMUNITY
ORGANIZATION

PRIVATE SECTORS

HEALTH PROTOCOL

People live Healthy,
Productive and Safe
from COVID 19

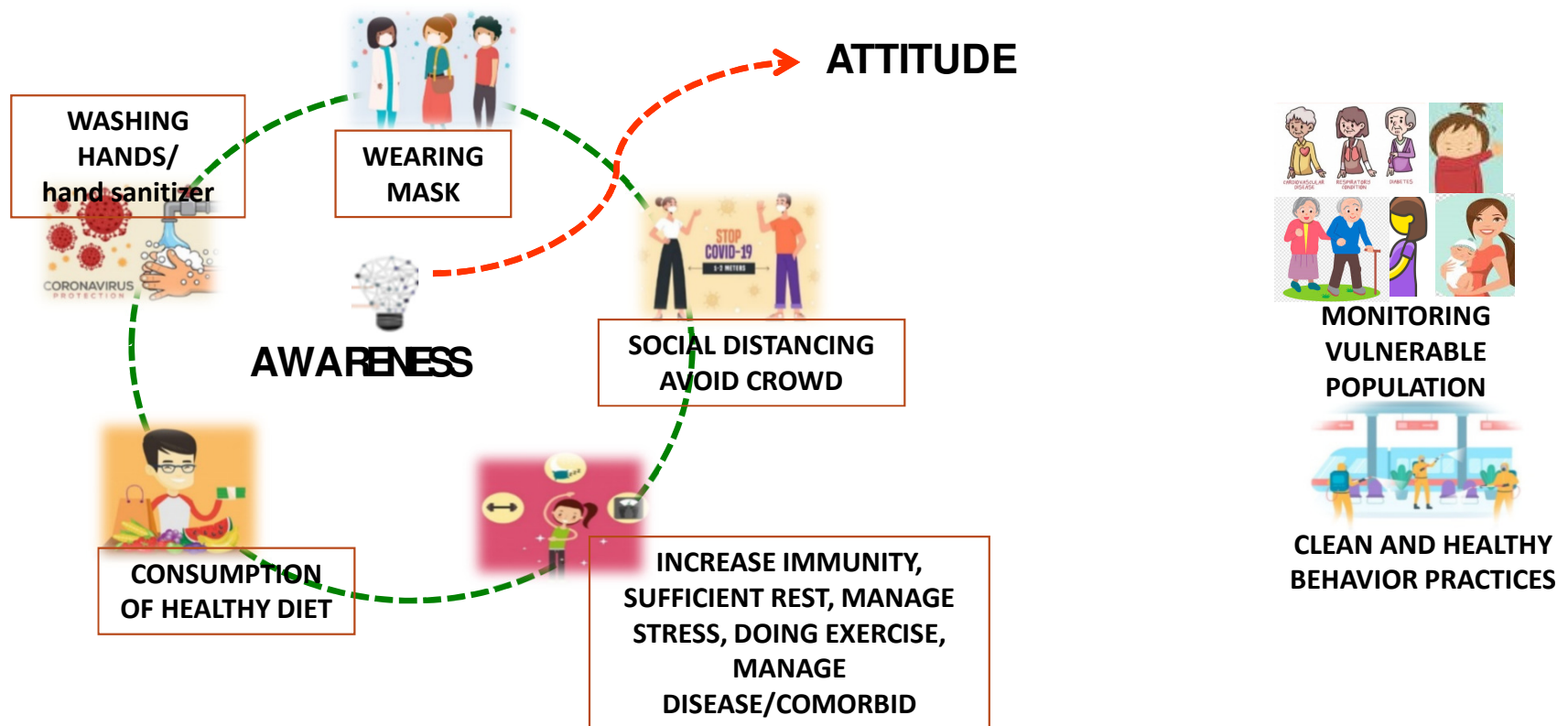


HEALTH PROTOCOLS

1. INDIVIDUAL HEALTH PROTECTION
2. PUBLIC HEALTH PROTECTION

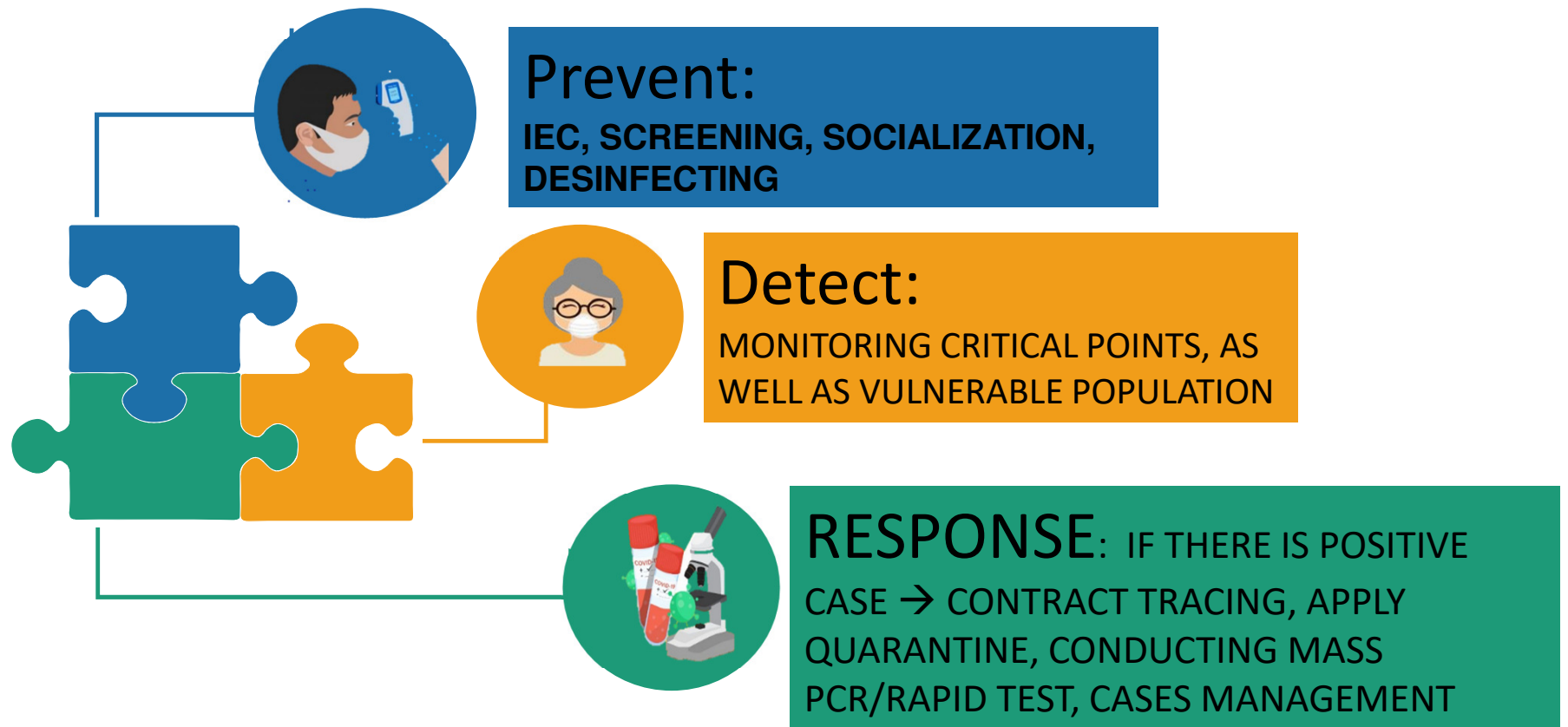
HEALTH PROTOCOL COMPONENT

1. INDIVIDUAL PROTECTION

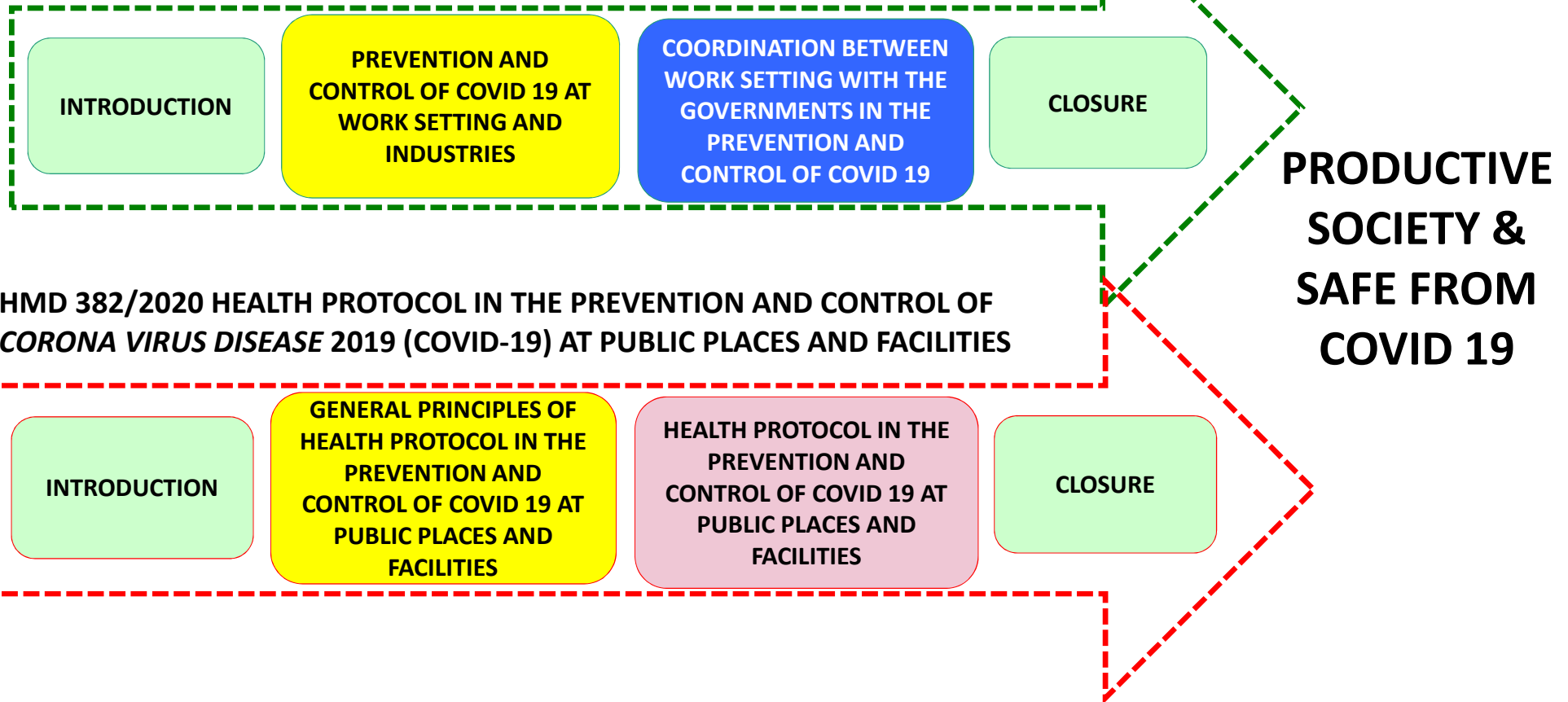


HEALTH PROTOCOL COMPONENT

2. PUBLIC HEALTH PROTECTION



HMD 328/2020 GUIDELINES OF PREVENTION AND CONTROL OF COVID 19 AT WORK SETTINGS AND INDUSTRIES
(IN SUPPORT OF THE SUSTAINABILITY OF PRIVATE BUSINESS AND STIPULATING ECONOMIC GROWTH)
AT PANDEMIC COVID 19 ERA



PROTOCOL (FERRY TERMINAL) ENTRY POINT

1. Regular Disinfectant on Ferry
2. Physical Distancing Marking at Passenger Seat and Corridor
3. Body Temperature Check upon arrival in Ferry Terminal
4. Passenger maintain physical distancing and wear mask during Immigration Clearance
5. Luggage staff to do disinfectant for luggage handle
6. Driver to wear mask and maintain physical distancing during traveling in the vehicle



PROTOCOL (ATTRACTIONS) – MANGROVE

1. To wear face mask at all times
2. To provide sufficient facilities of hand wash and liquid soap or hand-sanitizer
3. To do 1 meter away of physical distancing with other guest
4. To do regular cleaning daily
5. To do regular disinfecting of attraction venue



CLOSURE

- ❖ BOTH HEALTH MINISTERIAL DECREE 328/2020 AND 382/2020 HAVE RECEIVED POSITIVE RESPONSES FROM MULTI STAKEHOLDERS (GOVERNMENTS AND PRIVATE SECTORS)
- ❖ ALL SECTORS ADOPTING THOSE TWO PROTOCOLS AND DEVELOPING MORE TECHNICAL GUIDANCE IN THEIR EACH SETTING
- ❖ SPECIFIC HEALTH PROTOCOL WAS ALSO LAUNCHED FOR MANAGING THE ARRIVAL OF LOTS OF INDONESIAN MIGRANT WORKERS (DOMESTICS AND PROFESSIONALS) AS WELL AS RETURNING INDONESIAN (BUSINESS, PERSONAL TRIP, STUDENTS ETC)
- ❖ COVID-19 HAS AFFECTED LOTS OF DIMENSIONS OF LIFE, HEALTH, SOCIAL, ECONOMIC AND PSYCHOLOGICAL → WE HAVE TO FIGHT COVID 19 BY ADAPTING NEW LIFESTYLE/CULTURE TO BE ABLE TO SURVIVE
- ❖ MAY THE ALMIGHTY GOD BE WITH US AND PROTECTING US ALWAYS



