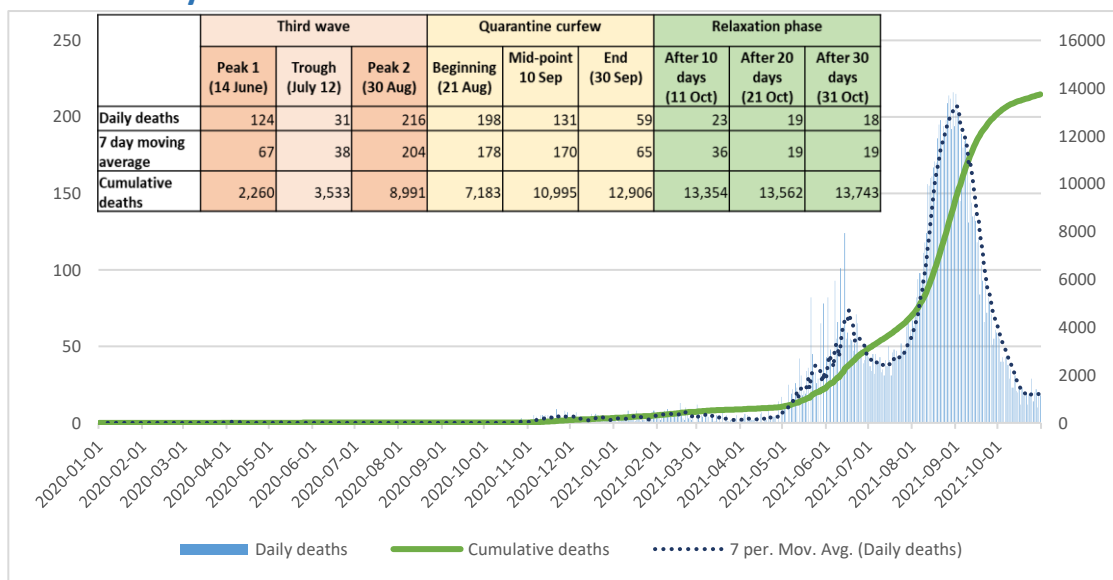




COVID -19 Situation Report

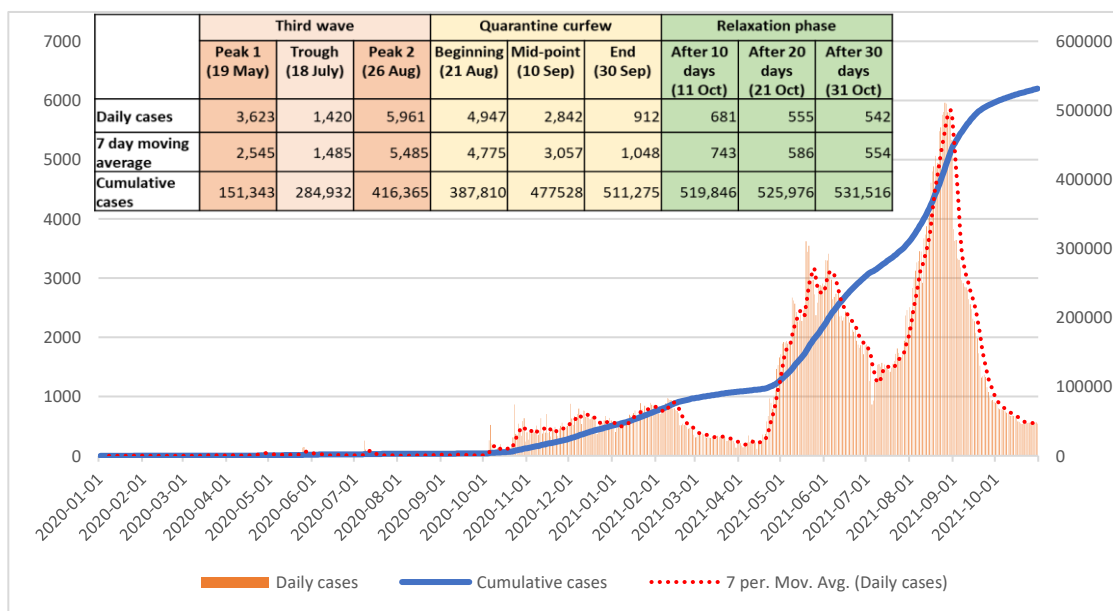
1. Daily deaths and cumulative deaths



Source: Ministry of Health. Data updated until 31 October 2021

- Deaths peaked on 30 August and have fallen since, with the 7 day moving average declining from 204 to 19 deaths as of 31 October
- A plateau in the number of deaths is observed over the last 2-3 weeks
- Daily deaths reported as of 31 October are still higher than the pre-3rd wave levels

2. Daily cases and cumulative cases

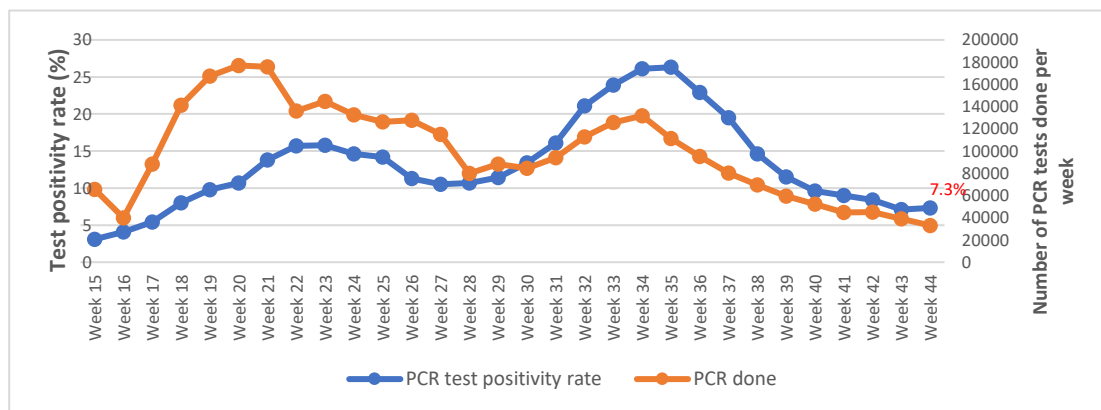


Source: Ministry of Health -Daily reported cases. Data updated until 31 October 2021

- Cases peaked on 26 August and have fallen since, with the 7 day moving average declining from 5,485 to 554 as of 31 October
- A plateau in the number of cases is observed over the last 2-3 weeks
- Daily cases reported as of 31 October are still higher than the pre-3rd wave levels

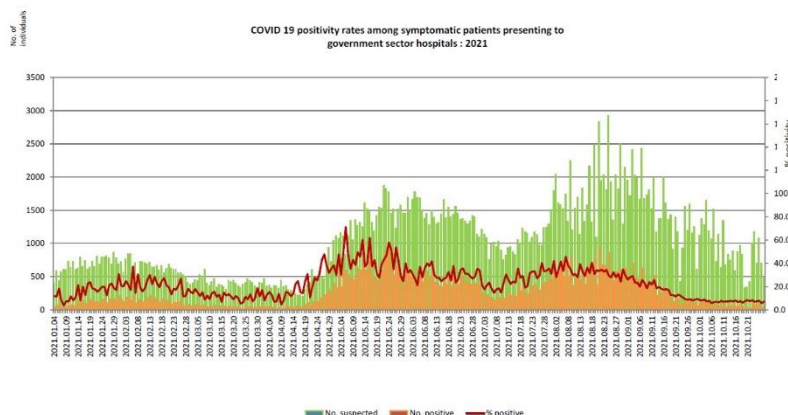


3. Test positivity rate



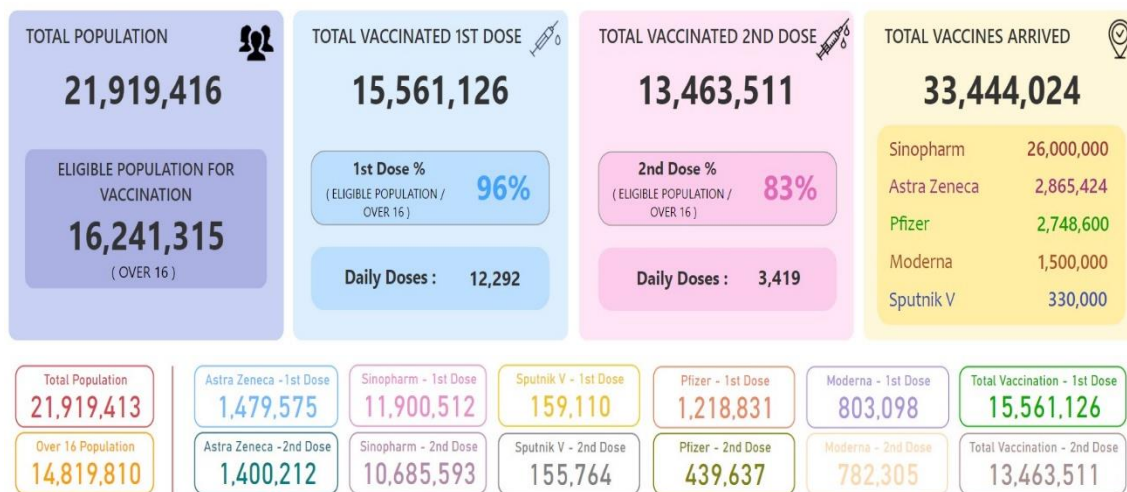
Source: Weekly test positivity rate - National COVID-19 Surveillance System of Sri Lanka. Data updated until 31 October 2021

- PCR test positivity rate has plateaued over the past 2 weeks
- COVID-19 positivity rates among symptomatic patients presenting to government sector hospitals has also been fairly constant over the past 3 weeks
- Around 33,000 PCR tests were conducted over the past week (Oct 25-31). Rapid Antigen Tests are also widely used for testing.
- A review/revision of the existing testing strategy is an area that needs urgent attention



Source: Epidemiology Unit, Ministry of Health. Data updated until 31 October 2021

4. Vaccination

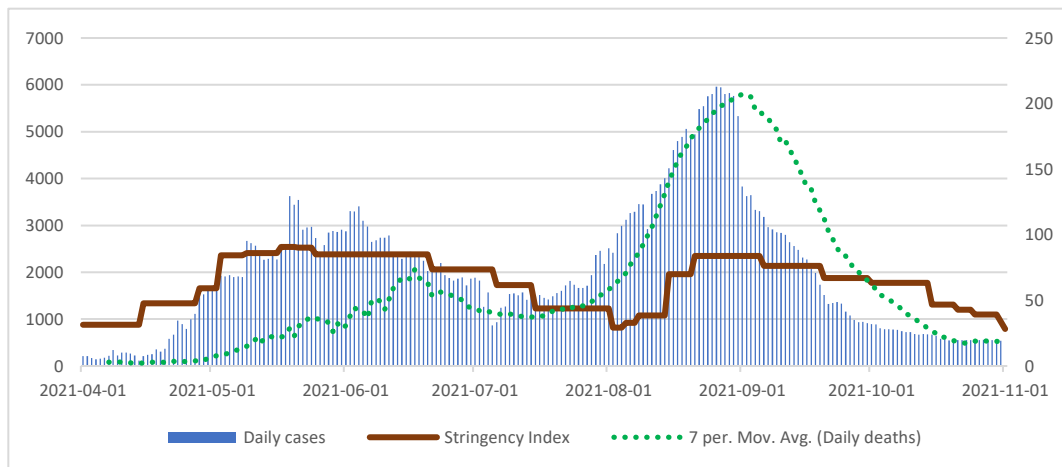


Source: <https://www.presidentsoffice.gov.lk/index.php/vaccination-dashboard/>. Accessed on 14 October 2021

- The accelerated vaccination effort has now covered 96% of the over 16 year population and 61% of the total population with both doses i.e. over 29 million doses have been administered
- Data on vaccination of 16 - 30 year old in each district should be closely monitored for evidence of vaccine hesitancy and to address it early



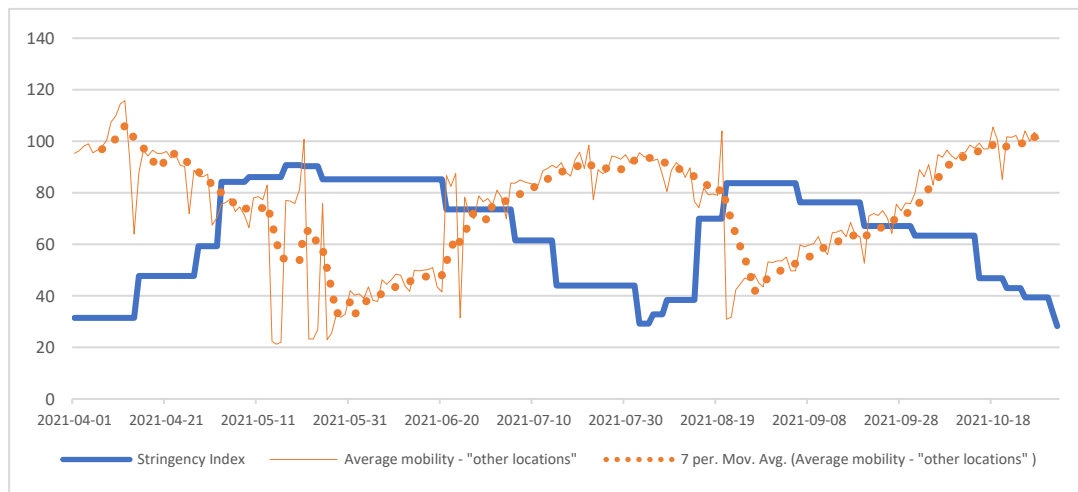
5. The impact of increased stringency on deaths and cases



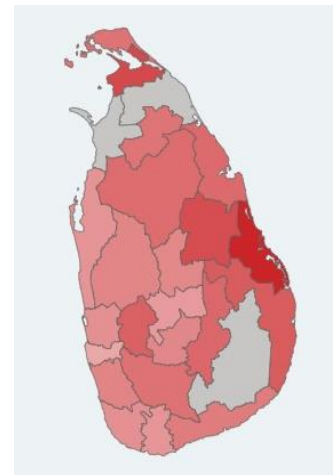
- The stringency continues to decline and is now at the lowest level seen during the 3rd wave

Source: Oxford Stringency Index (SI) values are considered. Data until 21 June accessed from Oxford COVID Government Response Tracker; same methodology used for calculations of SI from 21 June onwards. Data updated until 1 November 2021.

6. Mobility



Source: Google Community Mobility data are considered. Data available until 28 October



Source: Facebook mobility data.
Average mobility from 1 Oct – 27 Oct 2021

- The average mobility during the past 2 weeks was similar to the pre-COVID levels
- The evidence on mobility underlines that for restrictions to be effective, Public Health and Social Measures (PHSM) advocacy must be strengthened for better individual/ household compliance particularly, in non-urban areas

- Subnational variations in mobility levels continue to be observed.



7. Regional situation *(Updated as of 28 October 2021)*

Country		New cases (last 7 days)	% change in new cases	Cumulative cases	New deaths (last 7 days)	% change in new deaths	Cumulative deaths	Test Positivity Rate (last 7DMA)	% change in TPR
India		106,657	-0.6	34,215,653	3,002	105.3	455,653	1.3	-10.0
Thailand		63,463	-11.1	1,875,315	436	-23.4	18,922	13.9	-5.4
Myanmar		6,000	-25.9	496,901	159	-28.4	18,603	6.0	-21.4
Indonesia		4,608	-25.1	4,241,809	222	-16.5	143,299	0.4	-18.8
Sri Lanka		3,896	-7.8	537,201	111	-17.8	13,654	10.1	-0.6
Nepal		3,828	20.6	810,880	62	8.8	11,380	7.7	-17.5
Bangladesh		1,899	-28.2	1,568,563	50	-18.0	27,841	1.7	-19.3
Maldives		767	32.0	87,186	3	50.0	242	3.2	51.0
Timor-Leste		39	-32.8	19,785	1	0.0	121	2.7	-35.7
Bhutan		3	50.0	2,620	0	0.0	3	0.0	-100.0
DPR Korea		0	0.0	0	0	0.0	0	NA	NA
SEAR total		191,160	-6.0	43,855,913	4,046	46.0	689,718	NA	NA

Source: WHO SEARO.