

Coronavirus disease 2019 (COVID-19)

Data as reported by the Thai Ministry of Public Health

02 May 2020

WHO Thailand Situation Report


2,966
Confirmed
(6 new)


54
Deaths


180
Hospitalized


103
Health care
staff cases


2,732
Recovered

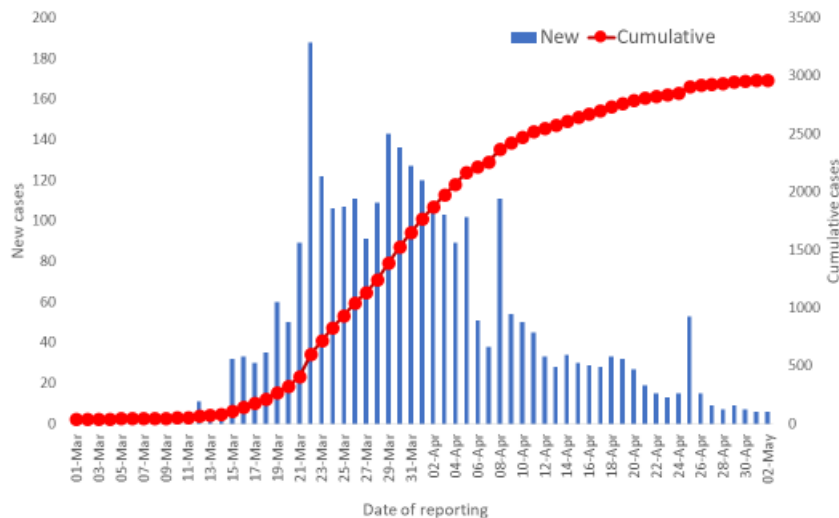


**THAILAND
SITUATION
IN THE PAST
24 HOURS**

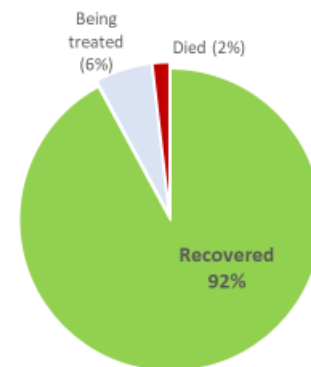
SPOTLIGHT

- On the 2nd May 2020, 6 new cases of laboratory-confirmed COVID-19 were announced by the Ministry of Public Health of Thailand (MoPH), bringing the total number of cases to 2,966. No deaths were reported today
- Of all reported cases, more than 92% (2,732) have recovered, about 1.8% (54) have died, and 6% (180) are receiving treatment
- Two cases were identified in people entering Thailand (from India and Japan); both are held in State Quarantine. Two cases are close contacts of previously confirmed cases (in Bangkok and Phuket) and two cases were detected through active case finding in Phuket
- To date, 68 of the total 77 provinces have reported cases. 29 of these 68 provinces have not reported any new cases during the past 28 days

New and cumulative COVID-19 cases in Thailand,
by date of reporting



Treatment outcomes of
COVID-19 patients (n=2966)




Source: MoPH, 2 May 2020

UPDATE ON THE ADJUSTMENT OF RESTRICTIONS

- Following the extension of the Emergency Decree, the Government published Directives # 5 and 6 on 1st May to provide guidance for the implementation of phase 1, effective 3rd May, including.
 - The sale of alcohol is allowed, but consumption must be at home and gatherings are not allowed. Provincial Governors have the authority to ban such sales according to the local situation
 - Travel between provinces should be avoided or delayed; anyone crossing provincial boundaries will be screened at checkpoints. Provincial Governors have the authority to require quarantine for people traveling from provinces where new cases are still being reported
 - Restaurants and food outlets in shopping malls can open, but only take-home service is allowed

- Business operators must follow guidance issued by the Department of Health (DoH)
 - Five key measures are: cleaning, wearing masks, provision of hand washing stations, physical distancing, and limiting the number of people on site.
 - Additional measures are: temperature screening, reducing time spent in close contact, 1 metre spacing for queuing and increasing ventilation
 - An online platform “Thai stop COVID” is available at <http://stopcovid.anamai.moph.go.th> for business operators to self-assess whether or not they meet DoH guidance.
 - Businesses will be subjected to random checks. Members of the public are encouraged to contribute to monitoring the adherence of business operators to guidance
- The Center for COVID-19 Situation Administration reiterated that collaboration from the public is key. Decisions to move to subsequent phases of re-opening will depend the number of new cases and of people violating curfew
- MoPH recommendations for individual behaviour after re-opening include:
 - All people, especially those at higher risk such as older persons should avoid going outside home
 - People should avoid close contact with others, especially any mass gathering
 - Everyone should wear a mask every time going outside home and wash their hands frequently

ADVICE FOR THE PUBLIC



When facing a situation such as COVID-19 it is normal to experience:

- ⦿ Feeling tense
- ⦿ Being unable to focus
- ⦿ Having racing thoughts

These are all signs of stress. Recognizing these signs is a first step to managing them.

#COVID19
#coronavirus



We can help to manage stress by speaking about our concerns and with techniques like:

- ⦿ Talking to friends and family
- ⦿ Activities such as breathing or relaxation exercises
- ⦿ Minimizing stressors such as distressing news
- ⦿ Taking care of our diet, sleep, exercise

#COVID19
#coronavirus

WHAT WHO IS DOING TO PROVIDE SUPPORT TO THAILAND

WHO Thailand is in frequent direct contact with the Royal Thai Government through the Ministry of Public Health, sharing information on key developments, guidelines and scientific updates.

WHO supports the wider UN response, including working with key partners and the Ministry of Public Health to support migrant populations in Thailand. WHO also provides information and advice to staff of the UN system in Thailand.

MEDIA

WHO Thailand's [website](#), [Twitter](#) and [Facebook](#) accounts, regularly provide content on all aspects of the outbreak in Thailand and around the world. Media queries can be directed to sethaweabmaster@who.int and kanpirom@who.int



USEFUL LINKS

- The Thailand COVID19 situation report is available in Thai and English, please [visit](#).
- For regular updates on WHO's response in Thailand, please [visit](#).
- For global figures and technical advice from WHO, please [visit](#).

World Health Organization Country Office for Thailand
4th Fl., Permanent Secretary Bldg.3 Ministry of Public Health,
Nonthaburi Thailand, 11000

Media queries sethaweabmaster@who.int and kanpirom@who.int



For latest updates and resources, please visit: