

Coronavirus disease 2019 (COVID-19)

Data as reported by the Thai Ministry of Public Health



World Health
Organization
Thailand

25 May 2020

WHO Thailand Situation Report



3,042

Confirmed
(2 new)



57

Deaths
(1 new)



57

Hospitalized



2,928

Recovered

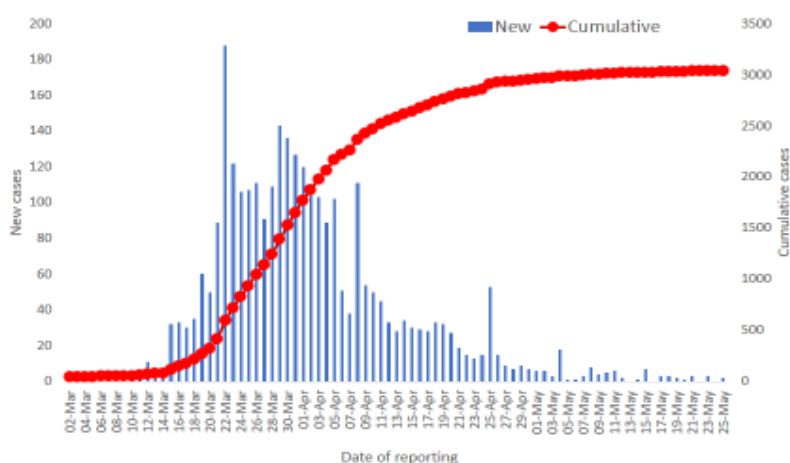


THAILAND
SITUATION
IN THE PAST
24 HOURS

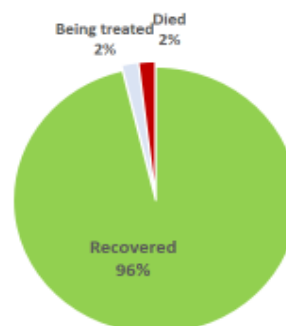
SPOTLIGHT

- On the 25th of May 2020, the Ministry of Public Health of Thailand (MoPH) announced two new cases of laboratory-confirmed COVID-19, bringing the total number of cases to 3,042.
- The first case is a 46-year-old female in Phuket, close contact of an earlier reported case. She tested positive on 24th May and has not developed symptoms.
- The second case is a 55-year-old female Thai spa worker who was repatriated from Russia on 20th May. She tested positive in quarantine on 24th May and is also asymptomatic.
- One new death was reported today. The deceased is a 56-year-old female Thai national. She had pre-existing renal failure, diabetes and hypertension and died on 24th May.
- As of 22nd May a total of 375,453 samples were tested. 55% tested by government laboratories and 45% by private laboratories.

New and cumulative COVID-19 cases in Thailand,
by date of reporting



Treatment outcomes of
COVID-19 patients (n=3042)



Source: MoPH, 25 May 2020

UPDATE FROM THE MINISTRY OF PUBLIC HEALTH

- The Department of Health (DoH) explained preparations for reopening nurseries. The DoH advises all nurseries to implement core public health measures such as body temperature screening, wearing masks, handwashing, physical distancing during meals and nap time, disinfection of common areas, and reducing congestion. There are approximately 30,000 nurseries in Thailand, and approximately 20,000 are under the supervision of the Ministry of the Interior.
- Nursery owners/managers are advised to:
 - Explain measures to staff and parents.
 - Monitor staff health
 - Establish communication channels with parents
 - Report any suspected cases to healthcare workers immediately

- Nursery staff are advised to:
 - Stop working and seek medical care immediately if they become ill.
 - To divide children into groups (up to 6 per group). Staff will care for their group until the end of the day to avoid cross contamination among children.

ADVICE FOR THE PUBLIC



- COVID-19 is an infectious disease that primarily attacks the lungs.
- Smoking impairs lung function making it harder for the body to fight off coronaviruses and other diseases.
- Tobacco is also a major risk factor for noncommunicable diseases like cardiovascular disease, cancer, respiratory disease and diabetes which put people with these conditions at higher risk for developing severe illness when affected by COVID-19.
- Available research suggests that smokers are at higher risk of developing severe disease and death.

WHAT WHO IS DOING TO PROVIDE SUPPORT TO THAILAND

WHO Thailand is in frequent direct contact with the Royal Thai Government through the Ministry of Public Health, sharing information on key developments, guidelines and scientific updates.

WHO supports the wider UN response, including working with key partners and the Ministry of Public Health to support migrant populations in Thailand. WHO also provides information and advice to staff of the UN system in Thailand.



- The Thailand COVID19 situation report is available in Thai and English, please [visit](#).
- For regular updates on WHO's response in Thailand, please [visit](#).
- For global figures and technical advice from WHO, please [visit](#).

World Health Organization Country Office for Thailand
4th Fl., Permanent Secretary Bldg.3 Ministry of Public Health,
Nonthaburi Thailand, 11000

Media queries sethaweabmaster@who.int and kanpirom@who.int



For latest updates and resources, please visit: