

# Coronavirus disease 2019 (COVID-19)

Data as reported by the Thai Ministry of Public Health



World Health  
Organization  
Thailand

05 June 2020

## WHO Thailand Situation Report



**3,102**  
Confirmed  
(1 new)



**58**  
Deaths



**73**  
Hospitalized



**2,971**  
Recovered

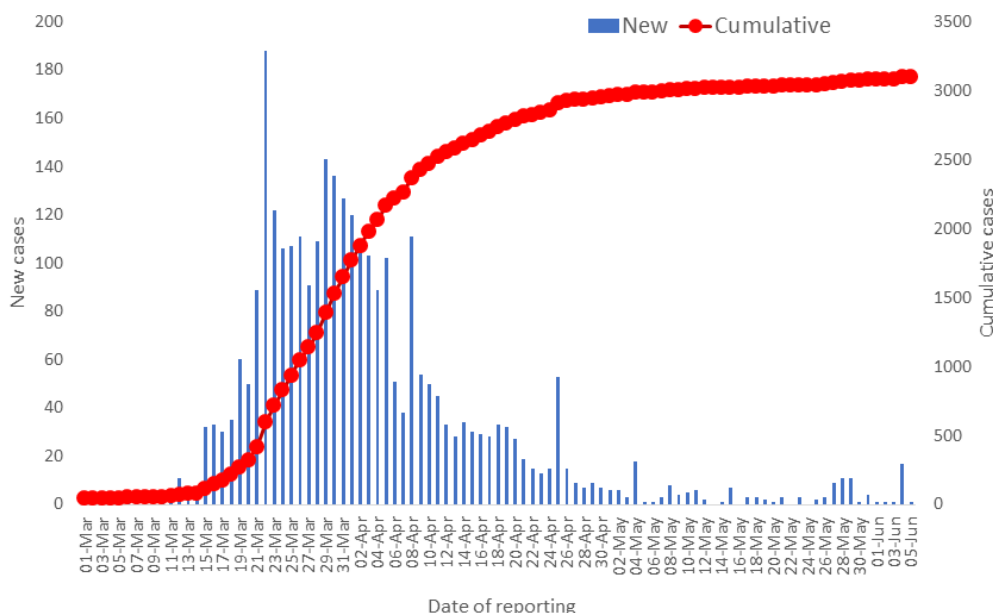


**THAILAND  
SITUATION  
IN THE PAST  
24 HOURS**

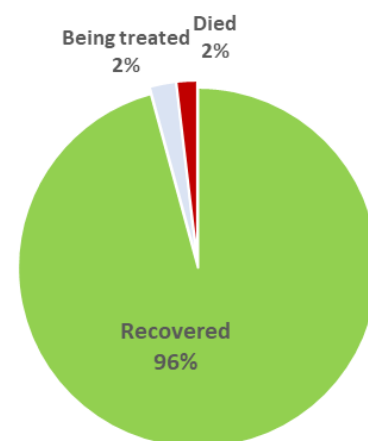
## SPOTLIGHT

- On the 5th of June 2020, one new case of laboratory-confirmed COVID-19 was reported by the Ministry of Public Health, bringing the total number of cases to 3,102.
- Of these, 96% (2,971) have recovered, about 2% (58) have died, and about 2% (73) are receiving treatment.
- The new case is a 45-year-old Thai man under state quarantine in Bangkok. He worked at a camp in Kuwait prior to returning Thailand on 24th of May and tested positive on June 3<sup>rd</sup>. He is currently asymptomatic.
- No new deaths were reported today.
- In the past week, all COVID-19 cases detected in Thailand have been in returnees (there have been no reported cases due to local transmission).
- It is essential that members of the public continue to adhere to preventive measures including frequent hand washing, respiratory etiquette, maintaining social distancing and avoiding crowded places.
- Using the Thai Chana website and mobile app is highly recommended by national authorities

New and cumulative COVID-19 cases in Thailand,  
by date of reporting



Treatment outcomes of  
COVID-19 patients (n=3102)



Source: MoPH, 05 June 2020

## UPDATE ON TESTING METHODS FROM THE MOPH

The Department of Medical Sciences is adopting the saliva pooled sampling method to accelerate COVID-19 testing in 100,000 persons from targeted groups including health and medical professionals, prison inmates, drivers of public buses and migrant workers. The method is effective and can substantially reduce the cost of COVID-19 testing. Currently, COVID-19 positive cases represent only 0.1% of all tests and more than 40,000 pooled saliva tests have been completed to date.

# Third Phase of Easing Restrictions on Certain Businesses and Activities



In Effect from 1 June 2020

## Activities relating to the economy and way of life



**Department stores** and shopping centers are allowed to stay open until 21.00 hr

**Exhibition halls** or exhibition sites, with total area up to 20,000 square meters, may open until 21.00 hr



**Amulet shops** may open with physical-distancing measures

**Beauty salons** and barber shops are allowed to dye hair, with two-hour service for each customer and without having other customers waiting inside the shop



**Child care centers** can open for staff to distribute food to children and make arrangements in accordance with public health standards, with no teaching and learning

**Cinemas, theaters, and playhouses** may open with no more than 200 people, but concerts and music performances are still not allowed



**Zoos** may open with a limited number of customers

## Exercising and health care activities



**Beauty clinics and tattoo shops** can operate on any part of the body, except on the face, but both service providers and customers must wear masks

### Massage and spa houses

for health are allowed to open, with no sauna and steam services



**Fitness centers** can fully operate, with a limited time and number of customers and without the opening of sauna and steam rooms

### Stadiums for football, basketball and volleyball

will resume for exercise and practice, but the participants aren't more than 10 people (excluding players)



**Bowling alleys, skating parks, and rollerblade parks** may open for only exercise and practice

### Ballroom dance classes

are allowed to open as usual



**Swimming pools for water sports & ponds for sports and recreational activities** are allowed to open but with a limited number of customers & players and no competitions

PHASE 3 OF THE EASING OF RESTRICTIONS BECAME EFFECTIVE ON JUNE 1<sup>ST</sup>.

- The night curfew is now in place from 11pm - 3am. Shopping centres may open from 10am to 9pm.
- Fitness centres, sport facilities, public zoos, tourist spots, some businesses (including amulet shops, beauty clinics and cinemas) can be reopened with appropriate precautions for crowd management.
- Inter-provincial travel also allowed.

- Thailand extended a ban on international flights until the end of June.  
- Curfew time: 23.00 to 03.00 hr



## WHAT WHO IS DOING TO PROVIDE SUPPORT TO THAILAND

WHO Thailand is in frequent direct contact with the Royal Thai Government through the Ministry of Public Health, sharing information on key developments, guidelines and scientific updates. WHO supports the wider UN response, including working with key partners and the Ministry of Public Health to support migrant populations in Thailand. WHO also provides information and advice to staff of the UN system in Thailand



### USEFUL LINKS

- The Thailand COVID19 situation report is available in Thai and English, please [visit](#).
- For regular updates on WHO's response in Thailand, please [visit](#).
- For global figures and technical advice from WHO, please [visit](#).

World Health Organization Country Office for Thailand  
4th Fl., Permanent Secretary Bldg.3 Ministry of Public Health,  
Nonthaburi Thailand, 11000

Media queries [sethawebmaster@who.int](mailto:sethawebmaster@who.int) and [kanpirom@who.int](mailto:kanpirom@who.int)



World Health  
Organization  
Thailand

For latest updates and resources, please visit:



[www.who.int/thailand](http://www.who.int/thailand)



[@WHOThailand](https://twitter.com/WHOThailand)



[WHOThailand](https://www.facebook.com/WHOThailand)



[WHOThailand](https://www.youtube.com/WHOThailand)