

Coronavirus disease 2019 (COVID-19)

Data as reported by the Thai Ministry of Public Health



World Health
Organization
Thailand

29 June 2020

WHO Thailand Situation Report



3,169
Confirmed



58
Deaths



58
Hospitalized



3,053
Recovered

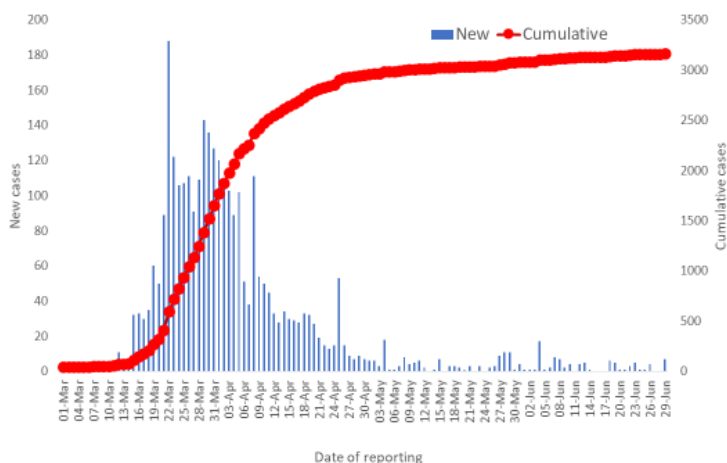


**THAILAND
SITUATION
UPDATE**

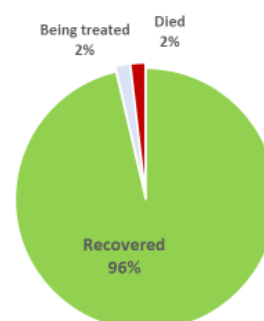
SPOTLIGHT

- On the 29th of June 2020, seven new cases of laboratory-confirmed COVID-19 were reported by the Ministry of Public Health. The total number of cases reported in Thailand is currently 3,169.
- Of these cases, about 96% (3,053) have recovered, 2% (58) have died and 2% (58) are still receiving treatment.
- All seven new cases are in Thai nationals currently in State Quarantine, who returned from abroad (six from India, one from USA). In total, 232 COVID-19 cases have been detected in persons in State Quarantine.
- No new deaths were reported today.
- In the past five weeks, all COVID-19 cases detected in Thailand have been in repatriated Thai nationals (there have been no reported cases due to local transmission). It is important that members of the public continue to follow all the recommended preventive measures including physical distancing, washing hands regularly and avoiding touching the face, wearing masks if having to visit crowded places and adhering to respiratory etiquette by coughing only into a folded elbow or a tissue (which should be disposed of safely).

New and cumulative COVID-19 cases in Thailand,
by date of reporting



Treatment outcomes of
COVID-19 patients (n=3169)



Source: MoPH, 29 June 2020

UPDATE FROM THE MINISTRY OF PUBLIC HEALTH

Healthcare facility assessment

- The Ministry of Public Health has undertaken a survey to assess capacity to admit and treat COVID-19 patients. A total of 11,206 non-ICU beds are available, which means that a maximum of 500 COVID-19 positive cases could be admitted per day. Over 1.12 million N95 face masks, 511,578 sets of PPE and 11,096 ventilators are available. Sufficient stocks of drugs are available to deal with any possible re-emergence of COVID-19.

Vaccine development in Thailand

- Thailand has so far developed 20 prototype vaccines, six of which have already been tested on primates. The first phase of a human trial is scheduled for October 2020. If successful, it is anticipated that maximum production capacity would result in up to 30 million doses for distribution within Thailand by the end of 2021.

Laboratory testing for COVID-19

- From 20-26 June, 35,363 samples were tested for COVID-19. Detection rate varied from 0.1-0.3%
- The cumulative number of tests performed as of 26 June is 603,657 samples.
- As of 29 June, 201 laboratories have been approved by the Department of Medical Sciences to perform PCR testing

Bangkok (78)		Province (123)	
Government (35)	Private (43)	Government 99)	Private (24)

UPDATE FROM THE CCSA

Extension of Emergency Decree and Phase 5 of reduced restrictions

The CCSA has extended the emergency decree for one month until the 31st July and has endorsed phase 5 of lockdown easing, including the following:

- All schools can open on July 1st
- Department stores can stay open until 10 PM and convenience stores can be open 24 hours per day
- Entertainment night spots, karaoke bars, pubs and restaurants with live bands, and massage parlours can open until midnight with appropriate arrangements for physical distancing

The CCSA also endorsed nine extra border checkpoints for logistics and transportation (in addition to 28 existing checkpoints).

In addition, the CCSA endorsed a Ministry of Transportation proposal to revoke physical distancing within public transportation. A maximum of 70% occupancy will be allowed.

Additional groups allowed entry into Thailand

The CCSA endorsed entry for an additional six groups of foreigners as follows:

1. Spouses and children of work permit holders
2. Foreigners with residency rights in Thailand
3. Foreigners married to Thais (and their children)
4. Foreigners and their carers seeking medical treatment in Thailand (except for COVID-19)
5. International students and their guardians
6. Short-stay business travellers and guests of the government from Japan, South Korea, Singapore, China and Hong Kong – as per special arrangements made with these countries. Until more alternative state quarantine rooms are made available, only 200 foreigners will be allowed entry per day. The special arrangement will allow entry to groups of no more than 10 people for a short period. Visitors will be tested for Covid-19 prior to travel and on arrival in Thailand, where they will be monitored constantly by health and security officials. They must submit their Thailand itinerary in advance and will only be allowed to travel by private car.

WHAT WHO IS DOING TO PROVIDE SUPPORT TO THAILAND

WHO Thailand is in frequent direct contact with the Royal Thai Government through the Ministry of Public Health, sharing information on key developments, guidelines and scientific updates. WHO supports the wider UN response, including working with key partners and the Ministry of Public Health to support migrant populations in Thailand. WHO also provides information and advice to staff of the UN system in Thailand.



- The Thailand COVID19 situation report is available in Thai and English, please [visit](#).
- For regular updates on WHO's response in Thailand, please [visit](#).
- For global figures and technical advice from WHO, please [visit](#).

World Health Organization Country Office for Thailand
4th Fl., Permanent Secretary Bldg.3 Ministry of Public Health,
Nonthaburi Thailand, 11000

Media queries sethawebmaster@who.int and kanpirom@who.int



For latest updates and resources, please visit: