

Coronavirus disease 2019 (COVID-19)

Data as reported by the CCSA mid-day press briefing



World Health
Organization
Thailand

30 December 2020

WHO Thailand Situation Report



6,690
Confirmed



61
Deaths



2,417
Hospitalized



4,212
Recovered

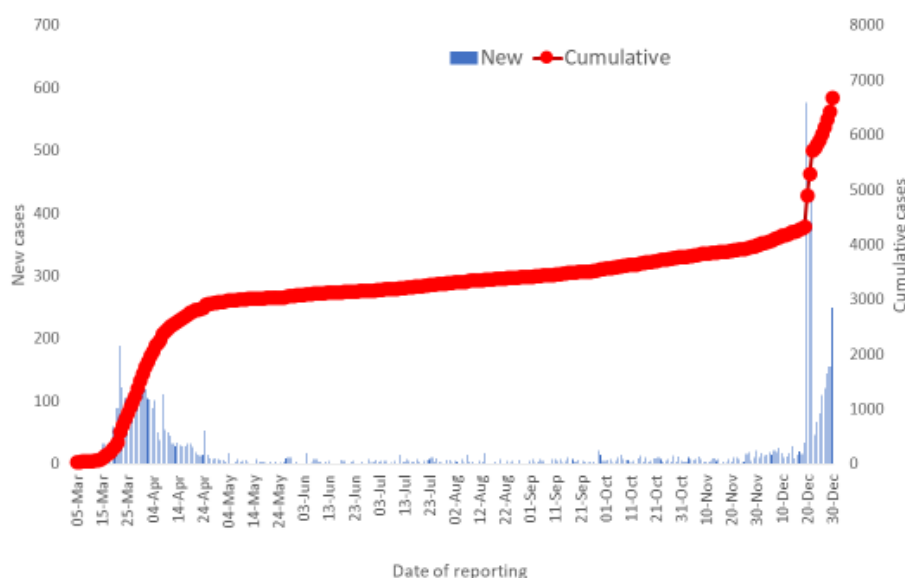


**THAILAND
SITUATION
UPDATE**

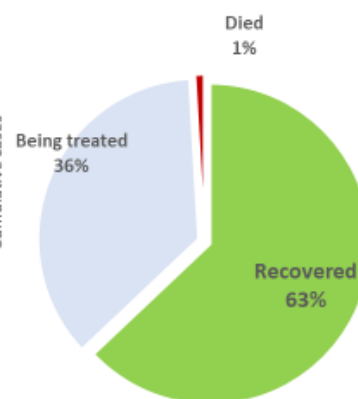
SPOTLIGHT

- On the 30th of December 2020, 250 new cases of laboratory-confirmed COVID-19 were reported by the Ministry of Public Health. The total number of cases reported in Thailand is currently 6,690
- Of these cases, 63 % (4,212) have recovered, 0.9% (61) have died and 36.1 % (2,417) are still receiving treatment.
- The 250 laboratory-confirmed cases reported today include 8 individuals diagnosed in quarantine facilities. One case was in a truck driver who illegally crossed the border and did not enter quarantine and was repatriated for treatment.
- The 250 new cases reported today also include 239 cases classified as 'domestic transmission', as follows
 - 9 cases are linked to the Samut Sakhon cluster including Samut Sakhon (4), Bangkok (2), Ayutthya (1), Ranong (1) and Nonthaburi (1)
 - 3 cases are linked to the Rayong cluster, including Ayutthya (1), Rayong (1) and Amnat Charoen (1)
 - 29 cases are linked to entertainment venues, occupational risk and visiting crowded places, including Bangkok (15) Nakhon Pathom (5), Samut Prakarn (1), Saraburi (3), Nakhon Nayok (1), Nonthaburi (1) and Phetchaburi (3)
 - 198 cases are under investigation, including Samut Sakhon (12), Nonthaburi (17), Rayong (53), Chonburi (108), Chantaburi (7) and Trat (1)
- The remaining 2 cases reported today are in migrant workers in Nonthaburi.
- Locally transmitted COVID-19 cases have now been reported in 48 Provinces. The three new Provinces reporting active cases on 29th December are Ranong, Amnat Charoen and Trat.
- It is very important that members of the public continue to follow all preventive measures including distancing, regular handwashing, avoiding touching the face, wearing masks when visiting crowded places and coughing only into a folded elbow or a tissue (which should be disposed of safely).

New and cumulative COVID-19 cases in Thailand,
by date of reporting



Treatment outcomes of
COVID-19 patients (n=6690)



Source: MoPH, 30 Dec 2020

ANNOUNCEMENTS FROM CCSA

- Provincial Governors are empowered to enact CCSA announcements and identify 4 levels of control areas from District to Sub-District and village levels
- Any activity organised in the highest-controlled area and in an area under surveillance needs permission from the Bangkok Governor or Provincial governor. Gatherings among family members at private residences can be organised.
- Any gathering or activity where large crowds are expected will be prohibited.
- Those violating this announcement will face charges following Section 18 of the Emergency Decree.
- Members of the public are encouraged to avoid unnecessary travel and celebrate New Year at home with their families
- Individuals who are vaccinated against COVID-19 and travel to Thailand will still need to undergo 14 days of quarantine until more is known about vaccine effectiveness

REMINDER: Symptoms of COVID-19

People with COVID-19 may have a wide range of symptoms ranging from mild to severe illness. Symptoms may appear 2-14 days after exposure to the virus. People with one or more of these symptoms may have COVID-19

- Fever or chills
- Cough
- Partial or complete loss of taste or smell
- Shortness of breath or difficulty breathing
- Fatigue
- Muscle or body aches
- Headache
- Sore throat
- Congestion or runny nose
- Nausea, vomiting or diarrhea



WHAT WHO IS DOING TO PROVIDE SUPPORT TO THAILAND

WHO Thailand supports the Royal Thai Government through the Ministry of Public Health, sharing information on key developments, guidelines and scientific updates. WHO also supports the wider UN response, including working with key partners to support migrant populations in Thailand. WHO also provides information and advice to staff of the UN system in Thailand.



- The Thailand COVID19 situation report is available in Thai and English, please [visit](#).
- For regular updates on WHO's response in Thailand, please [visit](#).
- For global figures and technical advice from WHO, please [visit](#).

World Health Organization Country Office for Thailand
4th Fl., Permanent Secretary Bldg.3 Ministry of Public Health,
Nonthaburi Thailand, 11000

Media queries sethawebmaster@who.int and kanpirom@who.int



For latest updates and resources, please visit: