


# Coronavirus disease 2019 (COVID-19)


Data as reported by the CCSA mid-day press briefing


19 March 2021

## WHO Thailand Situation Report

  
**27,594**  
**(+100)**  
Confirmed

  
**90**  
**(+1)**  
Deaths

  
**1,054**  
Hospitalized

  
**26,450**  
**(+73)**  
Recovered

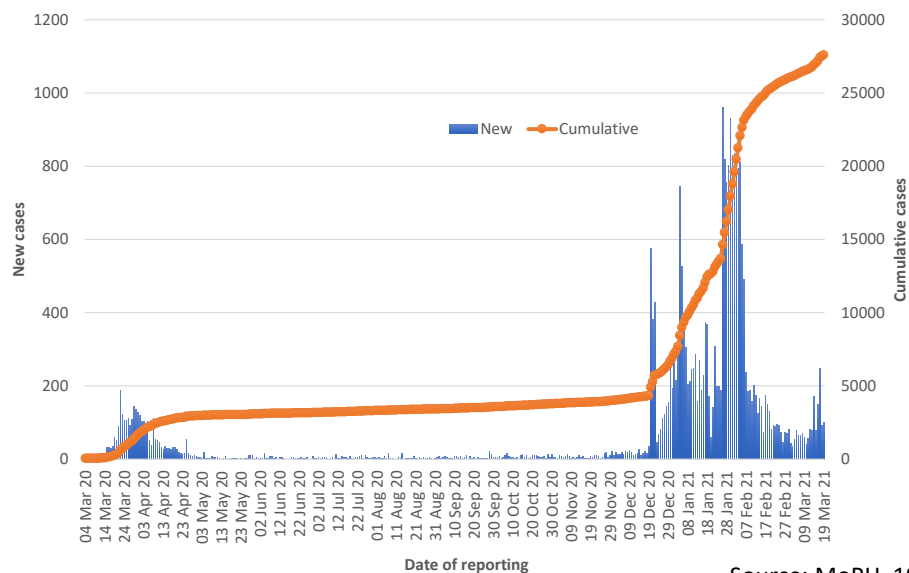


**THAILAND  
SITUATION  
UPDATE**  
**No. 162**

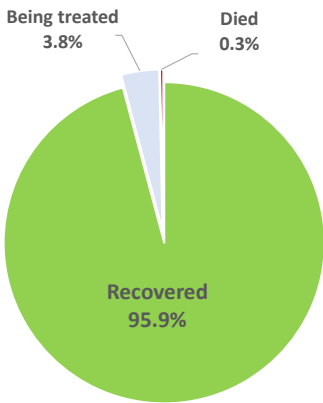
### SPOTLIGHT

- 100 new cases of laboratory-confirmed COVID-19 were announced by the Ministry of Public Health of Thailand bringing the total number of cases to date to 27,594. **One new death was reported today.**
- Of the cases reported in Thailand, 95.9% (26,450) have recovered, 0.3% (90) have died, and 3.8% (1,054) are receiving treatment or are in isolation (846 are in conventional hospitals and 208 in field hospitals).
- The 100 laboratory-confirmed cases reported today include
  - 4 individuals who arrived recently in Thailand and were diagnosed in quarantine facilities.
  - 55 cases detected through the routine surveillance system linked to occupational risk, visiting crowded places or contact with confirmed cases in Samut Sakhon (13 Thais, 16 Myanmar nationals), Samut Prakan (4 Thais), Bangkok (8 Thais), Pathum Thani (1 Thai, 1 Lao national), Suphan Buri (1 Thai), Phetchaburi (8 Thais), Mukdahan (1 Thai) and Narathiwat (2 Myanmar nationals).
  - 41 cases identified through active case finding in Phetchaburi (2 Thais), Bangkok (10 Thais, 4 Myanmar nationals), Nakhon Pathom (1 Thai), Nonthaburi (1 Myanmar national), Pathum Thani (3 Thais), Ayutthaya (2 Thais) and Samut Sakhon (4 Thais, 14 Myanmar nationals). This brings the cumulative total in this group to 15,365 cases.
- Of 96 cases acquired in Thailand, 47 were detected in Samut Sakhon, 22 in Bangkok and 27 in other provinces.
- During the new wave (between 15 December 2020 and 19 March 2021), 23,357 confirmed cases have been reported, of which 6,805 were detected through the routine surveillance system, 15,365 through active case finding, and 1,187 are individuals who entered Thailand from other countries. At present, 22,273 have recovered, 1,054 are receiving treatment, and 30 have died.
- During the new wave, new cases have been reported in 65 provinces in Thailand. **During the past week (14-19 March 2021), new cases were reported in 15 provinces.**

New and cumulative COVID-19 cases in Thailand,  
by date of reporting



Treatment outcomes of  
COVID-19 patients (n=27594)

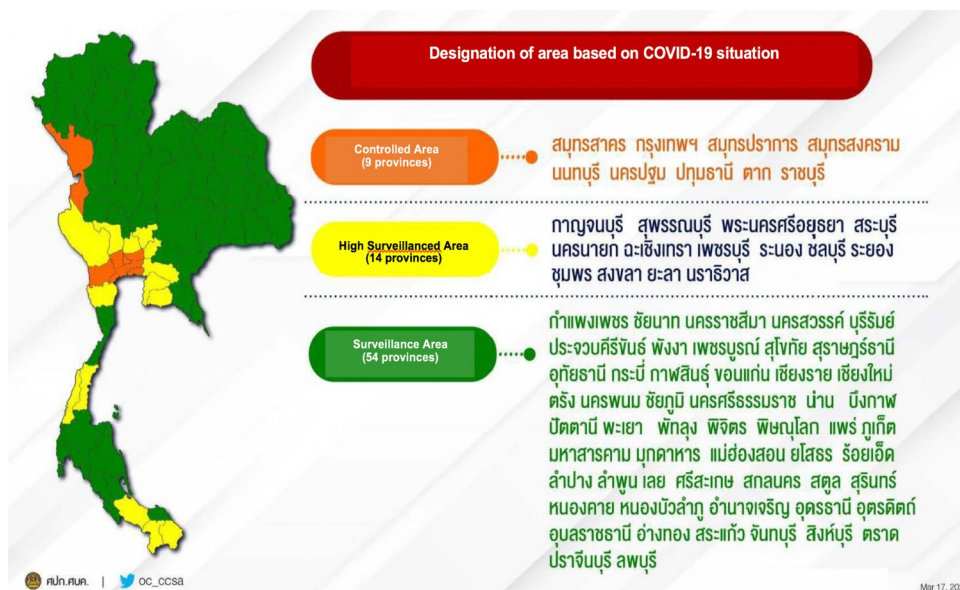


Source: MoPH, 19 Mar 2021

# UPDATE FROM THE CCSA

## • Extension of Emergency Decree and Relaxation of measures for COVID-19 control

- ◇ The CCSA approved the 11th extension of the Emergency Decree, effective 1st April – 31st May 2021.
- ◇ A relaxation of public measures was approved by the CCSA, effective 17 March 2021. The colour coding system that applies to different Provinces remains in place; more detail will be available soon, Samut Sakhon is now designated as a controlled area (orange zone). Food shops and entertainment venues in most orange zones can now open until 11.00p.m. although in Samut Sakhon, entertainment venues must remain closed. No restrictions are in place in the green zone.



## • The Thailand COVID-19 vaccination programme

Between 28 February -18 March 2021, 62,941 people in Thailand were vaccinated, the majority of whom were healthcare workers. (31,066) and individuals in defined in risk areas (20,511). More doses of the Sinovac vaccine are expected to arrive in Thailand tomorrow and will be distributed to 18 provinces for frontline healthcare workers and those with underlying conditions.



In this episode of 'Science in 5' the WHO Chief Scientist, Dr. Soumya Swaminathan, talks about vaccine dosage and the science and evidence behind it.

## WHAT WHO IS DOING TO SUPPORT THAILAND

WHO Thailand supports the Royal Thai Government through the Ministry of Public Health, sharing information on developments, guidelines and scientific updates. WHO also supports the wider UN response, including working with key partners to support migrant populations in Thailand. WHO also provides information and advice to staff of the UN system in Thailand.



**USEFUL**

The Thailand COVID19 situation report is available in Thai and English, please [visit](#)  
For regular updates on WHO's response in Thailand, please [visit](#)

**World Health Organization Country Office for Thailand**  
4th Fl., Permanent Secretary Bldg.3 Ministry of Public Health,  
Nonthaburi Thailand, 11000

Media queries [sethaweabmaster@who.int](mailto:sethaweabmaster@who.int) and [kanpirom@who.int](mailto:kanpirom@who.int)

**For latest updates and resources, please visit:**

[www.who.int/thailand](http://www.who.int/thailand) [@WHO Thailand](https://twitter.com/WHO_Thailand) [f WHO Thailand](https://facebook.com/WHO_Thailand) [v WHO Thailand](https://youtube.com/WHO_Thailand)

**World Health Organization**  
Thailand