


# Coronavirus disease 2019 (COVID-19)


Data as reported by the CCSA mid-day press briefing


26 March 2021

## WHO Thailand Situation Report

  
**28,577**  
**(+134)**  
Confirmed

  
**92**  
**(+0)**  
Deaths

  
**1,453**  
Hospitalized

  
**27,032**  
**(+86)**  
Recovered

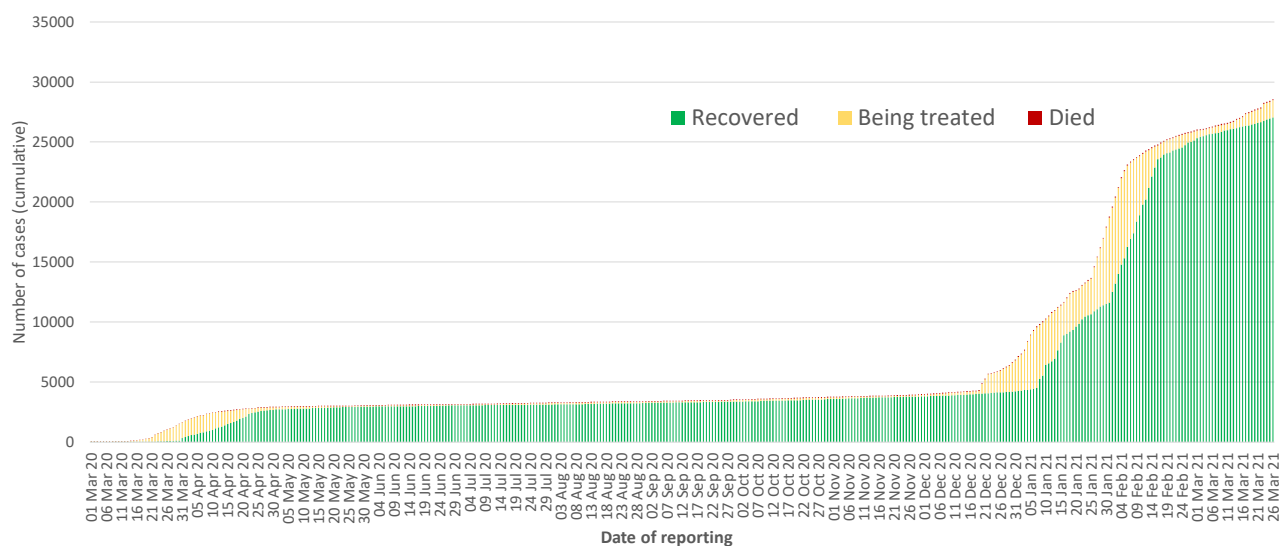


**THAILAND  
SITUATION  
UPDATE**  
**No. 164**

### SPOTLIGHT

- On 26 March 134 new cases of laboratory-confirmed COVID-19 were announced by the Ministry of Public Health of Thailand, bringing the total number of cases to date to 28,577. **No new death was reported today.**
- Of the cases reported in Thailand, 94.6% (27,032) have recovered, 0.3% (92) have died, and 5.1% (1,453) are receiving treatment or are in isolation (1,040 are in conventional hospitals and 413 in field hospitals).
- The 134 laboratory-confirmed cases reported today include
  - 6 individuals who arrived recently in Thailand and were diagnosed in quarantine facilities.
  - 41 cases detected through the routine surveillance system linked to occupational risk, visiting crowded places or contact with confirmed cases, in Bangkok (16 Thais), Tak (5 Myanmar nationals), Samut Prakan (5 Thais), and Samut Sakhon (3 Thais, 12 Myanmar nationals).
  - 87 cases identified through active case finding, in Bangkok (22 Thais, 59 Myanmar nationals, 1 Lao), Pathum Thani (1 Myanmar national) and Samut Songkhram (2 Thais, 1 Myanmar national), and Samut Sakhon (2 Myanmar nationals). This brings the cumulative total in this group to 15,982 cases.
- Of the cases acquired in Thailand, 17 were detected in Samut Sakhon, 98 in Bangkok and 13 in other provinces.
- During the new wave (between 15 December 2020 and 26 March 2021), 24,340 confirmed cases have been reported, of which 7,111 were detected through the routine surveillance system, 15,982 through active case finding, and 1,247 are individuals who entered Thailand from other countries. At present, 22,855 have recovered, 1,453 are receiving treatment, and 32 have died.
- During the new wave, new cases have been reported in 66 provinces in Thailand.
- The 14 provinces reporting more than 50 cumulative cases in the new wave are Samut Sakhon (17,052), Bangkok (2,055), Pathum Thani (760), Chonburi (658), Rayong (584), Samut Prakan (404), Chanthaburi (221), Tak (213), Nonthaburi (194), Nakhon Pathom (170), Ang Thong (125), Phetchaburi (88), Samut Songkhram (73), and Ayutthaya (64).

### COVID-19 cases in Thailand, by date of reporting



Source: MoPH, 26 Mar 2021

# UPDATE FROM THE CCSA

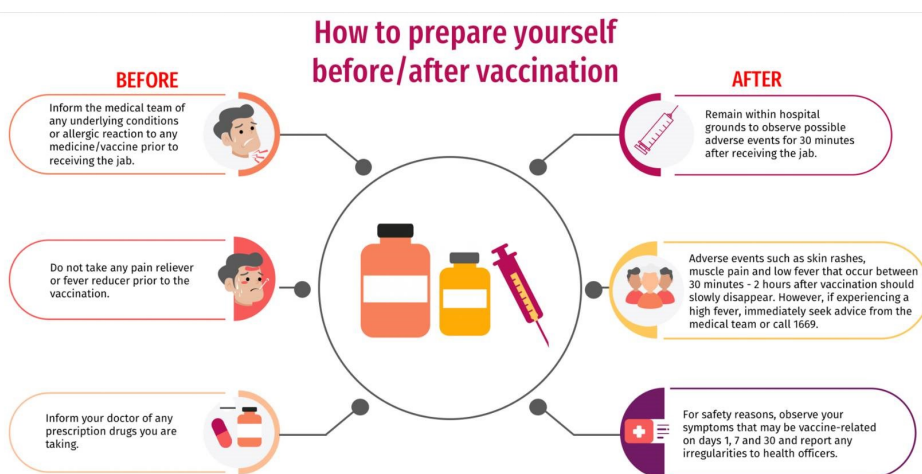
## Vaccines

- ◇ The Thai FDA approved the Johnson & Johnson vaccine for local emergency use on Thursday, 25 March. This is the third COVID-19 vaccine to be approved for use in the national programme.
- ◇ There have only been two cases of adverse events and both people involved have been treated and discharged from hospital.
- ◇ Public health authorities have investigated a case involving a vaccinee who died after being vaccinated. An initial report suggests that this man had been suffering from an underlying condition prior to vaccination, including an aortic aneurysm. The Department of Disease Control has examined the case thoroughly and the Ministry of Public Health has held a press briefing to clarify that this individual had succumbed to his pre-existing conditions and not as a result of having received the COVID-19 vaccine.
- ◇ From the first batch of Sinovac vaccines (200,000 doses) that arrived in Thailand, 19,720 doses have already been distributed to 13 provinces and 54,980 doses of AstraZeneca have been distributed to 5 provinces (Samut Sakhon, Nonthaburi, Pathum Thani, Samut Prakarn, and Bangkok).
- ◇ Between 28 February – 25 March, 136,190 doses of vaccines have already been administered. 121,392 people have received the first dose, 14,798 people have received the second dose.

## EXPLAINER: Thai-Malaysia cross border cooperation

The COVID-19 pandemic shows that viruses do not respect national borders. Therefore, information on the epidemic in a neighbouring country is valuable for planning and control measures. Malaysia shares a 595-kilometer land border with Thailand. Many Thai citizens in the southern provinces share cultural, religious, and economic interests with Malaysian citizens across the border. As of 24 March, Malaysia reported 336,808 COVID cases and 1,246 confirmed deaths. Around 1,000 new cases are currently being reported each day, and nearly all are the result of large-scale community transmission. This reflects a downward trend from early February when around 3,000 cases per day were being reported. However, a recent rise in the basic reproduction number, also known as  $R_0$ , to 0.99 is generating concern that a new wave of infection may be on the horizon. The reproduction number is the expected number of cases generated by one case in a population where all individuals are susceptible to infection. An  $R_0$  above one indicates that an epidemic is growing. Malaysian authorities are urging citizens to continue to comply with public health and social distancing measures to prevent another wave of infection. On February 24<sup>th</sup>, Malaysia launched a national COVID vaccination campaign. The vaccine is free to the people of the country, both Malaysians and foreigners. As of 24 March, a total of 74,289 individuals in the country had completed a full vaccination regimen. WHO Thailand's staff are in contact with colleagues in Malaysia, helping to provide Thailand with vital intelligence on the situation there.

Read more [here](#)



Source of information (Thai): Facebook@informationcovid19  
Unofficial translation (English): WHO Country Office for Thailand

**COVID-19 is still a threat in 2021!**

We still need to:

**Take the COVID-19 vaccine based on national guidance**

World Health Organization  
REGIONAL OFFICE FOR THE Eastern Mediterranean

#COVID19  
#Coronavirus

## WHAT WHO IS DOING TO SUPPORT THAILAND

WHO Thailand supports the Royal Thai Government through the Ministry of Public Health, sharing information on developments, guidelines and scientific updates. WHO also supports the wider UN response, including working with key partners to support migrant populations in Thailand. WHO also provides information and advice to staff of the UN system in Thailand.



### USEFUL

The Thailand COVID19 situation report is available in Thai and English, please [visit](#)  
For regular updates on WHO's response in Thailand, please [visit](#)

World Health Organization Country Office for Thailand  
4th Fl., Permanent Secretary Bldg.3 Ministry of Public Health,  
Nonthaburi Thailand, 11000

Media queries [sethaweabmaster@who.int](mailto:sethaweabmaster@who.int) and [kanpirom@who.int](mailto:kanpirom@who.int)

For latest updates and resources, please visit:

[www.who.int/thailand](http://www.who.int/thailand) [@WHO Thailand](#) [WHO Thailand](#) [WHO Thailand](#)

World Health Organization  
Thailand