

# Coronavirus disease 2019 (COVID-19)


Data as reported by the CCSA mid-day press briefing


13 May 2021

## WHO Thailand Situation Report

  
**93,794**  
**(+4,887)**  
Confirmed

  
**518**  
**(+32)**  
Deaths

  
**32,661**  
Hospitalized

  
**60,615**  
**(+1,572)**  
Recovered

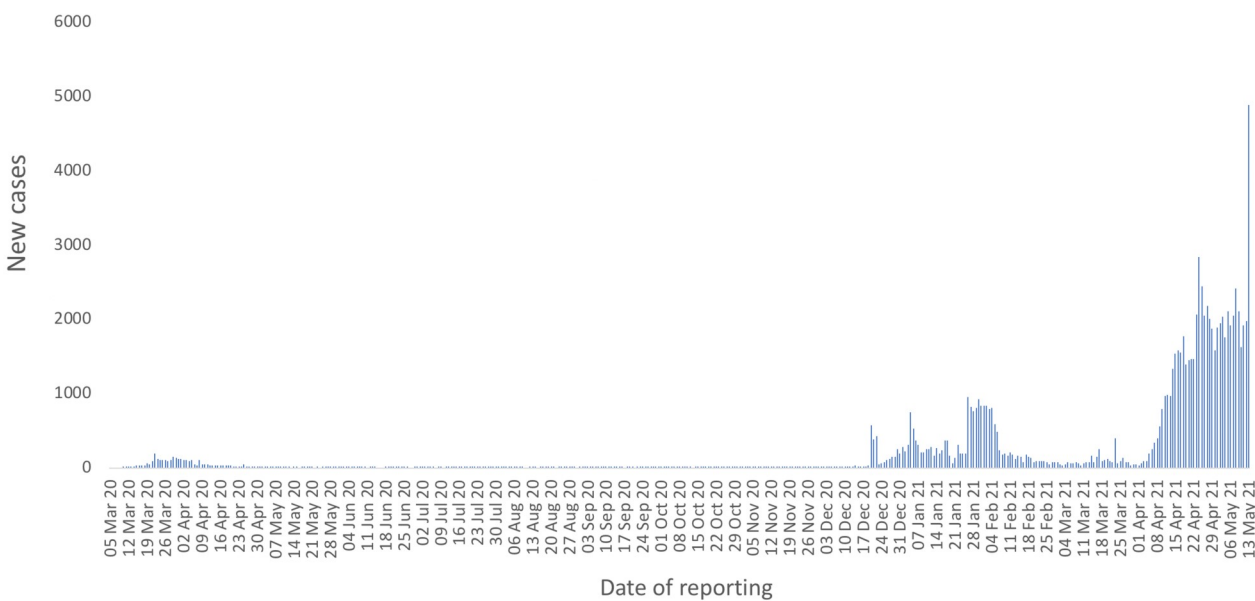


**THAILAND  
SITUATION  
UPDATE**  
**No. 180**

## SPOTLIGHT

- Today, 4,887 new cases of laboratory-confirmed COVID-19 were announced by the Ministry of Public Health of Thailand. Thirty two new deaths were reported today. In addition, 1,209 patients are considered to have serious illness, of which 406 are currently receiving ventilatory support.
- Of the cases reported in Thailand to date, 64.6% (60,615) have recovered, 0.5% (518) have died, and 34.9% (32,661) are receiving treatment or are in isolation: (20,451 are in conventional hospitals and 12,210 in field hospitals).
- The 4,887 laboratory-confirmed cases reported today include
  - ◇ 2,835 cases at Bangkok Remand Prison and Central Women's Correctional Facility.
  - ◇ 1,439 cases detected through the routine surveillance system: (testing of people presenting at a healthcare facility for a variety of reasons, including presence of COVID-19 symptoms, contact with a case, concern about a possible exposure).
  - ◇ 597 cases identified through active case finding: (testing of people in the community at the initiative of public health authorities).
  - ◇ 16 cases detected in quarantine after arriving in Thailand from another country.
- Between 1 April 2021 and 13 May 2021, 64,931 confirmed cases have been reported, of which 51,597 were detected through the routine surveillance system, 10,164 through active case finding, 335 are individuals who entered Thailand from other countries, and 2,835 are inmates and officials at prison facilities. 424 cases have died.
- The 10 Provinces reporting the greatest number of laboratory-confirmed COVID-19 cases today are Bangkok (1,069), Samut Prakan (194), Pathum Thani (105), Nonthaburi (78), Surat Thani (73), Samut Sakhon (57), Prachuab Khirikhan (41), Ayutthaya (39), Rayong (30), and Songkhla (27).

## New COVID-19 cases in Thailand, by date of reporting



Source: [MoPH](#), 13 May 2021

# UPDATE FROM THE CCSA

## • The current situation

- ◇ Half of the new cases reported today were among inmates at the Bangkok Remand Prison and the Central Women's Correctional Facility. These inmates have been taken to healthcare facilities for treatment and isolation. All prison personnel have been vaccinated as a preventive measure.
- ◇ 14 provinces reported no new cases today. Newly-confirmed cases continue to be concentrated in Bangkok and its vicinity, including Samut Prakan and Pathum Thani provinces.

## • Vaccination

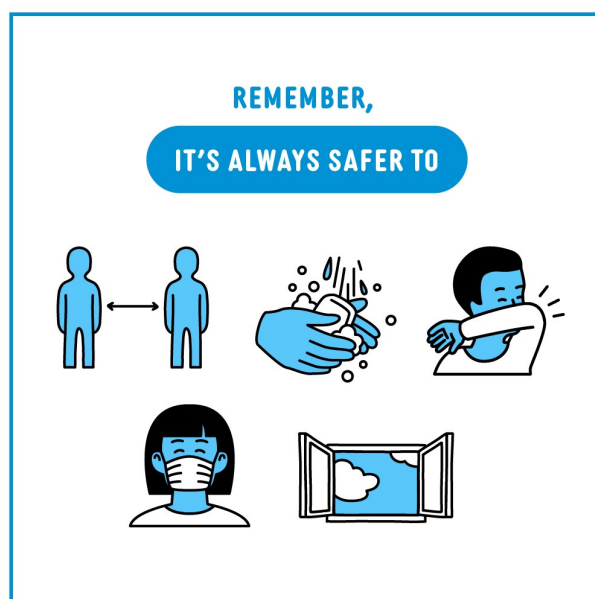
- ◇ The private sector, the Bangkok Metropolitan Administration and the Thai Chamber of Commerce and Board of Trade of Thailand are actively supporting Thailand's vaccination programme by setting up 14 vaccination units outside hospital settings including at department stores, private companies and petrol stations. Each vaccine unit will team up with healthcare workers from designated hospitals. Up to 38,000 – 50,000 vaccine doses will be administered each day in Bangkok through these points of service. 11 more vaccination units will be set up in the future totaling 25 units that will be able to vaccinate up to 50,000 people per day. It is expected that these vaccination units will be providing these services for at least seven months.
- ◇ As of 12 May, over 2 million doses of vaccine have been administered. More than 2 percent of the population have received a first dose, and nearly 1 percent have received both doses. At least 15 provinces have administered vaccines to at least 2 percent of the population, including Bangkok, Samut Sakhon, Phuket, Ranong, Tak, Chonburi and Rayong.
- ◇ Phuket has inoculated 22% of its population.

## • Adverse events

It is understandable for people to be concerned about adverse events following vaccination, but these are very rare occurrences. The benefits of getting a vaccine far outweigh the risks. Since the beginning of Thailand's COVID-19 vaccination campaign, 89% of those inoculated reported no adverse events. Those who did mostly experienced minor symptoms such as muscle pain, headache, fatigue and nausea, and only 13 people out of 2 million suffered severe adverse events.



WHO's Dr. Maria Van Kerkhove talks about the COVID-19 B.1.617 variant (minutes 13:45-18:10) and stresses that basic public health and social measures are effective against all new variants.



## WHAT WHO IS DOING TO SUPPORT THAILAND

WHO Thailand supports the Royal Thai Government through the Ministry of Public Health, sharing information on developments, guidelines and scientific updates. WHO also supports the wider UN response, including working with key partners to support migrant populations in Thailand. WHO also provides information and advice to staff of the UN system in Thailand.



### USEFUL

The Thailand COVID19 situation report is available in Thai and English, please [visit](#)  
For regular updates on WHO's response in Thailand, please [visit](#)

World Health Organization Country Office for Thailand  
4th Fl., Permanent Secretary Bldg.3 Ministry of Public Health,  
Nonthaburi Thailand, 11000

Media queries [sethawebmaster@who.int](mailto:sethawebmaster@who.int)



For latest updates and resources, please visit:

[www.who.int/thailand](http://www.who.int/thailand) [@WHO Thailand](#) [WHO Thailand](#) [WHO Thailand](#)