


Coronavirus disease 2019 (COVID-19)


Data as reported by the CCSA mid-day press briefing


27 May 2021

WHO Thailand Situation Report


141,217
(+3,323)
Confirmed


920
(+47)
Deaths


46,469
Hospitalized


93,828
(+2,063)
Recovered

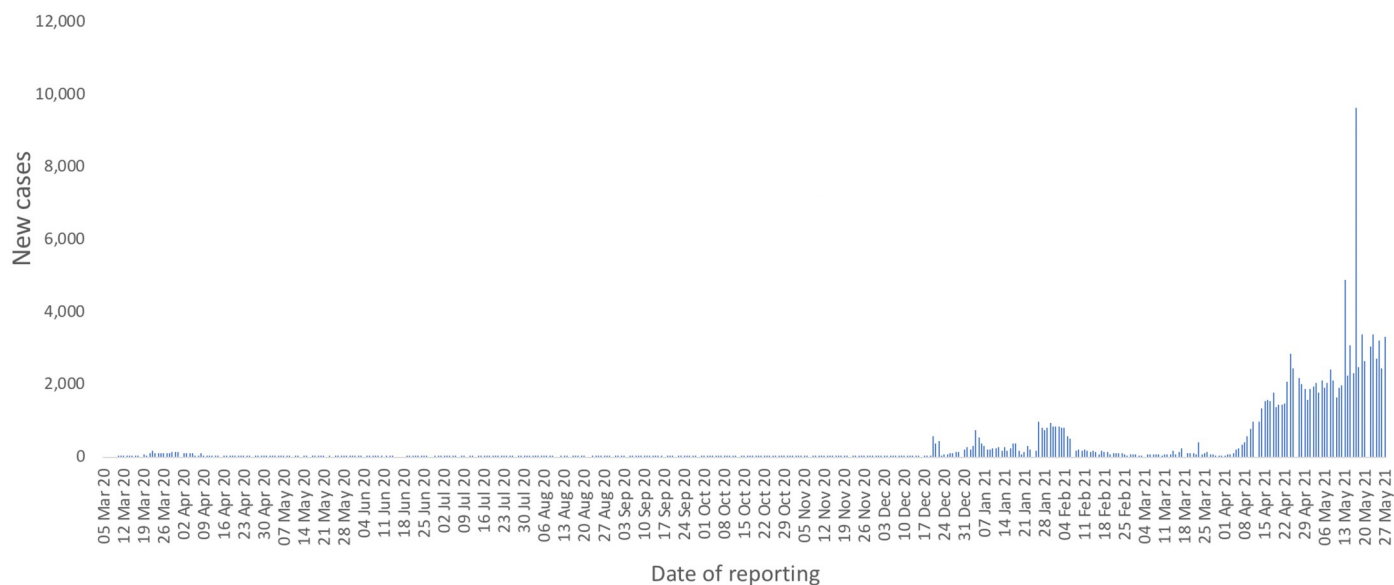


**THAILAND
SITUATION
UPDATE**
No. 184

SPOTLIGHT

- Today, 3,323 new cases of laboratory-confirmed COVID-19 were announced by the Ministry of Public Health of Thailand. 47 new deaths were reported today. In addition, 1,201 patients are considered to have serious illness, 399 of which are currently receiving ventilatory support.
- Of the cases reported in Thailand to date, 66.4% (93,828) have recovered, 0.7% (920) have died, and 32.9% (46,469) are receiving treatment or are in isolation: (18,335 are in conventional hospitals and 28,134 in field hospitals).
- The 3,323 laboratory-confirmed cases reported today include:
 - ◇ 1,219 cases in prison facilities.
 - ◇ 1,132 cases detected through the routine surveillance system: (testing of people presenting at a healthcare facility for a variety of reasons, including presence of COVID-19 symptoms, contact with a case, concern about possible exposure).
 - ◇ 951 cases identified through active case finding: (testing of people in the community at the initiative of public health authorities).
 - ◇ 21 cases detected in quarantine after arriving in Thailand from another country.
- The 10 Provinces reporting the greatest number of laboratory-confirmed COVID-19 cases today are Bangkok (894), Samut Prakan (280), Phetchaburi (233), Nonthaburi (129), Pathum Thani (98), Samut Sakhon (59), Chonburi (52), Chiang Rai (45), Nakhon Pathom (35), and Songkhla (31).
- 22 provinces reported no new cases today.

New COVID-19 cases in Thailand, by date of reporting



Source: MoPH, 27 May 2021

UPDATE FROM THE CCSA

• The current situation in Bangkok

- ◇ There are currently 41 clusters of COVID-19 in Bangkok, Bangkok, Bangkapi, Khlong Toei, Thonburi, and Sampantawong are being very closely monitored, with active case finding continuing to take place. Factories, construction workers' camps, crowded communities and markets in the capital and its vicinity continue to be areas of concern.
- ◇ The Bangkok Metropolitan Administration (BMA) issued an announcement on COVID-19 surveillance, prevention and control measures. Several districts in risk areas such as markets and camp sites have been instructed to comply with basic prevention measures. District offices have been asked to inspect construction camp sites to ensure that business operators and employers at the construction grounds are complying with these measures.

• Border areas

- ◇ The Thai-Cambodia border has reopened and immigration officials are ready to accommodate Thais who wish to return home.
- ◇ In the past 24 hours, 135 cases of illegal entry into Thailand by foreign and Thai nationals were reported.
- ◇ Thailand continues to report imported cases of infections from neighbouring countries.

• Vaccination

- ◇ Over 3.2 million vaccine doses have been administered in total since the beginning of the vaccination programme. 2.2 million have received the first dose and 994,000 have received both doses.

SITUATION ANALYSIS

Detection of COVID-19 'variant of concern' (VOC) B.1.351 in Narathiwat Province

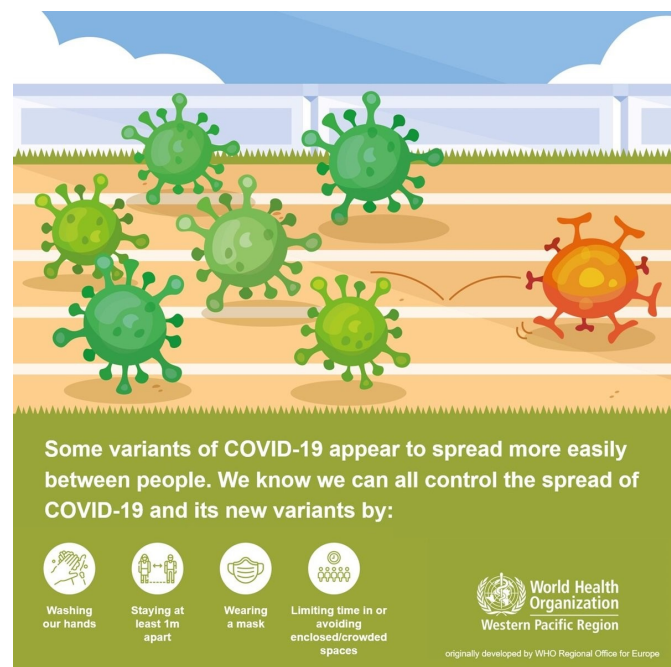
On 23rd May, the Ministry of Public Health announced the confirmation of three cases of the SARS-CoV-2 'Variant of Concern' B.1.351 in a previously detected cluster of COVID-19 cases in Tak Bai District, Narathiwat. Tak Bai District is immediately next to Tumpat District in Kelantan State in Malaysia, where a cluster of B.1.351 has previously been reported.

The 'index case' in the Narathiwat cluster is Thai businessman who became unwell on 26th April with fever and cough and self-treated with medicine from a local pharmacy. On the 30th April, he was admitted to a local hospital in Tak Bai for 1 night. He was re-admitted to a hospital in Yala Province on 4th May, where he tested positive for COVID-19. He has since recovered.

Initially his travel history was unclear, but a contact reported that he may have recently visited Malaysia. It was also reported that his family had entered Thailand from Malaysia without passing a disease control checkpoint or undergoing quarantine, and had stayed in Thailand between 12th April and 4th May, after which they returned to Malaysia.

By 23rd May, 698 high-risk close contacts had been identified, of which 81 cases (11.6 %) tested positive. In addition, community-based active case finding in 160 people found an additional two cases (1.52%). Of the 81 cases in contacts, ten were sampled and three were confirmed as B.1.351. Additional cases in this cluster have been identified since the initial report, including two reported today, making a total of 99 cases. The sub-district of Tam Bon Koh Saton was placed under lockdown and checkpoints set up. So far, no cases of B.1.351 have been reported anywhere else in Thailand

The VOC B.1.351 was initially reported in South Africa. Although it appears to spread between people more easily, transmission is interrupted by applying the same basic precautions currently in widespread use in Thailand, including hand washing, mask wearing, maintaining a distance from others and avoiding crowded and poorly ventilated places



WHAT WHO IS DOING TO SUPPORT THAILAND

WHO Thailand supports the Royal Thai Government through the Ministry of Public Health, sharing information on developments, guidelines and scientific updates. WHO also supports the wider UN response, including working with key partners to support migrant populations in Thailand. WHO also provides information and advice to staff of the UN system in Thailand.



USEFUL

The Thailand COVID19 situation report is available in Thai and English, please [visit](#)
For regular updates on WHO's response in Thailand, please [visit](#)

World Health Organization Country Office for Thailand
4th Fl., Permanent Secretary Bldg.3 Ministry of Public Health,
Nonthaburi Thailand, 11000

Media queries sethawebmaster@who.int



For latest updates and resources, please visit:

www.who.int/thailand [@WHO Thailand](https://twitter.com/WHO_Thailand) [f WHO Thailand](https://www.facebook.com/WHO_Thailand) [v WHO Thailand](https://www.youtube.com/WHO_Thailand)